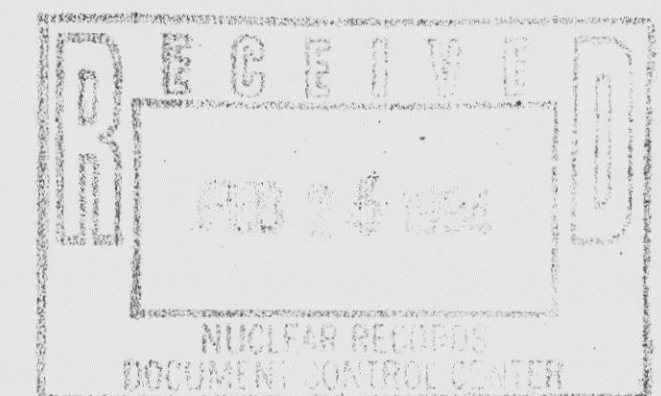
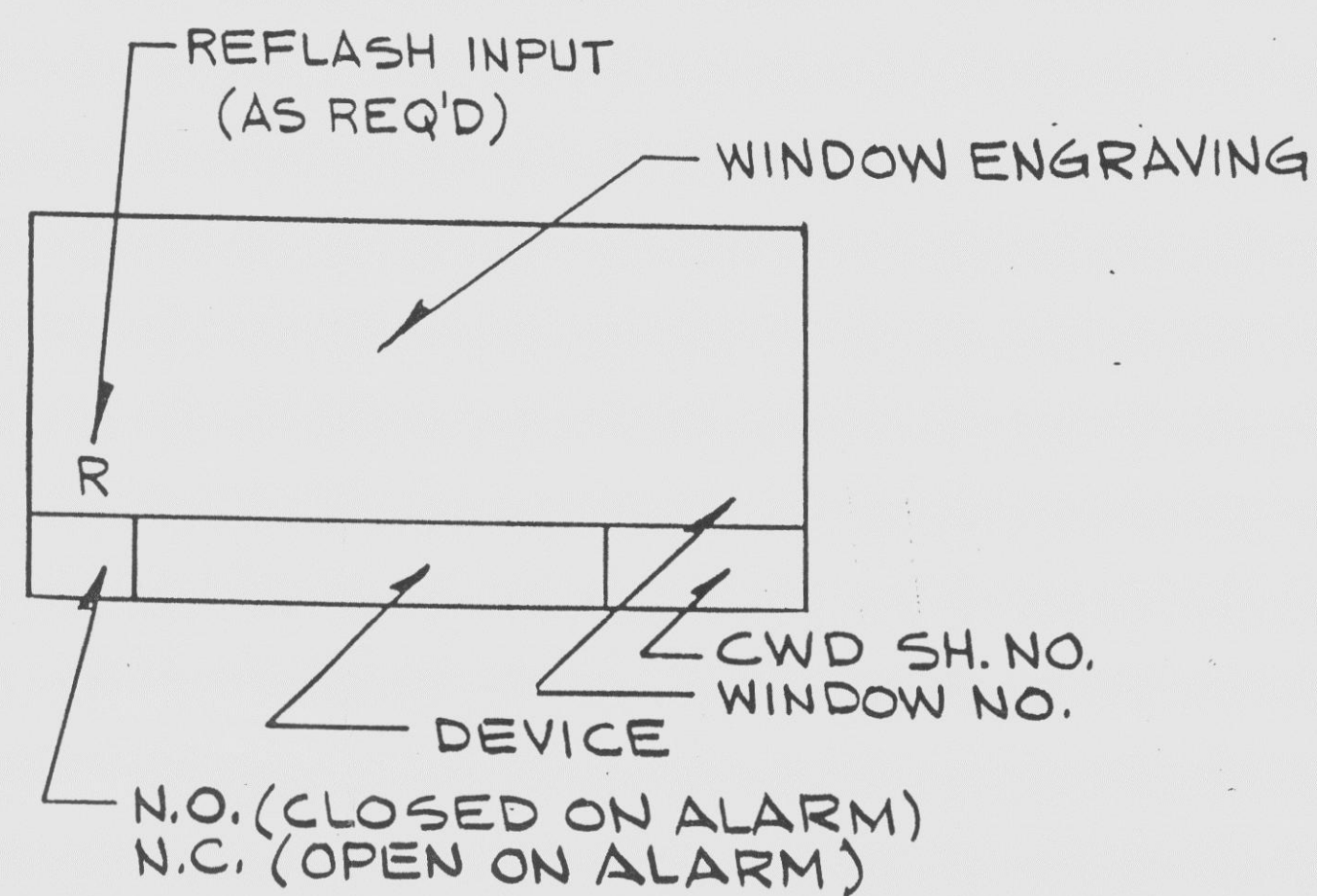


"A" SDC WARMUP VA.I-MV-03-1A MTR.OL/ VA. NOT CLOSED 1			"A" CS ISOL. VA.I-MV-07-3A MTR.OL/ VA. NOT FULLY OPEN 2			"A" LPSI PUMP SUCT. ISOL. VA. V3444 MTR.OL/ VA NOT FULLY OPEN 3			"A" LPSI PUMP DISCH. ISOL. VA. 3206 MTR OL/ VA NOT FULLY OPEN 4			"A" SDC-HX INLET ISOL. VA. V3452 MTR OL/ VA NOT CLOSED 5			"A" SDC-HX OUTLET ISOL. VA. V3456 MTR. OL/ VA NOT CLOSED 6		
N.O.	74,33	1088	N.C.	74,33	1091	N.C.	74,33	1084	N.C.	74,33	1085	N.O.	74,33	1080	N.O.	74,33	1081
"B" SDC WARMUP VA.I-MV-03-1B MTR.OL/ VA NOT CLOSED 7			"B" CS ISOL. VA.I-MV-07-3B MTR.OL/ VA NOT FULLY OPEN 8			"B" LPSI PUMP SUCT. ISOL. VA. V3432 MTR OL/ VA NOT FULLY OPEN 9			"B" LPSI PUMP DISCH. ISOL. VA. 3207 MTR OL/ VA NOT FULLY OPEN 10			"B" SDC-HX INLET ISOL. VA. V3453 MTR OL/ VA NOT CLOSED 11			"B" SDC-HX OUTLET ISOL. VA. V3457 MTR.OL/ VA NOT CLOSED 12		
N.O.	74,33	1089	N.C.	74,33	1092	N.C.	74,33	1086	N.C.	74,33	1087	N.O.	74,33	1082	N.O.	74,33	1083
FCV-3306 BYPASS VA.I-MV-03-2 MTR.OL/ VA. NOT FULLY OPEN 13			ECCS SUMP PUMP DISCH. ISOL VA'S. PWR. FAILURE 14			REACTOR COOLANT VENT PRESS. HIGH 15									<div>RESET</div> <div>TEST</div> <div>ACK</div>		
N.C.	74,33	1090	N.O.	94-3,94-4,2/TDO	503 543	N.C.	PIA-1117	1256									
			ECCS PUMP ROOM LEAKAGE VA'S. MISALIGNED 19														
			N.O.	62/TDC,2/TDC	1093												



RI-PCM 247-192

RO PCM 142-80

8				4				EBASCO SERVICES INCORPORATED NEW YORK				FLORIDA POWER & LIGHT CO. HUTCHINSON ISLAND PLANT-UNIT NO.1				8770-B-327 SHEET 1094	
7				3				DIV. <u>IEC</u> DR. <u>EM</u>				APPROVED					
6				2				SCALF <u>~</u> CH. <u>2013</u>				[Signature]					
5				1				2-8-94 <u>DI</u> <u>2013</u> - <u>IEF</u>				DATE <u>MAR 12 1982</u>					
REV	DATE	BY	APPROVED	REV	DATE	BY	APPROVED										

970 127007860 ANSTEC
APERTURE
CARD

E