

INTENTIONAL BLANK PAGE

Catawba Nuclear Station
Emergency Plan
Section B - Site Emergency Organization

B. Site Emergency Organization

B.1 Plant Staff Under Emergency Conditions

Figure B-2 shows the emergency organization of plant staff personnel for all shifts. The relationship of these personnel to their normal responsibilities and duties is unchanged during an emergency condition.

B.2 Emergency Coordinator

Initial activities at Catawba during any emergency condition are directed by the Shift Manager from the Control Room. The Shift Manager shall assume the functions of the Emergency Coordinator until the arrival of the Station Manager/designee at which time the Station Manager/designee will assume the functions of the Emergency Coordinator. The Emergency Coordinator will have the authority and the responsibility to immediately and unilaterally initiate any emergency actions including:

- a. Provide protective action recommendations to authorities responsible for implementing off-site emergency measures, implement event classification, notification, and event escalation/de-escalation/termination. THIS AUTHORITY SHALL NOT BE DELEGATED TO OTHER ELEMENTS OF THE EMERGENCY ORGANIZATION.
- b. Notification and activation of the Station, Corporate, County/City, South Carolina, North Carolina and the Nuclear Regulatory Commission emergency organizations having a response role.
- c. Continued assessment of actual or potential consequences both on- site and off-site throughout the evolution of the emergency condition.
- d. Effective implementation of emergency measures in the environs including protective actions for affected areas, implementation of emergency monitoring teams and facilities to evaluate the environmental consequences of the emergency condition, prompt notification and communications with off-site authorities.
- e. Continued maintenance of an adequate state of emergency preparedness until the emergency situation has been effectively managed and the station is returned to a normal or safe operating condition.

B.3 Emergency Coordinator (Line of Succession)

The Emergency Coordinator functions as described above in paragraph B.2 will later be assumed by the TSC Emergency Coordinator and/or the EOF Director at the Emergency Operations Facility as these organizations are staffed and ready to take over its functions.

This assumption of the Emergency Coordinator functions will take place for the Alert, Site Area Emergency and General Emergency categories.

B.4 Functional Responsibilities of the Emergency Coordinator

The functional responsibilities of the Emergency Coordinator are described in paragraph B.2. Protective Action recommendations to state and local authorities is initially vested with the Shift Manager/ Emergency Coordinator. As the Emergency Operations Facility (EOF) becomes operational, the EOF Director is the person who is responsible for making protective action recommendations.

B.5 Minimum Staffing Requirements

The positions, title and major tasks to be performed by the persons assigned to the functional areas of emergency activity at the station are described in Emergency Plan Implementing Procedures. These assignments shall cover the emergency functions in Figure B-1 (a and b). The minimum on-shift staffing reflective of two units in operation is as indicated in Figure B-1a. The capability to augment on-shift resources after declaration of an emergency is as indicated in Figure B-1b. The functional tasks to be performed by persons assigned to the areas of emergency activity are as designated in Emergency Plan Implementing Procedures.

A detailed analysis demonstrating that on-shift personnel assigned emergency plan implementation functions are not assigned responsibilities that would prevent the timely performance of their assigned functions as specified in Figure B-1a. See CNS-OSSA-12212012 Rev: 0.

B.6 Site Functional Area Interfaces

Figures B-5a and B-5b describe and specify the interfaces between and among the functional areas of emergency activity, licensee headquarters support, local services support, and state/local government response organizations. Figure B-5a is for use prior to activation of the EOF. Figure B-5b is for use after the EOF is established.

B.7 Augmented Support of Site Emergency Organization

Upon declaration of an Alert, Site Area Emergency or General Emergency, the EOF organization will be alerted and personnel will report to the EOF as soon as possible. The EOF organization is described in Emergency Plan Implementing Procedures. The Public Affairs organization is described in the implementing procedure for JIC activation. Refer to Section G for the Public Affairs function. Figure B-3 shows the minimum staff required to declare the EOF operational. The EOF will be staffed using 75 minutes as a goal for the minimum staff to be in place and operational.

In addition to the minimum staff shown in Figure B-3, other personnel are expected to report to the EOF to augment the minimum staff. This augmentation would occur gradually and would range from a few minutes to a few hours depending on the proximity of the personnel to the EOF.

The organization identified in this section is capable of continuous (24 hours) operations for a protracted period. The individual responsible for assuring continuity of resources is the EOF Director. Each group's operational plan is specified in the Emergency Plan or Emergency Plan Implementing Procedures.

B.8 Contractor, Private, and Government Organizations

The Institute of Nuclear Power Operations (INPO) serves as a clearinghouse for industry wide support during an emergency. When notified of an emergency situation at a nuclear plant, INPO will provide emergency response as requested.

INPO will be able to provide the following emergency support functions:

- a. Assistance to the affected utility in locating sources of emergency manpower and equipment.
- b. Analysis of the operational aspects of the incident.
- c. Dissemination to member utilities of information concerning the incident.
- d. Organization of industry experts who could advise on technical matters.

If requested, one or more suitably qualified members of the INPO staff will report to the EOF Director and will assist in coordinating INPO's response to the emergency.

The State of South Carolina

The response provided by the State of South Carolina to an emergency developing at Oconee, Robinson or Catawba is described in the South Carolina Operational Radiological Emergency Response Plan. The principal state agency for mobilization of state resources to cope with an emergency is the Emergency Preparedness Division under the office of the Adjutant General. This agency is supported by the Bureau of Radiological Health, which provides radiological assessment and protection functions, and by other state agencies.

For a Catawba emergency, the State of South Carolina would operate out of the State Emergency Operations Center (SEOC) in West Columbia, South Carolina.

The State of North Carolina

The response by the State of North Carolina to an emergency development is described in the North Carolina Emergency Response Plan in Support of Catawba Nuclear Site.

The principal state agency for mobilization of State resources to cope with an emergency is the Division of Emergency Management. This agency is supported by the Division of Radiation Protection for radiological assessment and protection functions, and by other State agencies.

The state organization, when it is mobilized as the State Emergency Response Team (SERT), becomes the primary response authority. For an emergency at Catawba, the SERT organization is established in the Emergency Operations Center in Raleigh, N.C.

Nuclear Regulatory Commission

The response provided by the NRC to an emergency developing at a Duke nuclear station is described in the NRC Region II Emergency Plan. The representative of the NRC who would provide input to the EOF Director is the Region II Regional Administrator/ designee. A workspace and a telephone have been provided in the EOF for this NRC representative.

The role of the NRC in an emergency situation is to provide oversight and recommendations on licensee actions.

County Governments

In an emergency situation at a nuclear station, county governments are immediately notified of the accident. They have the primary responsibility for the protection of the citizens within the county boundaries. The principal Duke Energy contact with county government is through the Emergency Preparedness Director or designee. This contact will be maintained by the TSC until relieved by EOF Off-Site Agency Communicators.

It is recognized that the county council, the chief executive of the county, and mayors of local communities have responsibilities in an emergency situation as well. The Government Agency Liaison on the staff of the Public Information Manager serves as the primary Duke Energy contact with these people.

Risk Management Companies

Risk management companies will be notified of emergency conditions by the EOF staff. Risk Management companies would set up claims payments and other such capabilities at facilities appropriate to the emergency.

Contractors

The contractor who may be requested to respond is Westinghouse. Westinghouse will operate from Pittsburgh, Pennsylvania, with a small contingent at the plant.

B.9 Local Agency Support Services

State, local and county agencies responsible for public health and safety work through the Emergency Preparedness Agency's Emergency Operations Center in the affected county until the State Emergency Response Team establishes its headquarters; Mecklenburg and Gaston counties, North Carolina; York Municipal-County Emergency Preparedness Agency, York County, South Carolina. The EOF coordinates with the agencies necessary to support the emergency condition. Agencies that have agreed to provide support, as necessary to Catawba Nuclear Station and surrounding areas, are listed below: (Agreement Letters in Appendix 5)

B.9.a Law Enforcement, Emergency Traffic Control, Related Police Matters

1. York County Sheriff's Department (York, SC)
2. South Carolina Highway Patrol (SC Highway Patrol, Dist. 4, Chester, SC)

B.9.b Early Warning or Evacuation of the Populace

1. York County Emergency Management (Rock Hill, SC)
2. Gaston County Emergency Management (Gastonia, NC)
3. Charlotte-Mecklenburg Emergency Management Office (Charlotte, NC)
4. South Carolina Emergency Management Division (Columbia, SC)
5. North Carolina Department of Department of Public Safety

B.9.c Radiological Emergency Monitoring Assistance

1. US/DOE Radiological Assistance Team, Savannah River Operations Office (Aiken, SC)
2. South Carolina Department of Health and Environmental Control, Bureau of Radiological Health, (Columbia, SC)
3. North Carolina Department of Environment, Health and Natural Resources, Division of Radiation Protection (Raleigh, NC)
4. Civil Air Patrol, North Carolina Wing (Charlotte, NC)

B.9.d Hospitals, Medical Support

1. Piedmont Medical Center (Rock Hill, SC)
2. Carolinas Medical Center (Charlotte, NC)
3. Carolinas Emergency Medicine Specialists, P.A. (Rock Hill, SC)
4. REACTS Facility, DOE (Oak Ridge, TN)

B.9.e Ambulance Service

1. Piedmont Medical Center (Rock Hill, SC)

B.9.f Fire-Fighting

1. Bethel Volunteer Fire Department (Clover, SC)

B.9.g Public Health and Safety, Evaluation of the Radiological Situation.

1. York County Health Department (Rock Hill, SC)
2. South Carolina Department of Health and Environmental Control, Bureau of Radiological Health (Columbia, SC)
3. North Carolina Department of Environment, Health and Natural Resources, Division of Radiation Protection (Raleigh, NC)

B.9.h Local, State and Federal Support Responsibilities

Agreements have been made with local, state and federal agencies to provide fire protection, medical support, ambulance and rescue service, and Hostile Action response. Implementation of the emergency plans of the Emergency Preparedness Agencies of three adjacent counties will provide assistance and logistics support if evacuation of portions of the ten mile EPZ becomes necessary. The emergency plans of the Emergency Preparedness Agencies in York County where the station is located, and in Mecklenburg and Gaston Counties, North Carolina, as they relate to the protection of the public who may be affected by an emergency at Catawba, all address the following aspects:

1. Notification of their own personnel and other agencies involved, including the Sheriff's Department, the Highway Patrol, police, rescue squads, fire departments and the Red Cross.
2. Law enforcement and traffic control.
3. Notification or warning of persons in affected areas
4. Evacuation, as necessary, to designated schools or other public buildings out of the affected area, where shelter, food, overnight accommodations, communications, medical care, etc. would be made available.
5. Assistance and cooperation with related agencies in other counties, Duke Energy, and other state and federal agencies.

TABLE B-1a
CATAWBA NUCLEAR STATION
MINIMUM ON-SHIFT ERO STAFFING REQUIREMENTS FOR EMERGENCIES

Functional Area	Major Tasks	Emergency Positions	Shift Staffing
1. Plant Operations and Assessment of Operational Aspects (a)	--	Unit Supervisor (SRO) CR Supervisor (SRO) Control Room Operator (RO) Auxiliary Operator (AO)	1 1 3 3
2. Emergency Direction and Control	Command and Control	Operations Shift Manager	1
3. Notification & Communication	Licensee	Operator (SRO/RO/NLO)	1 ^(b)
	Local/ State	Operator (SRO/RO/NLO)	1 ^(b)
	Federal	Operator (SRO/RO/NLO)	1 ^(b)
4. Radiological Assessment	Dose Assessment	RP Qualified Individual	1
	In-plant Surveys	RP Qualified Individual	1
	Onsite Surveys	RP Qualified Individual	1
	Chemistry	Chemistry Technician	1
5. Plant System Engineering, Repair, and Corrective Actions	Tech Support – OPs	Shift Technical Advisor	1
	– Core Damage	Shift Technical Advisor	1 ^(b)
	Repair and Corrective Actions	Mechanical Maintenance IAE Maintenance	1 2
6. In-Plant PAs	Radiation Protection (such as access control, job coverage and personnel monitoring)	RP Qualified Individual	2 ^(b)
7. Fire Fighting (c)	--	Fire Brigade Lead (RO/SRO/NLO) Fire Brigade Member (NLO) Fire Brigade Member (SPOC)	1 2 2 ^(b)
8. 1 st Aid and Rescue	--	MERT (d)	2
9. Site Access Control and Accountability	Security & Accountability	SAS Operator Security Personnel	1 (e)
Minimum # of Personnel:			23

(a) The Control Room staff complement is reflective of 2 Units in operation in accordance with §50.54(m).

(b) May be performed by an individual filling another position provided they are qualified to do the collateral function.

(c) The Fire Brigade requirement of five members is met by using three personnel from Operations (including the Fire Brigade Leader) and two personnel from SPOC (SLC 16.13-1).

(d) The Medical Emergency Response Team (MERT) can be filled by any qualified technician.

(e) Per Duke Energy CNS Security Plan.

TABLE B-1b
CATAWBA NUCLEAR STATION
AUGMENTED ERO STAFFING FOR EMERGENCIES
PAGE 1 of 2

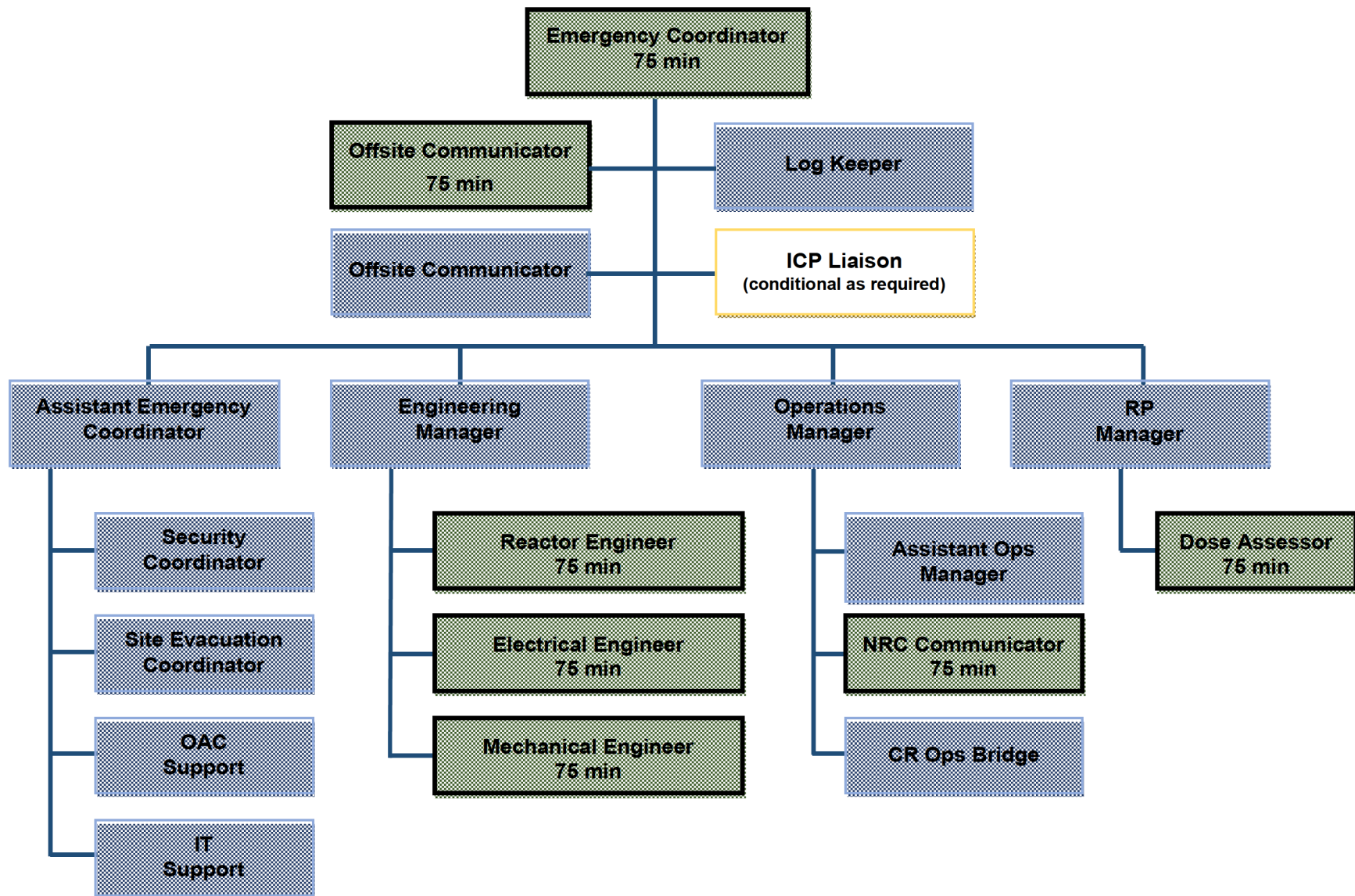
Functional Area	Major Tasks	Standard ERO Emergency Positions	45 Min.	75 Min.	Full Staff
1. Direction and Control	Command and Control	Emergency Coordinator (EC) (TSC)		1	
		EOF Director (EOF)		1	
	Facility Control	Assistant EC (TSC)			1
		Assistant EOF Director (EOF)			1
		OSC Manager (OSC)		1	
		Assistant OSC Manager (OSC)			1
2. Notification & Comm.	Emergency Communications	Offsite Communicator (TSC)		1	1
		NRC Communicator (TSC)		1	
		Offsite Communicator (EOF)		2	
	Plant Status & Technical Activities	CR Operations Bridge (TSC)			1
		OSC Operations Liaison (OSC)			1
		State & County EOC Liaisons (EOF)			3
3. Radiological Assessment	Offsite Dose Assessment	Dose Assessor (TSC)		1	
		Dose Assessor (EOF)			2
	Offsite Surveys	FMT Members - 2 teams (OSC) (2)		4	
		FMT Coordinator (EOF)			2
	Onsite Surveys	RP Qualified Personnel (OSC)	1	1	
	In-plant Surveys	RP Qualified Personnel (OSC)	1	1	
	RP Supervisory	RP Manager (TSC)			1
		Rad Assessment Manager (EOF)		1	
RP Supervisor (OSC)				1	
4. Plant System Engineering, Repair, and Corrective Actions	Technical Support / Accident Analysis (1)	Operations Manager (TSC)			1
		Assistant Ops Manager (TSC)			1
		Engineering Manager (TSC)			1
		Reactor Engineer (TSC)		1	
		Electrical Engineer (TSC)		1	
		Mechanical Engineer (TSC)		1	
		Maintenance Supervisor (OSC)			1
		Operations Supervisor (OSC)			1
		Chemistry Supervisor (OSC)			1
		Accident Assessment Manager (EOF)		1	
		Accident Assessment Interface (EOF)			1
		Repair and Corrective Actions	Generation Supply Chain Liaison (OSC)		
	IAE Technician (OSC)			2	
	Mechanical Technician (OSC)			1	
	Rad Waste Operator			1	
	5. In-Plant PAs	Radiation Protection	RP Qualified Personnel (OSC)		6
6. Access Control (#)	Sec & Accountability	Security Coordinator (TSC)			1
		Site Evacuation Coordinator (TSC)			1
			ICP Liaison (TSC)		
7. Resource Allocation and Admin	Administration	Log Keeper (TSC)			1
		Log Keeper (OSC)			1
		Log Keeper (EOF)			1
		Services Manager (EOF)			1
	Facility Operations	OAC Support (TSC)			1
		IT Support (TSC)			1
		Emergency Planner (EOF)			1
		Data Coordinator (EOF)			1
		Services Admin/Commissary (EOF)			1
			2	29	35

TABLE B-1b
CATAWBA NUCLEAR STATION
AUGMENTED ERO STAFFING FOR EMERGENCIES
PAGE 2 of 2

Notes

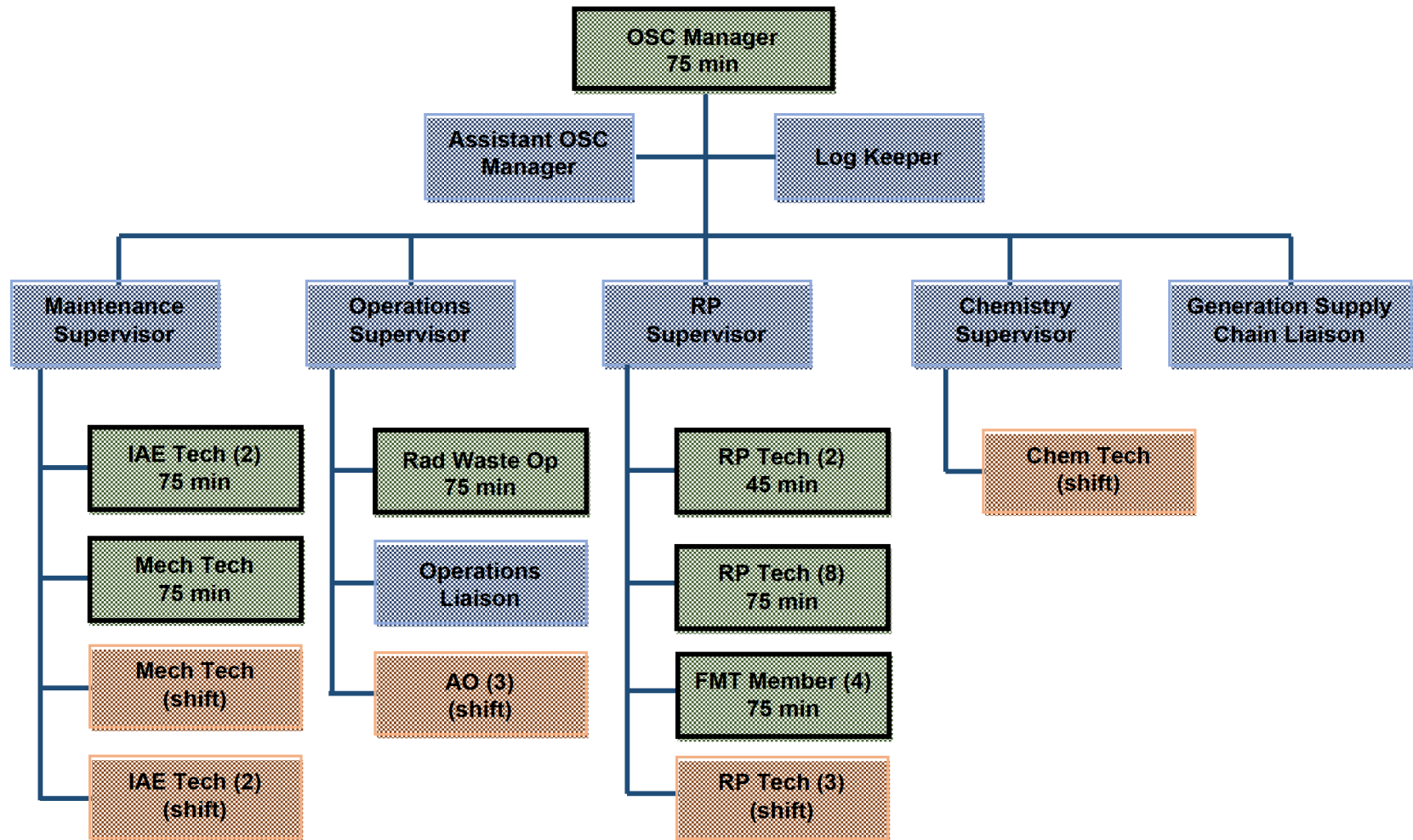
- (1) The TSC Reactor Engineer and the Accident Assessment Manager in the EOF will provide additional support in the area of core thermal hydraulics within 75 minutes.
- (2) The Field Monitoring Teams will initially report to the Operations Support Center (OSC). If needed, the Field Monitoring Teams will be dispatched from the Operations Support Center (OSC). Once the Emergency Operations Facility (EOF) Field Monitoring Coordinator is ready he/she will assume control of the Field Monitoring Teams.
- (3) An electronic card reader in conjunction with a posted building security officer fulfills the function for controlling access to the EOF during emergencies.

FIGURE B-1
CATAWBA NUCLEAR STATION
SITE EMERGENCY ORGANIZATION (TSC)



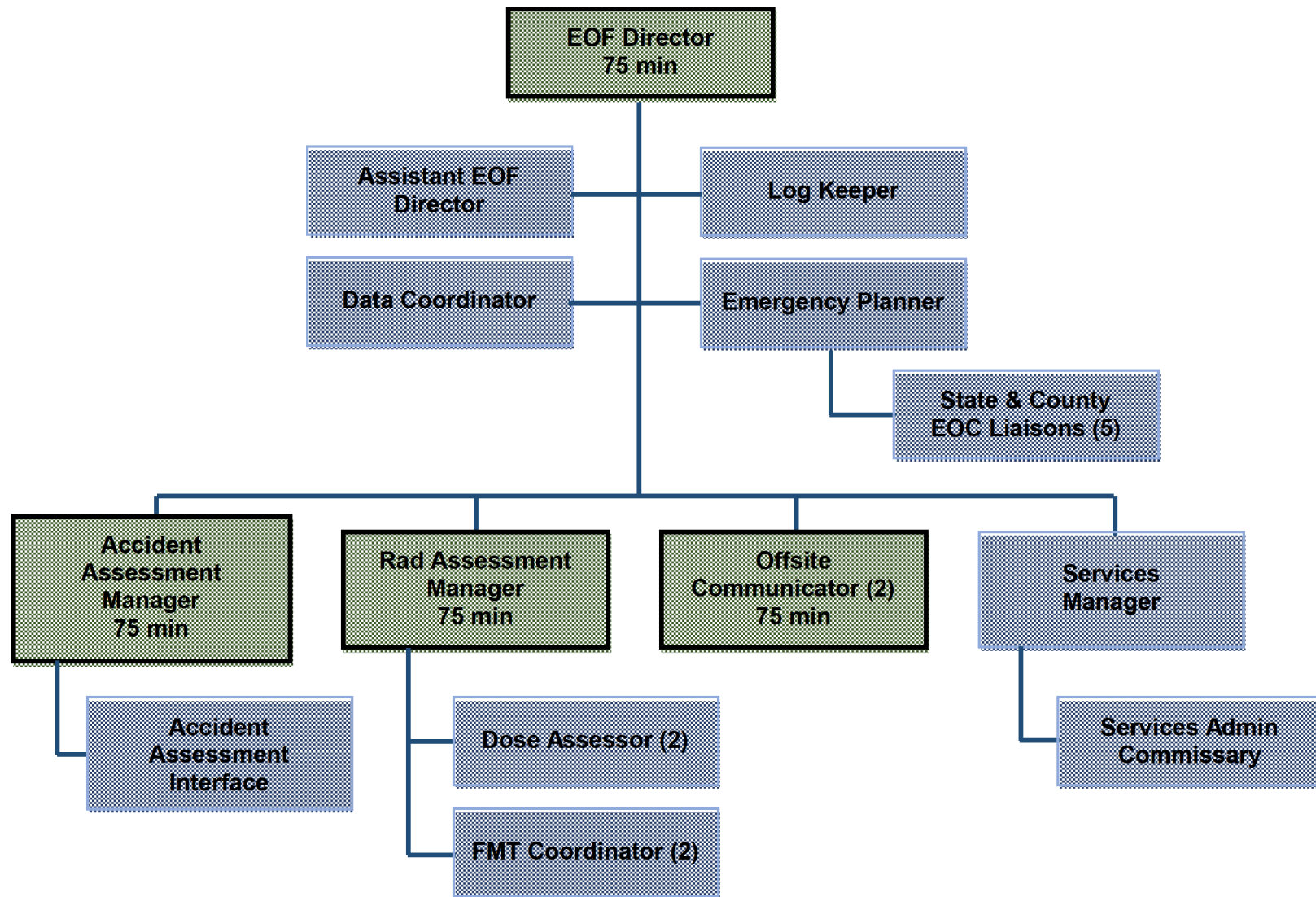
- Bold Boxes indicates minimum staff position

FIGURE B-2
CATAWBA NUCLEAR STATION
SITE EMERGENCY ORGANIZATION (OSC)



- Bold Boxes indicates minimum staff position

FIGURE B-3
CATAWBA NUCLEAR STATION
EMERGENCY OPERATIONS FACILITY (EOF)



- Bold Boxes indicates minimum staff position

FIGURE B-4
CATAWBA NUCLEAR STATION
MEDIA CENTER ORGANIZATION

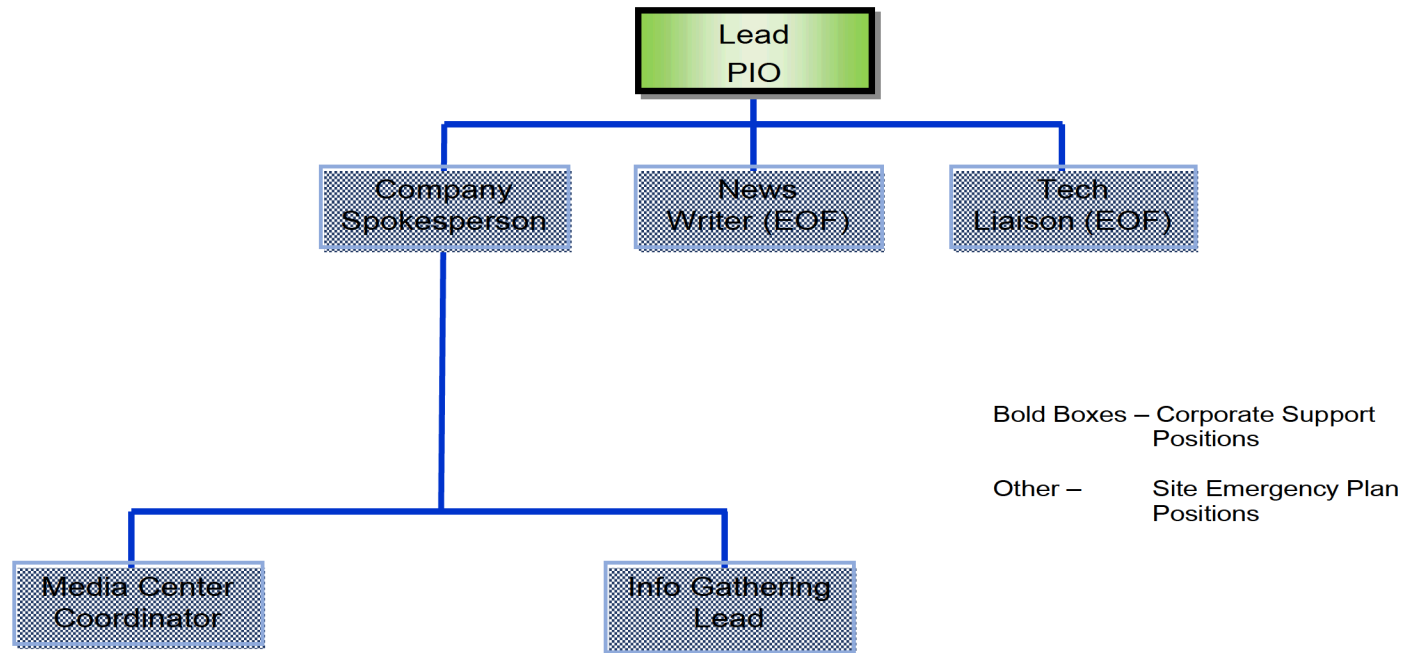
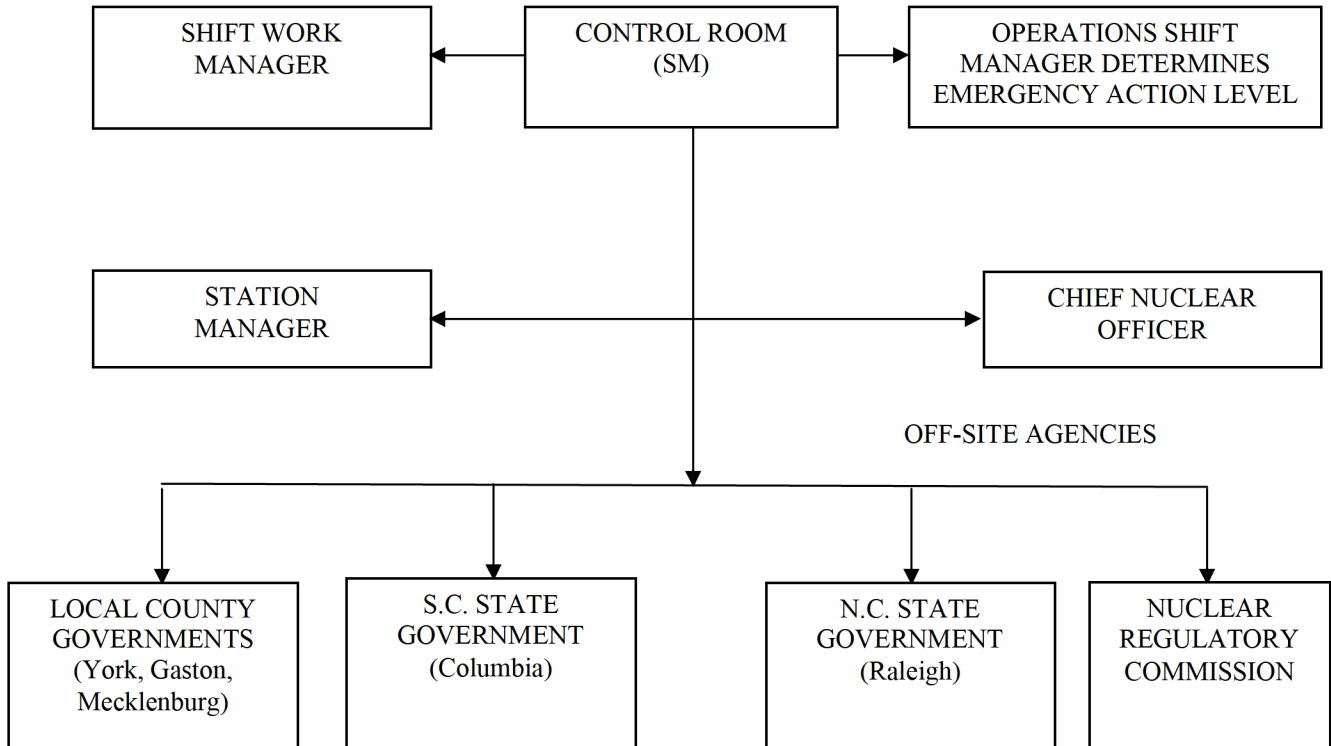


FIGURE B-5a
CATAWBA NUCLEAR STATION
INTER-RELATIONSHIPS OF RESPONSE ORGANIZATIONS
UNUSUAL EVENT*



* DOES NOT REQUIRE ACTIVATION OF ANY EMERGENCY RESPONSE ORGANIZATION

FIGURE B-5b
 CATAWBA NUCLEAR STATION
 INTER-RELATIONSHIPS OF RESPONSE ORGANIZATIONS
ALERT, SITE AREA EMERGENCY OR
GENERAL EMERGENCY

