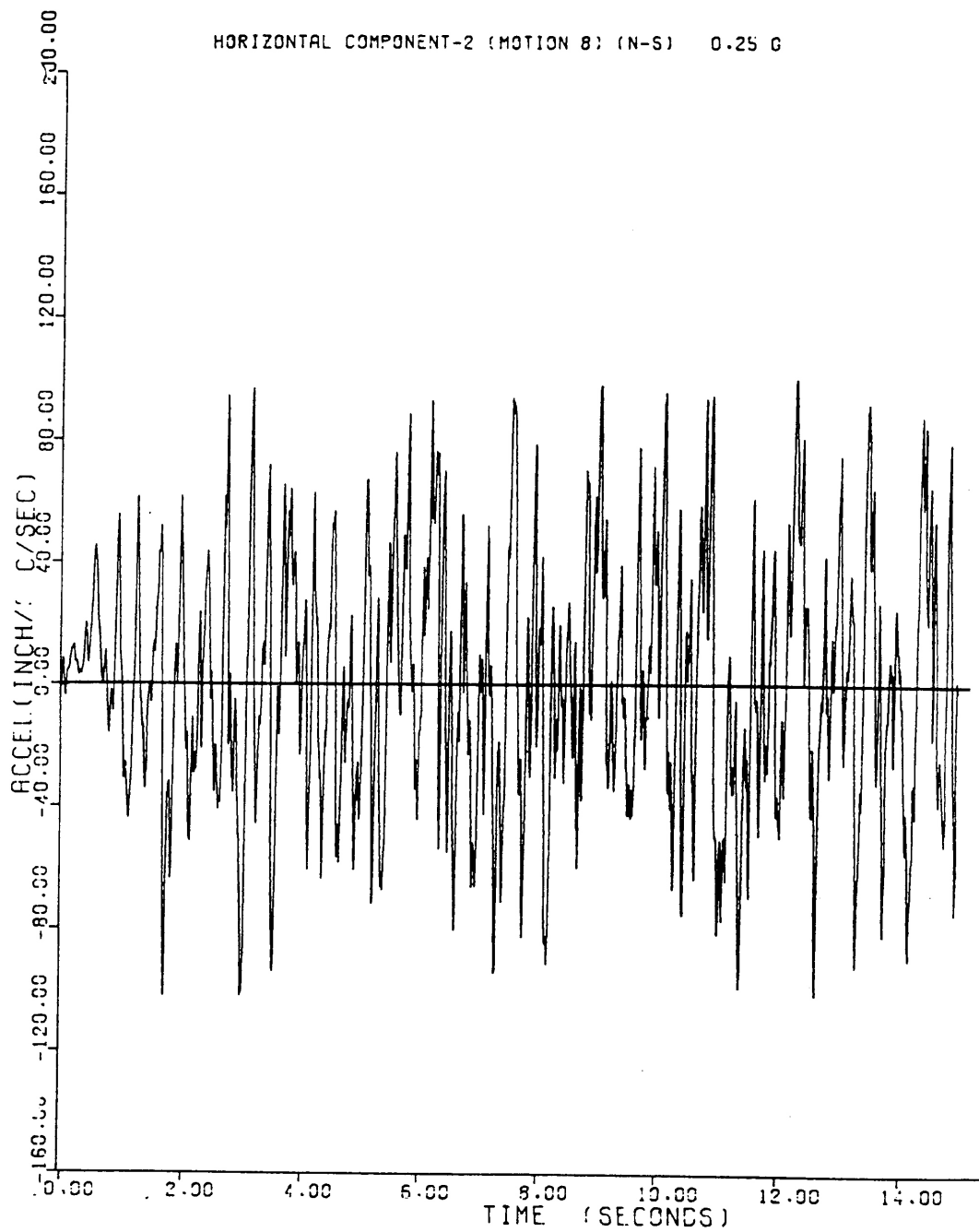
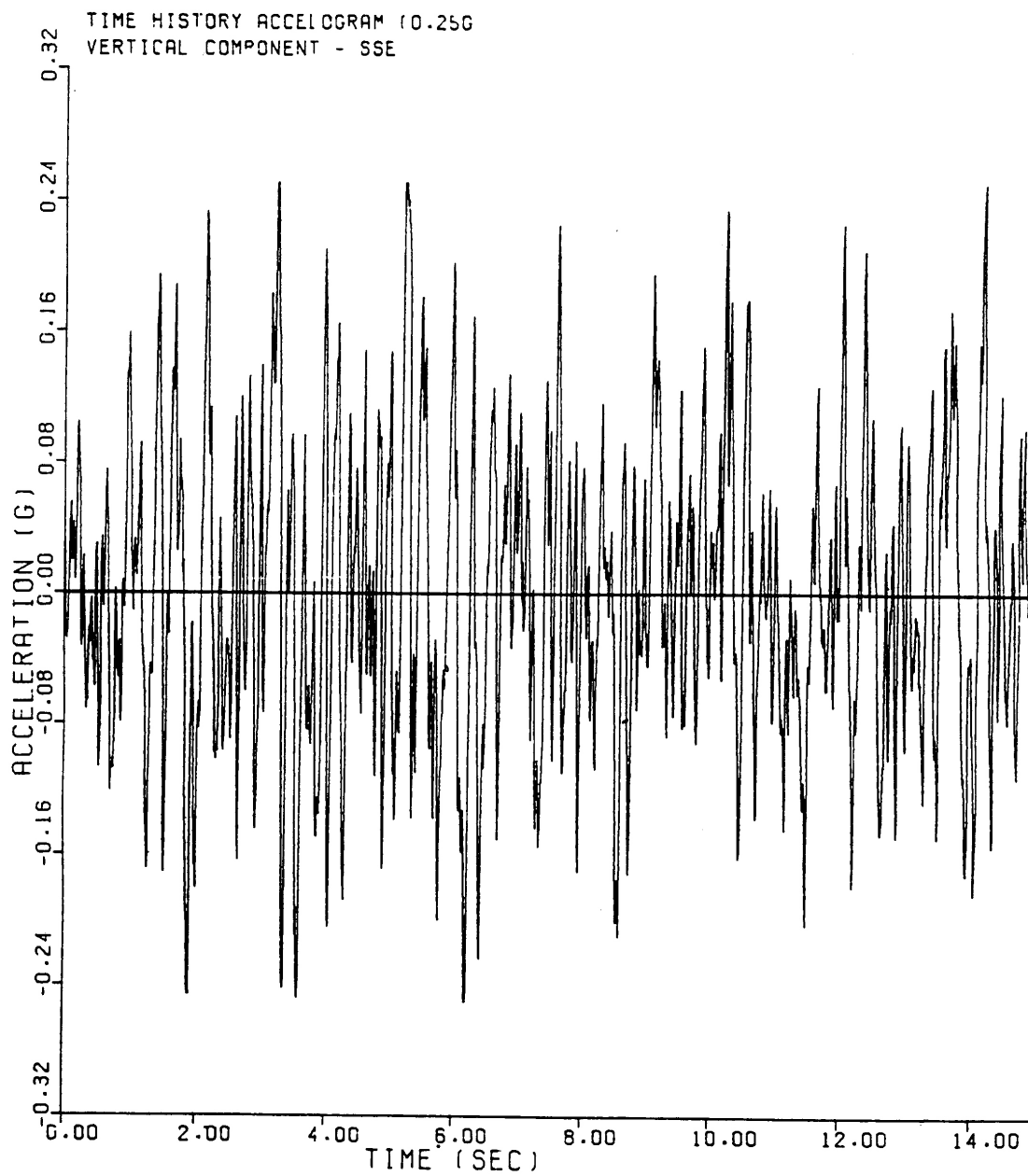


SEABROOK STATION UPDATED FINAL SAFETY ANALYSIS REPORT	Time History Accelogram (0.25g), Horizontal Component 1 - SSE	
		Figure 3.7(B)-1



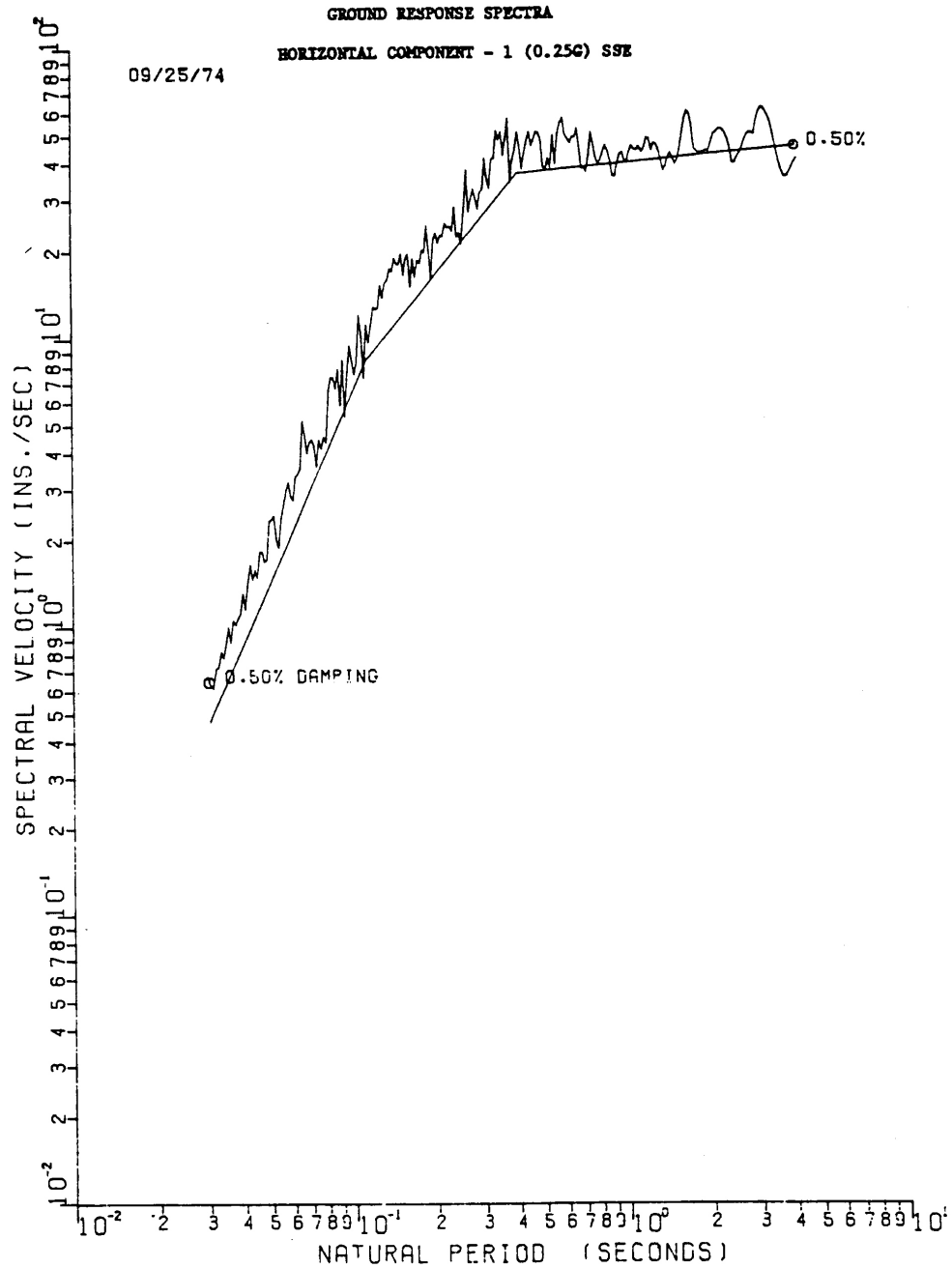
SEABROOK STATION UPDATED FINAL SAFETY ANALYSIS REPORT	Time History Accelogram (0.25g), Horizontal Component 2 - SSE	
		Figure 3.7(B)-2



SEABROOK STATION
UPDATED FINAL SAFETY
ANALYSIS REPORT

Time History Accelogram (0.25g), Vertical Component -
SSE

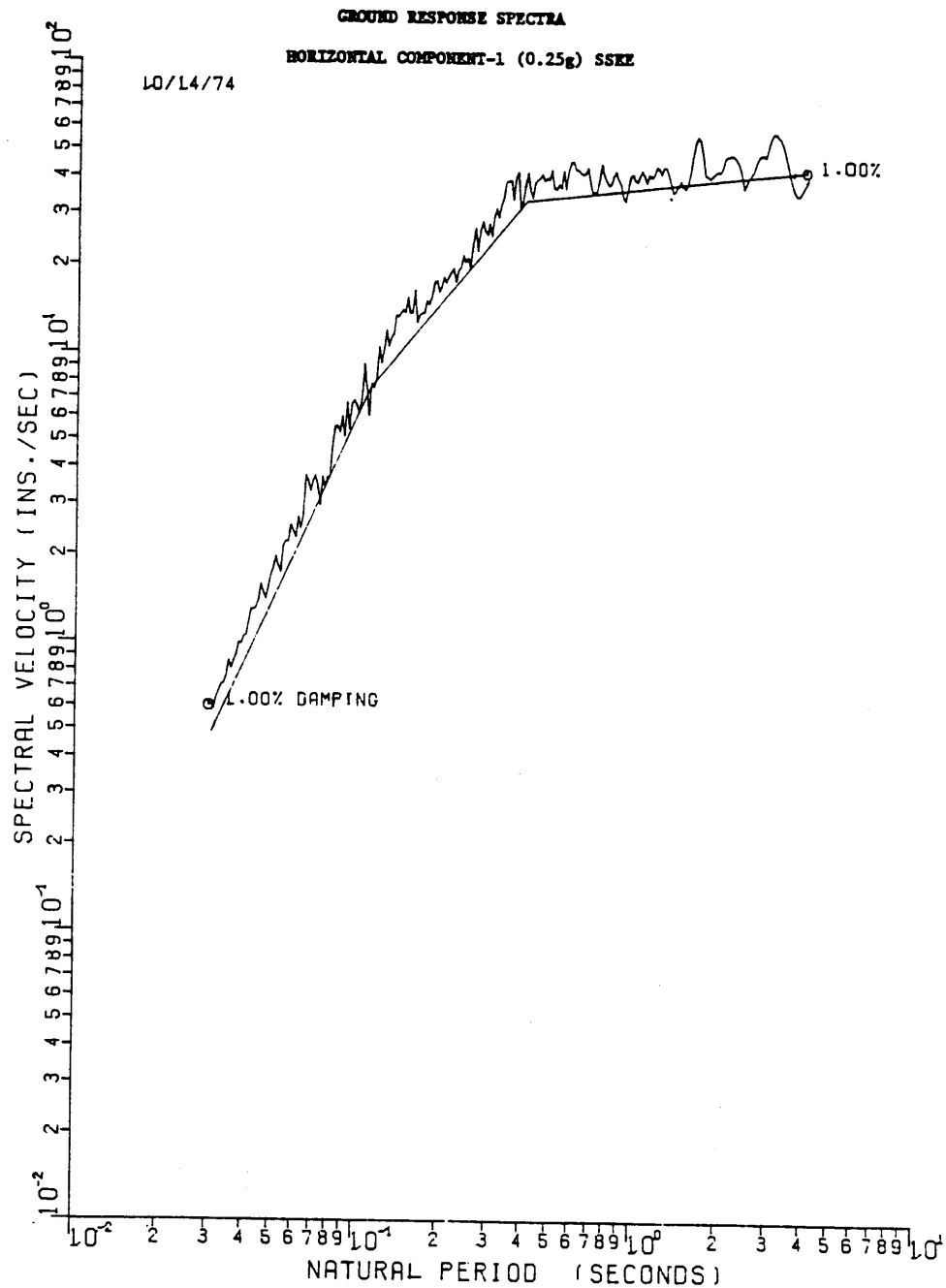
Figure 3.7(B)-3



SEABROOK STATION
UPDATED FINAL SAFETY
ANALYSIS REPORT

0.50% Critical Damping Ground Response Spectrum,
Horizontal Component 1 - SSE

Figure 3.7(B)-4



SEABROOK STATION
 UPDATED FINAL SAFETY
 ANALYSIS REPORT

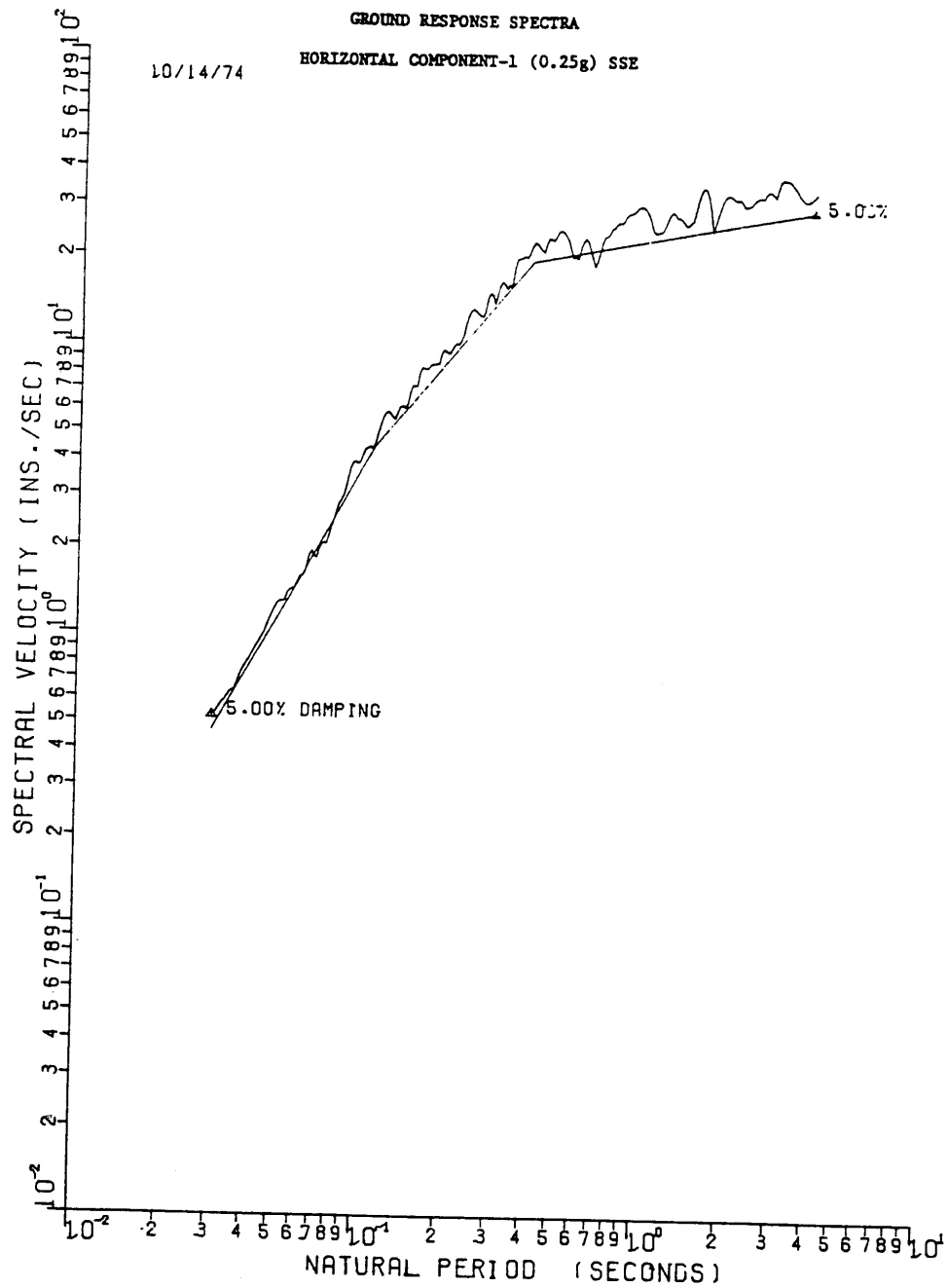
1% Critical Damping Ground Response Spectrum,
 Horizontal Component 1 - SSE

Figure 3.7(B)-5



Figure 3.6(B)-6

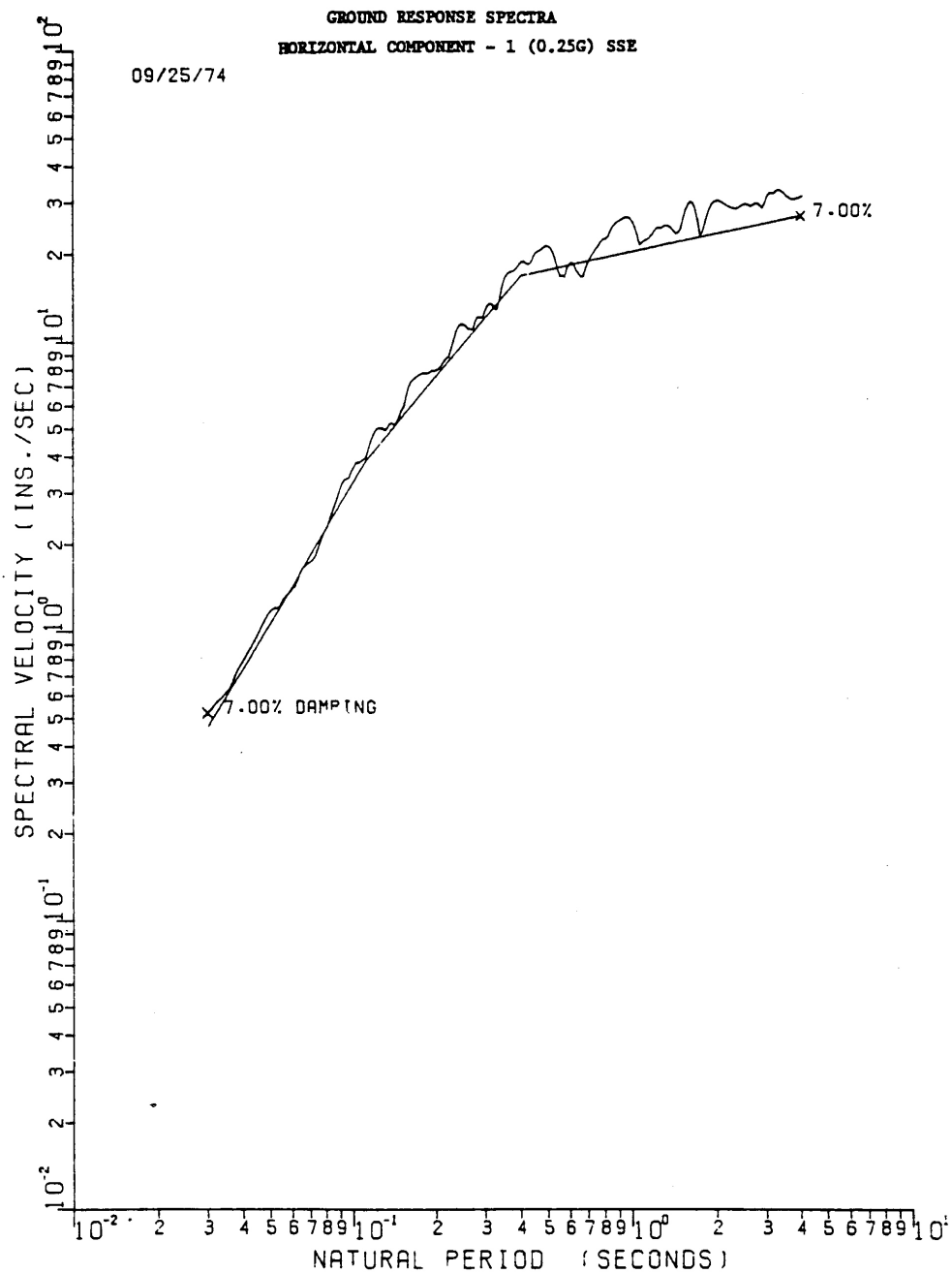
SEABROOK STATION UPDATED FINAL SAFETY ANALYSIS REPORT	Pressurizer Surge Line Pipe Whip Restraint Protecting Steam Generator Blowdown and Safety Injection Lines - Containment Zone 45B	
		Figure 3.6(B)-6



SEABROOK STATION
UPDATED FINAL SAFETY
ANALYSIS REPORT

5% Critical Damping Ground Response Spectrum,
Horizontal Component 1 - SSE

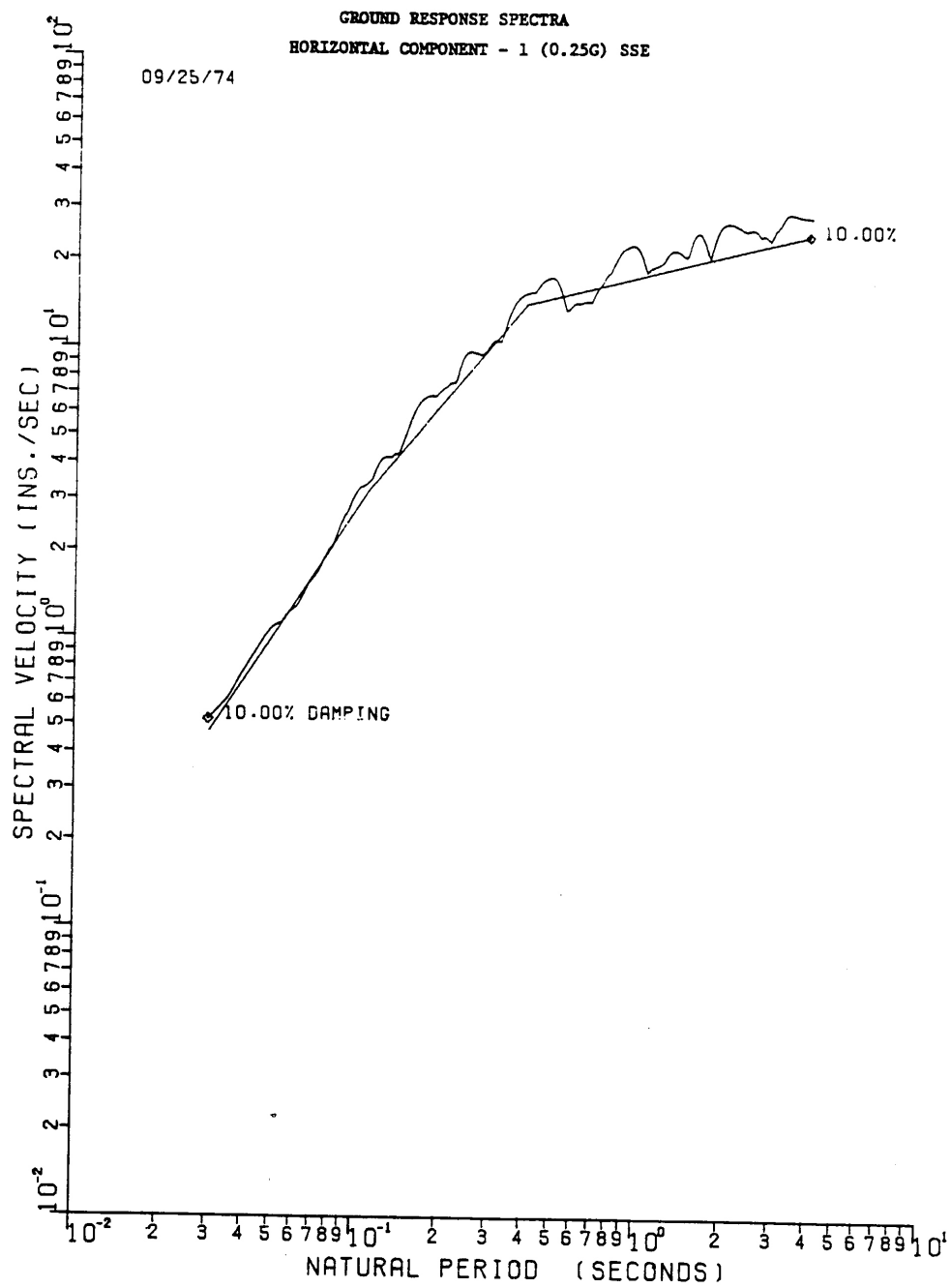
Figure 3.7(B)-7



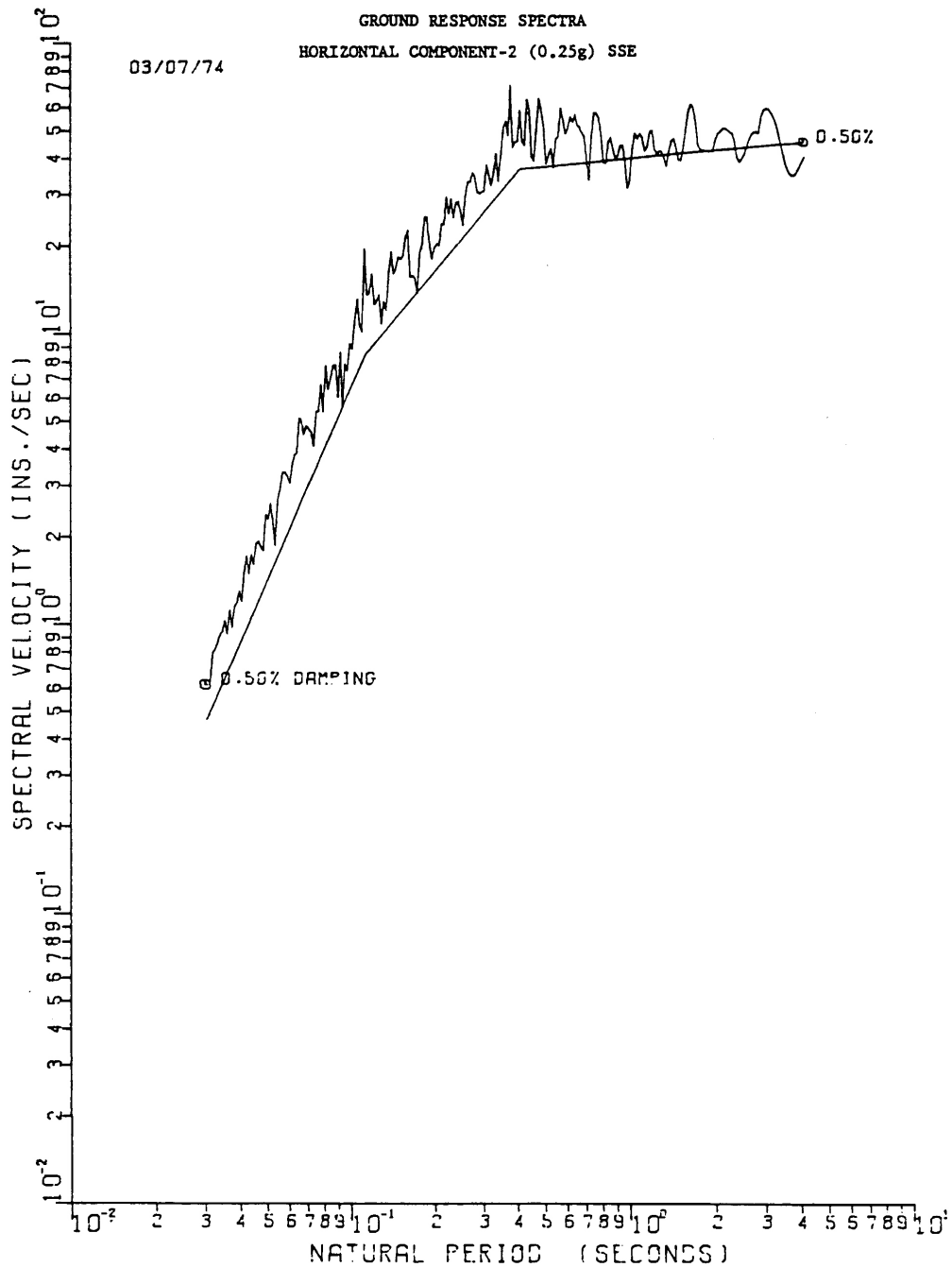
SEABROOK STATION
 UPDATED FINAL SAFETY
 ANALYSIS REPORT

7% Critical Damping Ground Response Spectrum,
 Horizontal Component 1 - SSE

Figure 3.7(B)-8



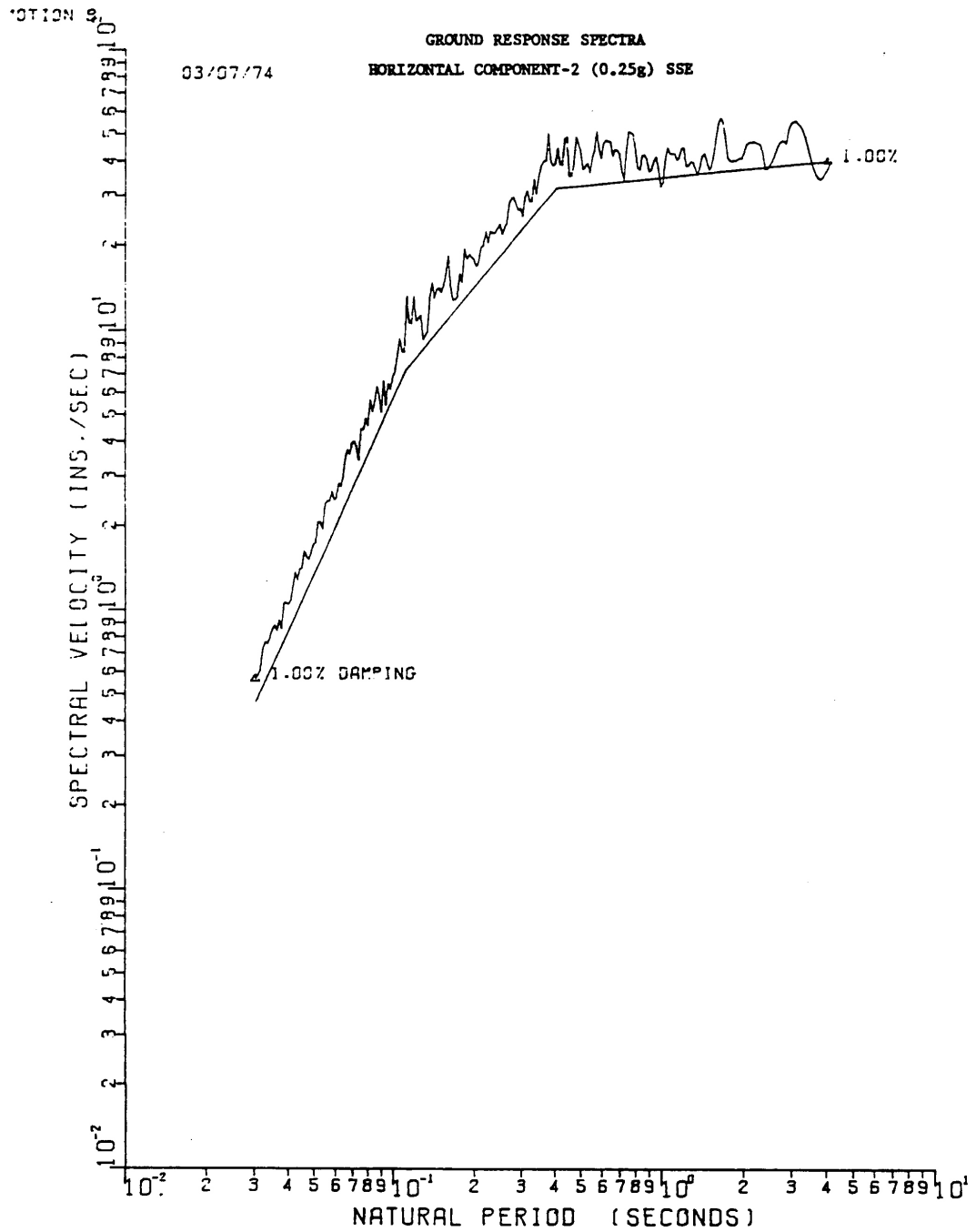
SEABROOK STATION UPDATED FINAL SAFETY ANALYSIS REPORT	10% Critical Damping Ground Response Spectrum, Horizontal Component 1 - SSE	
		Figure 3.7(B)-9



SEABROOK STATION
UPDATED FINAL SAFETY
ANALYSIS REPORT

0.5% Critical Damping Ground Response Spectrum,
Horizontal Component 2 - SSE

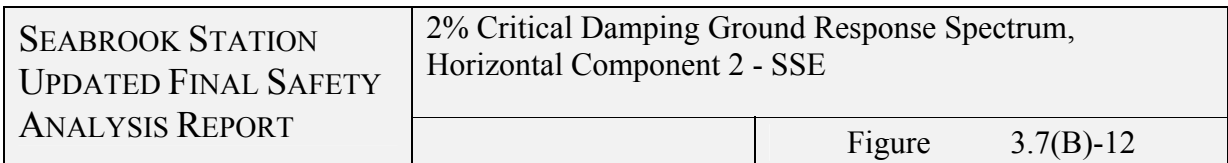
Figure 3.7(B)-10

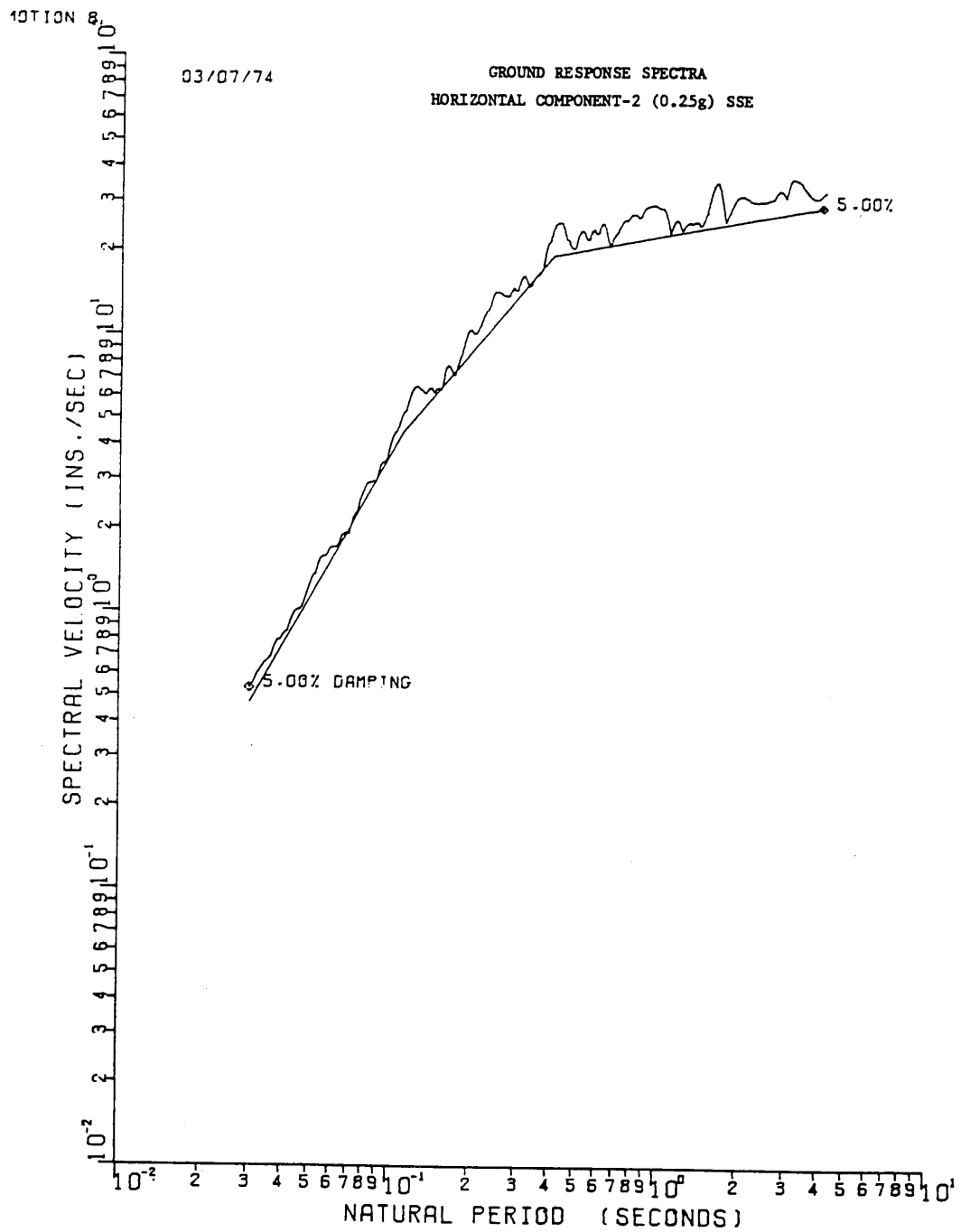


SEABROOK STATION
UPDATED FINAL SAFETY
ANALYSIS REPORT

1% Critical Damping Ground Response Spectrum,
Horizontal Component 2 - SSE

Figure 3.7(B)-11

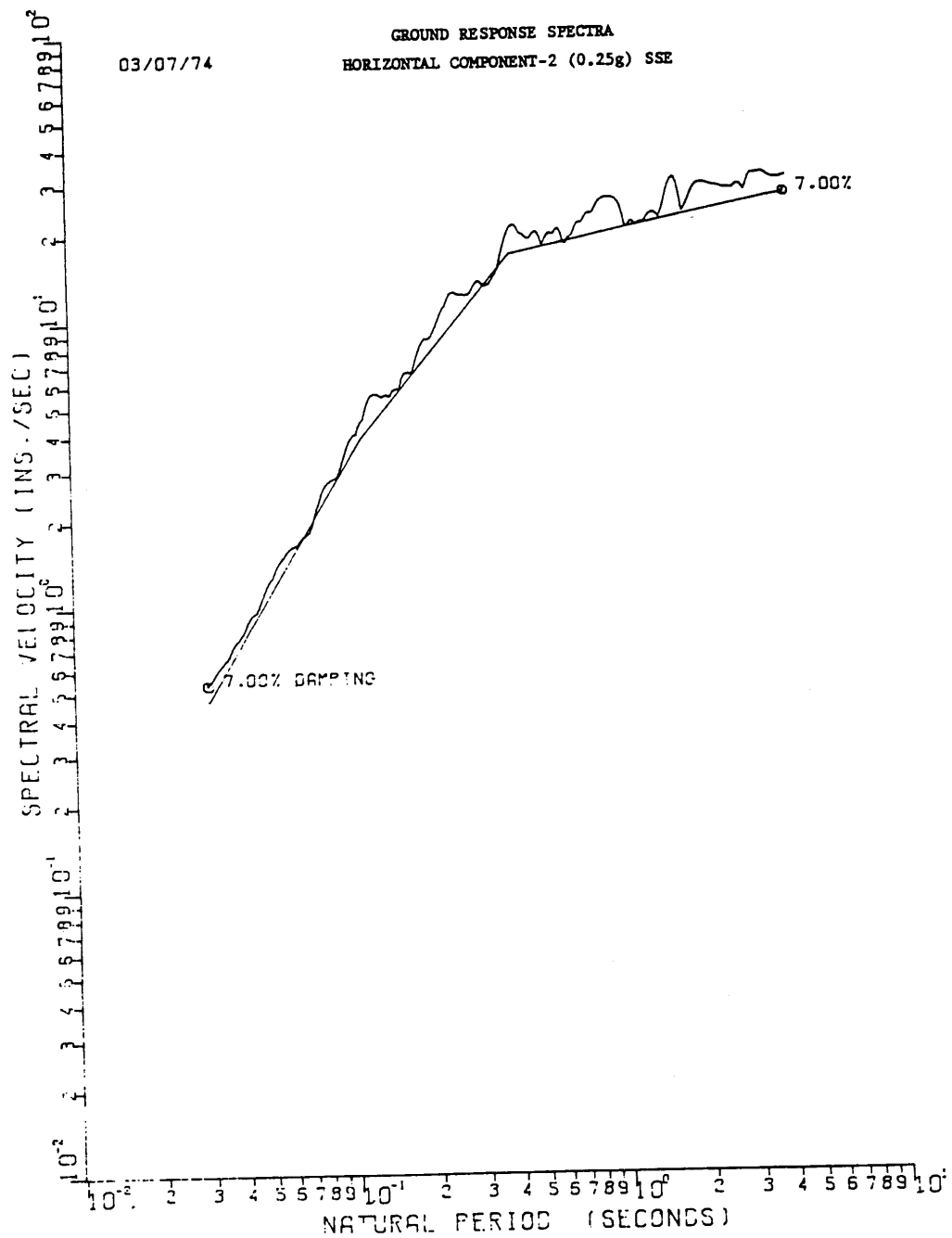




SEABROOK STATION
UPDATED FINAL SAFETY
ANALYSIS REPORT

5% Critical Damping Ground Response Spectrum,
Horizontal Component 2 - SSE

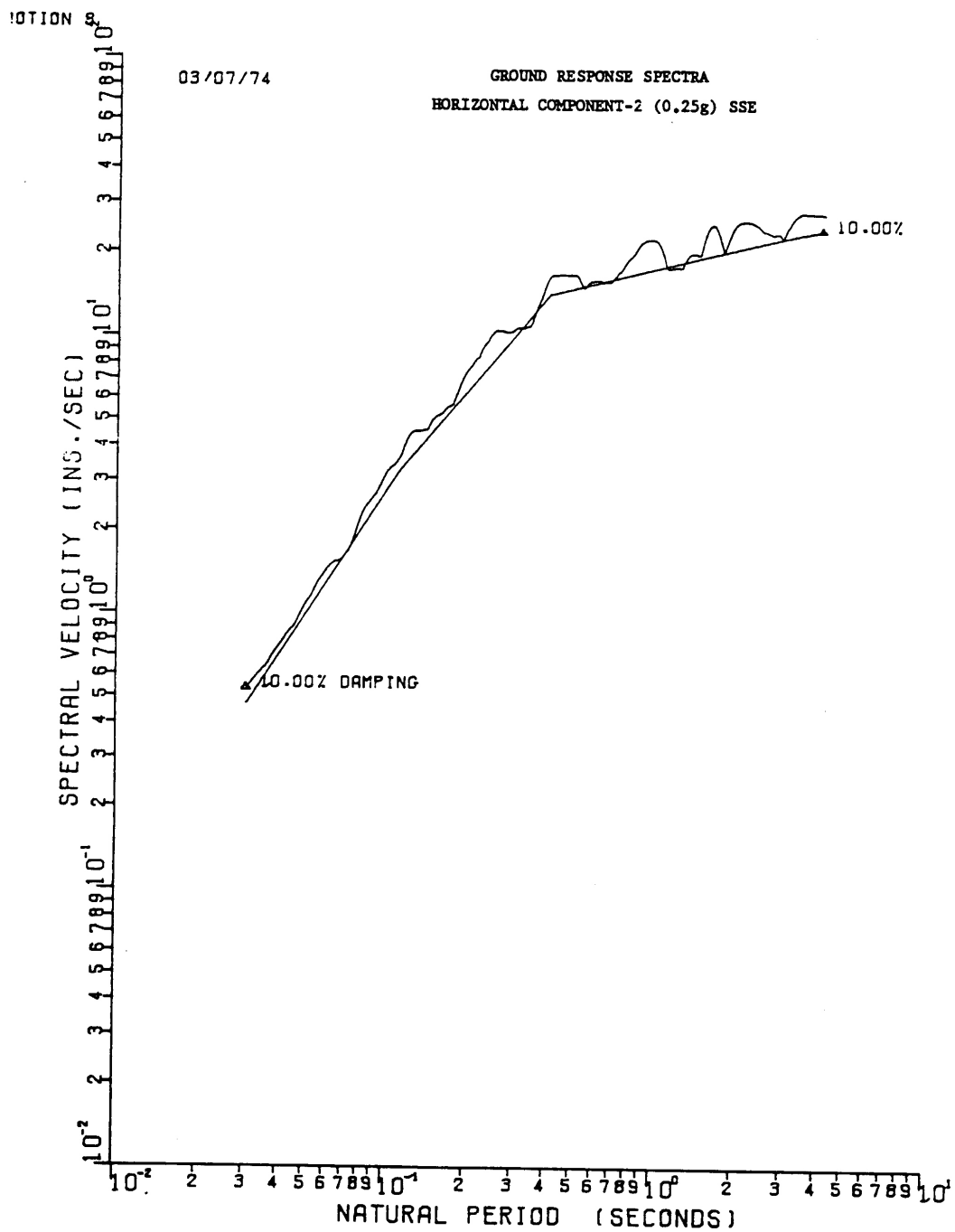
Figure 3.7(B)-13



SEABROOK STATION
UPDATED FINAL SAFETY
ANALYSIS REPORT

7% Critical Damping Ground Response Spectrum,
Horizontal Component 2 - SSE

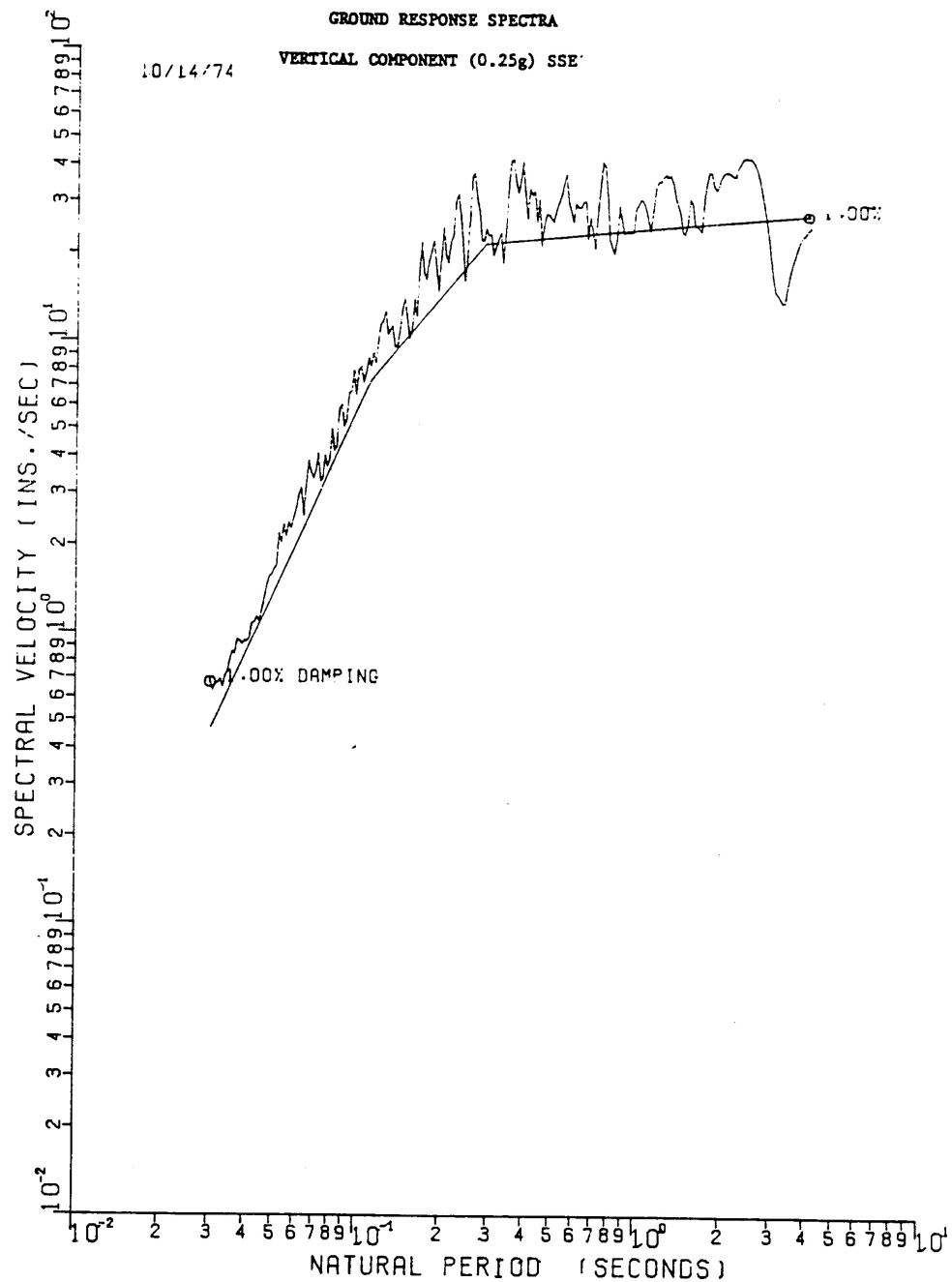
Figure 3.7(B)-14



SEABROOK STATION
UPDATED FINAL SAFETY
ANALYSIS REPORT

10% Critical Damping Ground Response Spectrum,
Horizontal Component 2 - SSE

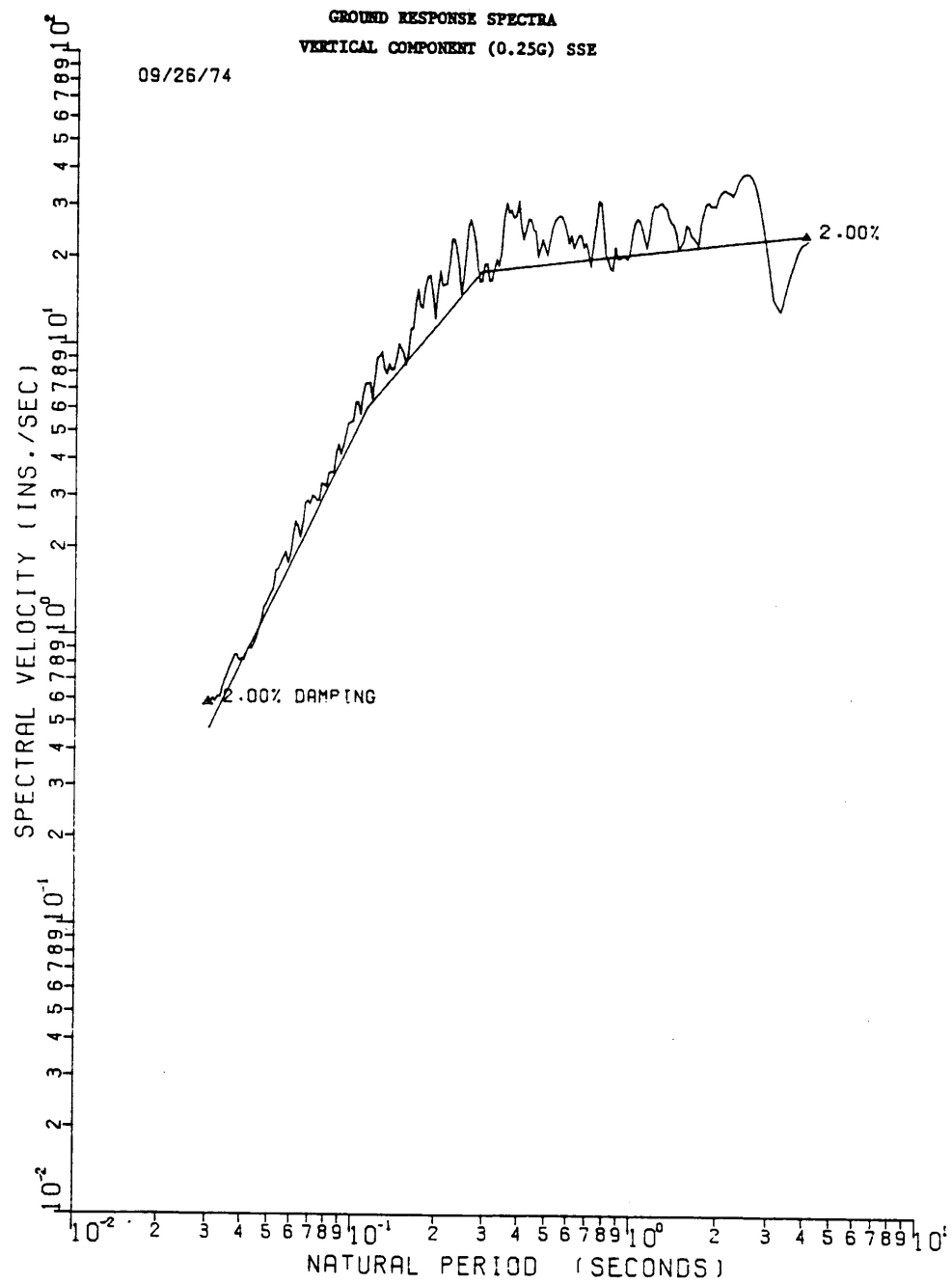
Figure 3.7(B)-15



SEABROOK STATION
UPDATED FINAL SAFETY
ANALYSIS REPORT

1% Critical Damping Ground Response Spectrum, Vertical
Component - SSE

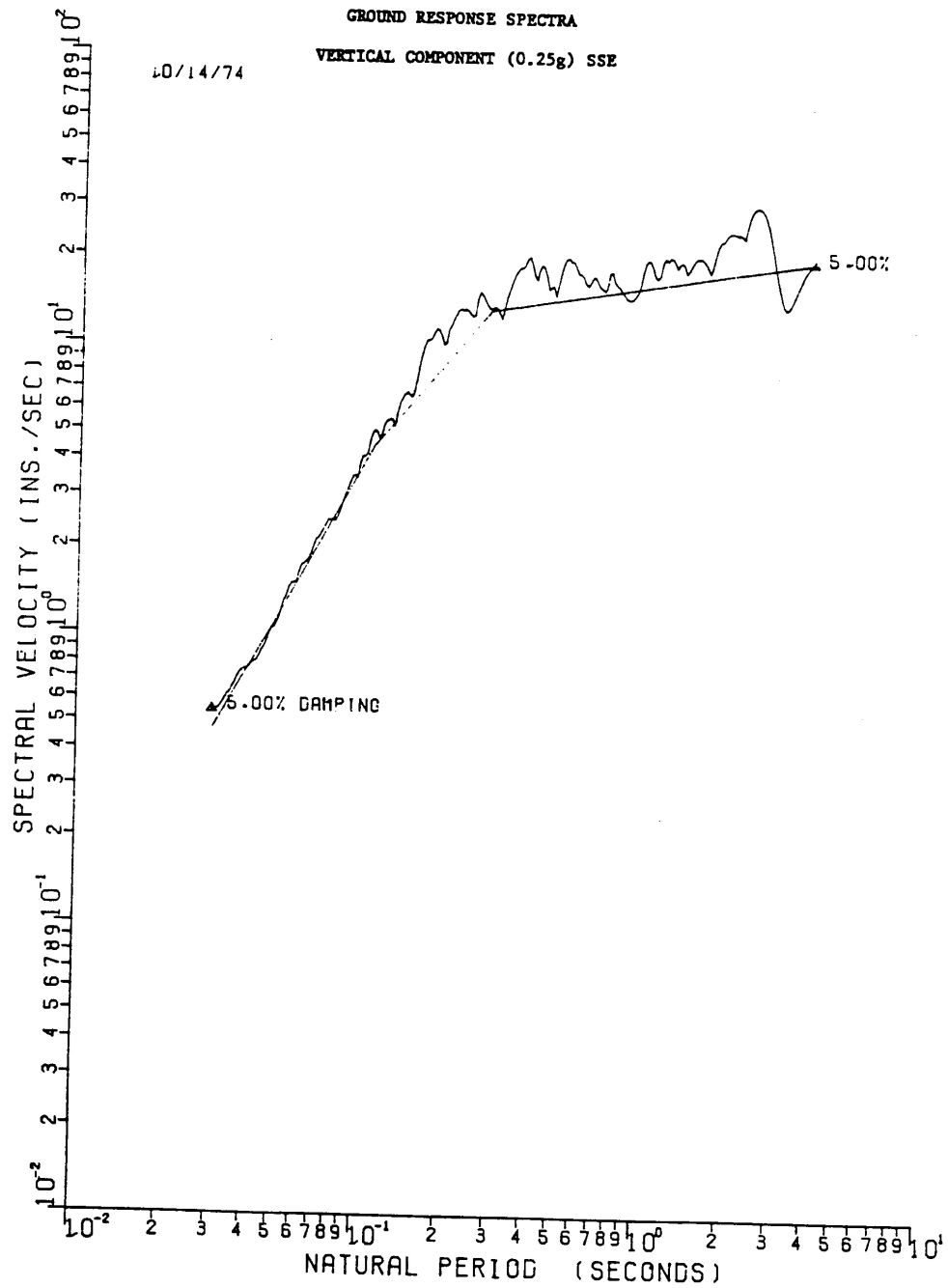
Figure 3.7(B)-16



SEABROOK STATION
UPDATED FINAL SAFETY
ANALYSIS REPORT

2% Critical Damping Ground Response Spectrum, Vertical
Component - SSE

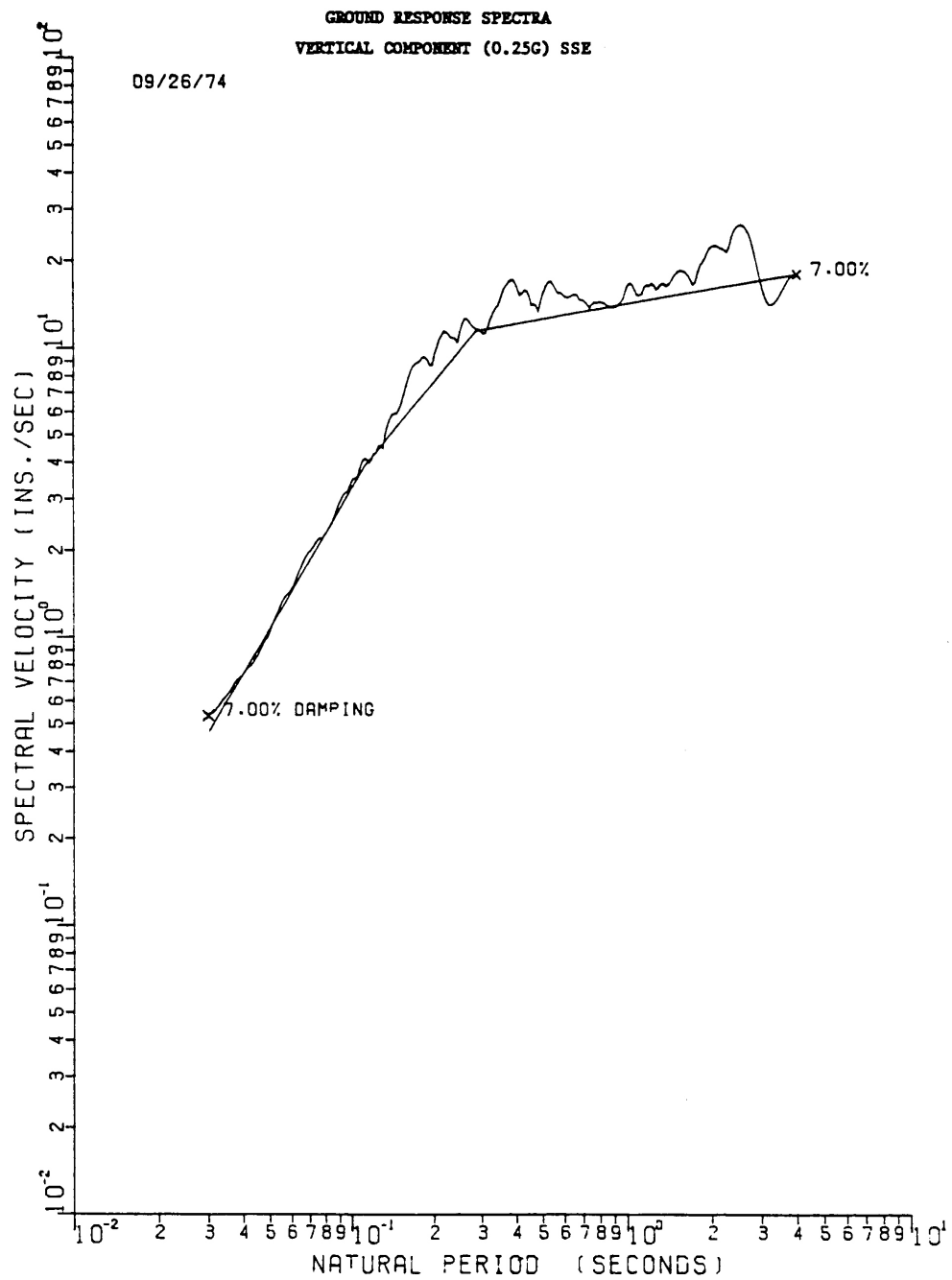
Figure 3.7(B)-17



SEABROOK STATION
UPDATED FINAL SAFETY
ANALYSIS REPORT

5% Critical Damping Ground Response Spectrum, Vertical
Component - SSE

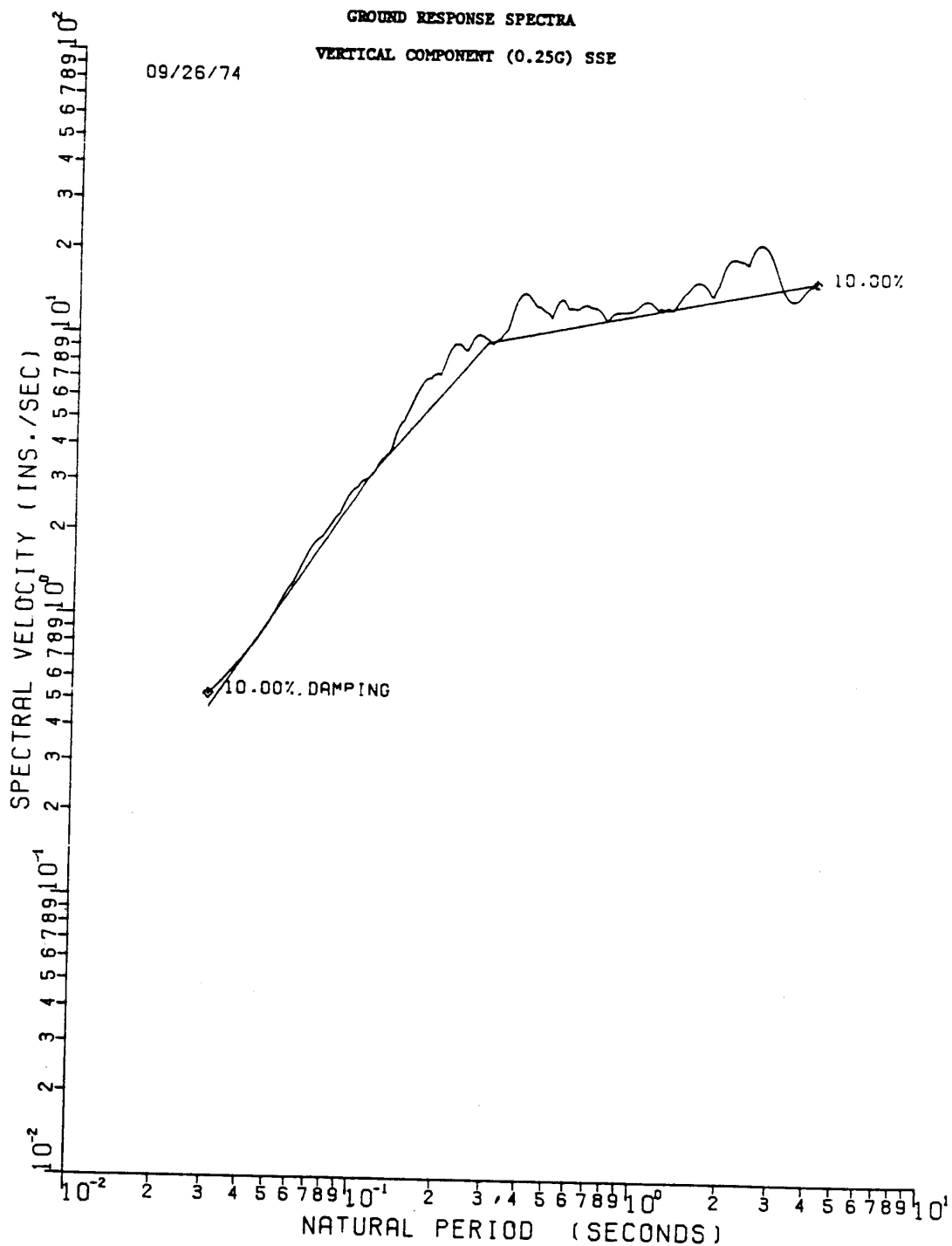
Figure 3.7(B)-18



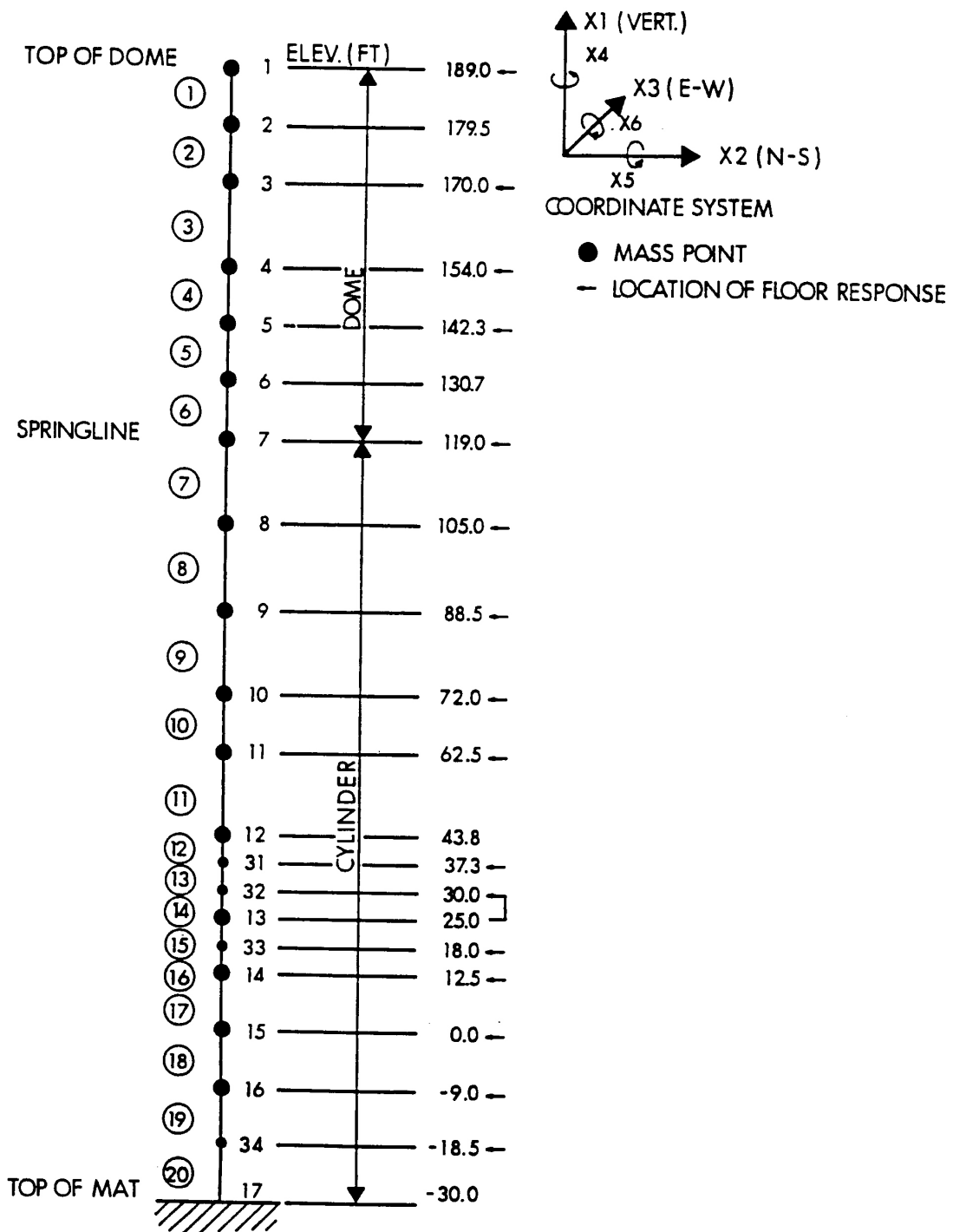
SEABROOK STATION
UPDATED FINAL SAFETY
ANALYSIS REPORT

7% Critical Damping Ground Response Spectrum, Vertical
Component - SSE

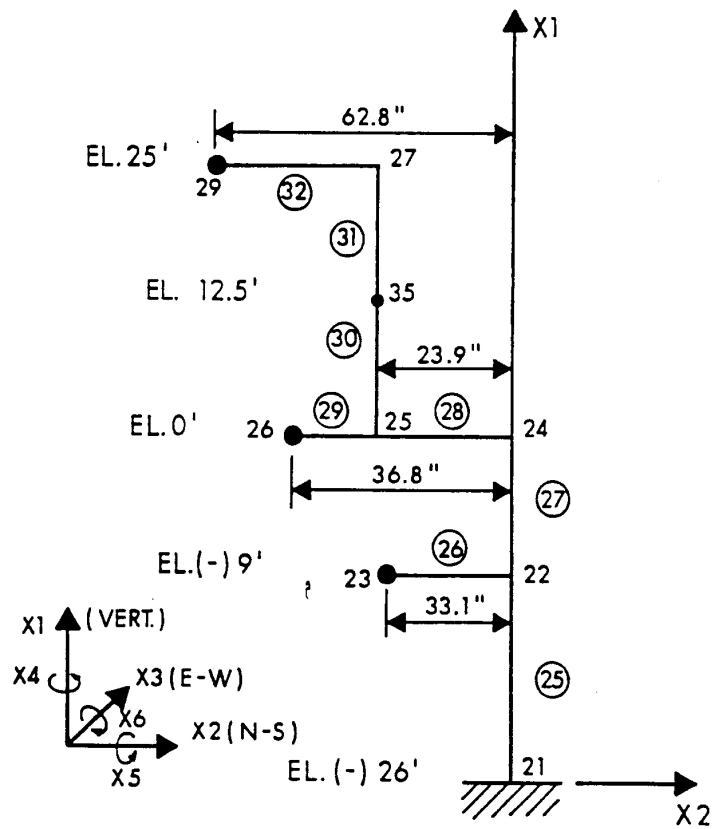
Figure 3.7(B)-19

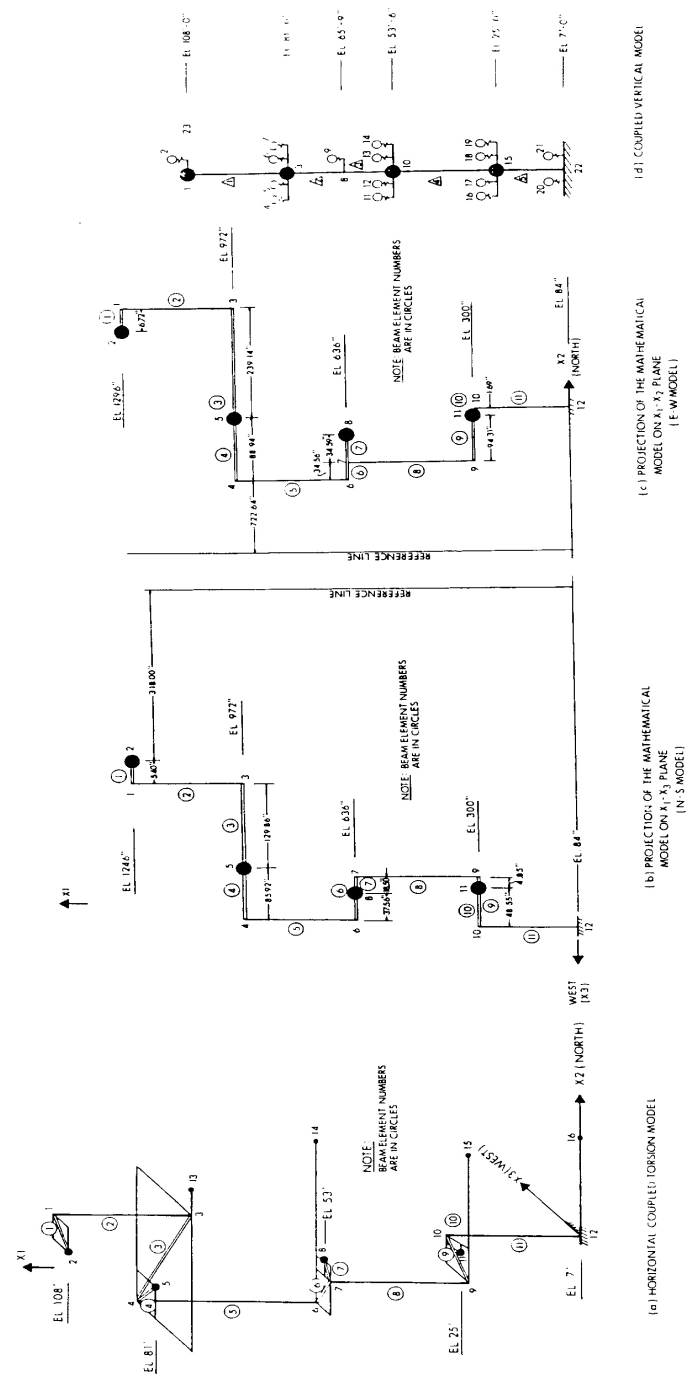


SEABROOK STATION UPDATED FINAL SAFETY ANALYSIS REPORT	10% Critical Damping Ground Response Spectrum, Vertical Component - SSE	
		Figure 3.7(B)-20

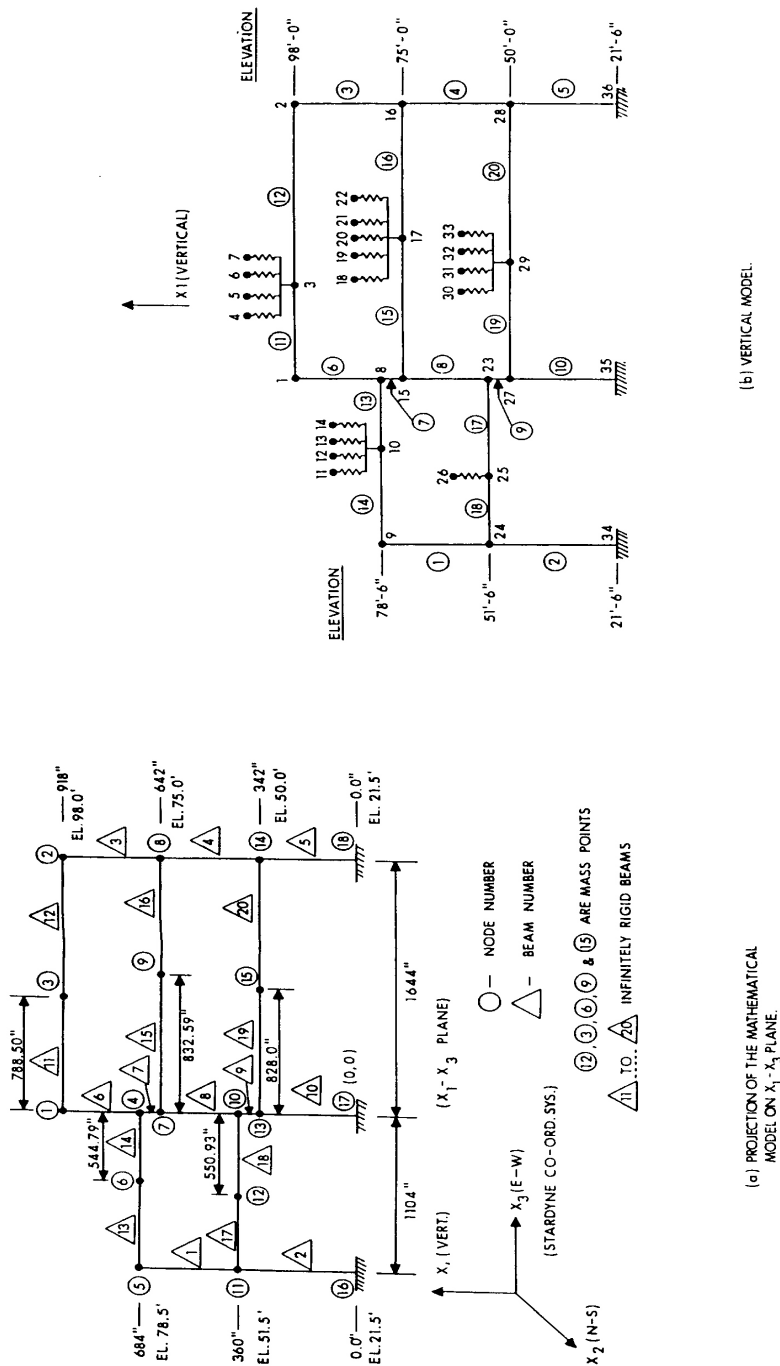


SEABROOK STATION UPDATED FINAL SAFETY ANALYSIS REPORT	Containment Shell - Seismic Model	
		Figure 3.7(B)-21

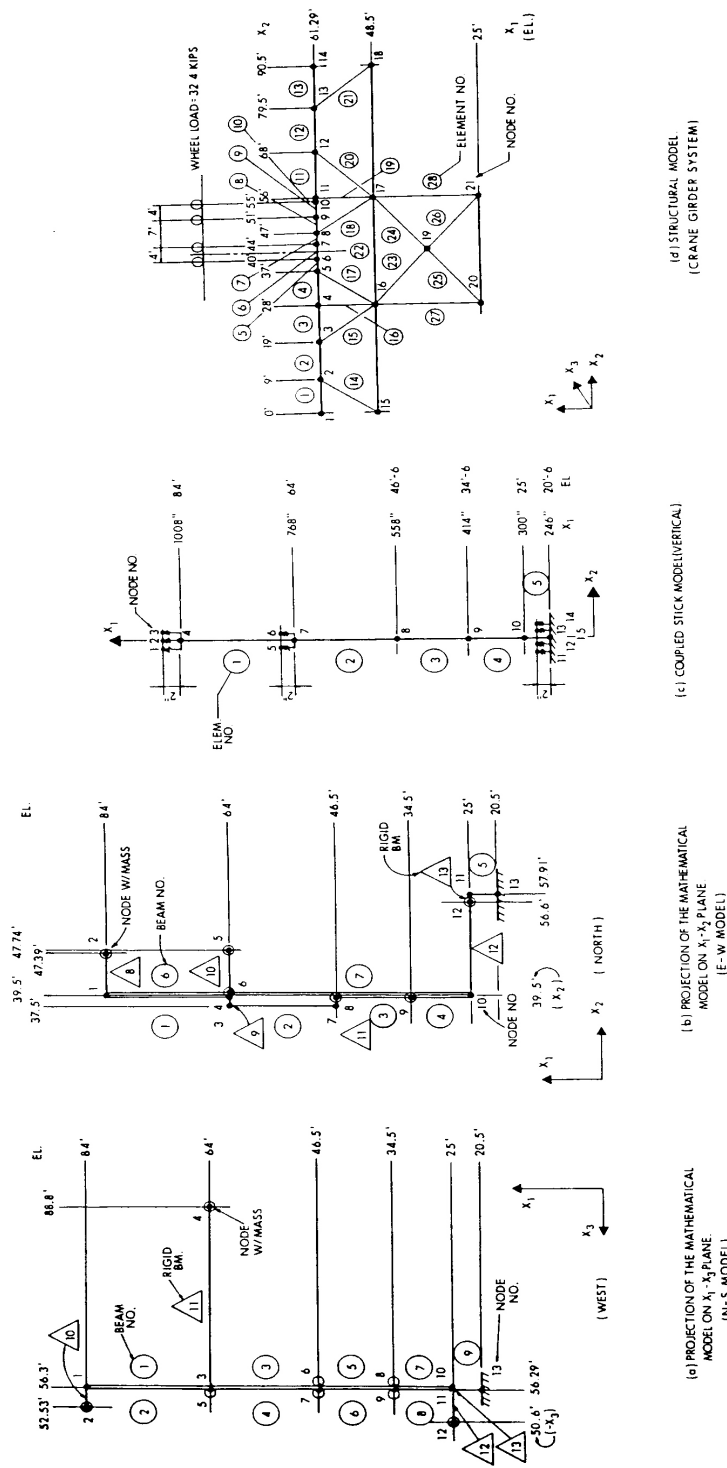


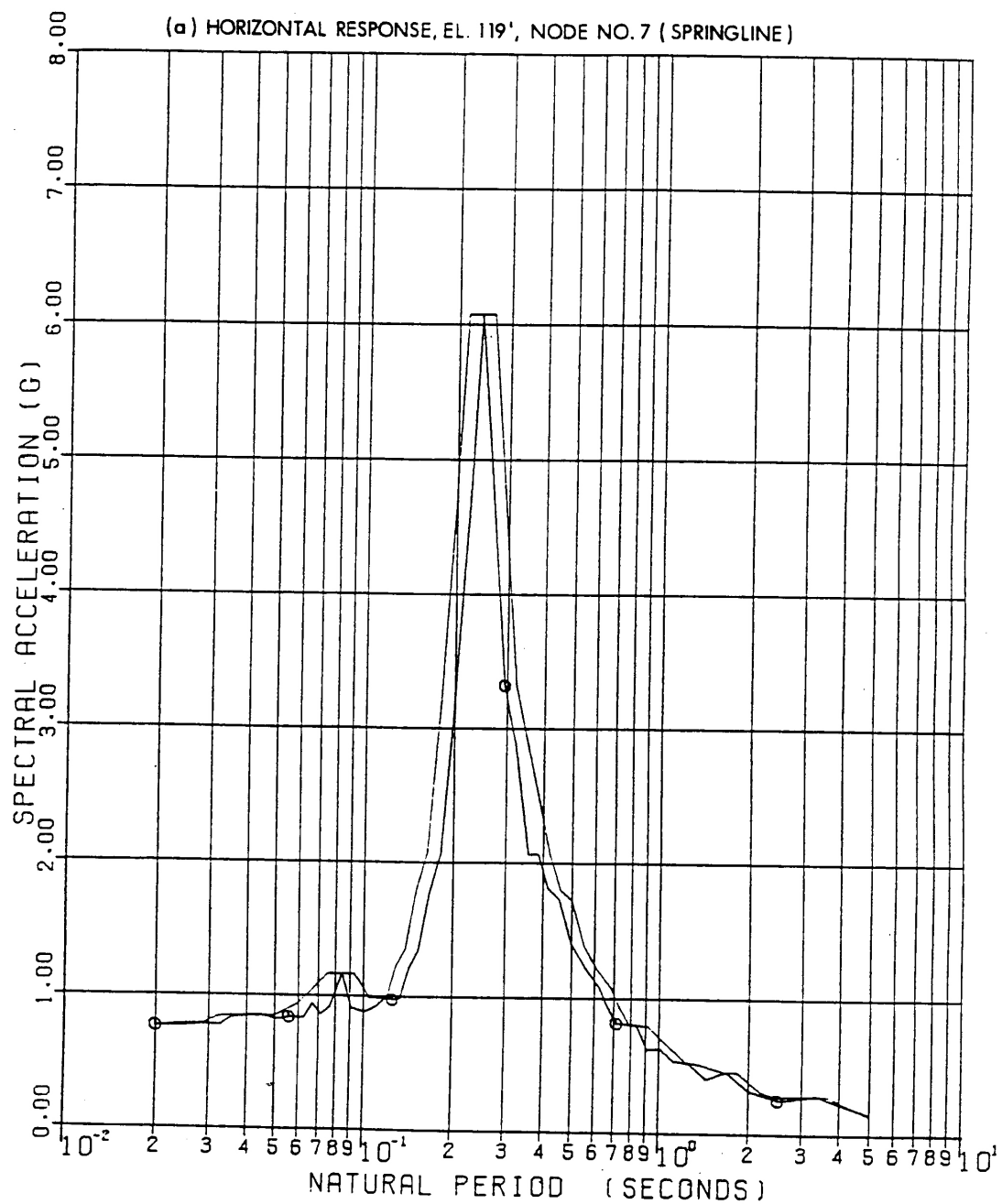


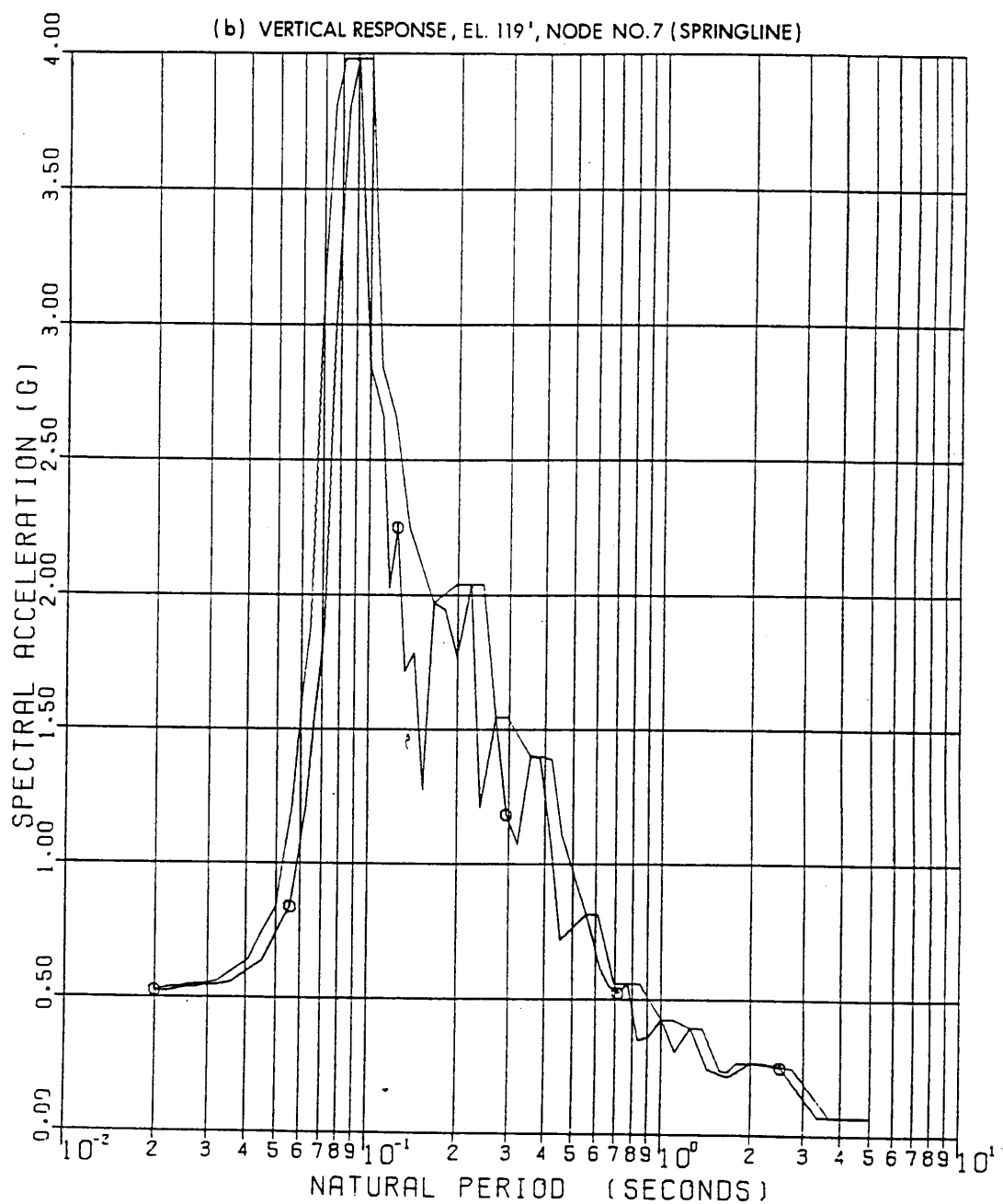
SEABROOK STATION UPDATED FINAL SAFETY ANALYSIS REPORT	Primary Auxiliary Building Seismic Analysis - Mathematical Model	
		Figure 3.7(B)-23

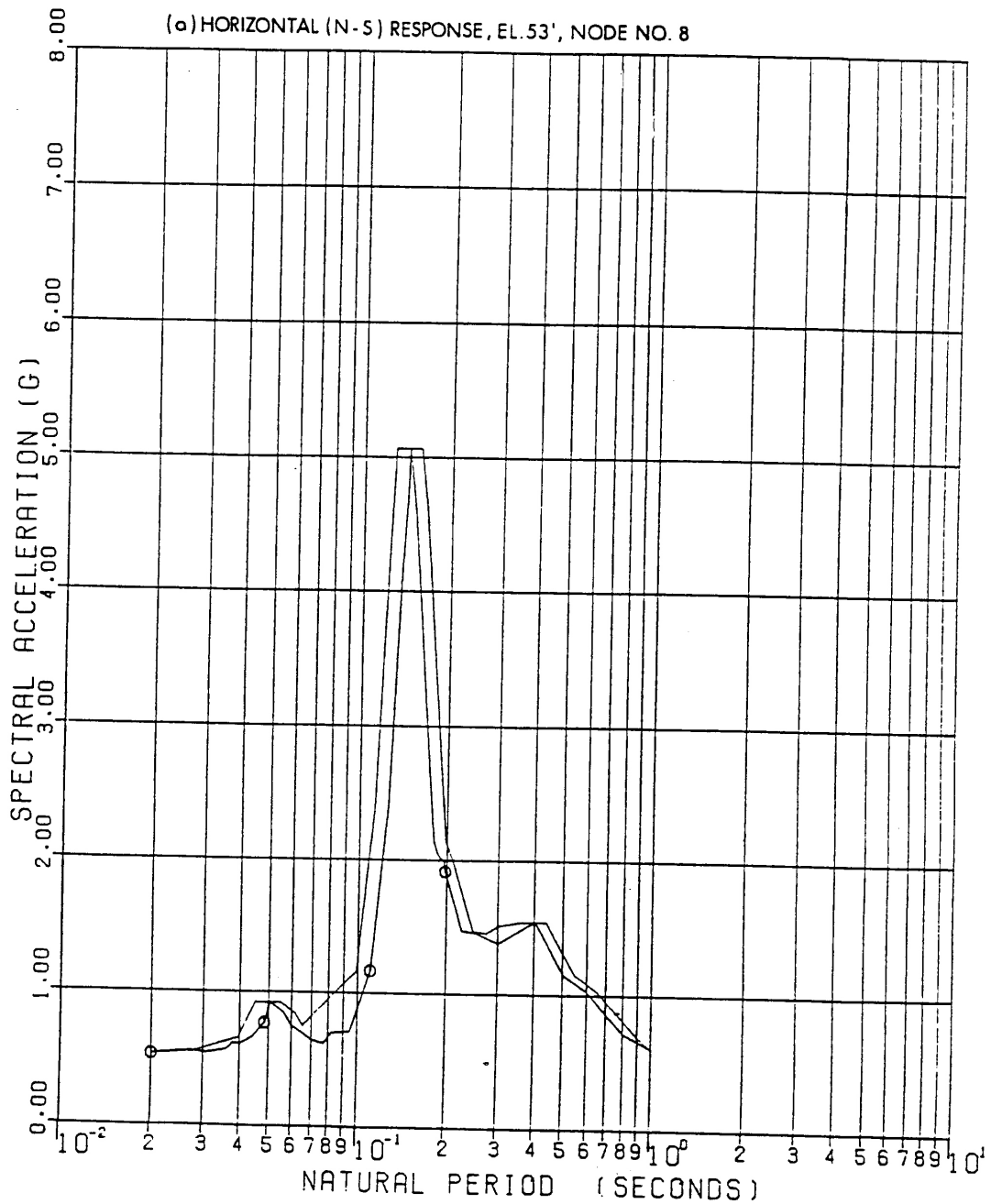


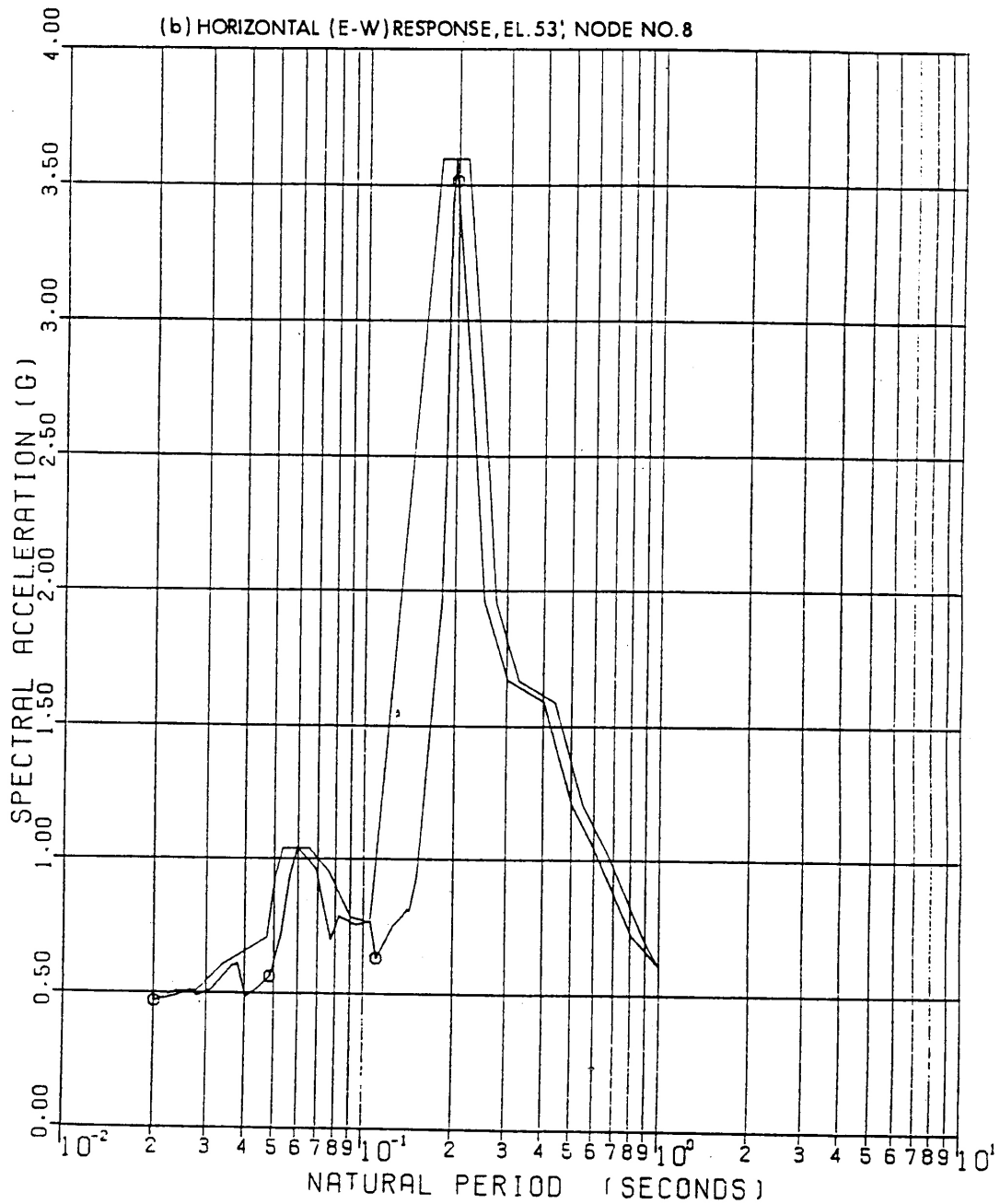
SEABROOK STATION UPDATED FINAL SAFETY ANALYSIS REPORT	Fuel Storage Building Seismic Analysis - Mathematical Model	
		Figure 3.7(B)-25

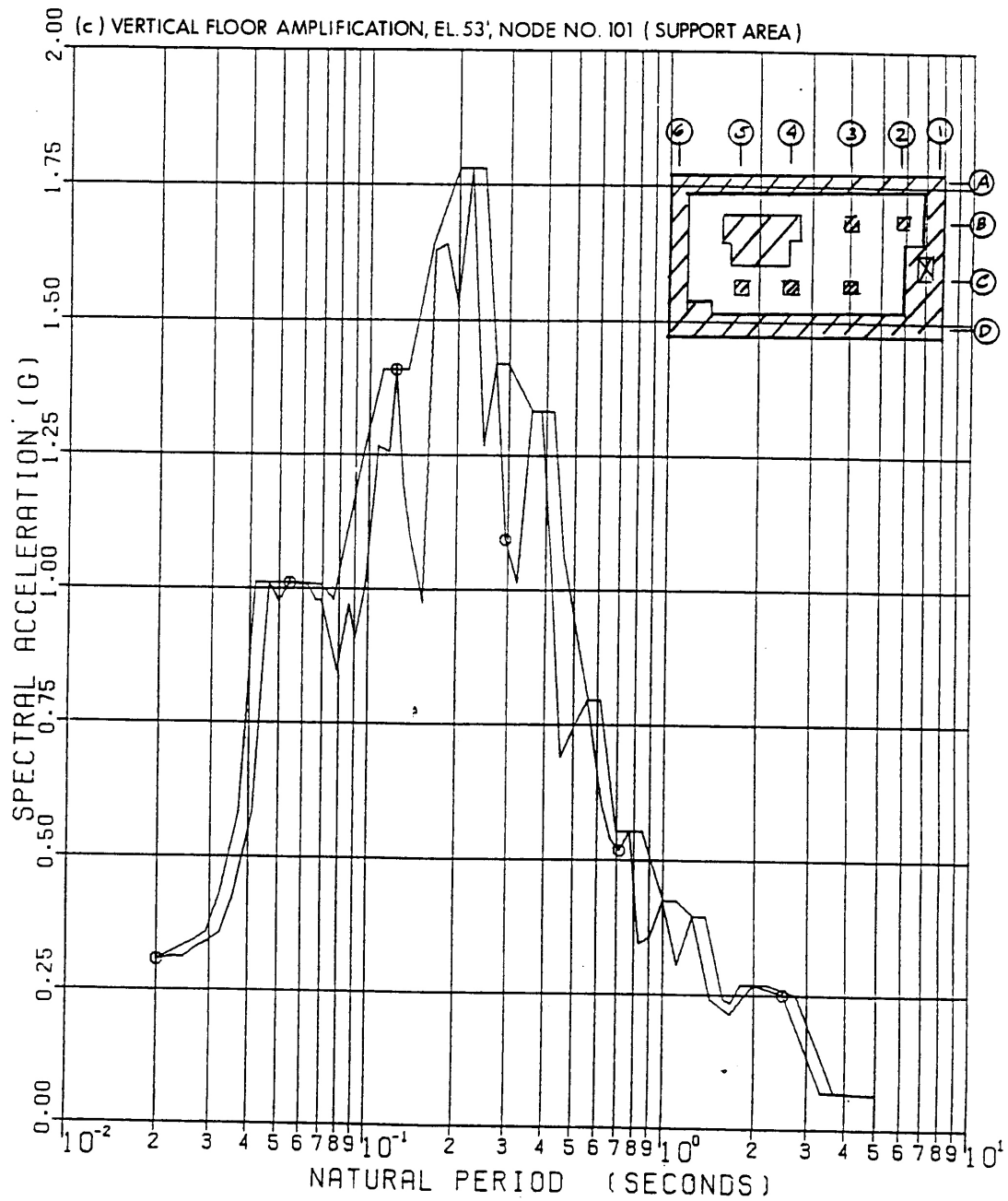


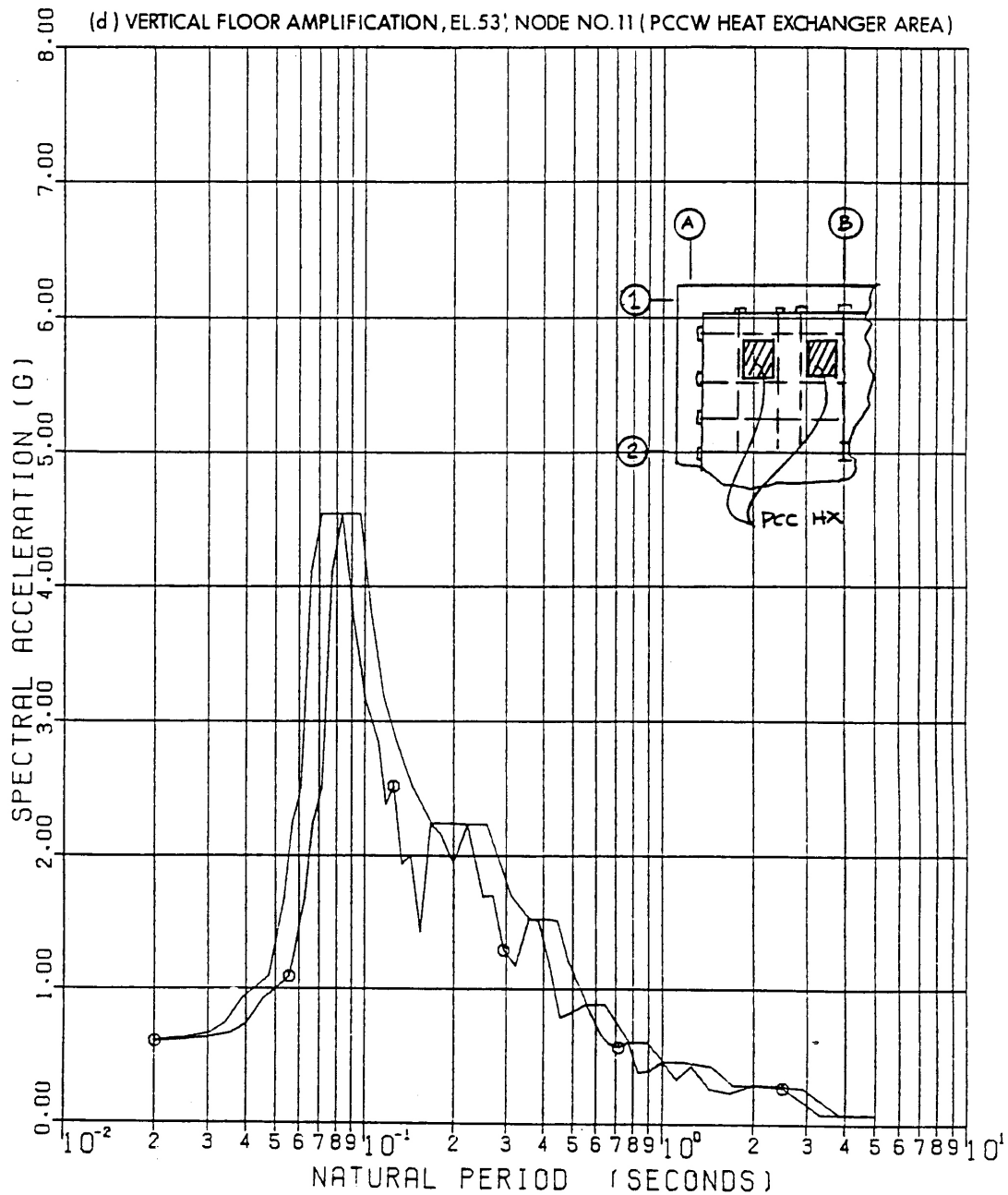


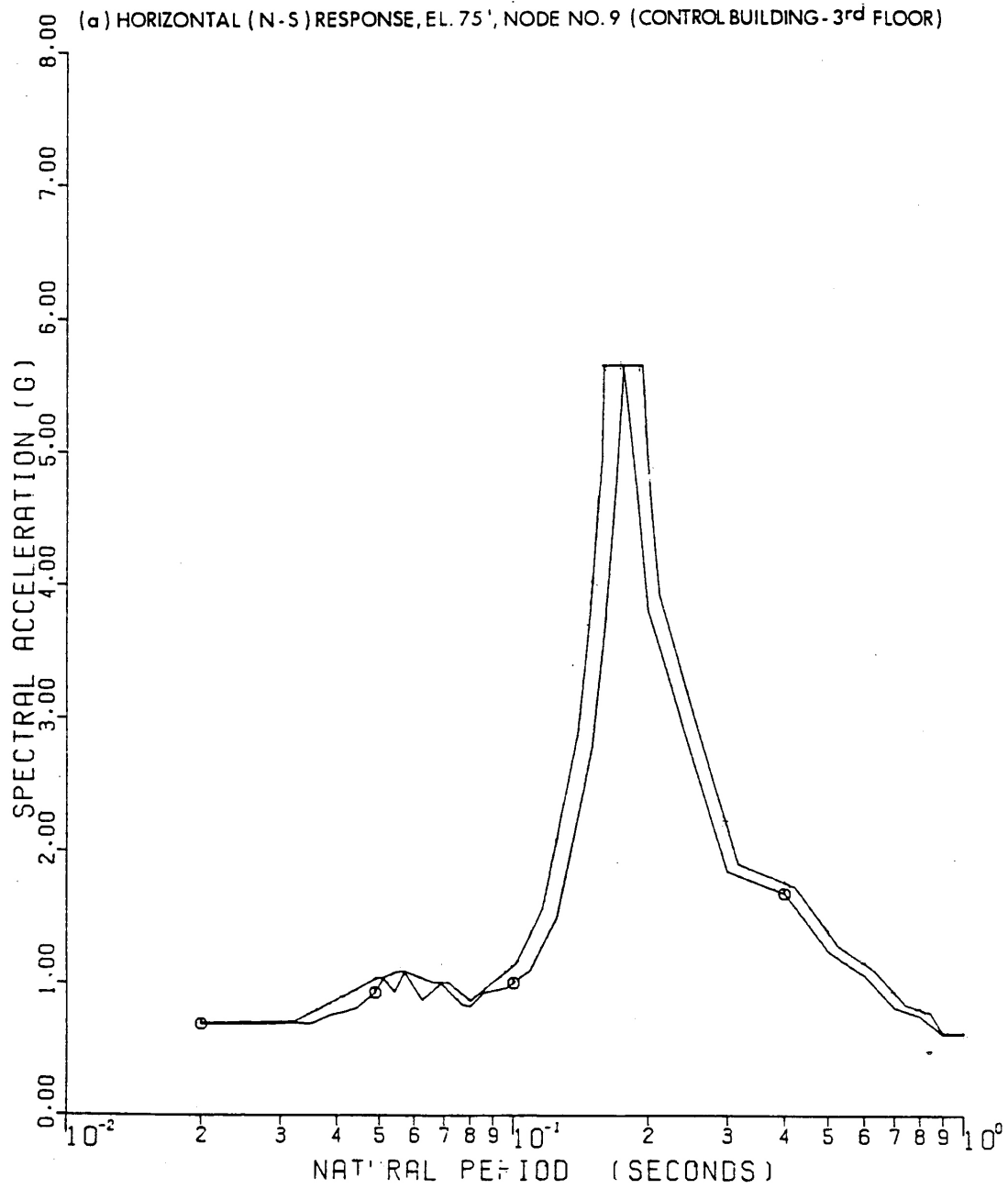


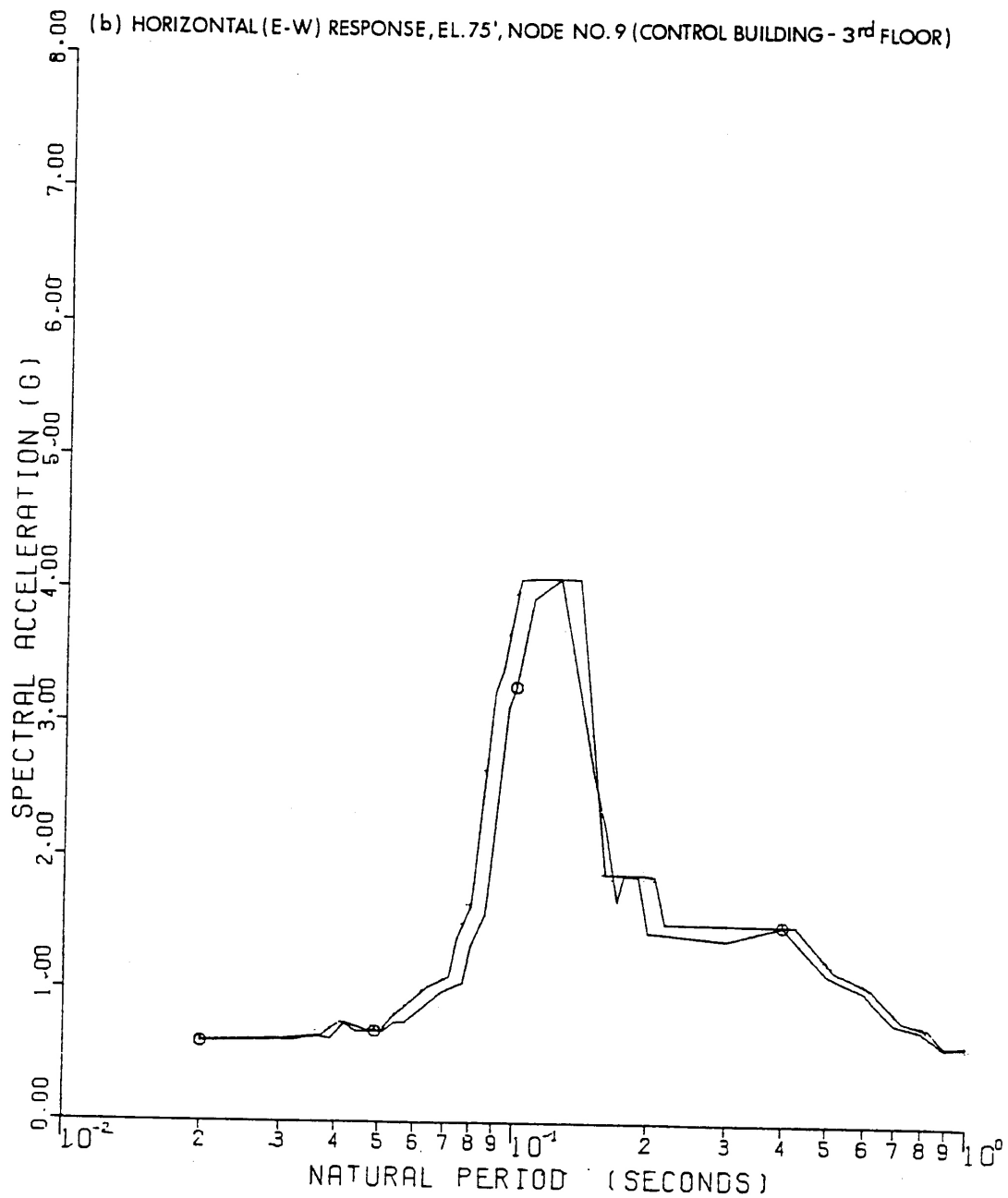


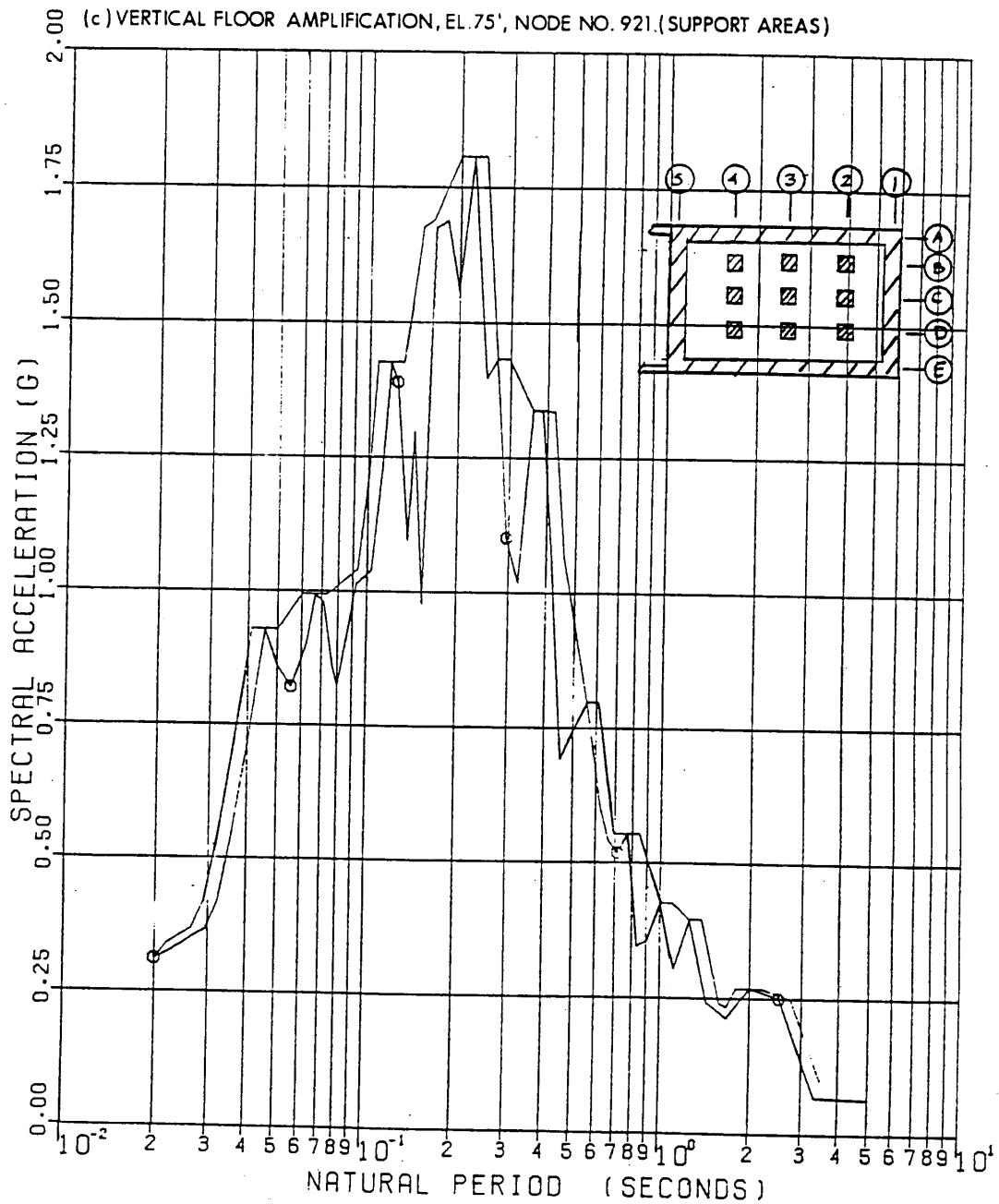


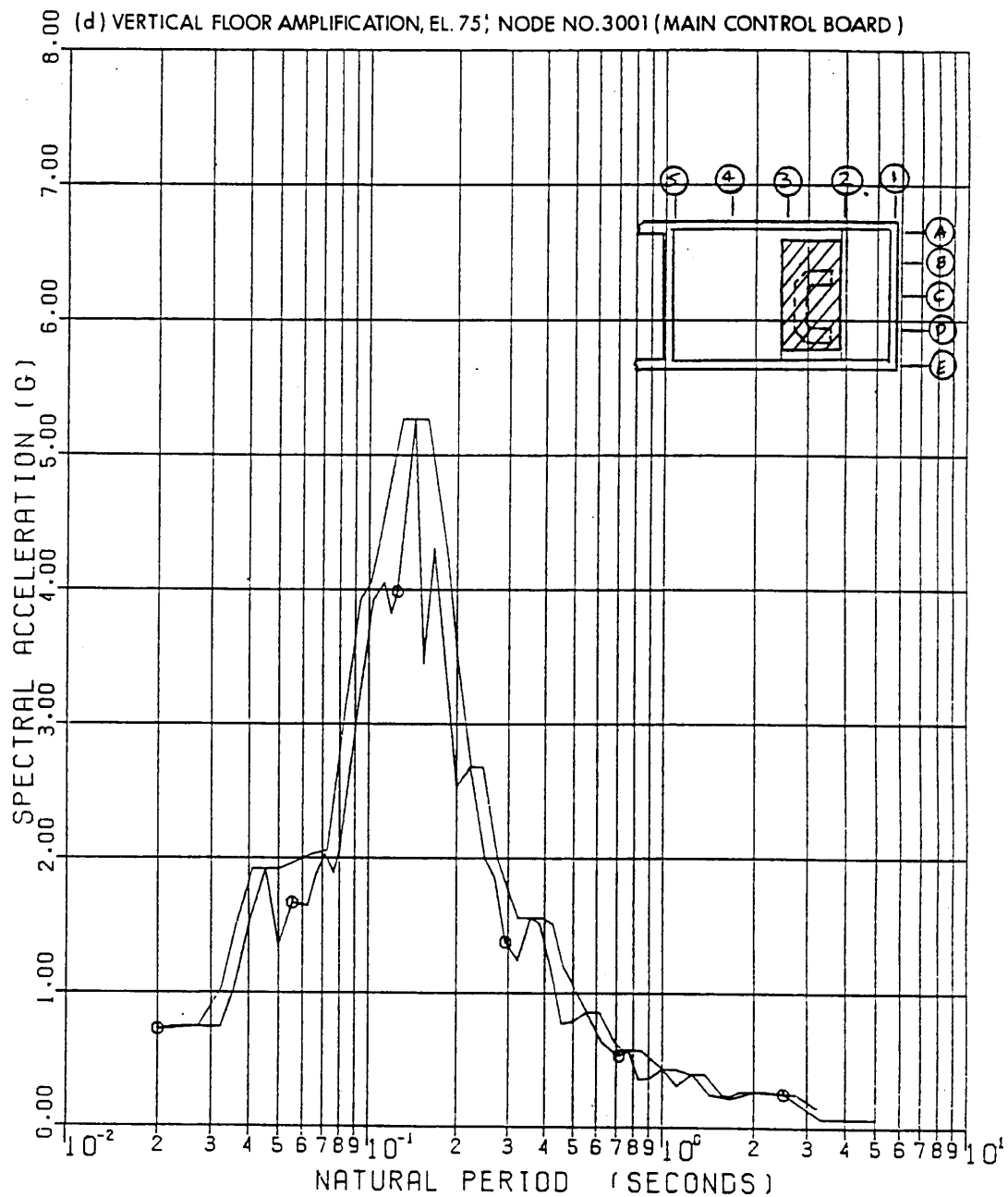


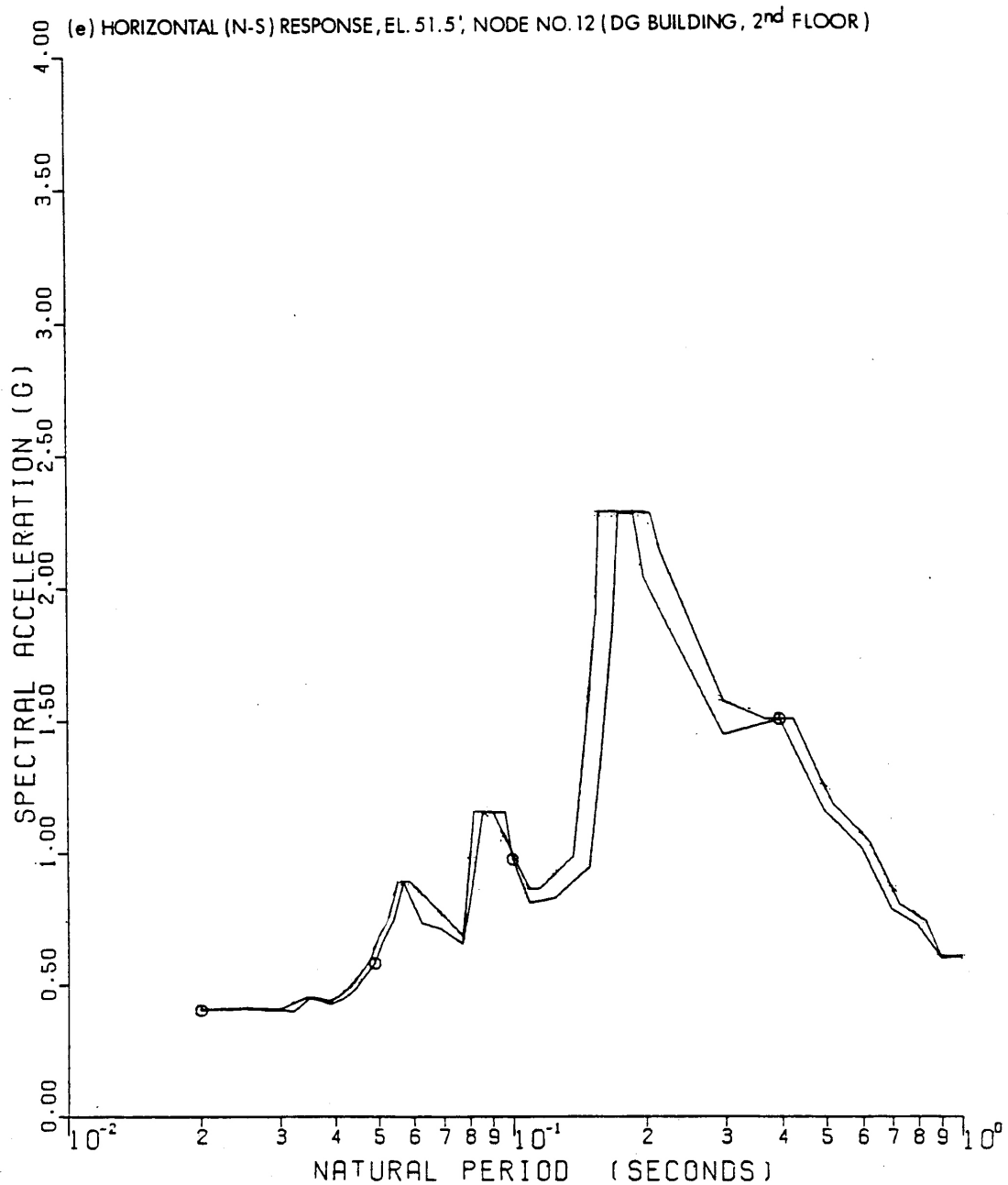




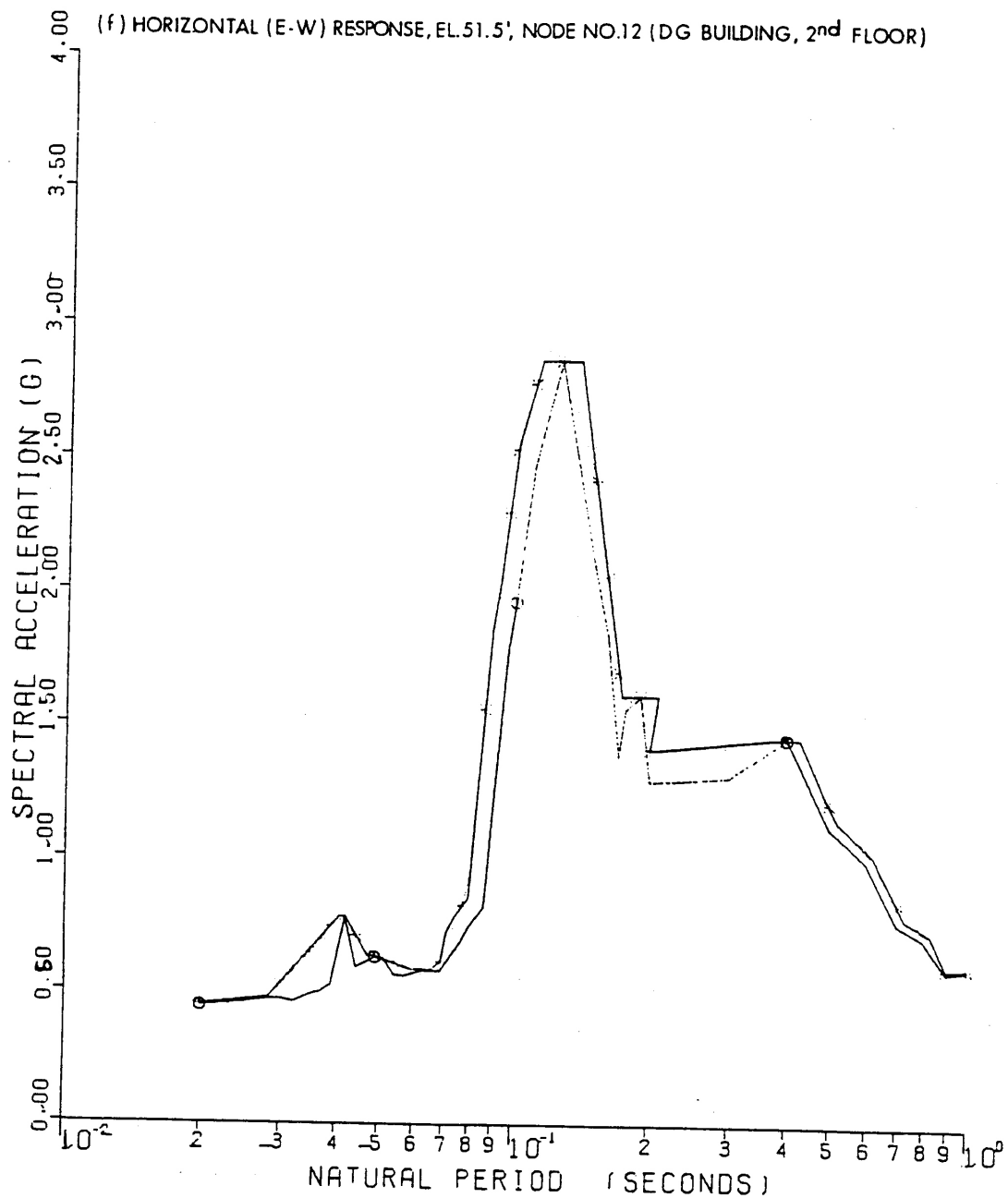


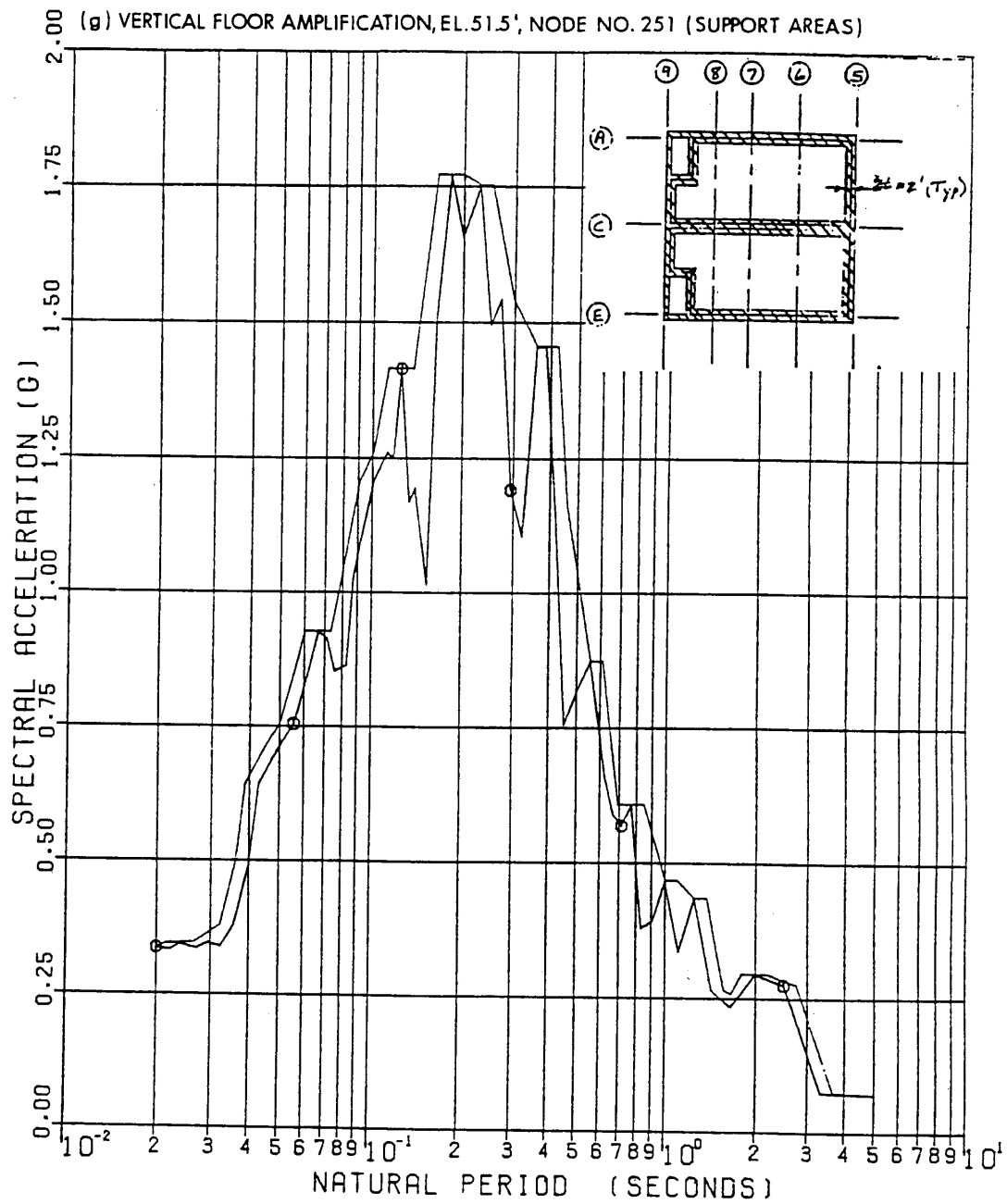


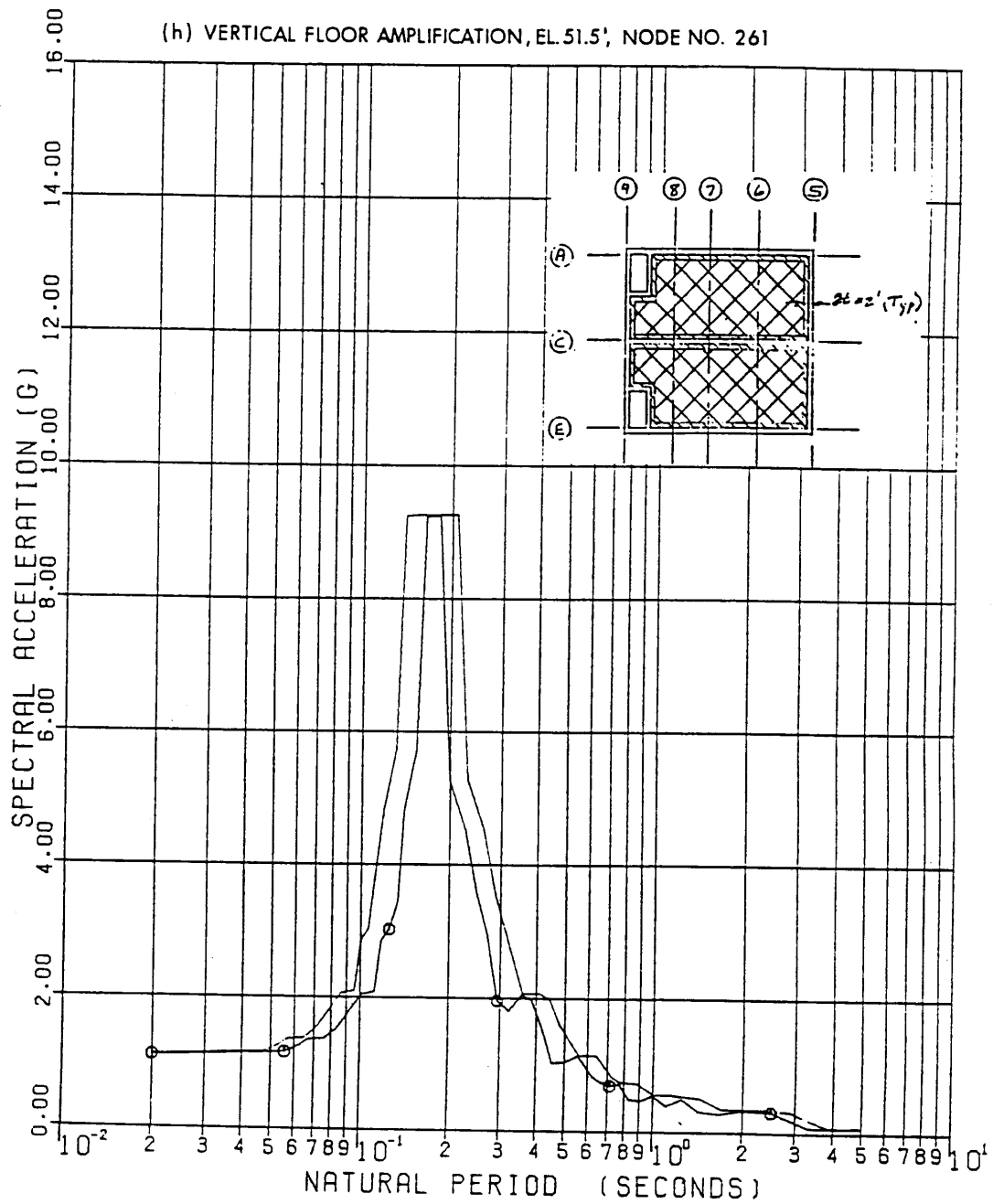


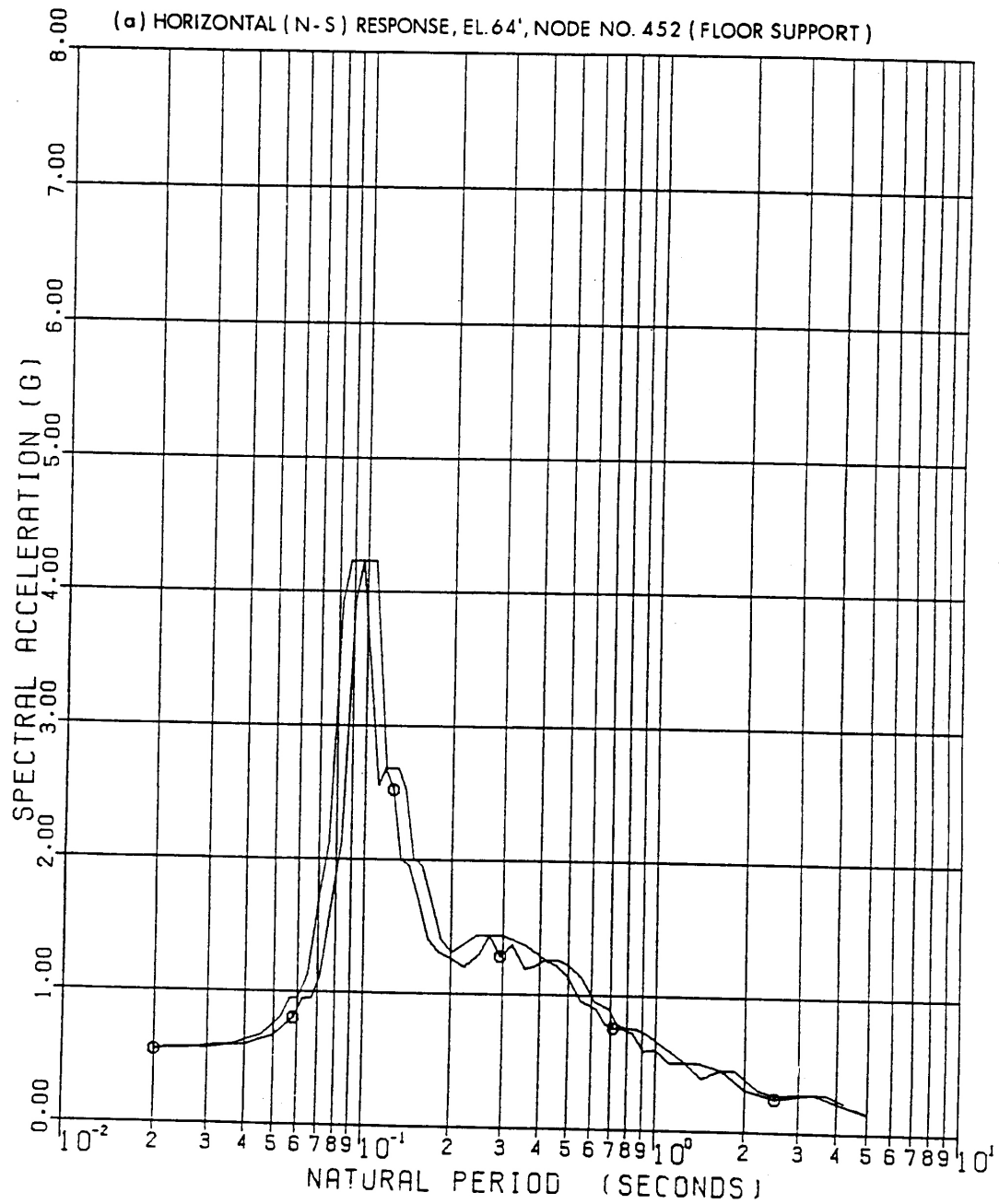


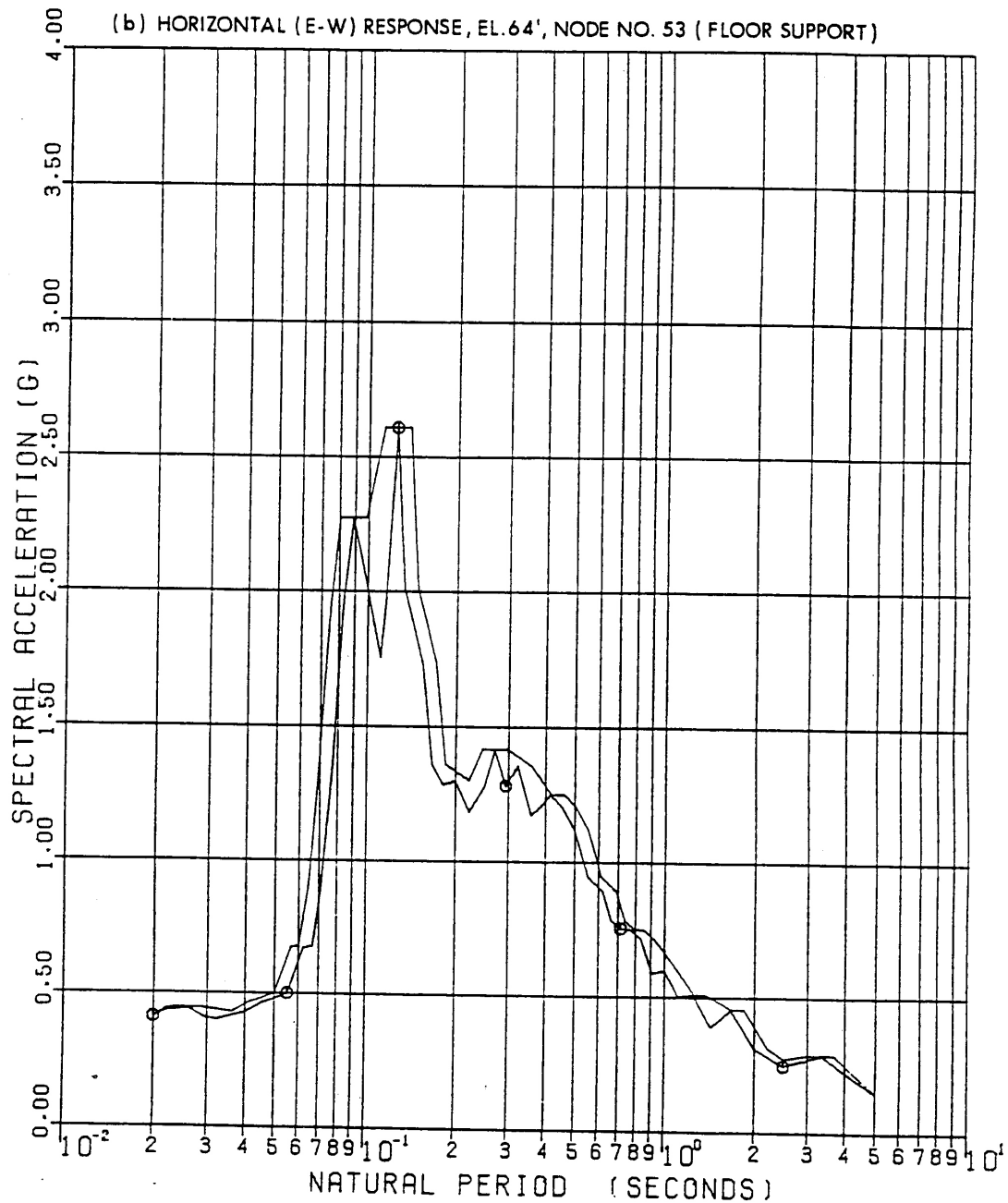
SEABROOK STATION UPDATED FINAL SAFETY ANALYSIS REPORT	Amplified Response Spectra - SSE - Control/Diesel Generator Building - 7% Structural Damping; 2% Equipment Damping [8 Sheets]	
	Figure 3.7(B)-28	Sh 5 of 8

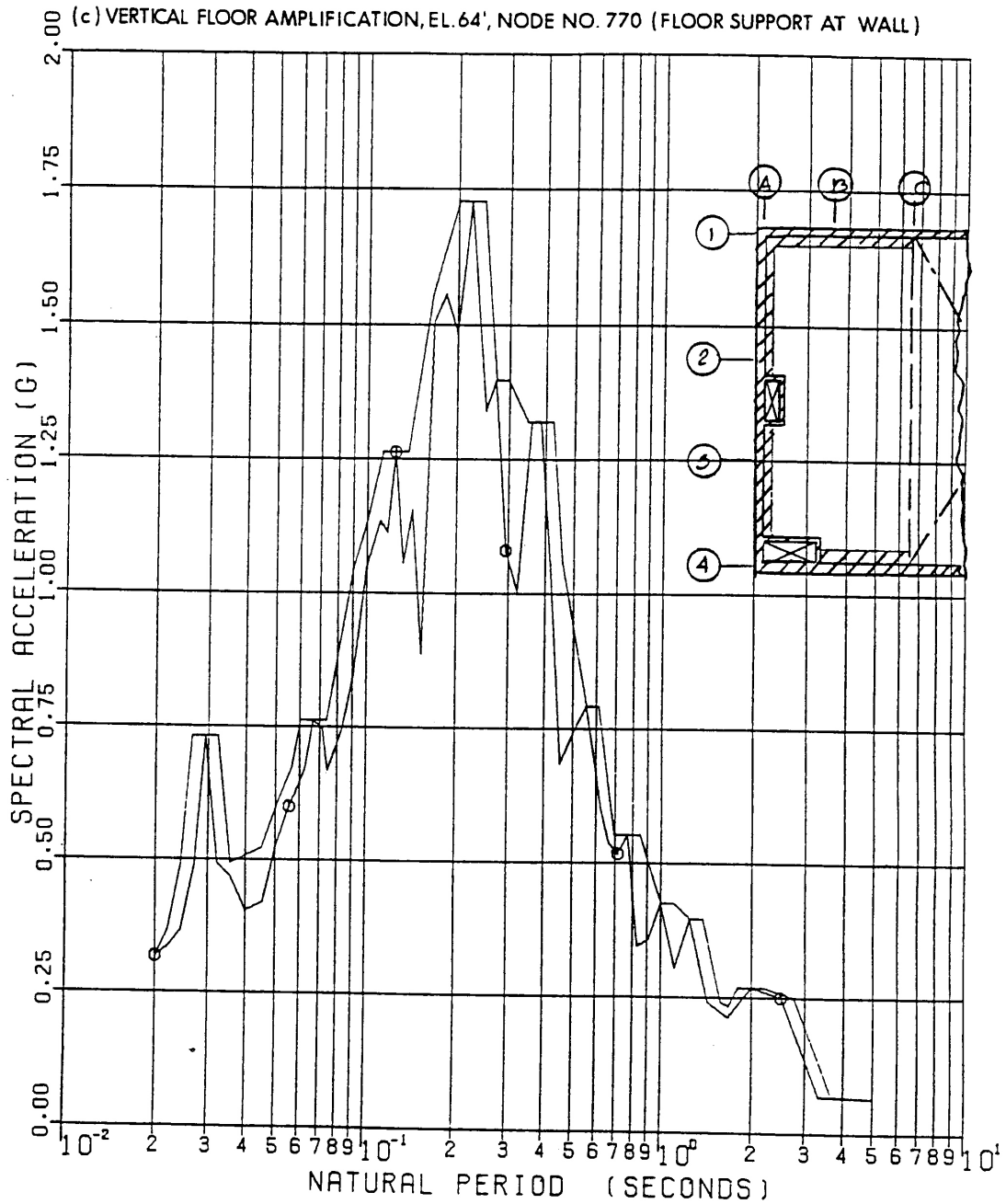


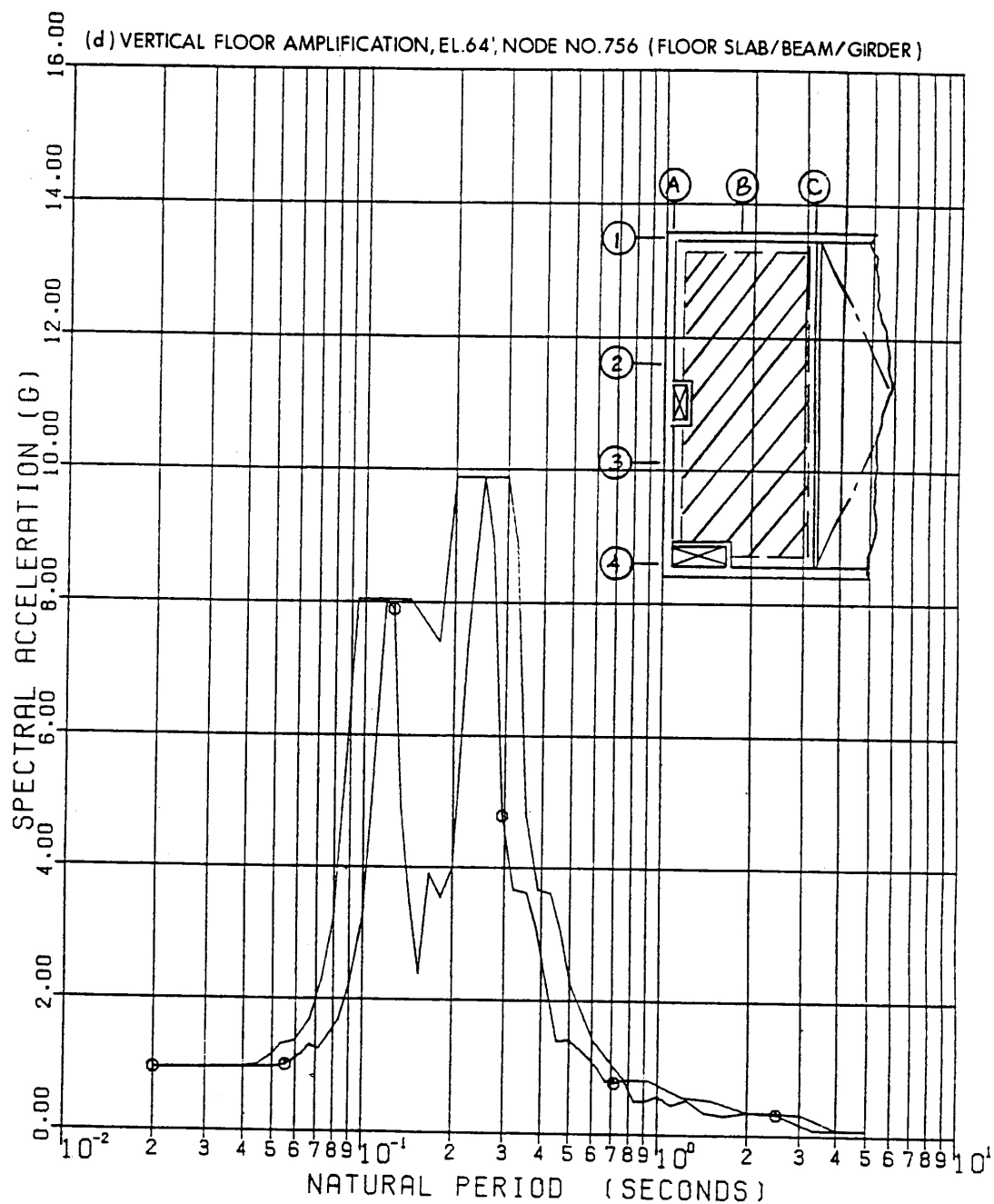


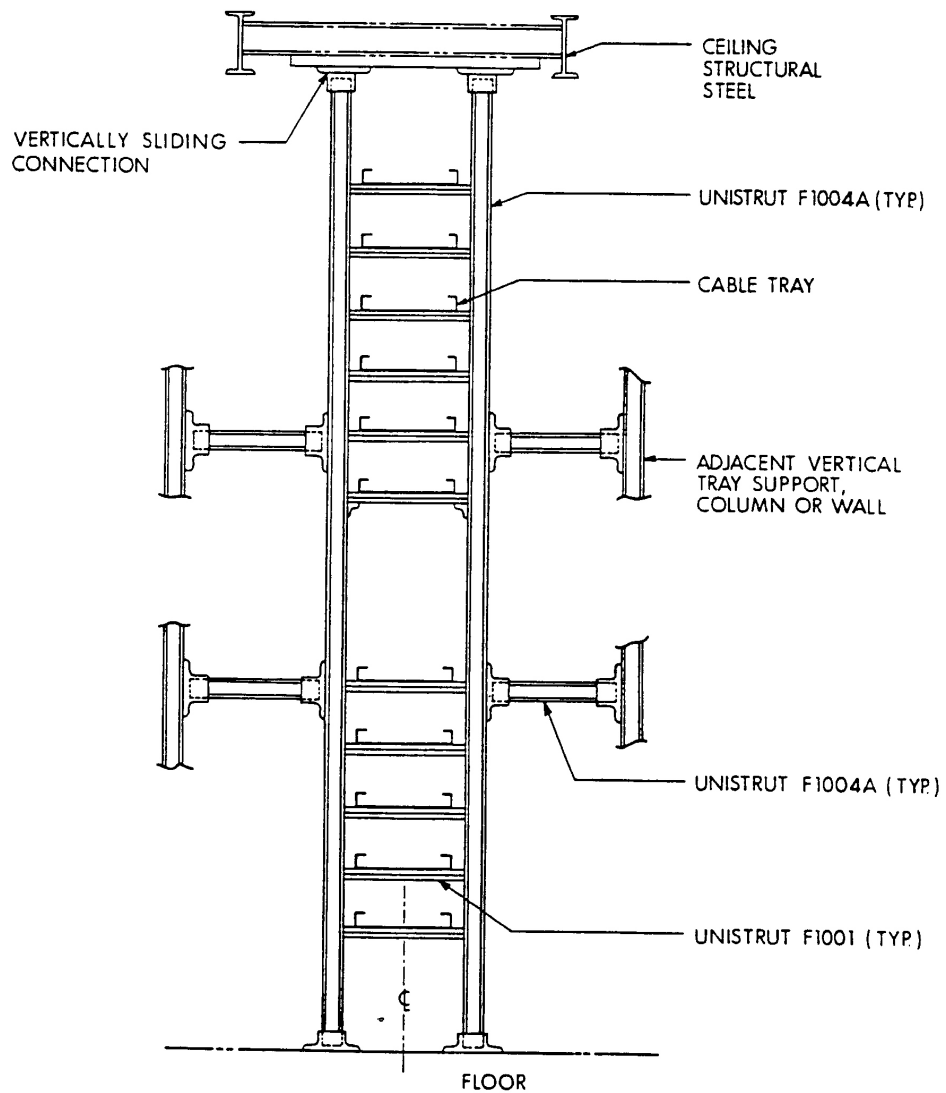


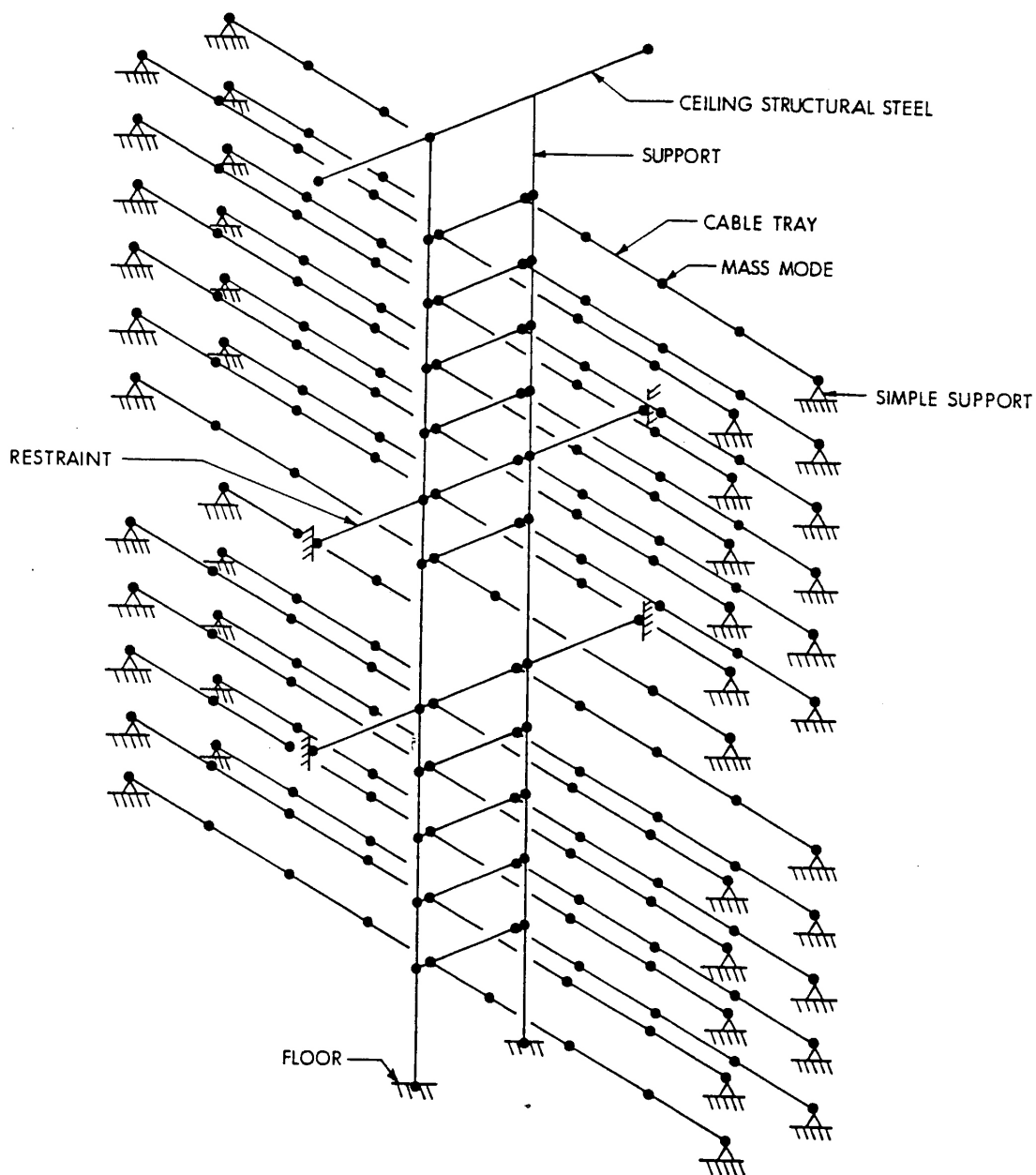


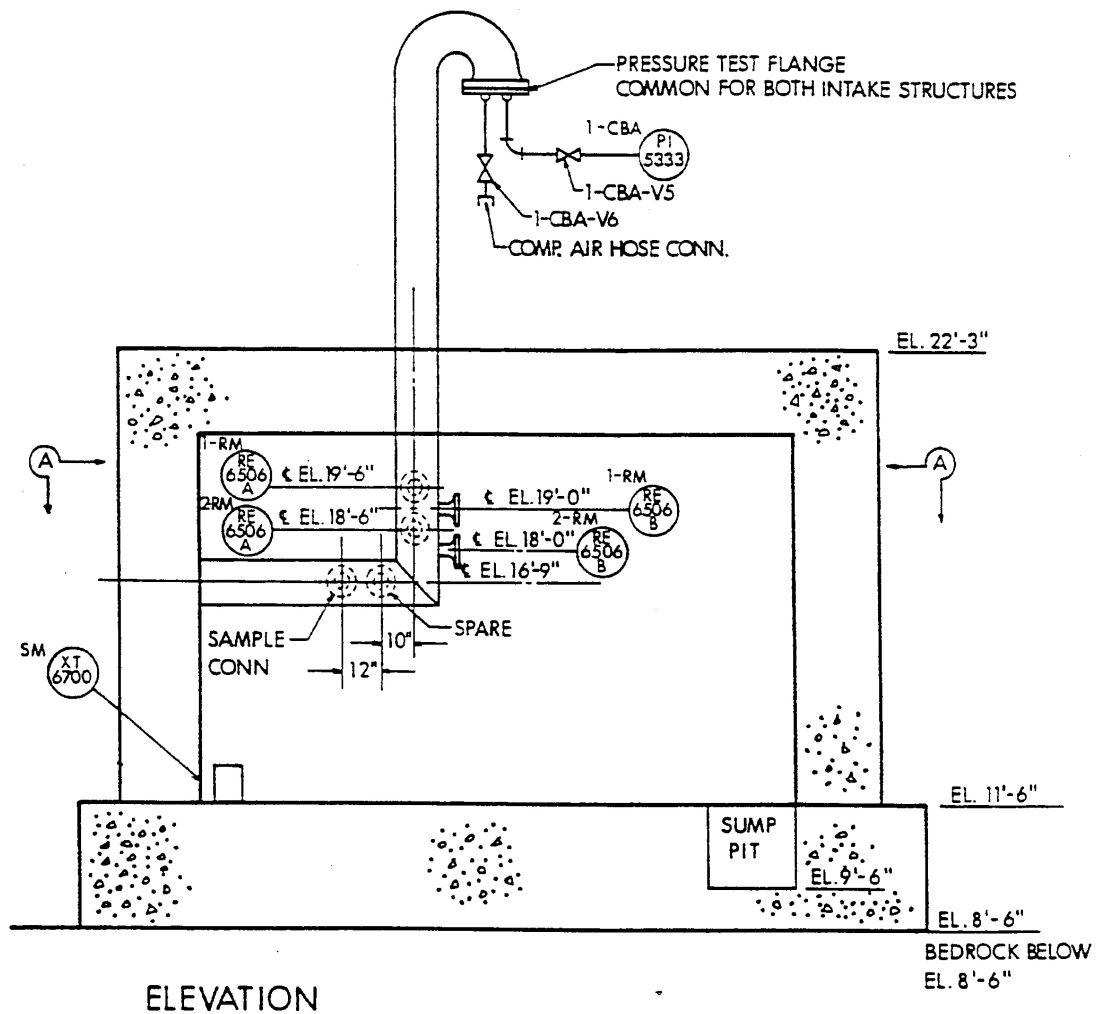






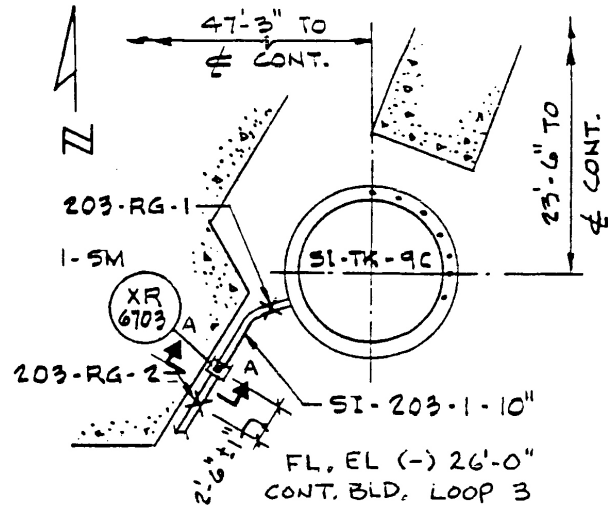






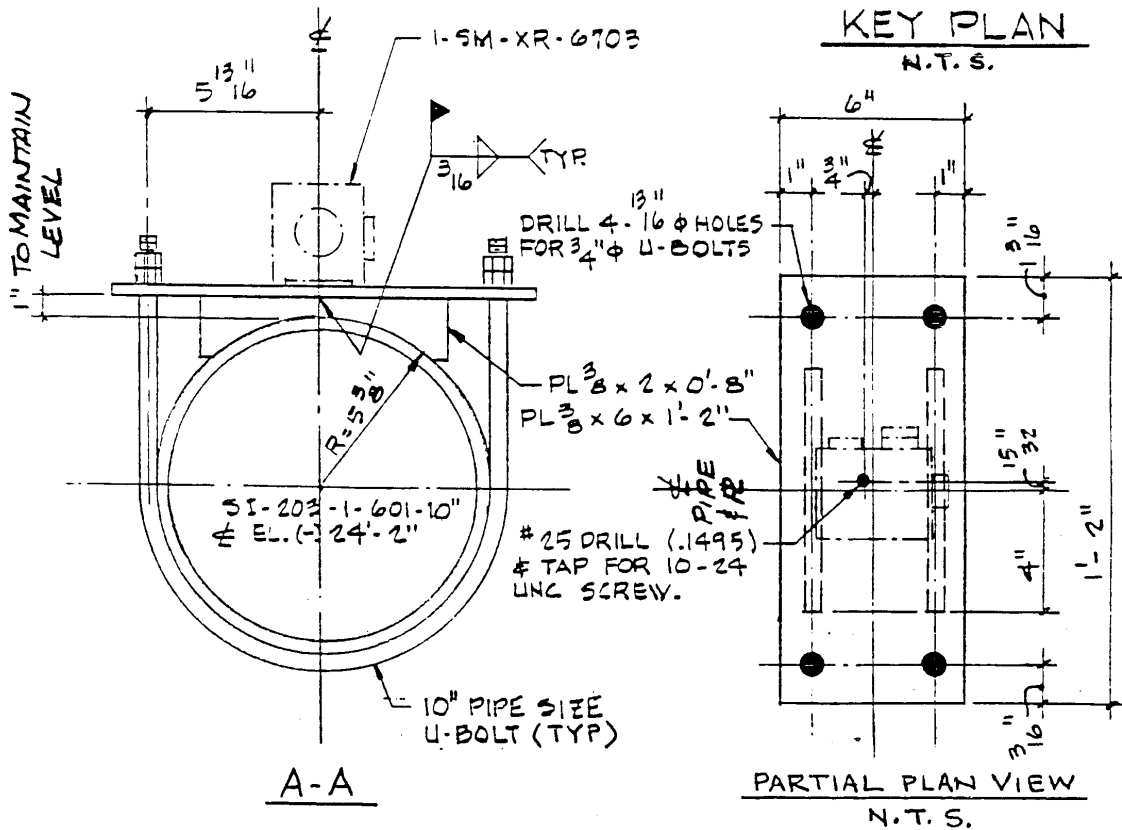
NOTES

1. TORQUE THE INST. MOUNTING SCREW TO 40 ± 10 IN-LBS
2. TORQUE U-BOLTS TO 80 FT-LBS ± 20
3. LEVEL MOUNTING PLATE WITHIN $1/4"$ ($1/64"$ IN $3/2"$).
4. EDGE OF MOUNTING PLATE TO BE PARALLEL WITH ϕ OF PIPE.
5. ALIGN LONG SIDE OF INSTRUMENT PARALLEL WITH THE EDGE OF MOUNTING PLATE WITHIN $3"$ ($1/4"$ IN $5"$).



KEY PLAN

N.T.S.

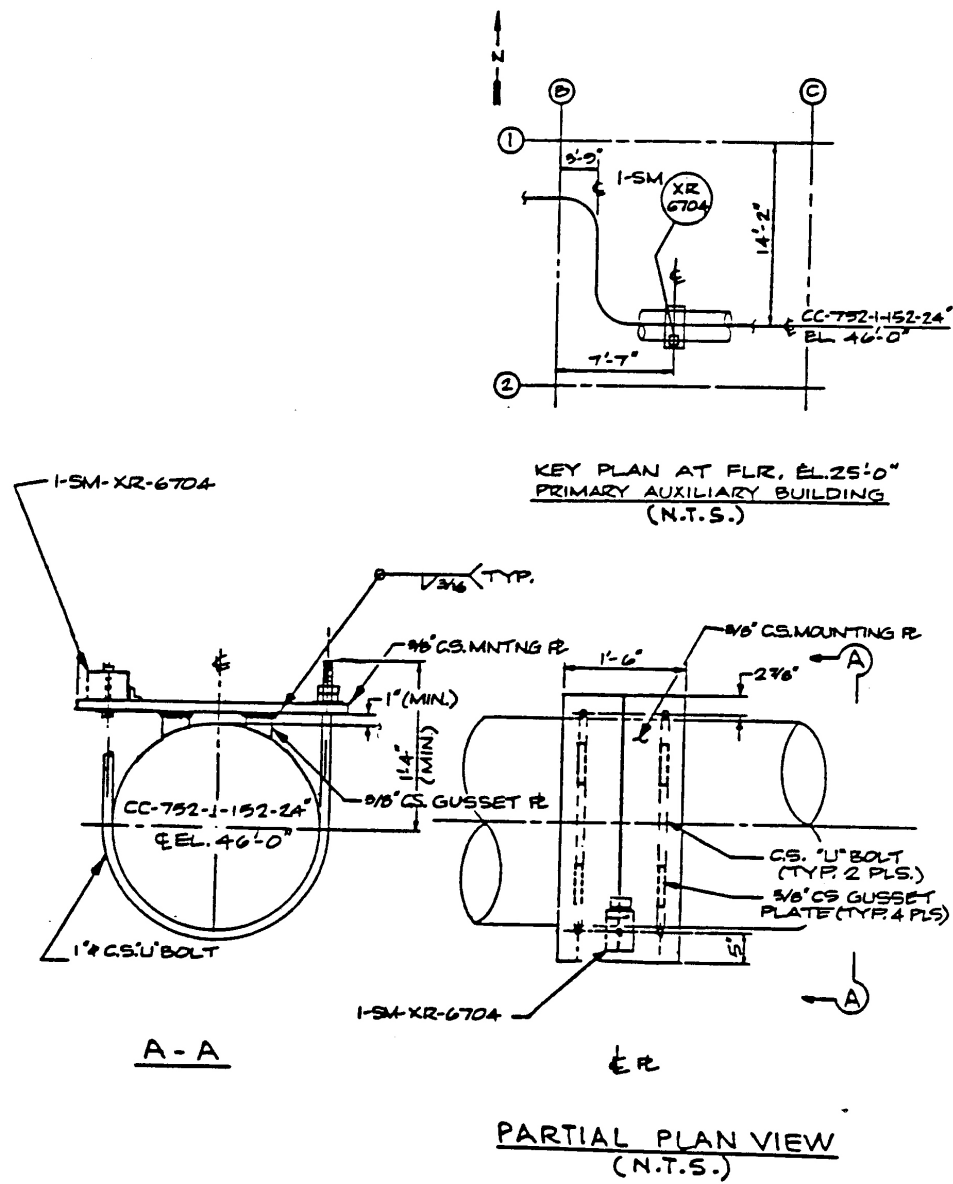


MOUNTING DETAIL

SEABROOK STATION
UPDATED FINAL SAFETY
ANALYSIS REPORT

Mounting Detail of Triaxial Peak Accelerograph, XR-6703,
on Safety Injection Piping (Line 203)

Figure 3.7(B)-33

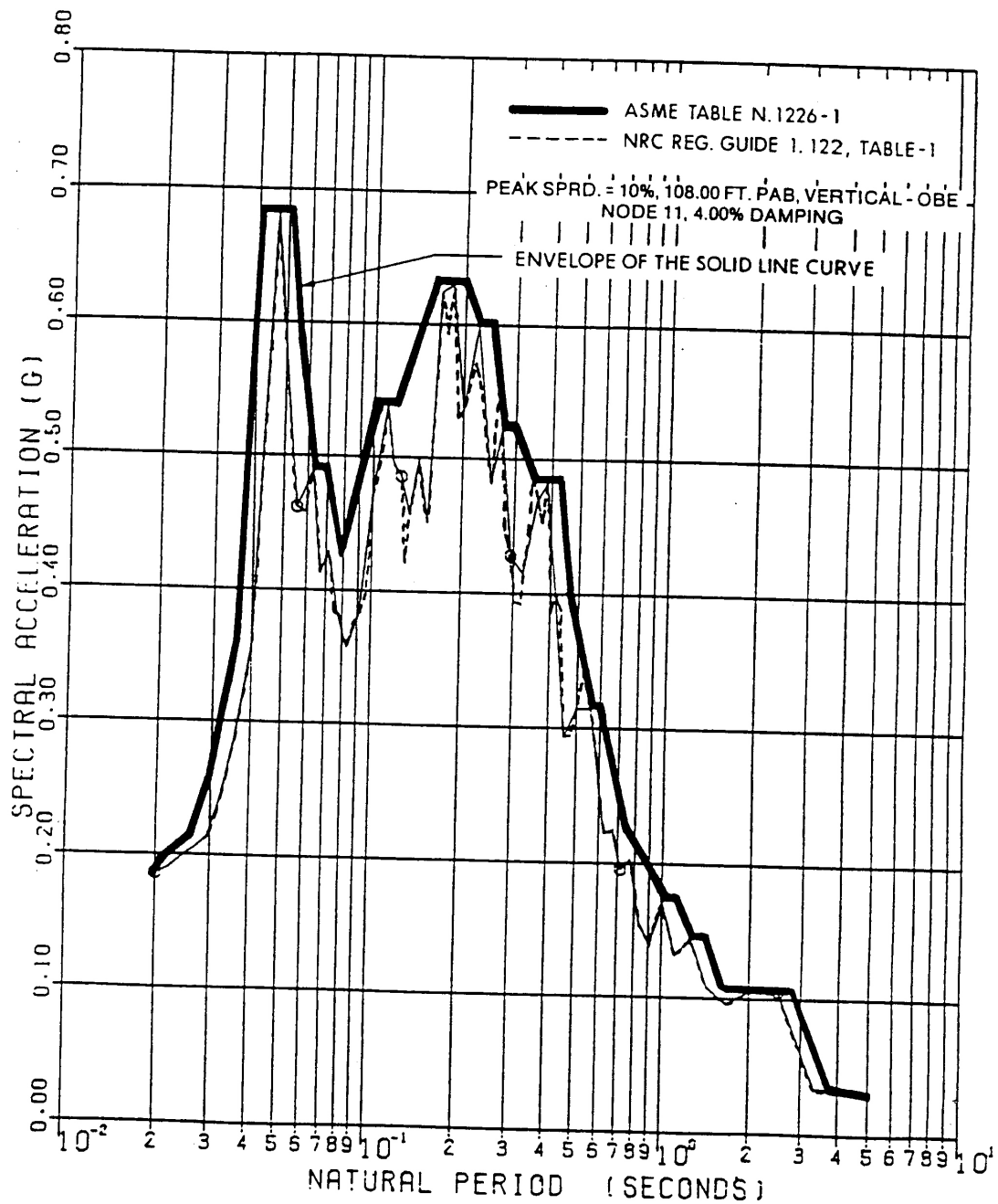


MOUNTING DETAIL

SEABROOK STATION
UPDATED FINAL SAFETY
ANALYSIS REPORT

Mounting Detail of Triaxial Peak Accelerograph, XR-6704,
on PCCW Piping

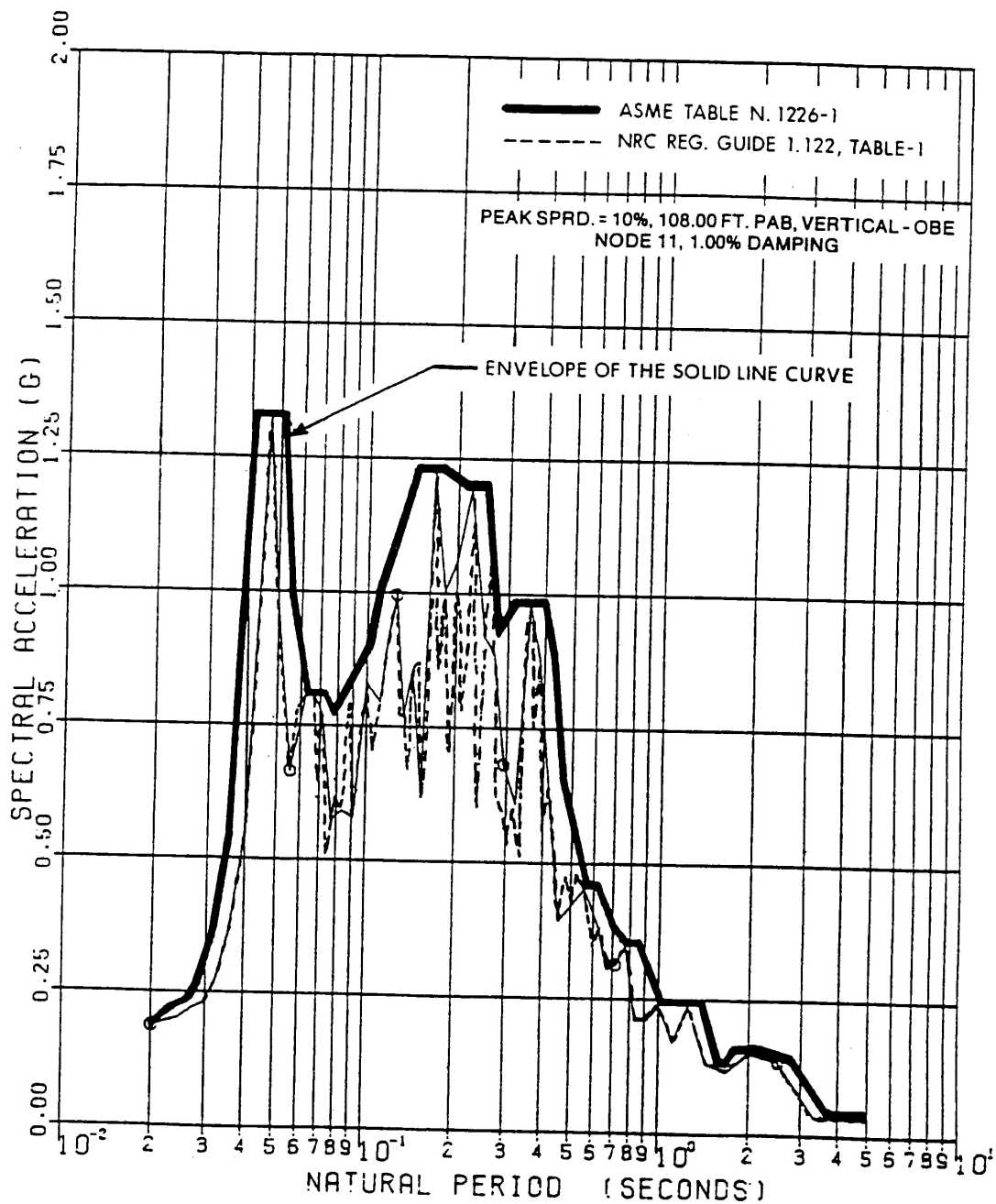
Figure 3.7(B)-34



SEABROOK STATION
 UPDATED FINAL SAFETY
 ANALYSIS REPORT

Primary Auxiliary Building Amplified Response Spectra
 (Vertical) OBE, 4% Damping

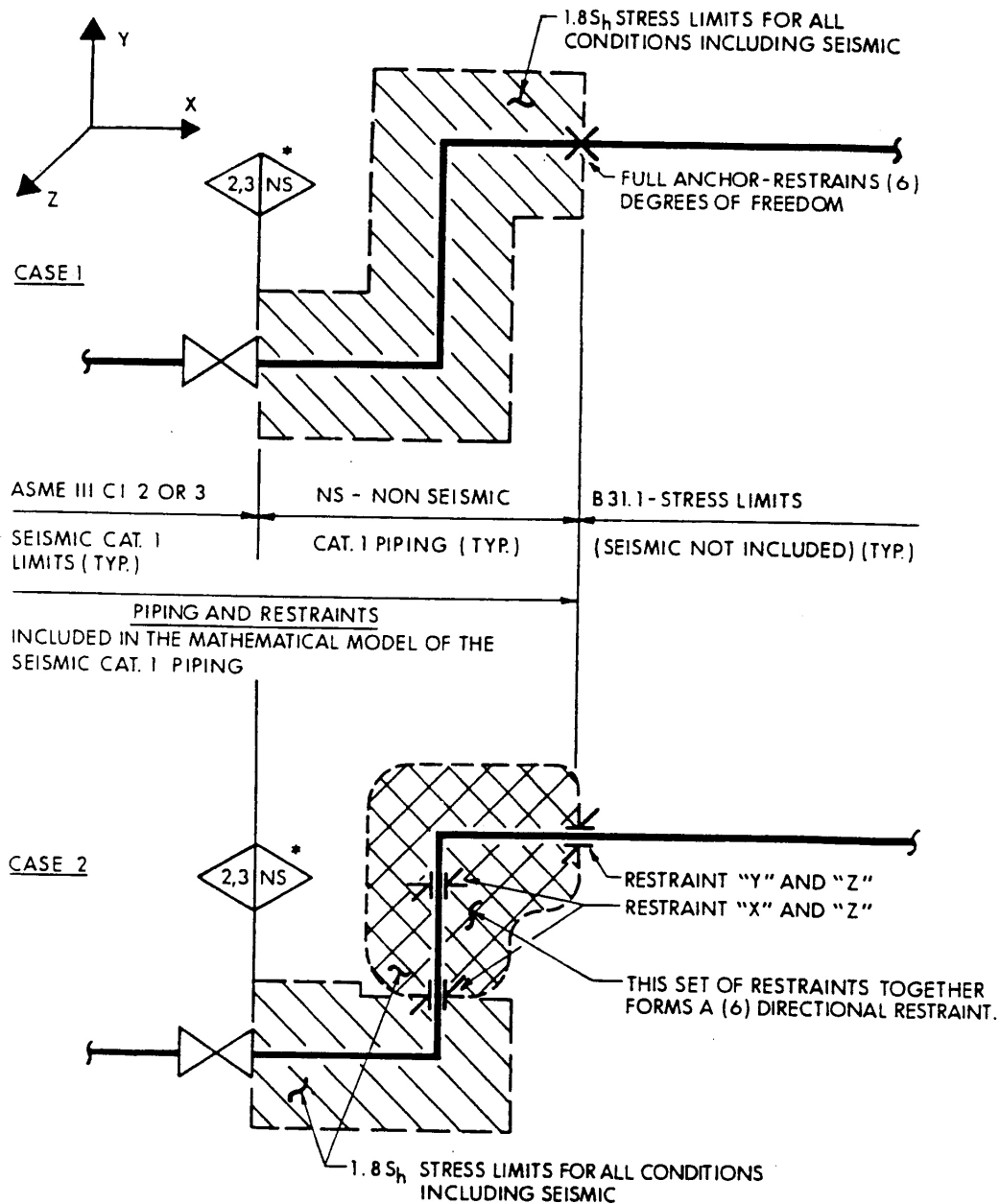
Figure 3.7(B)-35

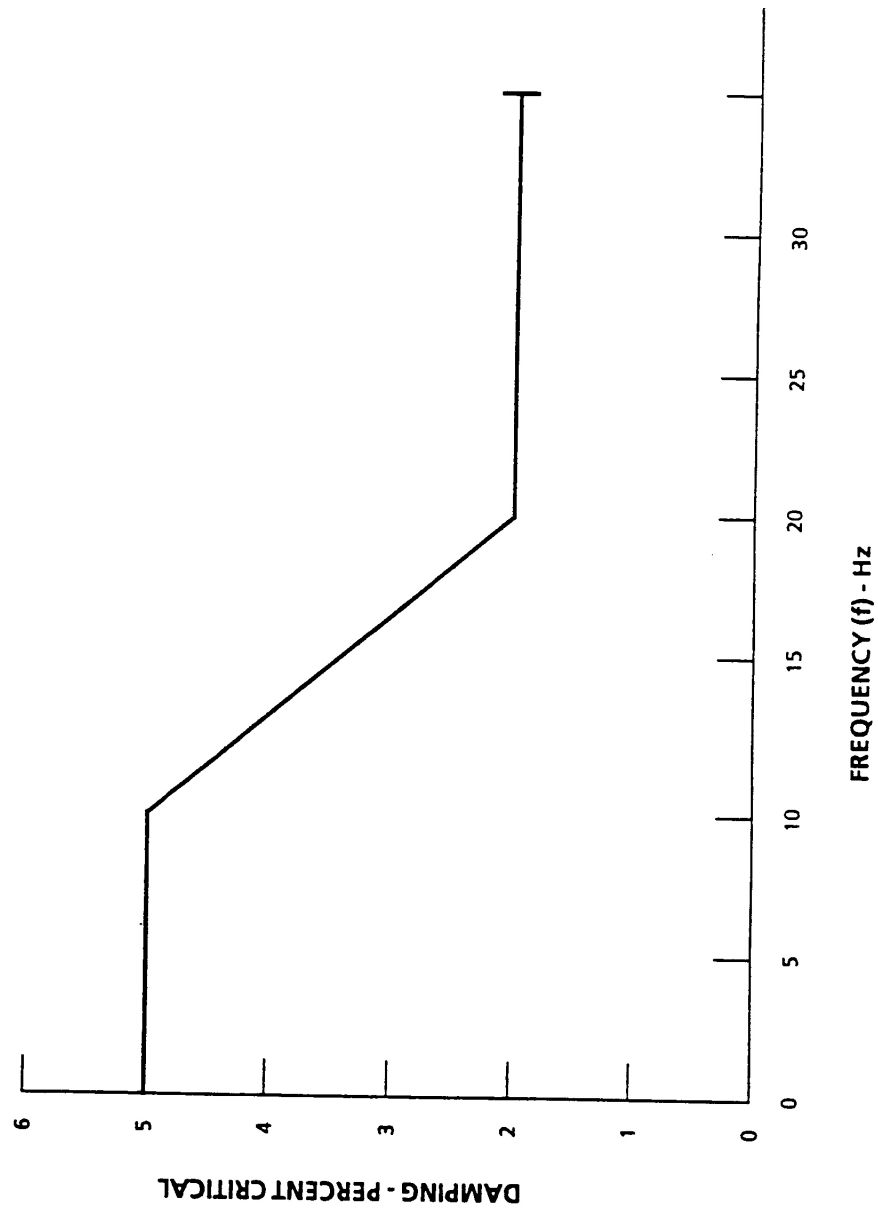


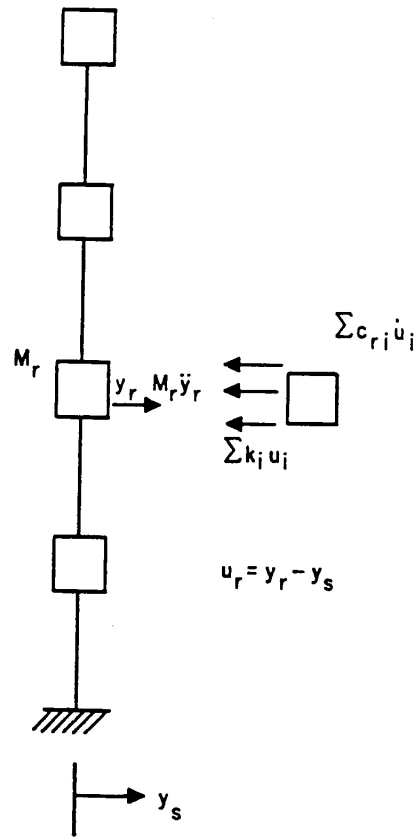
SEABROOK STATION
UPDATED FINAL SAFETY
ANALYSIS REPORT

Primary Auxiliary Building Amplified Response Spectra
(Vertical) OBE, 1% Damping

Figure 3.7(B)-36







SEABROOK STATION UPDATED FINAL SAFETY ANALYSIS REPORT	Multi-Degree of Freedom System	
		Figure 3.7(N)-1