

NOT TO SCALE

(Rev. 12 1/03)

NOTE: NODES ARE AS SHOWN ON TABLE 12.2-1.



PERRY NUCLEAR POWER PLANT

Radiation Source Model

Figure 12.2-1

Removed in Accordance with RIS 2015-17

(REV. 20 10/2017)

PERRY NUCLEAR POWER PLANT
10 CENTER RD., PERRY, OHIO 44081

RADIATION ZONES,
PLAN A ABOVE ELEVS. 568'-6", 574'-10",
577'-6" AND 580'-6"
FIGURE 12.3-1
(DWG. E-013-0003-00000)

Removed in Accordance with RIS 2015-17

(REV. 20 10/2017)

PERRY NUCLEAR POWER PLANT
10 CENTER RD., PERRY, OHIO 44081

RADIATION ZONES, PLAN B ABOVE
ELEVS. 593'-6", 599'-0", 600'-6",
602'-6", AND 605'-6"

FIGURE 12.3-2
(DWG. E-013-0004-00000)

Removed in Accordance with RIS 2015-17

(REV. 20 10/2017)

PERRY NUCLEAR POWER PLANT
10 CENTER RD., PERRY, OHIO 44081

RADIATION ZONES, PLAN C ABOVE
ELEVS. 620'-6", 623'-6" AND
624'-6"

FIGURE 12.3-3
(DWG. E-013-0005-00000)

Removed in Accordance with RIS 2015-17

(REV. 20 10/2017)

PERRY NUCLEAR POWER PLANT
10 CENTER RD., PERRY, OHIO 44081

RADIATION ZONES, PLAN D
ABOVE ELEVS. 638'-6", 642'-0"
AND 647'-6"
FIGURE 12.3-4
(DWG. E-013-0006-00000)

Removed in Accordance with RIS 2015–17

(REV. 20 10/2017)

PERRY NUCLEAR POWER PLANT
10 CENTER RD., PERRY, OHIO 44081

RADIATION ZONES, PLAN E ABOVE
ELEVS. 652'-0" AND EL. 654'-6",

FIGURE 12.3-5
(DWG. E-013-0007-00000)

Removed in Accordance with RIS 2015-17

(REV. 20 10/2017)

PERRY NUCLEAR POWER PLANT
10 CENTER RD., PERRY, OHIO 44081

RADIATION ZONES, PLAN F ABOVE
ELEVS. 664'-7", 665'-0", AND
670'-6"

FIGURE 12.3-6
(DWG. E-013-0008-00000)

Removed in Accordance with RIS 2015-17

(REV. 20 10/2017)

PERRY NUCLEAR POWER PLANT
10 CENTER RD., PERRY, OHIO 44081

RADIATION ZONE, PLAN G ABOVE
ELEVS. 689'-6"

FIGURE 12.3-7
(DWG. E-013-0009-00000)

Removed in Accordance with RIS 2015–17

(REV. 20 10/2017)

PERRY NUCLEAR POWER PLANT
10 CENTER RD., PERRY, OHIO 44081

RADIATION ZONE,
PLAN H ROOF PLAN

FIGURE 12.3-8
(DWG. E-013-0010-00000)

Removed in Accordance with RIS 2015–17

(REV. 20 10/2017)

PERRY NUCLEAR POWER PLANT
10 CENTER RD., PERRY, OHIO 44081

RADIATION ZONE,
SECTION A-A

FIGURE 12.3-9
(DWG. E-013-0011-00000)

Removed in Accordance with RIS 2015–17

(REV. 20 10/2017)

PERRY NUCLEAR POWER PLANT
10 CENTER RD., PERRY, OHIO 44081

RADIATION ZONE,
SECTION B-B

FIGURE 12.3-10
(DWG. E-013-0012-00000)

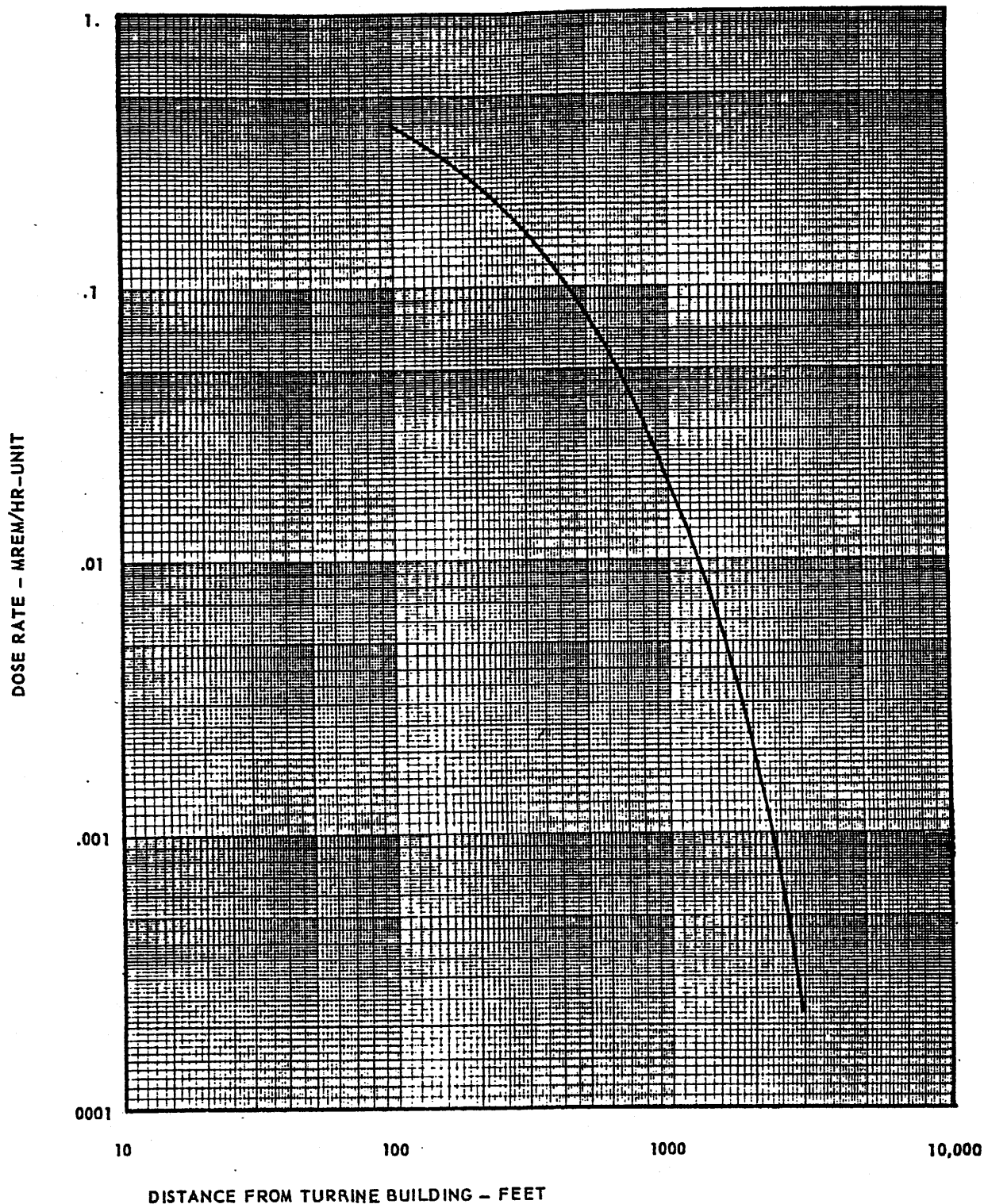
Removed in Accordance with RIS 2015-17

(REV. 20 10/2017)

PERRY NUCLEAR POWER PLANT
10 CENTER RD., PERRY, OHIO 44081

RADIATION ZONE,
SECTION C-C

FIGURE 12.3-11
(DWG. E-013-0013-00000)



(Rev. 12 1/03)



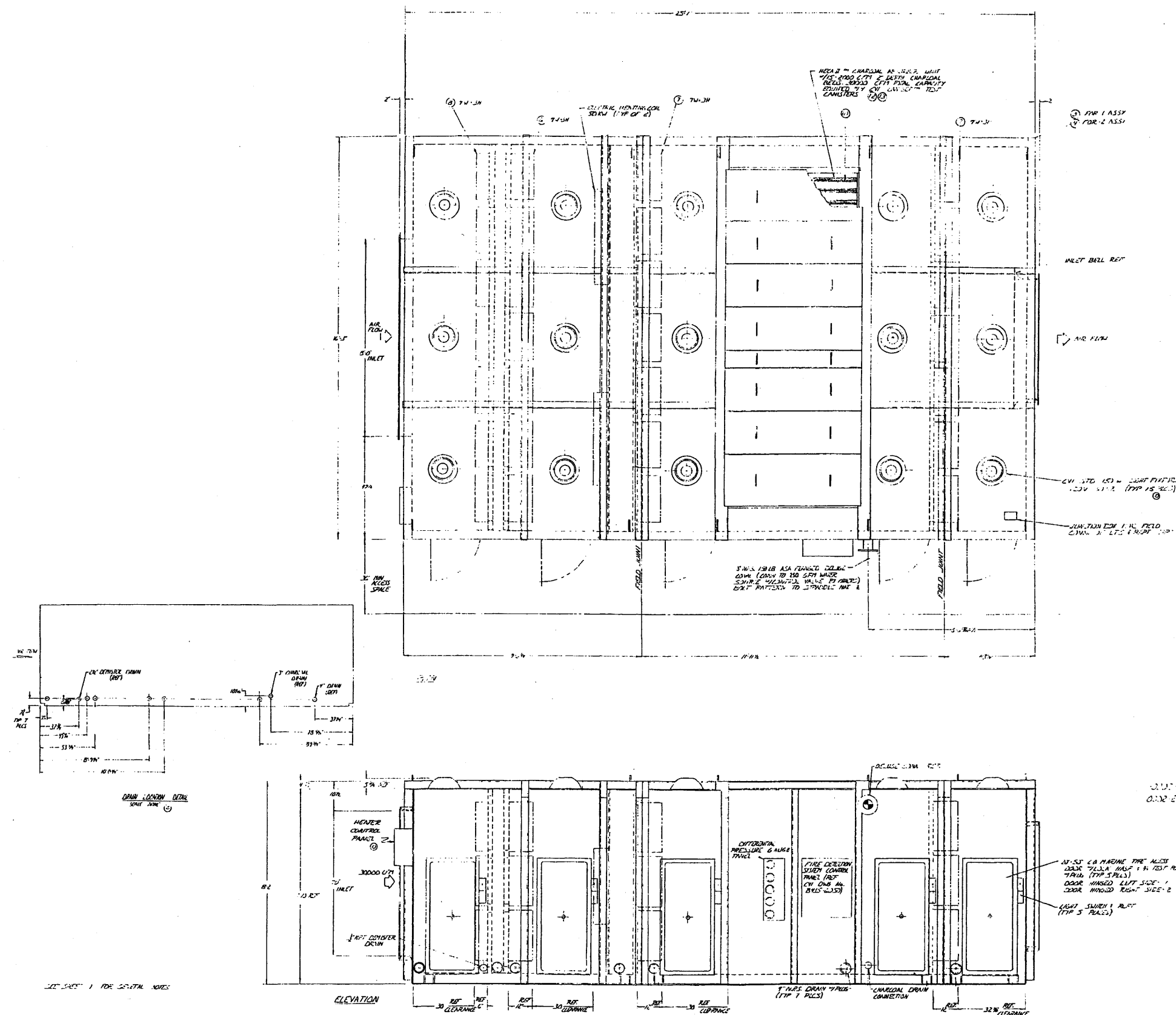
PERRY NUCLEAR POWER PLANT

Skyshine Dose Rate (mrem/hr)
vs. Distance (ft.)

Figure 12.3-12

REVISIONS					
CHK	DATE	BY	APP	REV	DESCRIPTION
R	12/12/12	EP	REV	1	REVISED TO 12/12/12
C	12/12/12	EP	REV	2	ADDED NEW 12/12/12
D	12/12/12	EP	REV	3	ADDED NEW 12/12/12

BILL OF MATERIAL			
ITEM	PART NUMBER	DESCRIPTION	MATERIAL



(Rev. 12 1/03)

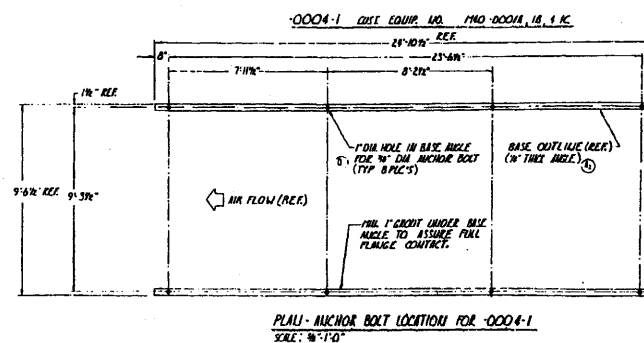
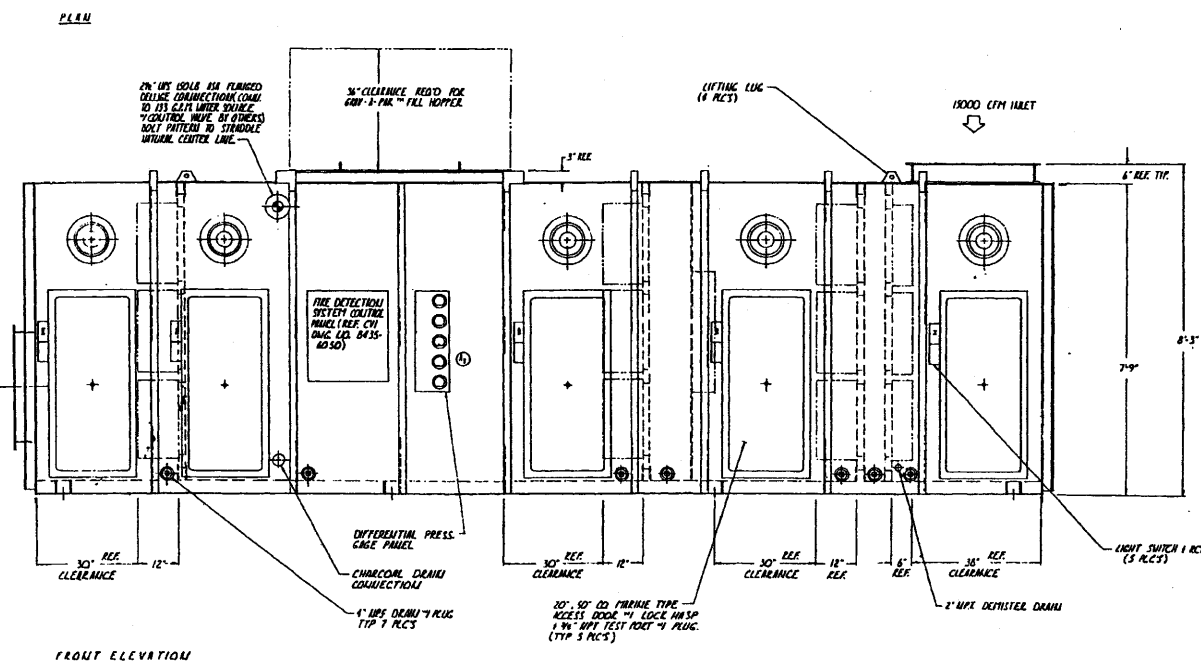
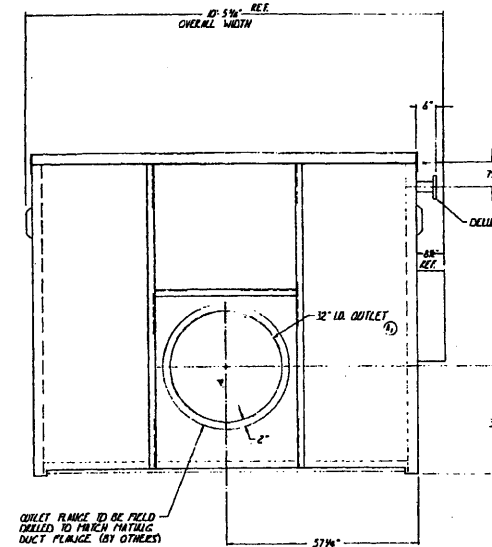
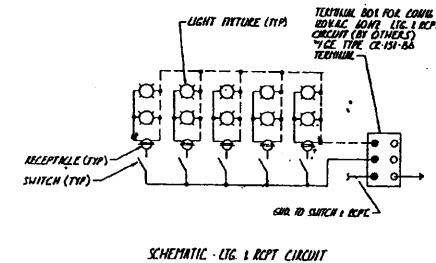
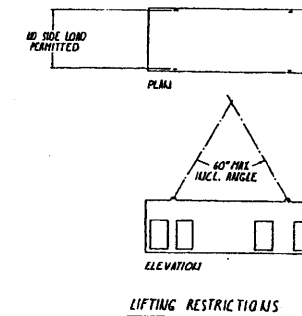
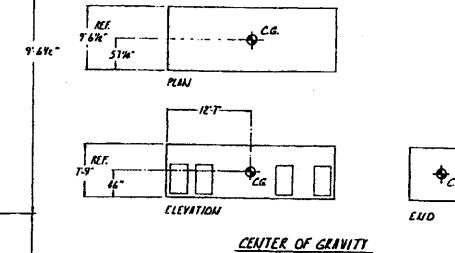
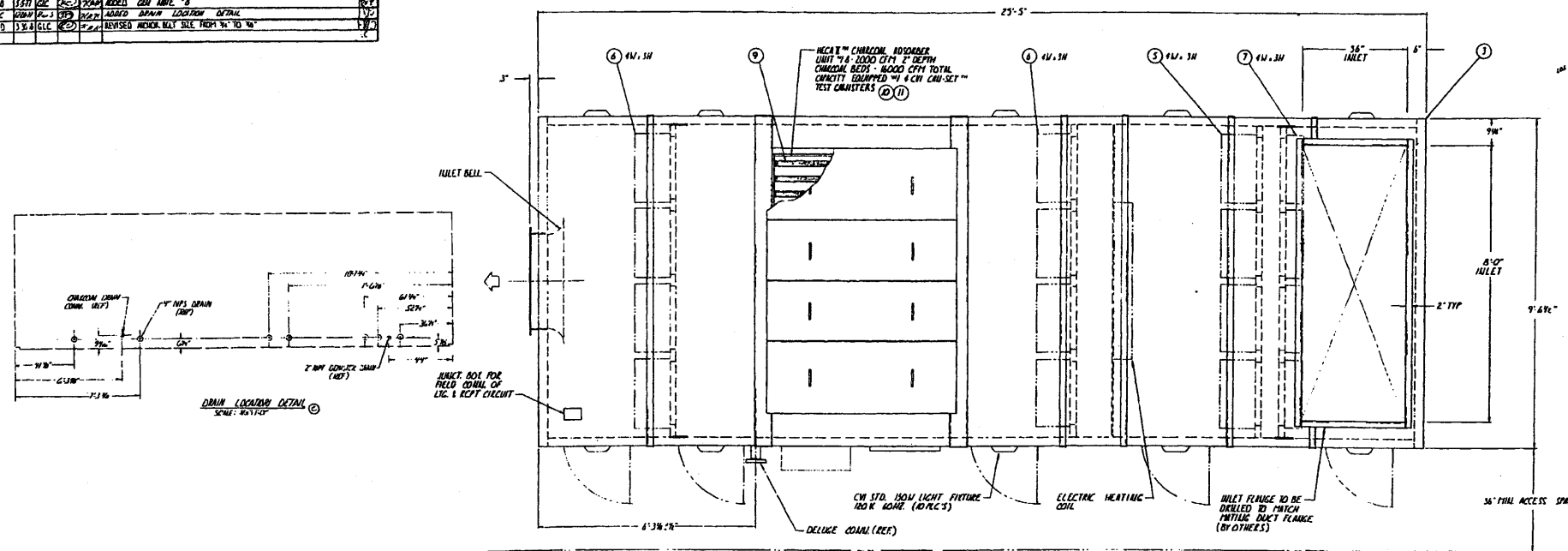
PERRY NUCLEAR POWER PLANT

General Arrangement - Control Room
Emergency Recirculation Plenum

Figure 12.3-14 (Sheet 2 of 2)

REVISIONS				
NO.	DATE	BY	CHKD	DESCRIPTION
1	1/27/62	W.P.	W.P.	REV OUTLET LUG 3/4" INCH 2 ADDED BOLT THICKNESS
2	1/27/62	W.P.	W.P.	REV GAGE PANEL
3	1/27/62	W.P.	W.P.	REV GAGE PANEL
4	1/27/62	W.P.	W.P.	REV GAGE PANEL
5	1/27/62	W.P.	W.P.	REV GAGE PANEL
6	1/27/62	W.P.	W.P.	REV GAGE PANEL
7	1/27/62	W.P.	W.P.	REV GAGE PANEL
8	1/27/62	W.P.	W.P.	REV GAGE PANEL
9	1/27/62	W.P.	W.P.	REV GAGE PANEL
10	1/27/62	W.P.	W.P.	REV GAGE PANEL

BILL OF MATERIAL				
ITEM	QTY	PART NUMBER	DESCRIPTION	REMARKS
1	1	W.P.	W.P.	
2	1	W.P.	W.P.	
3	1	W.P.	W.P.	
4	1	W.P.	W.P.	
5	1	W.P.	W.P.	
6	1	W.P.	W.P.	
7	1	W.P.	W.P.	
8	1	W.P.	W.P.	
9	1	W.P.	W.P.	
10	1	W.P.	W.P.	
11	1	W.P.	W.P.	
12	1	W.P.	W.P.	
13	1	W.P.	W.P.	
14	1	W.P.	W.P.	
15	1	W.P.	W.P.	
16	1	W.P.	W.P.	
17	1	W.P.	W.P.	
18	1	W.P.	W.P.	
19	1	W.P.	W.P.	
20	1	W.P.	W.P.	
21	1	W.P.	W.P.	
22	1	W.P.	W.P.	
23	1	W.P.	W.P.	
24	1	W.P.	W.P.	
25	1	W.P.	W.P.	
26	1	W.P.	W.P.	
27	1	W.P.	W.P.	
28	1	W.P.	W.P.	
29	1	W.P.	W.P.	
30	1	W.P.	W.P.	
31	1	W.P.	W.P.	
32	1	W.P.	W.P.	
33	1	W.P.	W.P.	
34	1	W.P.	W.P.	
35	1	W.P.	W.P.	
36	1	W.P.	W.P.	
37	1	W.P.	W.P.	
38	1	W.P.	W.P.	
39	1	W.P.	W.P.	
40	1	W.P.	W.P.	
41	1	W.P.	W.P.	
42	1	W.P.	W.P.	
43	1	W.P.	W.P.	
44	1	W.P.	W.P.	
45	1	W.P.	W.P.	
46	1	W.P.	W.P.	
47	1	W.P.	W.P.	
48	1	W.P.	W.P.	
49	1	W.P.	W.P.	
50	1	W.P.	W.P.	
51	1	W.P.	W.P.	
52	1	W.P.	W.P.	
53	1	W.P.	W.P.	
54	1	W.P.	W.P.	
55	1	W.P.	W.P.	
56	1	W.P.	W.P.	
57	1	W.P.	W.P.	
58	1	W.P.	W.P.	
59	1	W.P.	W.P.	
60	1	W.P.	W.P.	
61	1	W.P.	W.P.	
62	1	W.P.	W.P.	
63	1	W.P.	W.P.	
64	1	W.P.	W.P.	
65	1	W.P.	W.P.	
66	1	W.P.	W.P.	
67	1	W.P.	W.P.	
68	1	W.P.	W.P.	
69	1	W.P.	W.P.	
70	1	W.P.	W.P.	
71	1	W.P.	W.P.	
72	1	W.P.	W.P.	
73	1	W.P.	W.P.	
74	1	W.P.	W.P.	
75	1	W.P.	W.P.	
76	1	W.P.	W.P.	
77	1	W.P.	W.P.	
78	1	W.P.	W.P.	
79	1	W.P.	W.P.	
80	1	W.P.	W.P.	
81	1	W.P.	W.P.	
82	1	W.P.	W.P.	
83	1	W.P.	W.P.	
84	1	W.P.	W.P.	
85	1	W.P.	W.P.	
86	1	W.P.	W.P.	
87	1	W.P.	W.P.	
88	1	W.P.	W.P.	
89	1	W.P.	W.P.	
90	1	W.P.	W.P.	
91	1	W.P.	W.P.	
92	1	W.P.	W.P.	
93	1	W.P.	W.P.	
94	1	W.P.	W.P.	
95	1	W.P.	W.P.	
96	1	W.P.	W.P.	
97	1	W.P.	W.P.	
98	1	W.P.	W.P.	
99	1	W.P.	W.P.	
100	1	W.P.	W.P.	



- ANCHOR BOLT PATTERN SHALL BE 15TH A-301 TO BE FURNISHED BY OTHERS
- ANCHOR BOLT TO BE PROVIDED PER CUI SPEC. NO. 8435-23-1035 (EXTERIOR TO BE PERM. COATED ONLY - FINISH PAINT BY OTHERS)
- ITEM NO. 5, 6, 7, 9, 10, 11 TO BE SHIPPED SEPARATE FROM UNIT.
- TOTAL OPERATING WT. 2000 LB. (EST) SHIPPING WT. 2200 LB. (EST)
- SEE CUI CHIT MANUAL FOR INSTALLATION OF FILTERS & COMPONENTS.
- HOUSING DESIGN PRESSURE - 1.5 PSIG @ 1.5 PSIG
- DESIGN AIR FLOW - 15000 CFM
- CUSTOMER TO MAKE FROM INSPECTION TO THIS DRAWING.

GENERAL NOTES

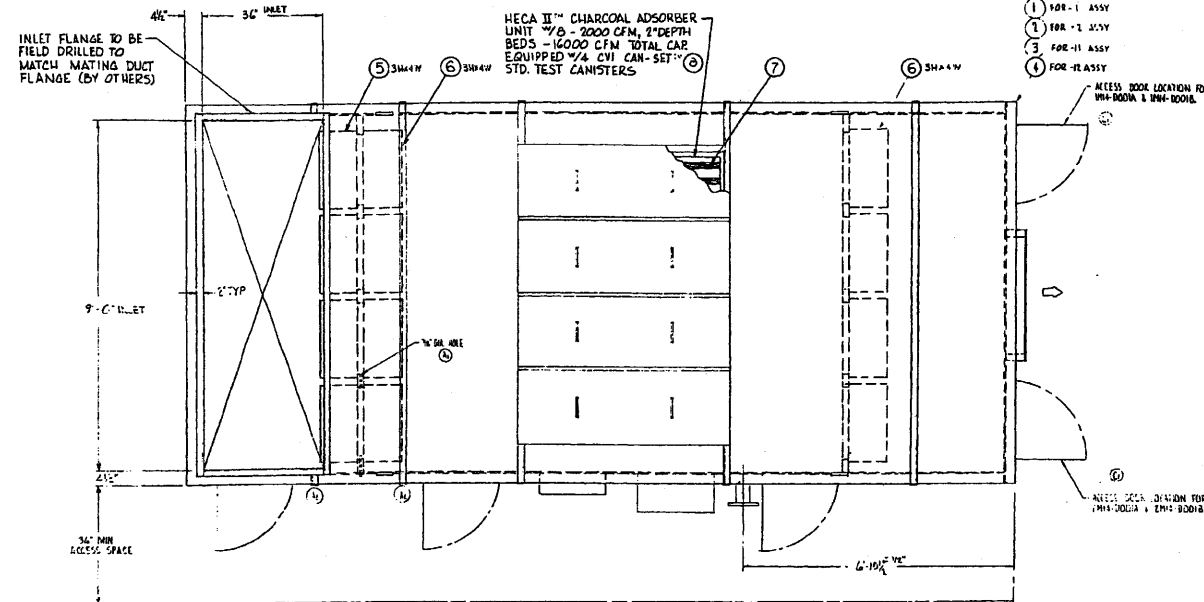
(Rev. 12 1/03)

PERRY NUCLEAR POWER PLANT

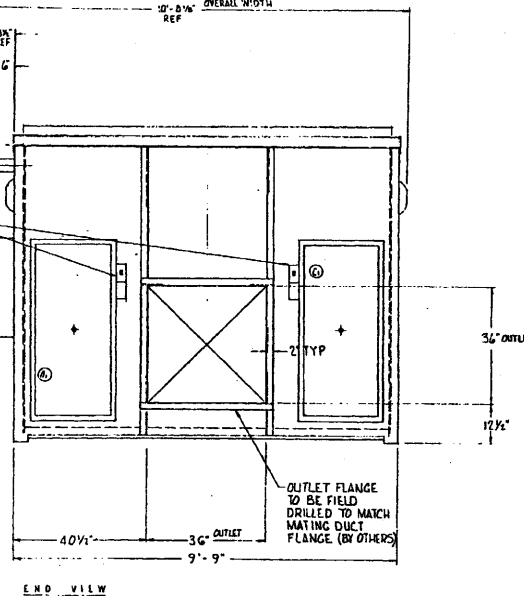
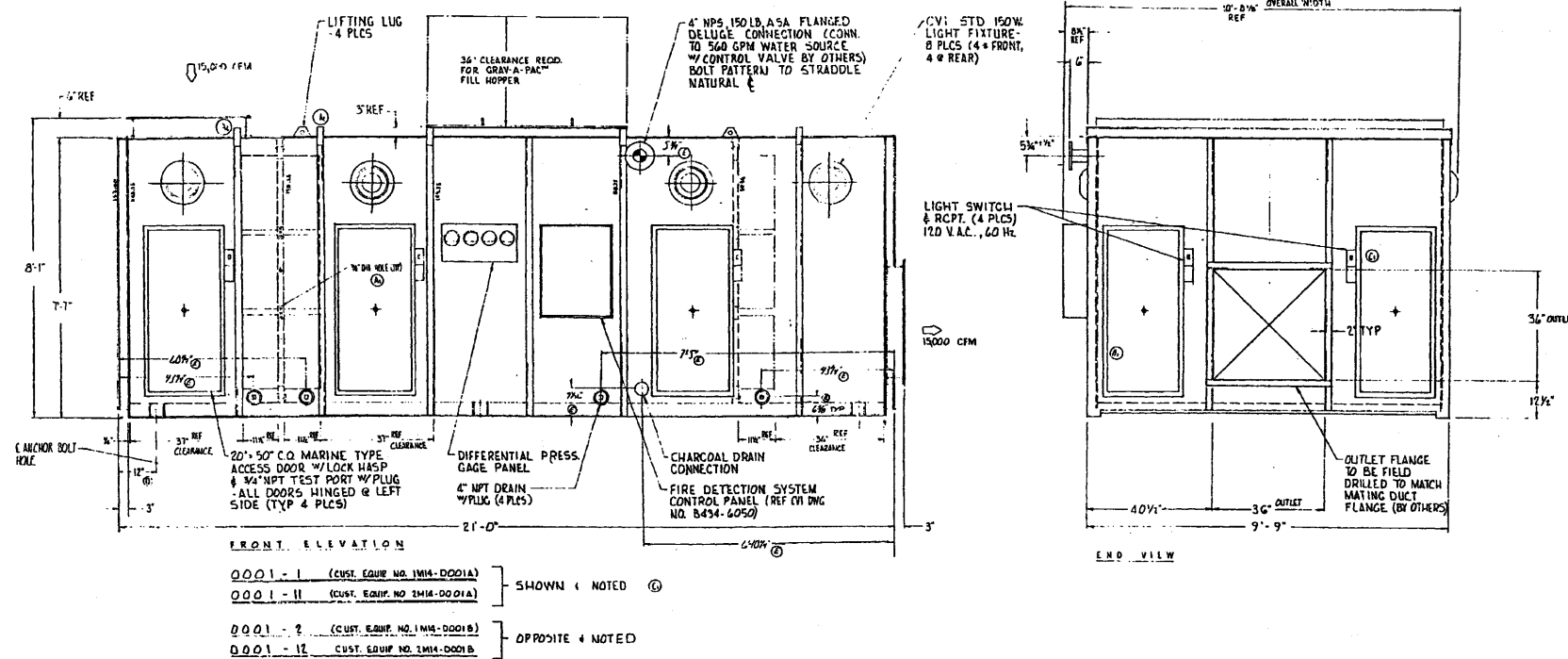
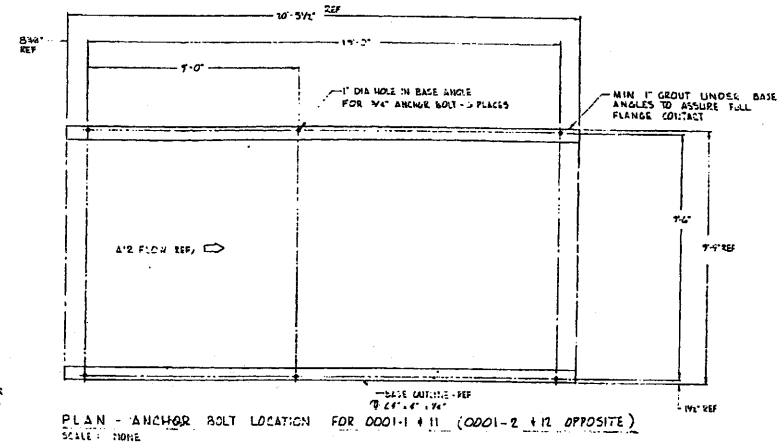
General Arrangement - Fuel Handling Area Exhaust Plenum

Figure 12.3-16

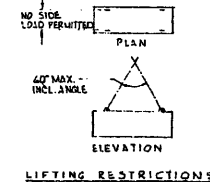
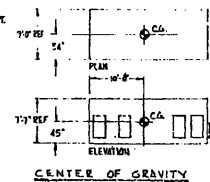
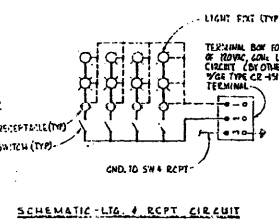
REV.	DATE	BY	CHKD.	APPV.	DESCRIPTION	REVISION
1	10/1/73	WJ	WJ	WJ	DESIGN FOR CONSTRUCTION, DRYWELL VESSEL	10/1/73
2	10/1/73	WJ	WJ	WJ	REV. DRYWELL VESSEL PURGE EXHAUST	10/1/73
3	10/1/73	WJ	WJ	WJ	REV. DRYWELL VESSEL PURGE EXHAUST	10/1/73
4	10/1/73	WJ	WJ	WJ	REV. DRYWELL VESSEL PURGE EXHAUST	10/1/73
5	10/1/73	WJ	WJ	WJ	REV. DRYWELL VESSEL PURGE EXHAUST	10/1/73
6	10/1/73	WJ	WJ	WJ	REV. DRYWELL VESSEL PURGE EXHAUST	10/1/73



NO. REQUIRED					BILL OF MATERIAL																																																																																																																																																																																																																																																																																																																																																																																																																																																																																																																																																																																																																																																																																																																																																																																																																																																																																																																																																																																																																																																																												
1	2	3	4	5	ITEM	PART NUMBER	QTY	1	2	3	4	5	6	7	8	9	10	11	12	13	14	15	16	17	18	19	20	21	22	23	24	25	26	27	28	29	30	31	32	33	34	35	36	37	38	39	40	41	42	43	44	45	46	47	48	49	50	51	52	53	54	55	56	57	58	59	60	61	62	63	64	65	66	67	68	69	70	71	72	73	74	75	76	77	78	79	80	81	82	83	84	85	86	87	88	89	90	91	92	93	94	95	96	97	98	99	100																																																																																																																																																																																																																																																																																																																																																																																																																																																																																																																																																																																																																																																																																																																																																																																																																																																																																																																																																																						
1	1	1	1	1	1	1	1	1	1	1	1	1	1	1	1	1	1	1	1	1	1	1	1	1	1	1	1	1	1	1	1	1	1	1	1	1	1	1	1	1	1	1	1	1	1	1	1	1	1	1	1	1	1	1	1	1	1	1	1	1	1	1	1	1	1	1	1	1	1	1	1	1	1	1	1	1	1	1	1	1	1	1	1	1	1	1	1	1	1	1	1	1	1	1	1	1	1	1	1	1	1	1	1	1	1	1	1	1	1	1	1	1	1	1	1	1	1	1	1	1	1	1	1	1	1	1	1	1	1	1	1	1	1	1	1	1	1	1	1	1	1	1	1	1	1	1	1	1	1	1	1	1	1	1	1	1	1	1	1	1	1	1	1	1	1	1	1	1	1	1	1	1	1	1	1	1	1	1	1	1	1	1	1	1	1	1	1	1	1	1	1	1	1	1	1	1	1	1	1	1	1	1	1	1	1	1	1	1	1	1	1	1	1	1	1	1	1	1	1	1	1	1	1	1	1	1	1	1	1	1	1	1	1	1	1	1	1	1	1	1	1	1	1	1	1	1	1	1	1	1	1	1	1	1	1	1	1	1	1	1	1	1	1	1	1	1	1	1	1	1	1	1	1	1	1	1	1	1	1	1	1	1	1	1	1	1	1	1	1	1	1	1	1	1	1	1	1	1	1	1	1	1	1	1	1	1	1	1	1	1	1	1	1	1	1	1	1	1	1	1	1	1	1	1	1	1	1	1	1	1	1	1	1	1	1	1	1	1	1	1	1	1	1	1	1	1	1	1	1	1	1	1	1	1	1	1	1	1	1	1	1	1	1	1	1	1	1	1	1	1	1	1	1	1	1	1	1	1	1	1	1	1	1	1	1	1	1	1	1	1	1	1	1	1	1	1	1	1	1	1	1	1	1	1	1	1	1	1	1	1	1	1	1	1	1	1	1	1	1	1	1	1	1	1	1	1	1	1	1	1	1	1	1	1	1	1	1	1	1	1	1	1	1	1	1	1	1	1	1	1	1	1	1	1	1	1	1	1	1	1	1	1	1	1	1	1	1	1	1	1	1	1	1	1	1	1	1	1	1	1	1	1	1	1	1	1	1	1	1	1	1	1	1	1	1	1	1	1	1	1	1	1	1	1	1	1	1	1	1	1	1	1	1	1	1	1	1	1	1	1	1	1	1	1	1	1	1	1	1	1	1	1	1	1	1	1	1	1	1	1	1	1	1	1	1	1	1	1	1	1	1	1	1	1	1	1	1	1	1	1	1	1	1	1	1	1	1	1	1	1	1	1	1	1	1	1	1	1	1	1	1	1	1	1	1	1	1	1	1	1	1	1	1	1	1	1	1	1	1	1	1	1	1	1	1	1	1	1	1	1	1	1	1	1	1	1	1	1	1	1	1	1	1	1	1	1	1	1	1	1	1	1	1	1	1	1	1	1	1	1	1	1	1	1	1	1	1	1	1	1	1	1	1	1	1	1	1	1	1	1	1	1	1	1	1	1	1	1	1	1	1	1	1	1	1	1	1	1	1	1	1	1	1	1	1	1	1	1	1	1	1	1	1	1	1	1	1	1	1	1	1	1	1	1	1	1	1	1	1	1	1	1	1	1	1	1	1	1	1	1	1	1	1	1	1	1	1	1	1	1	1	1	1	1	1	1	1	1	1	1	1	1	1	1	1	1	1	1	1	1	1	1	1	1	1	1	1	1	1	1	1	1	1	1	1	1	1	1	1	1	1	1	1	1	1	1	1	1	1	1	1	1	1	1	1	1	1	1	1	1	1	1	1	1	1	1	1	1	1	1	1	1	1	1	1	1	1	1	1	1	1	1	1	1	1	1	1	1	1	1	1	1	1	1	1	1	1	1	1	1	1	1	1	1	1	1	1	1	1	1	1	1	1	1	1	1	1	1	1	1	1	1	1	1	1	1	1	1	1	1	1	1	1	1	1	1	1	1	1	1	1	1	1	1	1	1	1	1	1	1	1	1	1	1	1	1	1	1	1	1	1	1	1	1	1	1	1	1	1	1	1	1	1	1	1	1	1	1	1	1	1	1	1	1	1	1	1	1	1	1	1	1	1	1	1	1	1	1	1	1	1	1	1	1	1	1	1	1	1	1	1	1	1	1	1	1	1	1	1	1	1	1	1	1	1	1	1	1	1	1	1	1	1	1	1	1	1	1	1	1	1	1	1	1	1	1	1	1	1	1	1	1	1	1	1	1	1	1	1	1	1	1	1	1	1	1	1	1	1	1	1	1	1	1	1	1	1	1	1	1	1	1	1	1	1	1	1	1	1	1	1	1	1	1	1	1	1	1	1	1	1	1	1	1	1	1	1	1	1	1	1



1. HOUSING TO BE PAINTED PER CUI SPEC. NO. 100-1000 (EXTERIOR TO BE PRIME COATED ONLY - FINISH PAINT BY OTHERS)
2. ITEM 5, 6, 7 & 8 SHIPPED SEPARATE FROM UNIT.
3. TOTAL OPERATING WT. 14,100 LBS EST., SHIPPING WT. OF HEAVIEST ITEM 14,100 LBS EST.
4. SEE CUI O & M MANUAL FOR INSTALLATION OF FILTERS & COMPONENTS.
5. HOUSING DESIGN PRESSURE - 1.5 PSIG TO +1 PSIG
6. DESIGN AIR FLOW 15,000 CFM
7. CUSTOMER TO MAKE FINAL INSPECTION TO THIS DRAWING



(Rev. 12 1/03)

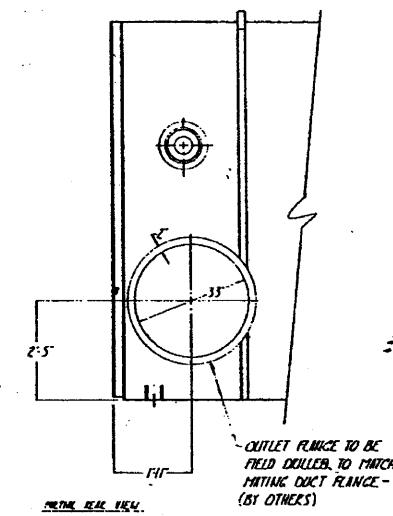
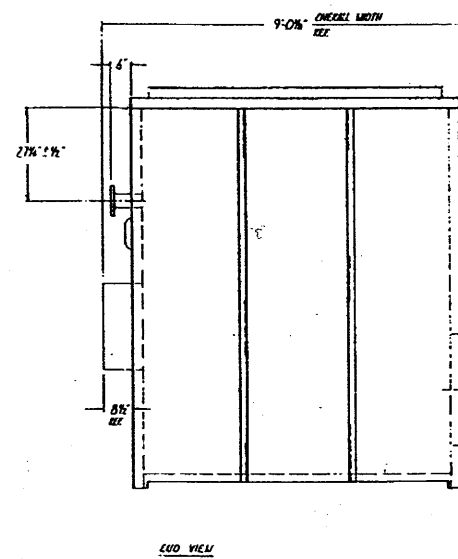
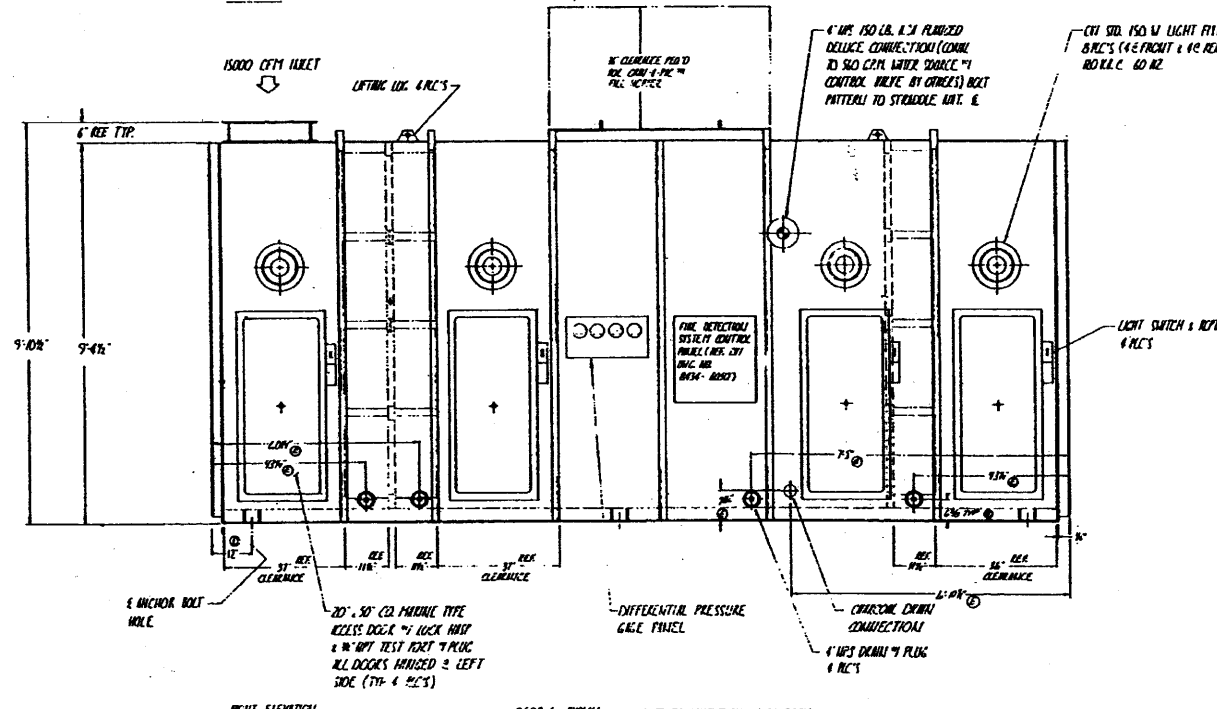
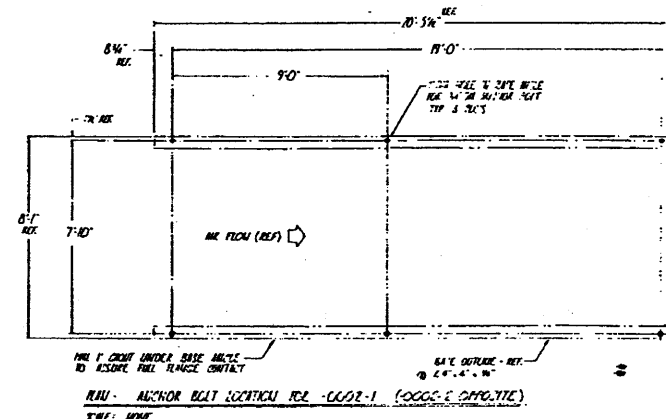
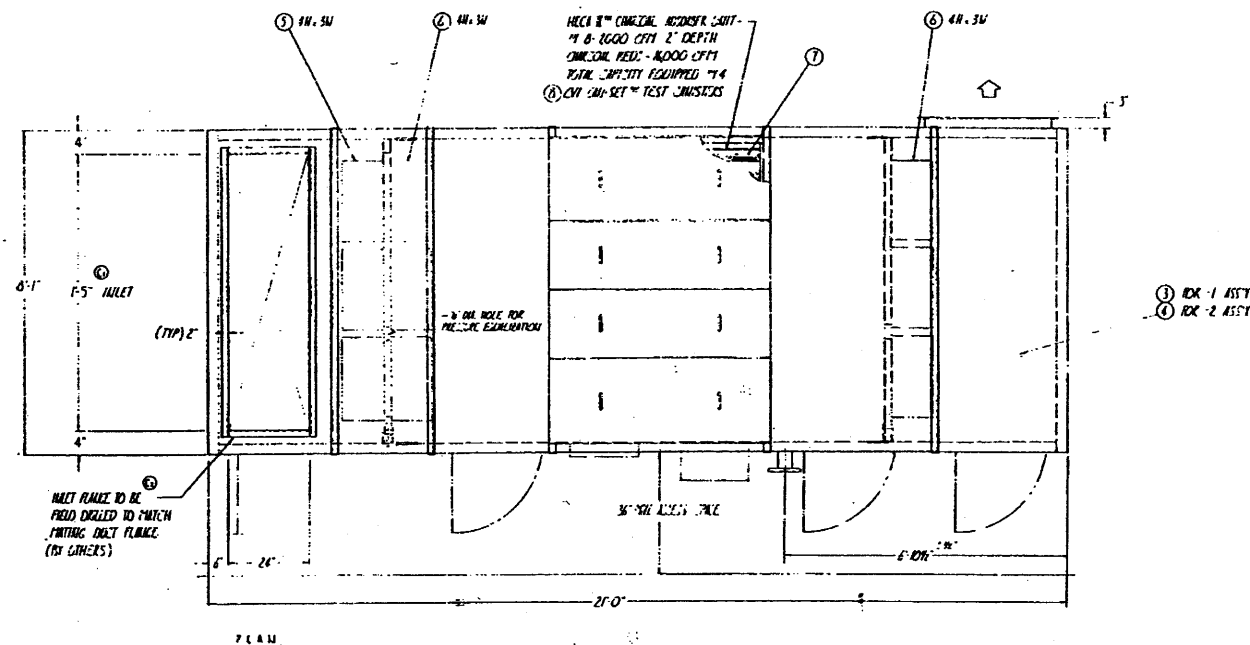
PERRY NUCLEAR POWER PLANT

General Arrangement -
Containment Vessel &
Drywell Purge Exhaust

Figure 12.3-17

REV	DATE	BY	CHKD	DESCRIPTION
1	12/10/77	WJ	WJ	REV TO 12000-001 & 12000-002
2	12/10/77	WJ	WJ	REV TO 12000-001 & 12000-002
3	12/10/77	WJ	WJ	REV TO 12000-001 & 12000-002
4	12/10/77	WJ	WJ	REV TO 12000-001 & 12000-002
5	12/10/77	WJ	WJ	REV TO 12000-001 & 12000-002
6	12/10/77	WJ	WJ	REV TO 12000-001 & 12000-002
7	12/10/77	WJ	WJ	REV TO 12000-001 & 12000-002
8	12/10/77	WJ	WJ	REV TO 12000-001 & 12000-002
9	12/10/77	WJ	WJ	REV TO 12000-001 & 12000-002
10	12/10/77	WJ	WJ	REV TO 12000-001 & 12000-002

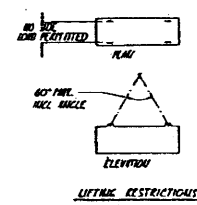
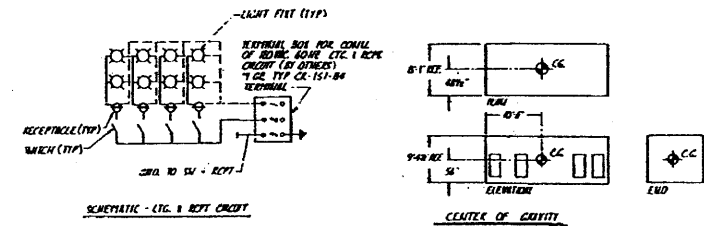
REV	DATE	BY	CHKD	DESCRIPTION
1	12/10/77	WJ	WJ	REV TO 12000-001 & 12000-002
2	12/10/77	WJ	WJ	REV TO 12000-001 & 12000-002
3	12/10/77	WJ	WJ	REV TO 12000-001 & 12000-002
4	12/10/77	WJ	WJ	REV TO 12000-001 & 12000-002
5	12/10/77	WJ	WJ	REV TO 12000-001 & 12000-002
6	12/10/77	WJ	WJ	REV TO 12000-001 & 12000-002
7	12/10/77	WJ	WJ	REV TO 12000-001 & 12000-002
8	12/10/77	WJ	WJ	REV TO 12000-001 & 12000-002
9	12/10/77	WJ	WJ	REV TO 12000-001 & 12000-002
10	12/10/77	WJ	WJ	REV TO 12000-001 & 12000-002



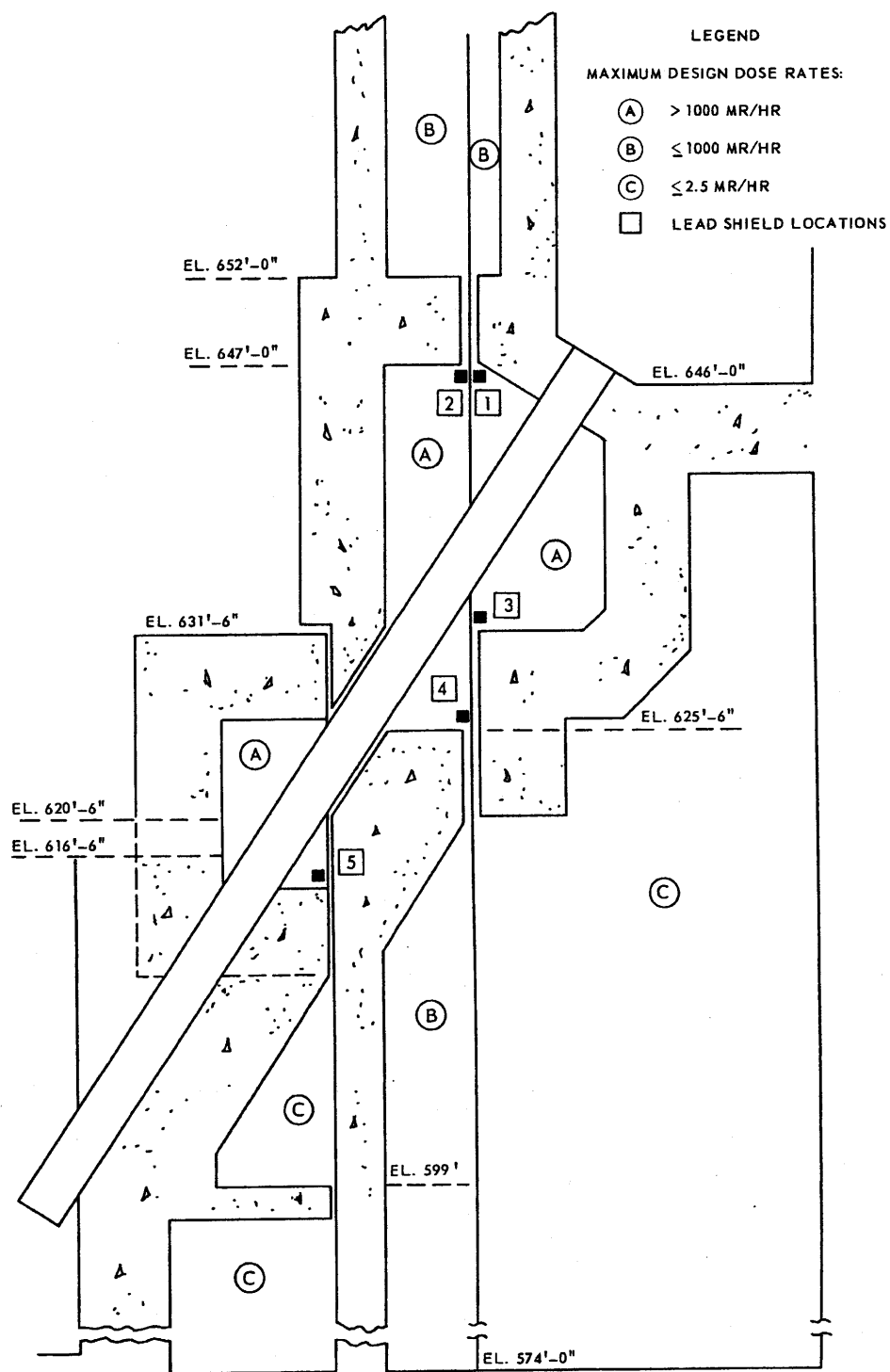
1. HOLDING TO BE FINISHED PER CH. 12000-001 & 12000-002 (EXCEPT TO BE FINISHED PER CH. 12000-001 & 12000-002)
2. TOTAL OPERATING WEIGHT APPROX. 150,000 LBS. (EXCEPT TO BE FINISHED PER CH. 12000-001 & 12000-002)
3. SEE CH. 12000-001 FOR INSULATION OF PLANT AND COMPONENTS.
4. HOLDING DESIGN PRESSURE - 1.5 PSIG TO 1.5 PSIG.
5. DESIGN AIR FLOW - 15000 CFM.
6. EXCEPT TO BE FINISHED PER CH. 12000-001 & 12000-002.

GENERAL NOTES

12000-001: EXHAUST EQUIPMENT NO. 12000-001
12000-002: EXHAUST EQUIPMENT NO. 12000-002



(Rev. 12 1/03)
PERRY NUCLEAR POWER PLANT
 General Arrangement -
 Controlled Access Area
 Exhaust Plenum
 Figure 12.3-18



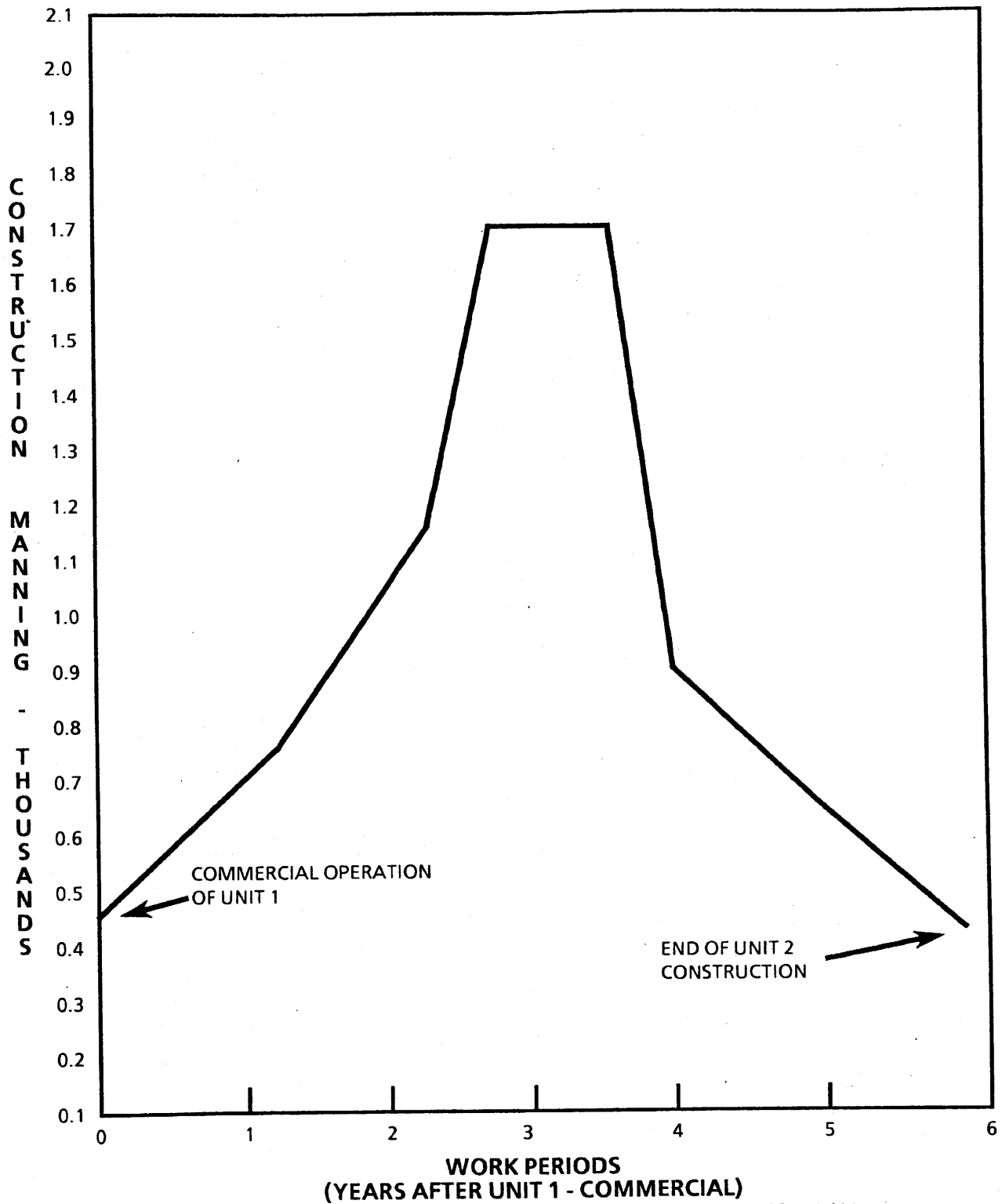
(Rev. 12 1/03)



PERRY NUCLEAR POWER PLANT

Inclined Fuel Transfer
Tube Radiation Shielding

Figure 12.3-21



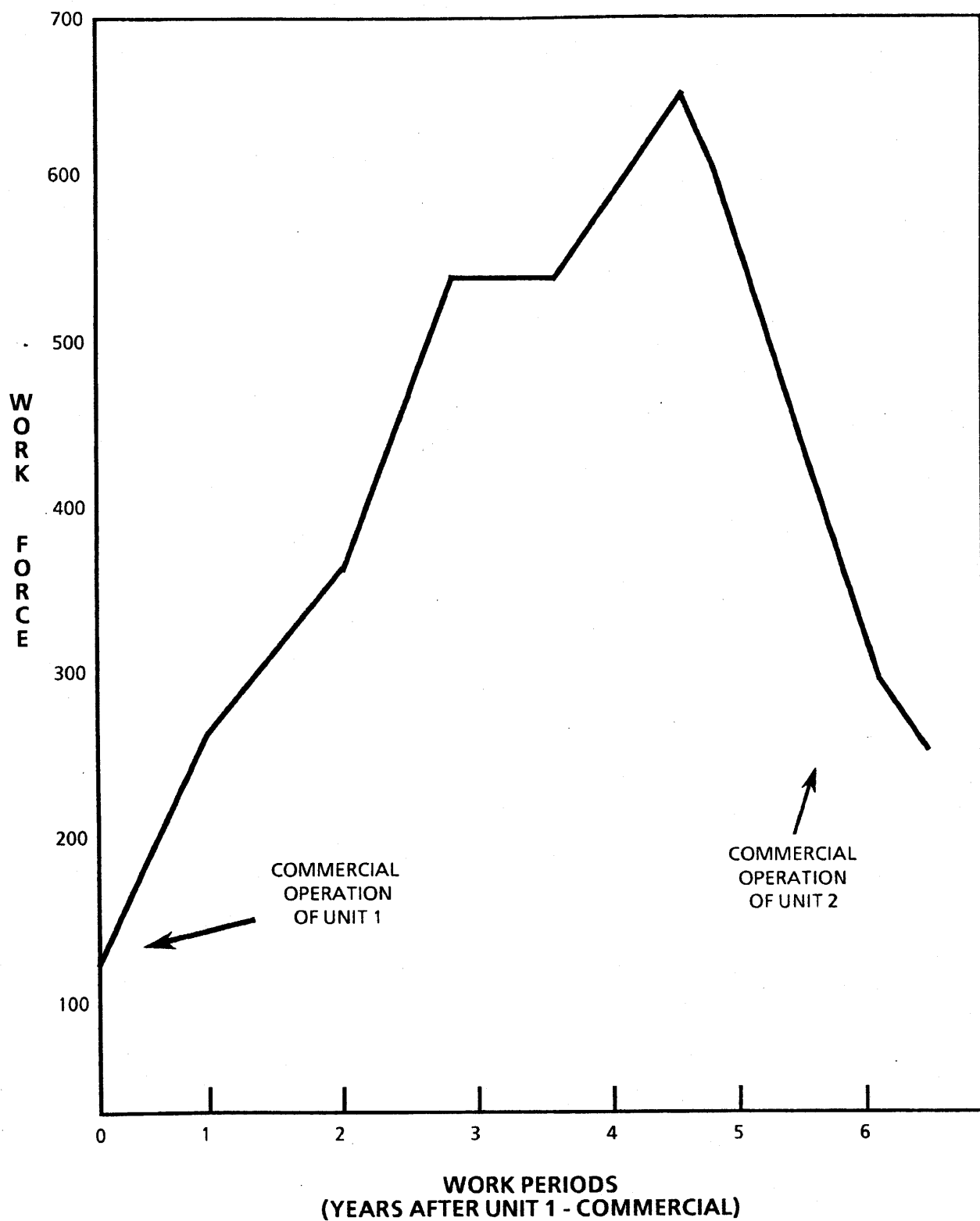
(Rev. 12 1/03)



PERRY NUCLEAR POWER PLANT

Engineering and Construction
Schedule

Figure 12.4-1



(Rev. 12 1/03)



PERRY NUCLEAR POWER PLANT

Site Organization Manning
(Without Perry Plant Department)

Figure 12.4-2

Removed in Accordance with RIS 2015-17

(REV. 20 10/2017)

PERRY NUCLEAR POWER PLANT
10 CENTER RD., PERRY, OHIO 44081

POST-ACCIDENT RADIATION ZONES,
PLAN A ABOVE ELEVS. 568'-6", 574'-10",
577'-6" AND 580'-6", PLANT COMPLEX
FIGURE 12.6-1
(DWG. E-013-0003-00000)

Removed in Accordance with RIS 2015-17

(REV. 20 10/2017)

PERRY NUCLEAR POWER PLANT
10 CENTER RD., PERRY, OHIO 44081

POST-ACCIDENT RADIATION ZONES,
PLAN B ABOVE ELEVS. 593'-6",
599'-0", 600'-6", 602'-6", AND 605'-6",
PLANT COMPLEX
FIGURE 12.6-2
(DWG. E-013-0004-00000)

Removed in Accordance with RIS 2015-17

(REV. 20 10/2017)

PERRY NUCLEAR POWER PLANT
10 CENTER RD., PERRY, OHIO 44081

POST-ACCIDENT RADIATION ZONES,
PLAN C ABOVE ELEVS. 620'-6",
623'-6" AND 624'-6", PLANT COMPLEX
FIGURE 12.6-3
(DWG. E-013-0005-00000)

Removed in Accordance with RIS 2015-17

(REV. 20 10/2017)

<p>PERRY NUCLEAR POWER PLANT 10 CENTER RD., PERRY, OHIO 44081</p>
<p>POST-ACCIDENT RADIATION ZONES, PLAN D ABOVE ELEVS. 638'-6", 642'-0" AND 647'-6", PLANT COMPLEX FIGURE 12.6-4 (DWG. E-013-0006-00000)</p>

Removed in Accordance with RIS 2015-17

(REV. 20 10/2017)

PERRY NUCLEAR POWER PLANT
10 CENTER RD., PERRY, OHIO 44081

POST-ACCIDENT RADIATION ZONES,
PLAN E ABOVE ELEVS. 652'-0"
AND EL. 654'-6", PLANT COMPLEX
FIGURE 12.6-5
(DWG. E-013-0007-00000)

Removed in Accordance with RIS 2015-17

(REV. 20 10/2017)

PERRY NUCLEAR POWER PLANT
10 CENTER RD., PERRY, OHIO 44081

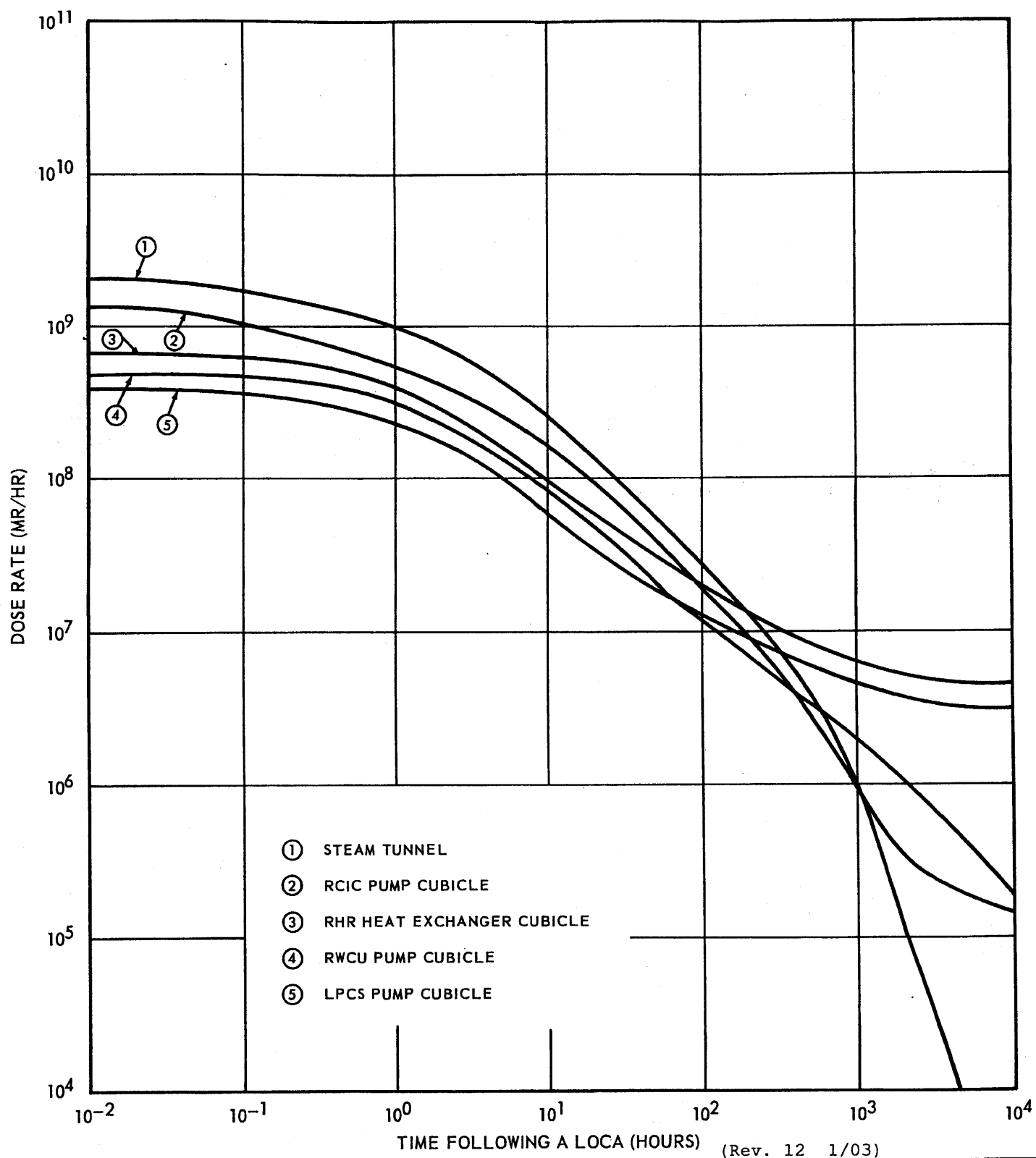
POST-ACCIDENT RADIATION ZONES,
PLAN F ABOVE ELEV. 664'-7",
665'-0", AND 670'-6", PLANT COMPLEX
FIGURE 12.6-6
(DWG. E-013-0008-00000)

Removed in Accordance with RIS 2015-17

(REV. 20 10/2017)

PERRY NUCLEAR POWER PLANT
10 CENTER RD., PERRY, OHIO 44081

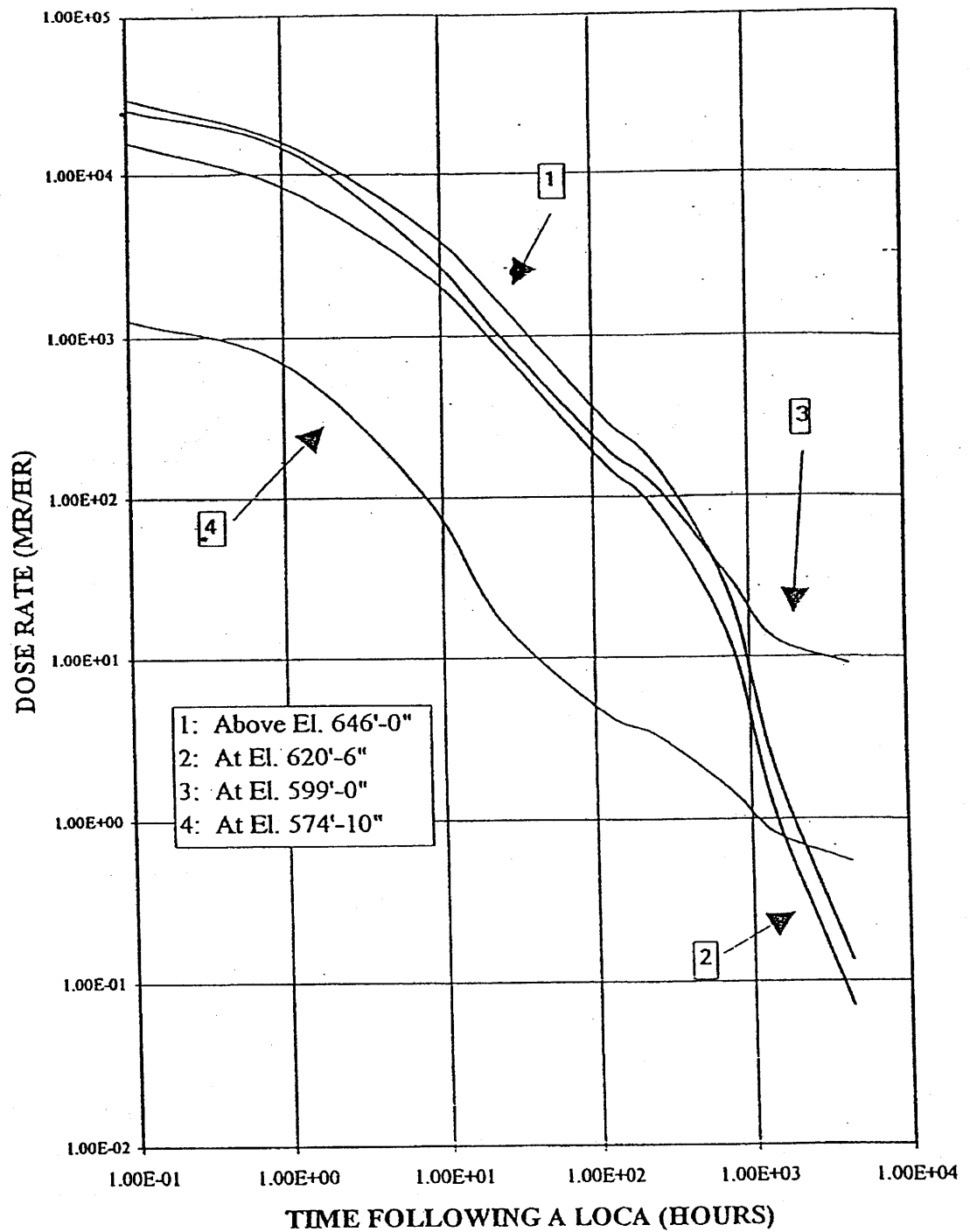
POST-ACCIDENT RADIATION ZONE,
PLAN G ABOVE ELEVS. 689'-6",
PLANT COMPLEX
FIGURE 12.6-7
(DWG. E-013-0009-00000)



PERRY NUCLEAR POWER PLANT

Auxiliary Building Dose Rates
 Versus Time Following a LOCA

Figure 12.6-8



(Rev. 13 12/03)



PERRY NUCLEAR POWER PLANT

Intermediate Building Dose
 Rates Versus Time Following a LOCA

Figure 12.6-9