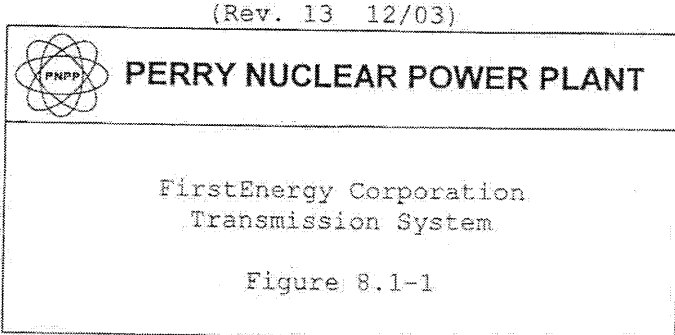
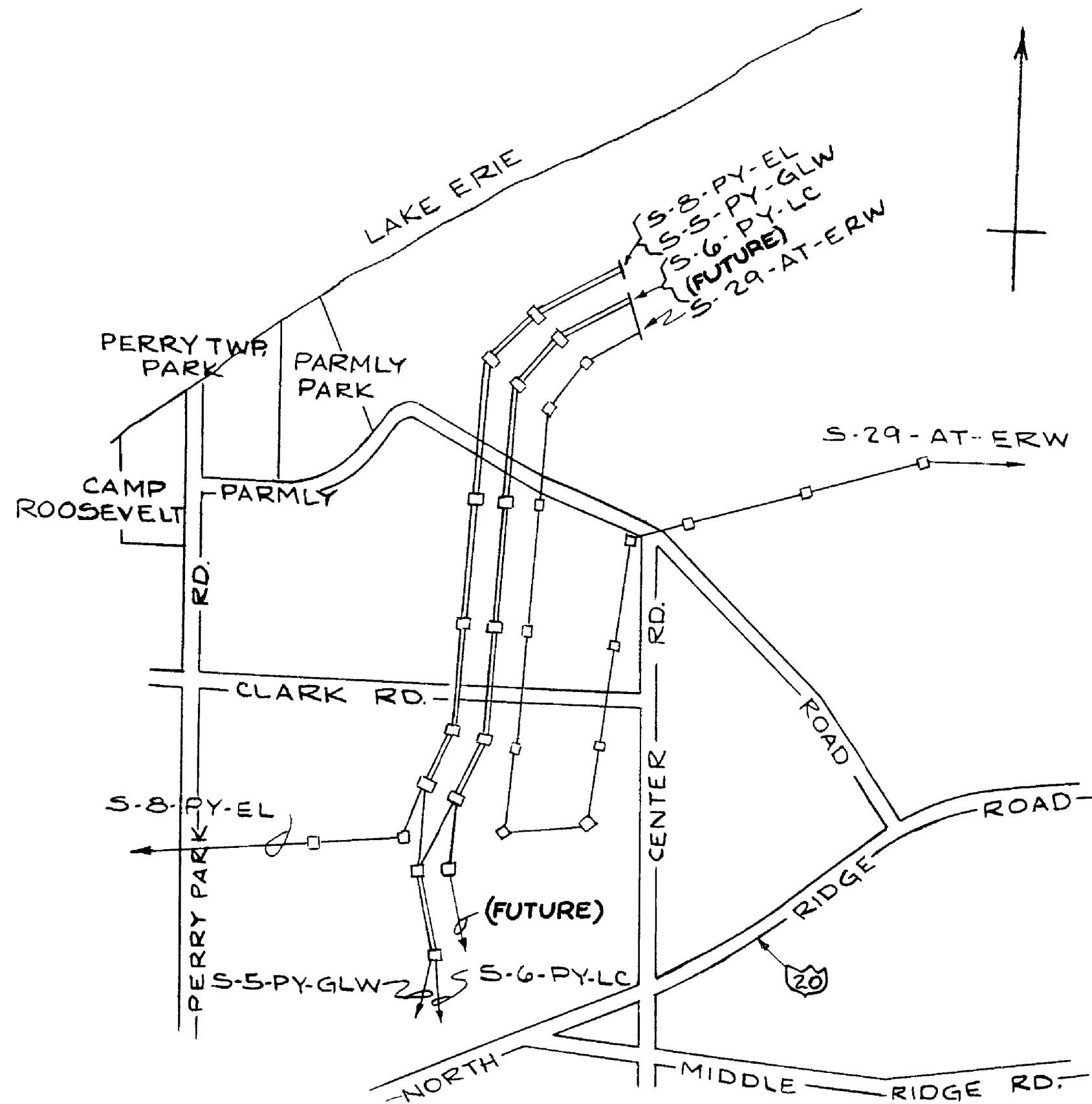


SYSTEM FACILITIES



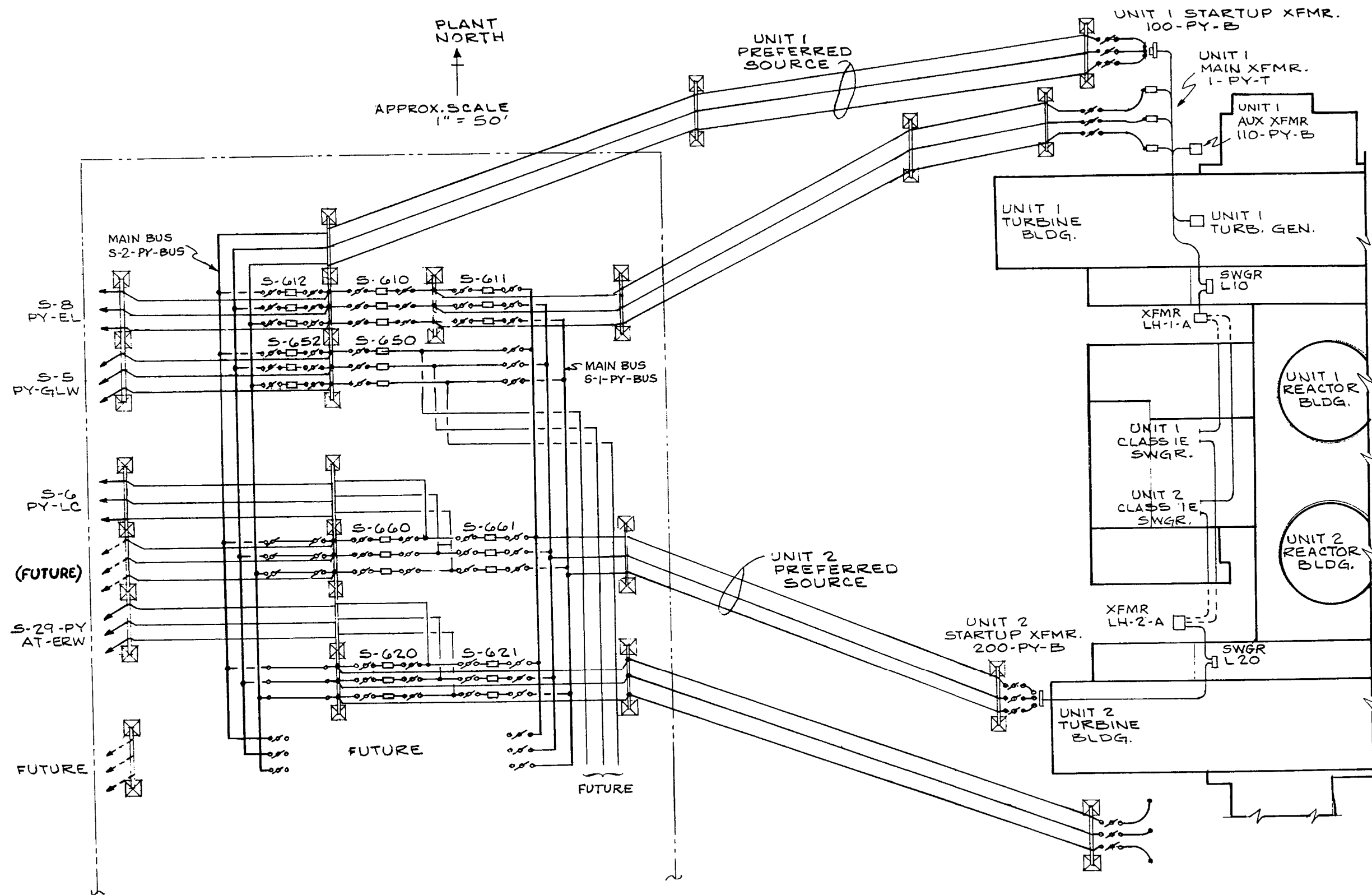


(REV. 20 10/2017)

PERRY NUCLEAR POWER PLANT
10 CENTER RD., PERRY, OHIO 44081

TRANSMISSION LINES
LAYOUT

FIGURE 8.2-1

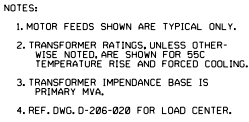


(REV. 20 10/2017)

PERRY NUCLEAR POWER PLANT
10 CENTER RD., PERRY, OHIO 44081

PREFERRED POWER
SYSTEM LAYOUT

FIGURE 8.2-3



PERRY NUCLEAR POWER PLANT
10 CENTER RD., PERRY, OHIO 44081

MAIN ONE LINE DIAGRAM,
13.8 KV AND 4.16 KV
FIGURE 8.3-1
(DWG. D-206-0010-00000)

Removed in Accordance with RIS 2015-17

(REV. 20 10/2017)

PERRY NUCLEAR POWER PLANT

10 CENTER RD., PERRY, OHIO 44081

CONTROL COMPLEX AND DIESEL GENERATOR
BUILDING EQUIPMENT LAYOUT ABOVE

ELEV. 620'-6", UNITS 1 AND 2

FIGURE 8.3-3

(DWG. E-001-0033-00000)

Removed in Accordance with RIS 2015-17

(REV. 20 10/2017)

PERRY NUCLEAR POWER PLANT
10 CENTER RD., PERRY, OHIO 44081

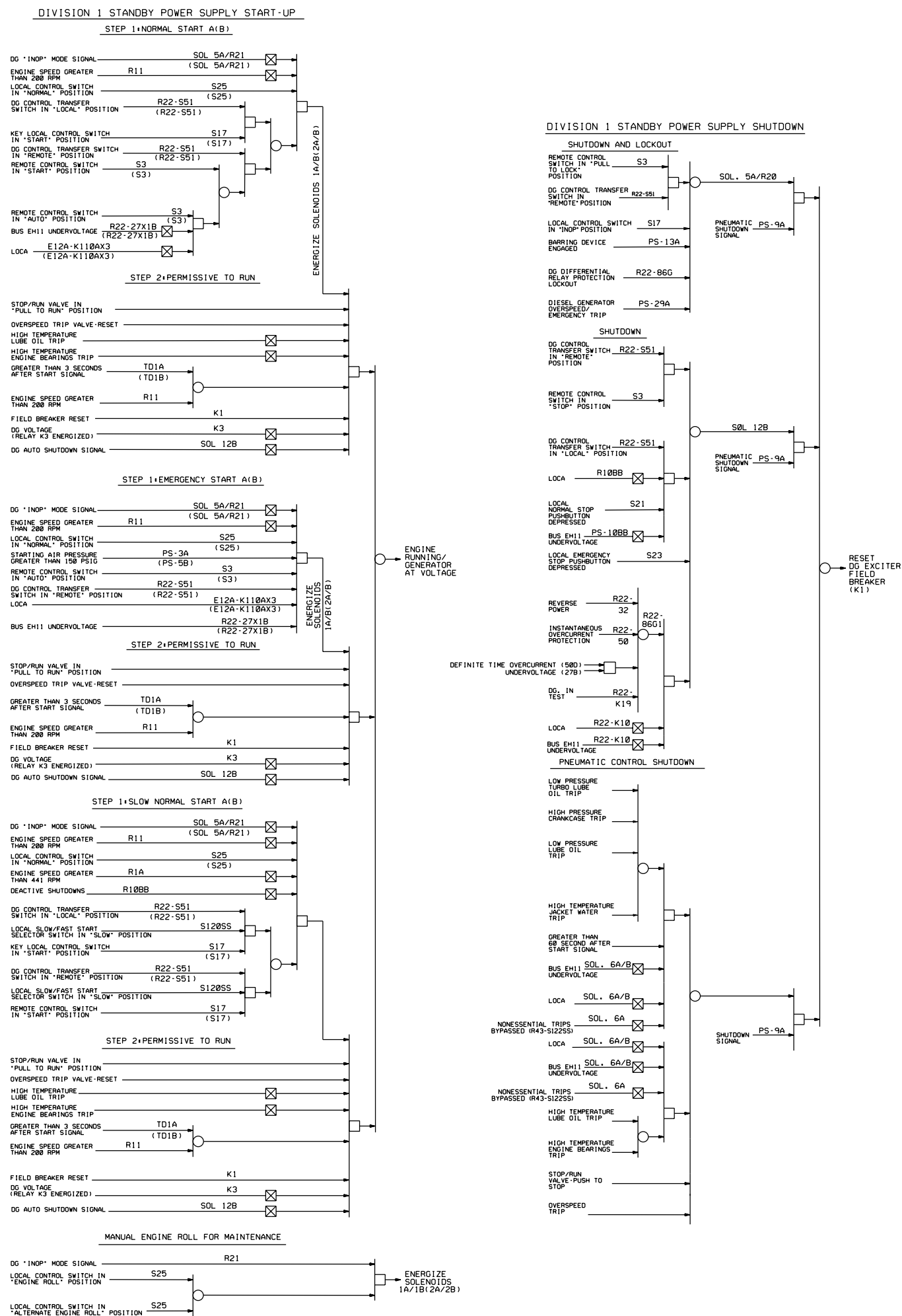
CONTROL COMPLEX EQUIPMENT LAYOUT
ABOVE ELEV. 628'-6", UNITS 1 AND 2
FIGURE 8.3-4
(DWG. E-001-0042-00000)

Removed in Accordance with RIS 2015-17

(REV. 20 10/2017)

PERRY NUCLEAR POWER PLANT
10 CENTER RD., PERRY, OHIO 44081

EMERGENCY SERVICE WATER PUMPHOUSE
EQUIPMENT LAYOUT ABOVE ELEV. 586'-6"
FIGURE 8.3-5
(DWG. E-015-0002-00000)



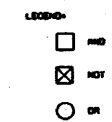
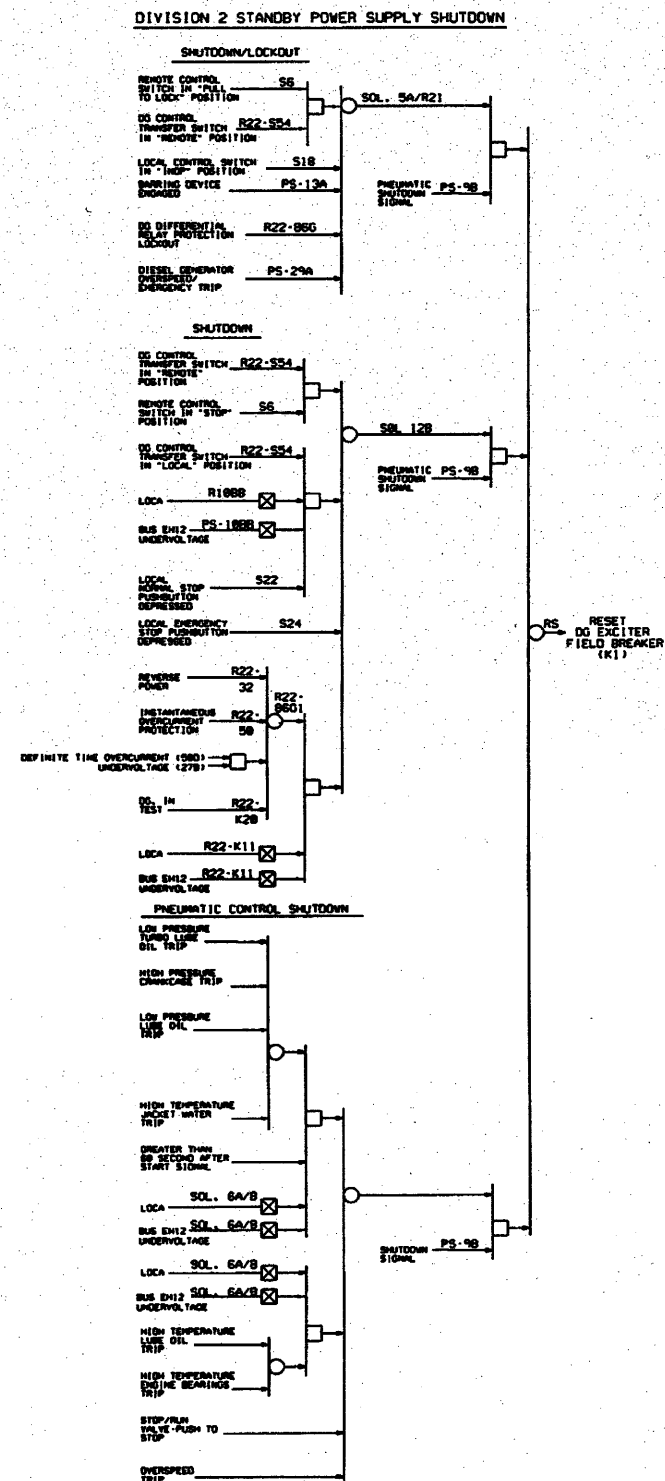
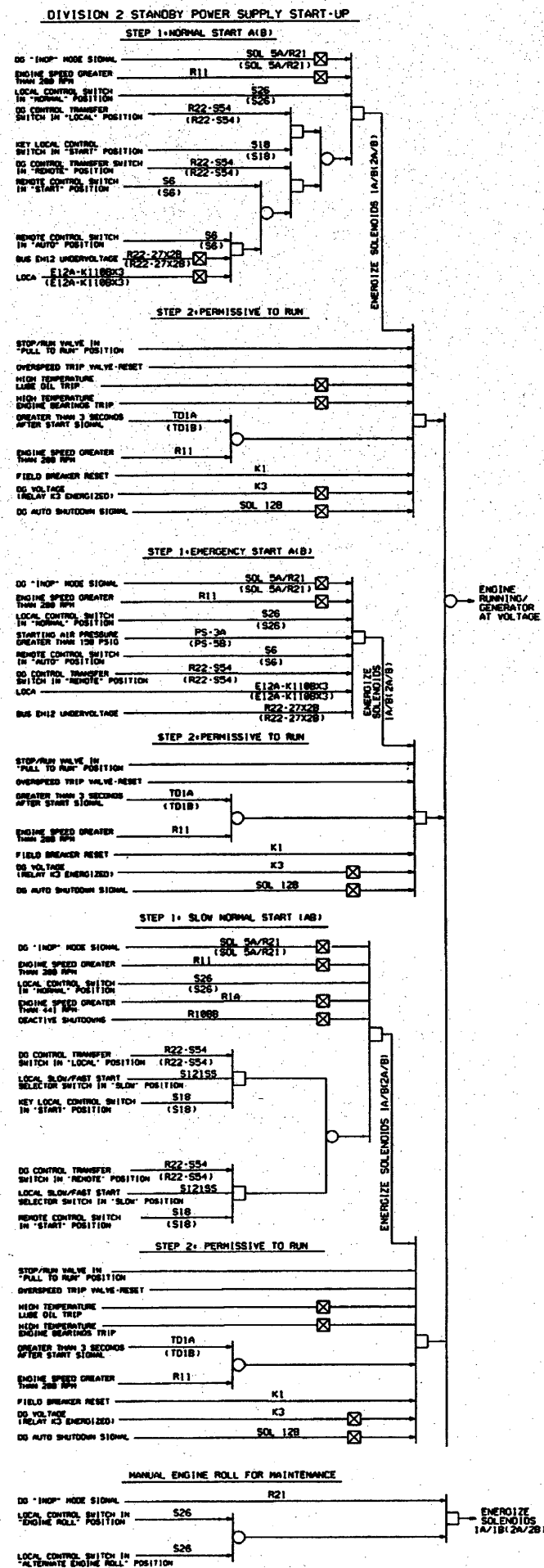
NUCLEAR SAFETY RELATED

(Rev.17 10/11)

PERRY NUCLEAR POWER PLANT
10 CENTER RD., PERRY, OHIO 44081

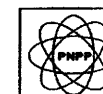
Diesel Logic Diagrams
Division 1

Figure 8.3-6 (Sheet 1 of 2)
(DWG. D-808-0317-00001)



NUCLEAR SAFETY RELATED

(Rev. 16 10/09)



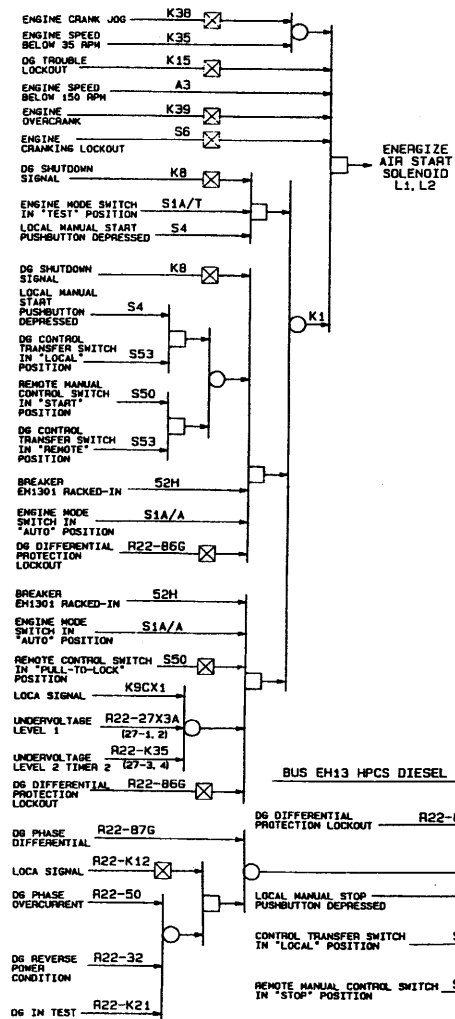
PERRY NUCLEAR POWER PLANT

Diesel Logic Diagrams,
Division 2

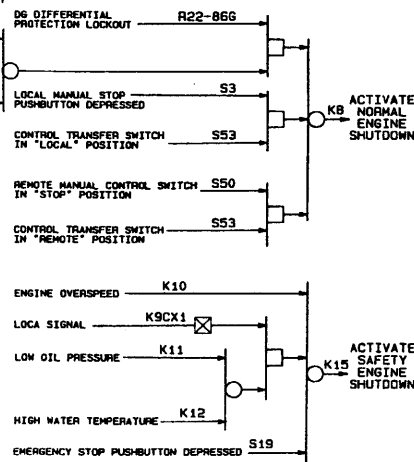
Figure 8.3-6 (Sheet 2 of 2)
[Dwg. D-808-317(2)]

Figure 8.3-7
(Dwg. D-206-018)

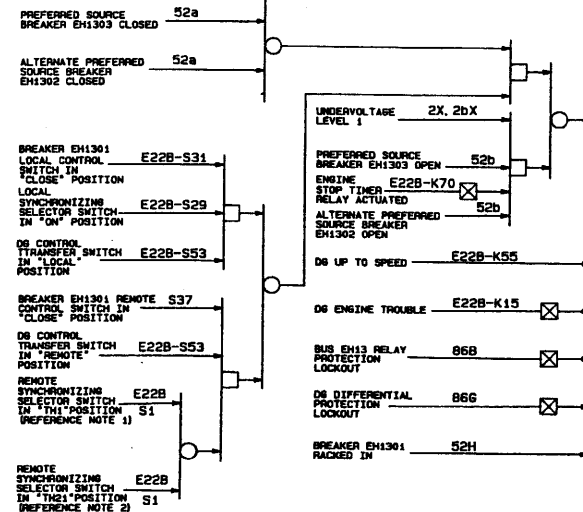
BUS EH13 HPCS DIESEL GENERATOR START LOGIC



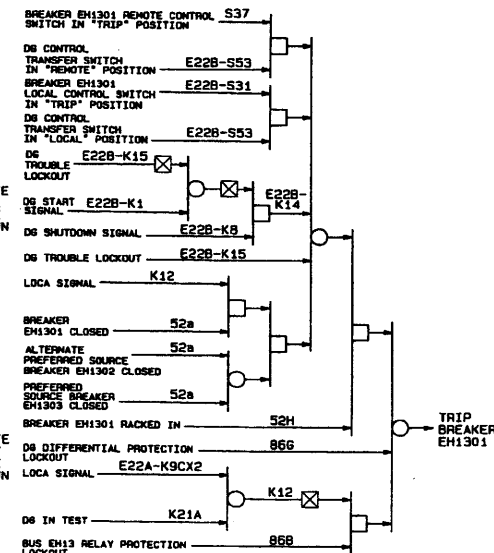
BUS EH13 HPCS DIESEL GENERATOR STOP LOGIC



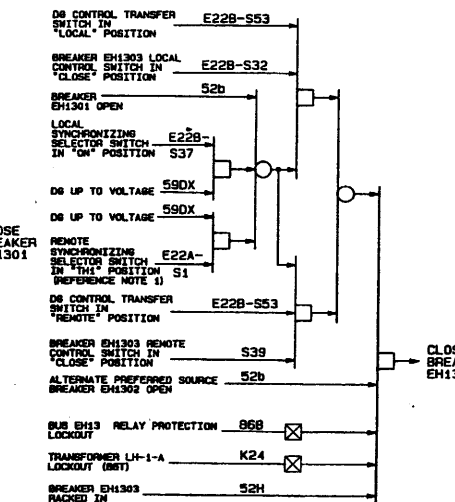
BUS EH13 DIESEL GENERATOR BREAKER EH1301 CLOSE LOGIC



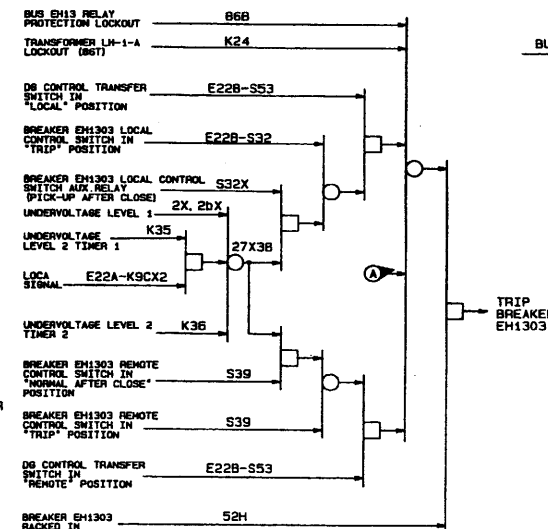
BUS EH13 DIESEL GENERATOR BREAKER EH1301 TRIP LOGIC



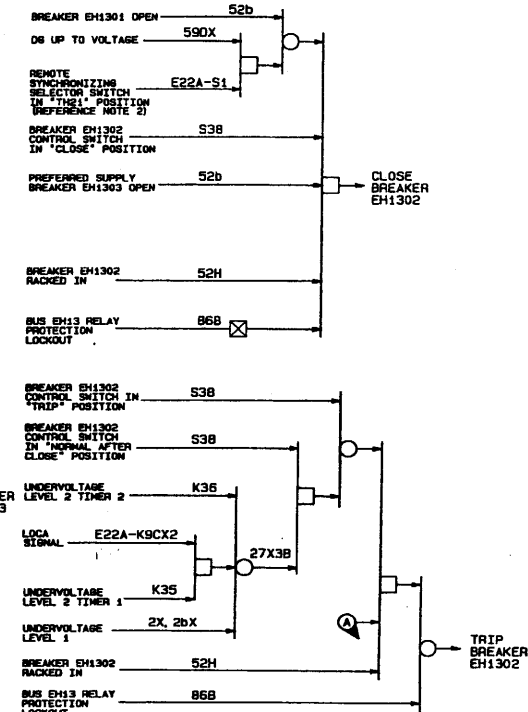
BUS EH13 PREFERRED SUPPLY BREAKER EH1303 CLOSE LOGIC



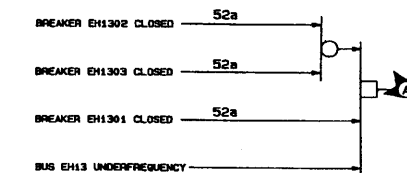
BUS EH13 PREFERRED SUPPLY BREAKER EH1303 TRIP LOGIC



BUS EH13 ALTERNATE PREFERRED SUPPLY BREAKER EH1302 CLOSE AND TRIP LOGIC



BUS EH13 DIESEL GENERATOR LOAD TEST OVERLOAD PROTECTION

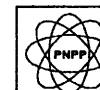


NOTES:
 1. TH1 IS THE CABLE BUS CONNECTING THE UNIT 1 CLASS 1E HW BUSES TO NORMAL OFF-SITE POWER VIA UNIT 1 INTERBUS TRANSFORMER LH-1-A.
 2. TH21 IS THE CABLE BUS CONNECTING THE UNIT 1 CLASS 1E HW BUSES TO OFF-SITE POWER VIA UNIT 2 INTERBUS TRANSFORMER LH-2-A.

LEGEND:
 AND
 NOT
 OR

(Rev. 12 1/03)

NUCLEAR SAFETY RELATED



PERRY NUCLEAR POWER PLANT

HPCS Diesel, Diesel Breakers,
 Alternate Preferred Supply
 Breakers Logic Diagram,
 (Division 3)
 Figure 8.3-8
 [Dwg. D-808-311(4)]

The diagram illustrates the 52A busbar system and its connections to various electrical components. The busbar is labeled 52A and is shown in a closed state. It is connected to the following components:

- 52A** (52A) - The main busbar.
- 52A** (52A) - A second busbar connection.
- 52A** (52A) - A third busbar connection.
- 52A** (52A) - A fourth busbar connection.
- 52A** (52A) - A fifth busbar connection.
- 52A** (52A) - A sixth busbar connection.
- 52A** (52A) - A seventh busbar connection.
- 52A** (52A) - An eighth busbar connection.
- 52A** (52A) - A ninth busbar connection.
- 52A** (52A) - A tenth busbar connection.
- 52A** (52A) - An eleventh busbar connection.
- 52A** (52A) - A twelfth busbar connection.
- 52A** (52A) - A thirteenth busbar connection.
- 52A** (52A) - A fourteenth busbar connection.
- 52A** (52A) - A fifteenth busbar connection.
- 52A** (52A) - A sixteenth busbar connection.
- 52A** (52A) - A seventeenth busbar connection.
- 52A** (52A) - An eighteenth busbar connection.
- 52A** (52A) - A nineteenth busbar connection.
- 52A** (52A) - A twentieth busbar connection.
- 52A** (52A) - A twenty-first busbar connection.
- 52A** (52A) - A twenty-second busbar connection.
- 52A** (52A) - A twenty-third busbar connection.
- 52A** (52A) - A twenty-fourth busbar connection.
- 52A** (52A) - A twenty-fifth busbar connection.
- 52A** (52A) - A twenty-sixth busbar connection.
- 52A** (52A) - A twenty-seventh busbar connection.
- 52A** (52A) - A twenty-eighth busbar connection.
- 52A** (52A) - A twenty-ninth busbar connection.
- 52A** (52A) - A thirtieth busbar connection.
- 52A** (52A) - A thirty-first busbar connection.
- 52A** (52A) - A thirty-second busbar connection.
- 52A** (52A) - A thirty-third busbar connection.
- 52A** (52A) - A thirty-fourth busbar connection.
- 52A** (52A) - A thirty-fifth busbar connection.
- 52A** (52A) - A thirty-sixth busbar connection.
- 52A** (52A) - A thirty-seventh busbar connection.
- 52A** (52A) - A thirty-eighth busbar connection.
- 52A** (52A) - A thirty-ninth busbar connection.
- 52A** (52A) - A fortieth busbar connection.
- 52A** (52A) - A forty-first busbar connection.
- 52A** (52A) - A forty-second busbar connection.
- 52A** (52A) - A forty-third busbar connection.
- 52A** (52A) - A forty-fourth busbar connection.
- 52A** (52A) - A forty-fifth busbar connection.
- 52A** (52A) - A forty-sixth busbar connection.
- 52A** (52A) - A forty-seventh busbar connection.
- 52A** (52A) - A forty-eighth busbar connection.
- 52A** (52A) - A forty-ninth busbar connection.
- 52A** (52A) - A fiftieth busbar connection.
- 52A** (52A) - A fifty-first busbar connection.
- 52A** (52A) - A fifty-second busbar connection.
- 52A** (52A) - A fifty-third busbar connection.
- 52A** (52A) - A fifty-fourth busbar connection.
- 52A** (52A) - A fifty-fifth busbar connection.
- 52A** (52A) - A fifty-sixth busbar connection.
- 52A** (52A) - A fifty-seventh busbar connection.
- 52A** (52A) - A fifty-eighth busbar connection.
- 52A** (52A) - A fifty-ninth busbar connection.
- 52A** (52A) - A sixtieth busbar connection.
- 52A** (52A) - A sixty-first busbar connection.
- 52A** (52A) - A sixty-second busbar connection.
- 52A** (52A) - A sixty-third busbar connection.
- 52A** (52A) - A sixty-fourth busbar connection.
- 52A** (52A) - A sixty-fifth busbar connection.
- 52A** (52A) - A sixty-sixth busbar connection.
- 52A** (52A) - A sixty-seventh busbar connection.
- 52A** (52A) - A sixty-eighth busbar connection.
- 52A** (52A) - A sixty-ninth busbar connection.
- 52A** (52A) - A seventieth busbar connection.
- 52A** (52A) - A seventy-first busbar connection.
- 52A** (52A) - A seventy-second busbar connection.
- 52A** (52A) - A seventy-third busbar connection.
- 52A** (52A) - A seventy-fourth busbar connection.
- 52A** (52A) - A seventy-fifth busbar connection.
- 52A** (52A) - A seventy-sixth busbar connection.
- 52A** (52A) - A seventy-seventh busbar connection.
- 52A** (52A) - A seventy-eighth busbar connection.
- 52A** (52A) - A seventy-ninth busbar connection.
- 52A** (52A) - An eightieth busbar connection.
- 52A** (52A) - An eighty-first busbar connection.
- 52A** (52A) - An eighty-second busbar connection.
- 52A** (52A) - An eighty-third busbar connection.
- 52A** (52A) - An eighty-fourth busbar connection.
- 52A** (52A) - An eighty-fifth busbar connection.
- 52A** (52A) - An eighty-sixth busbar connection.
- 52A** (52A) - An eighty-seventh busbar connection.
- 52A** (52A) - An eighty-eighth busbar connection.
- 52A** (52A) - An eighty-ninth busbar connection.
- 52A** (52A) - A ninetieth busbar connection.
- 52A** (52A) - A ninety-first busbar connection.
- 52A** (52A) - A ninety-second busbar connection.
- 52A** (52A) - A ninety-third busbar connection.
- 52A** (52A) - A ninety-fourth busbar connection.
- 52A** (52A) - A ninety-fifth busbar connection.
- 52A** (52A) - A ninety-sixth busbar connection.
- 52A** (52A) - A ninety-seventh busbar connection.
- 52A** (52A) - A ninety-eighth busbar connection.
- 52A** (52A) - A ninety-ninth busbar connection.
- 52A** (52A) - A one hundred busbar connection.

Diagram illustrating the TRIP BREAKER EH1182 (EH1201) control and protection inputs:

- BREAKER EH1182 (EH1201) REMOTE CONTROL SWITCH IN "TRIP" POSITION (S38) → S24 (S38)
- DC CONTROL TRANSFER SWITCH IN "REMOTE" POSITION (S51) → S51 (S54)
- BREAKER EH1182 (EH1201) LOCAL CONTROL SWITCH IN "TRIP" POSITION (S41) → S41 (S44)
- DC CONTROL TRANSFER SWITCH IN "LOCAL" POSITION (S51) → S51 (S54)
- DG IN TEST (K19a, K19b) → K19a (K20A), K19b (K11)
- LOCAL SIGNAL (E12A-K110AX3, E12A-K110BX3) → K11
- BREAKER EH1182 (EH1201) CLOSED (52A) → 52A (52A)
- PREFERRED SOURCE BREAKER EH1114 (EH1212) CLOSED (52A) → 52A (52A)
- ALTERNATE PREFERRED SOURCE BREAKER EH1115 (EH1213) CLOSED (52A) → 52A (52A)
- BREAKER EH1182 (EH1201) RACKED IN (52H) → 52H (52H)
- NON-ESSENTIAL MECHANICAL TRIP (PS-9B/K25 (R43-RS/K26)) → PS-9B/K25 (R43-RS/K26)
- DG DIFFERENTIAL PROTECTION LOCKOUT (86G) → 86G (86G)
- EH111 (EH12) BUS FAULT LOCKOUT (86B) → 86B (86B)
- DG OVERCURRENT PROTECTION LOCKOUT (86G1) → 86G1 (86G1)
- LOCAL SIGNAL (K18) → K18 (K11)
- BUS UNDERVOLTAGE (K18) → K18 (K11)

The TRIP BREAKER EH1182 (EH1201) is the output of the logic.

DIESEL BREAKER EH1182 (EH1201)

OPEN (528)

DC CONTROL TRANSFER SWITCH IN "LOCAL" POSITION (S51) (S54)

EH1114 (EH1212) LOCAL CONTROL SWITCH IN "CLOSE" POSITION (S42) (S45)

DC CONTROL TRANSFER SWITCH IN "REMOTE" POSITION (S51) (S54)

EH1114 (EH1212) REMOTE CONTROL SWITCH IN "CLOSE" POSITION (S27) (S33)

LOCAL SYNCHRONIZING SELECTOR SWITCH IN "SOURCE" POSITION (S51) (S54) (R43-S1) (R43-S20) (S42) (S45) (S51) (S54)

REMOTE SYNCHRONIZING SELECTOR SWITCH IN "SW1" ("TR") POSITION (REFERENCE NOTE 2) (R43-S1) (R43-S2) (S27) (S33)

DIESEL UP TO VOLTAGE (590X) (590X)

ALTERNATE PREFERRED SUPPLY BREAKER EH1115 (EH1213) OPEN (528) (528)

INTERBUS TRANSFORMER LK1-A (LK2-A) LOCKOUT (S61) (K22) (K23)

BUS EH11 (EH12) RELAY PROTECTION LOCKOUT (868) (868)

BREAKER EH1114 RACKED IN (524) (524)

CLOSE BREAKER EH1114 (EH1212)

The logic diagram for the TRIP BREAKER EH1114 (EH1212) shows the following components and connections:

- Inputs:**
 - DO CONTROL TRANSFER SWITCH IN "LOCAL" POSITION (S51, S54)
 - EH1114(EH1212) LOCAL CONTROL SWITCH IN "TRIP" POSITION (S42, S45)
 - EH1114(EH1212) LOCAL CONTROL SWITCH IN "NORMAL AFTER CLOSE" POSITION (S42, S45)
 - UNDERVOLTAGE LEVEL 1 (2X.2BX) (K27, K31)
 - UNDERVOLTAGE LEVEL 2 TIMER 1 (E12A-K110AXB) (E12A-K110AXB)
 - LOCA SIGNAL (K28)
 - UNDERVOLTAGE LEVEL 2 TIMER 2 (K31)
 - DO CONTROL TRANSFER SWITCH IN "REMOTE" POSITION (S51, S54)
 - EH1114(EH1212) REMOTE CONTROL SWITCH IN "TRIP" POSITION (S27, S33)
 - EH1114(EH1212) REMOTE CONTROL SWITCH IN "NORMAL AFTER CLOSE" POSITION (S27, S33)
 - TRANSFORMER LM-1-A (LM-2-A) LOCKOUT (BST) (K22, K23)
 - BUS EH1114(EH1212) RELAY PROTECTION LOCKOUT (B68, B68)
 - BREAKER EH1114(EH1212) RACKED IN (S2H, S2H)
- Internal Logic:**
 - Logic involving relays K27, K31, K28, K22, K23, and B68.
 - Logic involving timers E12A-K110AXB.
 - Logic involving switches S51, S54, S42, S45, S27, S33, and S2H.
 - Logic involving a "SEE NOTE 5" callout.
- Output:**
 - TRIP BREAKER EH1114 (EH1212)

DIESEL BREAKER EH1182 (EH1201) OPEN 528 (528)

DIESEL UP TO VOLTAGE 590X (590X)

REMOTE SYNCHRONIZING SELECTOR SWITCH IN "TH21" ("TH12") POSITION (REFERENCE NOTE 3) R43-S1 (R43-S2)

BREAKER EH1115 (EH1213) CONTROL SWITCH IN "CLOSE" POSITION S28 (S34)

BREAKER EH1114 (EH1212) OPEN 528 (528)

BUS EH11 (EH12) RELAY PROTECTION LOCKOUT 86B (86B)

BREAKER EH1115 (EH1213) RACKED IN 52H (52H)

CLOSE BREAKER EH1115 (EH1213)

Diagram illustrating the TRIP BREAKER (EH1115) (EH1213) PHASE OVERCURRENT (REFERENCE NOTE 4).

Inputs and Connections:

- BREAKER EH1115 (EH1213) CONTROL SWITCH - NORMAL AFTER CLOSE POSITION - 2 CONTACTS: S2B (S34)
- UNDERVOLTAGE LEVEL 1: 2X, 26X (2X, 26X)
- UNDERVOLTAGE LEVEL 2 TIMER 1: K27 (K31)
- LOCA SIGNAL: E12A-K110AXB (E12A-K110BXB)
- UNDERVOLTAGE LEVEL 2 TIMER 2: K28 (K32)
- BREAKER EH1115 (EH1213) CONTROL SWITCH IN - TRIP POSITION: S2B (S34)
- BREAKER EH1115 (EH1213) LOCKED-IN: S2H (S2H)
- BUS (EH1) (EH12) RELAY PROTECTION LOCKOUT: S6B (S6B)

Internal Connections and Outputs:

- 27X18 (27X26)
- SEE NOTE 5
- TRIP BREAKER (EH1115) (EH1213)

Diagram illustrating the control system for Breaker EH1116 (EH1214). The system includes a control switch and a racking mechanism, both connected to a common bus, which then connects to the Breaker EH1116 (EH1214).

- Breaker EH1116 (EH1214) CONTROL SWITCH IN "CLOSE" POSITION (S29 (S35))
- Breaker EH1116 (EH1214) RACKED IN (52H (52H))
- CLOSE BREAKER EH1116 (EH1214)

The diagram shows the following connections for Breaker EH1116:

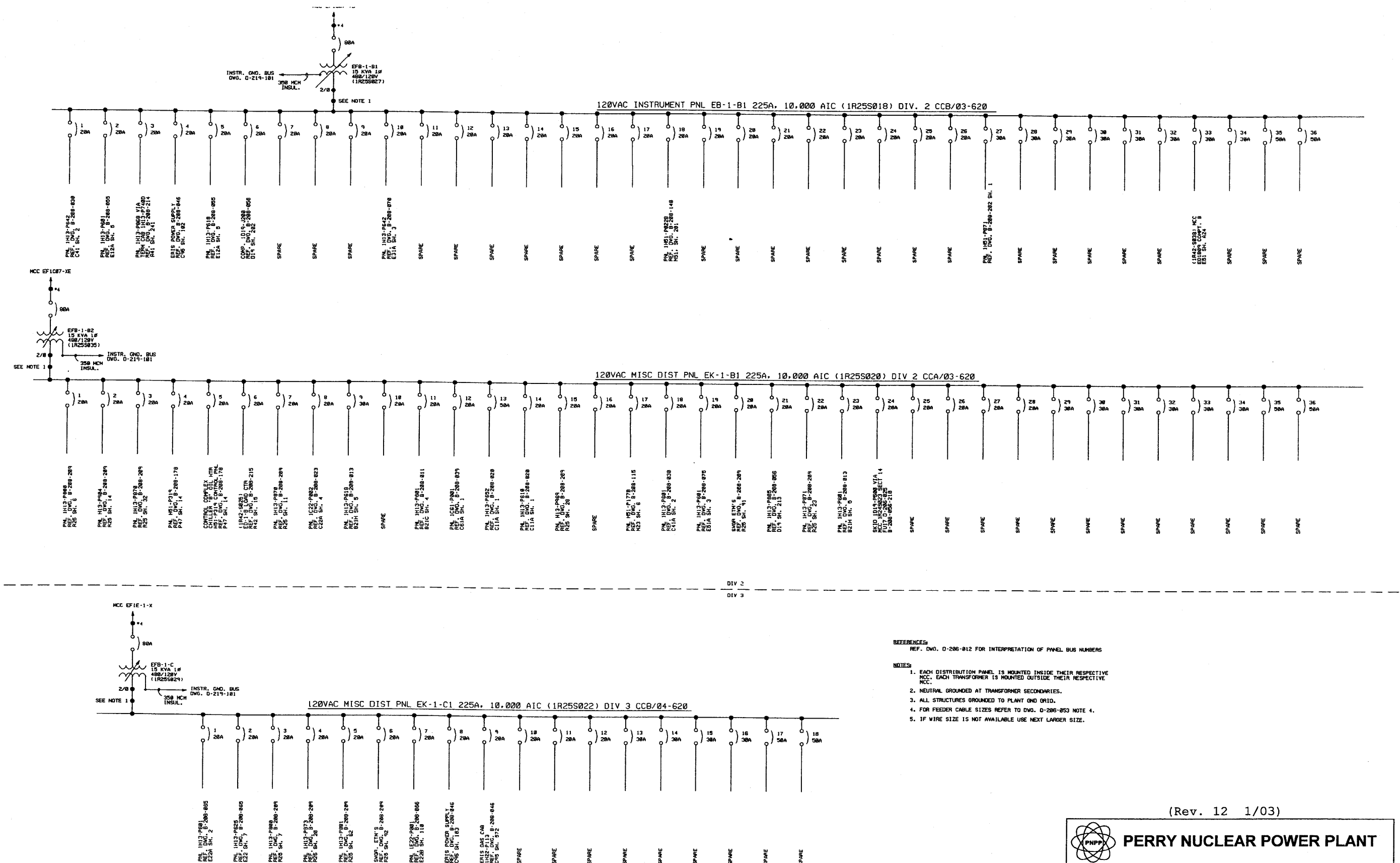
- Control:** Breaker EH1116 (EH1214) CONTROL SWITCH IN (S29) is connected to a terminal block.
- Bypass:** Breaker EH1116 (EH1214) BYPASS SWITCH IN (R22-S) is connected to a terminal block.
- Local Signal:** LOCAL SIGNAL (E12A-K110AX3) and (E12A-K110BX3) are connected to a terminal block.
- Interlocking:** Breaker EH1116 (EH1214) INTERLOCK IN (S2H) is connected to a terminal block.
- Phase Overcurrent:** BUS EH1116(EH12) PHASE OVERCURRENT (51) is connected to a terminal block.
- Neutral Overcurrent:** BUS EH1116(EH12) NEUTRAL OVERCURRENT (51N) is connected to a terminal block.
- Output:** The terminal blocks are connected to a common bus, which is then connected to the TRIP BREAKER EH1116 (EH1214) through a relay.

1. BREAKER CLOSE AND TRIP LOGIC FOR REDUNDANT BUS ENH1 IS IDENTICAL TO THE LOGIC FOR BUS ENH1 AND IS SHOWN IN PARENTHESES.
2. TH1 IS THE CABLE BUS CONNECTING THE UNIT 1 CLASS 1E 4 KV BUSES TO NORMAL OFF-SITE POWER VIA UNIT 1 INTERBUS TRANSFORMER LH-1-A.
3. TH21 IS THE CABLE BUS CONNECTING THE UNIT 1 CLASS 1E 4 KV BUSES TO OFF-SITE POWER VIA UNIT 2 INTERBUS TRANSFORMER LH-2-A.
4. TH12 IS THE CABLE BUS CONNECTING THE UNIT 2 CLASS 1E 4 KV BUSES TO OFF-SITE POWER VIA UNIT 1 INTERBUS TRANSFORMER LH-1-A.
5. LOAD TEST OVERLOAD PROTECTION FOR BUS ENH1 ONLY.

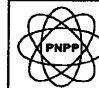
☐ AND
☒ NOT
☐ OR



Diesel Breaker, Preferred,
Alternate Preferred and
Stub Bus Logic Diagram,
Division 1, (Division 2)
Figure 8.3-9
[Dwg. D-808-317(3)]



(Rev. 12 1/03)


PERRY NUCLEAR POWER PLANT

One Line Diagram, Class 1E,
 120 Volt AC, Divisions 2 and 3

Figure 8.3-13
 (Dwg. D-206-054)

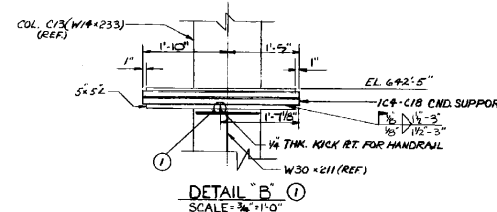
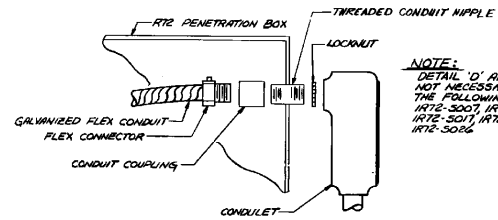
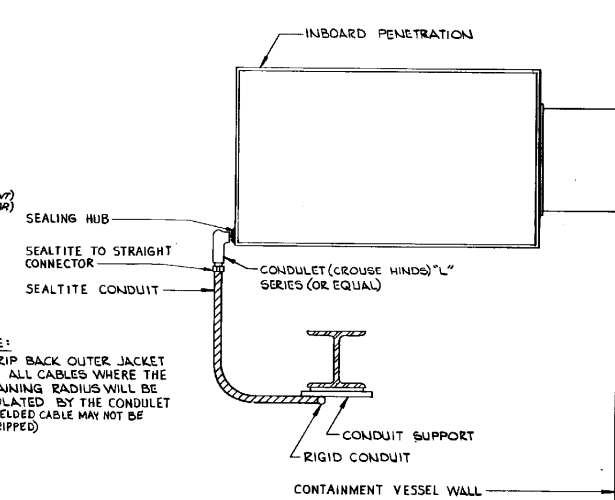
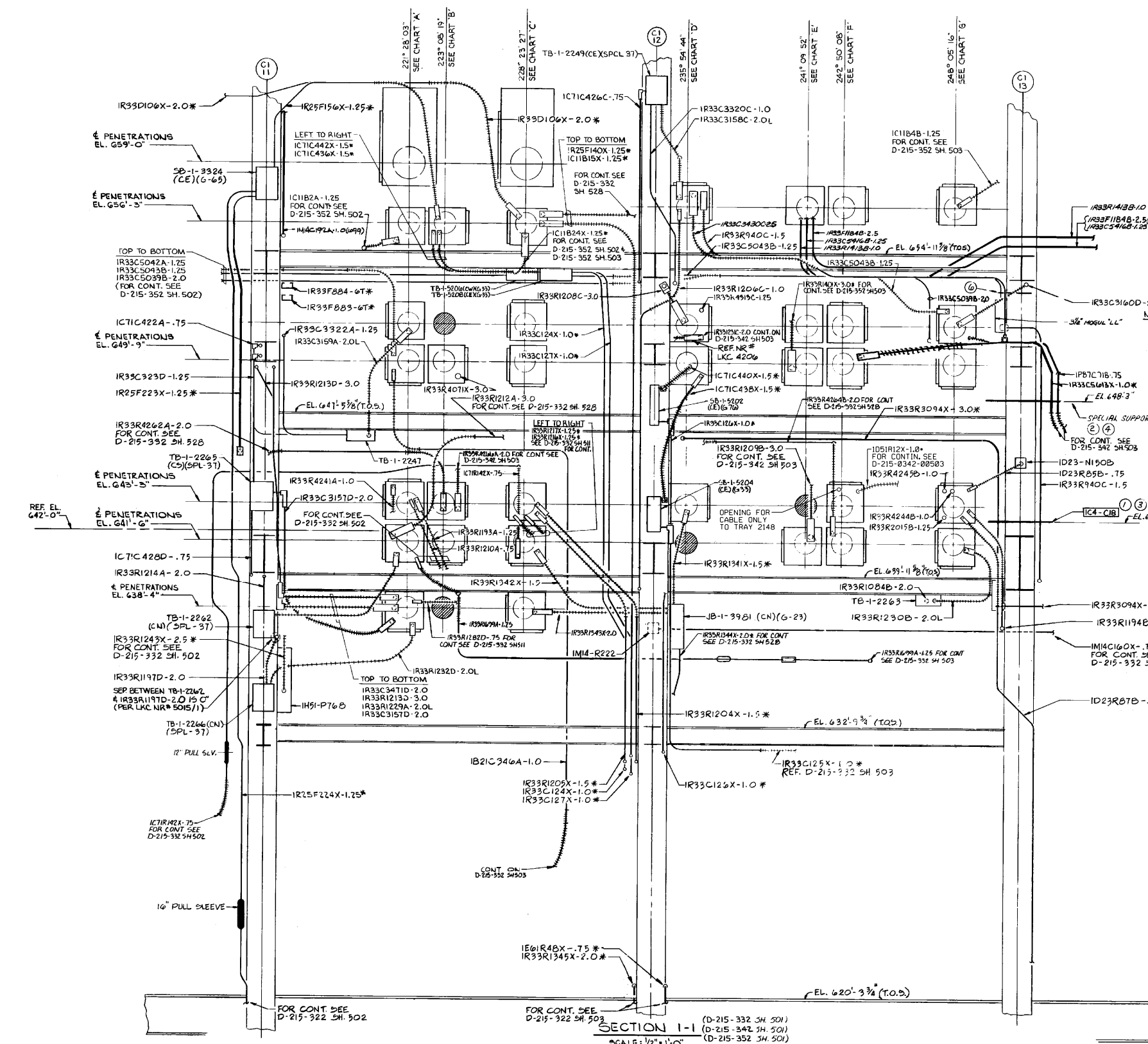
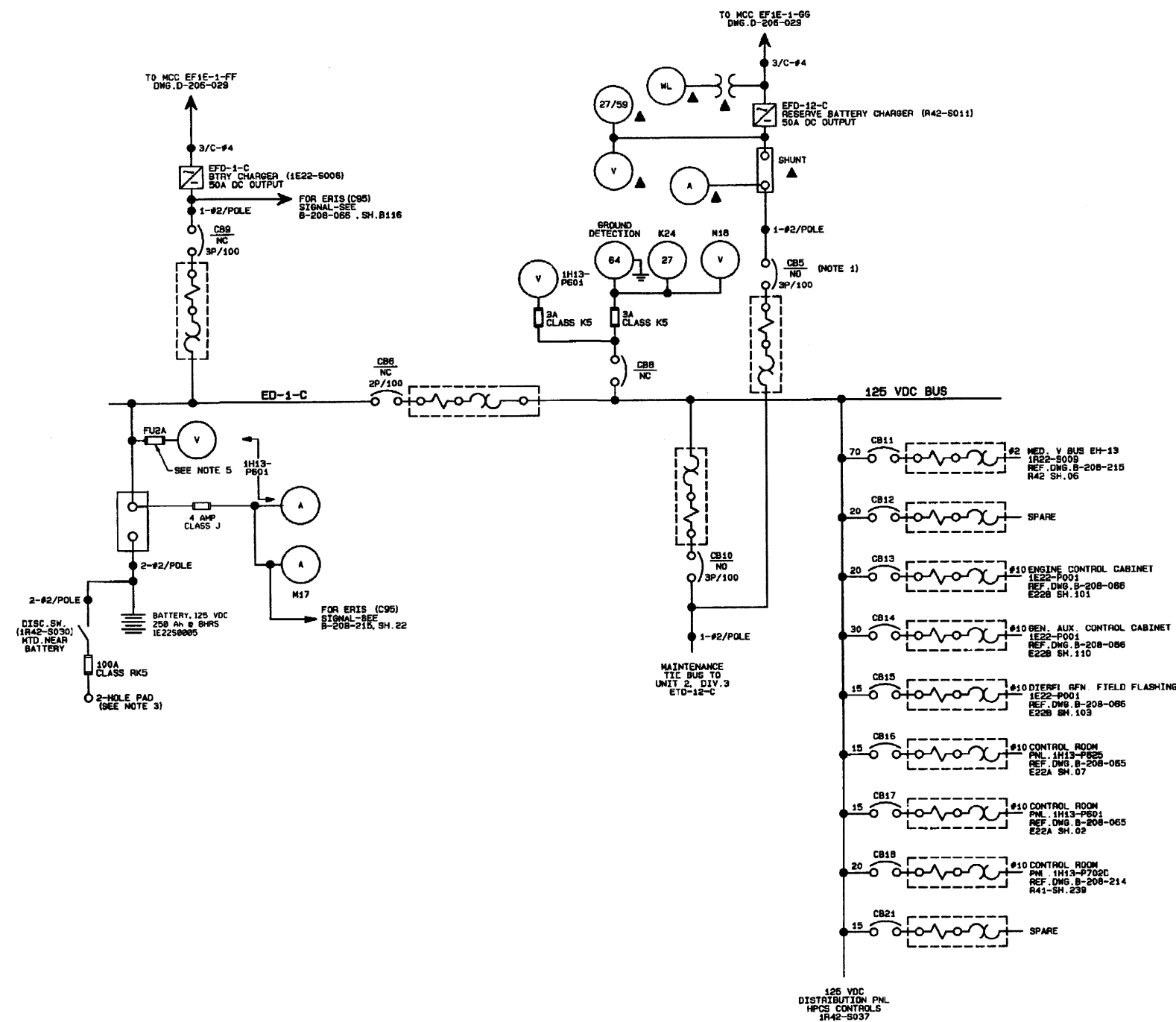


CHART 'A' TOP TO BOT.	CHART 'B' TOP TO BOT.	CHART 'C' TOP TO BOT.	CHART 'D' TOP TO BOT.	CHART 'E' TOP TO BOT.	CHART 'F' TOP TO BOT.	CHART 'G' TOP TO BOT.
ERB5008 IR72-5001	ERB5002 IR72-5029	ERB5010 IR72-5002	ERB5004 IR72-5011	ERB5005 IR72-5032	ERB5006 IR72-5006	ERB5007 IR72-5004
ERB5001 IR72-5003	ERB4019 SPARE	ERB5003 IR72-5005	ERB5002 IR72-5012	ERB4022 IR72-5038	ERB4023 IR72-5014	ERB5009 IR72-5009
ERB4018 IR72-5007	ERB4010 IR72-5031	ERB4020 IR72-5012	ERB4021 IR72-5025	ERB4013 IR72-5036	ERB4014 IR72-5015	ERB4024 IR72-5014
ERB4009 IR72-5008	ERB4002 IR72-5030	ERB4011 IR72-5018	ERB4012 IR72-5033	ERB4005 SPARE	ERB4006 IR72-5022	ERB4015 IR72-5010
ERB4001 IR72-5016	ERB3004 IR72-5028	ERB4003 IR72-5018	ERB4004 IR72-5024	ERB3007 IR72-5021	ERB4007 IR72-5020	ERB4007 IR72-5020
ERB3003 IR72-5017	ERB3002 SPARE	ERB3005 IR72-5019	ERB3006 SPARE		ERB3008 IR72-5035	ERB3009 IR72-5023
ERB3001 IR72-5026		ERB3000 IR72-5027				

VARIANCES

- ATTACH B52B STRUT TO CONDUIT SUPPORT IC4-C18 PER DETAIL 'B'. STRUT IS TO EXTEND 1" MAX. PAST THE EDGE OF IC4-C18 ON BOTH SIDES
- ATTACH AN ELECTRICAL CONDUIT SUPPORT IDENTICAL TO IC4-C18 TO COLUMN C1-13 (W/4-213) AND ATTACH B52B STRUT THE ENTIRE LENGTH OF SUPPORT PLUS 1" MAX. PAST BOTH ENDS
- ALLOW CND. IR33R940C-1.5 AND IR33R940X-3.0 TO ATTACH TO IC4-C18
- ALLOW CND. N/5 IR33R940C-1.5, IPB7C71B-7.5 & IR33C5613X-1.0 TO ATTACH TO SUPPORT (REF. VARIANCE 2)
- SPARE
- ALLOW DETAIL 'D' THAT SUPPORTS CND. IR33R940C-1.5 TO ATTACH TO COLUMN
- ALLOW IR33R940C-1.5 TO BE MOUNTED ON STRUT TO SEC. C1-11, 11A, 11B, 11C, 11D, 11E, 11F, 11G, 11H, 11I, 11J, 11K, 11L, 11M, 11N, 11O, 11P, 11Q, 11R, 11S, 11T, 11U, 11V, 11W, 11X, 11Y, 11Z, 12A, 12B, 12C, 12D, 12E, 12F, 12G, 12H, 12I, 12J, 12K, 12L, 12M, 12N, 12O, 12P, 12Q, 12R, 12S, 12T, 12U, 12V, 12W, 12X, 12Y, 12Z, 13A, 13B, 13C, 13D, 13E, 13F, 13G, 13H, 13I, 13J, 13K, 13L, 13M, 13N, 13O, 13P, 13Q, 13R, 13S, 13T, 13U, 13V, 13W, 13X, 13Y, 13Z, 14A, 14B, 14C, 14D, 14E, 14F, 14G, 14H, 14I, 14J, 14K, 14L, 14M, 14N, 14O, 14P, 14Q, 14R, 14S, 14T, 14U, 14V, 14W, 14X, 14Y, 14Z, 15A, 15B, 15C, 15D, 15E, 15F, 15G, 15H, 15I, 15J, 15K, 15L, 15M, 15N, 15O, 15P, 15Q, 15R, 15S, 15T, 15U, 15V, 15W, 15X, 15Y, 15Z, 16A, 16B, 16C, 16D, 16E, 16F, 16G, 16H, 16I, 16J, 16K, 16L, 16M, 16N, 16O, 16P, 16Q, 16R, 16S, 16T, 16U, 16V, 16W, 16X, 16Y, 16Z, 17A, 17B, 17C, 17D, 17E, 17F, 17G, 17H, 17I, 17J, 17K, 17L, 17M, 17N, 17O, 17P, 17Q, 17R, 17S, 17T, 17U, 17V, 17W, 17X, 17Y, 17Z, 18A, 18B, 18C, 18D, 18E, 18F, 18G, 18H, 18I, 18J, 18K, 18L, 18M, 18N, 18O, 18P, 18Q, 18R, 18S, 18T, 18U, 18V, 18W, 18X, 18Y, 18Z, 19A, 19B, 19C, 19D, 19E, 19F, 19G, 19H, 19I, 19J, 19K, 19L, 19M, 19N, 19O, 19P, 19Q, 19R, 19S, 19T, 19U, 19V, 19W, 19X, 19Y, 19Z, 20A, 20B, 20C, 20D, 20E, 20F, 20G, 20H, 20I, 20J, 20K, 20L, 20M, 20N, 20O, 20P, 20Q, 20R, 20S, 20T, 20U, 20V, 20W, 20X, 20Y, 20Z, 21A, 21B, 21C, 21D, 21E, 21F, 21G, 21H, 21I, 21J, 21K, 21L, 21M, 21N, 21O, 21P, 21Q, 21R, 21S, 21T, 21U, 21V, 21W, 21X, 21Y, 21Z, 22A, 22B, 22C, 22D, 22E, 22F, 22G, 22H, 22I, 22J, 22K, 22L, 22M, 22N, 22O, 22P, 22Q, 22R, 22S, 22T, 22U, 22V, 22W, 22X, 22Y, 22Z, 23A, 23B, 23C, 23D, 23E, 23F, 23G, 23H, 23I, 23J, 23K, 23L, 23M, 23N, 23O, 23P, 23Q, 23R, 23S, 23T, 23U, 23V, 23W, 23X, 23Y, 23Z, 24A, 24B, 24C, 24D, 24E, 24F, 24G, 24H, 24I, 24J, 24K, 24L, 24M, 24N, 24O, 24P, 24Q, 24R, 24S, 24T, 24U, 24V, 24W, 24X, 24Y, 24Z, 25A, 25B, 25C, 25D, 25E, 25F, 25G, 25H, 25I, 25J, 25K, 25L, 25M, 25N, 25O, 25P, 25Q, 25R, 25S, 25T, 25U, 25V, 25W, 25X, 25Y, 25Z, 26A, 26B, 26C, 26D, 26E, 26F, 26G, 26H, 26I, 26J, 26K, 26L, 26M, 26N, 26O, 26P, 26Q, 26R, 26S, 26T, 26U, 26V, 26W, 26X, 26Y, 26Z, 27A, 27B, 27C, 27D, 27E, 27F, 27G, 27H, 27I, 27J, 27K, 27L, 27M, 27N, 27O, 27P, 27Q, 27R, 27S, 27T, 27U, 27V, 27W, 27X, 27Y, 27Z, 28A, 28B, 28C, 28D, 28E, 28F, 28G, 28H, 28I, 28J, 28K, 28L, 28M, 28N, 28O, 28P, 28Q, 28R, 28S, 28T, 28U, 28V, 28W, 28X, 28Y, 28Z, 29A, 29B, 29C, 29D, 29E, 29F, 29G, 29H, 29I, 29J, 29K, 29L, 29M, 29N, 29O, 29P, 29Q, 29R, 29S, 29T, 29U, 29V, 29W, 29X, 29Y, 29Z, 30A, 30B, 30C, 30D, 30E, 30F, 30G, 30H, 30I, 30J, 30K, 30L, 30M, 30N, 30O, 30P, 30Q, 30R, 30S, 30T, 30U, 30V, 30W, 30X, 30Y, 30Z, 31A, 31B, 31C, 31D, 31E, 31F, 31G, 31H, 31I, 31J, 31K, 31L, 31M, 31N, 31O, 31P, 31Q, 31R, 31S, 31T, 31U, 31V, 31W, 31X, 31Y, 31Z, 32A, 32B, 32C, 32D, 32E, 32F, 32G, 32H, 32I, 32J, 32K, 32L, 32M, 32N, 32O, 32P, 32Q, 32R, 32S, 32T, 32U, 32V, 32W, 32X, 32Y, 32Z, 33A, 33B, 33C, 33D, 33E, 33F, 33G, 33H, 33I, 33J, 33K, 33L, 33M, 33N, 33O, 33P, 33Q, 33R, 33S, 33T, 33U, 33V, 33W, 33X, 33Y, 33Z, 34A, 34B, 34C, 34D, 34E, 34F, 34G, 34H, 34I, 34J, 34K, 34L, 34M, 34N, 34O, 34P, 34Q, 34R, 34S, 34T, 34U, 34V, 34W, 34X, 34Y, 34Z, 35A, 35B, 35C, 35D, 35E, 35F, 35G, 35H, 35I, 35J, 35K, 35L, 35M, 35N, 35O, 35P, 35Q, 35R, 35S, 35T, 35U, 35V, 35W, 35X, 35Y, 35Z, 36A, 36B, 36C, 36D, 36E, 36F, 36G, 36H, 36I, 36J, 36K, 36L, 36M, 36N, 36O, 36P, 36Q, 36R, 36S, 36T, 36U, 36V, 36W, 36X, 36Y, 36Z, 37A, 37B, 37C, 37D, 37E, 37F, 37G, 37H, 37I, 37J, 37K, 37L, 37M, 37N, 37O, 37P, 37Q, 37R, 37S, 37T, 37U, 37V, 37W, 37X, 37Y, 37Z, 38A, 38B, 38C, 38D, 38E, 38F, 38G, 38H, 38I, 38J, 38K, 38L, 38M, 38N, 38O, 38P, 38Q, 38R, 38S, 38T, 38U, 38V, 38W, 38X, 38Y, 38Z, 39A, 39B, 39C, 39D, 39E, 39F, 39G, 39H, 39I, 39J, 39K, 39L, 39M, 39N, 39O, 39P, 39Q, 39R, 39S, 39T, 39U, 39V, 39W, 39X, 39Y, 39Z, 40A, 40B, 40C, 40D, 40E, 40F, 40G, 40H, 40I, 40J, 40K, 40L, 40M, 40N, 40O, 40P, 40Q, 40R, 40S, 40T, 40U, 40V, 40W, 40X, 40Y, 40Z, 41A, 41B, 41C, 41D, 41E, 41F, 41G, 41H, 41I, 41J, 41K, 41L, 41M, 41N, 41O, 41P, 41Q, 41R, 41S, 41T, 41U, 41V, 41W, 41X, 41Y, 41Z, 42A, 42B, 42C, 42D, 42E, 42F, 42G, 42H, 42I, 42J, 42K, 42L, 42M, 42N, 42O, 42P, 42Q, 42R, 42S, 42T, 42U, 42V, 42W, 42X, 42Y, 42Z, 43A, 43B, 43C, 43D, 43E, 43F, 43G, 43H, 43I, 43J, 43K, 43L, 43M, 43N, 43O, 43P, 43Q, 43R, 43S, 43T, 43U, 43V, 43W, 43X, 43Y, 43Z, 44A, 44B, 44C, 44D, 44E, 44F, 44G, 44H, 44I, 44J, 44K, 44L, 44M, 44N, 44O, 44P, 44Q, 44R, 44S, 44T, 44U, 44V, 44W, 44X, 44Y, 44Z, 45A, 45B, 45C, 45D, 45E, 45F, 45G, 45H, 45I, 45J, 45K, 45L, 45M, 45N, 45O, 45P, 45Q, 45R, 45S, 45T, 45U, 45V, 45W, 45X, 45Y, 45Z, 46A, 46B, 46C, 46D, 46E, 46F, 46G, 46H, 46I, 46J, 46K, 46L, 46M, 46N, 46O, 46P, 46Q, 46R, 46S, 46T, 46U, 46V, 46W, 46X, 46Y, 46Z, 47A, 47B, 47C, 47D, 47E, 47F, 47G, 47H, 47I, 47J, 47K, 47L, 47M, 47N, 47O, 47P, 47Q, 47R, 47S, 47T, 47U, 47V, 47W, 47X, 47Y, 47Z, 48A, 48B, 48C, 48D, 48E, 48F, 48G, 48H, 48I, 48J, 48K, 48L, 48M, 48N, 48O, 48P, 48Q, 48R, 48S, 48T, 48U, 48V, 48W, 48X, 48Y, 48Z, 49A, 49B, 49C, 49D, 49E, 49F, 49G, 49H, 49I, 49J, 49K, 49L, 49M, 49N, 49O, 49P, 49Q, 49R, 49S, 49T, 49U, 49V, 49W, 49X, 49Y, 49Z, 50A, 50B, 50C, 50D, 50E, 50F, 50G, 50H, 50I, 50J, 50K, 50L, 50M, 50N, 50O, 50P, 50Q, 50R, 50S, 50T, 50U, 50V, 50W, 50X, 50Y, 50Z, 51A, 51B, 51C, 51D, 51E, 51F, 51G, 51H, 51I, 51J, 51K, 51L, 51M, 51N, 51O, 51P, 51Q, 51R, 51S, 51T, 51U, 51V, 51W, 51X, 51Y, 51Z, 52A, 52B, 52C, 52D, 52E, 52F, 52G, 52H, 52I, 52J, 52K, 52L, 52M, 52N, 52O, 52P, 52Q, 52R, 52S, 52T, 52U, 52V, 52W, 52X, 52Y, 52Z, 53A, 53B, 53C, 53D, 53E, 53F, 53G, 53H, 53I, 53J, 53K, 53L, 53M, 53N, 53O, 53P, 53Q, 53R, 53S, 53T, 53U, 53V, 53W, 53X, 53Y, 53Z, 54A, 54B, 54C, 54D, 54E, 54F, 54G, 54H, 54I, 54J, 54K, 54L, 54M, 54N, 54O, 54P, 54Q, 54R, 54S, 54T, 54U, 54V, 54W, 54X, 54Y, 54Z, 55A, 55B, 55C, 55D, 55E, 55F, 55G, 55H, 55I, 55J, 55K, 55L, 55M, 55N, 55O, 55P, 55Q, 55R, 55S, 55T, 55U, 55V, 55W, 55X, 55Y, 55Z, 56A, 56B, 56C, 56D, 56E, 56F, 56G, 56H, 56I, 56J, 56K, 56L, 56M, 56N, 56O, 56P, 56Q, 56R, 56S, 56T, 56U, 56V, 56W, 56X, 56Y, 56Z, 57A, 57B, 57C, 57D, 57E, 57F, 57G, 57H, 57I, 57J, 57K, 57L, 57M, 57N, 57O, 57P, 57Q, 57R, 57S, 57T, 57U, 57V, 57W, 57X, 57Y, 57Z, 58A, 58B, 58C, 58D, 58E, 58F, 58G, 58H, 58I, 58J, 58K, 58L, 58M, 58N, 58O, 58P, 58Q, 58R, 58S, 58T, 58U, 58V, 58W, 58X, 58Y, 58Z, 59A, 59B, 59C, 59D, 59E, 59F, 59G, 59H, 59I, 59J, 59K, 59L, 59M, 59N, 59O, 59P, 59Q, 59R, 59S, 59T, 59U, 59V, 59W, 59X, 59Y, 59Z, 60A, 60B, 60C, 60D, 60E, 60F, 60G, 60H, 60I, 60J, 60K, 60L, 60M, 60N, 60O, 60P, 60Q, 60R, 60S, 60T, 60U, 60V, 60W, 60X, 60Y, 60Z, 61A, 61B, 61C, 61D, 61E, 61F, 61G, 61H, 61I, 61J, 61K, 61L, 61M, 61N, 61O, 61P, 61Q, 61R, 61S, 61T, 61U, 61V, 61W, 61X, 61Y, 61Z, 62A, 62B, 62C, 62D, 62E, 62F, 62G, 62H, 62I, 62J, 62K, 62L, 62M, 62N, 62O, 62P, 62Q, 62R, 62S, 62T, 62U, 62V, 62W, 62X, 62Y, 62Z, 63A, 63B, 63C, 63D, 63E, 63F, 63G, 63H, 63I, 63J, 63K, 63L, 63M, 63N, 63O, 63P, 63Q, 63R, 63S, 63T, 63U, 63V, 63W, 63X, 63Y, 63Z, 64A, 64B, 64C, 64D, 64E, 64F, 64G, 64H, 64I, 64J, 64K, 64L, 64M, 64N, 64O, 64P, 64Q, 64R, 64S, 64T, 64U, 64V, 64W, 64X, 64Y, 64Z, 65A, 65B, 65C, 65D, 65E, 65F, 65G, 65H, 65I, 65J, 65K, 65L, 65M, 65N, 65O, 65P, 65Q, 65R, 65S, 65T, 65U, 65V, 65W, 65X, 65Y, 65Z, 66A, 66B, 66C, 66D, 66E, 66F, 66G, 66H, 66I, 66J, 66K, 66L, 66M, 66N, 66O, 66P, 66Q, 66R, 66S, 66T, 66U, 66V, 66W, 66X, 66Y, 66Z, 67A, 67B, 67C, 67D, 67E, 67F, 67G, 67H, 67I, 67J, 67K, 67L, 67M, 67N, 67O, 67P, 67Q, 67R, 67S, 67T, 67U, 67V, 67W, 67X, 67Y, 67Z, 68A, 68B, 68C, 68D, 68E, 68F, 68G, 68H, 68I, 68J, 68K, 68L, 68M, 68N, 68O, 68P, 68Q, 68R, 68S, 68T, 68U, 68V, 68W, 68X, 68Y, 68Z, 69A, 69B, 69C, 69D, 69E, 69F, 69G, 69H, 69I, 69J, 69K, 69L, 69M, 69N, 69O, 69P, 69Q, 69R, 69S, 69T, 69U, 69V, 69W, 69X, 69Y, 69Z, 70A, 70B, 70C, 70D, 70E, 70F, 70G, 70H, 70I, 70J, 70K, 70L, 70M, 70N, 70O, 70P, 70Q, 70R, 70S, 70T, 70U, 70V, 70W, 70X, 70Y, 70Z, 71A, 71B, 71C, 71D, 71E, 71F, 71G, 71H, 71I, 71J, 71K, 71L, 71M, 71N, 71O, 71P, 71Q, 71R, 71S, 71T, 71U, 71V, 71W, 71X, 71Y, 71Z, 72A, 72B, 72C, 72D, 72E, 72F, 72G, 72H, 72I, 72J, 72K, 72L, 72M, 72N, 72O, 72P, 72Q, 72R, 72S, 72T, 72U, 72V, 72W, 72X, 72Y, 72Z, 73A, 73B, 73C, 73D, 73E, 73F, 73G, 73H, 73I, 73J, 73K, 73L, 73M, 73N, 73O, 73P, 73Q, 73R, 73S, 73T, 73U, 73V, 73W, 73X, 73Y, 73Z, 74A, 74B, 74C, 74D, 74E, 74F, 74G, 74H, 74I, 74J, 74K, 74L, 74M, 74N, 74O, 74P, 74Q, 74R, 74S, 74T, 74U, 74V, 74W, 74X, 74Y, 74Z, 75A, 75B, 75C, 75D, 75E, 75F, 75G, 75H, 75I, 75J, 75K, 75L, 75M, 75N, 75O, 75P, 75Q, 75R, 75S, 75T, 75U, 75V, 75W, 75X, 75Y, 75Z, 76A, 76B, 76C, 76D, 76E, 76F, 76G, 76H, 76I, 76J, 76K, 76L, 76M, 76N, 76O, 76P, 76Q, 76R, 76S, 76T, 76U, 76V, 76W, 76X, 76Y, 76Z, 77A, 77B, 77C, 77D, 77E, 77F, 77G, 77H, 77I, 77J, 77K, 77L, 77M, 77N, 77O, 77P, 77Q, 77R, 77S, 77T, 77U, 77V, 77W, 77X, 77Y, 77Z, 78A, 78B, 78C, 78D, 78E, 78F, 78G, 78H, 78I, 78J, 78K, 78L, 78M, 78N, 78O, 78P, 78Q, 78R, 78S, 78T, 78U, 78V, 78W, 78X, 78Y, 78Z, 79A, 79B, 79C, 79D, 79E, 79F, 79G, 79H, 79I, 79J, 79K, 79L, 79M, 79N, 79O, 79P, 79Q, 79R, 79S, 79T, 79U, 79V, 79W, 79X, 79Y, 79Z, 80A, 80B, 80C, 80D, 80E, 80F, 80G, 80H, 80I, 80J, 80K, 80L, 80M, 80N, 80O, 80P, 80Q, 80R, 80S, 80T, 80U, 80V, 80W, 80X, 80Y, 80Z, 81A, 81B, 81C, 81D, 81E, 81F, 81G, 81H, 81I, 81J, 81K, 81L, 81M, 81N, 81O, 81P, 81Q, 81R, 81S, 81T, 81U, 81V, 81W, 81X, 81Y, 81Z, 82A, 82B, 82C, 82D, 82E, 82F, 82G, 82H, 82I, 82J, 82K, 82L, 82M, 82N, 82O, 82P, 82Q, 82R, 82S, 82T, 82U, 82V, 82W, 82X, 82Y, 82Z, 83A, 83B, 83C, 83D, 83E, 83F, 83G, 83H, 83I, 83J, 83K, 83L, 83M, 83N, 83O, 83P, 83Q, 83R, 83S, 83T, 83U, 83V, 83W, 83X, 83Y, 83Z, 84A, 84B, 84C, 84D, 84E, 84F, 84G, 84H, 84I, 84J, 84K, 84L, 84M, 84N, 84O, 84P, 84Q, 84R, 84S, 84T, 84U, 84V, 84W, 84X, 84Y, 84Z, 85A, 85B, 85C, 85D, 85E, 85F, 85G, 85H, 85I, 85J, 85K, 85L, 85M, 85N, 85O, 85P, 85Q, 85R, 85S, 85T, 85U, 85V, 85W, 85X, 85Y, 85Z, 86A, 86B, 86C, 86D, 86E, 86F, 86G, 86H, 86I, 86J, 86K, 86L, 86M, 86N, 86O, 86P, 86Q, 86R, 86S, 86T, 86U, 86V, 86W, 86X, 86Y, 86Z, 87A, 87B, 87C, 87D, 87E, 87F, 87G, 87H, 87I, 87J, 87K, 87L, 87M, 87N, 87O, 87P, 87Q, 87R, 87S, 87T, 87U, 87V, 87W, 87X, 87Y, 87Z, 88A, 88B, 88C, 88D, 88E, 88F, 88G, 88H, 88I, 88J, 88K, 88L, 88M, 88N, 88O, 88P, 88Q, 88R, 88S, 88T, 88U, 88V, 88W, 88X, 88Y, 88Z, 89A, 89B, 89C, 89D, 89E, 89F, 89G, 89H, 89I, 89J, 89



- NOTES:
1. CB5 BREAKER IS SUPPLIED ON GENERATOR UNIT NO.1 ONLY.
 2. FOR LEGEND AND ABBREVIATIONS, SEE DWG. D-206-012.
 3. REQUIRED FOR CONNECTION OF 500MCM CABLE FROM PORTABLE BATTERY CAPACITY TEST RIG.
 4. DEVICES LOCATED IN SWGR UNLESS OTHERWISE INDICATED
A. INDICATES DEVICES LOCATED IN BATTERY CHARGER
 5. GOULD SHAWMUT-FUSE MODEL OTM-2 OR EQUIVALENT.

REFERENCES:

B-211-208 SH.1	BLOCK DIAGRAM
B-211-065 SH.2 & 13	BLOCK DIAGRAM
B-211-066 SH.6 & 13	BLOCK DIAGRAM

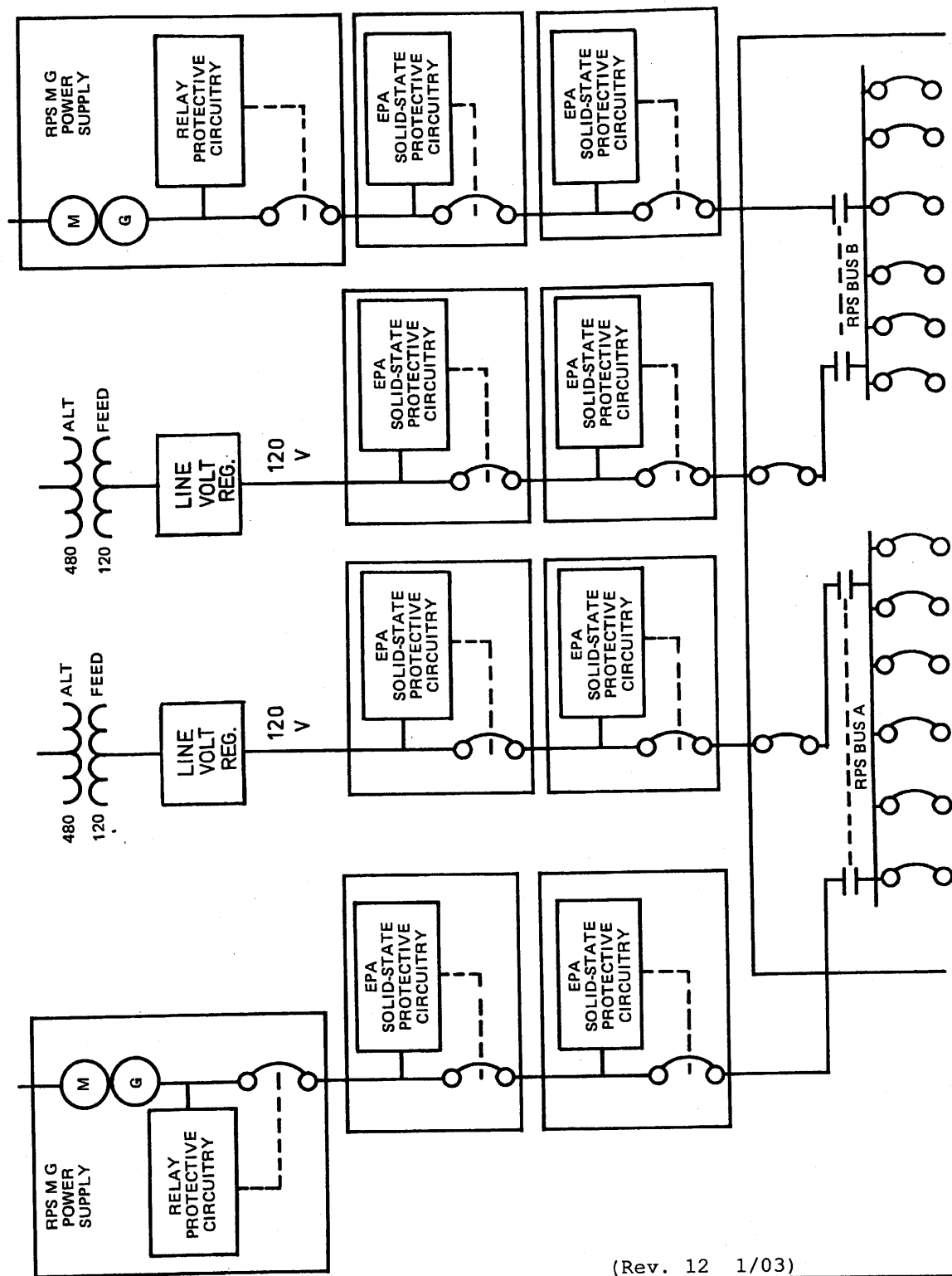
REFERENCES:

D-81381-22711CE STEWART & STEVENSON SERVICES

(REV. 19 10/2015)

PERRY NUCLEAR POWER PLANT
10 CENTER RD., PERRY, OHIO 44081

ONE LINE METER AND RELAY DIAGRAM,
CLASS 1E, 125 VOLT DC, DIVISION 3
FIGURE 8.3-22
(DWG. D-206-0050-00000)



(Rev. 12 1/03)



PERRY NUCLEAR POWER PLANT

Block Diagram - RPS Protective
Circuit Showing EPA Assemblies

Figure 8.3-23