

<p> N61 LOCAL PANEL AND RACK SYSTEM (NON-DE) * N51P002 PERMANENT POTABLE WATER CONTROL PANEL N51P005 MAIN CONDENSER CLEAN CONTROL PANEL * N51P006 SERVICE WATER SCREEN CONTROL PANEL N51P007 AUXILIARY CONDENSER CLEAN CONTROL PANEL N51P009 TURBINE PLANT SAMPLING ANALYZER PANEL * N51P010A EMERGENCY SERVICE WATER SCREEN CONTROL PANEL - A N51P010B EMERGENCY SERVICE WATER SCREEN CONTROL PANEL - B N51P012A INSTRUMENT CABINET - MOVABLE N51P012B INSTRUMENT CABINET - IMMOVABLE N51P012C INSTRUMENT CABINET - IMMOVABLE N51P013 CONDENSATE DEIONIZER/LEAK CONTROL PANEL N51P014 CONDENSATE FILTER CONTROL PANEL N51P015 CONDENSATE FILTER CONTROL PANEL N51P016 MAKEUP WATER PRETREATMENT CONTROL PANEL N51P017 MAKEUP WATER DEIONIZER/LEAK CONTROL PANEL N51P022A H₂ ANALYZER A VERTICAL PANEL N51P022B H₂ ANALYZER B VERTICAL PANEL * N51P027 SERVICE WATER CHLORINATION PANEL * N51P028 EMERGENCY SERVICE WATER CHLORINATION PANEL * N51P031A RADWASTE CONTROL PANEL * N51P031B RADWASTE CONTROL PANEL * N51P032 BULK HYDROGEN STORAGE GARGE PANEL N51P033 H₂ SYSTEM HVAC PANEL * N51P034 SODIUM HYPOCHLORITE GENERATION CONTROL PANEL * N51P035 DECOLORIZATION-CONTROL PANEL N51P037 PUMP ROOM COOLING HVAC CONTROL PANEL N51P038 EC COOLING SYSTEM AND ES H2O SYSTEM INSTRUMENT RACK N51P040 H2O SYSTEM HVAC PANEL N51P041 H2O SYSTEM HVAC PANEL N51P042 TURBINE BUILDING CHILLED WATER CONTROL PANEL N51P049 H2O SYSTEM VENTILATION FAN SC N51P051 SERVICE AIR COMPRESSOR CONTROL PANEL N51P052 COOLING TOWER CHLORINATION CONTROL PANEL N51P053 COOLING TOWER RESIDUAL CHLORINE ANALYZER PANEL N51P054 STANDBY DIESEL - ENGINE CONTROL PANEL N51P054B STANDBY DIESEL - ENGINE CONTROL PANEL N51P055A STANDBY DIESEL - GENERATOR CONTROL PANEL N51P055B STANDBY DIESEL - GENERATOR CONTROL PANEL * N51P057 INSTRUMENT AIR COMPRESSOR CONTROL PANEL N51P061 STEAM SEAL EVAPORATION CONTROL PANEL N51P062 STEAM SEAL CONTROL PANEL * N51P063 COOLING TOWER ACID ADDITION CONTROL PANEL N51P064 RADWASTE BUILDING VENTILATION EXHAUST RADIATION MONITOR N51P065 INTERMEDIATE BUILDING VENTILATION EXHAUST RADIATION MONITOR N51P066 FUEL HANDLING BUILDING VENTILATION EXHAUST RADIATION MONITOR N51P068 CONTROL ROOM AIRBORNE RADIATION MONITOR N51P070 CONTAINMENT EXHAUST RADIATION MONITOR N51P071 DRYWELL ATMOSPHERE RADIATION MONITOR N51P072 CONTAINMENT ATMOSPHERE RADIATION MONITOR N51P073 AMULUS EXHAUST TRIM "A" RADIATION MONITOR N51P074 AMULUS EXHAUST TRIM "B" RADIATION MONITOR N51P075A INTERBUS TRANSFORMER LM-1-A PROTECTION RELAY PANEL N51P075B INTERBUS TRANSFORMER LM-1-A PROTECTION RELAY PANEL N51P076C INTERBUS TRANSFORMER LM-1-A PROTECTION RELAY PANEL N51P077A EMERGENCY SERVICE WATER SCREEN CONTROL STATION A AND B N51P077B EMERGENCY SERVICE WATER SCREEN CONTROL STATION A AND B N51P078A SERVICE WATER SCREEN WASH CONTROL STATION A AND B N51P078B SERVICE WATER SCREEN WASH CONTROL STATION A AND B N51P084A RHM TUBE BUNDLE WATER REMOVAL PUMP N51P084B RHM TUBE BUNDLE WATER REMOVAL PUMP N51P085 OFF-GAS BUILDING VENTILATION EXHAUST RADIATION MONITOR N51P086 UNIT VENT 1 RADIATION MONITOR N51P075 AUXILIARY BUILDING VENTILATION EXHAUST RADIATION MONITOR N51P144 TERMINATION CABINET N51P081 MOISTURE SEPARATOR REHEATER CONTROL PANEL N51P082 SOLID RADWASTE DISPOSAL CONTROL PANEL * N51P084 POST LOCA HYDROGEN RECOMBINER A CONTROL PANEL * N51P085 POST LOCA HYDROGEN RECOMBINER B CONTROL PANEL * N51P086 INSTRUMENT AIR DRYER A CONTROL PANEL * N51P087 INSTRUMENT AIR DRYER B CONTROL PANEL N51P088 FEEDWATER AND REHEAT STEAM SYSTEM INSTRUMENT RACK N51P090 AUXILIARY MILLER CHEMICAL TREATING CONTROL PANEL * N51P091 DIESEL FINE PUMP CONTROL PANEL * N51P102 ELECTRIC FINE PUMP CONTROL PANEL N51P132 OFF-GAS VAULT SYSTEM REFRIGERATION PANEL N51P133A TRAVELING BELT FILTER CONTROL PANEL N51P133B TRAVELING BELT FILTER CONTROL PANEL N51P134A CONTAINMENT ATMOSPHERE MONITOR INSTRUMENT PANEL A N51P134B CONTAINMENT ATMOSPHERE MONITOR INSTRUMENT PANEL B N51P148 OFF-GAS VENT PIPE AIR SAMPLING PANEL N51P149 PLANT VENT AIR SAMPLING RACK N51P189 OFF-GAS VENT PIPE RADIATION MONITOR * N51P170 MAINTENANCE CALIBRATION PATCH PANEL N51P172 AUXILIARY BUILDING AND STEAM TUNNEL HVAC CONTROL PANEL N51P173 FUEL POOL FILTER DEIONIZER/LEAK CONTROL PANEL N51P175A CONDENSATE FILTER UNIT A INSTRUMENT RACK N51P175B CONDENSATE FILTER UNIT B INSTRUMENT RACK N51P175C CONDENSATE FILTER UNIT C INSTRUMENT RACK N51P175D CONDENSATE FILTER UNIT D INSTRUMENT RACK N51P175E CONDENSATE FILTER UNIT E INSTRUMENT RACK N51P175F CONDENSATE FILTER UNIT F INSTRUMENT RACK N51P175G CONDENSATE FILTER UNIT G INSTRUMENT RACK N51P175H CONDENSATE FILTER UNIT H INSTRUMENT RACK N51P175I CONDENSATE FILTER PRECAT TANK INSTRUMENT RACK N51P176 H₂ AND COOLING WATER CONTROL PANEL N51P177A H2O/DEA SYSTEM HVAC PANEL A N51P177B H2O/DEA SYSTEM HVAC PANEL B N51P178 EMERGENCY CLOSED COOLING SYSTEM INSTRUMENT RACK N51P179 MOISTURE SEPARATOR DRAIN TANK - B LEVEL INSTRUMENT RACK N51P180 MOISTURE SEPARATOR DRAIN TANK - A LEVEL INSTRUMENT RACK N51P181 DRAIN TANK - A - LEVEL CONTROL RACK N51P182 HOTWELL PUMPS PRESSURE TRANSMITTER RACK N51P183 TURBINE BULK CONDENSATE BOOSTER PUMPS A AND B LEVEL INSTR RACK N51P184 MOISTURE SEPARATOR DRAIN TANK - B - LEVEL INSTRUMENT RACK N51P185 TURBINE BUILDING CLOSED COOLING PUMP DISCHARGE INSTRUMENT RACK N51P186 MAIN STEAM LINES PRESSURE TRANSMITTER RACK N51P187 INSTRUMENTATION RACK N51P188 INSTRUMENTATION RACK * N51P189 INSTRUMENTATION RACK N51P190 INSTRUMENTATION RACK N51P191 INSTRUMENTATION RACK N51P192 INSTRUMENTATION RACK * N51P193 INSTRUMENTATION RACK N51P194 INSTRUMENTATION RACK N51P195 INSTRUMENTATION RACK * N51P196 FIRE PUMP CONTROLLER PANEL * N51P313 TURBINE BUILDING CHILLER CONTROL PANEL A * N51P314 TURBINE BUILDING CHILLER CONTROL PANEL B * N51P315 CONTAINMENT CHILLER A CONTROL PANEL * N51P316 CONTAINMENT CHILLER B CONTROL PANEL * N51P317 CONTAINMENT CHILLER C CONTROL PANEL * N51P318 CONTROL COMPLEX CHILLER A CONTROL PANEL * N51P319 CONTROL COMPLEX CHILLER B CONTROL PANEL * N51P320 CONTROL COMPLEX CHILLER C CONTROL PANEL * N51P321 OFF-GAS VAULT BRINE COOLING CONTROL PANEL A1 * N51P322 OFF-GAS VAULT BRINE COOLING CONTROL PANEL A2 * N51P323 OFF-GAS VAULT BRINE COOLING CONTROL PANEL B1 * N51P324 OFF-GAS VAULT BRINE COOLING CONTROL PANEL B2 * N51P325 OFF-GAS VAULT BRINE COOLING CONTROL PANEL C1 * N51P326 OFF-GAS VAULT BRINE COOLING CONTROL PANEL C2 * N51P328 TURBINE PLANT SAMPLE EXTRACTION PUMP CONTROL PANEL N51P329 HOT WATER HEATING SYSTEM CONTROL PANEL N51P350 MOISTURE SEPARATOR REHEATER A2 INSTRUMENT RACK N51P358 TURBINE BUILDING AND HEATER DAY VENT RADIATION MONITOR (D17K350) N51P367 TURBINE BUILDING AND HEATER DAY AUTO ISOKINETIC SAMPLE SINK </p>	<p> N51 LOCAL PANEL AND RACK SYSTEM (NON-DE) (CONTINUED) N51P359 DEIONIZER/LEAK CONTROL PANEL N51P360 EMERGENCY CLOSED COOLING WATER TEMPERATURE (MDI) STATION N51P362 PH SAMPLE - CHEMICAL WASTE TANKS - PANEL N51P363 FAN AND HEATER DIVISION 2 CONTROL STATION N51P367 AHA KEY CONTROL PANEL N51P400 KIM KEY CONTROL PANEL N51P403 GAS BOTTLE RACK N51P405 ERIS DAC VACUUM N51P422 LOCAL ERIS DAC N51P423 HESS AND WUP PIPE TEST CABINET N51P424 DWP PIPE TEST CABINET N51P425 REMOTE SHUTDOWN CSD SPDS ELECTRONIC CABINET N51P480A STANDBY DIESEL - SPEED CONTROL PANEL N51P480B STANDBY DIESEL - SPEED CONTROL PANEL N51P480C ADVR PHOCEUS CONTROL PANEL N51P480D ADVR SV FILTER CONTROL PANEL N51P480E ADVR SV FILTER INSTRUMENT RACK L51E001 CRANES HOISTS ETC L51E002 POLAR CRANE L51E003A TURBINE ROOM CRANE L51E003B TURBINE ROOM CRANE L51E005 FUEL HANDLING AREA CRANE * L51E006 EMERGENCY SERVICE WATER PUMP HOUSE CRANE * L51E008 CIRCULATING WATER PUMP HOUSE CRANE * L51E012 SERVICE WATER PUMP HOUSE CRANE N511 CONTAINMENT VESSEL COOLING SYSTEM N511000A AIR HANDLING UNIT N511000B AIR HANDLING UNIT N511000C AIR HANDLING UNIT N511000D AIR HANDLING UNIT N511000E AIR HANDLING UNIT N511000F AIR HANDLING UNIT N513 DRYWELL COOLING SYSTEM N5130001 SUPPLY PLENUM N5130002 SUPPLY PLENUM N5130003 SUPPLY PLENUM N513000A SUPPLY FAN N513000B SUPPLY FAN N513000C SUPPLY FAN N513000D SUPPLY FAN N513000E SUPPLY FAN N514 CONTAINMENT VESSEL & DRYWELL PURGE SYSTEM N5140001A PURGE SUPPLY PLENUM N5140001B PURGE SUPPLY PLENUM N5140001C C.V. SUPPLY FAN N5140001D C.V. SUPPLY FAN N5140002A EXHAUST FAN N5140002B EXHAUST FAN N5140001A EXHAUST PLENUM N5140001B EXHAUST PLENUM N5140001C EXHAUST PLENUM N5140001D EXHAUST PLENUM N5140001E EXHAUST PLENUM N5140001F EXHAUST PLENUM N516 AMULUS EXHAUST GAS TREATMENT SYSTEM N516001A FAN N516001B FAN N516001C PLENUM N516001D PLENUM N516001E PLENUM N516001F PLENUM N516001G PLENUM N516001H PLENUM N516001I PLENUM N516001J PLENUM N516001K PLENUM N516001L PLENUM N516001M PLENUM N516001N PLENUM N516001O PLENUM N516001P PLENUM N516001Q PLENUM N516001R PLENUM N516001S PLENUM N516001T PLENUM N516001U PLENUM N516001V PLENUM N516001W PLENUM N516001X PLENUM N516001Y PLENUM N516001Z PLENUM N516001AA PLENUM N516001AB PLENUM N516001AC PLENUM N516001AD PLENUM N516001AE PLENUM N516001AF PLENUM N516001AG PLENUM N516001AH PLENUM N516001AI PLENUM N516001AJ PLENUM N516001AK PLENUM N516001AL PLENUM N516001AM PLENUM N516001AN PLENUM N516001AO PLENUM N516001AP PLENUM N516001AQ PLENUM N516001AR PLENUM N516001AS PLENUM N516001AT PLENUM N516001AU PLENUM N516001AV PLENUM N516001AW PLENUM N516001AX PLENUM N516001AY PLENUM N516001AZ PLENUM N516001BA PLENUM N516001BB PLENUM N516001BC PLENUM N516001BD PLENUM N516001BE PLENUM N516001BF PLENUM N516001BG PLENUM N516001BH PLENUM N516001BI PLENUM N516001BJ PLENUM N516001BK PLENUM N516001BL PLENUM N516001BM PLENUM N516001BN PLENUM N516001BO PLENUM N516001BP PLENUM N516001BQ PLENUM N516001BR PLENUM N516001BS PLENUM N516001BT PLENUM N516001BU PLENUM N516001BV PLENUM N516001BW PLENUM N516001BX PLENUM N516001BY PLENUM N516001BZ PLENUM N516001CA PLENUM N516001CB PLENUM N516001CC PLENUM N516001CD PLENUM N516001CE PLENUM N516001CF PLENUM N516001CG PLENUM N516001CH PLENUM N516001CI PLENUM N516001CJ PLENUM N516001CK PLENUM N516001CL PLENUM N516001CM PLENUM N516001CN PLENUM N516001CO PLENUM N516001CP PLENUM N516001CQ PLENUM N516001CR PLENUM N516001CS PLENUM N516001CT PLENUM N516001CU PLENUM N516001CV PLENUM N516001CW PLENUM N516001CX PLENUM N516001CY PLENUM N516001CZ PLENUM N516001DA PLENUM N516001DB PLENUM N516001DC PLENUM N516001DD PLENUM N516001DE PLENUM N516001DF PLENUM N516001DG PLENUM N516001DH PLENUM N516001DI PLENUM N516001DJ PLENUM N516001DK PLENUM N516001DL PLENUM N516001DM PLENUM N516001DN PLENUM N516001DO PLENUM N516001DP PLENUM N516001DQ PLENUM N516001DR PLENUM N516001DS PLENUM N516001DT PLENUM N516001DU PLENUM N516001DV PLENUM N516001DW PLENUM N516001DX PLENUM N516001DY PLENUM N516001DZ PLENUM N516001EA PLENUM N516001EB PLENUM N516001EC PLENUM N516001ED PLENUM N516001EE PLENUM N516001EF PLENUM N516001EG PLENUM N516001EH PLENUM N516001EI PLENUM N516001EJ PLENUM N516001EK PLENUM N516001EL PLENUM N516001EM PLENUM N516001EN PLENUM N516001EO PLENUM N516001EP PLENUM N516001EQ PLENUM N516001ER PLENUM N516001ES PLENUM N516001ET PLENUM N516001EU PLENUM N516001EV PLENUM N516001EW PLENUM N516001EX PLENUM N516001EY PLENUM N516001EZ PLENUM N516001FA PLENUM N516001FB PLENUM N516001FC PLENUM N516001FD PLENUM N516001FE PLENUM N516001FG PLENUM N516001FH PLENUM N516001FI PLENUM N516001FJ PLENUM N516001FK PLENUM N516001FL PLENUM N516001FM PLENUM N516001FN PLENUM N516001FO PLENUM N516001FP PLENUM N516001FQ PLENUM N516001FR PLENUM N516001FS PLENUM N516001FT PLENUM N516001FU PLENUM N516001FV PLENUM N516001FW PLENUM N516001FX PLENUM N516001FY PLENUM N516001FZ PLENUM N516001GA PLENUM N516001GB PLENUM N516001GC PLENUM N516001GD PLENUM N516001GE PLENUM N516001GF PLENUM N516001GG PLENUM N516001GH PLENUM N516001GI PLENUM N516001GJ PLENUM N516001GK PLENUM N516001GL PLENUM N516001GM PLENUM N516001GN PLENUM N516001GO PLENUM N516001GP PLENUM N516001GQ PLENUM N516001GR PLENUM N516001GS PLENUM N516001GT PLENUM N516001GU PLENUM N516001GV PLENUM N516001GW PLENUM N516001GX PLENUM N516001GY PLENUM N516001GZ PLENUM N516001HA PLENUM N516001HB PLENUM N516001HC PLENUM N516001HD PLENUM N516001HE PLENUM N516001HF PLENUM N516001HG PLENUM N516001HH PLENUM N516001HI PLENUM N516001HJ PLENUM N516001HK PLENUM N516001HL PLENUM N516001HM PLENUM N516001HN PLENUM N516001HO PLENUM N516001HP PLENUM N516001HQ PLENUM N516001HR PLENUM N516001HS PLENUM N516001HT PLENUM N516001HU PLENUM N516001HV PLENUM N516001HW PLENUM N516001HX PLENUM N516001HY PLENUM N516001HZ PLENUM N516001IA PLENUM N516001IB PLENUM N516001IC PLENUM N516001ID PLENUM N516001IE PLENUM N516001IF PLENUM N516001IG PLENUM N516001IH PLENUM N516001II PLENUM N516001IJ PLENUM N516001IK PLENUM N516001IL PLENUM N516001IM PLENUM N516001IN PLENUM N516001IO PLENUM N516001IP PLENUM N516001IQ PLENUM N516001IR PLENUM N516001IS PLENUM N516001IT PLENUM N516001IU PLENUM N516001IV PLENUM N516001IW PLENUM N516001IX PLENUM N516001IY PLENUM N516001IZ PLENUM N516001JA PLENUM N516001JB PLENUM N516001JC PLENUM N516001JD PLENUM N516001JE PLENUM N516001JF PLENUM N516001JG PLENUM N516001JH PLENUM N516001JI PLENUM N516001JJ PLENUM N516001JK PLENUM N516001JL PLENUM N516001JM PLENUM N516001JN PLENUM N516001JO PLENUM N516001JP PLENUM N516001JQ PLENUM N516001JR PLENUM N516001JS PLENUM N516001JT PLENUM N516001JU PLENUM N516001JV PLENUM N516001JW PLENUM N516001JX PLENUM N516001JY PLENUM N516001JZ PLENUM N516001KA PLENUM N516001KB PLENUM N516001KC PLENUM N516001KD PLENUM N516001KE PLENUM N516001KF PLENUM N516001KG PLENUM N516001KH PLENUM N516001KI PLENUM N516001KJ PLENUM N516001KK PLENUM N516001KL PLENUM N516001KM PLENUM N516001KN PLENUM N516001KO PLENUM N516001KP PLENUM N516001KQ PLENUM N516001KR PLENUM N516001KS PLENUM N516001KT PLENUM N516001KU PLENUM N516001KV PLENUM N516001KW PLENUM N516001KX PLENUM N516001KY PLENUM N516001KZ PLENUM N516001LA PLENUM N516001LB PLENUM N516001LC PLENUM N516001LD PLENUM N516001LE PLENUM N516001LF PLENUM N516001LG PLENUM N516001LH PLENUM N516001LI PLENUM N516001LJ PLENUM N516001LK PLENUM N516001LL PLENUM N516001LM PLENUM N516001LN PLENUM N516001LO PLENUM N516001LP PLENUM N516001LQ PLENUM N516001LR PLENUM N516001LS PLENUM N516001LT PLENUM N516001LU PLENUM N516001LV PLENUM N516001LW PLENUM N516001LX PLENUM N516001LY PLENUM N516001LZ PLENUM N516001MA PLENUM N516001MB PLENUM N516001MC PLENUM N516001MD PLENUM N516001ME PLENUM N516001MF PLENUM N516001MG PLENUM N516001MH PLENUM N516001MI PLENUM N516001MJ PLENUM N516001MK PLENUM N516001ML PLENUM N516001MM PLENUM N516001MN PLENUM N516001MO PLENUM N516001MP PLENUM N516001MQ PLENUM N516001MR PLENUM N516001MS PLENUM N516001MT PLENUM N516001MU PLENUM N516001MV PLENUM N516001MW PLENUM N516001MX PLENUM N516001MY PLENUM N516001MZ PLENUM N516001NA PLENUM N516001NB PLENUM N516001NC PLENUM N516001ND PLENUM N516001NE PLENUM N516001NF PLENUM N516001NG PLENUM N516001NH PLENUM N516001NI PLENUM N516001NJ PLENUM N516001NK PLENUM N516001NL PLENUM N516001NM PLENUM N516001NN PLENUM N516001NO PLENUM N516001NP PLENUM N516001NQ PLENUM N516001NR PLENUM N516001NS PLENUM N516001NT PLENUM N516001NU PLENUM N516001NV PLENUM N516001NW PLENUM N516001NX PLENUM N516001NY PLENUM N516001NZ PLENUM N516001OA PLENUM N516001OB PLENUM N516001OC PLENUM N516001OD PLENUM N516001OE PLENUM N516001OF PLENUM N516001OG PLENUM N516001OH PLENUM N516001OI PLENUM N516001OJ PLENUM N516001OK PLENUM N516001OL PLENUM N516001OM PLENUM N516001ON PLENUM N516001OO PLENUM N516001OP PLENUM N516001OQ PLENUM N516001OR PLENUM N516001OS PLENUM N516001OT PLENUM N516001OU PLENUM N516001OV PLENUM N516001OW PLENUM N516001OX PLENUM N516001OY PLENUM N516001OZ PLENUM N516001PA PLENUM N516001PB PLENUM N516001PC PLENUM N516001PD PLENUM N516001PE PLENUM N516001PF PLENUM N516001PG PLENUM N516001PH PLENUM N516001PI PLENUM N516001PJ PLENUM N516001PK PLENUM N516001PL PLENUM N516001PM PLENUM N516001PN PLENUM N516001PO PLENUM N516001PP PLENUM N516001PQ PLENUM N516001PR PLENUM N516001PS PLENUM N516001PT PLENUM N516001PU PLENUM N516001PV PLENUM N516001PW PLENUM N516001PX PLENUM N516001PY PLENUM N516001PZ PLENUM N516001QA PLENUM N516001QB PLENUM N516001QC PLENUM N516001QD PLENUM N516001QE PLENUM N516001QF PLENUM N516001QG PLENUM N516001QH PLENUM N516001QI PLENUM N516001QJ PLENUM N516001QK PLENUM N516001QL PLENUM N516001QM PLENUM N516001QN PLENUM N516001QO PLENUM N516001QP PLENUM N516001QQ PLENUM N516001QR PLENUM N516001QS PLENUM N516001QT PLENUM N516001QU PLENUM N516001QV PLENUM N516001QW PLENUM N516001QX PLENUM N516001QY PLENUM N516001QZ PLENUM N516001RA PLENUM N516001RB PLENUM N516001RC PLENUM N516001RD PLENUM N516001RE PLENUM N516001RF PLENUM N516001RG PLENUM N516001RH PLENUM N516001RI PLENUM N516001RJ PLENUM N516001RK PLENUM N516001RL PLENUM N516001RM PLENUM N516001RN PLENUM N516001RO PLENUM N516001RP PLENUM N516001RQ PLENUM N516001RR PLENUM N516001RS PLENUM N516001RT PLENUM N516001RU PLENUM N516001RV PLENUM N516001RW PLENUM N516001RX PLENUM N516001RY PLENUM N516001RZ PLENUM N516001SA PLENUM N516001SB PLENUM N516001SC PLENUM N516001SD PLENUM N516001SE PLENUM N516001SF PLENUM N516001SG PLENUM N516001SH PLENUM N516001SI PLENUM N516001SJ PLENUM N516001SK PLENUM N516001SL PLENUM N516001SM PLENUM N516001SN PLENUM N516001SO PLENUM N516001SP PLENUM N516001SQ PLENUM N516001SR PLENUM N516001SS PLENUM N516001ST PLENUM N516001SU PLENUM N516001SV PLENUM N516001SW PLENUM N516001SX PLENUM N516001SY PLENUM N516001SZ PLENUM N516001TA PLENUM N516001TB PLENUM N516001TC PLENUM N516001TD PLENUM N516001TE PLENUM N516001TF PLENUM N516001TG PLENUM N516001TH PLENUM N516001TI PLENUM N516001TJ PLENUM N516001TK PLENUM N516001TL PLENUM N516001TM PLENUM N516001TN PLENUM N516001TO PLENUM N516001TP PLENUM N516001TQ PLENUM N516001TR PLENUM N516001TS PLENUM N516001TU PLENUM N516001TV PLENUM N516001TW PLENUM N516001TX PLENUM N516001TY PLENUM N516001TZ PLENUM N516001UA PLENUM N516001UB PLENUM N516</p>
---	---

Removed in Accordance with RIS 2015–17

(REV. 20 10/2017)

PERRY NUCLEAR POWER PLANT
10 CENTER RD., PERRY, OHIO 44081

FINAL PLANT LAYOUT,
PLOT PLAN, PLANT AREA
FIGURE 1.2-2
(DWG. E-036-0022-00000)

Removed in Accordance with RIS 2015-17

(REV. 20 10/2017)

PERRY NUCLEAR POWER PLANT
10 CENTER RD., PERRY, OHIO 44081

FINAL PLANT LAYOUT, PLAN A ABOVE
ELEVS. 568'-6", 574'-10", 577'-6"
AND 580'-6", PLANT COMPLEX
FIGURE 1.2-3
(DWG. E-013-0003-00000)

Removed in Accordance with RIS 2015–17

(REV. 20 10/2017)

<p>PERRY NUCLEAR POWER PLANT 10 CENTER RD., PERRY, OHIO 44081</p>
<p>FINAL PLANT LAYOUT, PLAN B ABOVE ELEVS. 593'-6", 599'-0", 600'-6", 602'-6", AND 605'-6", PLANT COMPLEX FIGURE 1.2-4 (DWG. E-013-0004-00000)</p>

Removed in Accordance with RIS 2015-17

(REV. 20 10/2017)

PERRY NUCLEAR POWER PLANT
10 CENTER RD., PERRY, OHIO 44081

FINAL PLANT LAYOUT, PLAN C ABOVE
ELEVS. 620'-6", 623'-6" AND
624'-6", PLANT COMPLEX
FIGURE 1.2-5
(DWG. E-013-0005-00000)

FIGURE REDACTED PER RIS 2015–17

(REV. 20 10/2017)

PERRY NUCLEAR POWER PLANT
10 CENTER RD., PERRY, OHIO 44081

FINAL PLANT LAYOUT, PLAN D
ABOVE ELEVS. 638'-6", 642'-0"
AND 647'-6", PLANT COMPLEX
FIGURE 1.2-6
(DWG. E-013-0006-00000)

Removed in Accordance with RIS 2015-17

(REV. 20 10/2017)

PERRY NUCLEAR POWER PLANT
10 CENTER RD., PERRY, OHIO 44081

PLANT LAYOUT PLAN E ABOVE
ELEVS. 652'-0" AND EL. 654'-6",
PLANT COMPLEX
FIGURE 1.2-7
(DWG. E-013-0007-00000)

Removed in Accordance with RIS 2015-17

(REV. 20 10/2017)

PERRY NUCLEAR POWER PLANT
10 CENTER RD., PERRY, OHIO 44081

FINAL PLANT LAYOUT, PLAN F ABOVE
ELEVS. 664'-7", 665'-0", AND
670'-6", PLANT COMPLEX
FIGURE 1.2-8
(DWG. E-013-0008-00000)

Removed in Accordance with RIS 2015-17

(REV. 20 10/2017)

PERRY NUCLEAR POWER PLANT
10 CENTER RD., PERRY, OHIO 44081

FINAL PLANT LAYOUT, PLAN G ABOVE
ELEVS. 689'-6", PLANT COMPLEX
FIGURE 1.2-9
(DWG. E-013-0009-00000)

Removed in Accordance with RIS 2015–17

(REV. 20 10/2017)

PERRY NUCLEAR POWER PLANT
10 CENTER RD., PERRY, OHIO 44081

FINAL PLANT LAYOUT,
PLAN H ROOF PLAN
FIGURE 1.2-10
(DWG. E-013-0010-00000)

Removed in Accordance with RIS 2015-17

(REV. 20 10/2017)

PERRY NUCLEAR POWER PLANT
10 CENTER RD., PERRY, OHIO 44081

FINAL PLANT LAYOUT,
SECTION A-A
FIGURE 1.2-11
(DWG. E-013-0011-00000)

Removed in Accordance with RIS 2015-17

(REV. 20 10/2017)

PERRY NUCLEAR POWER PLANT
10 CENTER RD., PERRY, OHIO 44081

FINAL PLANT LAYOUT,
SECTION B-B
FIGURE 1.2-12
(DWG. E-013-0012-00000)

Removed in Accordance with RIS 2015–17

(REV. 20 10/2017)

PERRY NUCLEAR POWER PLANT
10 CENTER RD., PERRY, OHIO 44081

FINAL PLANT LAYOUT,
SECTION C-C
FIGURE 1.2-13
(DWG. E-013-0013-00000)

Removed in Accordance with RIS 2015–17

(REV. 20 10/2017)

PERRY NUCLEAR POWER PLANT
10 CENTER RD., PERRY, OHIO 44081

FINAL PLANT LAYOUT, CIRCULATING
WATER PUMPHOUSE, PLANS AND ELEVATIONS
FIGURE 1.2-14 (SHEET 1 OF 2)
(DWG. E-015-0016-00000)

Removed in Accordance with RIS 2015–17

(REV. 20 10/2017)

PERRY NUCLEAR POWER PLANT
10 CENTER RD., PERRY, OHIO 44081

FINAL PLANT LAYOUT, CIRCULATING
WATER PUMPHOUSE, PLANS AND ELEVATIONS
FIGURE 1.2-14 (SHEET 2 OF 2)
(DWG. E-015-0017-00000)

Removed in Accordance with RIS 2015–17

(REV. 20 10/2017)

PERRY NUCLEAR POWER PLANT
10 CENTER RD., PERRY, OHIO 44081

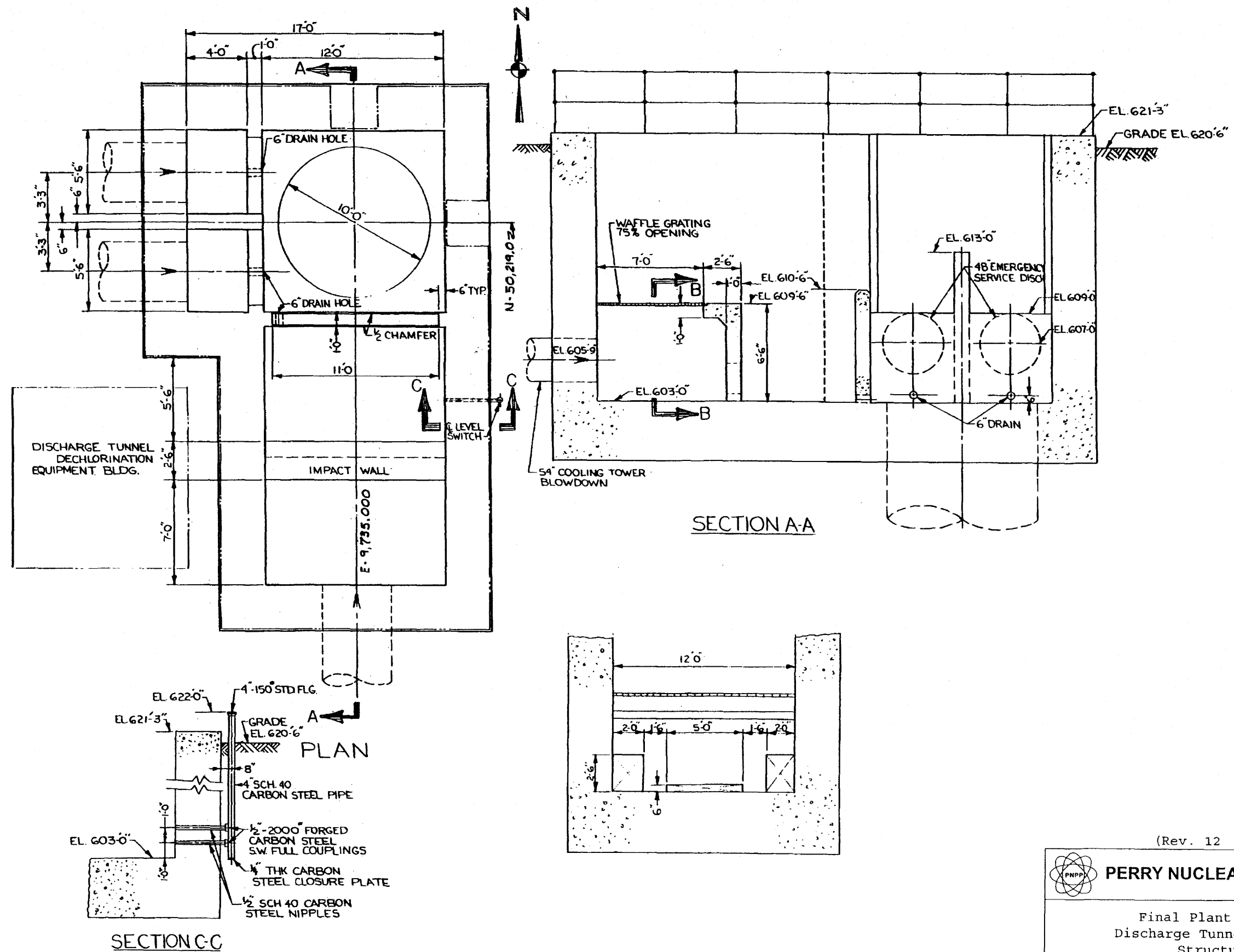
FINAL PLANT LAYOUT,
SERVICE WATER PUMPHOUSE
FIGURE 1.2-15
(DWG. E-015-0015-00000)

Removed in Accordance with RIS 2015-17

(REV. 20 10/2017)

PERRY NUCLEAR POWER PLANT
10 CENTER RD., PERRY, OHIO 44081

FINAL PLANT LAYOUT,
EMERGENCY SERVICE WATER
PUMPHOUSE PLANS AND ELEVATIONS
FIGURE 1.2-16
(DWG. E-015-0002-00000)



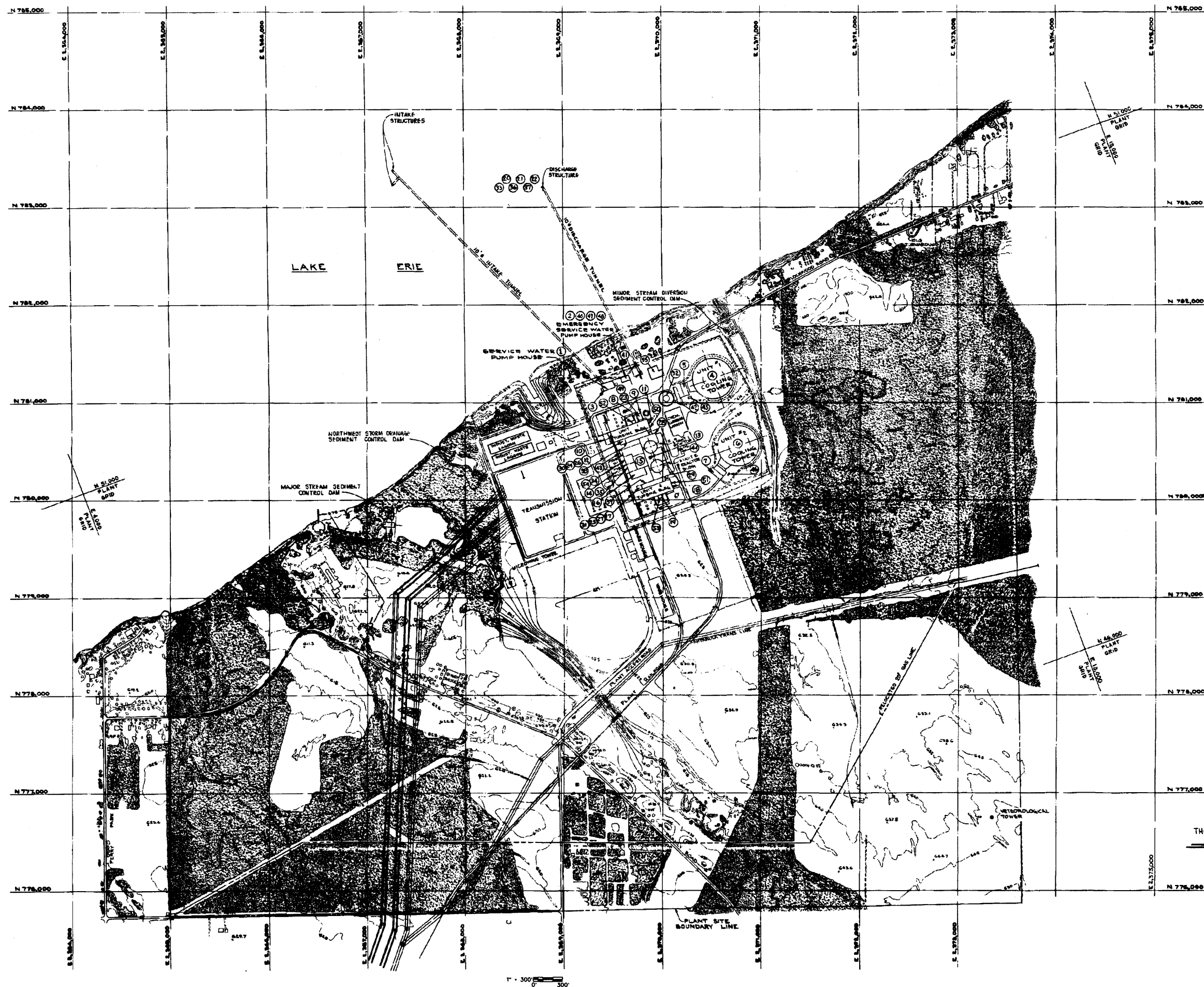
(Rev. 12 1/03)



PERRY NUCLEAR POWER PLANT

Final Plant Layout,
 Discharge Tunnel Entrance
 Structures

Figure 1.2-17
 (Dwg. B-015-003)



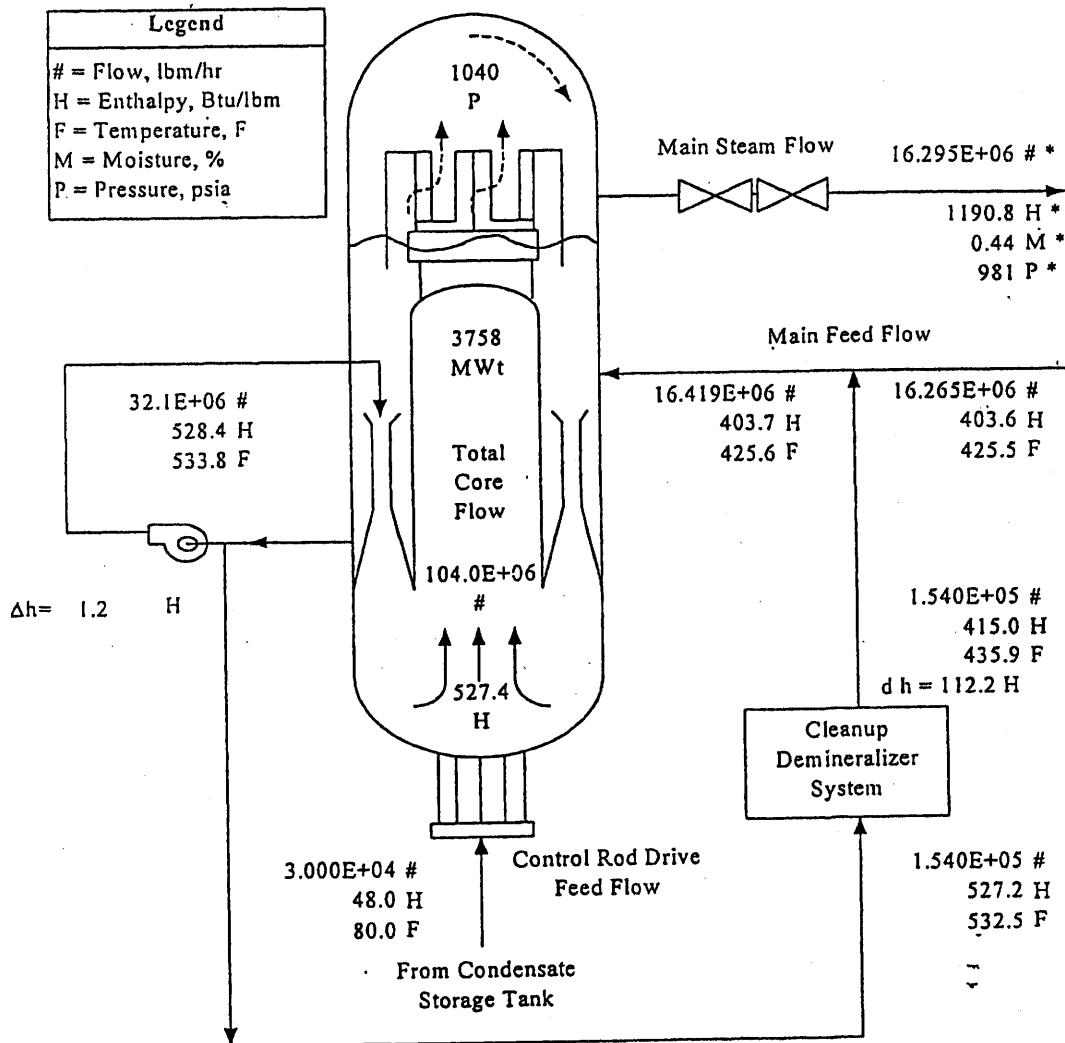
ITEM NO.	DESCRIPTION	RELEASE ELEVATION
1.	CONSTRUCTION SANITARY SEWAGE EFFLUENT	576'-0"
2.	EMERGENCY SERVICE WATER PUMP HOUSE VENT, EXHAUST	630'-0"
3.	SEWAGE TOWER AIR OUTLET - UNIT 1	620'-0"
4.	CIRCULATING WATER PUMP HOUSE VENT, EXHAUST - UNIT 1	1130'-0"
5.	CIRCULATING WATER PUMP HOUSE VENT, EXHAUST - UNIT 2	600'-0"
6.	CIRCULATING WATER PUMP HOUSE VENT, EXHAUST - UNIT 2	1130'-0"
7.	CIRCULATING WATER PUMP HOUSE VENT, EXHAUST - UNIT 2	600'-0"
8.	TURBINE BUILDING AND HEATER DAY EXHAUST - UNIT 1	722'-0"
9.	AUXILIARY BOILER BUILDING VENT, EXHAUST	647'-0"
10.	WATER TREATMENT BUILDING VENT, EXHAUST	645'-0" & 640'-0"
11.	LINE OIL STORAGE AREA VENT, EXHAUST - UNIT 1	626'-0"
12.	OFF-GAS AND TURBINE BUILDING VENT EXHAUST - UNIT 1	722'-0"
13.	PLANT VENT - UNIT 1 AND UNIT 2	780'-0"
14.	DIESEL GENERATOR BUILDING VENT, EXHAUST	620'-11"
15.	COOLING TOWER VENT, EXHAUST	657'-0"
16.	OFF-GAS AND TURBINE BUILDING VENT EXHAUST - UNIT 2	671'-0"
17.	LINE OIL STORAGE AREA VENT, EXHAUST - UNIT 2	630'-0"
18.	TURBINE BUILDING AND HEATER DAY EXHAUST - UNIT 2	722'-0"
19.	CIRCULATING WATER PUMP HOUSE VENT, EXHAUST	604'-0"
20.	EMERGENCY SERVICE WATER DISCHARGE	604'-0"
21.	AUXILIARY BOILER FINE GAS VENT, EXHAUST (2)	731'-0"
22.	START-UP COMBUSTION EXHAUST - UNIT 1	722'-0"
23.	START-UP COMBUSTION EXHAUST - UNIT 2	733'-0"
24.	OFF-GAS RELEASE - UNIT 1	733'-0"
25.	OFF-GAS RELEASE - UNIT 2	733'-0"
26.	EMERGENCY SERVICE WATER OVERFLOW - UNIT 1	621'-0"
27.	EMERGENCY SERVICE WATER OVERFLOW - UNIT 2	621'-0"
28.	STEAM PACKAGING EXHAUST DISCHARGE - UNIT 1	722'-0"
29.	STEAM PACKAGING EXHAUST DISCHARGE - UNIT 2	722'-0"
30.	FUEL OIL STORAGE TANK VENT	600'-0"
31.	LIGHTED WASTE DISCHARGE	604'-0"
32.	EMERGENCY DIESEL GENERATOR FUEL OIL TANK VENT (12)	604'-0" & 643'-0"
33.	EMERGENCY DIESEL GENERATOR COMBUSTION EXHAUST GASES (8)	607'-0"
34.	OVERHEAD CLEANING WASTE	604'-0"
35.	SANITARY SEWAGE EFFLUENT	604'-0"
36.	TURBINE POWER COOLANT BATTERY ROOM EXHAUST - UNIT 1	607'-0"
37.	TURBINE POWER COOLANT BATTERY ROOM EXHAUST - UNIT 2	607'-0"
38.	DIESEL DRIVEN FINE PUMP AREA EXHAUST	620'-0"
39.	DISCHARGE TOWER DEWATERING AND FINE PUMP EXHAUST	620'-0"
40.	FUEL OIL PUMP HOUSE VENT, EXHAUST	627'-0"
41.	WASTE BUILDING EXHAUST STORAGE AREA VENT, EXHAUST	600'-0"
42.	HYDROLYTIC DECONTAMINATION BUILDING AREA VENT, EXHAUST	604'-0"
43.	COOLING TOWER ACID ADDITION STORAGE BUILDING VENT, EXHAUST - UNIT 1	600'-0"
44.	COOLING TOWER ACID ADDITION STORAGE BUILDING VENT, EXHAUST - UNIT 2	600'-0"
45.	DIESEL DRIVEN FINE PUMP EXHAUST	620'-0"
46.	DIESEL DRIVEN FINE PUMP FUEL OIL TANK VENT	620'-0"
47.	AUXILIARY BOILER SAFETY VALVE ESCAPES, AUXILIARY BOILER HEADS/STOVE HEATER ESCAPE AND VENT AND AUXILIARY BOILER HEADS/STOVE VENT	609'-0"
48.	BATH TURBINE LINE OIL RESERVOIR VENT - UNIT 1	710'-0"
49.	BATH TURBINE LINE OIL RESERVOIR VENT - UNIT 2	710'-0"
50.	BATH TURBINE PUMP TURBINE OIL RESERVOIR VENT - UNIT 1 (2)	600'-11"
51.	BATH TURBINE PUMP TURBINE OIL RESERVOIR VENT - UNIT 2 (2)	600'-11"
52.	EMERGENCY DIESEL GENERATOR LINE OIL SUMP AND COOLING WATERS	600'-0"
53.	LOW LEVEL, FLOWMETER STORAGE AND PACKAGING FACILITY	626'-0"
54.	VENT EXHAUST	
55.		

NOTES: 1. COORDINATES SHOWN ON THIS DRAWING ARE BASED ON THE OHIO STATE COORDINATE SYSTEM.
 2. REACTOR COORDINATES: UNIT 1: N 779,345, E 1,369,875; UNIT 2: N 779,345, E 1,369,875.
 3. ALL BACKGROUND CONTOURS SUPPLIED BY AERIAL SURVEYS, INC.
 * ANNOTATED UNIT 2 RELEASE POINTS, NO SOURCE.

THIS DRAWING IS CLASSIFIED AS USAR SPECIFIC (REV. 19 10/2015)

PERRY NUCLEAR POWER PLANT
 10 CENTER RD., PERRY, OHIO 44081

FINAL PLANT LAYOUT,
 PLOT PLAN RELEASE POINT DESIGNATION
 FIGURE 1.2-18
 (DWG. D-036-0011-00000)



* Conditions at upstream side of TSV

Core Thermal Power	3758.0
Pump Heating	10.7
Cleanup Losses	-5.1
Other System Losses	-1.1
Turbine Cycle Use	3762.5 MWt

(Rev. 12 1/03)



PERRY NUCLEAR POWER PLANT

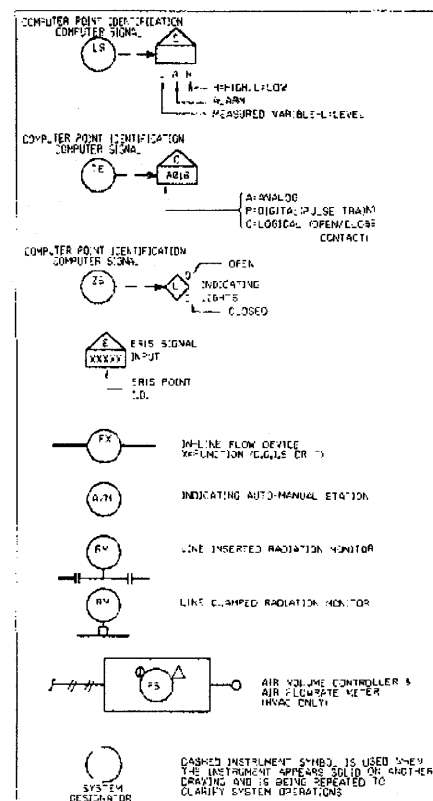
Heat Balance at Rated Power

Figure 1.2-19

INSTRUMENTATION

ALPHA-NUMERIC DESIGNATION IN LOWER HALF OF CIRCLE IS JUST FOUR DIGITS AT NO. NUMBER	(XXXX)
BASIC INSTRUMENT LOCALLY MOUNTED	(1)
LOCAL, BACK OR PANEL MOUNTED IDENTIFICATION, LOCAL IF PREFIXED WITH H22, H31 OR SYSTEM DESIGNATOR	(1) H22
CENTRAL ROOM PANEL MOUNTED IDENTIFICATION, LOCAL IF PREFIXED WITH H22	(1) H22
STATION IDENTIFICATION USE FOR EFFICIENCY TEST	(1) H22
HIGH / LOW ALARM ANALOG/DC	(1) H22

ALARM CRT IDENTIFICATION



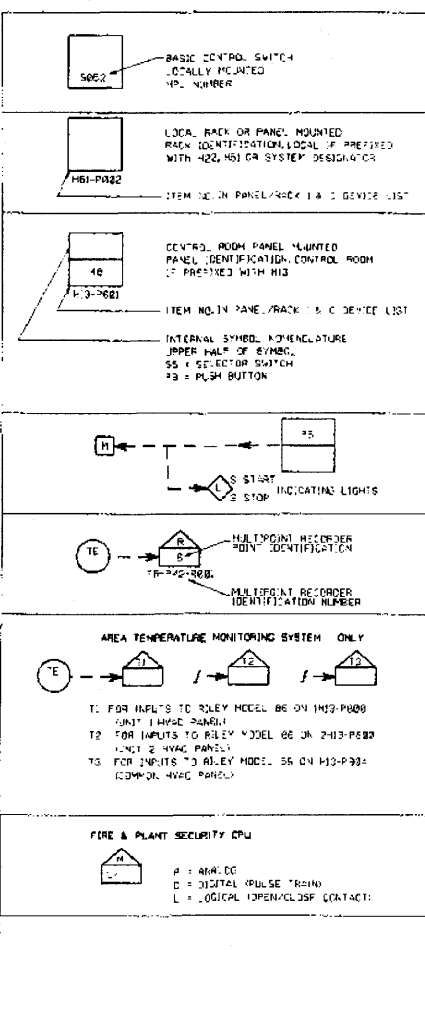
INSTRUMENT IDENTIFICATION LETTERS

MEASURED VARIABLE (1ST LETTER)	INSTRUMENT FUNCTION (2ND LETTER)
A ANALYSIS	B BISTABLE
D DENSITY	C CONTROLLER
F FLOW	E ELEMENT
H HAND	G OBSERVATION CLASS
J JUNE	I INDICATOR
L LEVEL	M MONITOR
N MOISTURE/HUMIDITY	P TEST POINT/OPERATING
R RADIATION	Q POWER SUPPLY
S SPEED	T RECORDER
U TEMPERATURE	V TRANSMITTER
W WEIGHT	X CONTROL VALVE
Y YIELD	Y TEST EFFICIENCY
Z POSITION	Z SIGNAL MODIFIER

FUNCTION DESIGNATORS

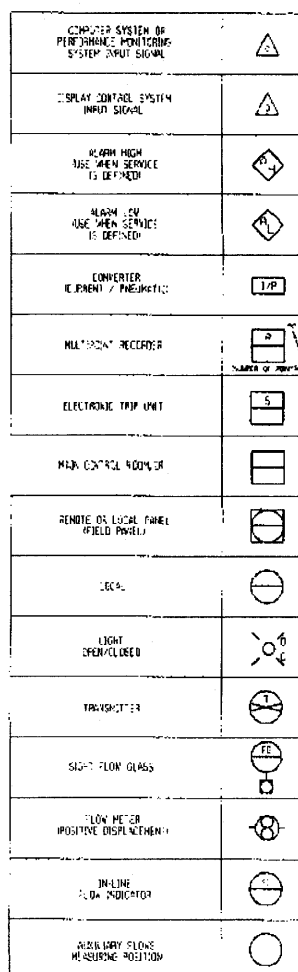
1/P	ELECTRO-PNEUMATIC CONVERTER		
2/P	RESISTANCE-TO-CURRENT CONVERTER		
3/P	PNEUMATIC-TO-ELECTRIC CONVERTER		
4/P	RESISTANCE-TO-VOLTAGE CONVERTER		
5/P	CURRENT-TO-CURRENT CONVERTER		
6/P	CURRENT-TO-PNEUMATIC CONVERTER		
7/P	ANALOG-DIGITAL CONVERTER		
8/P	AUTO MANUAL STATION		
9/P	PULSE GENERATOR		
10/P	TIME FUNCTION DELAY/FILTER		
11/P	HIGH SIGNAL ALARM/BEHOLD		
12/P	LOW SIGNAL ALARM/BEHOLD		
13/P	TOTALIZING QUANTITY		
14/P	SAW OR ATTENUATION		
15/P	REVERSE SIGNAL		
16/P	BIAS		
17/P	DIFFERENTIAL		
18/P	MULTIPLIER		
19/P	SQUARE ROOT EXTRACTOR		
20/P	PROPORTIONAL ACTION		
21/P	RESET ACTION		
22/P	RATE ACTION		
23/P	WITH INDICATION		
24/P	CARBON DIOXIDE		
25/P	CONDUCTIVITY		
26/P	OXYGEN		
27/P	HYDROGEN		
28/P	DIGITAL ANALOG CONVERTER		
29/P	TURBIDITY		
30/P	AVE. OF N INPUTS		
31/P	HIGH SIGNAL LIMITER		
32/P	LOW SIGNAL LIMITER		
33/P	VISCOSITY		
34/P	SILICA		
35/P	HYDROGEN ION CONCENTRATION		
36/P	CHLORINE		
37/P	REMOTE MANUAL		

CONTROL SWITCHES



INSTRUMENT FUNCTION	CONTROLLING (SECOND AND THIRD LETTERS)										MEASURING (FOURTH AND FIFTH LETTERS)										UNIT
	RECORDING	INDICATING	NON-INDICATING	CONTROL	VALVE	SUMMER	FUNCTION FOR RECORDING	FUNCTION FOR INDICATING	FUNCTION FOR NON-INDICATING	FUNCTION FOR CONTROL	FUNCTION FOR VALVE	FUNCTION FOR SUMMER	FUNCTION FOR RECORDING	FUNCTION FOR INDICATING	FUNCTION FOR NON-INDICATING	FUNCTION FOR CONTROL	FUNCTION FOR VALVE	FUNCTION FOR SUMMER			
REQUIRED VARIABLE (FIRST LETTER)																					
QIR	A	-	B	C	D	E	F	G	H	I	J	K	L	M	N	O	P	Q			
CONDUCTIVITY	A	C	B	C	D	E	F	G	H	I	J	K	L	M	N	O	P	Q			
DENSITY	D	B	C	D	E	F	G	H	I	J	K	L	M	N	O	P	Q	R			
QIR PRESS.	A	C	B	C	D	E	F	G	H	I	J	K	L	M	N	O	P	Q			
FLOW	A	F	G	H	I	J	K	L	M	N	O	P	Q	R	S	T	U	V			
MOISTURE	A	C	B	C	D	E	F	G	H	I	J	K	L	M	N	O	P	Q			
MOISTURE ION CONC.	A	C	B	C	D	E	F	G	H	I	J	K	L	M	N	O	P	Q			
LEVEL	A	C	B	C	D	E	F	G	H	I	J	K	L	M	N	O	P	Q			
MOL. WT.	A	C	B	C	D	E	F	G	H	I	J	K	L	M	N	O	P	Q			
NEUTRON FLUX	A	C	B	C	D	E	F	G	H	I	J	K	L	M	N	O	P	Q			
QIR	A	C	B	C	D	E	F	G	H	I	J	K	L	M	N	O	P	Q			
PRESSURE	A	C	B	C	D	E	F	G	H	I	J	K	L	M	N	O	P	Q			
POSITION	A	C	B	C	D	E	F	G	H	I	J	K	L	M	N	O	P	Q			
RADIATION	A	C	B	C	D	E	F	G	H	I	J	K	L	M	N	O	P	Q			
SPEED	A	C	B	C	D	E	F	G	H	I	J	K	L	M	N	O	P	Q			
TEMPERATURE	A	C	B	C	D	E	F	G	H	I	J	K	L	M	N	O	P	Q			
TIME	A	C	B	C	D	E	F	G	H	I	J	K	L	M	N	O	P	Q			
TURBIDITY	A	C	B	C	D	E	F	G	H	I	J	K	L	M	N	O	P	Q			
VISIBILITY	A	C	B	C	D	E	F	G	H	I	J	K	L	M	N	O	P	Q			
VOLUME	A	C	B	C	D	E	F	G	H	I	J	K	L	M	N	O	P	Q			
WIND FACTOR	A	C	B	C	D	E	F	G	H	I	J	K	L	M	N	O	P	Q			

INSTRUMENTS

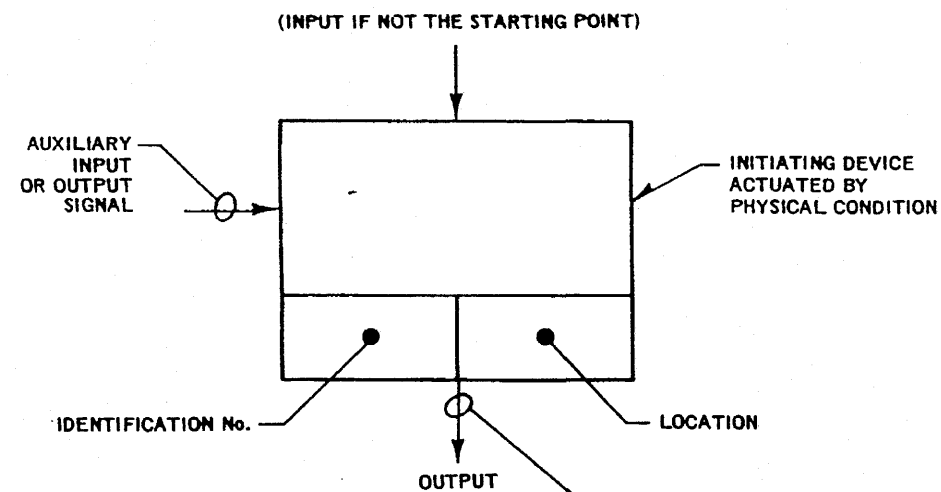


MISCELLANEOUS ABBREVIATIONS

A2S	AUTOMATIC DEPRESSURIZATION
A3S	AIR SUPPLY
A4S	AIR WATER CONDENSATE
A5S	CONDUCTIVITY INDICATOR TRANSMITTER
A6S	CONTROL ROD DRIVE
A7S	CONTROL ROD DRIVE HYDRAULIC SYSTEM
A8S	CONDUCTIVITY RECORDING SWITCH
A9S	CLEAN ROOM/ASTE
B1S	CYCLE TIMER
B2S	DIRTY ROOM/ASTE
B3S	DIFFERENTIAL "TEMPERATURE" SWITCH
B4S	CONVERTER "VOLTAGE/PNEUMATIC"
B5S	SPECIAL ELECTRIC POWER SUPPLY REQUIRED
B6S	FAIL. NO. IS NOT USED FOR NEW DESIGN
B7S	FEEDER DEPRESSURIZER
B8S	INDICATES CLOSED ON AIR OR ELECTRIC FAILURE
B9S	LOW INDICATOR TRANSMITTER
C1S	FAIL IN VIEW
C2S	INDICATES SPENS ON AIR OR ELECTRICAL FAILURE
C3S	FLOW RECORDING CONTROLLER SWITCH
C4S	HYDRAULIC CONTROL UNIT
C5S	MANUAL SWITCH NOT USED FOR NEW DESIGN
C6S	HEAT EXCHANGER
C7S	INTERLOCK
C8S	CONVERTER "CURRENT/PNEUMATIC"
C9S	LOCKED BY BEHOLD IN CLOSED POSITION
D1S	NOT USED FOR NEW DESIGN - SEE LIT
D2S	LEVEL & DENSITY RECORDER SWITCH
D3S	LIMIT SWITCH
D4S	LEVEL INDICATOR RECORDING SWITCH
D5S	LOCKED OR BEHOLD IN OPEN POSITION
D6S	LOSS OF COOLANT ACCIDENT
D7S	LEVEL RECORDING SWITCH
D8S	LOCKED OR BEHOLD IN CLOSED POSITION
D9S	MAIN STEAM ISOLATION VALVE
E1S	PULLDOWN TO CURRENT "INVERTED"
E2S	NORMALLY CLOSED NOT USED FOR NEW DESIGN
E3S	NORMALLY DE-ELECTRIC
E4S	NORMALLY ENERGIZED
E5S	NORMALLY OPEN NOT USED FOR NEW DESIGN
E6S	NORMALLY DE-ELECTRIC
E7S	NORMALLY ENERGIZED
E8S	NORMALLY OPEN NOT USED FOR NEW DESIGN
E9S	NORMALLY DE-ELECTRIC
F1S	NORMALLY ENERGIZED
F2S	NORMALLY OPEN NOT USED FOR NEW DESIGN
F3S	NORMALLY DE-ELECTRIC
F4S	NORMALLY ENERGIZED
F5S	NORMALLY OPEN NOT USED FOR NEW DESIGN
F6S	NORMALLY DE-ELECTRIC
F7S	NORMALLY ENERGIZED
F8S	NORMALLY OPEN NOT USED FOR NEW DESIGN
F9S	NORMALLY DE-ELECTRIC
G1S	NORMALLY ENERGIZED
G2S	NORMALLY OPEN NOT USED FOR NEW DESIGN
G3S	NORMALLY DE-ELECTRIC
G4S	NORMALLY ENERGIZED
G5S	NORMALLY OPEN NOT USED FOR NEW DESIGN
G6S	NORMALLY DE-ELECTRIC
G7S	NORMALLY ENERGIZED
G8S	NORMALLY OPEN NOT USED FOR NEW DESIGN
G9S	NORMALLY DE-ELECTRIC
H1S	NORMALLY ENERGIZED
H2S	NORMALLY OPEN NOT USED FOR NEW DESIGN
H3S	NORMALLY DE-ELECTRIC
H4S	NORMALLY ENERGIZED
H5S	NORMALLY OPEN NOT USED FOR NEW DESIGN
H6S	NORMALLY DE-ELECTRIC
H7S	NORMALLY ENERGIZED
H8S	NORMALLY OPEN NOT USED FOR NEW DESIGN
H9S	NORMALLY DE-ELECTRIC
I1S	NORMALLY ENERGIZED
I2S	NORMALLY OPEN NOT USED FOR NEW DESIGN
I3S	NORMALLY DE-ELECTRIC
I4S	NORMALLY ENERGIZED
I5S	NORMALLY OPEN NOT USED FOR NEW DESIGN
I6S	NORMALLY DE-ELECTRIC
I7S	NORMALLY ENERGIZED
I8S	NORMALLY OPEN NOT USED FOR NEW DESIGN
I9S	NORMALLY DE-ELECTRIC
J1S	NORMALLY ENERGIZED
J2S	NORMALLY OPEN NOT USED FOR NEW DESIGN
J3S	NORMALLY DE-ELECTRIC
J4S	NORMALLY ENERGIZED
J5S	NORMALLY OPEN NOT USED FOR NEW DESIGN
J6S	NORMALLY DE-ELECTRIC
J7S	NORMALLY ENERGIZED
J8S	NORMALLY OPEN NOT USED FOR NEW DESIGN
J9S	NORMALLY DE-ELECTRIC
K1S	NORMALLY ENERGIZED
K2S	NORMALLY OPEN NOT USED FOR NEW DESIGN
K3S	NORMALLY DE-ELECTRIC
K4S	NORMALLY ENERGIZED
K5S	NORMALLY OPEN NOT USED FOR NEW DESIGN
K6S	NORMALLY DE-ELECTRIC
K7S	NORMALLY ENERGIZED
K8S	NORMALLY OPEN NOT USED FOR NEW DESIGN
K9S	NORMALLY DE-ELECTRIC
L1S	NORMALLY ENERGIZED
L2S	NORMALLY OPEN NOT USED FOR NEW DESIGN
L3S	NORMALLY DE-ELECTRIC
L4S	NORMALLY ENERGIZED
L5S	NORMALLY OPEN NOT USED FOR NEW DESIGN
L6S	NORMALLY DE-ELECTRIC
L7S	NORMALLY ENERGIZED
L8S	NORMALLY OPEN NOT USED FOR NEW DESIGN
L9S	NORMALLY DE-ELECTRIC
M1S	NORMALLY ENERGIZED
M2S	NORMALLY OPEN NOT USED FOR NEW DESIGN
M3S	NORMALLY DE-ELECTRIC
M4S	NORMALLY ENERGIZED
M5S	NORMALLY OPEN NOT USED FOR NEW DESIGN
M6S	NORMALLY DE-ELECTRIC
M7S	NORMALLY ENERGIZED
M8S	NORMALLY OPEN NOT USED FOR NEW DESIGN
M9S	NORMALLY DE-ELECTRIC
N1S	NORMALLY ENERGIZED
N2S	NORMALLY OPEN NOT USED FOR NEW DESIGN
N3S	NORMALLY DE-ELECTRIC
N4S	NORMALLY ENERGIZED
N5S	NORMALLY OPEN NOT USED FOR NEW DESIGN
N6S	NORMALLY DE-ELECTRIC
N7S	NORMALLY ENERGIZED
N8S	NORMALLY OPEN NOT USED FOR NEW DESIGN
N9S	NORMALLY DE-ELECTRIC
O1S	NORMALLY ENERGIZED
O2S	NORMALLY OPEN NOT USED FOR NEW DESIGN
O3S	NORMALLY DE-ELECTRIC
O4S	NORMALLY ENERGIZED
O5S	NORMALLY OPEN NOT USED FOR NEW DESIGN
O6S	NORMALLY DE-ELECTRIC
O7S	NORMALLY ENERGIZED
O8S	NORMALLY OPEN NOT USED FOR NEW DESIGN
O9S	NORMALLY DE-ELECTRIC
P1S	NORMALLY ENERGIZED
P2S	NORMALLY OPEN NOT USED FOR NEW DESIGN
P3S	NORMALLY DE-ELECTRIC
P4S	NORMALLY ENERGIZED
P5S	NORMALLY OPEN NOT USED FOR NEW DESIGN
P6S	NORMALLY DE-ELECTRIC
P7S	NORMALLY ENERGIZED
P8S	NORMALLY OPEN NOT USED FOR NEW DESIGN
P9S	NORMALLY DE-ELECTRIC
Q1S	NORMALLY ENERGIZED
Q2S	NORMALLY OPEN NOT USED FOR NEW DESIGN
Q3S	NORMALLY DE-ELECTRIC
Q4S	NORMALLY ENERGIZED
Q5S	NORMALLY OPEN NOT USED FOR NEW DESIGN
Q6S	NORMALLY DE-ELECTRIC
Q7S	NORMALLY ENERGIZED
Q8S	NORMALLY OPEN NOT USED FOR NEW DESIGN
Q9S	NORMALLY DE-ELECTRIC
R1S	NORMALLY ENERGIZED
R2S	NORMALLY OPEN NOT USED FOR NEW DESIGN
R3S	NORMALLY DE-ELECTRIC
R4S	NORMALLY ENERGIZED
R5S	NORMALLY OPEN NOT USED FOR NEW DESIGN
R6S	NORMALLY DE-ELECTRIC
R7S	NORMALLY ENERGIZED
R8S	NORMALLY OPEN NOT USED FOR NEW DESIGN
R9S	NORMALLY DE-ELECTRIC
S1S	NORMALLY ENERGIZED
S2S	NORMALLY OPEN NOT USED FOR NEW DESIGN
S3S	NORMALLY DE-ELECTRIC
S4S	NORMALLY ENERGIZED
S5S	NORMALLY OPEN NOT USED FOR NEW DESIGN
S6S	NORMALLY DE-ELECTRIC
S7S	NORMALLY ENERGIZED
S8S	NORMALLY OPEN NOT USED FOR NEW DESIGN
S9S	NORMALLY DE-ELECTRIC
T1S	NORMALLY ENERGIZED
T2S	NORMALLY OPEN NOT USED FOR NEW DESIGN
T3S	NORMALLY DE-ELECTRIC
T4S	NORMALLY ENERGIZED
T5S	NORMALLY OPEN NOT USED FOR NEW DESIGN
T6S	NORMALLY DE-ELECTRIC
T7S	NORMALLY ENERGIZED
T8S	NORMALLY OPEN NOT USED FOR NEW DESIGN
T9S	NORMALLY DE-ELECTRIC

NOTES:

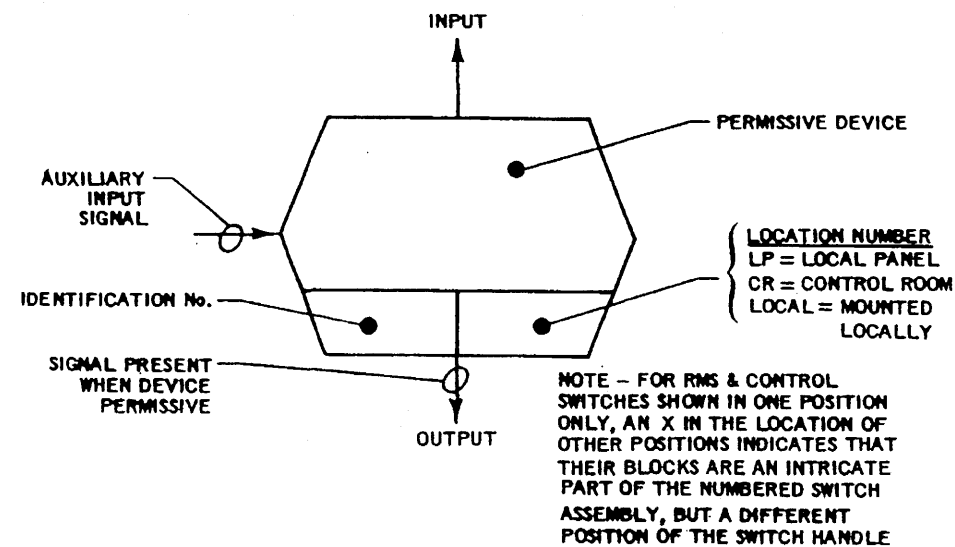
1. SYMBOLS AND ABBREVIATIONS HAVE BEEN CHANGED CORRESPONDINGLY TO THE NEW SYMBOLS AND ABBREVIATIONS. SEE LIT FOR DETAILS.
2. FOR INSTRUMENTATION AND CONTROL SYMBOLS, SEE LIT FOR DETAILS. THE PREFERRED SYMBOL IS THAT WHICH IS THE PREFERRED SYMBOL. THE PREFERRED SYMBOLS SHALL BE USED FOR ALL P-TYPE SYMBOLS. AND DRAWINGS SHOULD BE



COMMAND BLOCK

THIS BLOCK CAN REPRESENT A SWITCH, VALVE, PROBE, TIMER OR TRIP CIRCUIT. IT IS NORMALLY THE STARTING POINT OF A FUNCTIONAL SEQUENCE WITH AN OUTPUT ONLY, BUT CAN HAVE INPUT AND AUX. INPUT DEPENDING ON THE TYPE OF DEVICE. THE SAME DEVICE MAY HAVE A NUMBER OF OUTPUTS, BUT EACH FUNCTIONAL SEQUENCE INITIATED SHALL BE SHOWN BY AN INDIVIDUAL BLOCK SHOWING THE SAME IDENTIFICATION NUMBER

SIGNAL IS PRESENT WHEN CONDITION IS DESCRIBED WITHIN THE BLOCK EXISTS

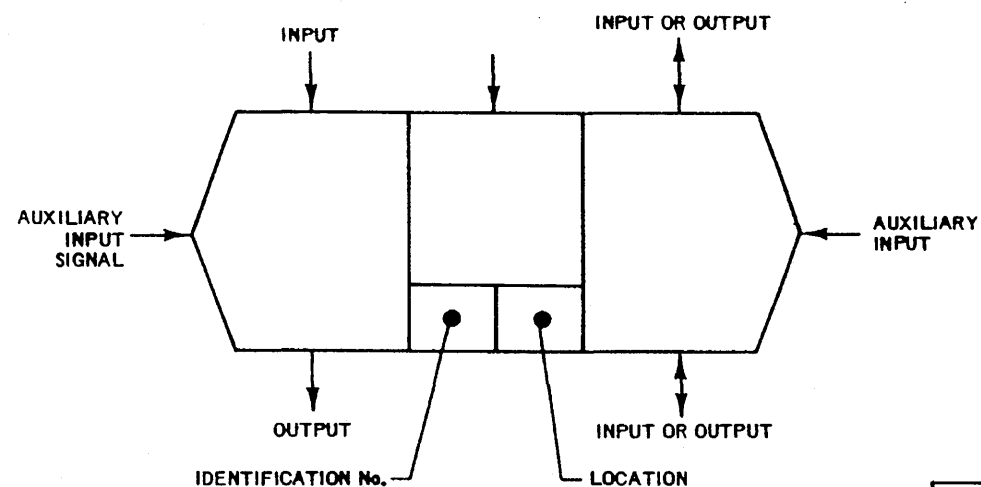


PERMISSIVE DEVICE BLOCK

THIS BLOCK DEFINES A PERMISSIVE FUNCTION WHICH MUST BE SATISFIED TO PERMIT THE SIGNAL FLOW TO PASS TO THE NEXT BLOCK. THIS BLOCK HAS INCOMING, OUTGOING AND MAY HAVE AUXILIARY SIGNALS. THE OUTPUT FROM THIS PERMISSIVE MAY BE SEALED IN

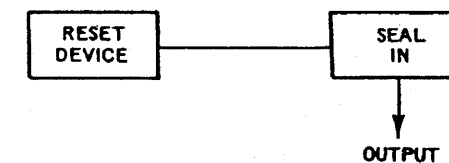
PERMISSIVE E CONDITION BLOCK

WHERE THE PERMISSIVE IS A GENERAL CONDITION AND NOT IDENTIFIED WITH A SINGLE DEVICE THE OUTPUTS ENCLOSURE ONLY IS SHOWN.



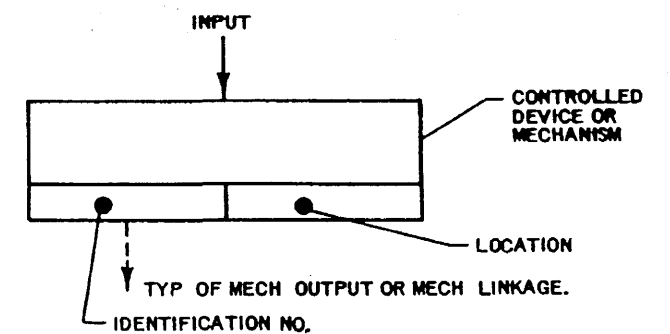
PERMISSIVE OPERATED BY OTHER DEVICES BLOCK

THIS BLOCK IS A PERMISSIVE OPERATED BY DEVICES SUCH AS VALVE OR PUMP SWITCHGEAR DESIGNATED IN THE INNER BLOCK. THIS COND OR DEVICE EFFECTS THE OPERATION OF THE FINAL DEVICE. IT HAS ELECT INPUTS, MECH INPUTS, AUX INPUTS (MECH OR ELEC) AND MECH OR ELECT OUTPUTS. THIS DEVICE IS NORMALLY A VALVE. THIS IS ALSO USED FOR OTHER INPUT/OUTPUT POWER SOURCES SUCH AS AIR OR HYDRAULIC. A SOLENOID PILOT VALVE FOR AN AIR OPERATED VALVE IS AN EXAMPLE OF THIS TYPE DEVICE.



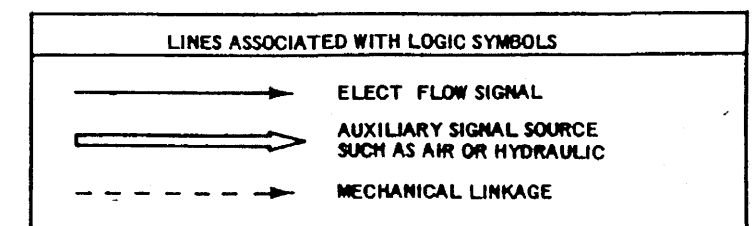
SEAL-IN BLOCK

A SEAL-IN OR LATCHING BLOCK'S FUNCTION IS TO MAINTAIN AN INPUT SIGNAL TO A DEVICE ONCE THE DEVICE HAS BEEN ACTUATED. RESETTING OR INHIBITING A SEAL-IN MAY BE EITHER EXPRESSED OR IMPLIED. IF IMPLIED, THE SEAL-IN WILL BE RESET OR INHIBITED BY INTERRUPTING THE SIGNAL TO THE DEVICE DOWNSTREAM FROM THE POINT WHERE SEAL-IN IS INDICATED. A SEAL-IN SHOWN WITHOUT A RESET DEVICE IMPLIES THAT THE RESET DEVICE IS PART OF, AND LOCATED ON THE NEAREST VALVE OR CONTACTOR. IN ALL OTHER CASES THE RESET DEVICE SHALL BE SHOWN IN CONJUNCTION WITH THE SEAL-IN.



FINAL DEVICE BLOCK

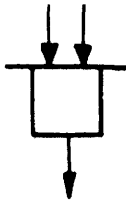
THIS BLOCK CAN BE A RELAY, VALVE, ELECTRO-MECH SW. ETC. NORMALLY IT HAS ONLY INPUTS, BUT CAN HAVE MECH OUTPUTS OR POSITION SWITCH OUTPUTS.



(Rev. 12 1/03)

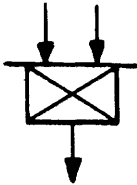
SYMBOL

FUNCTION



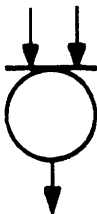
AND:

A FUNCTION WHICH PRODUCES AN OUTPUT ONLY WHEN EVERY INPUT EXISTS.



NOT:

A FUNCTION WHICH PRODUCES AN OUTPUT IF ANY OF THE INPUTS DOES NOT EXIST.



OR:

A FUNCTION WHICH PRODUCES AN OUTPUT IF ANY ONE OF ITS INPUTS EXIST.



TIME
DELAY

A FUNCTION WHICH PRODUCES AN OUTPUT FOLLOWING A TIME DELAY AFTER RECEIVING AN INPUT.



ADJUSTABLE
TIME DELAY

A FUNCTION WHOSE OUTPUT IS DE-ENERGIZED FOLLOWING A TIME DELAY AFTER ITS INPUT IS DE-ENERGIZED.



LOGIC INFORMATION TRANSMISSION



ANALOG INFORMATION TRANSMISSION

(Rev. 12 1/03)

LOGIC SYMBOLS



PERRY NUCLEAR POWER PLANT

AE (GAI) Logic Symbols Used on
Functional Diagrams

Figure 1.2-23