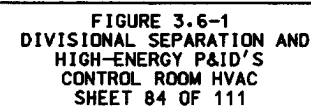


CLINTON POWER STATION
UPDATED SAFETY ANALYSIS REPORT

FIGURE 3.6-1
DIVISIONAL SEPARATION AND
HIGH-ENERGY P&ID'S-
CONCENTRATE TANK
SHEET 83 OF 111



201-1102

OVC03CA,CB
CONTROL ROOM HVAC
SUPPLY FAN A, B
K-2904

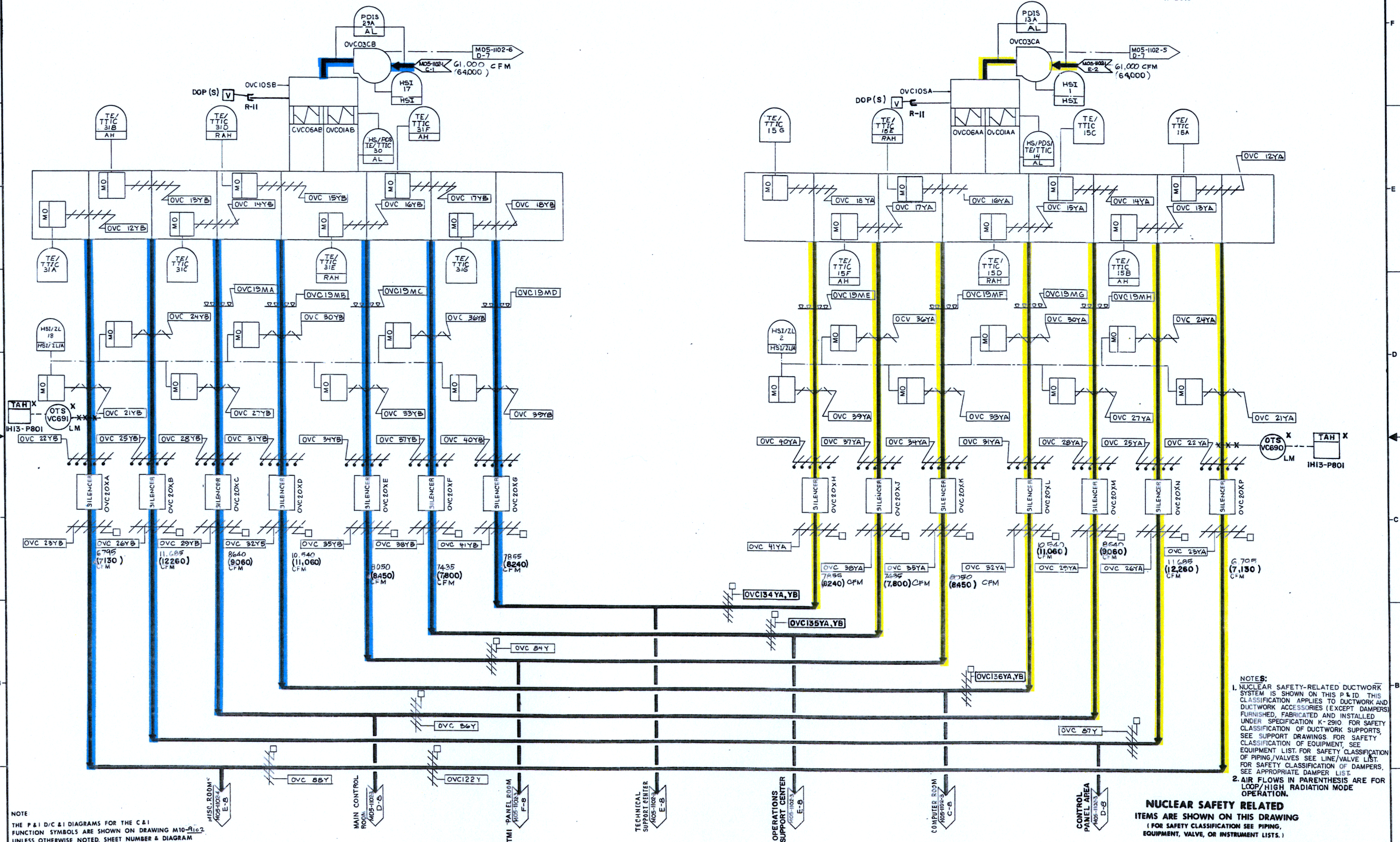
OVC01AA, AB
CONTROL ROOM HVAC
ELECTRIC HEATING COIL A, B
K-2902

OVC06AA, AB
CONTROL ROOM HVAC
COOLING COIL A, B
K-2902

OVC10SA, SB
CONTROL ROOM HVAC
AIR HANDLING UNIT A, B
K-2902

OVC19MA, MB, MC, MD, ME, MF, MG & MH
CONTROL ROOM SYSTEM HVAC
HUMIDIFIERS
K-2910

OVC20XA, XB, XC, XD, XE, XF, XG, XH, XI, XJ, XK,
XL, XM, XN & XP
CONTROL ROOM SILENCERS
K-2910

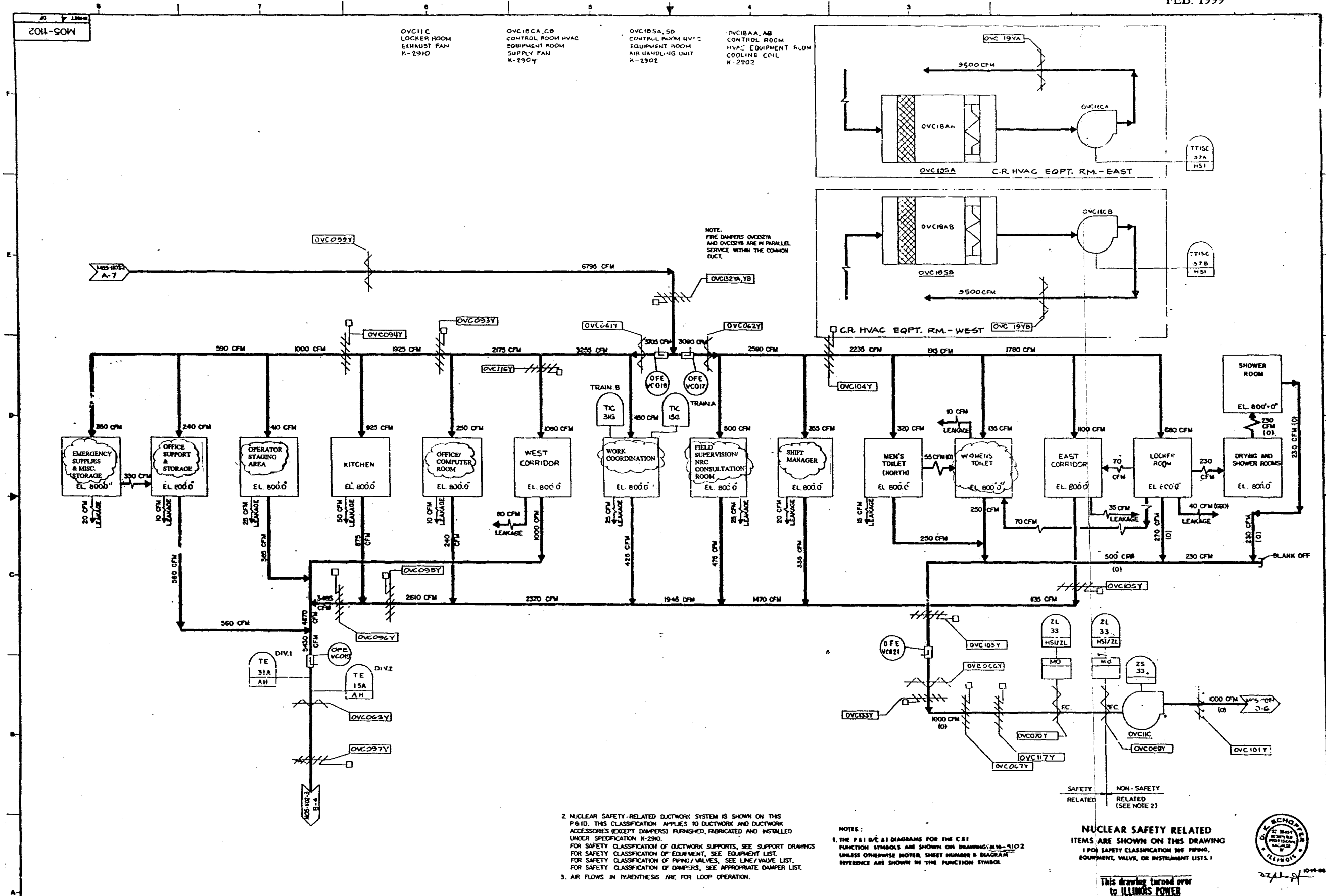


CLINTON POWER STATION
UPDATED SAFETY ANALYSIS REPORT

FIGURE 3.6-1
DIVISIONAL SEPARATION AND
HIGH-ENERGY P&ID'S
CONTROL ROOM HVAC
SHEET 85 OF 111



FIGURE 3.6-1
DIVISIONAL SEPARATION AND
HIGH-ENERGY P&ID'S-
CONTROL ROOM HVAC
SHEET 86 OF 111

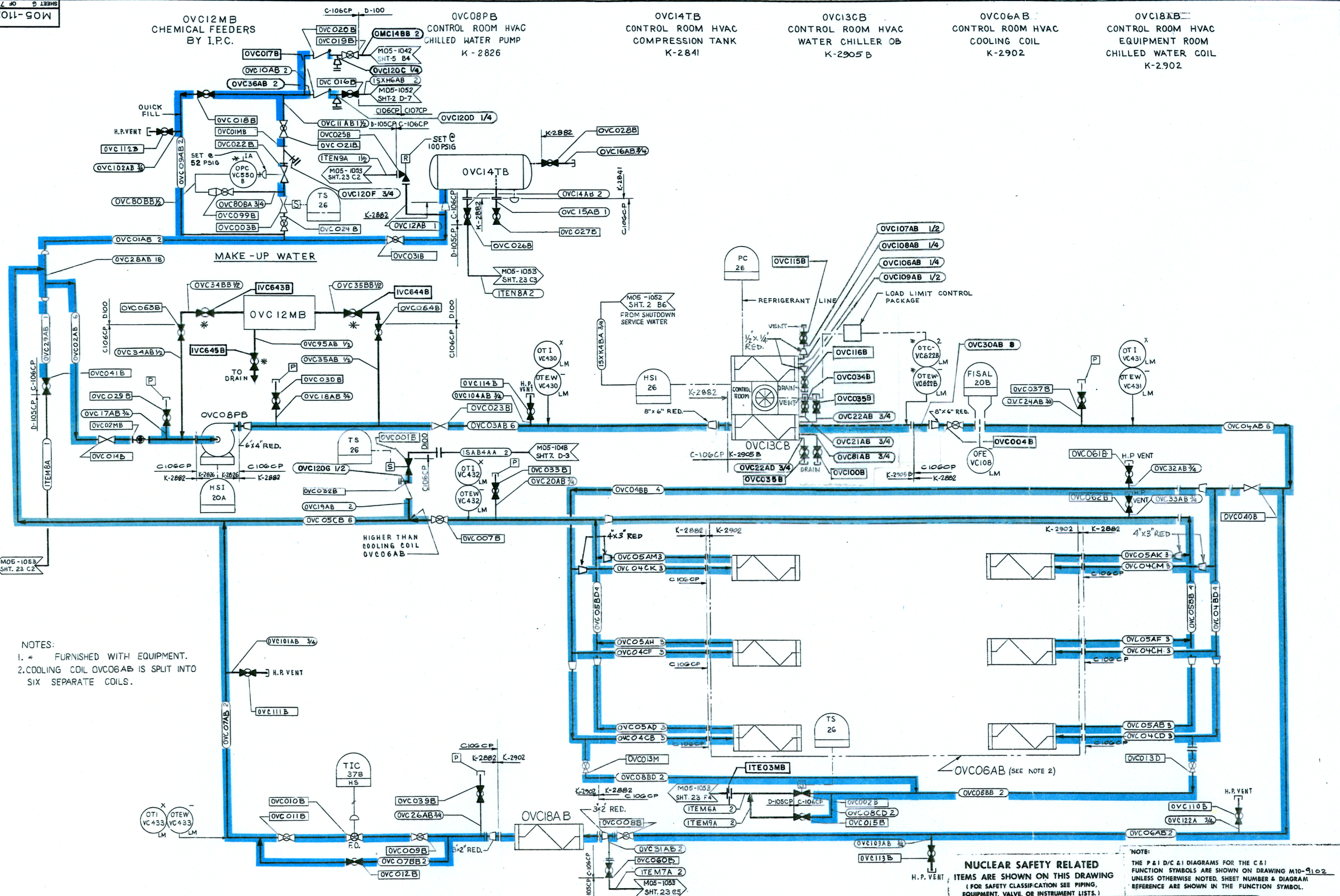


**NUCLEAR SAFETY RELATED
ITEMS ARE SHOWN ON THIS DRAWING
(FOR SAFETY CLASSIFICATION SEE PIPING,
EQUIPMENT, VALVE, OR INSTRUMENT LISTS.)**

This drawing turned over
to ILLINOIS POWER

**CLINTON POWER STATION
UPDATED SAFETY ANALYSIS REPORT**

MOS-1102

OVC12MB
CHEMICAL FEEDERS
BY I.P.C.OVC08PB
CONTROL ROOM HVAC
CHILLED WATER PUMP
K-2826OVC14TB
CONTROL ROOM HVAC
COMPRESSION TANK
K-2841OVC13CB
CONTROL ROOM HVAC
WATER CHILLER OB
K-2905BOVC06AB
CONTROL ROOM HVAC
COOLING COIL
K-2902OVC18AB
CONTROL ROOM HVAC
EQUIPMENT ROOM
CHILLED WATER COIL
K-2902CLINTON POWER STATION
UPDATED SAFETY ANALYSIS REPORTFIGURE 3.6-1
DIVISIONAL SEPARATION AND
HIGH-ENERGY P&ID'S-
CONTROL ROOM HVAC
SHEET 89 OF 111

CLINTON POWER STATION
UPDATED SAFETY ANALYSIS REPORT

8111-SOW
 DATE
 FILE TO

OVL13B
 LABORATORY HUMIDIFICATION
 STEAM BOILER
 K-2910

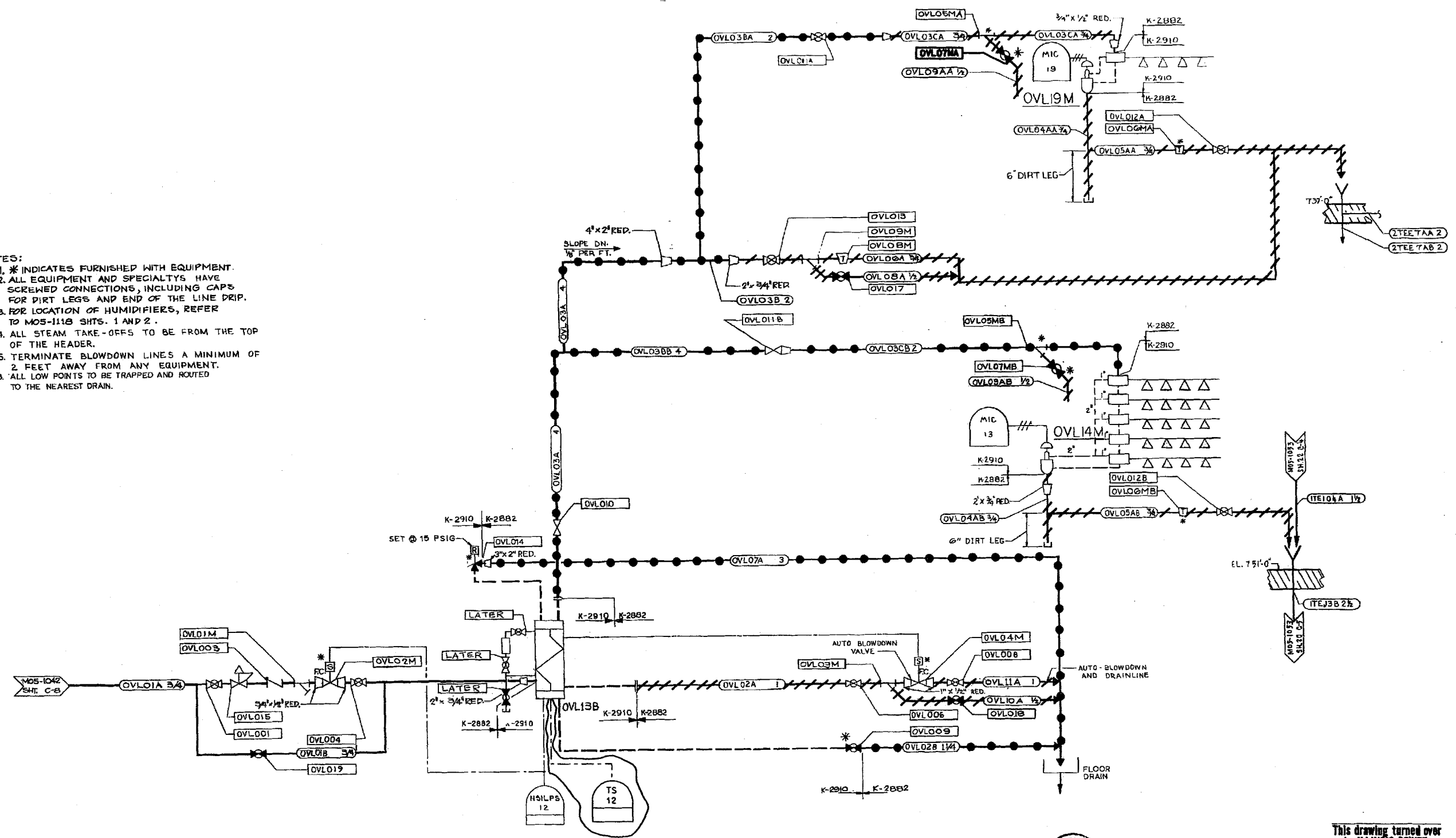
OVL14M
 LABORATORY HUMIDIFIER
 K-2910

OVL19M
 COUNTING ROOM HUMIDIFIER
 K-2910

REVISION 8
 MARCH 1998

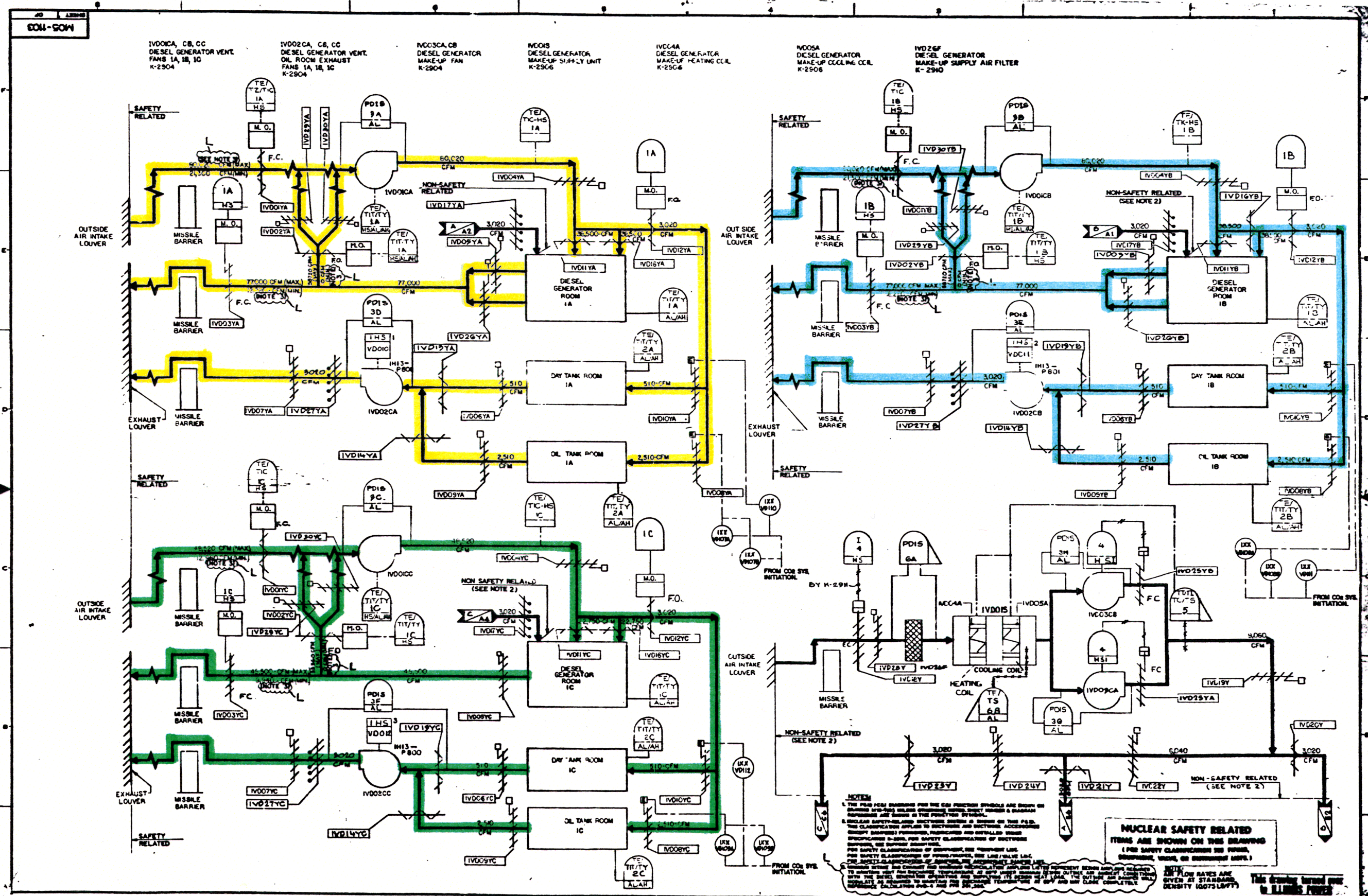
NOTES:

1. * INDICATES FURNISHED WITH EQUIPMENT.
2. ALL EQUIPMENT AND SPECIALTYS HAVE SCREWED CONNECTIONS, INCLUDING CAPS FOR DIRT LEGS AND END OF THE LINE DRIP.
3. FOR LOCATION OF HUMIDIFIERS, REFER TO MOS-1118 SHTS. 1 AND 2.
4. ALL STEAM TAKE-OFFS TO BE FROM THE TOP OF THE HEADER.
5. TERMINATE BLOWDOWN LINES A MINIMUM OF 2 FEET AWAY FROM ANY EQUIPMENT.
6. ALL LOW POINTS TO BE TRAPPED AND ROUTED TO THE NEAREST DRAIN.



This drawing turned over
 to ILLINOIS POWER
 NOTE:
 THE P&ID/C&I DETAILS FOR THE C&I
 FUNCTION SYMBOLS ARE SHOWN ON DRAWING M10-211/2
 UNLESS OTHERWISE NOTED, SHEET NUMBER & DETAIL
 REFERENCE ARE SHOWN IN THE FUNCTION SYMBOL.

CLINTON POWER STATION
 UPDATED SAFETY ANALYSIS REPORT
 FIGURE 3.6-1
 DIVISIONAL SEPARATION AND
 HIGH-ENERGY P&ID'S
 LABORATORY AND COUNTING ROOM HVAC
 SHEET 90A OF 111



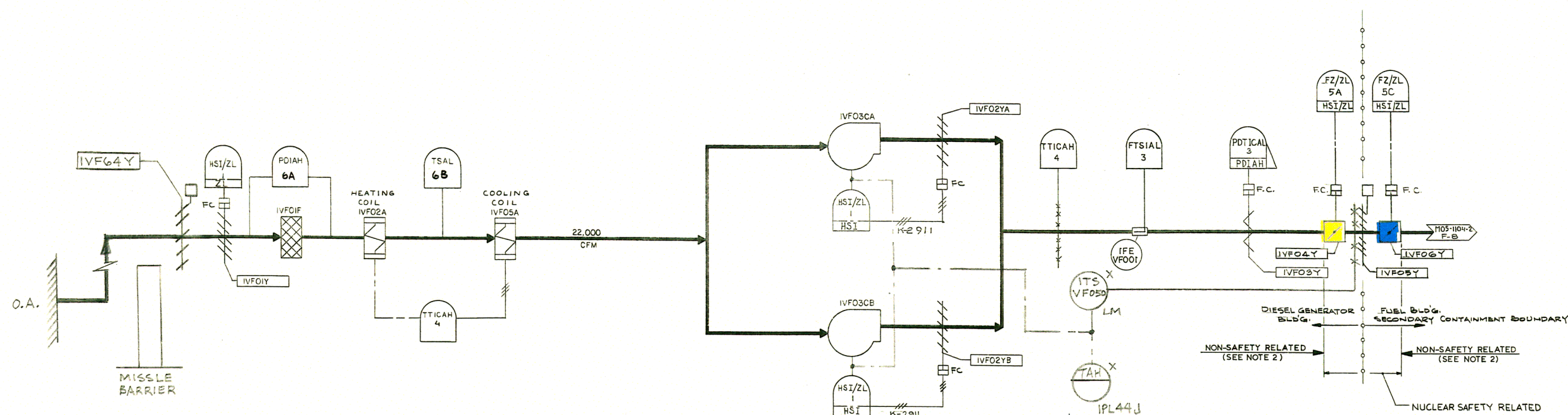
IVFO1F
FUEL BLDG. VENT.
SUPPLY AIR FILTER
K-2910

IVFO2A
FUEL BLDG. VENT.
SUPPLY AIR HTG. COIL
K-2908

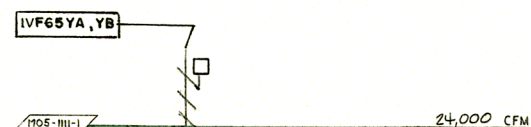
IVFO3CA,CB
FUEL BLDG. VENT.
SUPPLY AIR FANS 1A,1B
K-2904

IVFO4CA,CB
FUEL BLDG. VENT.
EXHAUS AIR FANS 1A,1B
K-2904

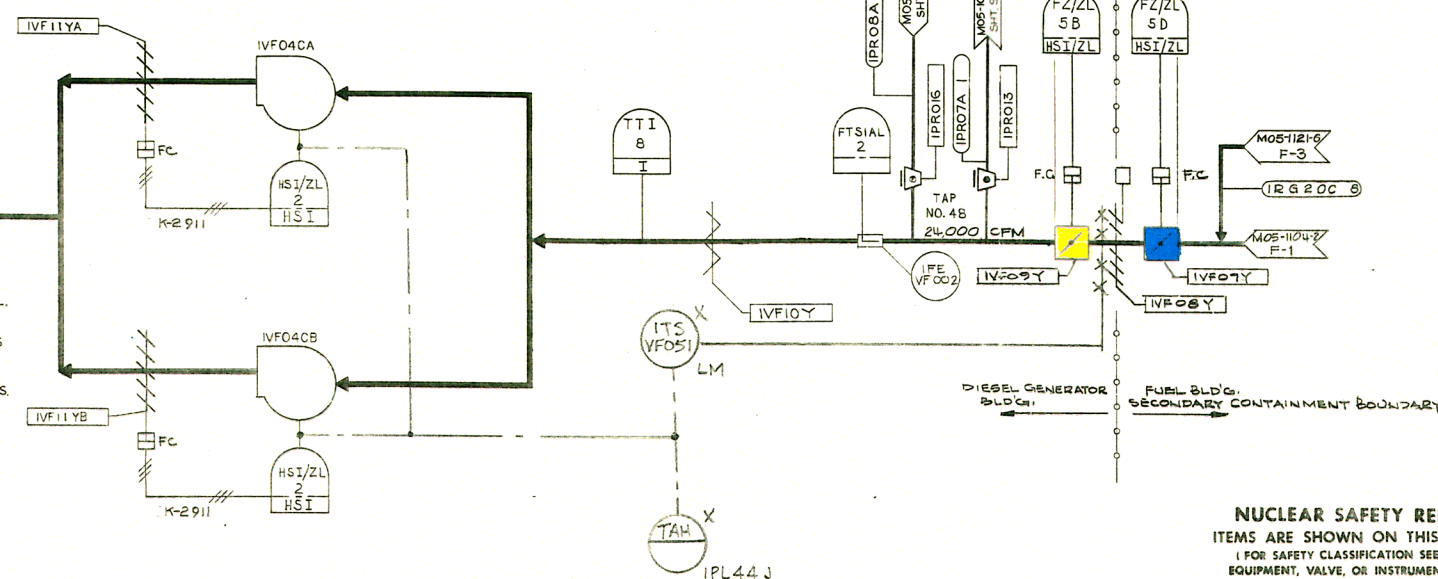
IVFO5A
FUEL BLDG. VENT.
SUPPLY AIR CLG. COIL
K-2906



NOTE: FIRE DAMPERS IVF65YA AND IVF65YB
ARE IN PARALLEL SERVICE WITHIN THE
COMMON DUCT.



- NOTES:
1. THE P&ID/C&I DIAGRAMS FOR THE C&I FUNCTION SYMBOLS ARE SHOWN ON DRAWING M10-1104 UNLESS OTHERWISE NOTED. SHEET NUMBER & DIAGRAM REFERENCE ARE SHOWN IN THE FUNCTION SYMBOL.
 2. NUCLEAR SAFETY-RELATED DUCTWORK SYSTEM IS SHOWN ON THIS P&ID. THIS CLASSIFICATION APPLIES TO DUCTWORK AND DUCTWORK ACCESSORIES (EXCEPT DAMPERS) FURNISHED, FABRICATED AND INSTALLED UNDER SPECIFICATION K-2910.
FOR SAFETY CLASSIFICATION OF DUCTWORK SUPPORTS, SEE SUPPORT DWG'S.
FOR SAFETY CLASSIFICATION OF EQUIPMENT, SEE EQUIPMENT LIST.
FOR SAFETY CLASSIFICATION OF PIPING/VALVES, SEE LINE/VALVE LIST.
FOR SAFETY CLASSIFICATION OF DAMPERS, SEE APPROPRIATE DAMPER LIST.



NUCLEAR SAFETY RELATED
ITEMS ARE SHOWN ON THIS DRAWING
(FOR SAFETY CLASSIFICATION SEE PIPING,
EQUIPMENT, VALVE, OR INSTRUMENT LISTS.)

CLINTON POWER STATION
UPDATED SAFETY ANALYSIS REPORT

FIGURE 3.6-1
DIVISIONAL SEPARATION AND
HIGH-ENERGY P&ID'S-
FUEL BUILDING HVAC
SHEET 92 OF 111

11-50

OVGOISA & OVGOISB
STANDBY GAS TREATMENT SYSTEM
EQUIPMENT TRAINS A & B
K-2900

OVGO2CA & OVGO2CB
STANDBY GAS TREATMENT SYSTEM
FANS A & B
K-2900

OVGO3CA & OVGO3CB
STANDBY GAS TREATMENT SYSTEM
STANDBY COOLING AIR FANS A & B
K-2900

OVGO4AA & OVGO4AB
STANDBY GAS TREATMENT SYSTEM
ELECTRIC HEATERS A & B
K-2900

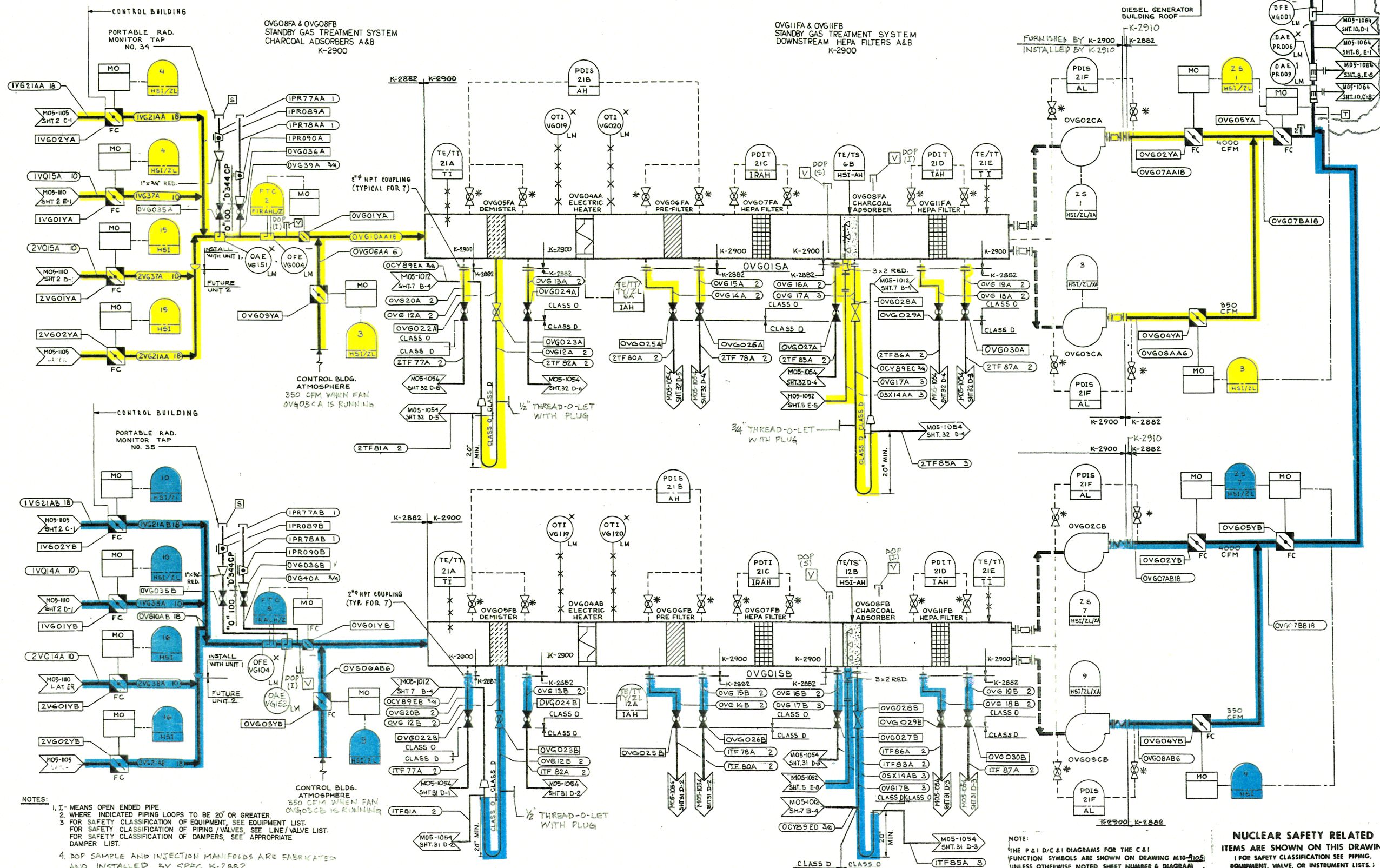
OVGO5FA & OVGO5FB
STANDBY GAS TREATMENT SYSTEM
DEMISTERS A & B
K-2900

OVGO6FA & OVGO6FB
STANDBY GAS TREATMENT SYSTEM
PRE-FILTERS A & B
K-2900

OVGO7FA & OVGO7FB
STANDBY GAS TREATMENT SYSTEM
UP STREAM HEPA FILTERS A & B
K-2900

COMMON
STATION VENT
DIESEL GENERATOR
BUILDING ROOF

OVGO9A 18
FT-UITX
2.5



NOTES:
1. I - MEANS OPEN ENDED PIPE
2. WHERE INDICATED PIPING LOOPS TO BE 20' OR GREATER.
3. FOR SAFETY CLASSIFICATION OF EQUIPMENT, SEE EQUIPMENT LIST.
FOR SAFETY CLASSIFICATION OF PIPING/VALVES, SEE LINE/VALVE LIST.
FOR SAFETY CLASSIFICATION OF DAMPERS, SEE APPROPRIATE DAMPER LIST.
4. DOP SAMPLE AND INJECTION MANIFOLDS ARE FABRICATED AND INSTALLED BY SPEC K-2882.

NOTE:
THE P&ID/C&I DIAGRAMS FOR THE C&I
FUNCTION SYMBOLS ARE SHOWN ON DRAWING M10-105
UNLESS OTHERWISE NOTED, SHEET NUMBER & DIAGRAM
REFERENCE ARE SHOWN IN THE FUNCTION SYMBOL.

**NUCLEAR SAFETY RELATED
ITEMS ARE SHOWN ON THIS DRAWING
(FOR SAFETY CLASSIFICATION SEE PIPING,
EQUIPMENT, VALVE, OR INSTRUMENT LISTS.)**

**CLINTON POWER STATION
UPDATED SAFETY ANALYSIS REPORT**

**FIGURE 3.6-1
DIVISIONAL SEPARATION AND
HIGH-ENERGY P&ID'S
STANDBY GAS TREATMENT SYSTEM
SHEET 93 OF 111**

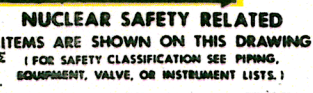


FIGURE 3.6-1
DIVISIONAL SEPARATION AND
HIGH-ENERGY P&ID'S-
STANDBY GAS TREATMENT SYSTEM
SHEET 94 OF 111

9011-1106

IVHO1CA
SSW PUMP
ROOM A
SUPPLY FAN
K-2904

IVHO1AA,B
SSW PUMP
ROOM A
COOLING COILS
K-2902

IVHO1CC
SSW PUMP
ROOM C
SUPPLY FAN
K-2904

IVHO3A
SSW PUMP
ROOM C
COOLING COIL
K-2902

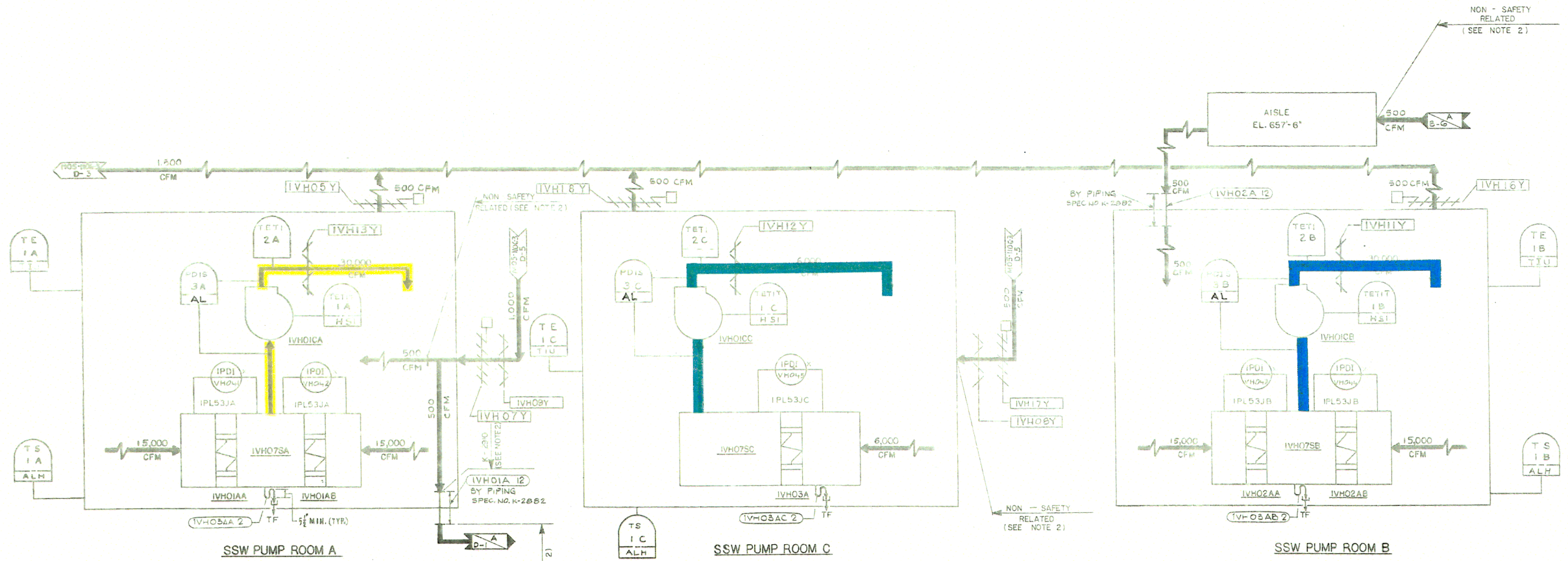
IVHO7SA
SSW PUMP
ROOM A
COIL CABINET
K-2902

IVHO7SB
SSW PUMP
ROOM B
COIL CABINET
K-2902

IVHO7SC
SSW PUMP
ROOM C
COIL CABINET
K-2902

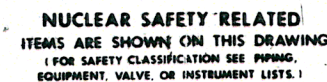
IVHO1CB
SSW PUMP
ROOM B
SUPPLY FAN
K-2904

IVHO2AA,B
SSW PUMP
ROOM B
COOLING COILS
K-2902



NUCLEAR SAFETY RELATED
ITEMS ARE SHOWN ON THIS DRAWING
(FOR SAFETY CLASSIFICATION SEE PIPING,
EQUIPMENT, VALVE, OR INSTRUMENT LISTS.)

- NOTES:**
- 1 THE P&ID/C&I DIAGRAMS FOR THE C&I FUNCTION SYMBOLS ARE SHOWN ON DRAWING M10-9106 UNLESS OTHERWISE NOTED SHEET NUMBER & DIAGRAM REFERENCE ARE SHOWN IN THE FUNCTION SYMBOL.
 - 2 NUCLEAR SAFETY-RELATED DUCTWORK SYSTEM IS SHOWN ON THIS P&ID. THIS CLASSIFICATION APPLIES TO DUCTWORK AND DUCTWORK ACCESSORIES (EXCEPT DAMPERS) FURNISHED, FABRICATED AND INSTALLED UNDER SPECIFICATION K-2910. FOR SAFETY CLASSIFICATION OF DUCTWORK SUPPORTS, SEE SUPPORT DRAWINGS. FOR SAFETY CLASSIFICATION OF EQUIPMENT, SEE EQUIPMENT LIST. FOR SAFETY CLASSIFICATION OF PIPING/VALVES SEE LINE/VALVE LIST. FOR SAFETY CLASSIFICATION OF DAMPERS, SEE APPROPRIATE DAMPER LIST.

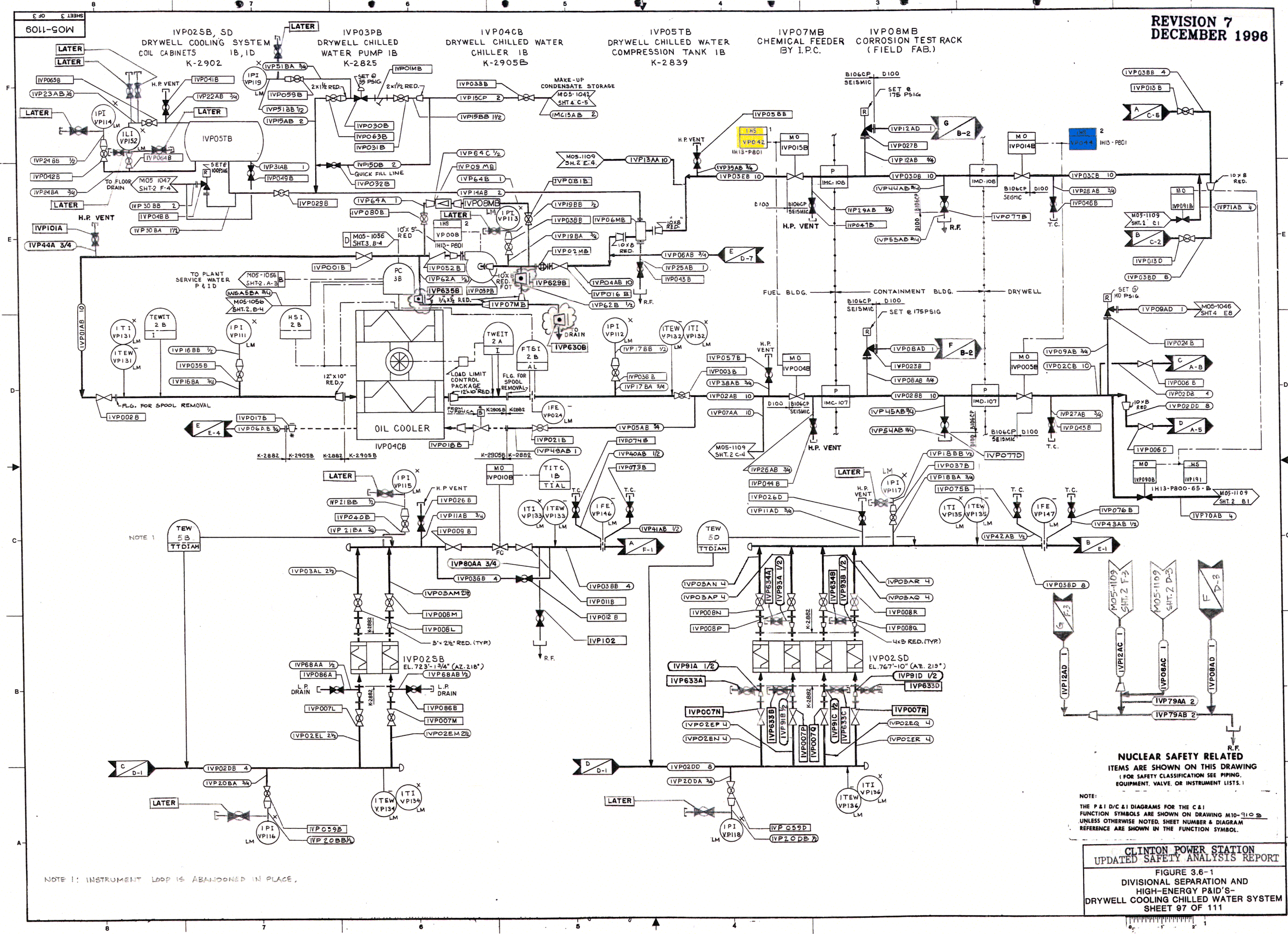


NOTE:
THE P & I D/C & I DIAGRAMS FOR THE C & I
FUNCTION SYMBOLS ARE SHOWN ON DRAWING M10-9109
UNLESS OTHERWISE NOTED. SHEET NUMBER & DIAGRAM
REFERENCE ARE SHOWN IN THE FUNCTION SYMBOL.

NOTE: 1) INSTRUMENT LOOP IS ABANDONED IN PLACE

CLINTON POWER STATION
UPDATED SAFETY ANALYSIS REPORT

FIGURE 3.6-1
 DIVISIONAL SEPARATION AND
 HIGH-ENERGY P&ID'S-
 DRYWELL COOLING CHILLED WATER SYSTEM
 SHEET 96 OF 111

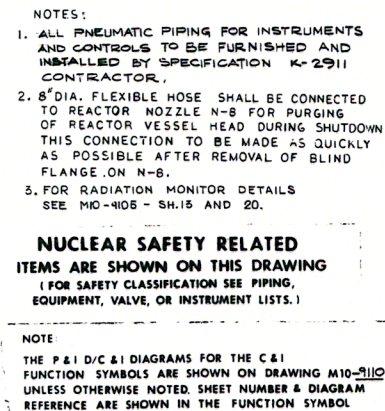


NUCLEAR SAFETY RELATED
ITEMS ARE SHOWN ON THIS DRAWING
(FOR SAFETY CLASSIFICATION SEE PIPING,
EQUIPMENT, VALVE, OR INSTRUMENT LISTS.)

NOTE:
THE P&ID/C&I DIAGRAMS FOR THE C&I
FUNCTION SYMBOLS ARE SHOWN ON DRAWING M10-101-01
UNLESS OTHERWISE NOTED. SHEET NUMBER & DIAGRAM
REFERENCE ARE SHOWN IN THE FUNCTION SYMBOL.

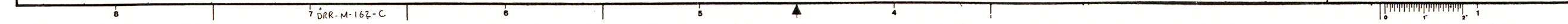
CLINTON POWER STATION
UPDATED SAFETY ANALYSIS REPORT

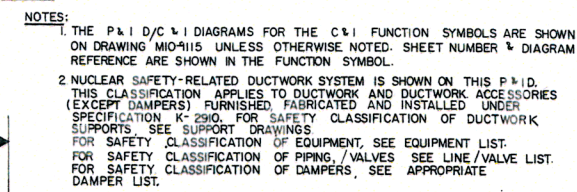
FIGURE 3.6-1
DIVISIONAL SEPARATION AND
HIGH-ENERGY P&ID'S
DRYWELL COOLING CHILLED WATER SYSTEM
SHEET 97 OF 111



CLINTON POWER STATION
UPDATED SAFETY ANALYSIS REPORT

FIGURE 3.6-1
DIVISIONAL SEPARATION AND
HIGH-ENERGY P&ID'S-
DRYWELL PURGE
SHEET 98 OF 111





CLINTON POWER STATION UPDATED SAFETY ANALYSIS REPORT

FIGURE 3.6-1
DIVISIONAL SEPARATION AND
HIGH-ENERGY P&ID'S-
ESSENTIAL SWITCHGEAR HEAT REMOVAL
SHEET 100 OF 111