

ADMINISTRATIVE CONTROLS

6.2.3 INDEPENDENT SAFETY ENGINEERING GROUP (ISEG)

FUNCTION

6.2.3.1 The ISEG shall function to examine plant operating characteristics, NRC issuances, industry advisories, Licensee Event Reports, and other sources of plant design and operating experience information, including plants of similar design, which may indicate areas for improving plant safety.

COMPOSITION

6.2.3.2 The ISEG shall be composed of at least five, dedicated, full-time engineers located on site. Each shall have a Bachelor's Degree in engineering or related science and at least two years professional level experience in his field.

RESPONSIBILITIES

6.2.3.3 The ISEG shall be responsible for maintaining surveillance of plant activities to provide independent verification* that these activities are performed correctly to reduce human errors as much as practical, and to detect potential nuclear safety hazards.

AUTHORITY

6.2.3.4 The ISEG shall make detailed recommendations for revised procedures, equipment modifications, maintenance activities, operations activities or other means of improving plant safety to the Director, Nuclear Safety and Licensing, Plant Manager, and the Manager, Nuclear Safety Group (NSG).

RECORDS

6.2.3.5 Records of activities performed by the ISEG shall be prepared, maintained, and forwarded each calendar month to the Director, Nuclear Safety and Licensing.

6.2.4 SHIFT TECHNICAL ADVISOR

6.2.4.1 The Shift Technical Advisor (STA) shall provide advisory technical support to the Shift Supervisor in the areas of thermal hydraulics, reactor engineering, and plant analysis with regard to the safe operation of the unit. The STA shall be onsite and shall be available in the control room within 10 minutes whenever one or more units are in MODE 1, 2, 3, or 4.

6.3 UNIT STAFF QUALIFICATIONS

6.3.1 Each member of the unit staff shall meet or exceed the minimum qualifications of ANS 3.1-1978 and Regulatory Guide 1.8, September 1975, except for the Radiation Protection and Chemistry Manager who shall meet or exceed the qualifications of Regulatory Guide 1.8, September 1975, and the Shift Technical Advisor who shall have a bachelor's degree or equivalent in a scientific or engineering discipline with specific training in plant design and plant operating characteristics, including transients and accidents.

INSERT

*Not responsible for sign-off function.

INSERT

An additional exception is that the Senior Reactor Operator (SRO) license requirement for the Operations Manager shall be met if either the Operations Manager or the Operations Supervisor holds a valid SRO license. The holder of the SRO license shall direct the licensed activities of the licensed operators.

[The page contains extremely faint and illegible text, likely due to poor scan quality or intentional redaction. Two large black circular marks are visible at the top of the page.]

ADMINISTRATIVE CONTROLS

6.2.3 INDEPENDENT SAFETY ENGINEERING GROUP (ISEG)

FUNCTION

6.2.3.1 The ISEG shall function to examine plant operating characteristics, NRC issuances, industry advisories, Licensee Event Reports, and other sources of plant design and operating experience information, including plants of similar design, which may indicate areas for improving plant safety.

COMPOSITION

6.2.3.2 The ISEG shall be composed of at least five, dedicated, full-time engineers located on site. Each shall have a Bachelor's Degree in engineering or related science and at least two years professional level experience in his field.

RESPONSIBILITIES

6.2.3.3 The ISEG shall be responsible for maintaining surveillance of plant activities to provide independent verification* that these activities are performed correctly to reduce human errors as much as practical, and to detect potential nuclear safety hazards.

AUTHORITY

6.2.3.4 The ISEG shall make detailed recommendations for revised procedures, equipment modifications, maintenance activities, operations activities or other means of improving plant safety to the Director, Nuclear Safety and Licensing, Plant Manager, and the Manager, Nuclear Safety Group (NSG).

RECORDS

6.2.3.5 Records of activities performed by the ISEG shall be prepared, maintained, and forwarded each calendar month to the Director, Nuclear Safety and Licensing.

6.2.4 SHIFT TECHNICAL ADVISOR

6.2.4.1 The Shift Technical Advisor (STA) shall provide advisory technical support to the Shift Supervisor in the areas of thermal hydraulics, reactor engineering, and plant analysis with regard to the safe operation of the unit. The STA shall be onsite and shall be available in the control room within 10 minutes whenever one or more units are in MODE 1, 2, 3, or 4.

6.3 UNIT STAFF QUALIFICATIONS

6.3.1 Each member of the unit staff shall meet or exceed the minimum qualifications of ANS 3.1-1978 and Regulatory Guide 1.8, September 1975, except for the Radiation Protection and Chemistry Manager who shall meet or exceed the qualifications of Regulatory Guide 1.8, September 1975, and the Shift Technical Advisor who shall have a bachelor's degree or equivalent in a scientific or engineering discipline with specific training in plant design and plant operating characteristics, including transients and accidents.

INSERT

*Not responsible for sign-off function.

INSERT

An additional exception is that the Senior Reactor Operator (SRO) license requirement for the Operations Manager shall be met if either the Operations Manager or the Operations Supervisor holds a valid SRO license. The holder of the SRO license shall direct the licensed activities of the licensed operators.

ADMINISTRATIVE CONTROLS

6.2.3 INDEPENDENT SAFETY ENGINEERING GROUP (ISEG)

FUNCTION

6.2.3.1 The ISEG shall function to examine plant operating characteristics, NRC issuances, industry advisories, Licensee Event Reports, and other sources of plant design and operating experience information, including plants of similar design, which may indicate areas for improving plant safety.

COMPOSITION

6.2.3.2 The ISEG shall be composed of at least five, dedicated, full-time engineers located on site. Each shall have a Bachelor's Degree in engineering or related science and at least two years professional level experience in his field.

RESPONSIBILITIES

6.2.3.3 The ISEG shall be responsible for maintaining surveillance of plant activities to provide independent verification* that these activities are performed correctly to reduce human errors as much as practical, and to detect potential nuclear safety hazards.

AUTHORITY

6.2.3.4 The ISEG shall make detailed recommendations for revised procedures, equipment modifications, maintenance activities, operations activities or other means of improving plant safety to the Director, Nuclear Safety and Licensing, Plant Manager, and the Manager, Nuclear Safety Group (NSG).

RECORDS

6.2.3.5 Records of activities performed by the ISEG shall be prepared, maintained, and forwarded each calendar month to the Director, Nuclear Safety and Licensing.

6.2.4 SHIFT TECHNICAL ADVISOR

6.2.4.1 The Shift Technical Advisor (STA) shall provide advisory technical support to the Shift Supervisor in the areas of thermal hydraulics, reactor engineering, and plant analysis with regard to the safe operation of the unit. The STA shall be onsite and shall be available in the control room within 10 minutes whenever one or more units are in MODE 1, 2, 3, or 4.

6.3 UNIT STAFF QUALIFICATIONS

6.3.1 Each member of the unit staff shall meet or exceed the minimum qualifications of ANS 3.1-1978 and Regulatory Guide 1.8, September 1975, except for the Radiation Protection and Chemistry Manager who shall meet or exceed the qualifications of Regulatory Guide 1.8, September 1975, and the Shift Technical Advisor who shall have a bachelor's degree or equivalent in a scientific or engineering discipline with specific training in plant design and plant operating characteristics, including transients and accidents.

INSERT

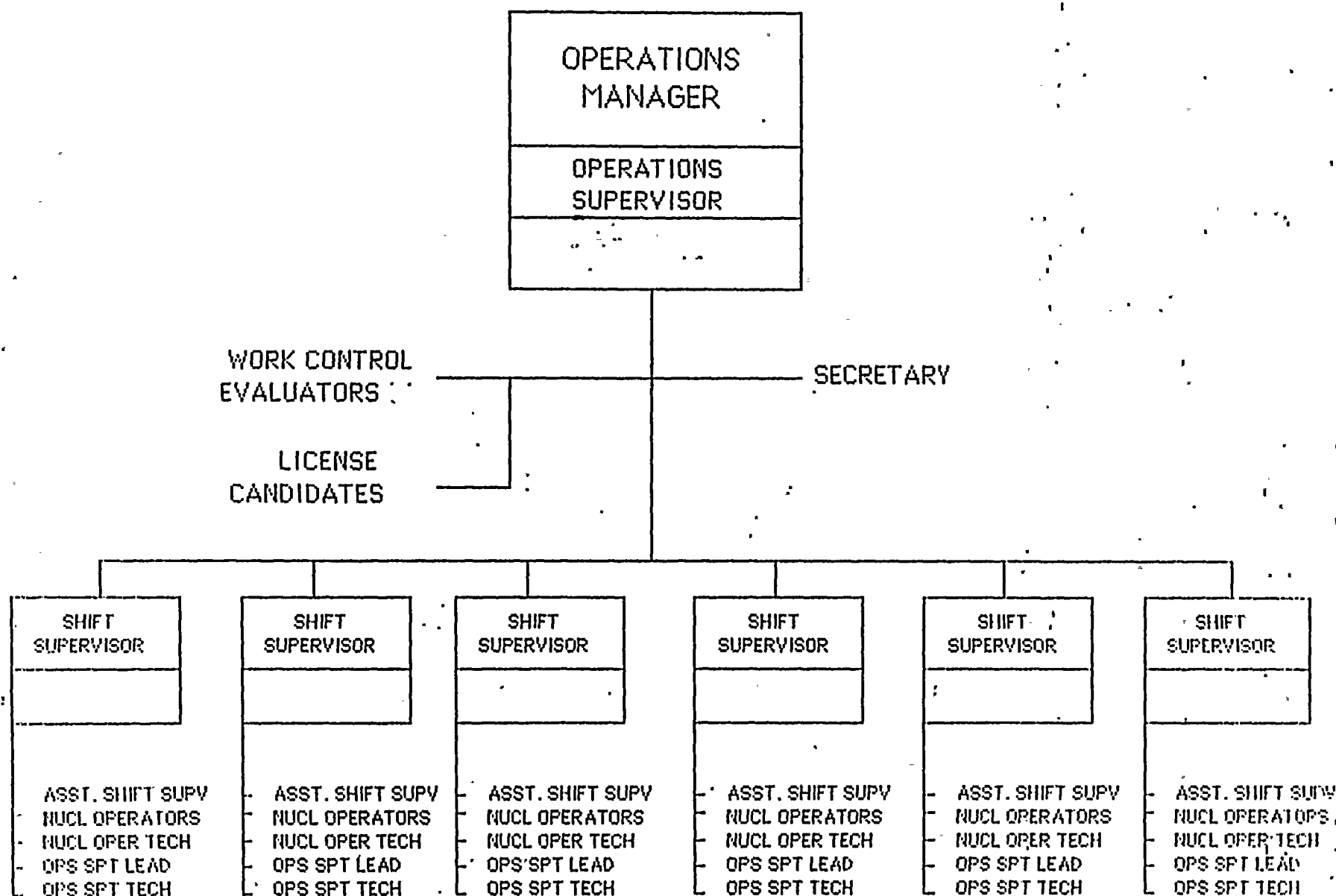
Not responsible for sign-off function.

INSERT

An additional exception is that the Senior Reactor Operator (SRO) license requirement for the Operations Manager shall be met if either the Operations Manager or the Operations Supervisor holds a valid SRO license. The holder of the SRO license shall direct the licensed activities of the licensed operators.

ATTACHMENT 2

- 1) Unit Operations Department Organization Chart
- 2) Position Summary for Operations Supervisor





OPERATIONS SUPERVISOR

The Operations Supervisor assists and acts as the principal alternate to the Operations Manager. He coordinates the activities and performance of the Shift Supervisors to ensure that the conduct of the operating staff is consistent with protection of the health and safety of the public and is in compliance with all applicable rules, regulations and procedures. He ensures that identified plant deficiencies receive the appropriate work priority to maintain plant reliability. He reviews various operating logs and records for accuracy, completeness, adherence to applicable administrative procedures, regulations and Technical Specifications, and to maintain current knowledge of plant activities.

