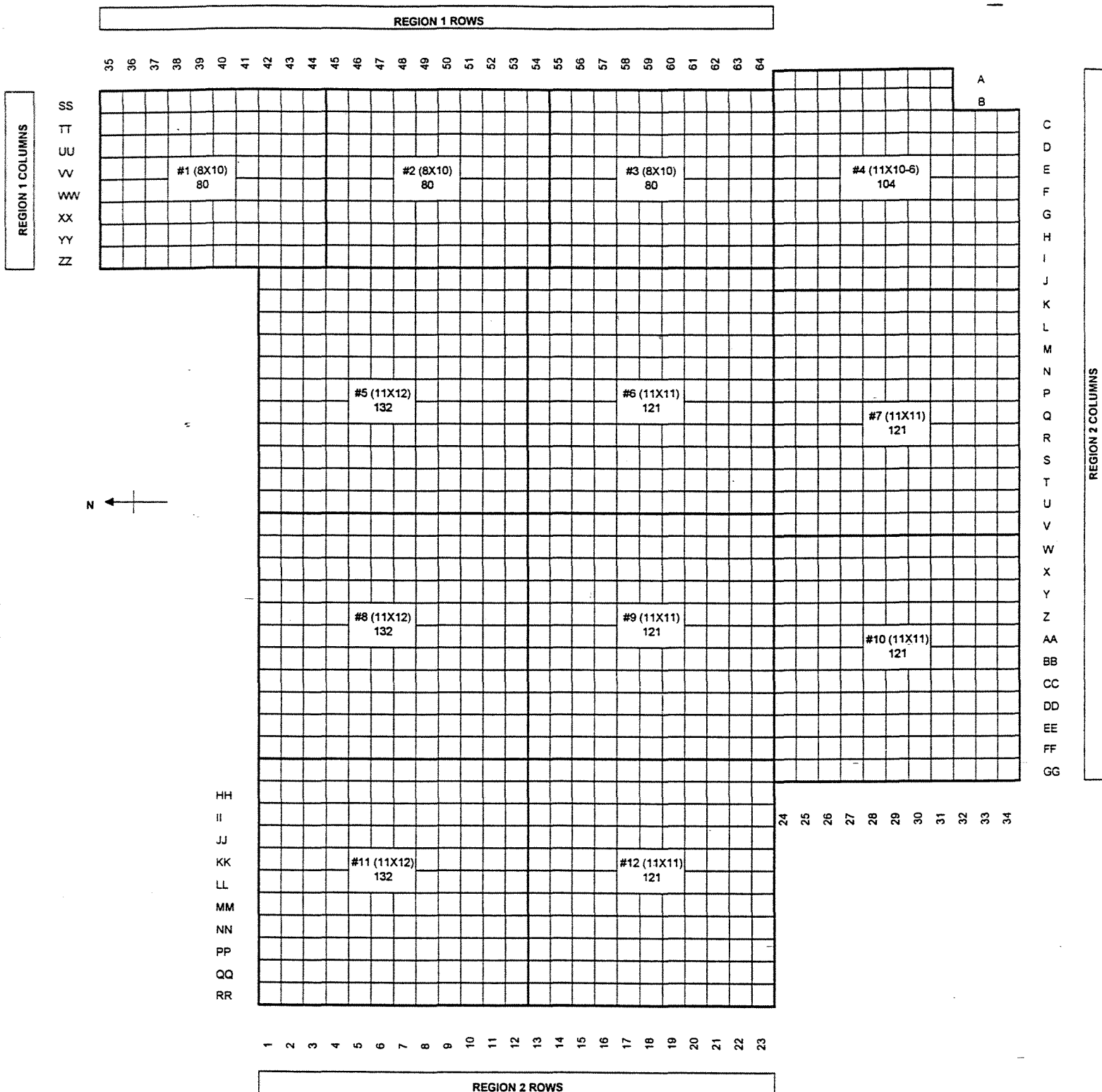


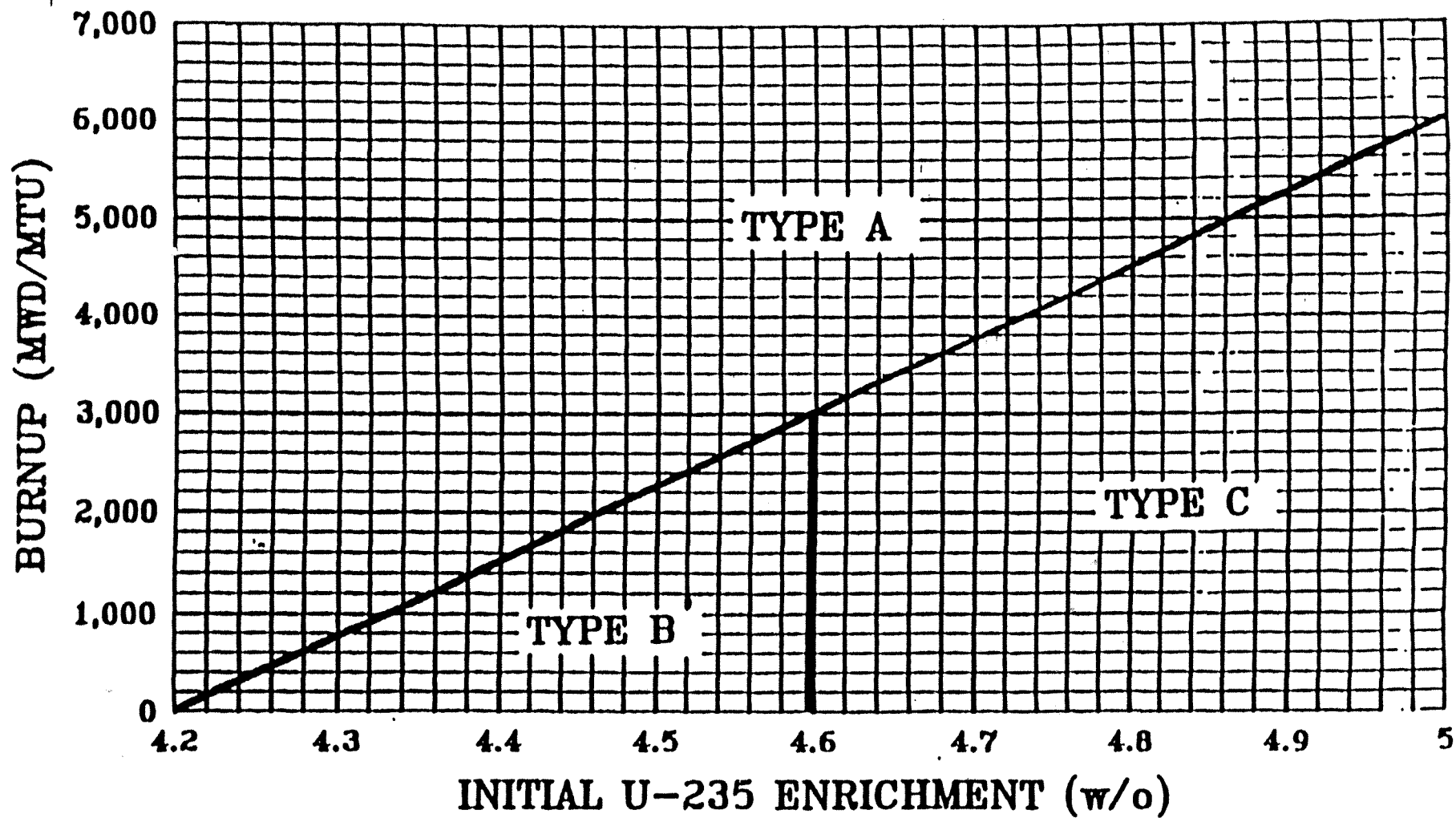
INDIAN POINT 3	FSAR UPDATE
FUEL TRANSFER SYSTEM	
REV 1 DEC 1997	FIGURE NO. 9.5-1



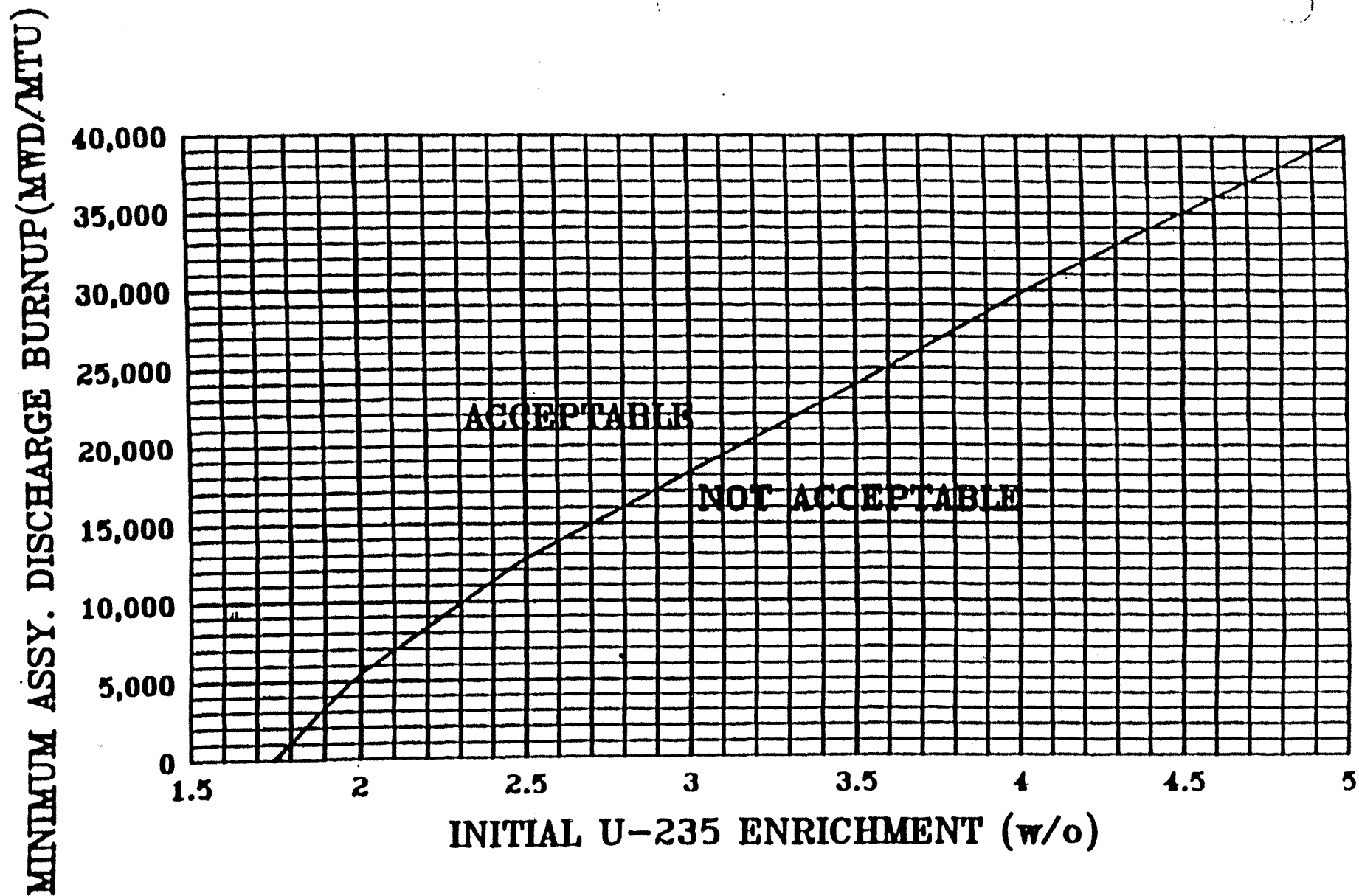
INDIAN POINT 3 FSAR UPDATE

MAXIMUM DENSITY SPENT FUEL
PIT (SPF) RACKS
REGIONS AND INDEXING

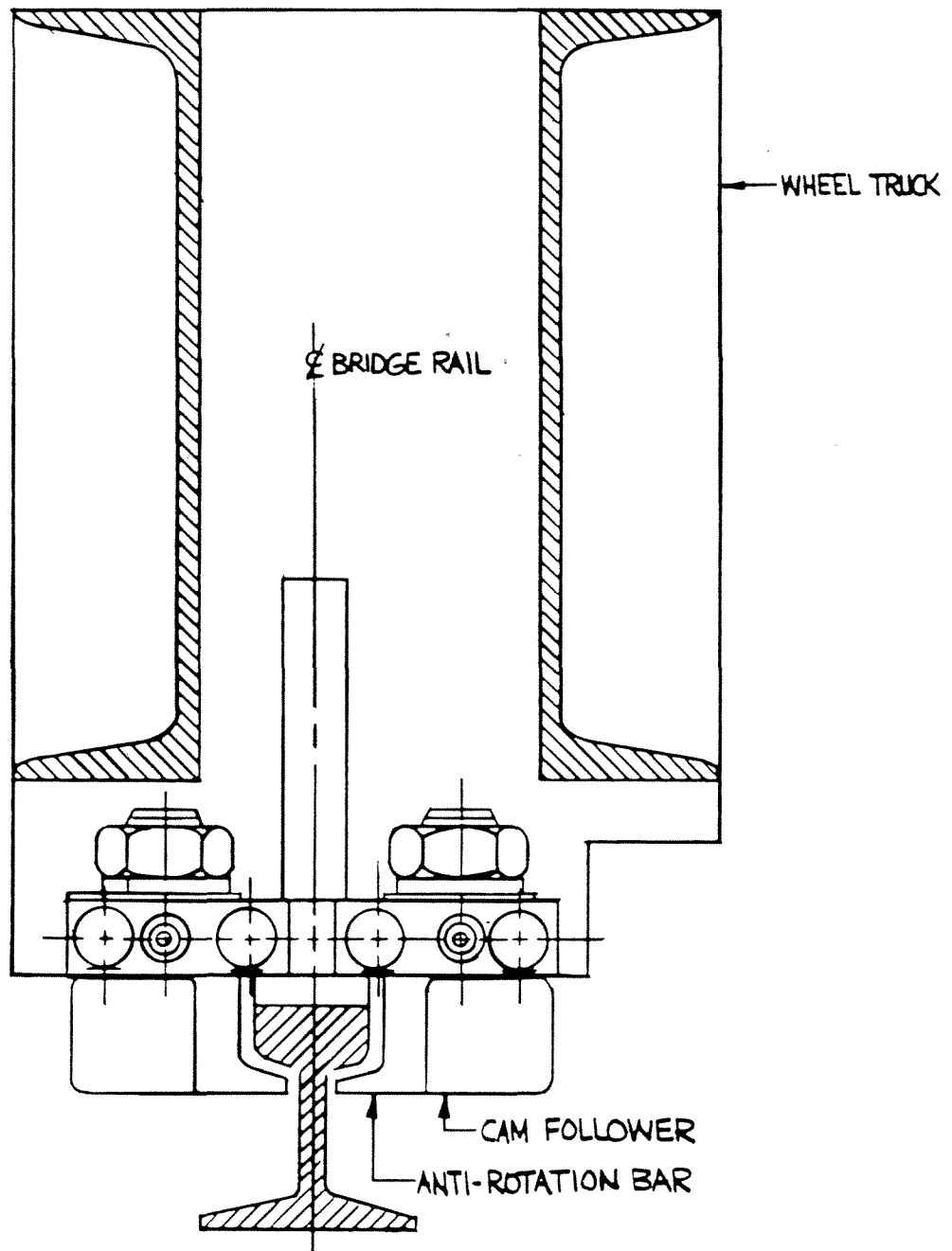
REV. 0 JUN 1999 FIGURE NO. 9.5-2A



Note: Fresh (unburned) fuel is defined as fuel with a burnup of 0 MWD/MTU.



INDIAN POINT 3	FSAR UPDATE
REGION 2 BURNUP REQUIREMENTS FOR FUEL ASSEMBLY STORAGE IN SPENT FUEL PIT	
REV. 0 JUN 1999	FIGURE NO. 9.5-2C



INDIAN POINT 3

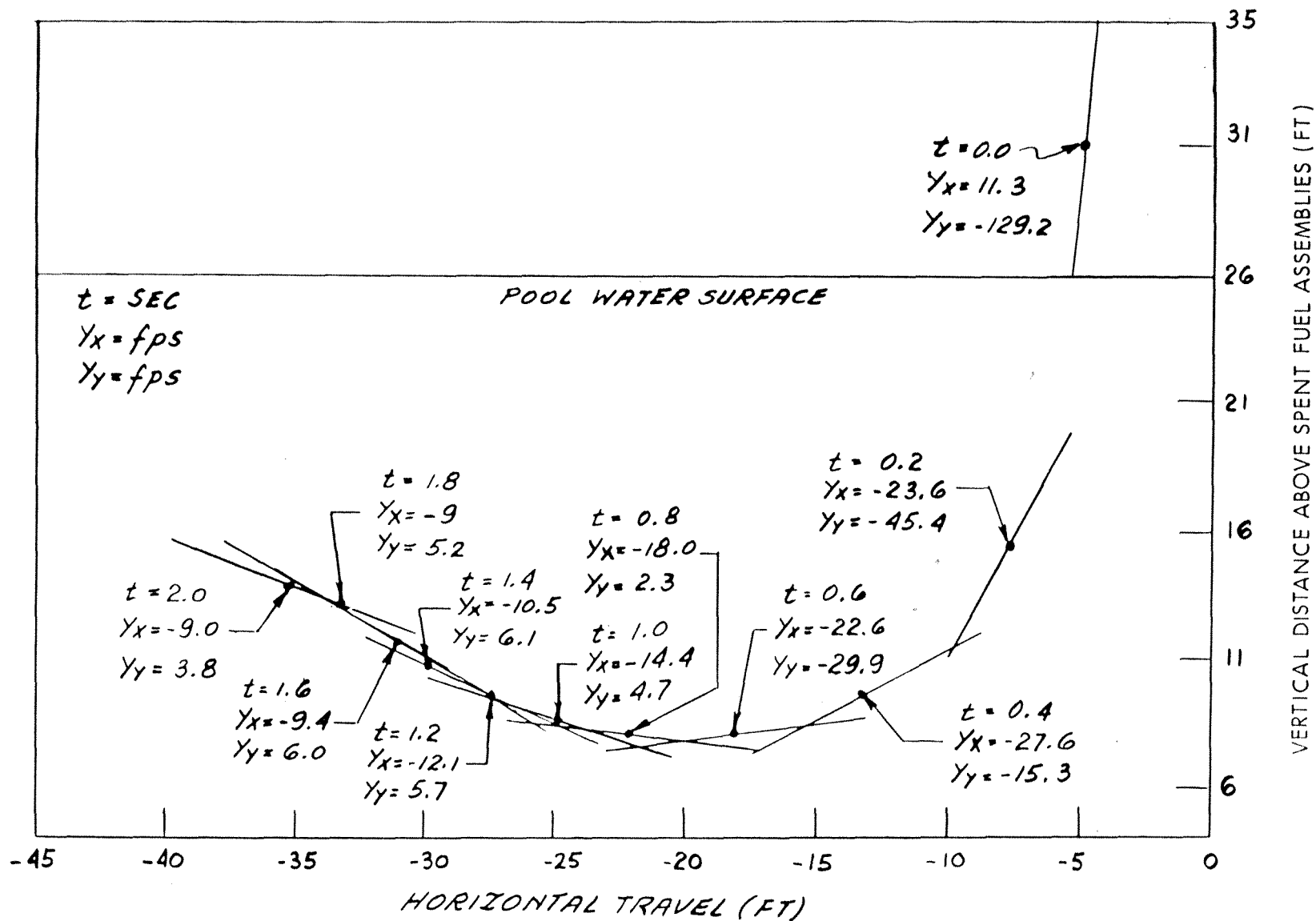
FSAR UPDATE

MANIPULATOR CRANE RESTRAINTS

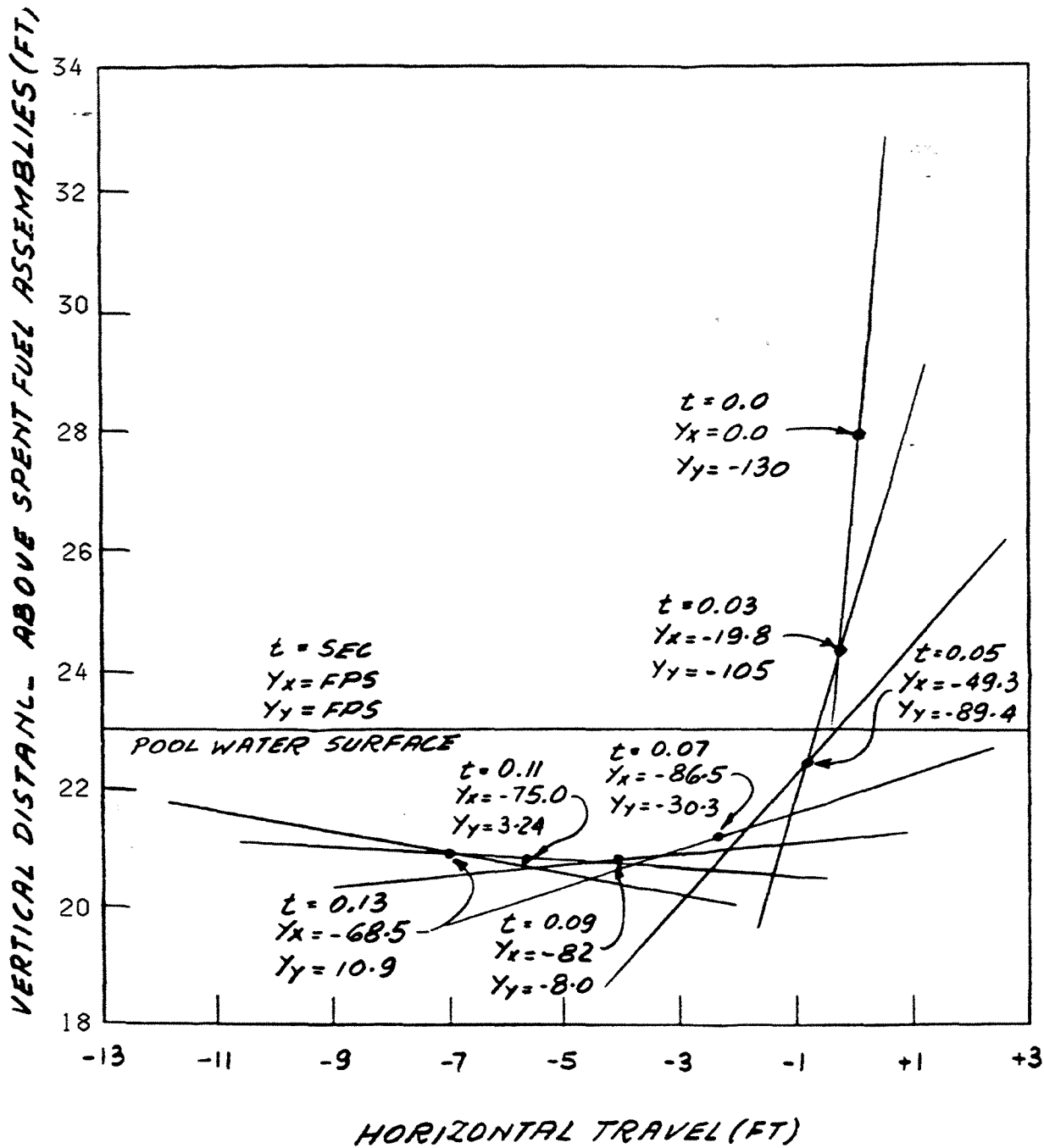
REV. 0

JULY, 1982

FIGURE NO. 9.5-3

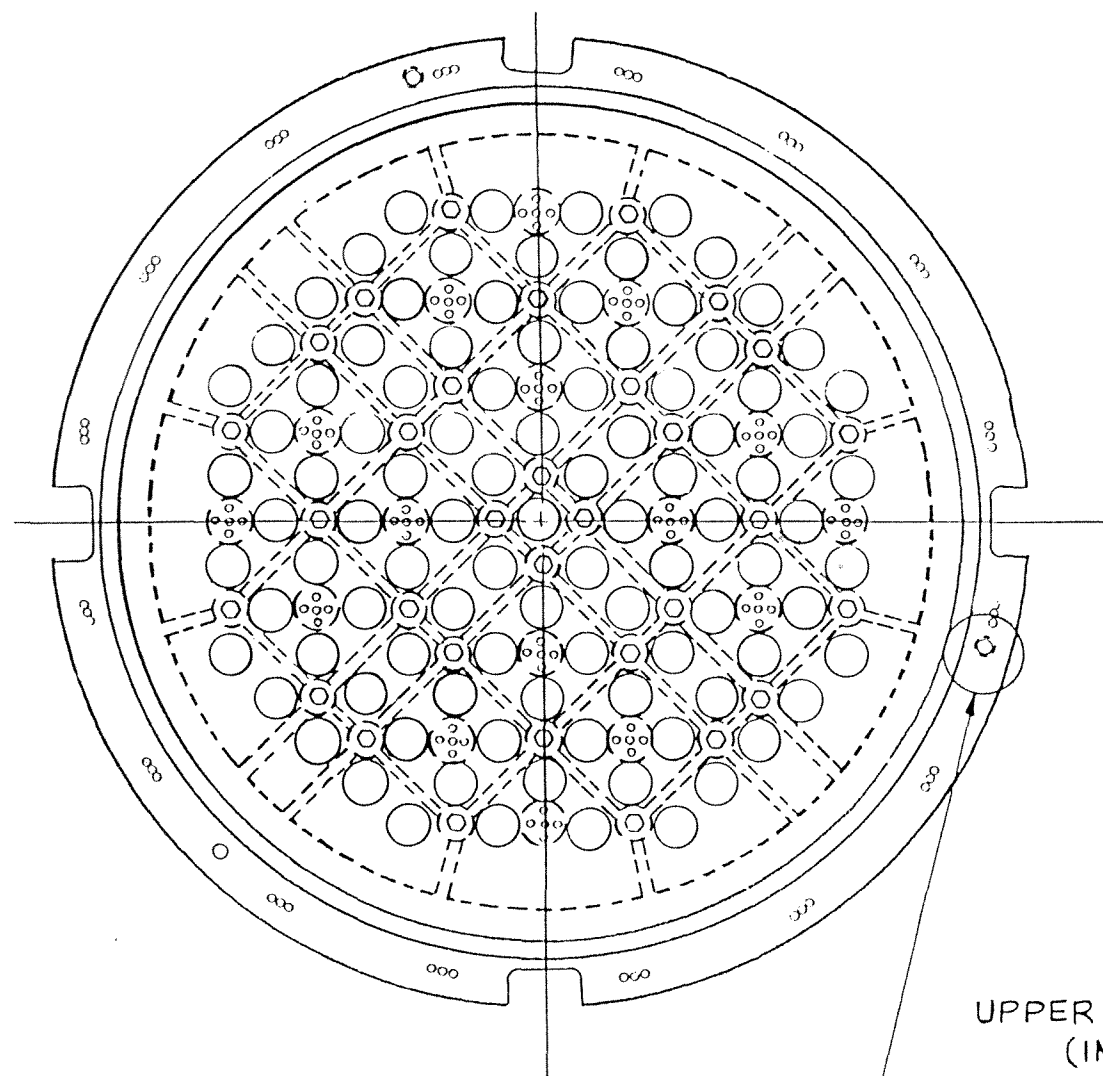


CALCULATED DECELERATION OF 130FPS WOOD PLANK WHEN INITIAL VELOCITY AND MISSILE AXIS ARE ALIGNED, 5° FROM VERTICAL



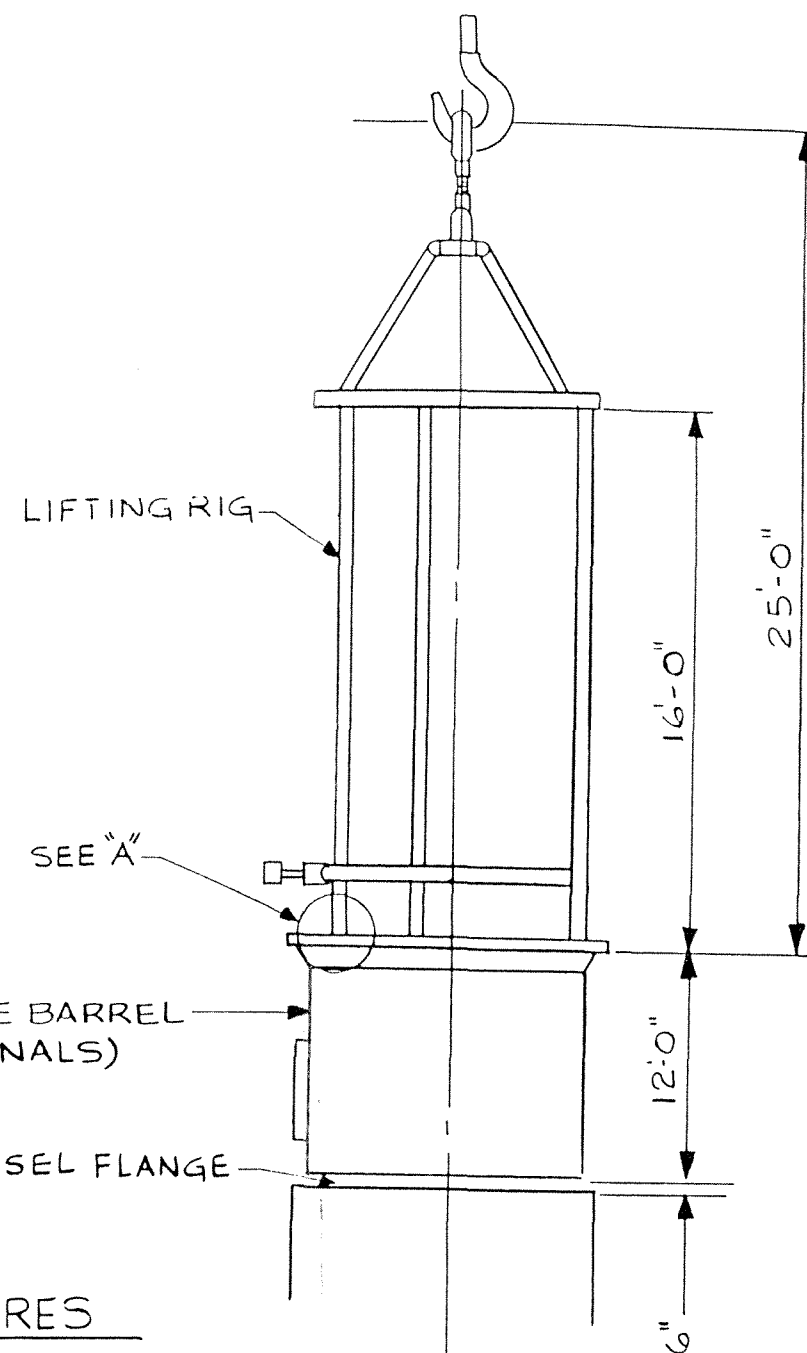
CALCULATED DECELERATION OF 130 FPS WOOD PLANK WHEN
 INITIAL VELOCITY AND MISSILE AXIS ARE MISALIGNED BY 5°

INDIAN POINT 3 FSAR UPDATE	
CALCULATED DECELERATION OF 130 FPS WOOD PLANK (MISALIGNED)	
REV. 1 JUN 2000	FIGURE 9.5-5



LIFTING HOLES "B" 3 PLACES
(TYP)

PLAN VIEW OF UPPER CORE SUPPORT STRUCTURES

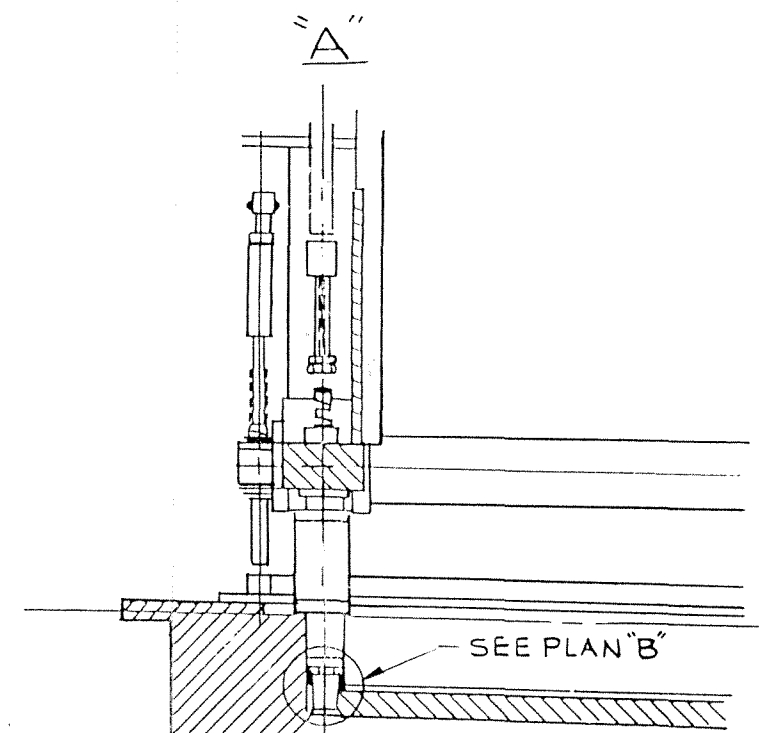


LIFTING RIG

SEE "A"

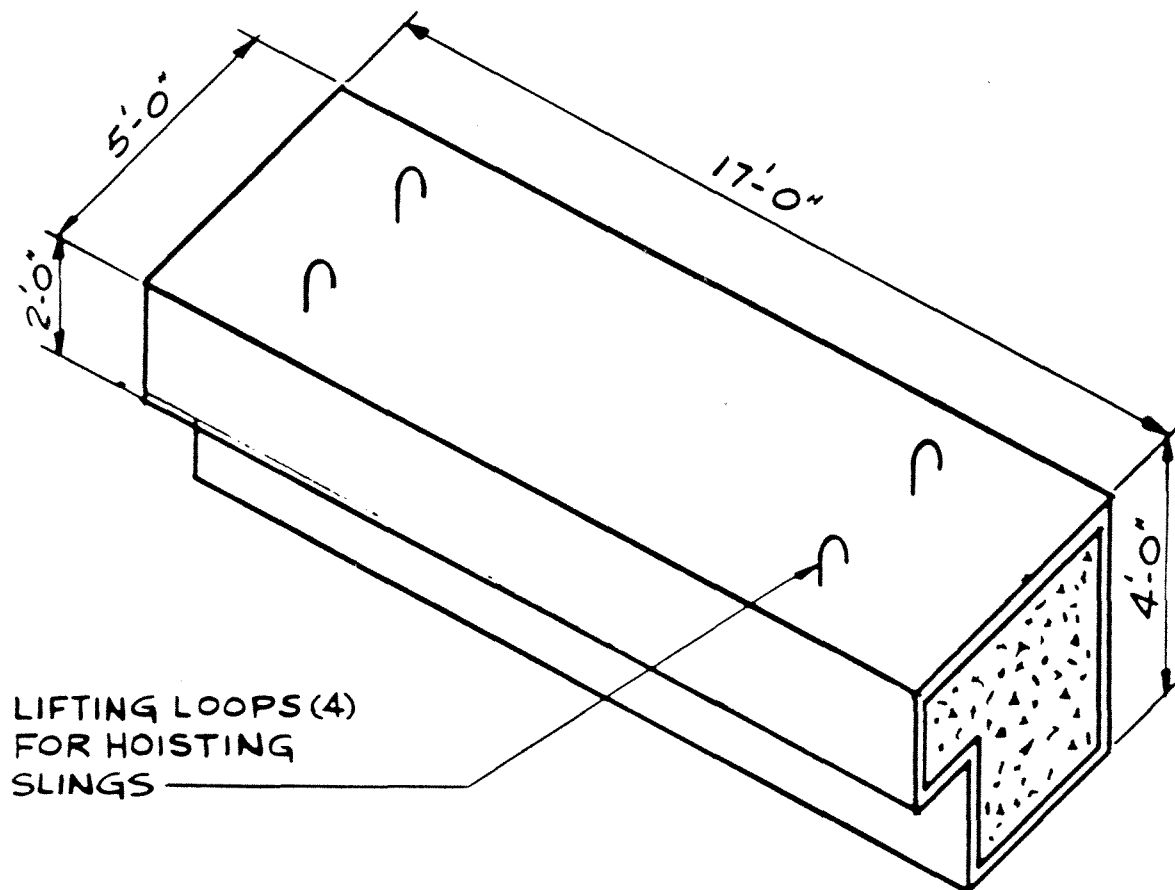
UPPER CORE BARREL
(INTERNALS)

REACTOR VESSEL FLANGE



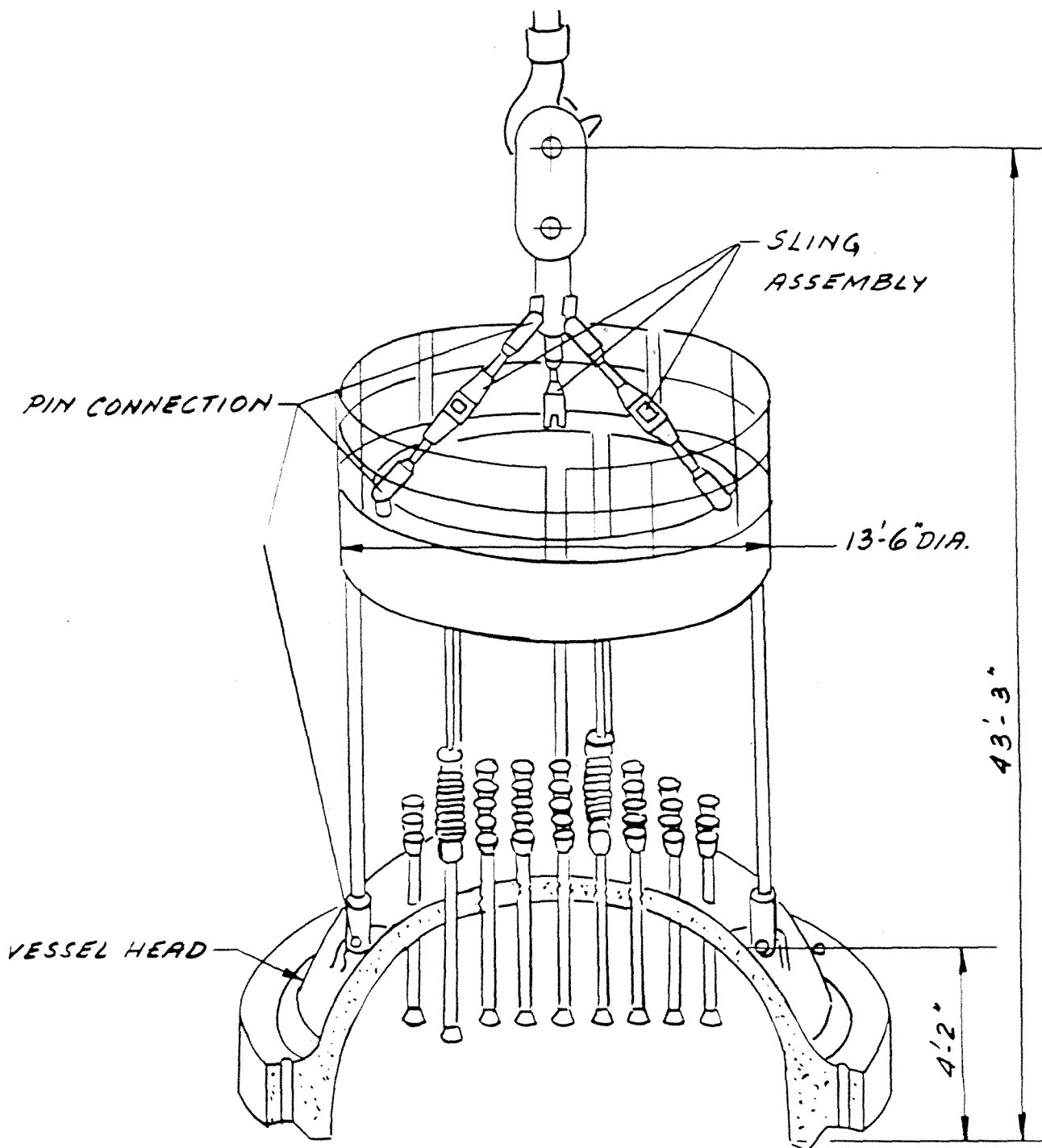
UPPER CORE BARREL HANDLING FIXTURE

INDIAN POINT 3		FSAR UPDATE
UPPER CORE SUPPORT AND HANDLING FIXTURE		
REV. 0	JULY, 1982	FIGURE NO. 9.5-6



LIFTING LOOPS (4)
FOR HOISTING
SLINGS

INDIAN POINT 3		FSAR UPDATE	
MISSILE SHIELD STRUCTURE			
REV. 0	JULY, 1982	FIGURE NO.	9.5-7



INDIAN POINT 3		FSAR UPDATE	
REACTOR VESSEL HEAD LIFTING DEVICE			
REV. 0	JULY, 1982	FIGURE NO.	9.5-8