

NOTE:
REFER TO IP3V-15-0012 FOR DIESEL MFG'S.
FLOW DIAGRAM OF FUEL OIL SYSTEM.

CLASS I PIPING
WHOLE SYSTEM CLASS I EXCEPT TRUCK
LOADING LINE INTO FUEL STORAGE TANKS.

LEGEND:
— HEAT TRACE

REFERENCE DRAWINGS:
9321-D-20163 FLOW DIAGRAM SYMBOLS
9321-F-22583 DIESEL GENERATOR BUILDING
SHEET NO. 1 FUEL OIL & JACKET WATER PIPING
IP3V-15-0012 PIPING SCHEMATIC
(FUEL OIL SYSTEM)

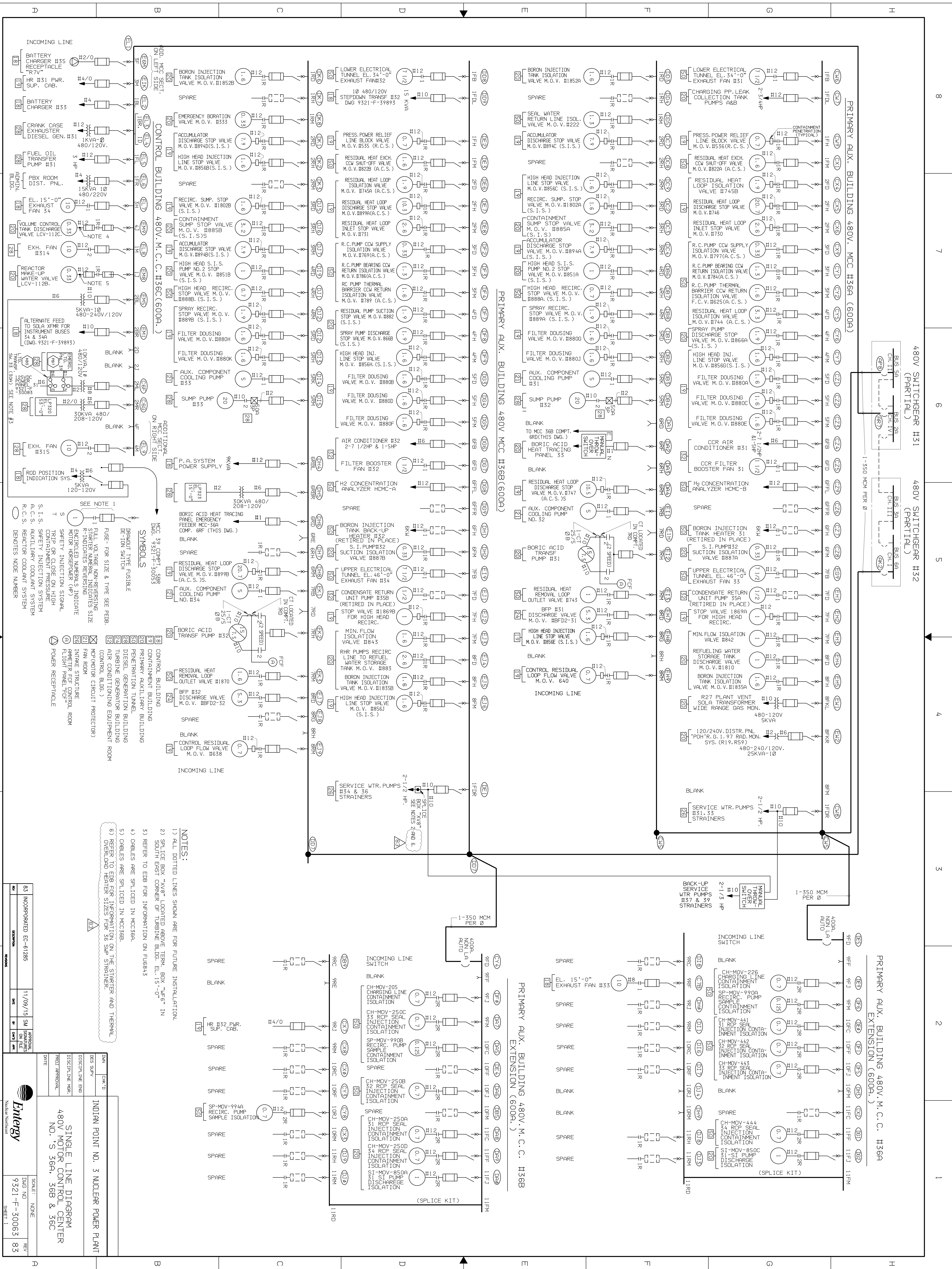
THIS IS A COMPUTER AIDED DESIGN DRAWING. A RECORD OF THE REVISIONS
OF THIS DOCUMENT WITH APPROVAL INITIALS/SIGNATURES, IS MAINTAINED
IN THE FILES OF ENTERGY NUCLEAR NORTHWEST

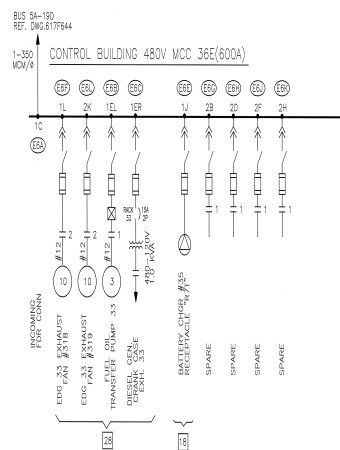
INDIAN POINT NO. 3 NUCLEAR POWER PLANT	
FLOW DIAGRAM FUEL OIL TO DIESEL GENERATORS	
SCALE: NONE	REV 30
DWG NO 9321-F-20303	SHEET










30 INCORPORATED EC-40103 4/15/13 VMR APPROVAL
DATE BY CHK'D



TYPE A/FSAR





-  DRUM TYPE FUSIBLE DE-ION SWITCH
-  FUSE, FOR SIZE & TYPE SEE PEDB
-  FULL VOLTAGE NON-REVERSING STARTER
NUMERAL INDICATES SIZE
R INDICATES REVERSING
-  ENCLOSED NUMERALS INDICATE MOTOR HORSEPOWER (HP)
-  DENOTES NODE NUMBER
-  CONTROL BUILDING
-  DIESEL BUILDING
-  MCP (MOTOR CIRCUIT PROTECTOR)
-  POWER RECEPTACLE

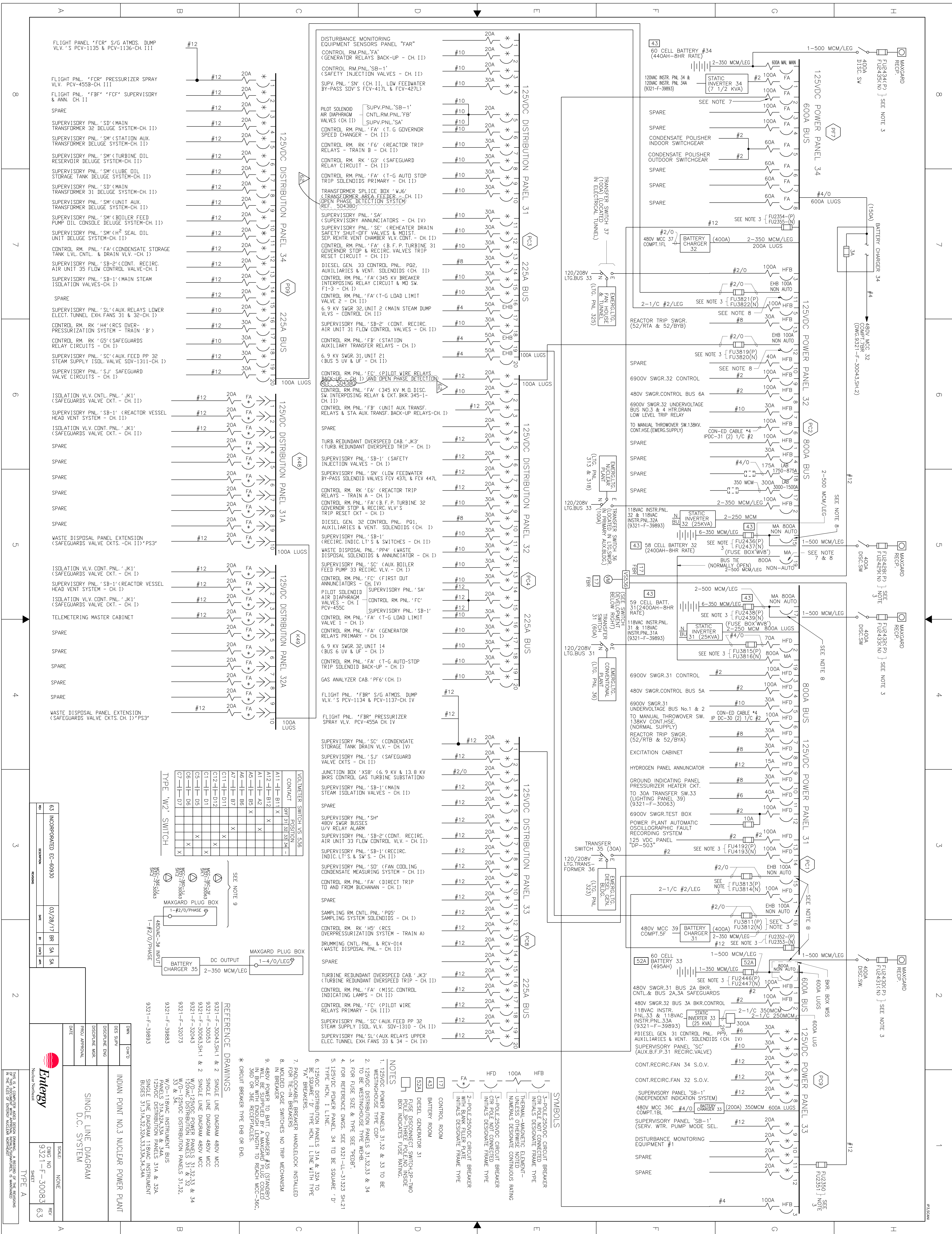
DWN	DWD	INDIAN POINT NO. 3 NUCLEAR POWER PLANT SINGLE LINE DIAGRAM 480V MOTOR CONTROL CENTER NO'S 36D & 36E	SCALE: NONE DWN NO 9321-F-30063 SHEET 2	10 REVISION
DSI				
RESPOND				
REVISION				
APPROVAL				
DATE				

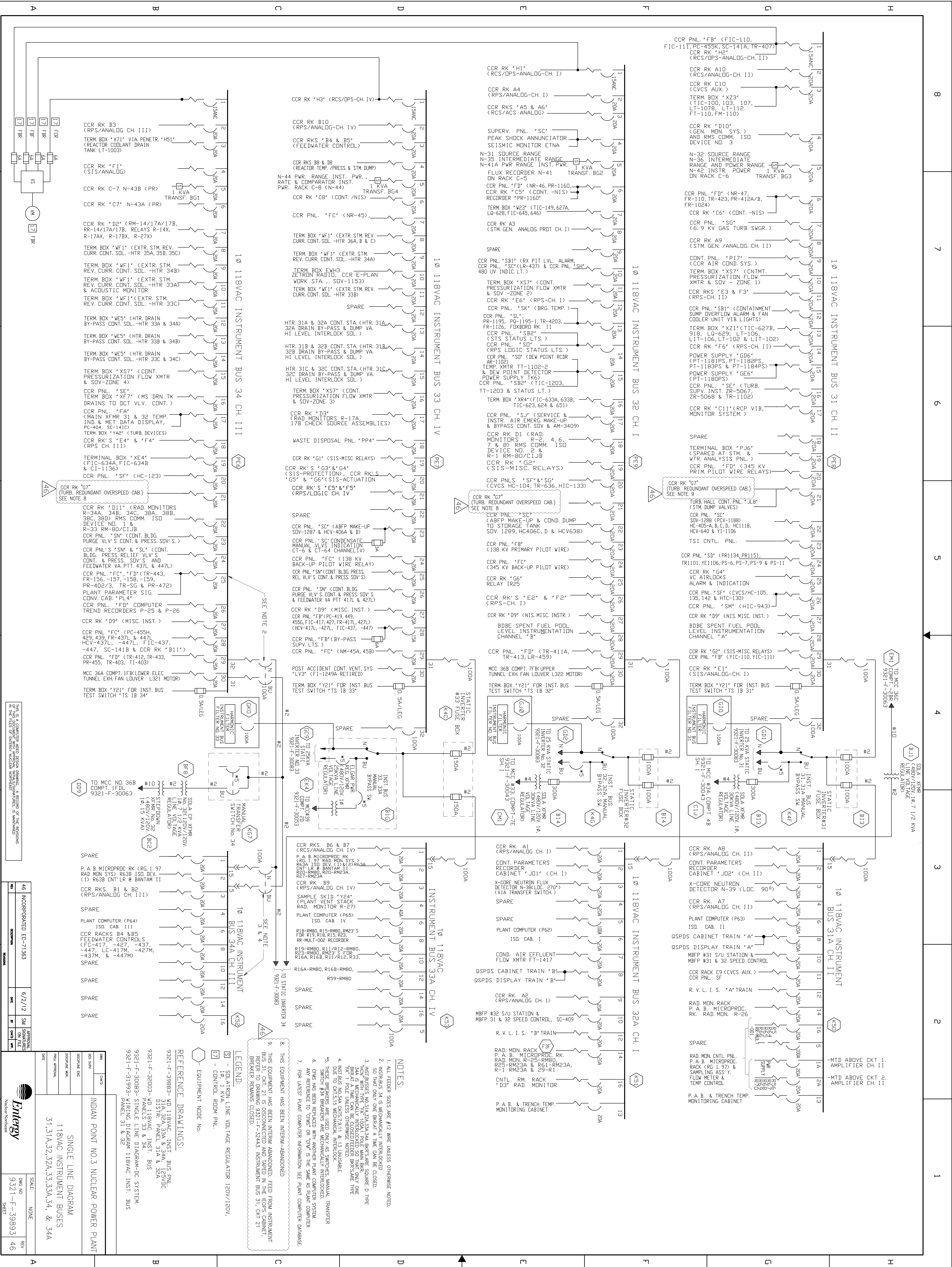
Entergy

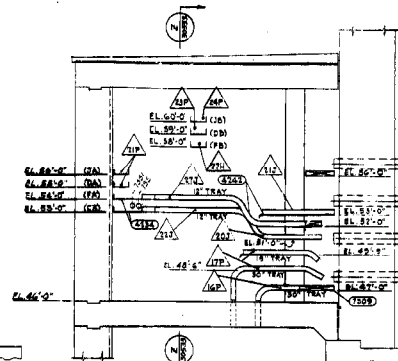
Natural Resources

THIS IS A COMPUTER AIDED DESIGN DRAWING. A RECORD OF THE REVISIONS OF THE PROJECT AND ANY OTHER REVISIONS TO THE DRAWING, IS MAINTAINED AT THE OFFICE OF ENTERGY NUCLEAR DIVISION.

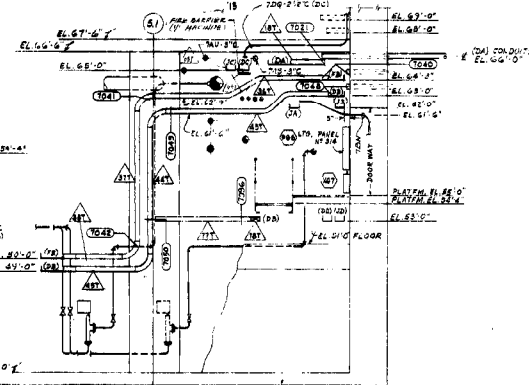
TYPE A (FSAR)





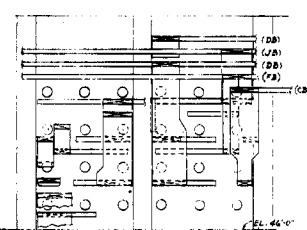


SECTION "N-N" (SEE C-10-10)



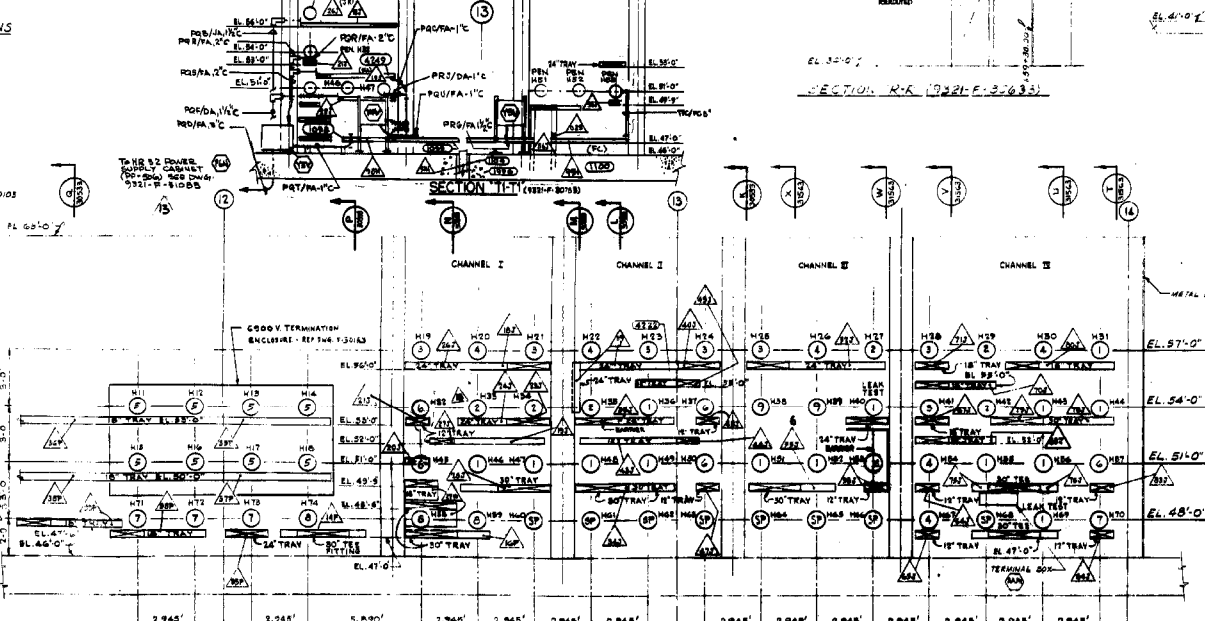
1567-1568 1569-1570 1571-1572 1573-1574 1575-1576 1577-1578 1579-1580 1581-1582 1583-1584 1585-1586 1587-1588 1589-1590 1591-1592 1593-1594 1595-1596 1597-1598 1599-1600 1601-1602 1603-1604 1605-1606 1607-1608 1609-1610 1611-1612 1613-1614 1615-1616 1617-1618 1619-1620 1621-1622 1623-1624 1625-1626 1627-1628 1629-1630 1631-1632 1633-1634 1635-1636 1637-1638 1639-1640 1641-1642 1643-1644 1645-1646 1647-1648 1649-1650 1651-1652 1653-1654 1655-1656 1657-1658 1659-1660 1661-1662 1663-1664 1665-1666 1667-1668 1669-1670 1671-1672 1673-1674 1675-1676 1677-1678 1679-1680 1681-1682 1683-1684 1685-1686 1687-1688 1689-1690 1691-1692 1693-1694 1695-1696 1697-1698 1699-1700 1701-1702 1703-1704 1705-1706 1707-1708 1709-1710 1711-1712 1713-1714 1715-1716 1717-1718 1719-1720 1721-1722 1723-1724 1725-1726 1727-1728 1729-1730 1731-1732 1733-1734 1735-1736 1737-1738 1739-1740 1741-1742 1743-1744 1745-1746 1747-1748 1749-1750 1751-1752 1753-1754 1755-1756 1757-1758 1759-1760 1761-1762 1763-1764 1765-1766 1767-1768 1769-1770 1771-1772 1773-1774 1775-1776 1777-1778 1779-1780 1781-1782 1783-1784 1785-1786 1787-1788 1789-1790 1791-1792 1793-1794 1795-1796 1797-1798 1799-1800 1801-1802 1803-1804 1805-1806 1807-1808 1809-1810 1811-1812 1813-1814 1815-1816 1817-1818 1819-1820 1821-1822 1823-1824 1825-1826 1827-1828 1829-1830 1831-1832 1833-1834 1835-1836 1837-1838 1839-1840 1841-1842 1843-1844 1845-1846 1847-1848 1849-1850 1851-1852 1853-1854 1855-1856 1857-1858 1859-1860 1861-1862 1863-1864 1865-1866 1867-1868 1869-1870 1871-1872 1873-1874 1875-1876 1877-1878 1879-1880 1881-1882 1883-1884 1885-1886 1887-1888 1889-1890 1891-1892 1893-1894 1895-1896 1897-1898 1899-1900 1901-1902 1903-1904 1905-1906 1907-1908 1909-1910 1911-1912 1913-1914 1915-1916 1917-1918 1919-1920 1921-1922 1923-1924 1925-1926 1927-1928 1929-1930 1931-1932 1933-1934 1935-1936 1937-1938 1939-1940 1941-1942 1943-1944 1945-1946 1947-1948 1949-1950 1951-1952 1953-1954 1955-1956 1957-1958 1959-1960 1961-1962 1963-1964 1965-1966 1967-1968 1969-1970 1971-1972 1973-1974 1975-1976 1977-1978 1979-1980 1981-1982 1983-1984 1985-1986 1987-1988 1989-1990 1991-1992 1993-1994 1995-1996 1997-1998 1999-2000 2001-2002 2003-2004 2005-2006 2007-2008 2009-2010 2011-2012 2013-2014 2015-2016 2017-2018 2019-2020 2021-2022 2023-2024 2025-2026 2027-2028 2029-2030 2031-2032 2033-2034 2035-2036 2037-2038 2039-2040 2041-2042 2043-2044 2045-2046 2047-2048 2049-2050 2051-2052 2053-2054 2055-2056 2057-2058 2059-2060 2061-2062 2063-2064 2065-2066 2067-2068 2069-2070 2071-2072 2073-2074 2075-2076 2077-2078 2079-2080 2081-2082 2083-2084 2085-2086 2087-2088 2089-2090 2091-2092 2093-2094 2095-2096 2097-2098 2099-2100 2101-2102 2103-2104 2105-2106 2107-2108 2109-2110 2111-2112 2113-2114 2115-2116 2117-2118 2119-2120 2121-2122 2123-2124 2125-2126 2127-2128 2129-2130 2131-2132 2133-2134 2135-2136 2137-2138 2139-2140 2141-2142 2143-2144 2145-2146 2147-2148 2149-2150 2151-2152 2153-2154 2155-2156 2157-2158 2159-2160 2161-2162 2163-2164 2165-2166 2167-2168 2169-2170 2171-2172 2173-2174 2175-2176 2177-2178 2179-2180 2181-2182 2183-2184 2185-2186 2187-2188 2189-2190 2191-2192 2193-2194 2195-2196 2197-2198 2199-2200 2201-2202 2203-2204 2205-2206 2207-2208 2209-2210 2211-2212 2213-2214 2215-2216 2217-2218 2219-2220 2221-2222 2223-2224 2225-2226 2227-2228 2229-2230 2231-2232 2233-2234 2235-2236 2237-2238 2239-2240 2241-2242 2243-2244 2245-2246 2247-2248 2249-2250 2251-2252 2253-2254 2255-2256 2257-2258 2259-2260 2261-2262 2263-2264 2265-2266 2267-2268 2269-2270 2271-2272 2273-2274 2275-2276 2277-2278 2279-2280 2281-2282 2283-2284 2285-2286 2287-2288 2289-2290 2291-2292 2293-2294 2295-2296 2297-2298 2299-2300 2301-2302 2303-2304 2305-2306 2307-2308 2309-2310 2311-2312 2313-2314 2315-2316 2317-2318 2319-2320 2321-2322 2323-2324 2325-2326 2327-2328 2329-2330 2331-2332 2333-2334 2335-2336 2337-2338 2339-2340 2341-2342 2343-2344 2345-2346 2347-2348 2349-2350 2351-2352 2353-2354 2355-2356 2357-2358 2359-2360 2361-2362 2363-2364 2365-2366 2367-2368 2369-2370 2371-2372 2373-2374 2375-2376 2377-2378 2379-2380 2381-2382 2383-2384 2385

SECTION "S-S" (9301-F-30633)



SECTION 2-2

- ⑦ CONTROL
 ⑧ TWISTED PAIRS (SHIELDED)
 ⑨ TWAIRS (SHIELDED)
 ⑩ TRAIRS
 ⑪ POWER - 5000V MOTORS
 ⑫ POWER - 4800V MOTORS
 ⑬ 800V. FEEDS MTR LEADS
 ⑭ LIGHTING - 4-5 DC
 ⑮ RED DPOA CONTROL
 ⑯ VALVED STE. DWO - 4 PSI - 4 SONGS
 ⑰ TRAILER, SEE C-6 SENG. - 3821-LL-ROD
 ⑱ TRAILER SS-6 (C)
 ⑲ LETTER-HOUSE LEVEL
 ⑳ SECOND LETTER - CHANNEL
 ㉑ BOTTOM OF TRAY
 ㉒ TRAY - 212
 ㉓ TRAY JUNCTION NODE
 ㉔ TRAY SECTION NUMBER
 ㉕ EQUIPMENT NODE NUMBER



ELEVATION "U-U" (4321-F-30633)
HFS

ELEVATION "A-A"
 IS ARC LENGTH MEASURED ON INSIDE OF LINE.
SCALE: 3/8" = 1'-0"

1. TRAY ELEVATIONS ARE TO THE BOTTOM OF TRAYS WITH 12" SPACING.
2. ALL TRAYS IN CONTAINMENT BLDG. & PENETRATION AREA TO BE RIGIDLY SUPPORTED WITH ANGLE IRON OR UNISTRUT.
3. ELECTRICAL SUB-CONTRACTOR TO "SAFE-EDGE" TRAY RIGID CABLES ENTER OR LEAVE TRAY OVER RAILS TO PREVENT DAMAGE TO CABLE INSULATION OR TRACKS.

REFERENCE DRAWINGS

FOR COMPLETE ROUTING OF CABLE, LISTING OF TRAY
JUNCTION & SECTION NODE NUMBERS SEE ENCL. 2300

WESTINGHOUSE ELECTRIC CORPORATION
ELECTRICAL PENETRATIONS & CABLE TRAYS
SECTIONS

FOR
CONSOLIDATED EDISON COMPANY
INDIAN POINT GENERATING STATION
UNIT NO. 8

9321-F-38533-13

A20242