

NOTES:

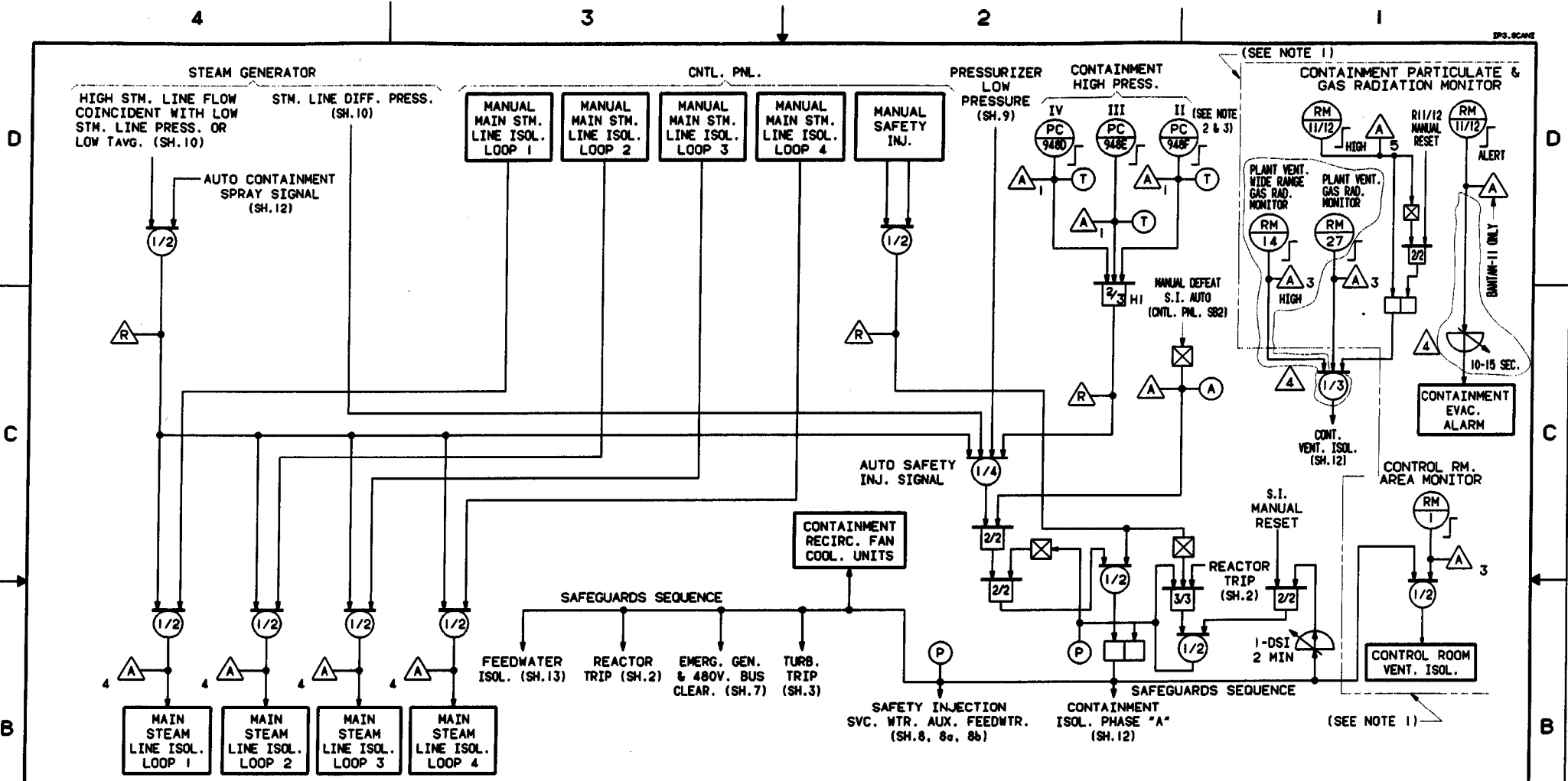
- * 1. SPRAY ACTUATION BI-STABLES ARE ENERGIZED TO ACTUATE.
- * 2. PRESSURE BI-STABLES SET TO ACTUATE AT APPROX. 22 PSIG (CONTAINMENT HIGH-HIGH PRESS.).

THIS IS A COMPUTER AIDED DESIGN DRAWING. A RECORD OF THE REVISIONS OF THIS DOCUMENT WITH APPROVAL INITIALS/SIGNATURE, IS MAINTAINED IN THE FILES OF THE AUTHORITY'S DESIGN & DRAFTING SECTION, WPO.

1984 M014

REV NO	DATE	DESCRIPTION	DM	EX	REG	TD	DR	PROJ
11		AS BUILT PER DCR 100109232.	FL					
10	7/6/82	AS BUILT PER DCR 100058107.						
9	7/13/82	AS BUILT PER PLANT WALKDOWN.						
8	1/18/80	AS BUILT PER IP3 TECH. SERVICES #TS-284E.						
7	1/18/80	AS BUILT PER IP3 TECH. SERV. & MOD #88-03-033 RP.						
6								
5								
4								
3								
2								
1								

DESIGN/CHK'D	INDIAN POINT NO.3 NUCLEAR POWER PLANT
DES. SURV	
DISCIPLINE ENG	
DISCIPLINE DIR	
PROJ APPROVAL	
DATE	
New York Power Authority	
SCALE: NONE	REV 11
DWG NO 5651D72	
SHEET 12	



NOTES:

- ENCLOSED CIRCUITRY IS NOT PART OF THE SAFEGUARDS SYSTEM & IS NOT REDUNDANT.
- PC-948D IS FED FROM A SEPERATE INVERTER POWER SUPPLY.
- PRESS. BISTABLES SET TO ACTUATE AT APPROX. 3 PSIG. (CONTAIN. HIGH PRESSURE).

REV NO	DATE	DESCRIPTION	BY	CHKD	APP'D	REV
4	9/23/80	AS BUILT PER DCR 100128259	SH	FR	AV	REG
3	9/23/80	AS BUILT PER DCR 100122765	SH	FR	AV	REG
2	6/9/80	AS BUILT PER DCR 100109231	SH	FR	AV	REG
1			SH	FR	AV	REG

THIS IS A COMPUTER AIDED DESIGN DRAWING. A RECORD OF THE REVISIONS OF THIS DOCUMENT WITH APPROVAL INITIALS/SIGNATURES, IS MAINTAINED IN THE FILES OF THE NEW YORK POWER AUTHORITY'S CONFIGURATION MANAGEMENT & ENGINEERING PROGRAMS SECTION W.P.O.

1984MD15

DESIGNER	INDIAN POINT NO.3 NUCLEAR POWER PLANT
DESIGNER	
DISCIPLINE ID#	
DISCIPLINE DIR	
PROJ APPROVAL	
DATE	
LOGIC DIAGRAMS SAFEGUARDS ACTUATION	
New York Power Authority	
SCALE	NONE
DWG NO	5651072
REV	4
SHEET 12A	

TYPE A

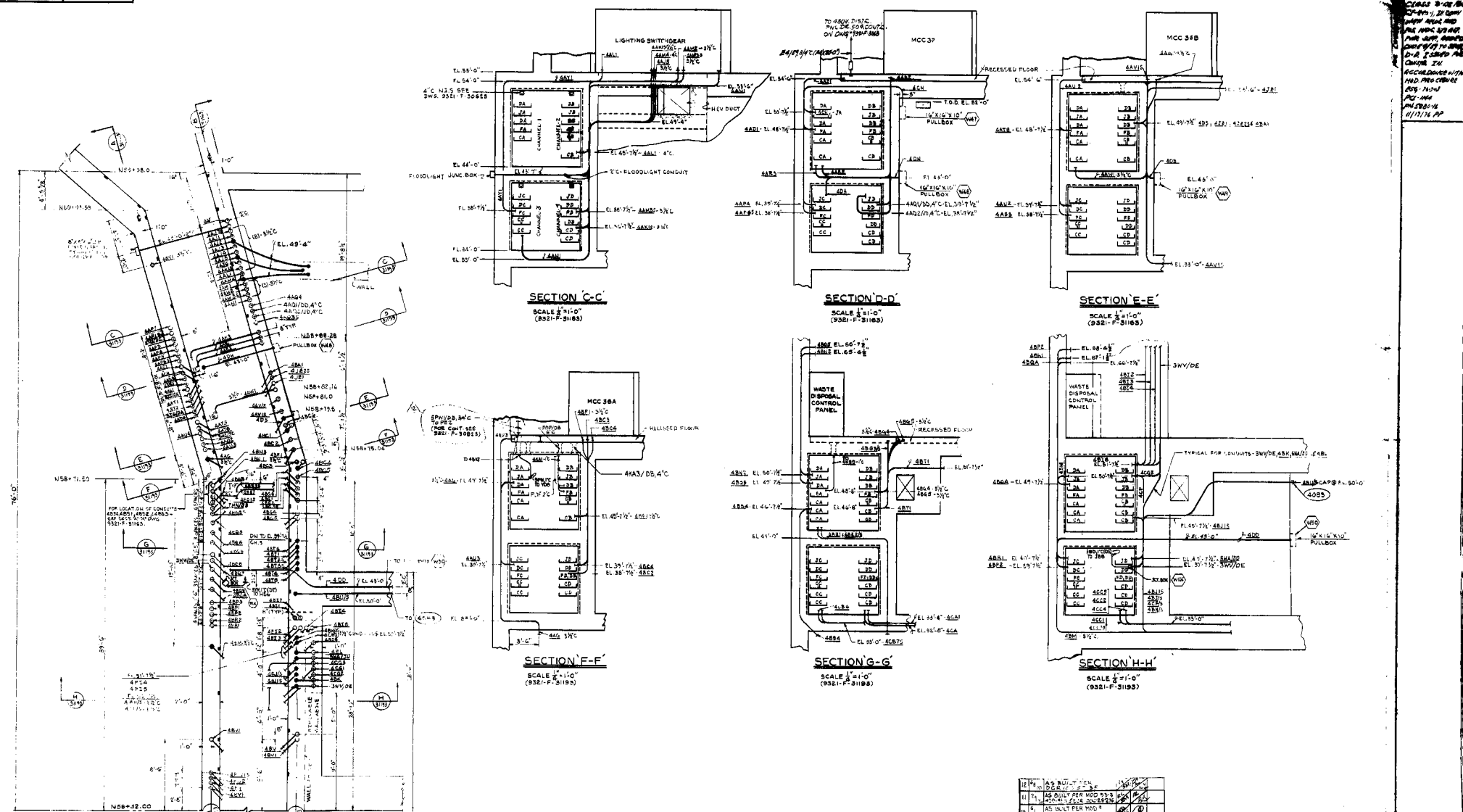
UCLC

9321-F-31193

UCLC

9321-F-31193

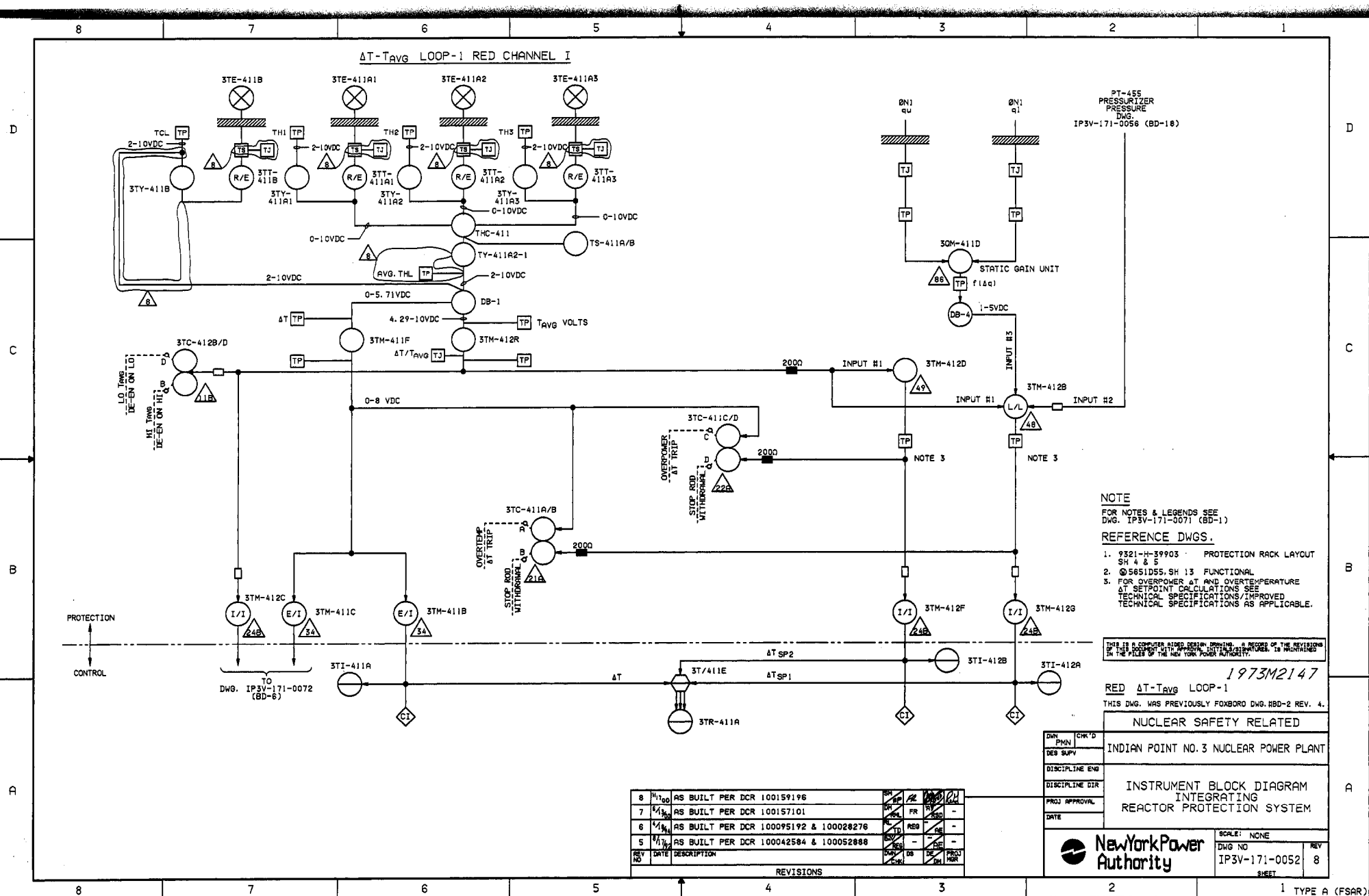
A202384
NILES KEVIN

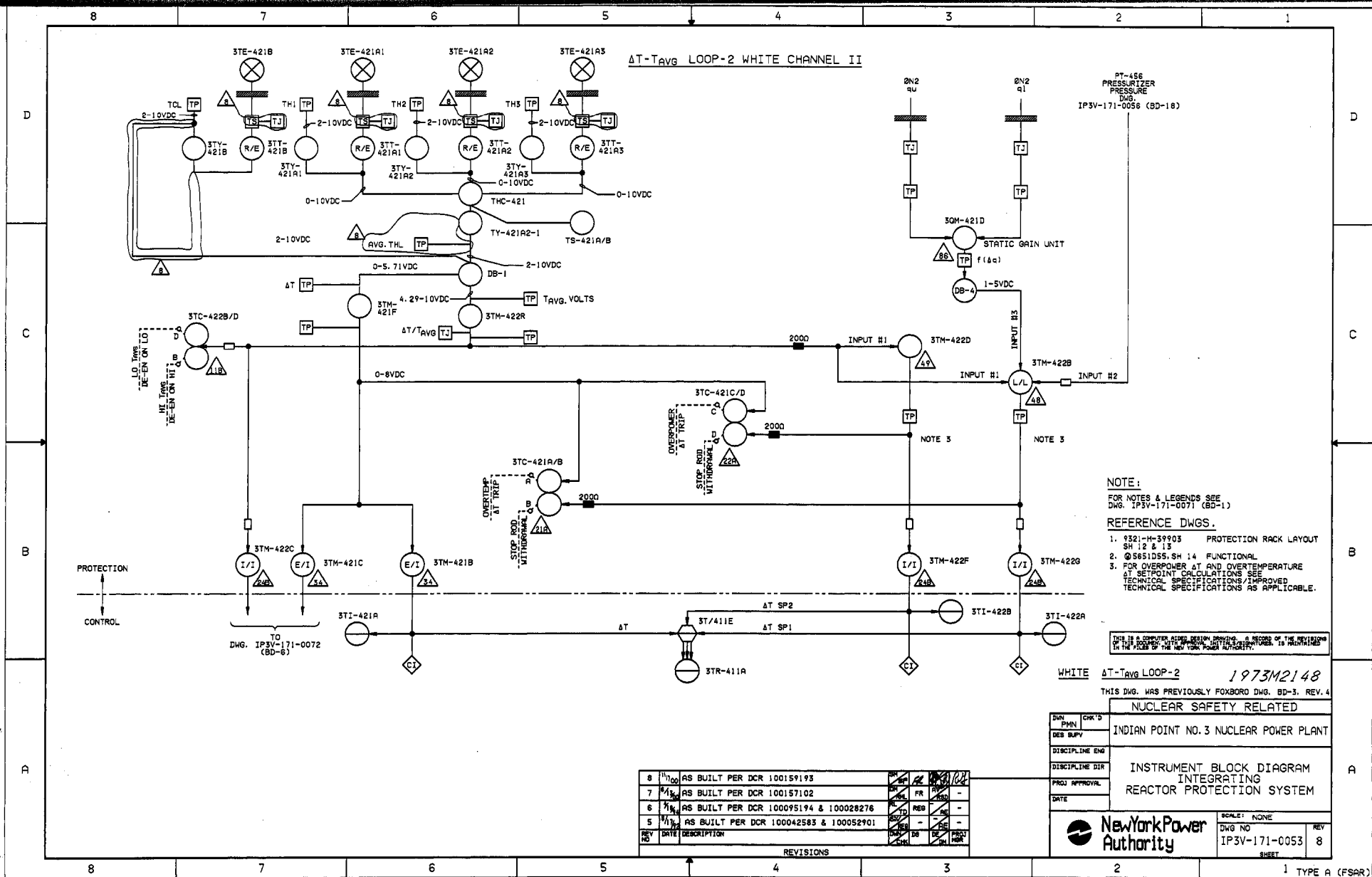


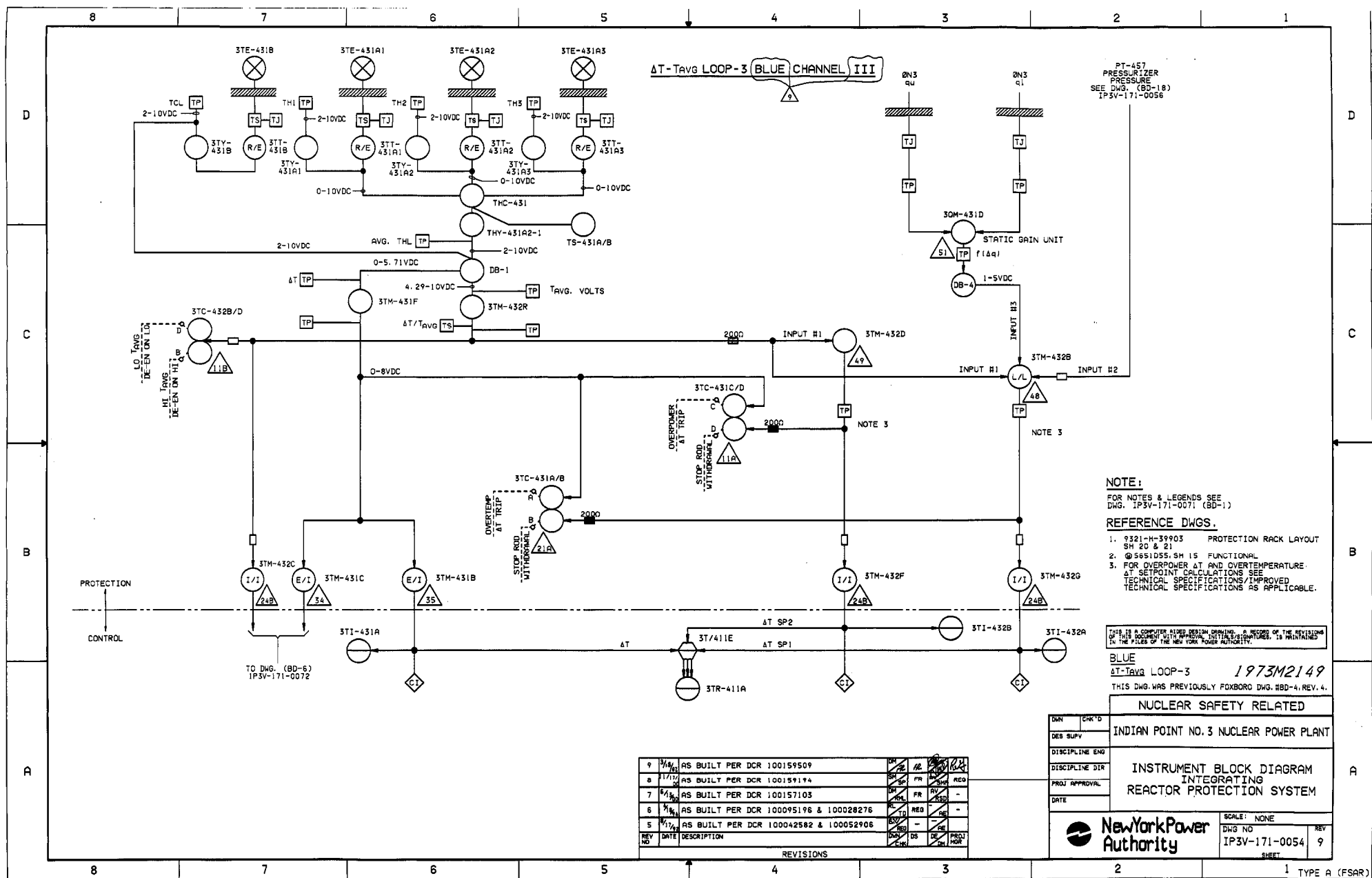
1	12"	AS ONLY PER MOD 911	✓
2	10"	AS ONLY PER MOD 911	✓
3	8"	AS ONLY PER MOD 911	✓
4	6"	AS ONLY PER MOD 911	✓
5	4"	AS ONLY PER MOD 911	✓
6	3"	AS ONLY PER MOD 911	✓
7	2"	AS ONLY PER MOD 911	✓
8	1 1/2"	AS ONLY PER MOD 911	✓
9	1"	AS ONLY PER MOD 911	✓
10	3/4"	AS ONLY PER MOD 911	✓
11	1/2"	AS ONLY PER MOD 911	✓
12	1/4"	AS ONLY PER MOD 911	✓

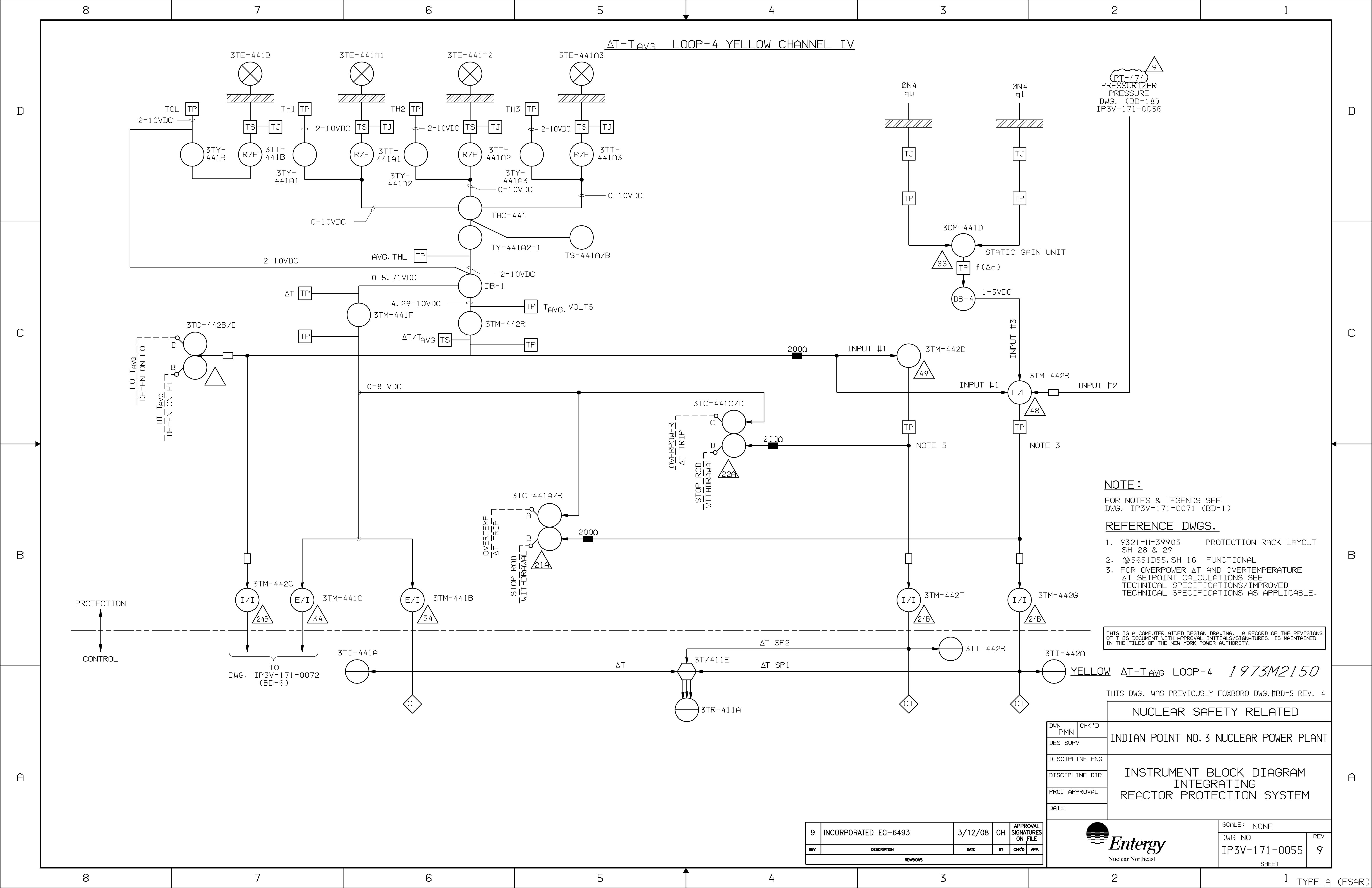
WESTINGHOUSE ELECTRIC CORPORATION
CONDUIT PLAN
P.A.B. ELECTRICAL TUNNELS
ENGAGED CONDUITS
CONSOLIDATED EDISON COMPANY
INDIAN POINT GENERATING STATION
UNIT NO. 2
8321-F-31193 12 A202384

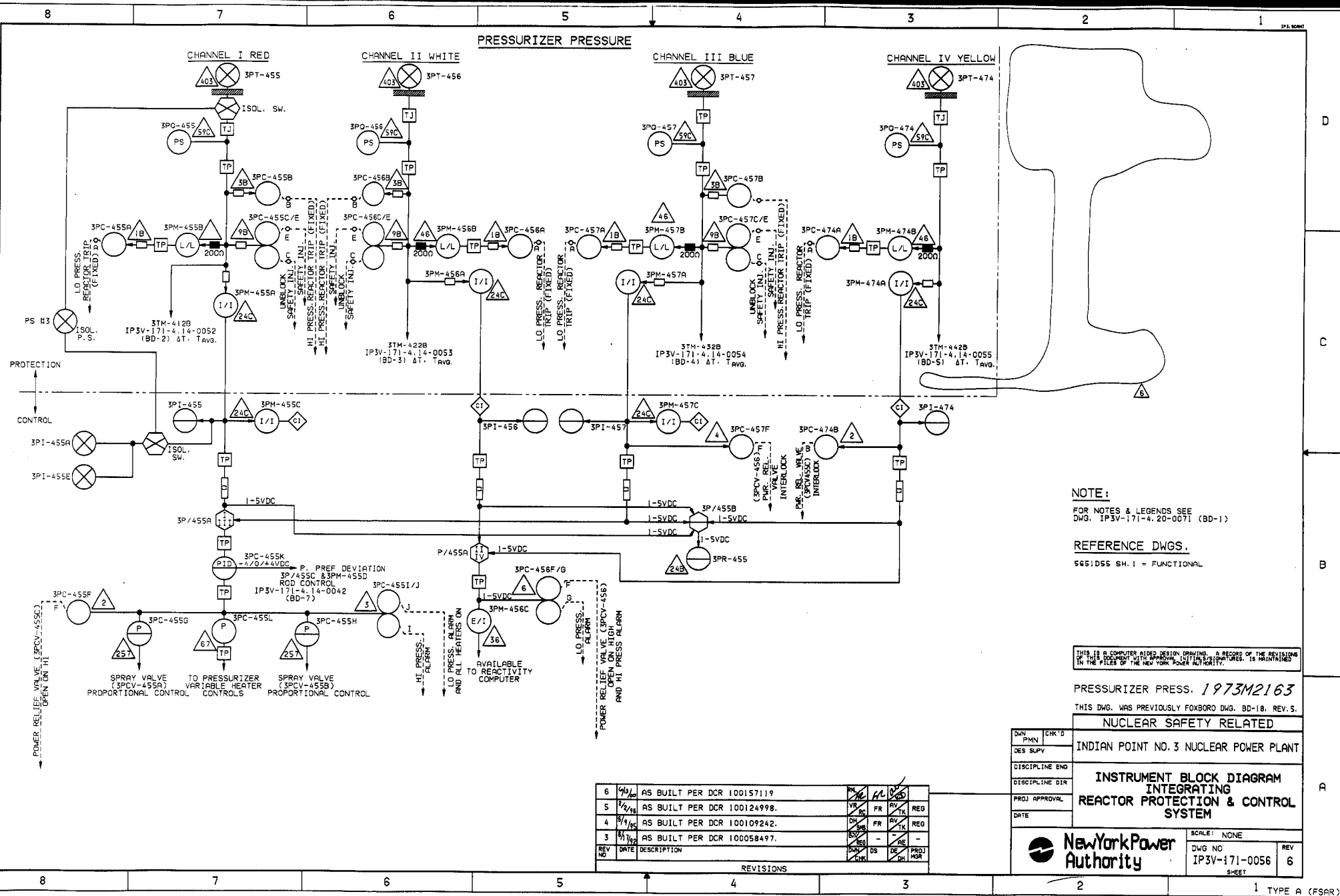




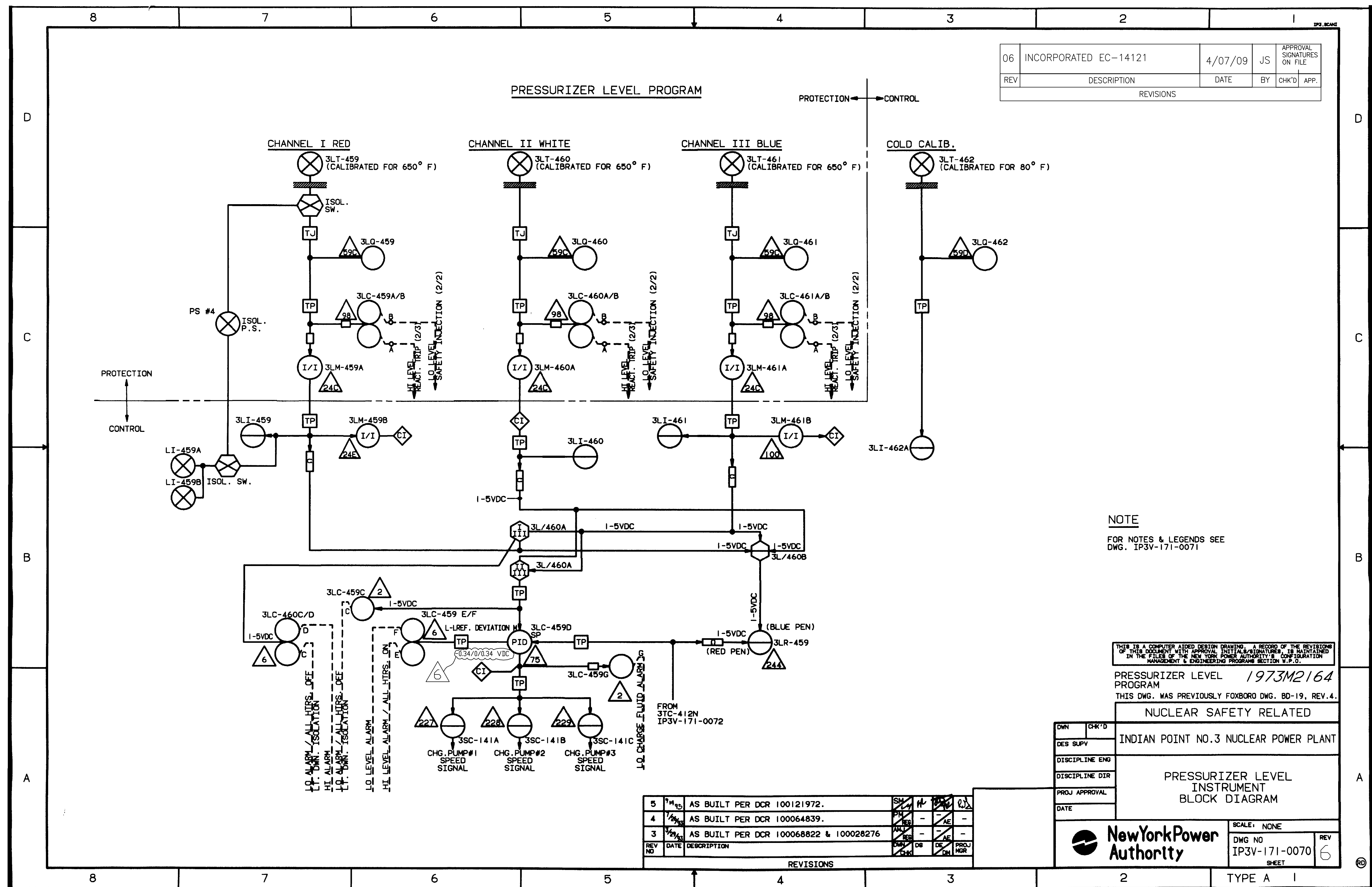


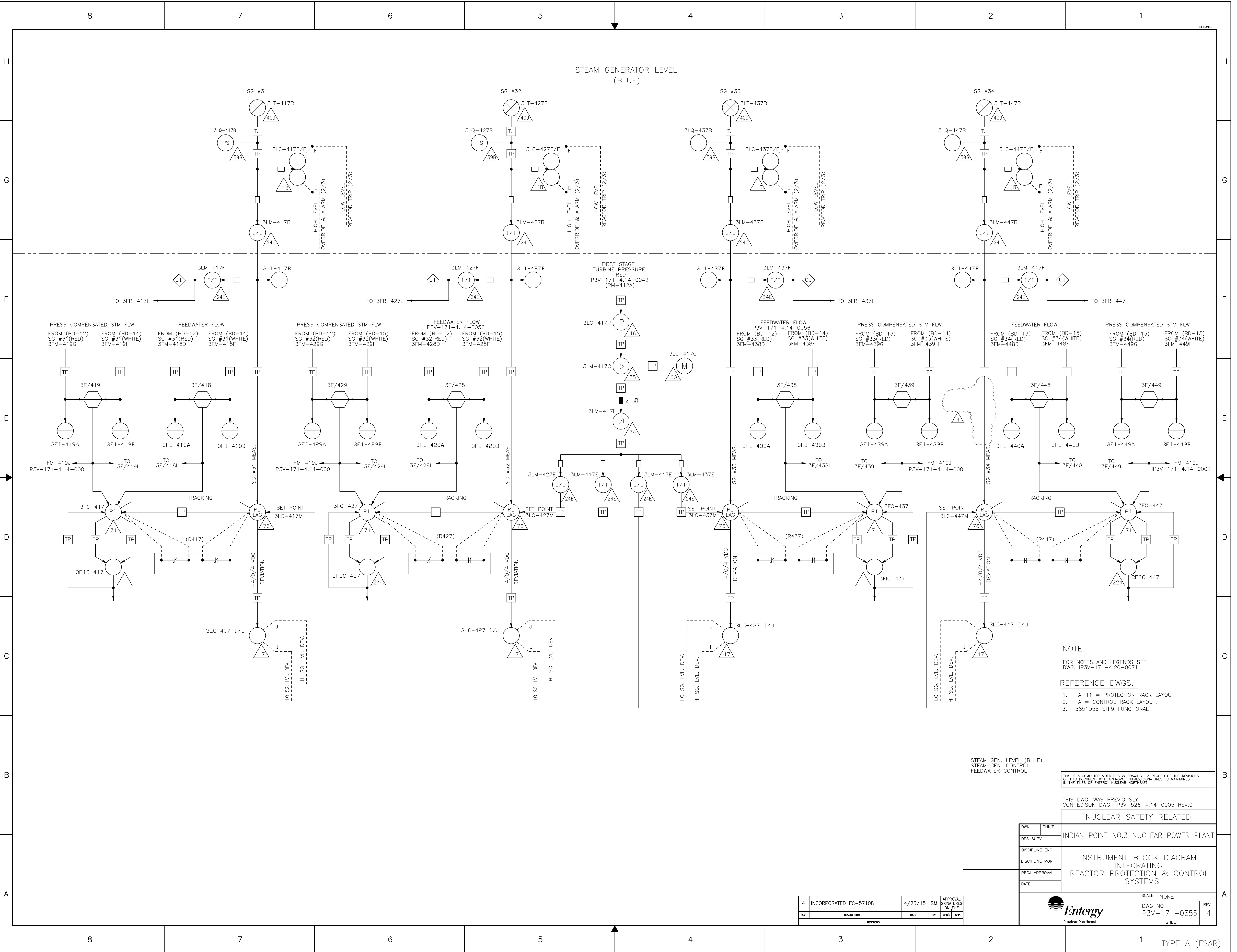


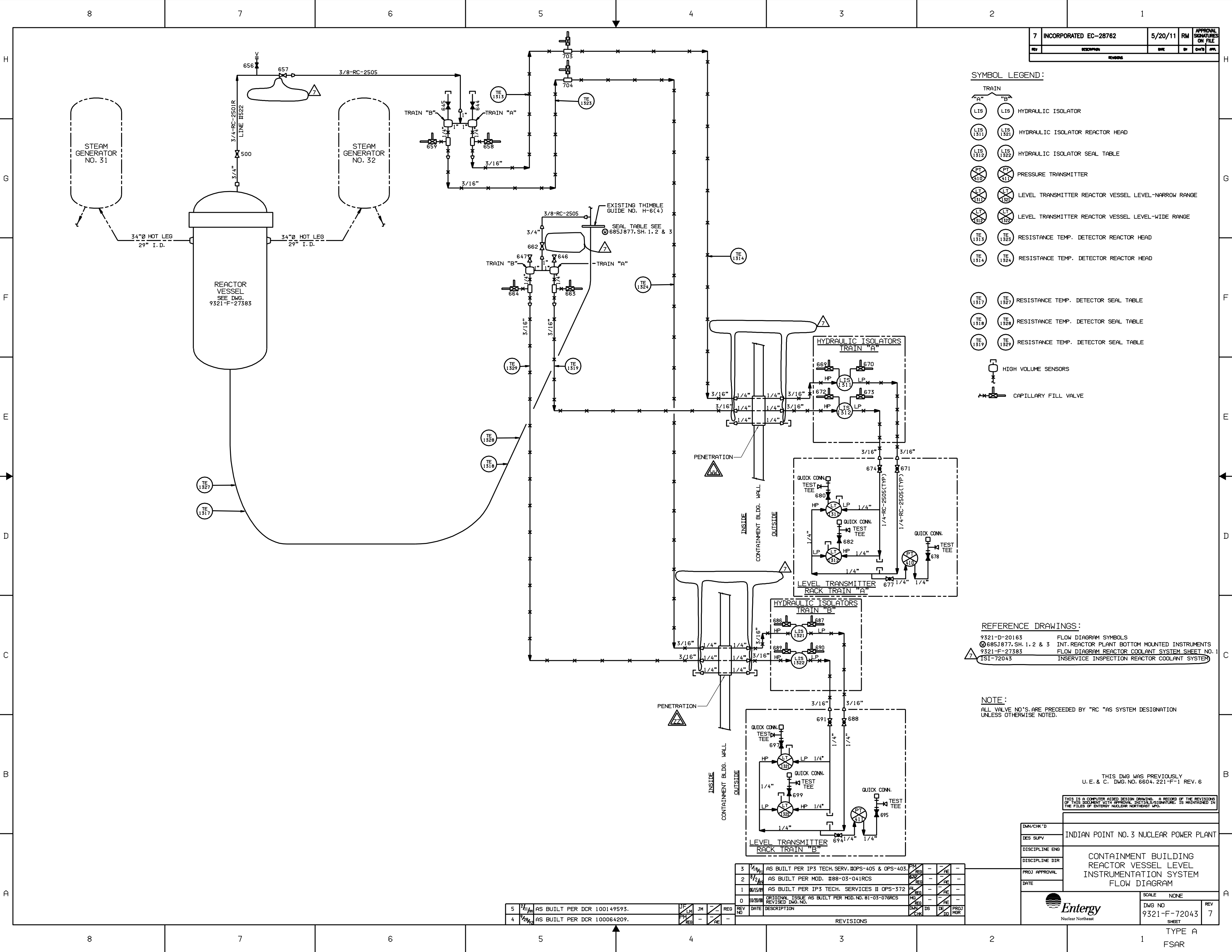




1 TYPE A (FSAR)







7	INCORPORATED EC-28762	5/20/11	RM	APPROVAL SIGNATURES ON FILE
REV	DESCRIPTION	DATE	BY	CHK'D

SYMBOL LEGEND:

- TRAIN
- "A" "B"
- LTS LTI HYDRAULIC ISOLATOR
- LTS 1311 LTS 1321 HYDRAULIC ISOLATOR REACTOR HEAD
- LTS 1312 LTS 1322 HYDRAULIC ISOLATOR SEAL TABLE
- PT 410 PT 411 PRESSURE TRANSMITTER
- LT 1311 LT 1321 LEVEL TRANSMITTER REACTOR VESSEL LEVEL-NARROW RANGE
- LT 1312 LT 1322 LEVEL TRANSMITTER REACTOR VESSEL LEVEL-WIDE RANGE
- TE 1313 TE 1323 RESISTANCE TEMP. DETECTOR REACTOR HEAD
- TE 1314 TE 1324 RESISTANCE TEMP. DETECTOR REACTOR HEAD
- TE 1317 TE 1327 RESISTANCE TEMP. DETECTOR SEAL TABLE
- TE 1318 TE 1328 RESISTANCE TEMP. DETECTOR SEAL TABLE
- TE 1319 TE 1329 RESISTANCE TEMP. DETECTOR SEAL TABLE
- HIGH VOLUME SENSORS
- CAPILLARY FILL VALVE

REFERENCE DRAWINGS:

- 9321-D-20163 FLOW DIAGRAM SYMBOLS
- 685J877, SH. 1, 2 & 3 INT. REACTOR PLANT BOTTOM MOUNTED INSTRUMENTS
- 9321-F-27383 FLOW DIAGRAM REACTOR COOLANT SYSTEM SHEET NO. 1
- 1ST-72043 INSERVICE INSPECTION REACTOR COOLANT SYSTEM

NOTE:

ALL VALVE NO.'S ARE PRECEDED BY "RC "AS SYSTEM DESIGNATION UNLESS OTHERWISE NOTED.

THIS DWG WAS PREVIOUSLY U. E. & C. DWG. NO. 6604, 221-F-1 REV. 6

THIS IS A COMPUTER AIDED DESIGN DRAWING. A RECORD OF THE REVISIONS OF THIS DOCUMENT WITH APPROVAL INITIALS/SIGNATURE, IS MAINTAINED IN THE FILES OF ENTERTY NUCLEAR NORTHWEST INC.

DWG/CHK'D	INDIAN POINT NO. 3 NUCLEAR POWER PLANT
DES. SUPV.	
DISCIPLINE ENG.	
DISCIPLINE DIR.	
PROJ. APPROVAL	
DATE	

SCALE	NONE	REV	7
DWG NO.	9321-F-72043		
SHEET			



REV	NO	DATE	DESCRIPTION	BY	CHK'D	DES	PROJ. MGR
3	1/19/01		AS BUILT PER IP3 TECH. SERV. HOPS-405 & OPS-403.	PM	REG	-	-
2	8/2/03		AS BUILT PER MOD. #88-03-041RCS	PM	REG	-	-
1	06/15/08		AS BUILT PER IP3 TECH. SERVICES # OPS-372	PM	REG	-	-
0	10/20/08		ORIGINAL ISSUE AS BUILT PER MOD. NO. 81-03-076RCS	PM	REG	-	-
			REVISED DWG. NO.	PM	REG	-	-

5	2/11/09		AS BUILT PER DCR 100149593.	JF	JM	REG	-
4	1/28/09		AS BUILT PER DCR 100064209.	JF	JM	REG	-

TYPE A
FSAR