

**NOTE:**  
FOR GENERAL NOTES, REFERENCES, REFERENCE DRAWINGS AND LEGENDS SEE DWG. 9321-F-27473.

**LEGEND:**  
○ SEISMIC CLASSIFICATION  
— INDICATES THERMAL SLEEVE

**REF. DWG.:**  
ISI-27383 - INSERVICE INSPECTION FOR REACTOR COOLANT SYSTEM

THIS IS A COMPUTER AIDED DESIGN DRAWING. A RECORD OF THE REVISIONS TO THIS DOCUMENT WITH APPROVAL INITIALS/SIGNATURES, IS MAINTAINED IN THE FILES OF ENTERTY NUCLEAR NORTHWEST.

REDRAWN FROM @ DWG. 685J413

DISCIPLINE		DATE		BY		CHK	
DESIGN	CHK'D	DATE	BY	CHK	DATE	BY	CHK
DISCIPLINE ENG							
DISCIPLINE DIR							
PROJ APPROVAL							
DATE							

INDIAN POINT NO. 3 NUCLEAR POWER PLANT

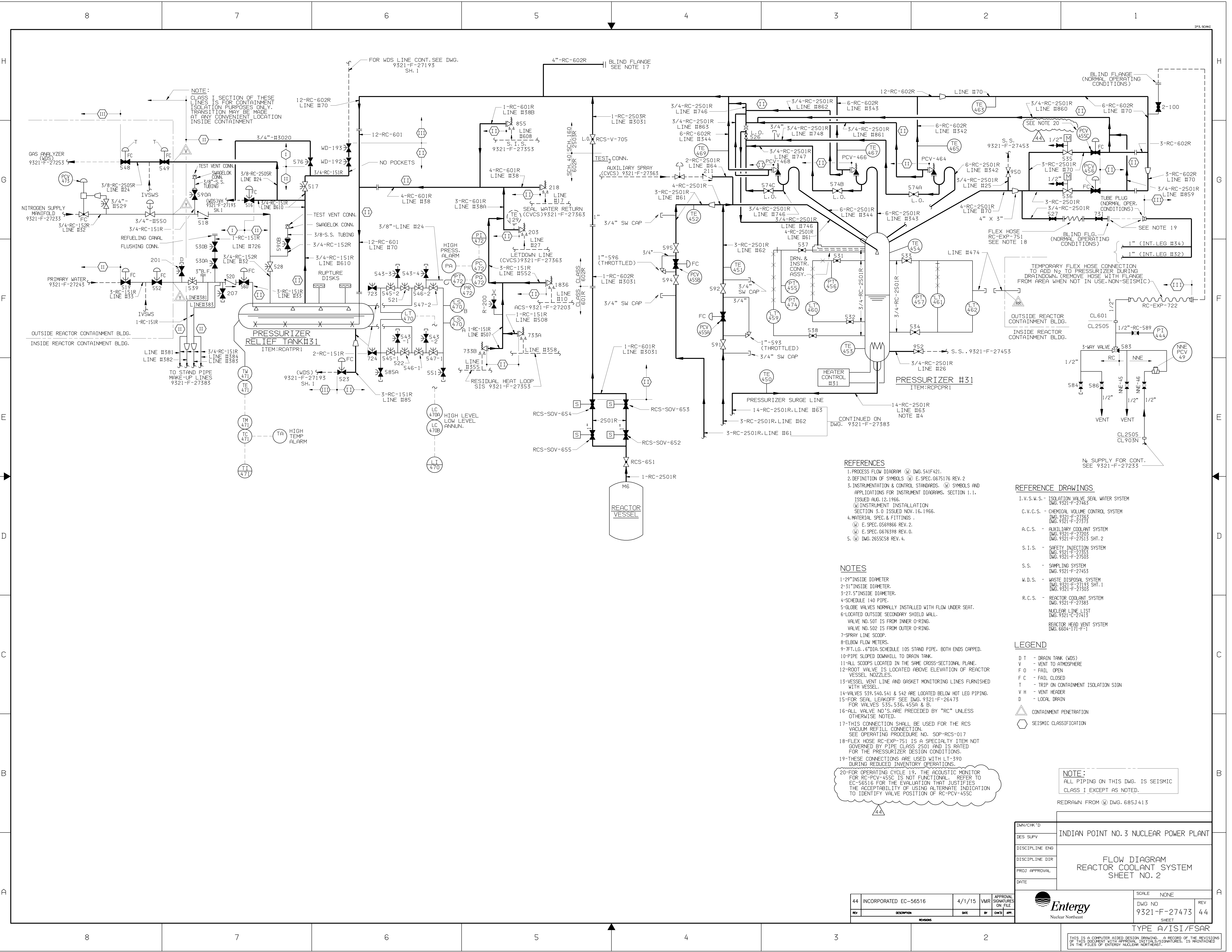
FLOW DIAGRAM  
REACTOR COOLANT SYSTEM  
SHEET NO. 1

SCALE: NONE

DWG NO 9321-F-27383 28

REVISIONS

NO	DATE	DESCRIPTION	BY	CHK	DATE	BY	CHK
27	5/20/11	AS BUILT PER DCP 00-3-010 RC	VR	JF	JM	FR	
26	6/5/10	AS BUILT PER DCR 100157124	JF	LM	JM	REB	
25	1/13/10	AS BUILT PER DCR 100028575.	PH	ED	REB	BY	AE
24	1/13/10	AS BUILT PER MOD 93-03-085RCS.	PH	ED	REB	BY	AE
23	10/10/02	AS BUILT PER MOD 90-03-011RCS & DCR 100028276.	TD	REB	BY	AE	
22	9/30/00	AS BUILT PER IP3 TECH. SERV. WD&D-86.	PH	ED	REB	BY	AE
REV NO	DATE	DESCRIPTION	BY	CHK	DATE	BY	CHK



REFERENCES

- 1. PROCESS FLOW DIAGRAM (PFD) DWG. 541F421.
- 2. DEFINITION OF SYMBOLS (DS) E.SPEC. 6675176 REV. 2
- 3. INSTRUMENTATION & CONTROL STANDARDS. (ICS) SYMBOLS AND APPLICATIONS FOR INSTRUMENT DIAGRAMS, SECTION 1.1.
- ISSUED AUG. 12, 1966.
- (I) INSTRUMENT INSTALLATION SECTION 3.0 ISSUED NOV. 16, 1966.
- 4. MATERIAL SPEC. & FITTINGS
- (M) E.SPEC. 6569866 REV. 2.
- (M) E.SPEC. 6676398 REV. 0.
- 5. (M) DWG. 2655C58 REV. 4.

NOTES

- 1-29" INSIDE DIAMETER
- 2-31" INSIDE DIAMETER
- 3-27.5" INSIDE DIAMETER
- 4-SCHEDULE 140 PIPE
- 5-GLOBE VALVES NORMALLY INSTALLED WITH FLOW UNDER SEAT.
- 6-LOCATED OUTSIDE SECONDARY SHIELD WALL.
- VALVE NO. 501 IS FROM INNER O-RING.
- VALVE NO. 502 IS FROM OUTER O-RING.
- 7-SPRAY LINE SCOOP
- 8-ELBOW FLOW METERS
- 9-7FT. LG., 6" DIA. SCHEDULE 10S STAND PIPE, BOTH ENDS CAPPED.
- 10-PIPE SLOPED DOWNHILL TO DRAIN TANK.
- 11-ALL SCOPES LOCATED IN THE SAME CROSS-SECTIONAL PLANE.
- 12-ROOT VALVE IS LOCATED ABOVE ELEVATION OF REACTOR VESSEL NOZZLES
- 13-VESSEL VENT LINE AND GASKET MONITORING LINES FURNISHED WITH VESSEL
- 14-VALVES 539, 540, 541 & 542 ARE LOCATED BELOW HOT LEG PIPING.
- 15-FOR SEAL LEAKOFF SEE DWG. 9321-F-26473 FOR VALVES 535, 536, 455A & B.
- 16-ALL VALVE NO.'S ARE PRECEDED BY "RC" UNLESS OTHERWISE NOTED.
- 17-THIS CONNECTION SHALL BE USED FOR THE RCS VACUUM REFILL CONNECTION.
- SEE OPERATING PROCEDURE NO. SOP-RCS-017
- 18-FLEX HOSE RC-EXP-751 IS A SPECIALTY ITEM NOT GOVERNED BY PIPE CLASS 2501 AND IS RATED FOR THE PRESSURIZER DESIGN CONDITIONS.
- 19-THese CONNECTIONS ARE USED WITH LT-390 DURING REDUCED INVENTORY OPERATIONS.
- 20-FOR OPERATING CYCLE 19, THE ACOUSTIC MONITOR FOR RC-PCV-455C IS NOT FUNCTIONAL. REFER TO EC-56516 FOR THE EVALUATION THAT JUSTIFIES THE ACCEPTABILITY OF USING ALTERNATE INDICATION TO IDENTIFY VALVE POSITION OF RC-PCV-455C

REFERENCE DRAWINGS

- I.V.S.W.S. - ISOLATION VALVE SEAL WATER SYSTEM DWG. 9321-F-27485
- C.V.C.S. - CHEMICAL VOLUME CONTROL SYSTEM DWG. 9321-F-27363 DWG. 9321-F-27373
- A.C.S. - AUXILIARY COOLANT SYSTEM DWG. 9321-F-27203 DWG. 9321-F-27513 SHT. 2
- S.I.S. - SAFETY INJECTION SYSTEM DWG. 9321-F-27353 DWG. 9321-F-27503
- S.S. - SAMPLING SYSTEM DWG. 9321-F-27453
- W.D.S. - WASTE DISPOSAL SYSTEM DWG. 9321-F-27193 SHT. 1 DWG. 9321-F-27303
- R.C.S. - REACTOR COOLANT SYSTEM DWG. 9321-F-27383
- NUCLEAR LINE LIST DWG. 9321-C-27413
- REACTOR HEAD VENT SYSTEM DWG. 6604-171-F-1

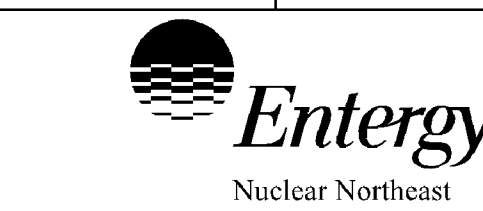
LEGEND

- D T - DRAIN TANK (WDS)
- V - VENT TO ATMOSPHERE
- F O - FAIL OPEN
- F C - FAIL CLOSED
- T - TRIP ON CONTAINMENT ISOLATION SIGN
- V H - VENT HEADER
- D - LOCAL DRAIN
- CONTAINMENT PENETRATION
- SEISMIC CLASSIFICATION

NOTE:  
ALL PIPING ON THIS DWG. IS SEISMIC CLASS I EXCEPT AS NOTED.

REDRAWN FROM (M) DWG. 685J413

DWG/CHK'D	INDIAN POINT NO. 3 NUCLEAR POWER PLANT
DES SUPV	
DISCIPLINE ENG	
DISCIPLINE DIR	
PROJ APPROVAL	
DATE	



SCALE	NONE	REV
DWG NO	9321-F-27473	44
SHEET		

TYPE A/ISI/FSAR

THIS IS A COMPUTER-AIDED DESIGN DRAWING. A RECORD OF THE REVISIONS OF THIS DOCUMENT WITH APPROVAL INITIALS/SIGNATURES, IS MAINTAINED IN THE FILES OF ENTERGY NUCLEAR NORTHEAST.