

REGULATORY INFORMATION DISTRIBUTION SYSTEM (RIDS)

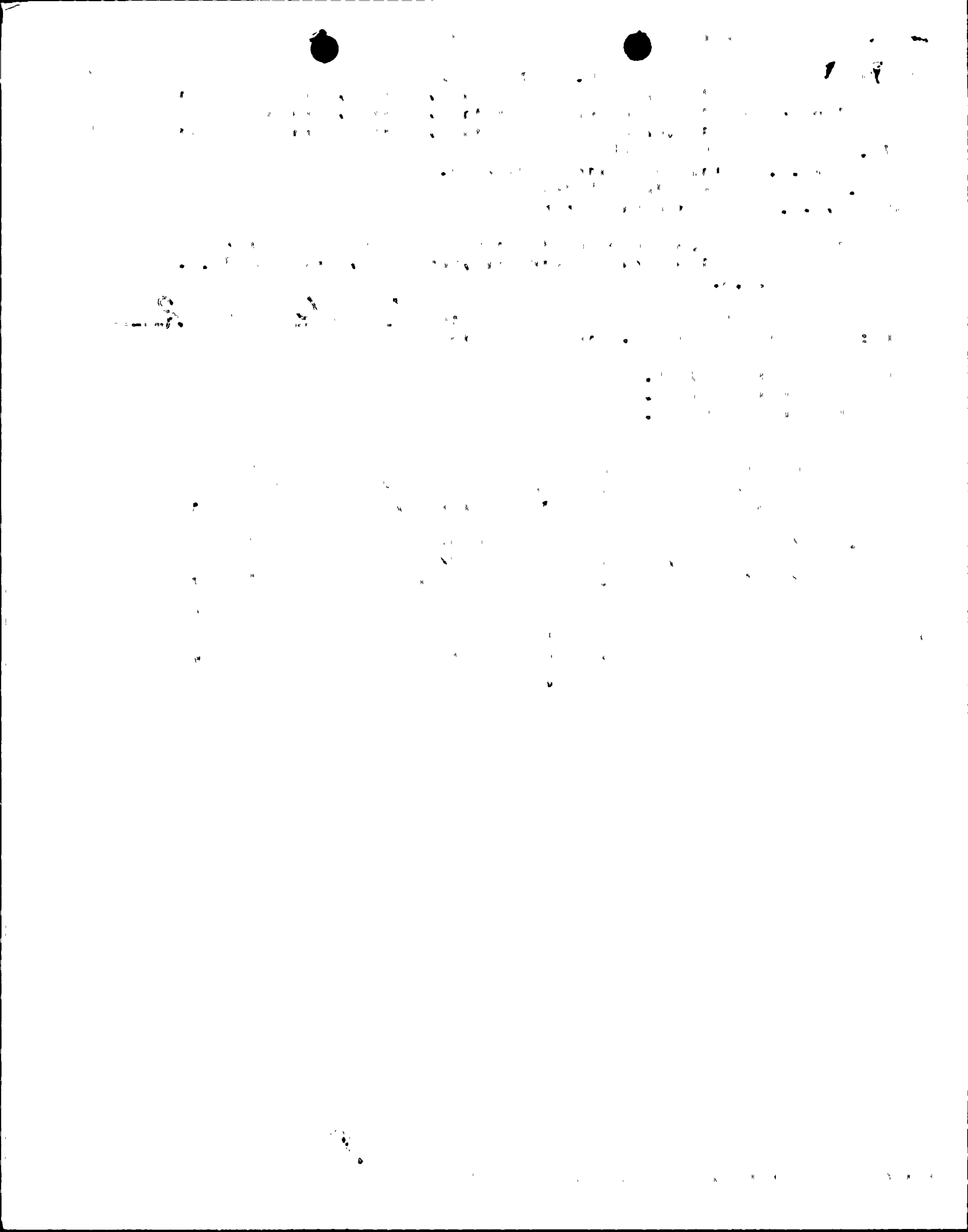
ACCESSION NBR: 8410100398 DOC. DATE: 84/10/05 NOTARIZED: NO DOCKET #
 FACIL: STN-50-528 Palo Verde Nuclear Station, Unit 1, Arizona Publ 05000528
 STN-50-529 Palo Verde Nuclear Station, Unit 2, Arizona Publ 05000529
 STN-50-530 Palo Verde Nuclear Station, Unit 3, Arizona Publ 05000530
 AUTH. NAME AUTHOR AFFILIATION
 VAN BRUNT, E.E. Arizona Public Service Co.
 RECIP. NAME. RECIPIENT AFFILIATION
 KNIGHTON, G.W. Licensing Branch 3

SUBJECT: Informs of completed evaluation of common power source &
 common encl associated circuits, per App R, Sections III.G.2
 & III.G.3.

DISTRIBUTION CODE: B002D COPIES RECEIVED: LTR 1 ENCL 0 SIZE: 2
 TITLE: Licensing Submittal: Fire Protection

NOTES: Standardized plant. 05000528
 Standardized plant. 05000529
 Standardized plant. 05000530

| | RECIPIENT ID CODE/NAME | | COPIES LTTR ENCL | | RECIPIENT ID CODE/NAME | | COPIES LTTR ENCL |
|-----------|---------------------------|----|---------------------|--|---------------------------|----|---------------------|
| | NRR LB3 BC | | 1 | | LICITRA, E | 01 | 1 |
| INTERNAL: | ADM/LFMB | | 1 | | ELD/HDS3 | | 1 |
| | IE FILE | 07 | 1 | | NRR/DE/CEB | 06 | 2 |
| | NRR/DSI/ASB | | 1 | | REG FILE | 04 | 1 |
| | RGNS | | 1 | | | | |
| EXTERNAL: | ACRS | 10 | 6 | | LPDR | 03 | 1 |
| | NRC PDR | 02 | 1 | | NSIC | 05 | 1 |
| | NTIS | | 1 | | | | |



Arizona Public Service Company

October 5, 1984
ANPP-30761 EEVBjr/KLM

Director of Nuclear Reactor Regulation
Mr. George W. Knighton, Chief
Licensing Branch No. 3
Division of Licensing
U. S. Nuclear Regulatory Commission
Washington, D. C. 20555

Subject: Palo Verde Nuclear Generating Station (PVNGS)
Units 1, 2 and 3
10 CFR 50, Appendix R Associated Circuits
Docket Nos. STN 50-528/529/530
File: 84-056-026; G.1.01.10

Dear Mr. Knighton:

PVNGS has recently completed the evaluation of associated circuits per 10 CFR 50 Appendix R, Sections III.G.2 and III.G.3.

The associated circuit concerns evaluated were:

- a. Common power source associated circuits - The common power source concern is found in circuits, either nonsafety-related or safety related, where there is a common power source with shutdown equipment and the power source is not electrically protected from the circuit of concern.
- b. Common enclosure associated circuits - The common enclosure concern is found when redundant circuits are routed together in a raceway or enclosure and they are not electrically protected or fire can destroy both circuits due to inadequate fire protection means.

The evaluation results are as follows:

a. Common Power Source Associated Circuits

All safe-shutdown circuits which share common power source with non-safe shutdown circuits are electrically protected by coordinated relays, fuses, or circuit breakers. An evaluation has been performed to verify this, and is available for audit.

Molded case circuit breakers associated with safe-shutdown power sources will be inspected and tested on a periodic basis.

The undervoltage protective relays for the Class 1E switchgear and the diesel generator protective relays will be calibrated during each refueling outage.

8410100378 841005
PDR ADOCK 05000528
F PDR

B002
10

Page 2.

The remaining Class 1E and Non-Class 1E Protective relays will be calibrated at least on a tri-refueling outage interval.

Therefore, PVNGS does not have any circuits associated by common power source.

b. Common Enclosure Associated Circuits

All power circuits in common enclosures are electrically protected with circuit breakers or fuses which will prevent secondary electrical fires from occurring.

All cable (1E & Non 1E) is IEEE-383 qualified as fire resistant. This minimizes the propagation of exposure fires away from the primary source.

All Non-1E circuits are separated from 1E circuits under the guidelines of Reg Guide 1.75 (IEEE 384-74). A computer program exists to check routings to assure Non-1E circuits are not routed with 1E circuits. As discussed in FSAR Section 8.3, all circuits are color identified to provide a means of distinguishing safety related cables and preventing the intermixing of cables.

Cable penetration through fire areas are fire rated with sealed penetrations to prevent propagation of the flame beyond a fire area.

Therefore, PVNGS does not have any circuits associated by common enclosure which would prevent safe shutdown under fire conditions anywhere in the plant.

If you should have any questions, please contact me.

Very truly yours,



E. E. Van Brunt, Jr.
APS Vice President
Nuclear Production
ANPP Project Director

EEVBJr/KLM/bg

cc: E. A. Licitra
A. C. Gehr

Another temporary goof:

Please replace ANPP-30761 with this letter it should
be ANPP-30760.

Thank you,

bg

84 10 100398

WAS PREVIOUSLY DONE ONLY DIFFERENCE IS THE ODD II
BEING CHANGED. SORRY ONLY COPY I HAVE QUESTIONS CALL
RICHARD XE8989