

# CATEGORY 1

## REGULATORY INFORMATION DISTRIBUTION SYSTEM (RIDS)

ACCESSION NBR: 9609240217      DOC. DATE: 96/09/14      NOTARIZED: NO      DOCKET #  
FACIL: 50-397 WPPSS Nuclear Project, Unit 2, Washington Public Powe      05000397  
AUTH. NAME      AUTHOR AFFILIATION  
SWANK, D.A.      Washington Public Power Supply System  
RECIP. NAME      RECIPIENT AFFILIATION  
                         Document Control Branch (Document Control Desk)

SUBJECT: Forwards drawing which was not submitted in 960821 ltr to be withheld from public disclosure.

DISTRIBUTION CODE: AP01D      COPIES RECEIVED: LTR 1 ENCL 1 SIZE: 3+1  
TITLE: Proprietary Review Distribution - Pre Operating License & Operating R

### NOTES:

	RECIPIENT		COPIES		RECIPIENT	COPIES	
	ID CODE/NAME		LTR	ENCL	ID CODE/NAME	LTR	ENCL
	PD4-2 LA		1	1	PD4-2 PD	1	1
	COLBURN, T		1	1			
INTERNAL:	ACRS		1	1	FILE-CENTER 01	1	1
	OGC/HDS3		1	0			
EXTERNAL:	NRC PDR		1	1			

*Drawings located in Central Files*

NOTE TO ALL "RIDS" RECIPIENTS:  
PLEASE HELP US TO REDUCE WASTE! CONTACT THE DOCUMENT CONTROL DESK,  
ROOM OWFN 5D-5 (EXT. 415-2083) TO ELIMINATE YOUR NAME FROM  
DISTRIBUTION LISTS FOR DOCUMENTS YOU DON'T NEED!

TOTAL NUMBER OF COPIES REQUIRED: LTR 7 ENCL 6

C  
A  
T  
E  
G  
O  
R  
Y  
  
1  
  
D  
O  
C  
U  
M  
E  
N  
T





WASHINGTON PUBLIC POWER SUPPLY SYSTEM

P.O. Box 968 • 3000 George Washington Way • Richland, Washington 99352-0968 • (509) 372-5000

September 14, 1996  
GO2-96-185

Docket No. 50-397

U.S. Nuclear Regulatory Commission  
Attn: Document Control Desk  
Washington, DC 20555

Gentlemen:

Subject: **WNP-2, OPERATING LICENSE NPF-21  
REQUEST FOR ADDITIONAL INFORMATION  
ABB CENO FUEL DEBRIS FILTER**

Reference: Letter GO2-96-168, dated August 21, 1996, DA Swank (SS) to NRC, "Request for Additional Information ABB CENO Fuel Debris Filter"

The referenced letter submitted an affidavit requesting that an informally submitted copy of ABB Combustion Engineering Nuclear Operations (ABB CENO) Drawing AA 263 843 U, Rev. 1, Sheet 1, be withheld from public disclosure. The letter did not resubmit the drawing.

At the staff's request, this letter formally submits the drawing as Attachment 1 and requests that it be withheld from public disclosure in accordance with the provisions of 10 CFR 2.790 as described in the referenced letter which is included as Attachment 2 to this letter.

If you have any questions or desire additional information regarding this matter please contact me or Ms. L.C. Fernandez at (509) 377-4147.

Respectfully,

D.A. Swank (Mail Drop PE20)  
Manager, Regulatory Affairs

Attachments

cc: LJ Callan - NRC RIV (w/o attachments)  
KE Perkins, Jr. - NRC RIV, Walnut Creek Field Office (w/o attachments)  
NS Reynolds - Winston & Strawn (w/o attachments)  
TG Colburn - NRR (w/o attachments)  
DL Williams - BPA/399 (w/o attachments)  
NRC Sr. Resident Inspector - 927N (w/o attachments)

*change i,  
NRC PDR*

*Ltr. Encl  
1 1 NP*

*AP01*

9609240217 960914  
PDR ADDOCK 05000397  
P PDR

*Drawings located in Central Files*





ATTACHMENT 1

ABB Combustion Engineering Nuclear Operations  
(ABB CENO)  
Drawing AA 263 843 U, Rev. 1, Sheet 1



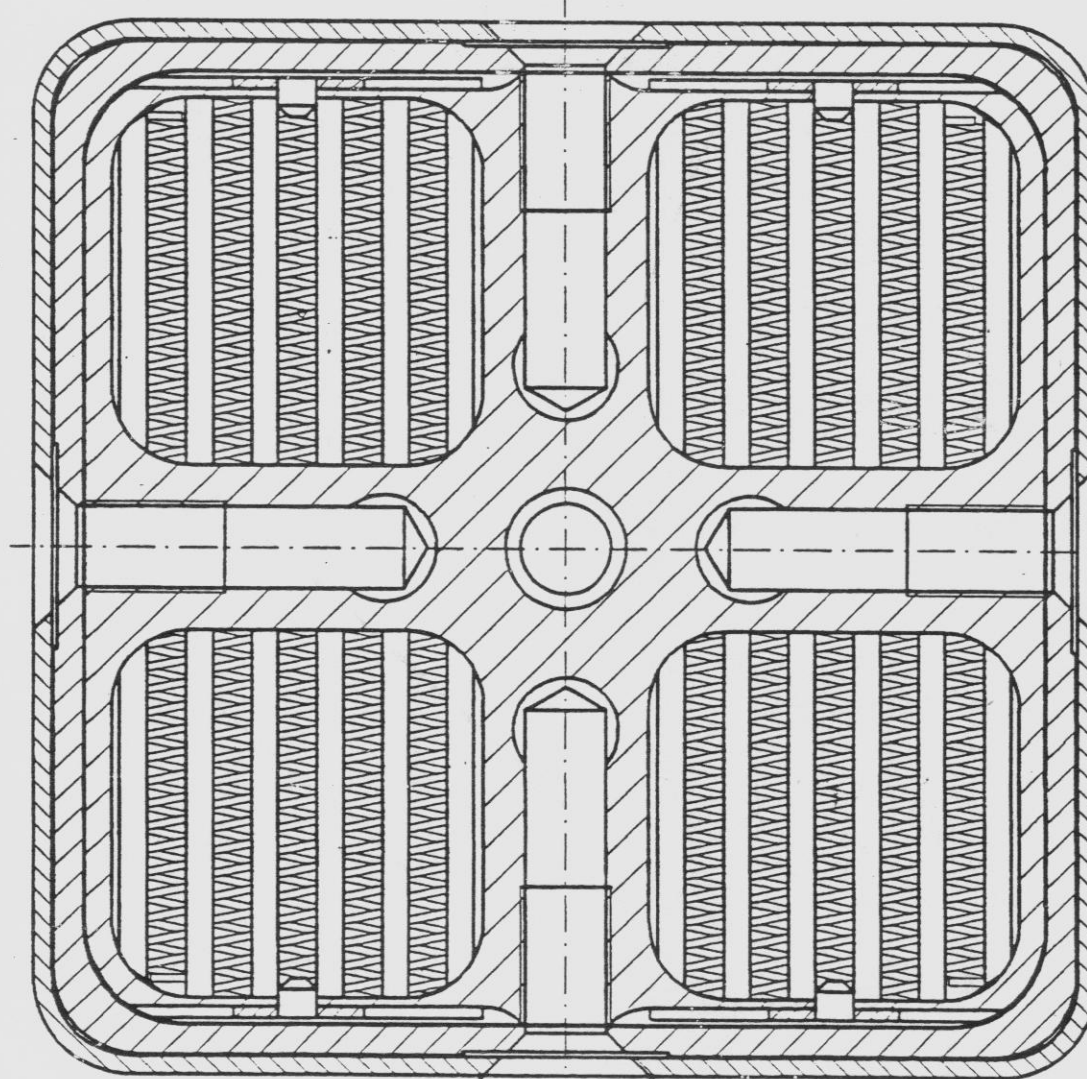
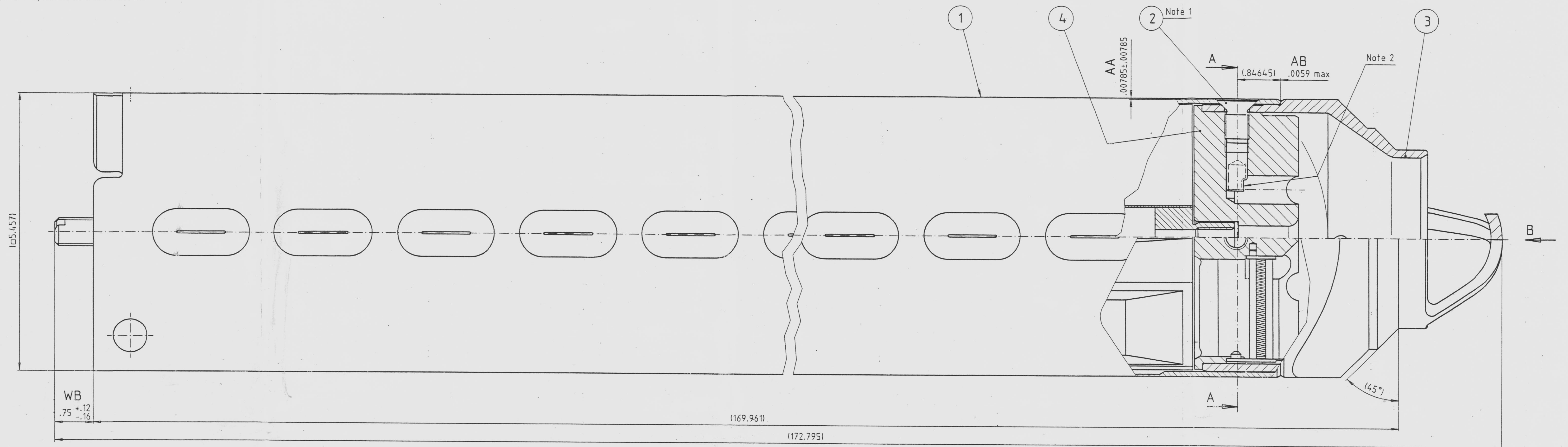
ATTACHMENT 2

Letter GO2-96-168, dated August 21, 1996,  
DA Swank (SS) to NRC,  
"Request for Additional Information ABB CENO Fuel Debris Filter"

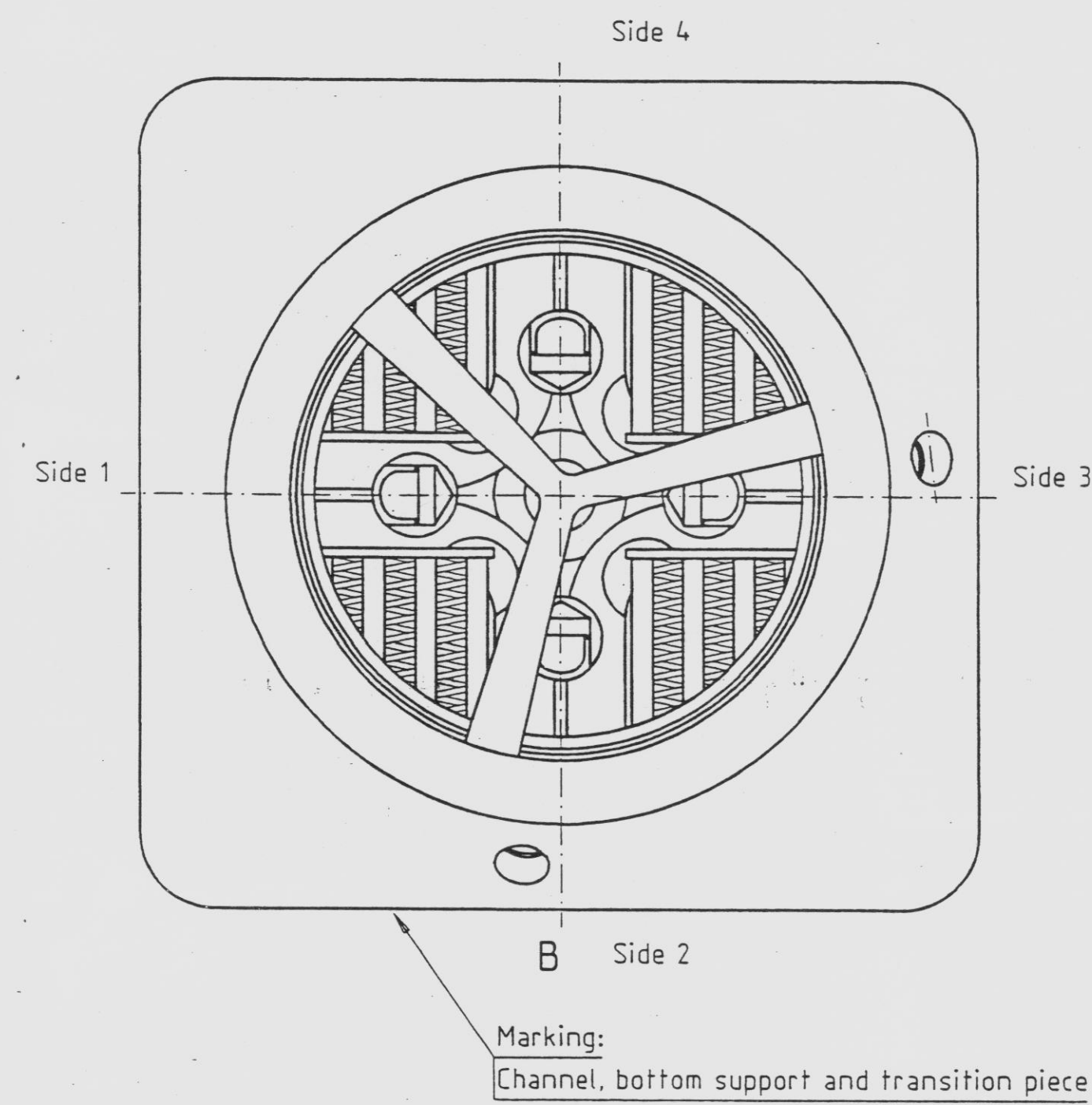


AA263 843U/1

- Note 1 Tightening torque 44 +9/-0 lbf-in.  
Note 2 The screw end is staved up .059-.094. HA  
Note 3 During the jointly countersinking the bottom support and the transition piece must bear against each other and the latter must also bear against the channel. The transition piece shall be centered within  $\phi.0157$  in the channel.  
Note 4 Specification: AA 222 384.



WA  
A-A  
Note 3



Marking:  
Channel, bottom support and transition piece

No.	Revision	Position of bottom support marking toward channel side 2 added.	Prep'd	Chk'd	App'd	Year	Week
1			BKB	BKB	BKB	96	12

			9609240225-760914 PDR ADOCK 05000397 CF		
1	4	Bottom support	AA 263 848-A	AlSi 304L	
1	3	Transition piece	AA 263 850-1	AlSi 304L	
4	2	Sunk screw	AA 227 319-1	ASTM B408	
1	1	Channel	AA 263 845-A	Zircaloy-4	
B	A	Item No.	Name of Item	Article No. Drawing	Material
Qty for group					Dimension, type, etc.
B, (kAl) in micro-inches ✓			Three angle projection ③ ④		
			Conversion from millimeters into inches in accordance with ISO 379 method A.		
Prepared by		Scale		Fuel channel WNP2	
BKB MG		1:1			
Checked by		Reference			
BKB LE					
Approved by		Issued by dept		Year week	
BKB AW		BKB		95 12	
ABB Atom			AA 263 843 U		
			Rev and Sheet		1
			Cont.		

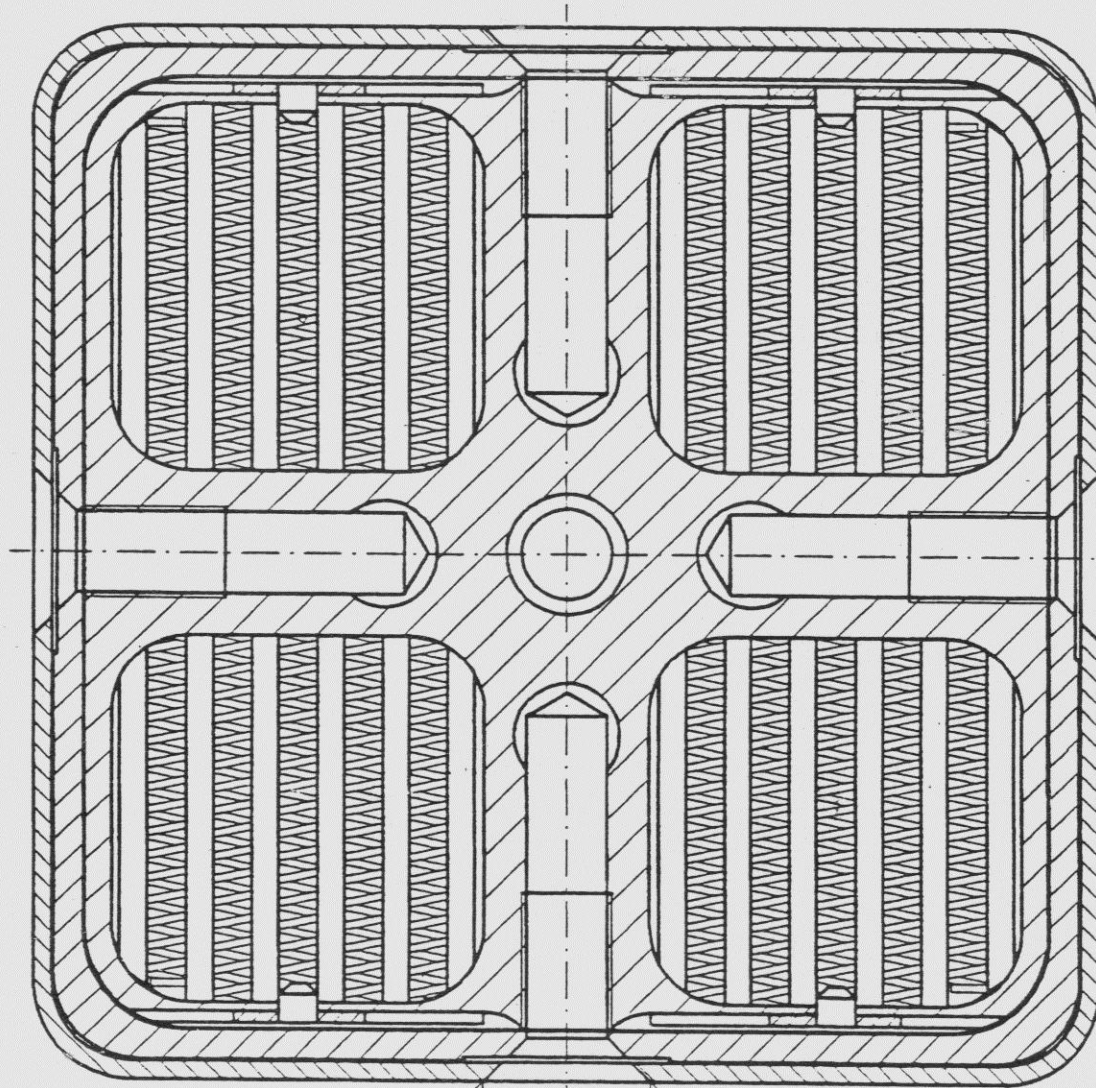
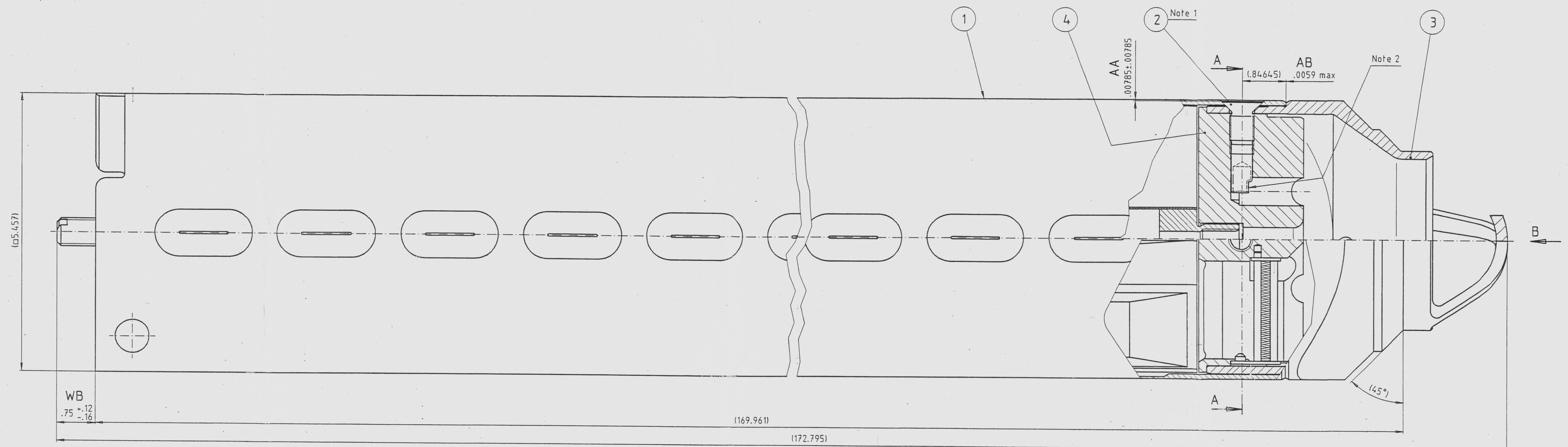
50-397  
9/14/96  
96 0924 0217-01

FE



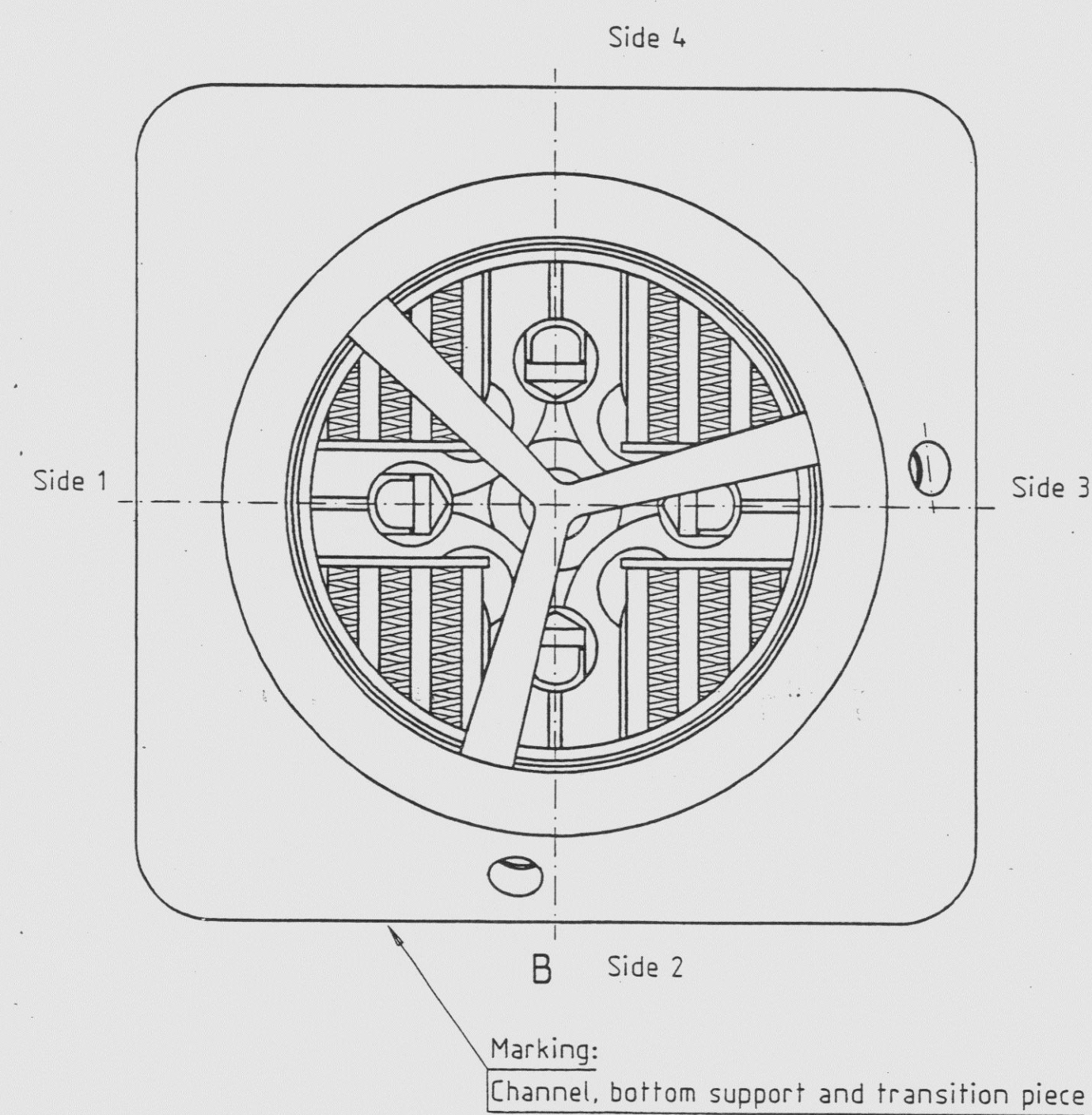
AA263 843U/1

- Note 1 Tightening torque 44  $\pm$  9/-0 lbf-in.  
Note 2 The screw end is staved up .059-.094. HA  
Note 3 During the jointly countersinking the bottom support and the transition piece must bear against each other and the latter must also bear against the channel. The transition piece shall be centered within  $\phi$ .0157 in the channel.  
Note 4 Specification: AA 222 384.



WA  
A-A

Note 3



No.	Revision	Prep'd	Ch'd	App'd	Year	Week
1	Position of bottom support marking toward channel side 2 added.	BKB	BKB	BKB	96	12

9609240225 960914 PDR ADDCK 05000397 CF					
1	4	Bottom support	AA 263 848-A	AlSi 304L	
1	3	Transition piece	AA 263 850-1	AlSi 304L	
4	2	Sunk screw	AA 227 319-1	ASTM B408	
1	1	Channel	AA 263 845-A	Zircaloy-4	
B	A	Item No.	Name of item	Article No. Drawing	Material
Qty	for group				Dimension, type, etc.
			R <sub>a</sub> (AA) in micro-inches		
			Third angle projection		
			Conversion from millimeters into inches in accordance with ISO 379 method A.		
Prepared by BKB MG		Scale 1:1		Fuel channel WNP2	
Checked by BKB LE		Reference			
Approved by BKB AW		Issued by Dept BKB		Year/Week 95 12	
ABB Atom			AA 263 843 U		1
					1

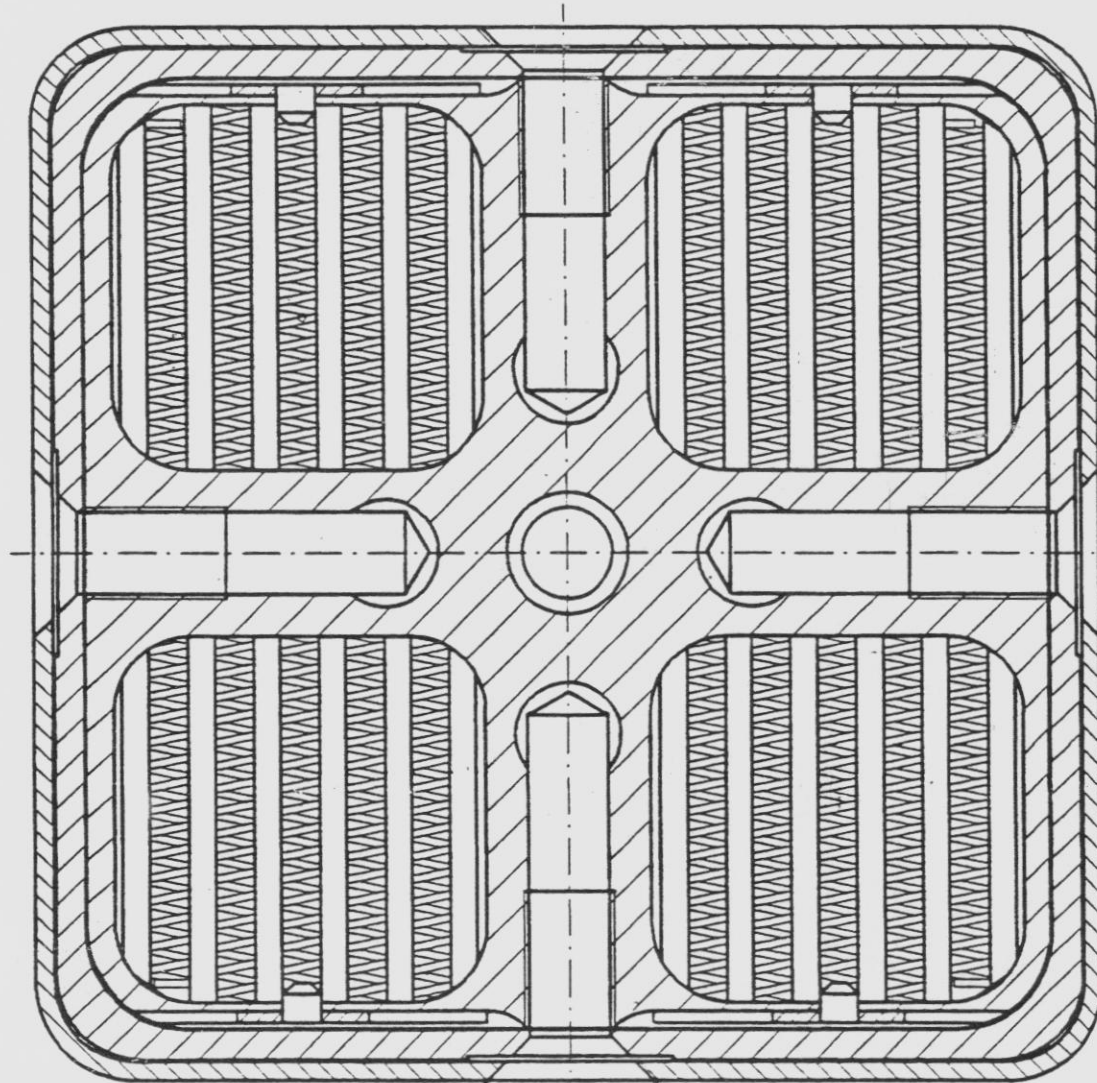
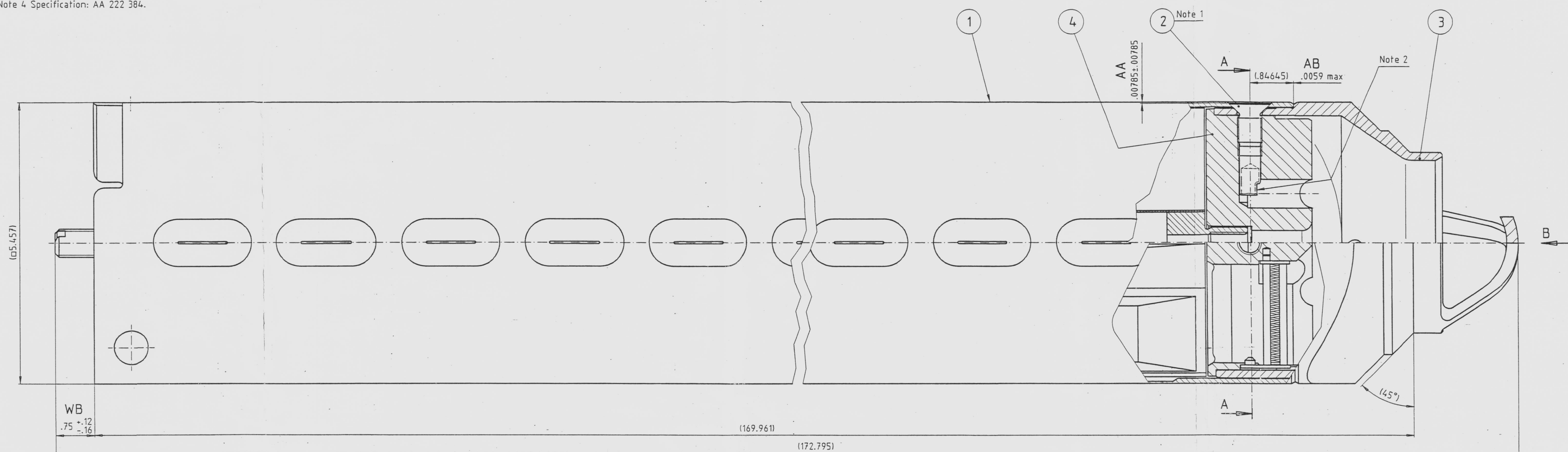
50-397  
9/14/90  
9609240217-02

DE



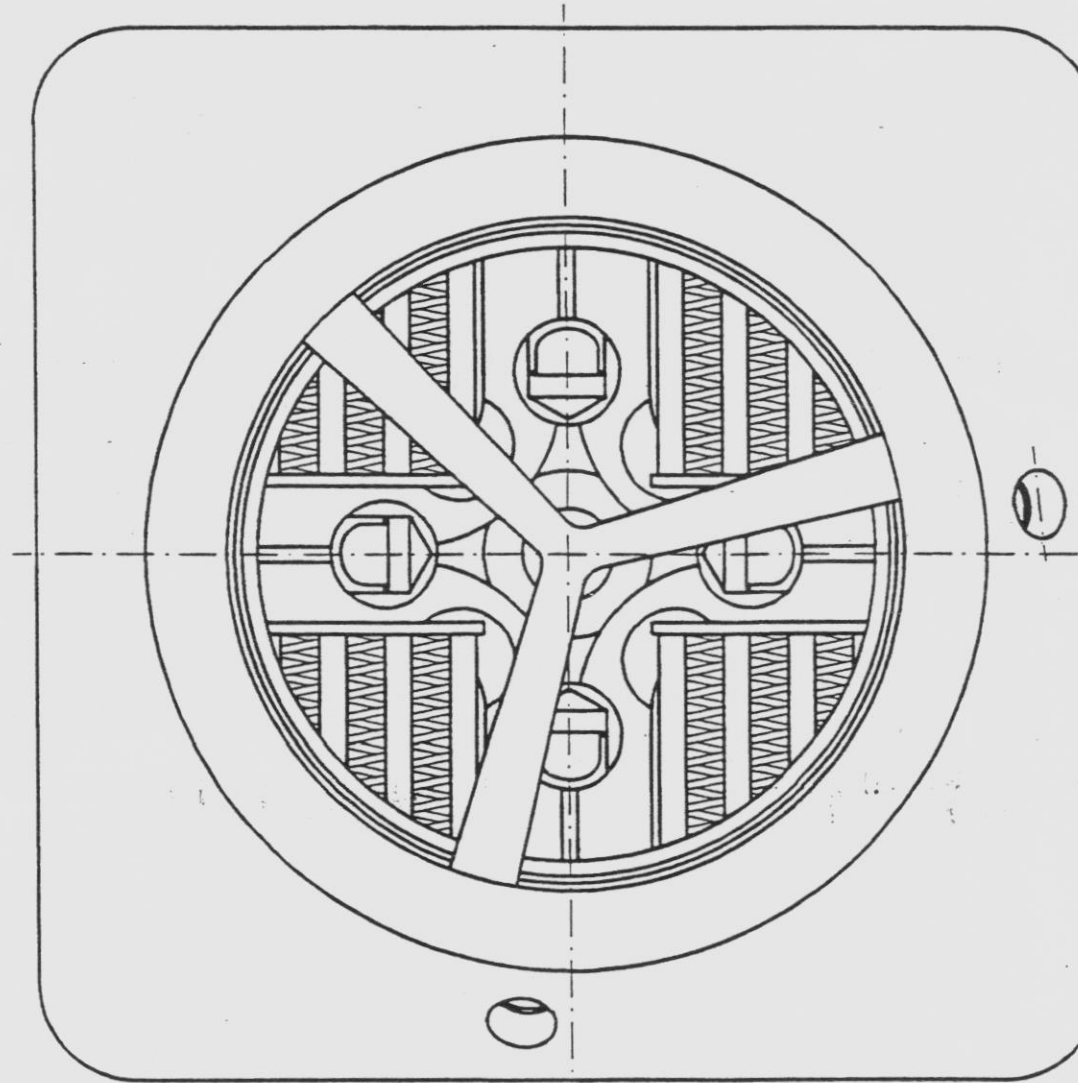
AA263 843U/1

- Note 1 Tightening torque 44 +9/-0 lbf-in.  
Note 2 The screw end is staved up .059-.094. HA  
Note 3 During the jointly countersinking the bottom support and the transition piece must bear against each other and the latter must also bear against the channel. The transition piece shall be centered within  $\phi.0157$  in the channel.  
Note 4 Specification: AA 222 384.



A-A

Note 3

Marking:  
Channel, bottom support and transition piece

No.	Revision	Prep'd	Chk'd	App'd	Year	Week
1	Position of bottom support marking toward channel side 2 added.	BKB	BKB	BKB	96	12

9609240225-960914 PDR ADDCK 05000397 P CF						
1	4	Bottom support	AA 263 848-A	AISI 304L		
1	3	Transition piece	AA 263 850-1	AISI 304L		
4	2	Sunk screw	AA 227 319-1	ASTM B408		
1	1	Channel	AA 263 845-A	Zircaloy-4		
B	A	Item No.	Name of item	Article No. Drawing	Material	Dimension, type, etc.
Qty for group		<div>Third angle projection</div>				
B, AAA in micro-inches		<div>Conversion from millimeters into inches in accordance with ISO 379 method A.</div>				
Prepared by		Scale		Fuel channel WNP2		
BKB MG		1:1				
Checked by		Reference				
BKB LE						
Approved by		Issued by dept		Year/week		Rev. no. Sheet
BKB AW		BKB		95 12		
ABB Atom			AA 263 843 U		Cont.	1

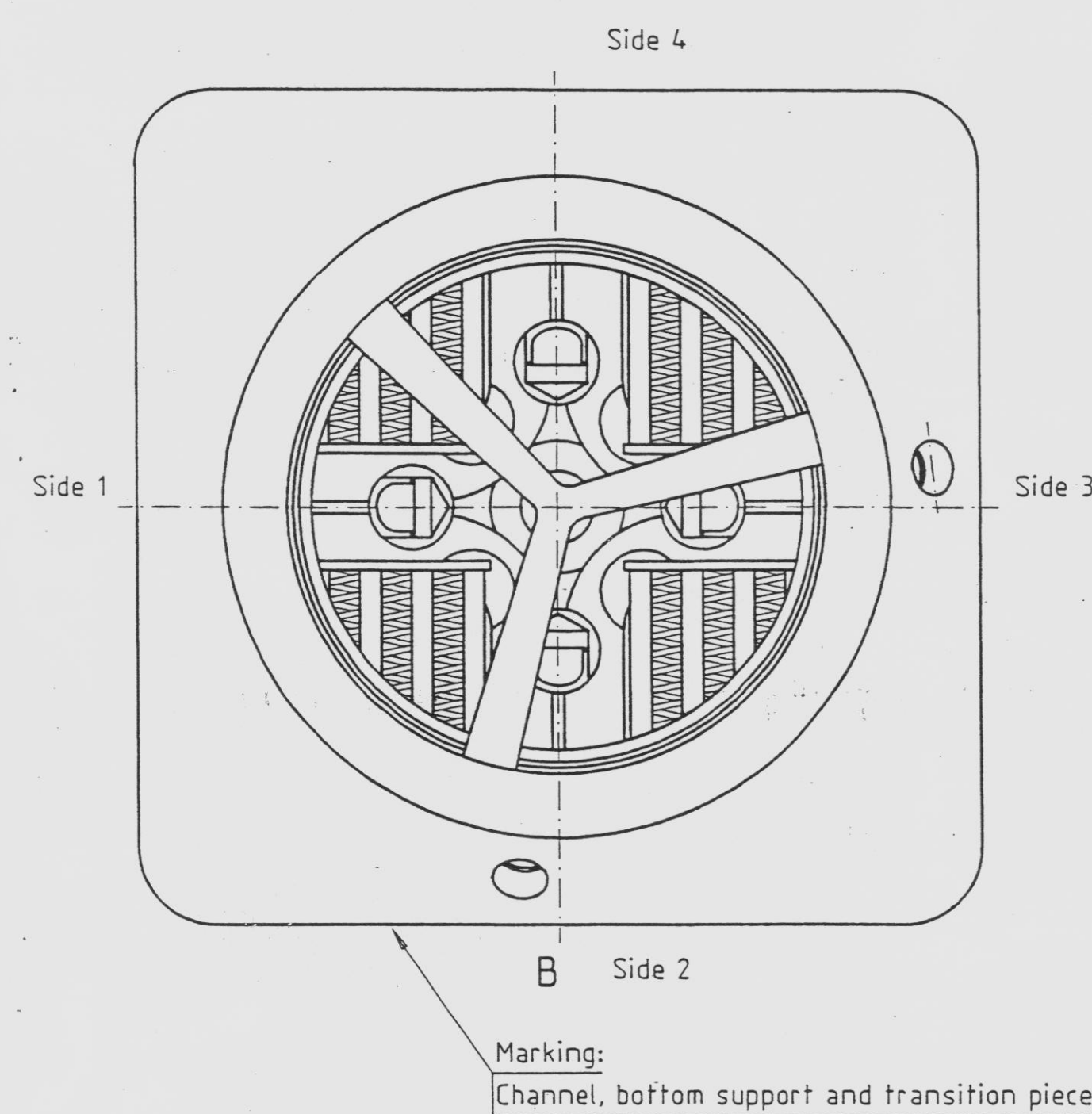
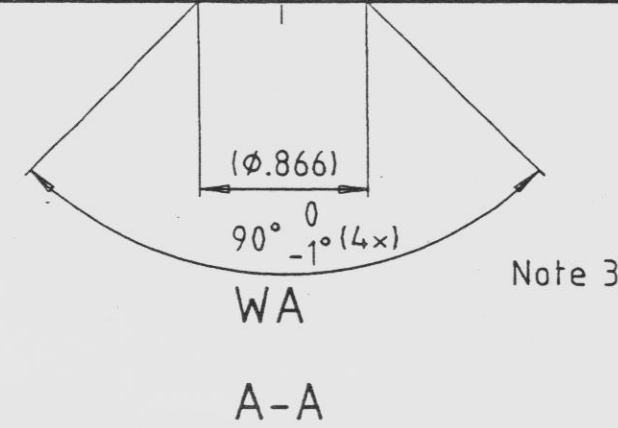
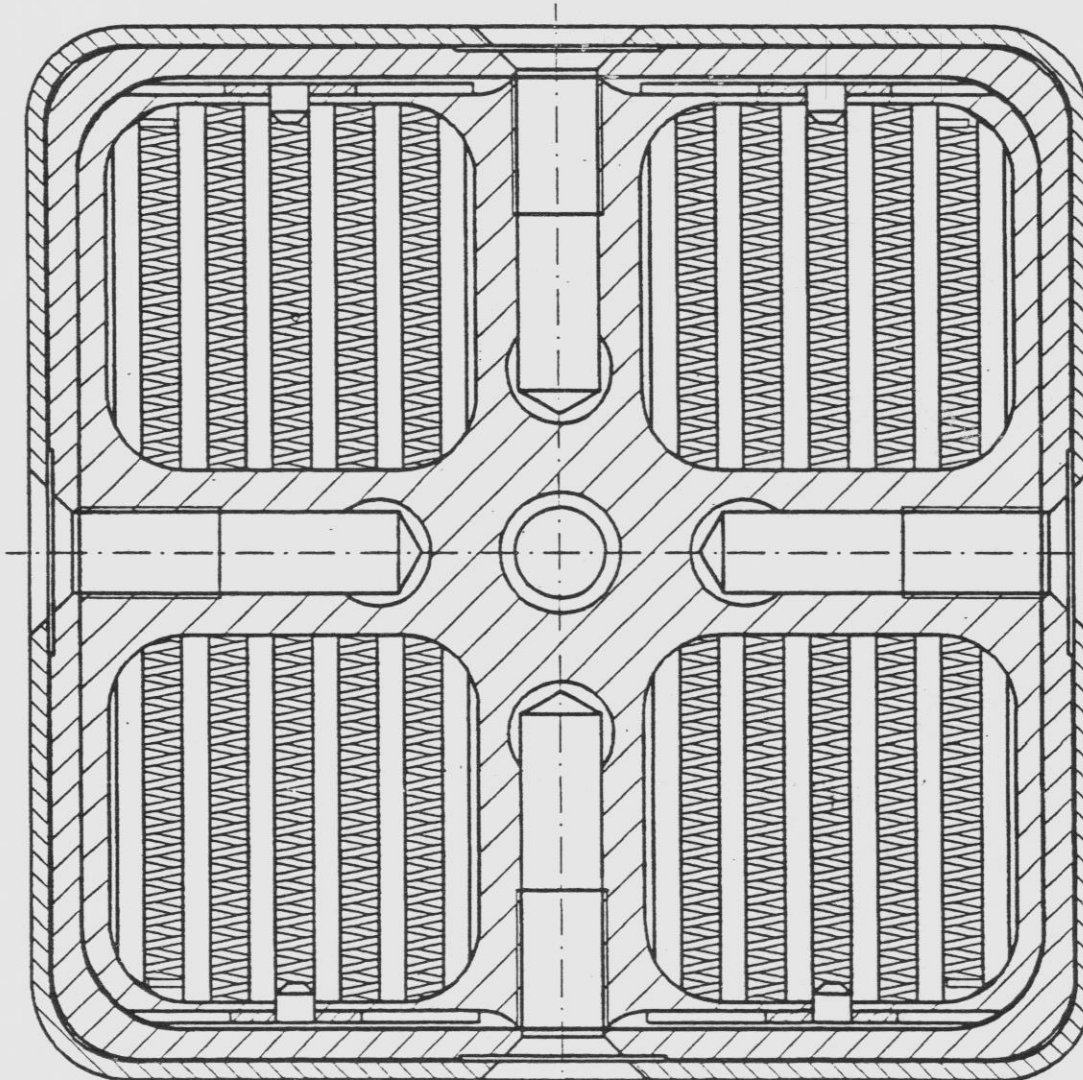
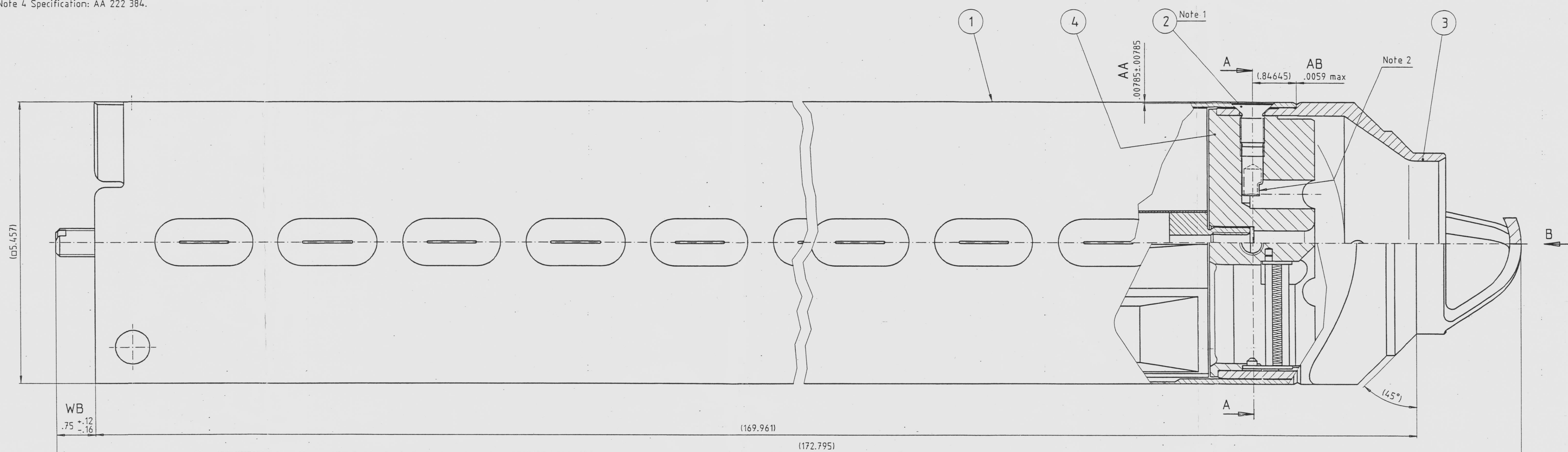
50-397  
9/14/96  
9609240225-03

DE



AA263 843U/1

- Note 1 Tightening torque 44 +9/-0 lbf-in.  
Note 2 The screw end is staved up .059-.094. HA  
Note 3 During the jointly countersinking the bottom support and the transition piece must bear against each other and the latter must also bear against the channel. The transition piece shall be centered within  $\phi .0157$  in the channel.  
Note 4 Specification: AA 222 384.



7609240225 760914 PDR ADOCK 05000397 CF					
	1	4	Bottom support	AA 263 848-A	AISI 304L
	1	3	Transition piece	AA 263 850-1	AISI 304L
	4	2	Sunk screw	AA 227 319-1	ASTM B408
	1	1	Channel	AA 263 845-A	Zircaloy-4
B	A	Item No.	Name of item	Article No. Drawing	Material
Qty for group					Dimension, type, etc.
R <sub>1</sub> (AA) in micro-inches			Third angle projection	Conversion from millimeters into inches in accordance with ISO 370 method A.	
Prepared by			Scale		
BKB MG			1:1		
Checked by			Reference		
BKB LE			Fuel channel WNP2		
Approved by			Issued by dept	Year	Week
BKB AW			BKB	95	12
ABB Atom			AA 263 843 U		Rev list Sheet 1
					Can't

1	Position of bottom support marking toward channel side 2 added.	BKB	BKB	BKB	96 12
No.	Revision	Prep'd	Ch'd	App'd	Year Week

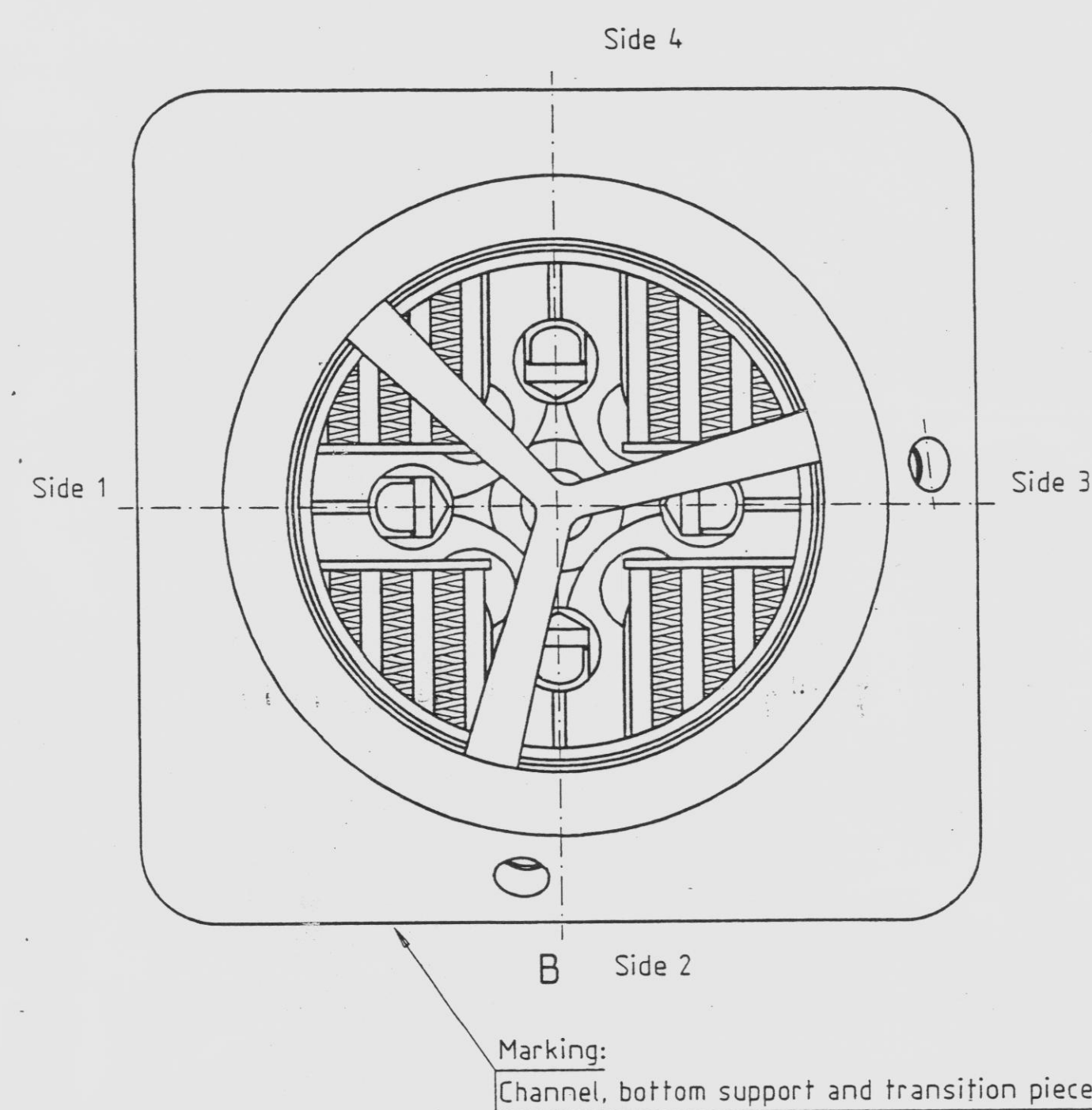
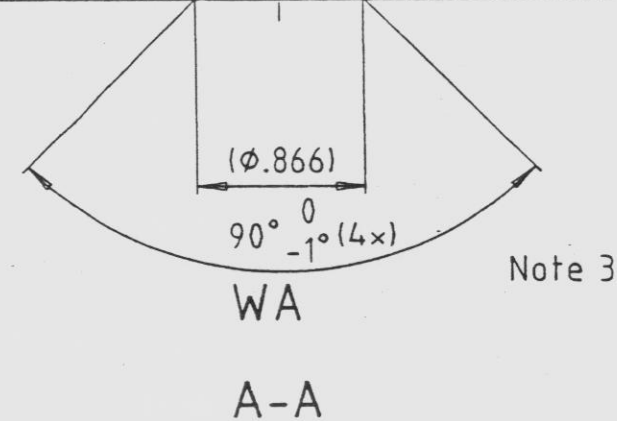
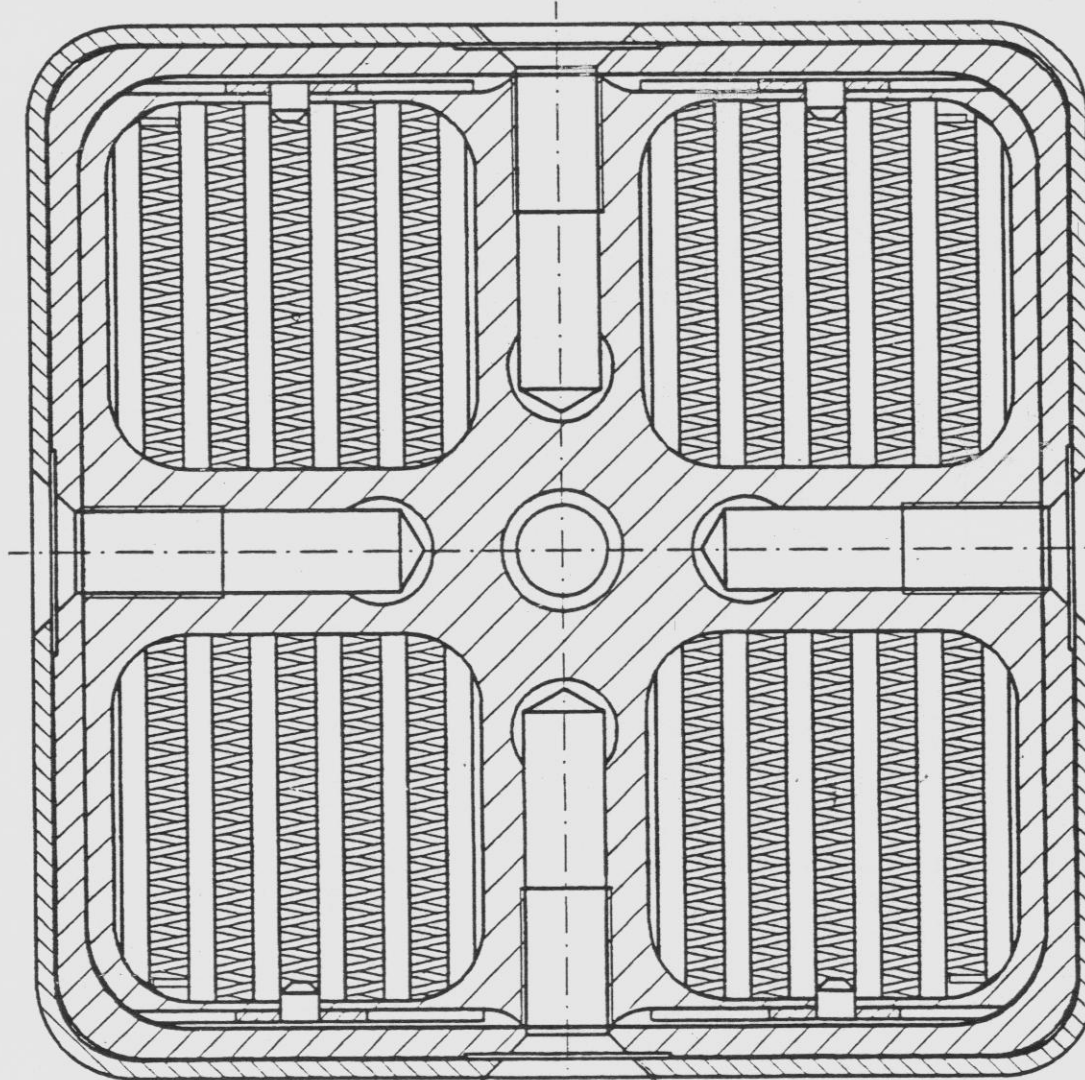
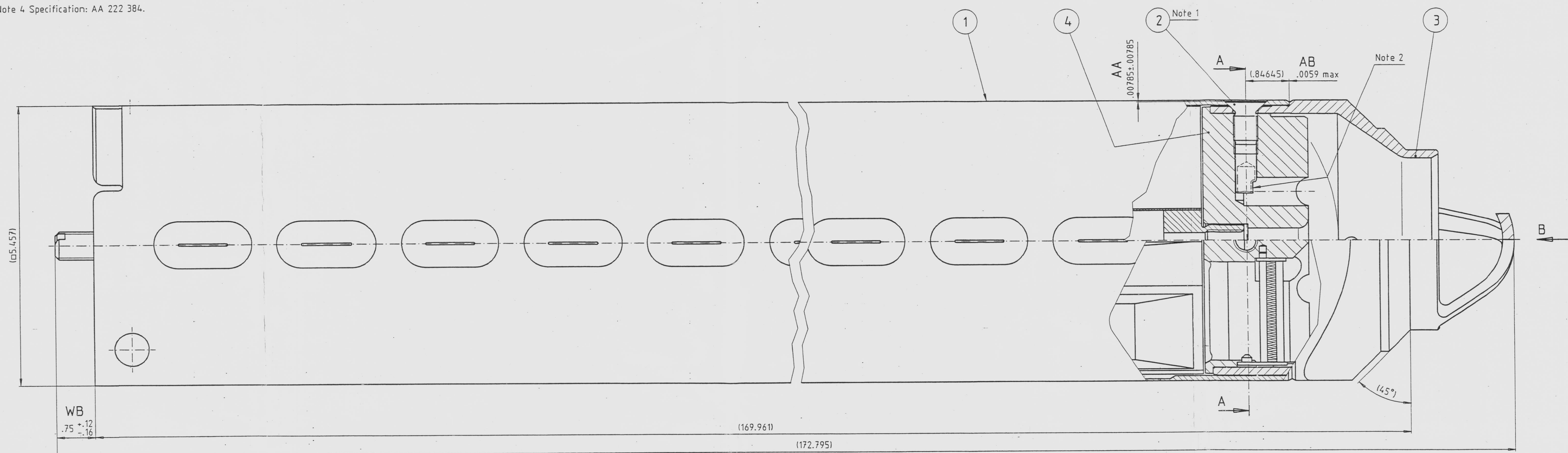
50-397  
9/14/96  
9609240217-04

D  
E



AA263 843U/1

- Note 1 Tightening torque 44  $\pm$  9/-0 lbf-in.  
Note 2 The screw end is staved up .059-.094. HA  
Note 3 During the jointly countersinking the bottom support and the transition piece must bear against each other and the latter must also bear against the channel. The transition piece shall be centered within  $\phi$ .0157 in the channel.  
Note 4 Specification: AA 222 384.



1	Position of bottom support marking toward channel side 2 added.	BKB	BKB	BKB	96 12
No.	Revision	Prep'd	Chk'd	App'd	Year Week

9609240228 960814 PDR ADGCK 0900397 CF					
1	4	Bottom support	AA 263 848-A	AISI 304L	
1	3	Transition piece	AA 263 850-1	AISI 304L	
4	2	Sunk screw	AA 227 319-1	ASTM B408	
1	1	Channel	AA 263 845-A	Zircaloy-4	
B	A	Item	Name of item	Article No. Drawing	Material
Qty for group					Dimension, type, etc.
			Third angle projection		
Prepared by			Scale		
BKB MG			1:1		
Checked by			Reference		
BKB LE			Fuel channel WNP2		
Approved by			Year week		
BKB AW			95 12		
ABB Atom			AA 263 843 U		
			Rev ind Sheet 1		
			Cont		

50-391  
9/14/96  
9609240217-05

E