

ACCELERATED DISTRIBUTION DEMONSTRATION SYSTEM

REGULATOR INFORMATION DISTRIBUTION SYSTEM (RIDS)

ACCESSION NBR: 8906020168 DOC. DATE: 89/04/28 NOTARIZED: NO DOCKET #
 FACIL: 50-397 WPPSS Nuclear Project, Unit 2, Washington Public Power 05000397
 AUTH. NAME AUTHOR AFFILIATION
 SORESEN, G.C. Washington Public Power Supply System *See Rept.*
 RECIP. NAME RECIPIENT AFFILIATION
 Document Control Branch (Document Control Desk)

SUBJECT: Forwards status rept for Apr 1989 in response to Generic Ltr
 88-14 "Instrument Air Supply Sys Problems Affecting...."

DISTRIBUTION CODE: A048D COPIES RECEIVED: LTR 1 ENCL 1 SIZE: 102
 TITLE: OR/Licensing Submittal: Equipment Qualification

NOTES:

	RECIPIENT ID CODE/NAME	COPIES LTTR ENCL	RECIPIENT ID CODE/NAME	COPIES LTTR ENCL
	PD5 LA	1 0	PD5 PD	1 0
	SAMWORTH, R	1 1		
INTERNAL:	ACRS	6 6	NRR/DEST/ADE 8H	1 0
	NRR/DEST/MEB 9H	1 1	NRR/DEST/SGB 8D	1 1
	NUDOCS-ABSTRACT	1 1	OC/LFMB	1 0
	OGC/HDS2	1 1	<u>REG FILE</u> 01	1 1
	RES/DSIR/EIB	1 1		
EXTERNAL:	LPDR	1 1	NRC PDR	1 1
	NSIC	1 1		

NOTE TO ALL "RIDS" RECIPIENTS:

PLEASE HELP US TO REDUCE WASTE! CONTACT THE DOCUMENT CONTROL DESK,
 ROOM P1-37 (EXT. 20079) TO ELIMINATE YOUR NAME FROM DISTRIBUTION
 LISTS FOR DOCUMENTS YOU DON'T NEED!

TOTAL NUMBER OF COPIES REQUIRED: LTTR 20 ENCL 16

*m/122
9/1*

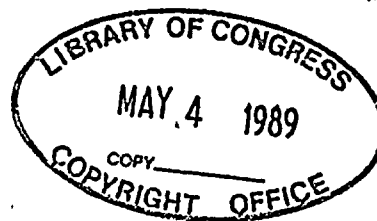


WASHINGTON PUBLIC POWER SUPPLY SYSTEM

P.O. Box 968 • 3000 George Washington Way • Richland, Washington 99352

April 28, 1989
G02-89-081

MAY 04 1989



Docket No. 50-397

U. S. Nuclear Regulatory Commission
Attn: Document Control Desk
Mail Station P1-137
Washington, D.C. 20555

Gentlemen:

Subject: NUCLEAR PLANT NO. 2
GENERIC LETTER 88-14, "INSTRUMENT AIR SUPPLY
SYSTEM PROBLEMS AFFECTING SAFETY-RELATED EQUIPMENT"

Reference: 1) Letter, G02-89-011, GC Sorensen (SS) to NRC
same subject, dated January 30, 1989
2) Letter, G02-89-025, GC Sorensen (SS) to NRC
same subject, dated February 24, 1989

In Reference 1) we committed to provide status reports on our response to the subject Generic Letter in February and April 1989. The February report was provided with Reference 2). Attached is our April status report.

Very truly yours,

R. Sorensen
for G. C. Sorensen, Manager
Regulatory Programs

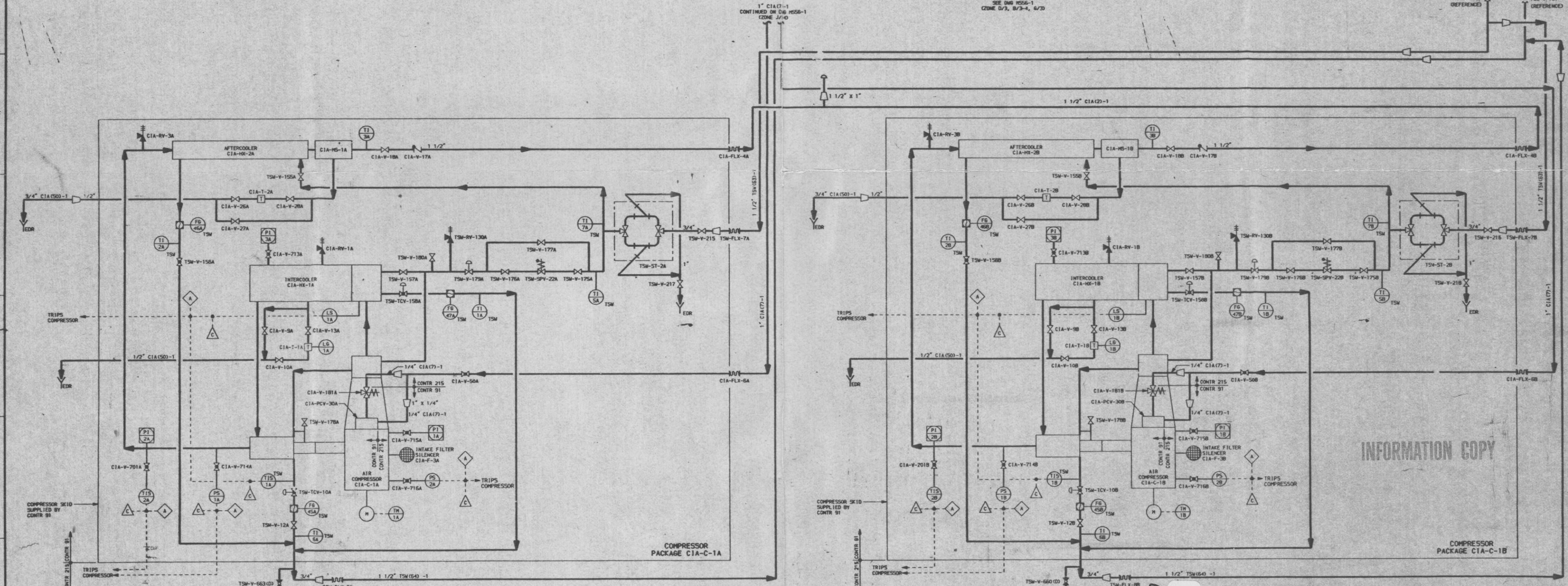
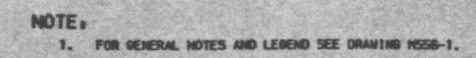
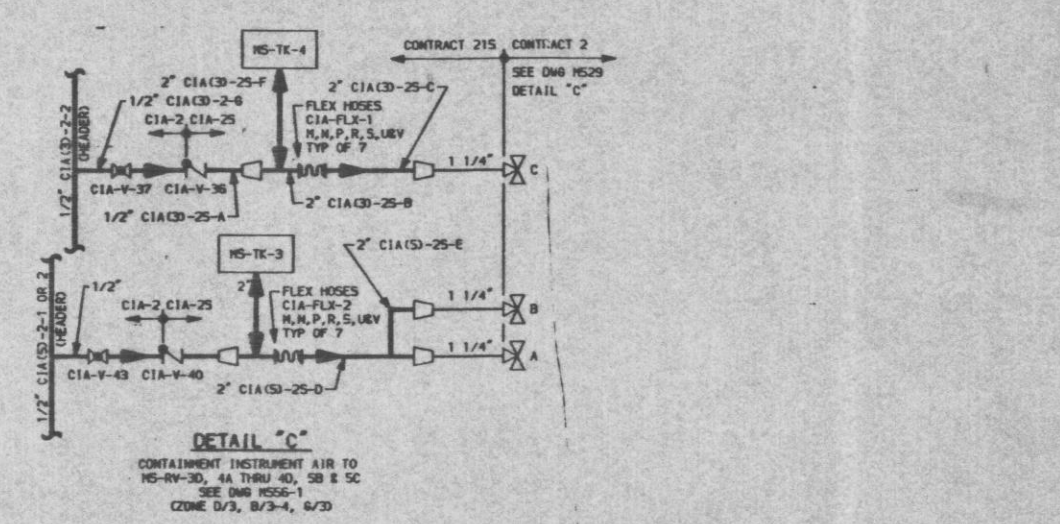
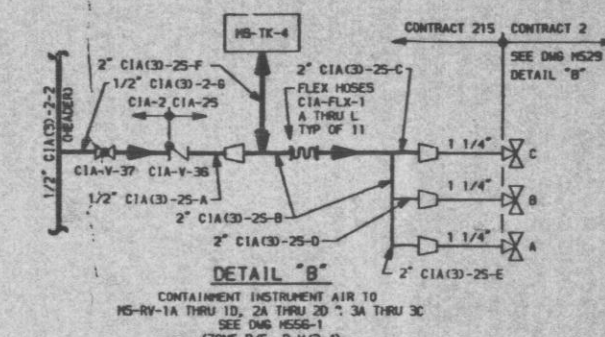
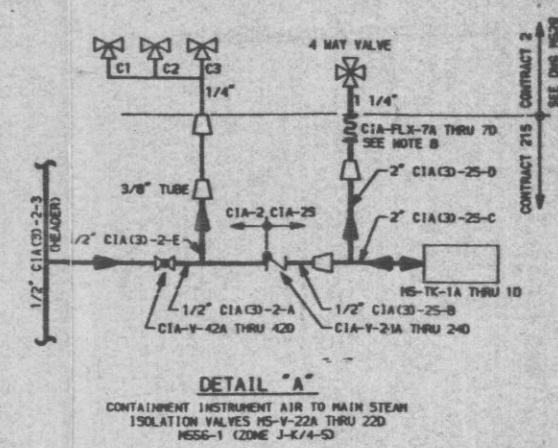
PLP/bk

cc: JB Martin - NRC RV
NS Reynolds - BCP&R
RB Samworth - NRC
DL Williams - BPA/399
NRC Site Inspector - 901A

A048
/

8906020168 890428
PDR ADOCK 05000397
P PNU

ACCELERATOR IDENTIFICATION	A	B	C	D	E	F	G
MS-TC-4A	1/2 ¹ CIAC-25-13	2 ¹ CIAC-25-13	3 ¹ CIAC-25-13	4 ¹ CIAC-25-13	5 ¹ CIAC-25-13	6 ¹ CIAC-25-13	1/2 ¹ CIAC-2-13
MS-TC-4B	1/2 ¹ CIAC-25-14	2 ¹ CIAC-25-14	3 ¹ CIAC-25-14	4 ¹ CIAC-25-14	5 ¹ CIAC-25-14	6 ¹ CIAC-25-14	1/2 ¹ CIAC-2-14
MS-TC-4C	1/2 ¹ CIAC-25-15	2 ¹ CIAC-25-15	3 ¹ CIAC-25-15	4 ¹ CIAC-25-15	5 ¹ CIAC-25-15	6 ¹ CIAC-25-15	1/2 ¹ CIAC-2-15
MS-TC-4D	1/2 ¹ CIAC-25-16	2 ¹ CIAC-25-16	3 ¹ CIAC-25-16	4 ¹ CIAC-25-16	5 ¹ CIAC-25-16	6 ¹ CIAC-25-16	1/2 ¹ CIAC-2-16
MS-TC-4E	1/2 ¹ CIAC-25-17	2 ¹ CIAC-25-17	3 ¹ CIAC-25-17	4 ¹ CIAC-25-17	5 ¹ CIAC-25-17	6 ¹ CIAC-25-17	1/2 ¹ CIAC-2-17
MS-TC-4F	1/2 ¹ CIAC-25-18	2 ¹ CIAC-25-18	3 ¹ CIAC-25-18	4 ¹ CIAC-25-18	5 ¹ CIAC-25-18	6 ¹ CIAC-25-18	1/2 ¹ CIAC-2-18
MS-TC-4G	1/2 ¹ CIAC-25-19	2 ¹ CIAC-25-19	3 ¹ CIAC-25-19	4 ¹ CIAC-25-19	5 ¹ CIAC-25-19	6 ¹ CIAC-25-19	1/2 ¹ CIAC-2-19
MS-TC-4H	1/2 ¹ CIAC-25-20	2 ¹ CIAC-25-20	3 ¹ CIAC-25-20	4 ¹ CIAC-25-20	5 ¹ CIAC-25-20	6 ¹ CIAC-25-20	1/2 ¹ CIAC-2-20
MS-TC-4J	1/2 ¹ CIAC-25-21	2 ¹ CIAC-25-21	3 ¹ CIAC-25-21	4 ¹ CIAC-25-21	5 ¹ CIAC-25-21	6 ¹ CIAC-25-21	1/2 ¹ CIAC-2-21
MS-TC-4K	1/2 ¹ CIAC-25-22	2 ¹ CIAC-25-22	3 ¹ CIAC-25-22	4 ¹ CIAC-25-22	5 ¹ CIAC-25-22	6 ¹ CIAC-25-22	1/2 ¹ CIAC-2-22
MS-TC-4L	1/2 ¹ CIAC-25-23	2 ¹ CIAC-25-23	3 ¹ CIAC-25-23	4 ¹ CIAC-25-23	5 ¹ CIAC-25-23	6 ¹ CIAC-25-23	1/2 ¹ CIAC-2-23
MS-TC-4M	1/2 ¹ CIAC-25-24	2 ¹ CIAC-25-24	3 ¹ CIAC-25-24	4 ¹ CIAC-25-24	5 ¹ CIAC-25-24	6 ¹ CIAC-25-24	1/2 ¹ CIAC-2-24
MS-TC-4N	1/2 ¹ CIAC-25-9	2 ¹ CIAC-25-9	3 ¹ CIAC-25-9	4 ¹ CIAC-25-9	5 ¹ CIAC-25-9	6 ¹ CIAC-25-9	1/2 ¹ CIAC-2-2
MS-TC-4P	1/2 ¹ CIAC-25-25	2 ¹ CIAC-25-25	3 ¹ CIAC-25-25	4 ¹ CIAC-25-25	5 ¹ CIAC-25-25	6 ¹ CIAC-25-25	1/2 ¹ CIAC-2-25
MS-TC-4R	1/2 ¹ CIAC-25-26	2 ¹ CIAC-25-26	3 ¹ CIAC-25-26	4 ¹ CIAC-25-26	5 ¹ CIAC-25-26	6 ¹ CIAC-25-26	1/2 ¹ CIAC-2-26
MS-TC-4S	1/2 ¹ CIAC-25-27	2 ¹ CIAC-25-27	3 ¹ CIAC-25-27	4 ¹ CIAC-25-27	5 ¹ CIAC-25-27	6 ¹ CIAC-25-27	1/2 ¹ CIAC-2-27
MS-TC-4U	1/2 ¹ CIAC-25-28	2 ¹ CIAC-25-28	3 ¹ CIAC-25-28	4 ¹ CIAC-25-28	5 ¹ CIAC-25-28	6 ¹ CIAC-25-28	1/2 ¹ CIAC-2-28
MS-TC-4V	1/2 ¹ CIAC-25-29	2 ¹ CIAC-25-29	3 ¹ CIAC-25-29	4 ¹ CIAC-25-29	5 ¹ CIAC-25-29	6 ¹ CIAC-25-29	1/2 ¹ CIAC-2-29
MS-TC-1A	1/2 ¹ CIAC-2-5	1/2 ¹ CIAC-2-5	2 ¹ CIAC-2-5	2 ¹ CIAC-2-5	1/2 ¹ CIAC-2-9	—	—
MS-TC-1B	1/2 ¹ CIAC-2-6	1/2 ¹ CIAC-2-6	2 ¹ CIAC-2-6	2 ¹ CIAC-2-6	1/2 ¹ CIAC-2-10	—	—
MS-TC-1C	1/2 ¹ CIAC-2-7	1/2 ¹ CIAC-2-7	2 ¹ CIAC-2-7	2 ¹ CIAC-2-7	1/2 ¹ CIAC-2-11	—	—
MS-TC-1D	1/2 ¹ CIAC-2-8	1/2 ¹ CIAC-2-8	2 ¹ CIAC-2-8	2 ¹ CIAC-2-8	1/2 ¹ CIAC-2-12	—	—



INFORMATION COPY

8906020168-01

FSAR FIG NO. 9.3-2B
FSAR FIG NO. 3.2-21B


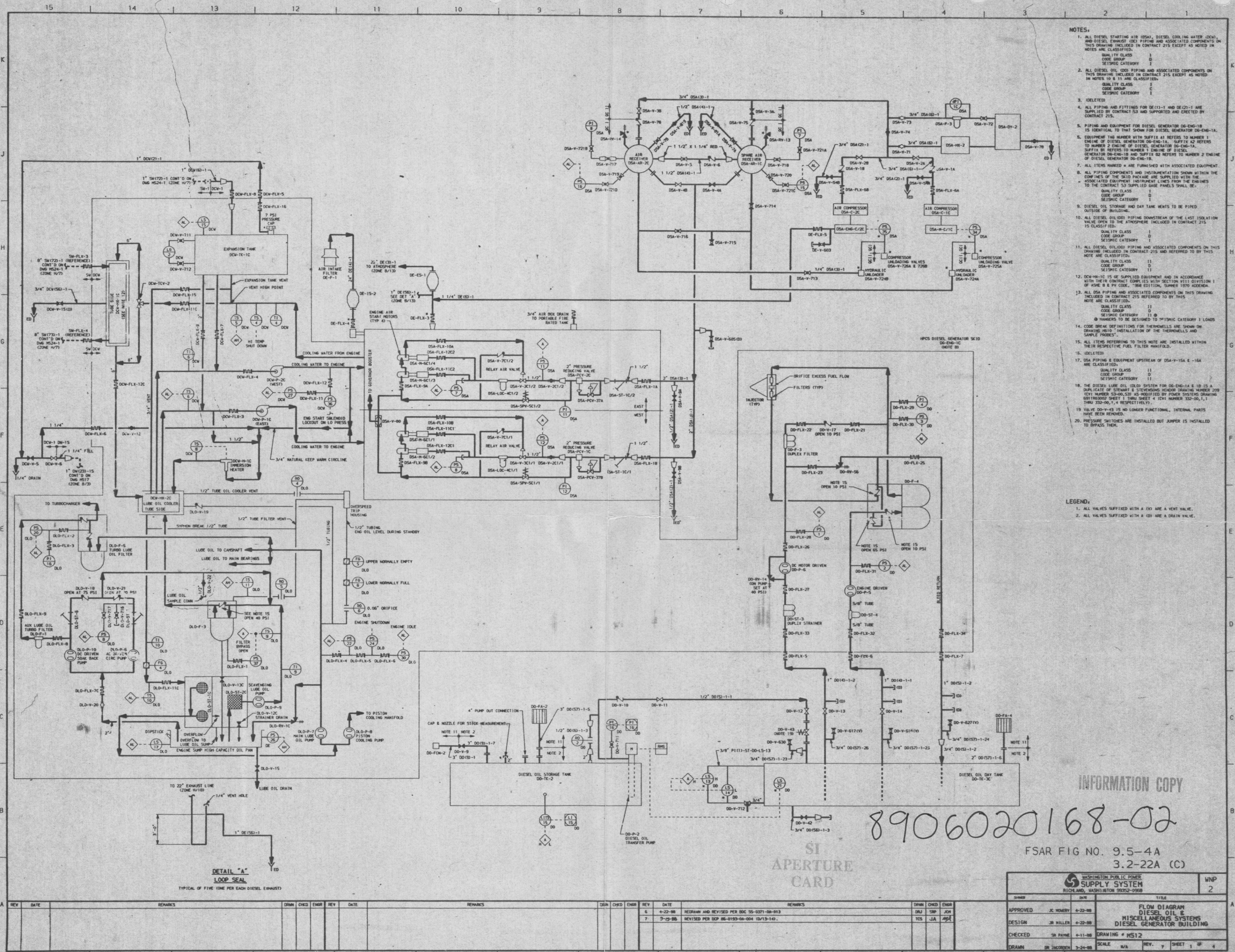
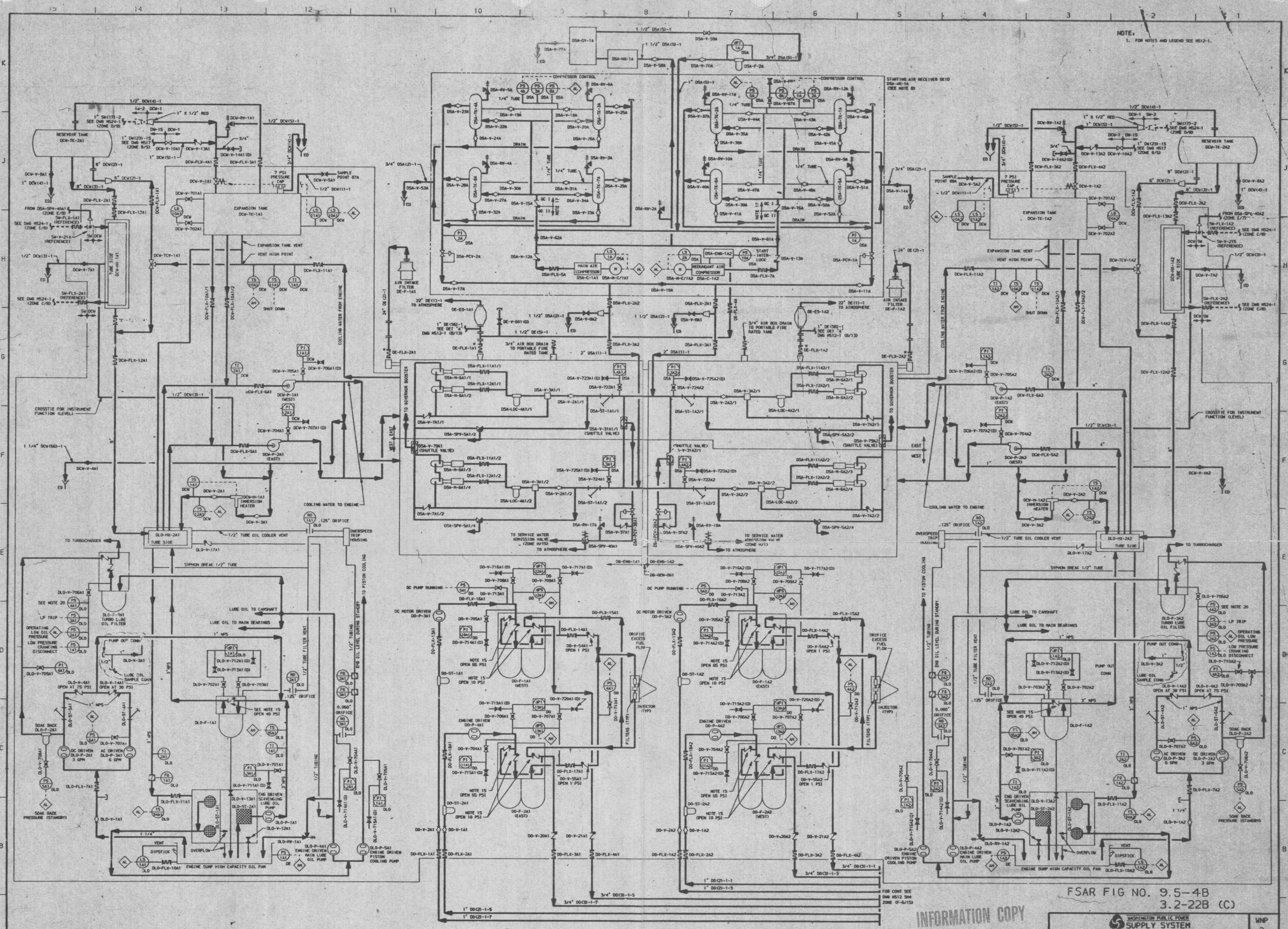
 WASHINGTON PUBLIC POWER SUPPLY SYSTEM RICHLAND, WASHINGTON 99352-0968		WNP 2
SHEET	DATE	TITLE
APPROVED <i>RL/ghd</i> 4-25-88		FLOW DIAGRAM
DESIGN <i>RL/ghd</i> 4-25-88		CONTAINMENT INSTRUMENT AIR SYSTEM
CHECKED <i>RL/ghd</i> 4-14-88		DRAWING # WSS6
DRAWN	W NEX10 12-15-87	SCALE 1/8" REV. 0 SHEET 2 OF 2

FIG. 4-2 (2)





NOTE:
1. FOR NOTES AND LEGEND SEE HS12-1.

FSAR FIG NO. 9.5-4B
3.2-22B (C)

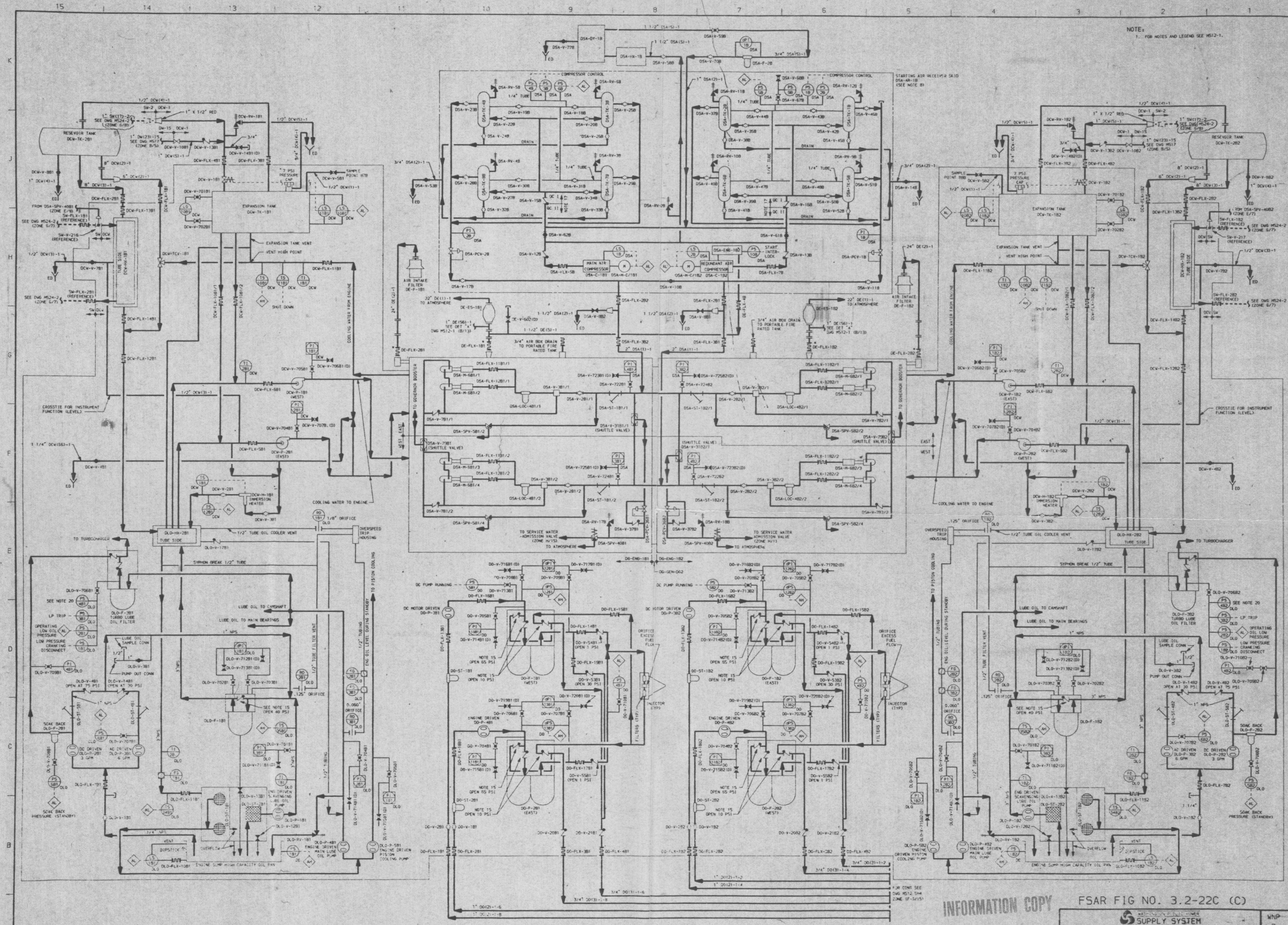
REV	DATE	REMARKS	DRWN	CHKD	ENGR	REV	DATE	REMARKS	DRWN	CHKD	ENGR
1	4-22-66	REDESIGNED AND REVISED PER SEC 55-6371-00-014				1	4-22-66	REDESIGNED AND REVISED PER SEC 55-6371-00-014			
2	9-15-66	REVISED PER SEC 55-6371-00-014 (C) 2				2	9-15-66	REVISED PER SEC 55-6371-00-014 (C) 2			

APPROVED: J. ROBERT 4-22-66
DESIGN: J. MILLER 4-22-66
CHECKED: J. PINE 4-22-66
DRAWN: J. JACOBSON 4-22-66

FOR CONT SEE
DWS HS12 SH
ZONE 6-115

ST
APERTURE
CARD

8906020168-03



NOTE:
1. FOR NOTES AND LEGEND SEE HS12-1.

INFORMATION COPY

FSAR FIG NO. 3.2-22C (C)

DESIGN	APPROVED	DATE	BY
DESIGNED BY: J. MILLER	APPROVED BY: J. MILLER	DATE: 4-22-88	BY: J. MILLER
CHECKED BY: S. P. HAYES	DATE: 4-22-88	SCALE: N/A	REV: 5
DRAWING # HS12		SHEET 3 OF 4	

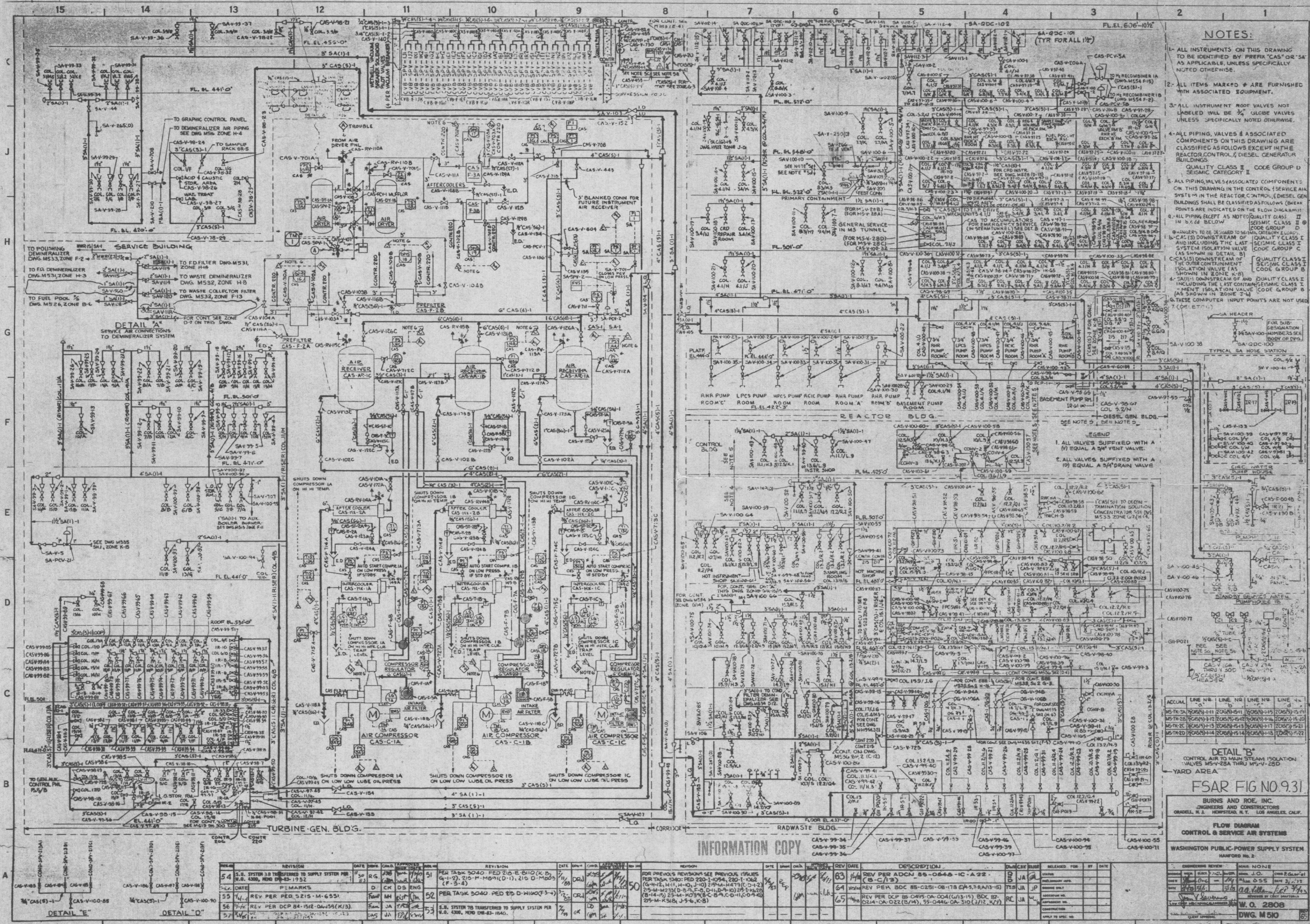
FLOW DIAGRAM
DIESEL OIL &
MISCELLANEOUS SYSTEMS
DIESEL GENERATOR BUILDING

LIBRARY OF CONGRESS
MAY 4 1988
COPYRIGHT OFFICE

SI
APERTURE
CAP

8906020168-04 FIG. 4-3(3) D

NRC TOP TIER



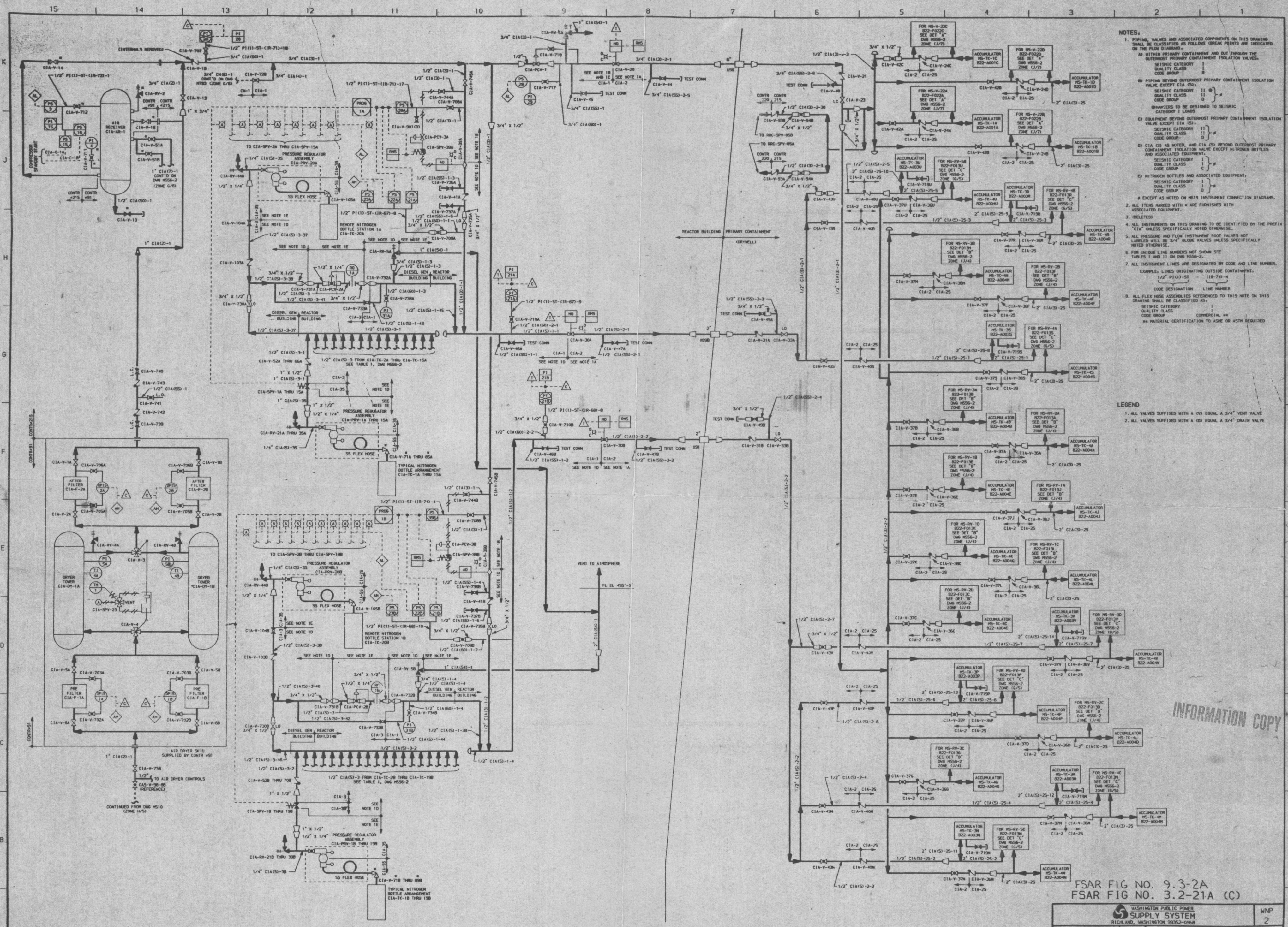
- NOTES:**
1. ALL INSTRUMENTS ON THIS DRAWING TO BE IDENTIFIED BY PREFIX "CAS" OR "SA" AS APPLICABLE, UNLESS SPECIFICALLY NOTED OTHERWISE.
 2. ALL ITEMS MARKED * ARE FURNISHED WITH ASSOCIATED EQUIPMENT.
 3. ALL INSTRUMENT ROOF VALVES NOT LABELED WILL BE 3/4" GLOBE VALVES UNLESS SPECIFICALLY NOTED OTHERWISE.
 4. ALL PIPING, VALVES & ASSOCIATED COMPONENTS ON THIS DRAWING ARE CLASSIFIED AS FOLLOWS EXCEPT IN THE REACTOR CONTROL & DIESEL GENERATOR BUILDINGS.
QUALITY CLASS II CODE GROUP D
SEISMIC CATEGORY II
 5. ALL PIPING, VALVES & ASSOCIATED COMPONENTS ON THIS DRAWING IN THE REACTOR SERVICE AIR SYSTEM IN THE REACTOR CONTROL BUILDING SHALL BE CLASSIFIED AS FOLLOWS (BREAK POINTS ARE INDICATED ON THE FLOW DIAGRAM):
SEISMIC CLASS II CODE GROUP D
SEISMIC CATEGORY II
 6. ALL PIPING EXCEPT AS NOTED QUALITY CLASS II CODE GROUP D
SEISMIC CATEGORY II
 7. QUALITY CLASS II CODE GROUP D
SEISMIC CATEGORY II
 8. QUALITY CLASS II CODE GROUP D
SEISMIC CATEGORY II
 9. QUALITY CLASS II CODE GROUP D
SEISMIC CATEGORY II
 10. QUALITY CLASS II CODE GROUP D
SEISMIC CATEGORY II
 11. QUALITY CLASS II CODE GROUP D
SEISMIC CATEGORY II
 12. QUALITY CLASS II CODE GROUP D
SEISMIC CATEGORY II
 13. QUALITY CLASS II CODE GROUP D
SEISMIC CATEGORY II
 14. QUALITY CLASS II CODE GROUP D
SEISMIC CATEGORY II
 15. QUALITY CLASS II CODE GROUP D
SEISMIC CATEGORY II
 16. QUALITY CLASS II CODE GROUP D
SEISMIC CATEGORY II
 17. QUALITY CLASS II CODE GROUP D
SEISMIC CATEGORY II
 18. QUALITY CLASS II CODE GROUP D
SEISMIC CATEGORY II
 19. QUALITY CLASS II CODE GROUP D
SEISMIC CATEGORY II
 20. QUALITY CLASS II CODE GROUP D
SEISMIC CATEGORY II
 21. QUALITY CLASS II CODE GROUP D
SEISMIC CATEGORY II
 22. QUALITY CLASS II CODE GROUP D
SEISMIC CATEGORY II
 23. QUALITY CLASS II CODE GROUP D
SEISMIC CATEGORY II
 24. QUALITY CLASS II CODE GROUP D
SEISMIC CATEGORY II
 25. QUALITY CLASS II CODE GROUP D
SEISMIC CATEGORY II
 26. QUALITY CLASS II CODE GROUP D
SEISMIC CATEGORY II
 27. QUALITY CLASS II CODE GROUP D
SEISMIC CATEGORY II
 28. QUALITY CLASS II CODE GROUP D
SEISMIC CATEGORY II
 29. QUALITY CLASS II CODE GROUP D
SEISMIC CATEGORY II
 30. QUALITY CLASS II CODE GROUP D
SEISMIC CATEGORY II
 31. QUALITY CLASS II CODE GROUP D
SEISMIC CATEGORY II
 32. QUALITY CLASS II CODE GROUP D
SEISMIC CATEGORY II
 33. QUALITY CLASS II CODE GROUP D
SEISMIC CATEGORY II
 34. QUALITY CLASS II CODE GROUP D
SEISMIC CATEGORY II
 35. QUALITY CLASS II CODE GROUP D
SEISMIC CATEGORY II
 36. QUALITY CLASS II CODE GROUP D
SEISMIC CATEGORY II
 37. QUALITY CLASS II CODE GROUP D
SEISMIC CATEGORY II
 38. QUALITY CLASS II CODE GROUP D
SEISMIC CATEGORY II
 39. QUALITY CLASS II CODE GROUP D
SEISMIC CATEGORY II
 40. QUALITY CLASS II CODE GROUP D
SEISMIC CATEGORY II
 41. QUALITY CLASS II CODE GROUP D
SEISMIC CATEGORY II
 42. QUALITY CLASS II CODE GROUP D
SEISMIC CATEGORY II
 43. QUALITY CLASS II CODE GROUP D
SEISMIC CATEGORY II
 44. QUALITY CLASS II CODE GROUP D
SEISMIC CATEGORY II
 45. QUALITY CLASS II CODE GROUP D
SEISMIC CATEGORY II
 46. QUALITY CLASS II CODE GROUP D
SEISMIC CATEGORY II
 47. QUALITY CLASS II CODE GROUP D
SEISMIC CATEGORY II
 48. QUALITY CLASS II CODE GROUP D
SEISMIC CATEGORY II
 49. QUALITY CLASS II CODE GROUP D
SEISMIC CATEGORY II
 50. QUALITY CLASS II CODE GROUP D
SEISMIC CATEGORY II
 51. QUALITY CLASS II CODE GROUP D
SEISMIC CATEGORY II
 52. QUALITY CLASS II CODE GROUP D
SEISMIC CATEGORY II
 53. QUALITY CLASS II CODE GROUP D
SEISMIC CATEGORY II
 54. QUALITY CLASS II CODE GROUP D
SEISMIC CATEGORY II
 55. QUALITY CLASS II CODE GROUP D
SEISMIC CATEGORY II
 56. QUALITY CLASS II CODE GROUP D
SEISMIC CATEGORY II
 57. QUALITY CLASS II CODE GROUP D
SEISMIC CATEGORY II
 58. QUALITY CLASS II CODE GROUP D
SEISMIC CATEGORY II
 59. QUALITY CLASS II CODE GROUP D
SEISMIC CATEGORY II
 60. QUALITY CLASS II CODE GROUP D
SEISMIC CATEGORY II
 61. QUALITY CLASS II CODE GROUP D
SEISMIC CATEGORY II
 62. QUALITY CLASS II CODE GROUP D
SEISMIC CATEGORY II
 63. QUALITY CLASS II CODE GROUP D
SEISMIC CATEGORY II
 64. QUALITY CLASS II CODE GROUP D
SEISMIC CATEGORY II
 65. QUALITY CLASS II CODE GROUP D
SEISMIC CATEGORY II
 66. QUALITY CLASS II CODE GROUP D
SEISMIC CATEGORY II
 67. QUALITY CLASS II CODE GROUP D
SEISMIC CATEGORY II
 68. QUALITY CLASS II CODE GROUP D
SEISMIC CATEGORY II
 69. QUALITY CLASS II CODE GROUP D
SEISMIC CATEGORY II
 70. QUALITY CLASS II CODE GROUP D
SEISMIC CATEGORY II
 71. QUALITY CLASS II CODE GROUP D
SEISMIC CATEGORY II
 72. QUALITY CLASS II CODE GROUP D
SEISMIC CATEGORY II
 73. QUALITY CLASS II CODE GROUP D
SEISMIC CATEGORY II
 74. QUALITY CLASS II CODE GROUP D
SEISMIC CATEGORY II
 75. QUALITY CLASS II CODE GROUP D
SEISMIC CATEGORY II
 76. QUALITY CLASS II CODE GROUP D
SEISMIC CATEGORY II
 77. QUALITY CLASS II CODE GROUP D
SEISMIC CATEGORY II
 78. QUALITY CLASS II CODE GROUP D
SEISMIC CATEGORY II
 79. QUALITY CLASS II CODE GROUP D
SEISMIC CATEGORY II
 80. QUALITY CLASS II CODE GROUP D
SEISMIC CATEGORY II
 81. QUALITY CLASS II CODE GROUP D
SEISMIC CATEGORY II
 82. QUALITY CLASS II CODE GROUP D
SEISMIC CATEGORY II
 83. QUALITY CLASS II CODE GROUP D
SEISMIC CATEGORY II
 84. QUALITY CLASS II CODE GROUP D
SEISMIC CATEGORY II
 85. QUALITY CLASS II CODE GROUP D
SEISMIC CATEGORY II
 86. QUALITY CLASS II CODE GROUP D
SEISMIC CATEGORY II
 87. QUALITY CLASS II CODE GROUP D
SEISMIC CATEGORY II
 88. QUALITY CLASS II CODE GROUP D
SEISMIC CATEGORY II
 89. QUALITY CLASS II CODE GROUP D
SEISMIC CATEGORY II
 90. QUALITY CLASS II CODE GROUP D
SEISMIC CATEGORY II
 91. QUALITY CLASS II CODE GROUP D
SEISMIC CATEGORY II
 92. QUALITY CLASS II CODE GROUP D
SEISMIC CATEGORY II
 93. QUALITY CLASS II CODE GROUP D
SEISMIC CATEGORY II
 94. QUALITY CLASS II CODE GROUP D
SEISMIC CATEGORY II
 95. QUALITY CLASS II CODE GROUP D
SEISMIC CATEGORY II
 96. QUALITY CLASS II CODE GROUP D
SEISMIC CATEGORY II
 97. QUALITY CLASS II CODE GROUP D
SEISMIC CATEGORY II
 98. QUALITY CLASS II CODE GROUP D
SEISMIC CATEGORY II
 99. QUALITY CLASS II CODE GROUP D
SEISMIC CATEGORY II
 100. QUALITY CLASS II CODE GROUP D
SEISMIC CATEGORY II

INFORMATION COPY

FSAR FIG. NO. 9.31
BURNS AND ROE, INC.
ENGINEERS AND ARCHITECTS
ORANGE, N.J. NEWPORT, N.H. LOS ANGELES, CALIF.
FLOW DIAGRAM
CONTROL & SERVICE AIR SYSTEMS
WASHINGTON PUBLIC POWER SUPPLY SYSTEM
HARFORD, MD.
ENGINEER REVIEW: NAME NONE
DATE: 10/1/78
BY: J.O. Jones
CHECKED: NAME NONE
DATE: 10/1/78
BY: J.O. Jones
APPROVED: NAME NONE
DATE: 10/1/78
BY: J.O. Jones
W.O. 2808
DWG. M580

SI
APERTURE
CARD

89060206805 FIG. 4-1 D



- NOTES:**
1. PIPING, VALVES AND ASSOCIATED COMPONENTS ON THIS DRAWING SHALL BE CLASSIFIED AS FOLLING GROUPS AS INDICATED ON THE FLOW DIAGRAM:
 - a. WITHIN PRIMARY CONTAINMENT AND OUT THROUGH THE OUTPOST PRIMARY CONTAINMENT ISOLATION VALVE EXCEPT CIA (3)
 - b. PIPING BEYOND OUTPOST PRIMARY CONTAINMENT ISOLATION VALVE EXCEPT CIA (3)
 - c. EQUIPMENT BEYOND OUTPOST PRIMARY CONTAINMENT ISOLATION VALVE EXCEPT CIA (3)
 - d. CIA (3) AS NOTED, AND CIA (3) BEYOND OUTPOST PRIMARY CONTAINMENT ISOLATION VALVE EXCEPT NITROGEN BOTTLES AND ASSOCIATED EQUIPMENT.
 - e. NITROGEN BOTTLES AND ASSOCIATED EQUIPMENT.
 2. ALL ITEMS MARKED WITH A ARE FURNISHED WITH ASSOCIATED EQUIPMENT.
 3. INSTRUMENTS ON THIS DRAWING TO BE IDENTIFIED BY THE PREFIX 'CIA' UNLESS SPECIFICALLY NOTED OTHERWISE.
 4. ALL PRESSURE AND FLOW INSTRUMENT VALVES NOT LABELED WILL BE 3/4\"/>

- LEGEND**
1. ALL VALVES SUFFIXED WITH A (V) EQUAL A 3/4\"/>

INFORMATION COPY

FSAR FIG NO. 9.3-2A
FSAR FIG NO. 3.2-21A (C)

REV	DATE	DESCRIPTION	DRWN	CHKD	ENGR	REV	DATE	DESCRIPTION	DRWN	CHKD	ENGR	REV	DATE	DESCRIPTION	DRWN	CHKD	ENGR
1	8-25-88	REDRAWN AND REVISED PER BOC 86-0519-0A-216	DRU	DRU	DRU	1	8-25-88	REDRAWN AND REVISED PER BOC 86-0519-0A-216	DRU	DRU	DRU	1	8-25-88	REDRAWN AND REVISED PER BOC 86-0519-0A-216	DRU	DRU	DRU

TASHEWICH PUBLIC POWER SUPPLY SYSTEM RICHMOND, WASHINGTON 99352-0968		WNP 2
APPROVED: <i>[Signature]</i> 8-25-88	DATE: 8-25-88	TITLE: FLOW DIAGRAM
DESIGN: <i>[Signature]</i> 8-25-88	DATE: 8-25-88	CONTAINMENT INSTRUMENT AIR SYSTEM
CHECKED: <i>[Signature]</i> 8-25-88	DATE: 8-25-88	DRAWING: # HSSG
DRAWN: DR JACOBSON 8-11-88	DATE: 8-11-88	SCALE: 1/4\"/>

8906020168-06 FIG. 4-2(1)

