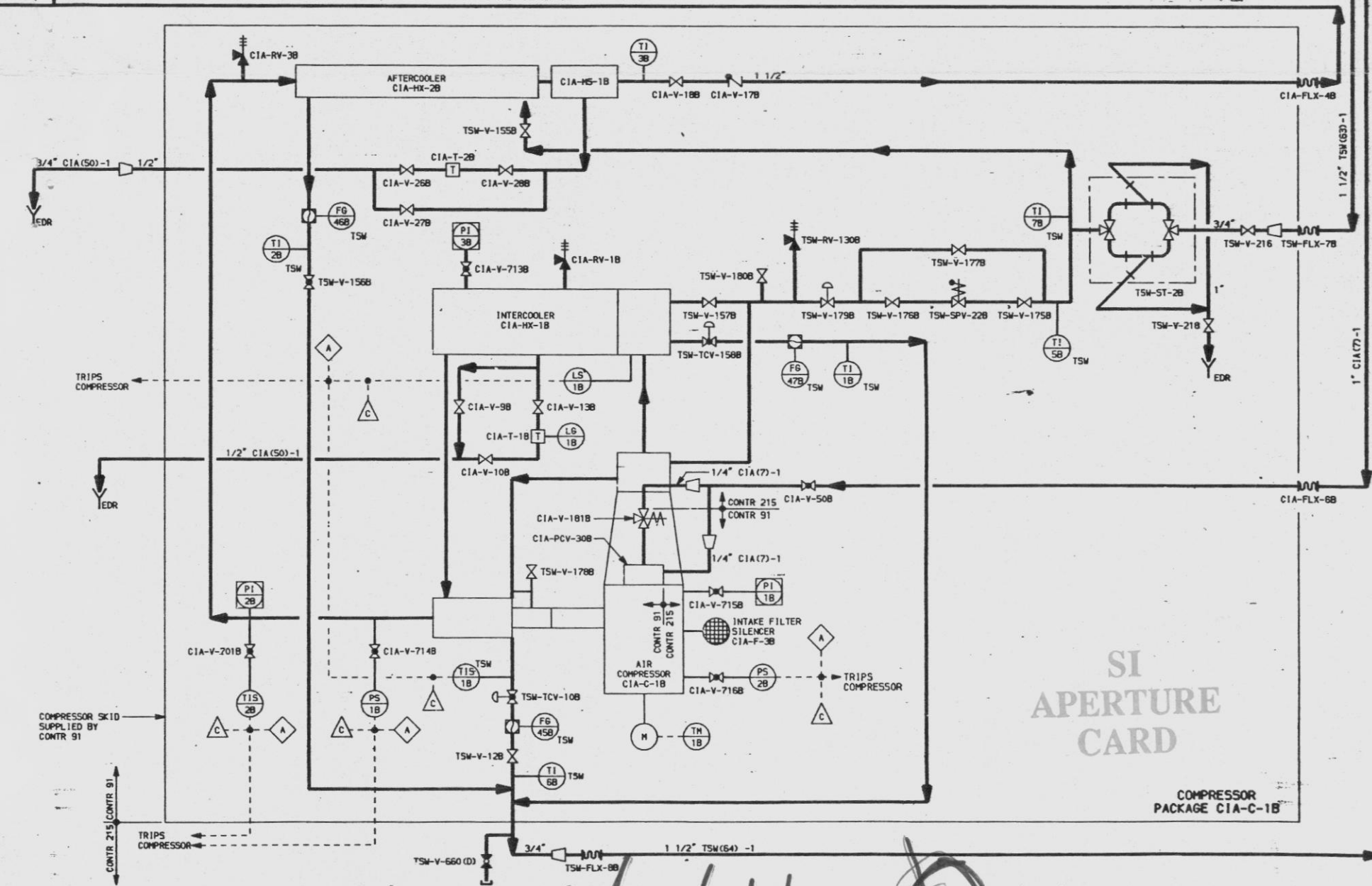
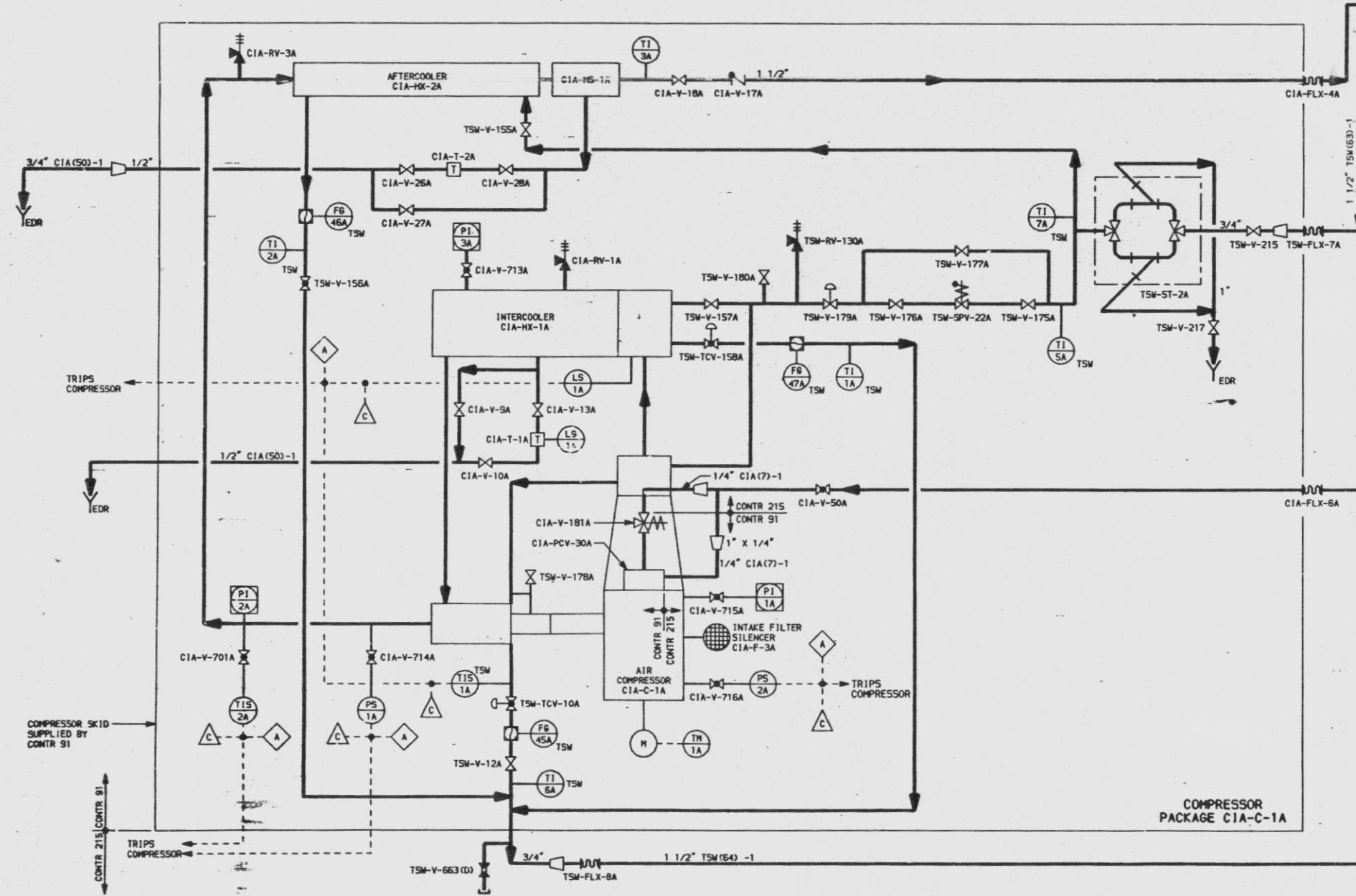
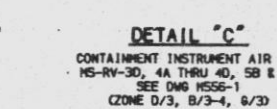
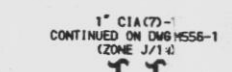
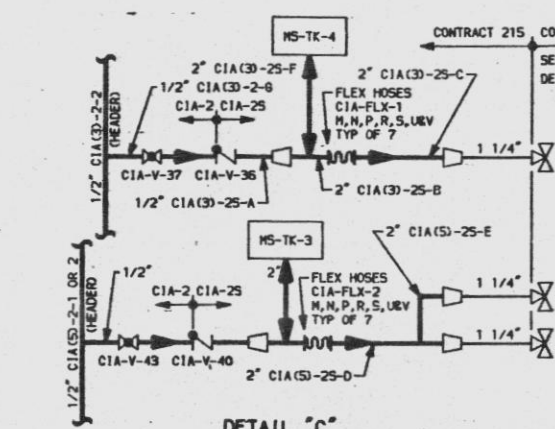
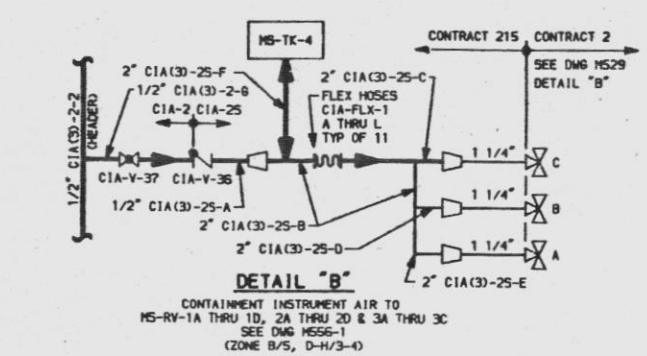
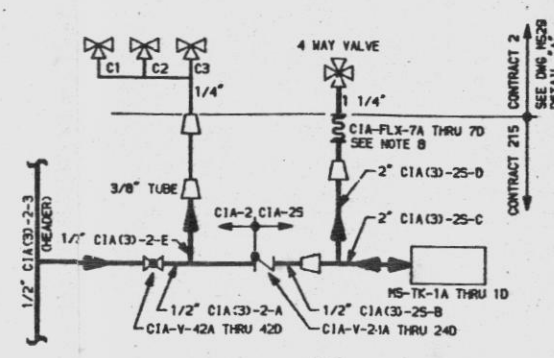



ACCOMPLISHMENT IDENTIFICATION	LINE NUMBER									
	A	B	C	D	E	F	G	H		
MS-TK-4A	1/2" CIACD-25-13	2" CIACD-25-13	2" CIACD-25-13	2" CIACD-25-31	2" CIACD-25-G	2" CIACD-25-53	1/2" CIACD-2-13			
MS-TK-4B	1/2" CIACD-25-14	2" CIACD-25-14	2" CIACD-25-14	2" CIACD-25-32	2" CIACD-25-43	2" CIACD-25-54	1/2" CIACD-2-14			
MS-TK-4C	1/2" CIACD-25-15	2" CIACD-25-15	2" CIACD-25-15	2" CIACD-25-33	2" CIACD-25-44	2" CIACD-25-55	1/2" CIACD-2-15			
MS-TK-4D	1/2" CIACD-25-16	2" CIACD-25-16	2" CIACD-25-16	2" CIACD-25-34	2" CIACD-25-45	2" CIACD-25-56	1/2" CIACD-2-16			
MS-TK-4E	1/2" CIACD-25-17	2" CIACD-25-17	2" CIACD-25-17	2" CIACD-25-35	2" CIACD-25-46	2" CIACD-25-57	1/2" CIACD-2-17			
MS-TK-4F	1/2" CIACD-25-18	2" CIACD-25-18	2" CIACD-25-18	2" CIACD-25-36	2" CIACD-25-47	2" CIACD-25-58	1/2" CIACD-2-18			
MS-TK-4G	1/2" CIACD-25-19	2" CIACD-25-19	2" CIACD-25-19	2" CIACD-25-37	2" CIACD-25-48	2" CIACD-25-59	1/2" CIACD-2-19			
MS-TK-4H	1/2" CIACD-25-20	2" CIACD-25-20	2" CIACD-25-20	2" CIACD-25-38	2" CIACD-25-49	2" CIACD-25-60	1/2" CIACD-2-20			
MS-TK-4J	1/2" CIACD-25-21	2" CIACD-25-21	2" CIACD-25-21	2" CIACD-25-39	2" CIACD-25-50	2" CIACD-25-61	1/2" CIACD-2-21			
MS-TK-4K	1/2" CIACD-25-22	2" CIACD-25-22	2" CIACD-25-22	2" CIACD-25-40	2" CIACD-25-51	2" CIACD-25-62	1/2" CIACD-2-22			
MS-TK-4L	1/2" CIACD-25-23	2" CIACD-25-23	2" CIACD-25-23	2" CIACD-25-41	2" CIACD-25-52	2" CIACD-25-63	1/2" CIACD-2-23			
MS-TK-4M	1/2" CIACD-25-24	2" CIACD-25-24	2" CIACD-25-24	2" CIACD-25-42	2" CIACD-25-15	2" CIACD-25-64	1/2" CIACD-2-24			
MS-TK-4N	1/2" CIACD-25-25	2" CIACD-25-9	2" CIACD-25-9	2" CIACD-25-2	2" CIACD-25-16	2" CIACD-25-65	1/2" CIACD-2-2			
MS-TK-4P	1/2" CIACD-25-26	2" CIACD-25-25	2" CIACD-25-25	2" CIACD-25-6	2" CIACD-25-17	2" CIACD-25-66	1/2" CIACD-2-26			
MS-TK-4R	1/2" CIACD-25-26	2" CIACD-25-26	2" CIACD-25-26	2" CIACD-25-3	2" CIACD-25-18	2" CIACD-25-67	1/2" CIACD-2-26			
MS-TK-4S	1/2" CIACD-25-27	2" CIACD-25-27	2" CIACD-25-27	2" CIACD-25-1	2" CIACD-25-19	2" CIACD-25-68	1/2" CIACD-2-27			
MS-TK-4U	1/2" CIACD-25-28	2" CIACD-25-28	2" CIACD-25-28	2" CIACD-25-5	2" CIACD-25-20	2" CIACD-25-69	1/2" CIACD-2-28			
MS-TK-4V	1/2" CIACD-25-28	2" CIACD-25-28	2" CIACD-25-28	2" CIACD-25-7	2" CIACD-25-21	2" CIACD-25-70	1/2" CIACD-2-29			
MS-TK-1A	1/2" CIACD-2-5	1/2" CIACD-25-5	2" CIACD-5	2" CIACD-25-1	1/2" CIACD-2-8					
MS-TK-1B	1/2" CIACD-2-6	1/2" CIACD-25-6	2" CIACD-6	2" CIACD-25-2	1/2" CIACD-2-10					
MS-TK-1C	1/2" CIACD-2-7	1/2" CIACD-25-7	2" CIACD-7	2" CIACD-25-3	1/2" CIACD-2-11					
MS-TK-1D	1/2" CIACD-2-8	1/2" CIACD-25-8	2" CIACD-8	2" CIACD-25-4	1/2" CIACD-2-12					



SI APERTURE CARD

Hand-drawn schematic of a refrigeration system. The diagram includes a compressor on the left, a condenser at the top, and an evaporator at the bottom. Key components and labels include:

- Compressor:** Labeled "MPC" and "COMPRESSOR" with a dashed arrow pointing left.
- Condenser:** Labeled "TSN-V-660 (3)" and "3/4\"".
- Receiver/Filter:** Labeled "TSN-FLX-90" and "1 1/2\"".
- Evaporator:** Labeled "TSN-E47 -1".
- Handwritten Number:** "8903100450" is written across the center of the diagram.
- Legend:** A box on the right contains "FSA" and "FSA" with corresponding symbols.

<h1 style="margin: 0;">INFORMATION COPY</h1>				
<h2 style="margin: 0;">FSAR FIG NO. 9.3-2B</h2> <h2 style="margin: 0;">FSAR FIG NO. 3.2-21B</h2>				
 <div style="display: inline-block; vertical-align: middle;"> WASHINGTON PUBLIC POWER SUPPLY SYSTEM <small>RICHLAND, WASHINGTON 99352-0968</small> </div>			WNP 2	
ISSUED	DATE	TITLE		
APPROVED <i>[Signature]</i> 9-25-88	<div style="margin-bottom: 10px;">FLOW DIAGRAM</div> <div style="margin-bottom: 10px;">CONTINUING INSTRUMENT AIR SYSTEM</div> <div>DRAWING # HSSG</div>			
DESIGN <i>[Signature]</i> 9-25-88				
CHECKED <i>[Signature]</i> 9-14-88				
DRAWN <i>[Signature]</i> W KLIN	DATE 12-15-87	SCALE N/A	REV. 0	SHEET 2 OF 2

15 14 13 12 11 10 9 8 7 6 5 4 3 2 1

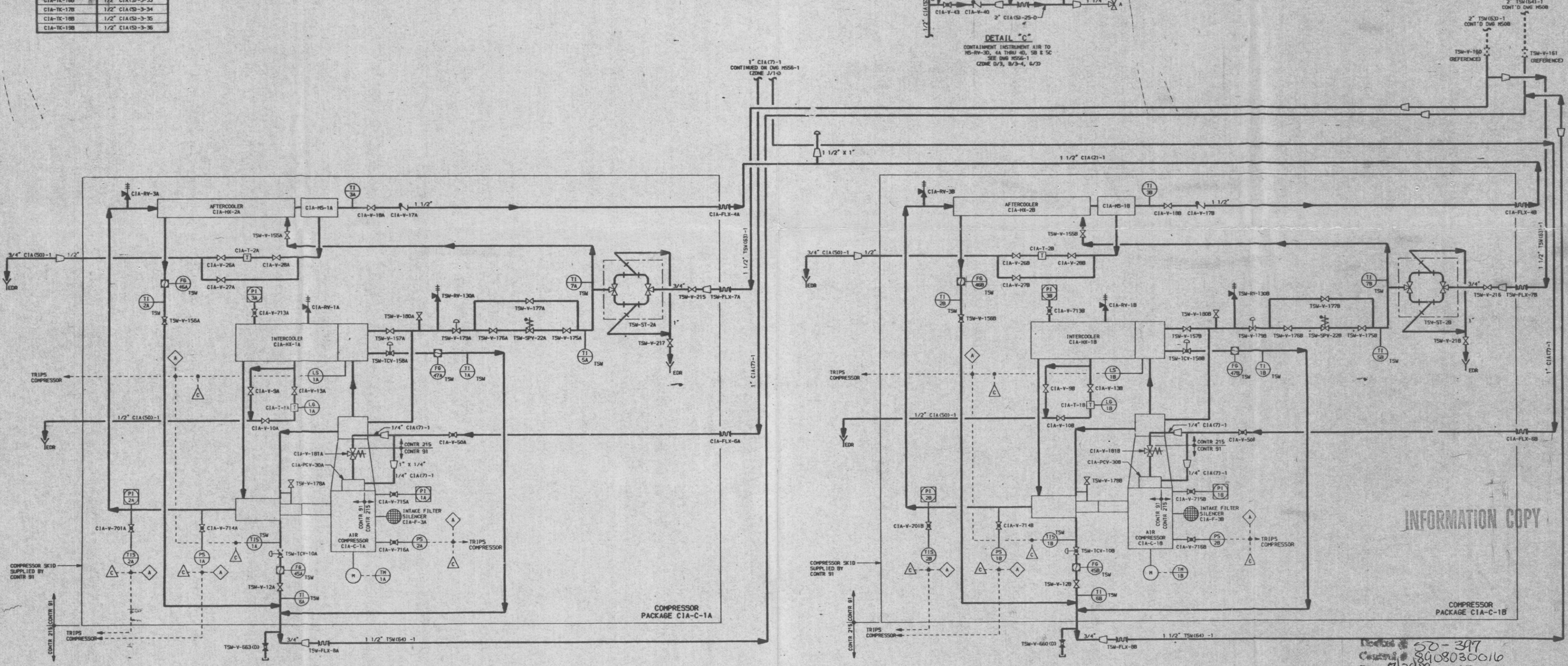
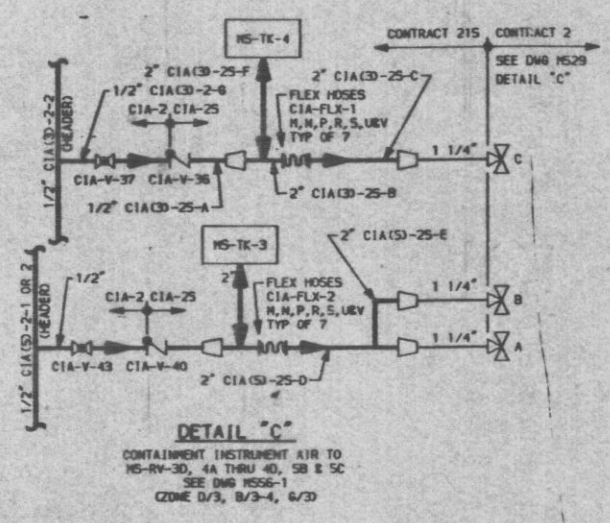
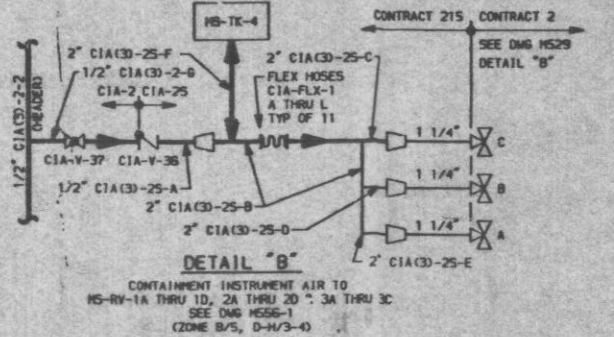
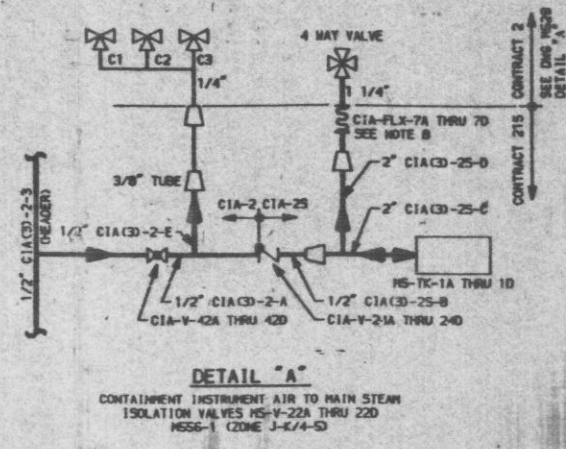
NOTE:
1. FOR GENERAL NOTES AND LEGEND SEE DRAWING HSS-1.

TABLE I

HYDROGEN SUPPLY IDENTIFICATION	LINE NUMBER
CIA-TC-2A	1/2" CIA(2)-3-5
CIA-TC-3A	1/2" CIA(2)-3-6
CIA-TC-4A	1/2" CIA(2)-3-7
CIA-TC-5A	1/2" CIA(2)-3-8
CIA-TC-6A	1/2" CIA(2)-3-9
CIA-TC-7A	1/2" CIA(2)-3-10
CIA-TC-8A	1/2" CIA(2)-3-11
CIA-TC-9A	1/2" CIA(2)-3-12
CIA-TC-10A	1/2" CIA(2)-3-13
CIA-TC-11A	1/2" CIA(2)-3-14
CIA-TC-12A	1/2" CIA(2)-3-15
CIA-TC-13A	1/2" CIA(2)-3-16
CIA-TC-14A	1/2" CIA(2)-3-17
CIA-TC-15A	1/2" CIA(2)-3-18
CIA-TC-16A	1/2" CIA(2)-3-19
CIA-TC-17A	1/2" CIA(2)-3-20
CIA-TC-18A	1/2" CIA(2)-3-21
CIA-TC-19A	1/2" CIA(2)-3-22
CIA-TC-20A	1/2" CIA(2)-3-23
CIA-TC-21A	1/2" CIA(2)-3-24
CIA-TC-22A	1/2" CIA(2)-3-25
CIA-TC-23A	1/2" CIA(2)-3-26
CIA-TC-24A	1/2" CIA(2)-3-27
CIA-TC-25A	1/2" CIA(2)-3-28
CIA-TC-26A	1/2" CIA(2)-3-29
CIA-TC-27A	1/2" CIA(2)-3-30
CIA-TC-28A	1/2" CIA(2)-3-31
CIA-TC-29A	1/2" CIA(2)-3-32
CIA-TC-30A	1/2" CIA(2)-3-33
CIA-TC-31A	1/2" CIA(2)-3-34
CIA-TC-32A	1/2" CIA(2)-3-35

TABLE II

ACCUMULATOR IDENTIFICATION	A	B	C	D	E	F	G
HS-TC-6A	1/2" CIA(2)-25-13	2" CIA(2)-25-13	2" CIA(2)-25-13	2" CIA(2)-25-31	2" CIA(2)-25-42	2" CIA(2)-25-53	1/2" CIA(2)-2-13
HS-TC-6B	1/2" CIA(2)-25-14	2" CIA(2)-25-14	2" CIA(2)-25-14	2" CIA(2)-25-32	2" CIA(2)-25-43	2" CIA(2)-25-54	1/2" CIA(2)-2-14
HS-TC-6C	1/2" CIA(2)-25-15	2" CIA(2)-25-15	2" CIA(2)-25-15	2" CIA(2)-25-33	2" CIA(2)-25-44	2" CIA(2)-25-55	1/2" CIA(2)-2-15
HS-TC-6D	1/2" CIA(2)-25-16	2" CIA(2)-25-16	2" CIA(2)-25-16	2" CIA(2)-25-34	2" CIA(2)-25-45	2" CIA(2)-25-56	1/2" CIA(2)-2-16
HS-TC-6E	1/2" CIA(2)-25-17	2" CIA(2)-25-17	2" CIA(2)-25-17	2" CIA(2)-25-35	2" CIA(2)-25-46	2" CIA(2)-25-57	1/2" CIA(2)-2-17
HS-TC-6F	1/2" CIA(2)-25-18	2" CIA(2)-25-18	2" CIA(2)-25-18	2" CIA(2)-25-36	2" CIA(2)-25-47	2" CIA(2)-25-58	1/2" CIA(2)-2-18
HS-TC-6G	1/2" CIA(2)-25-19	2" CIA(2)-25-19	2" CIA(2)-25-19	2" CIA(2)-25-37	2" CIA(2)-25-48	2" CIA(2)-25-59	1/2" CIA(2)-2-19
HS-TC-6H	1/2" CIA(2)-25-20	2" CIA(2)-25-20	2" CIA(2)-25-20	2" CIA(2)-25-38	2" CIA(2)-25-49	2" CIA(2)-25-60	1/2" CIA(2)-2-20
HS-TC-6I	1/2" CIA(2)-25-21	2" CIA(2)-25-21	2" CIA(2)-25-21	2" CIA(2)-25-39	2" CIA(2)-25-50	2" CIA(2)-25-61	1/2" CIA(2)-2-21
HS-TC-6J	1/2" CIA(2)-25-22	2" CIA(2)-25-22	2" CIA(2)-25-22	2" CIA(2)-25-40	2" CIA(2)-25-51	2" CIA(2)-25-62	1/2" CIA(2)-2-22
HS-TC-6K	1/2" CIA(2)-25-23	2" CIA(2)-25-23	2" CIA(2)-25-23	2" CIA(2)-25-41	2" CIA(2)-25-52	2" CIA(2)-25-63	1/2" CIA(2)-2-23
HS-TC-6L	1/2" CIA(2)-25-24	2" CIA(2)-25-24	2" CIA(2)-25-24	2" CIA(2)-25-42	2" CIA(2)-25-53	2" CIA(2)-25-64	1/2" CIA(2)-2-24
HS-TC-6M	1/2" CIA(2)-25-25	2" CIA(2)-25-25	2" CIA(2)-25-25	2" CIA(2)-25-43	2" CIA(2)-25-54	2" CIA(2)-25-65	1/2" CIA(2)-2-25
HS-TC-6N	1/2" CIA(2)-25-26	2" CIA(2)-25-26	2" CIA(2)-25-26	2" CIA(2)-25-44	2" CIA(2)-25-55	2" CIA(2)-25-66	1/2" CIA(2)-2-26
HS-TC-6O	1/2" CIA(2)-25-27	2" CIA(2)-25-27	2" CIA(2)-25-27	2" CIA(2)-25-45	2" CIA(2)-25-56	2" CIA(2)-25-67	1/2" CIA(2)-2-27
HS-TC-6P	1/2" CIA(2)-25-28	2" CIA(2)-25-28	2" CIA(2)-25-28	2" CIA(2)-25-46	2" CIA(2)-25-57	2" CIA(2)-25-68	1/2" CIA(2)-2-28
HS-TC-6Q	1/2" CIA(2)-25-29	2" CIA(2)-25-29	2" CIA(2)-25-29	2" CIA(2)-25-47	2" CIA(2)-25-58	2" CIA(2)-25-69	1/2" CIA(2)-2-29
HS-TC-6R	1/2" CIA(2)-25-30	2" CIA(2)-25-30	2" CIA(2)-25-30	2" CIA(2)-25-48	2" CIA(2)-25-59	2" CIA(2)-25-70	1/2" CIA(2)-2-30
HS-TC-6S	1/2" CIA(2)-25-31	2" CIA(2)-25-31	2" CIA(2)-25-31	2" CIA(2)-25-49	2" CIA(2)-25-60		
HS-TC-6T	1/2" CIA(2)-25-32	2" CIA(2)-25-32	2" CIA(2)-25-32	2" CIA(2)-25-50			
HS-TC-6U	1/2" CIA(2)-25-33	2" CIA(2)-25-33	2" CIA(2)-25-33	2" CIA(2)-25-51			
HS-TC-6V	1/2" CIA(2)-25-34	2" CIA(2)-25-34	2" CIA(2)-25-34	2" CIA(2)-25-52			
HS-TC-6W	1/2" CIA(2)-25-35	2" CIA(2)-25-35	2" CIA(2)-25-35	2" CIA(2)-25-53			
HS-TC-6X	1/2" CIA(2)-25-36	2" CIA(2)-25-36	2" CIA(2)-25-36	2" CIA(2)-25-54			
HS-TC-6Y	1/2" CIA(2)-25-37	2" CIA(2)-25-37	2" CIA(2)-25-37	2" CIA(2)-25-55			
HS-TC-6Z	1/2" CIA(2)-25-38	2" CIA(2)-25-38	2" CIA(2)-25-38	2" CIA(2)-25-56			
HS-TC-7A	1/2" CIA(2)-25-39	2" CIA(2)-25-39	2" CIA(2)-25-39	2" CIA(2)-25-57			
HS-TC-7B	1/2" CIA(2)-25-40	2" CIA(2)-25-40	2" CIA(2)-25-40	2" CIA(2)-25-58			
HS-TC-7C	1/2" CIA(2)-25-41	2" CIA(2)-25-41	2" CIA(2)-25-41	2" CIA(2)-25-59			
HS-TC-7D	1/2" CIA(2)-25-42	2" CIA(2)-25-42	2" CIA(2)-25-42	2" CIA(2)-25-60			
HS-TC-7E	1/2" CIA(2)-25-43	2" CIA(2)-25-43	2" CIA(2)-25-43	2" CIA(2)-25-61			
HS-TC-7F	1/2" CIA(2)-25-44	2" CIA(2)-25-44	2" CIA(2)-25-44	2" CIA(2)-25-62			
HS-TC-7G	1/2" CIA(2)-25-45	2" CIA(2)-25-45	2" CIA(2)-25-45	2" CIA(2)-25-63			
HS-TC-7H	1/2" CIA(2)-25-46	2" CIA(2)-25-46	2" CIA(2)-25-46	2" CIA(2)-25-64			
HS-TC-7I	1/2" CIA(2)-25-47	2" CIA(2)-25-47	2" CIA(2)-25-47	2" CIA(2)-25-65			
HS-TC-7J	1/2" CIA(2)-25-48	2" CIA(2)-25-48	2" CIA(2)-25-48	2" CIA(2)-25-66			
HS-TC-7K	1/2" CIA(2)-25-49	2" CIA(2)-25-49	2" CIA(2)-25-49	2" CIA(2)-25-67			
HS-TC-7L	1/2" CIA(2)-25-50	2" CIA(2)-25-50	2" CIA(2)-25-50	2" CIA(2)-25-68			
HS-TC-7M	1/2" CIA(2)-25-51	2" CIA(2)-25-51	2" CIA(2)-25-51	2" CIA(2)-25-69			
HS-TC-7N	1/2" CIA(2)-25-52	2" CIA(2)-25-52	2" CIA(2)-25-52	2" CIA(2)-25-70			
HS-TC-7O	1/2" CIA(2)-25-53	2" CIA(2)-25-53	2" CIA(2)-25-53				
HS-TC-7P	1/2" CIA(2)-25-54	2" CIA(2)-25-54	2" CIA(2)-25-54				
HS-TC-7Q	1/2" CIA(2)-25-55	2" CIA(2)-25-55	2" CIA(2)-25-55				
HS-TC-7R	1/2" CIA(2)-25-56	2" CIA(2)-25-56	2" CIA(2)-25-56				
HS-TC-7S	1/2" CIA(2)-25-57	2" CIA(2)-25-57	2" CIA(2)-25-57				
HS-TC-7T	1/2" CIA(2)-25-58	2" CIA(2)-25-58	2" CIA(2)-25-58				
HS-TC-7U	1/2" CIA(2)-25-59	2" CIA(2)-25-59	2" CIA(2)-25-59				
HS-TC-7V	1/2" CIA(2)-25-60	2" CIA(2)-25-60	2" CIA(2)-25-60				
HS-TC-7W	1/2" CIA(2)-25-61	2" CIA(2)-25-61	2" CIA(2)-25-61				
HS-TC-7X	1/2" CIA(2)-25-62	2" CIA(2)-25-62	2" CIA(2)-25-62				
HS-TC-7Y	1/2" CIA(2)-25-63	2" CIA(2)-25-63	2" CIA(2)-25-63				
HS-TC-7Z	1/2" CIA(2)-25-64	2" CIA(2)-25-64	2" CIA(2)-25-64				
HS-TC-8A	1/2" CIA(2)-25-65	2" CIA(2)-25-65	2" CIA(2)-25-65				
HS-TC-8B	1/2" CIA(2)-25-66	2" CIA(2)-25-66	2" CIA(2)-25-66				
HS-TC-8C	1/2" CIA(2)-25-67	2" CIA(2)-25-67	2" CIA(2)-25-67				
HS-TC-8D	1/2" CIA(2)-25-68	2" CIA(2)-25-68	2" CIA(2)-25-68				
HS-TC-8E	1/2" CIA(2)-25-69	2" CIA(2)-25-69	2" CIA(2)-25-69				
HS-TC-8F	1/2" CIA(2)-25-70	2" CIA(2)-25-70	2" CIA(2)-25-70				



INFORMATION COPY

8903100450
Control # 8908030016
Date 7/28/89
REGULATORY DOCKET # 89-03100450

FSAR FIG NO. 9.3-2B
FSAR FIG NO. 3.2-21B

WASHINGTON PUBLIC POWER SUPPLY SYSTEM		TITLE	
SHEET	DATE	TITLE	
2	8-25-88	FLOW DIAGRAM	
DESIGN: [Signature]		CONTAINMENT INSTRUMENT AIR SYSTEM	
CHECKED: [Signature]		DRAWING # HSS-1	
DRAWN: [Signature]		SCALE: N/A REV: 0 SHEET 2 OF 2	

Figure 4-2 Containment Instrument Air System, Sheet 2