

ATTACHMENT

1. The following changes represent only title changes. No deletion of support to WNP-2 is represented in these changes:
  - Industrial Safety Supervisor to Industrial Safety and Fire Protection Manager
  - Reactor Engineering Supervisor to Plant Engineering Supervisor (Reactor Systems)
  - Plant Engineering Supervisor to Plant Engineering Supervisor (Control Systems)
  - Plant Engineering Supervisor to Plant Engineering Supervisor (Mechanical Systems)
  - Health Physics Chemistry Support Supervisor to Health Physics Support Supervisor (see 2. below)
2. The following changes are additions to the organization chart reflecting additional management support. No deletion of support to WNP-2 is represented in these changes:
  - Chemistry Support Supervisor - Assumes chemistry responsibilities previously assigned to the Health Physics Chemistry Support Supervisor
  - Assistant Operations Manager - Assists the Operations Manager as necessary. There is no deletion of responsibility with this change.
  - Technical Training Coordinators - Replaces a single Technical Training Coordinator previously reporting to the Plant Manager. This change allows each principle Manager (Technical, Health Physics/Chemistry, Operations and Maintenance) to closer control the technical training program for his department. The principle Manager can more easily identify the needs of his department and with the department Technical Training Coordinator tailor a program to fill those needs.
  - Plant Engineering Supervisor (Electrical Systems) - Represents a separation of responsibilities previously held by one supervisor for both control systems and electrical systems.

8511130347 851106  
PDR ADDCK 05000397  
P PDR



ATTACHMENT (Contd.)

3. The following positions have been moved to or assumed by other management functions within the Supply System.

- Procurement Manager
  - Formerly reporting to the Maintenance Manager, this position now reports directly to the Manager, Operations Contracts and Materials who in turn is responsible to the Assistant Managing Director for Operations in a matrixed position. No deletion of responsibility or support to the plant is represented in this change.
  
- Planning/Scheduling
  - Formerly reporting to the Maintenance Manager, the major responsibilities of this position have been assumed by the Planning & Scheduling Supervisor reporting directly to the Plant Manager.

The attached organization charts are revised to more clearly show the use of the Technical Training Coordinators.



WHIP-2  
PLANT  
MANAGER  
ASSISTANT  
PLANT  
MANAGER

NUCLEAR SAFETY  
ASSURANCE  
MANAGER

PLANT  
SECURITY  
SUPERVISOR

~~TECHNICAL  
TRAINING  
COORDINATOR~~

SECURITY  
FORCES

PLANT QUALITY  
ASSURANCE  
MANAGER

INDUSTRIAL  
SAFETY  
SUPERVISOR

Industrial Safety and  
Fire Protection Manager

Technical Training  
Coordinator

TECHNICAL  
MANAGER

HP/CHEMISTRY  
MANAGER

ADMINISTRATIVE  
MANAGER

OPERATIONS  
MANAGER

MAINTENANCE  
MANAGER

PLANNING &  
SCHEDULING  
SUPERVISOR

Plant  
ENGINEERING  
SUPERVISOR  
(Reactor Systems)

Plant  
ENGINEERING  
SUPERVISOR  
(Control Systems)

Plant  
ENGINEERING  
SUPERVISOR  
(Mechanical Systems)

Plant  
ENGINEERING  
SUPERVISOR  
(Electrical Systems)

HEALTH PHYSICS &  
CHEMISTRY  
SUPPORT  
SUPERVISOR

HP  
SUPERVISOR

CHEMISTRY  
SUPERVISOR

Technical Training  
Coordinator

Chemistry  
Support  
Supervisor

Assistant  
Operations  
Manager  
(SRO)

PROCUREMENT  
MANAGER

Technical Training  
Coordinator

MECHANICAL  
SUPERVISOR

ELECTRICAL  
SUPERVISOR

INSTRUMENT  
SUPERVISOR

PLANNING  
SCHEDULER

MAINT. SERVICES  
SUPERVISOR

INC LICENSE  
REQUIRED

POSITION

(SRO)

ADMINISTRATIVE AND FUNCTIONAL REPORTING

LINE OF COMMUNICATION

FIG. 2-1a  
UNIT ORGANIZATION



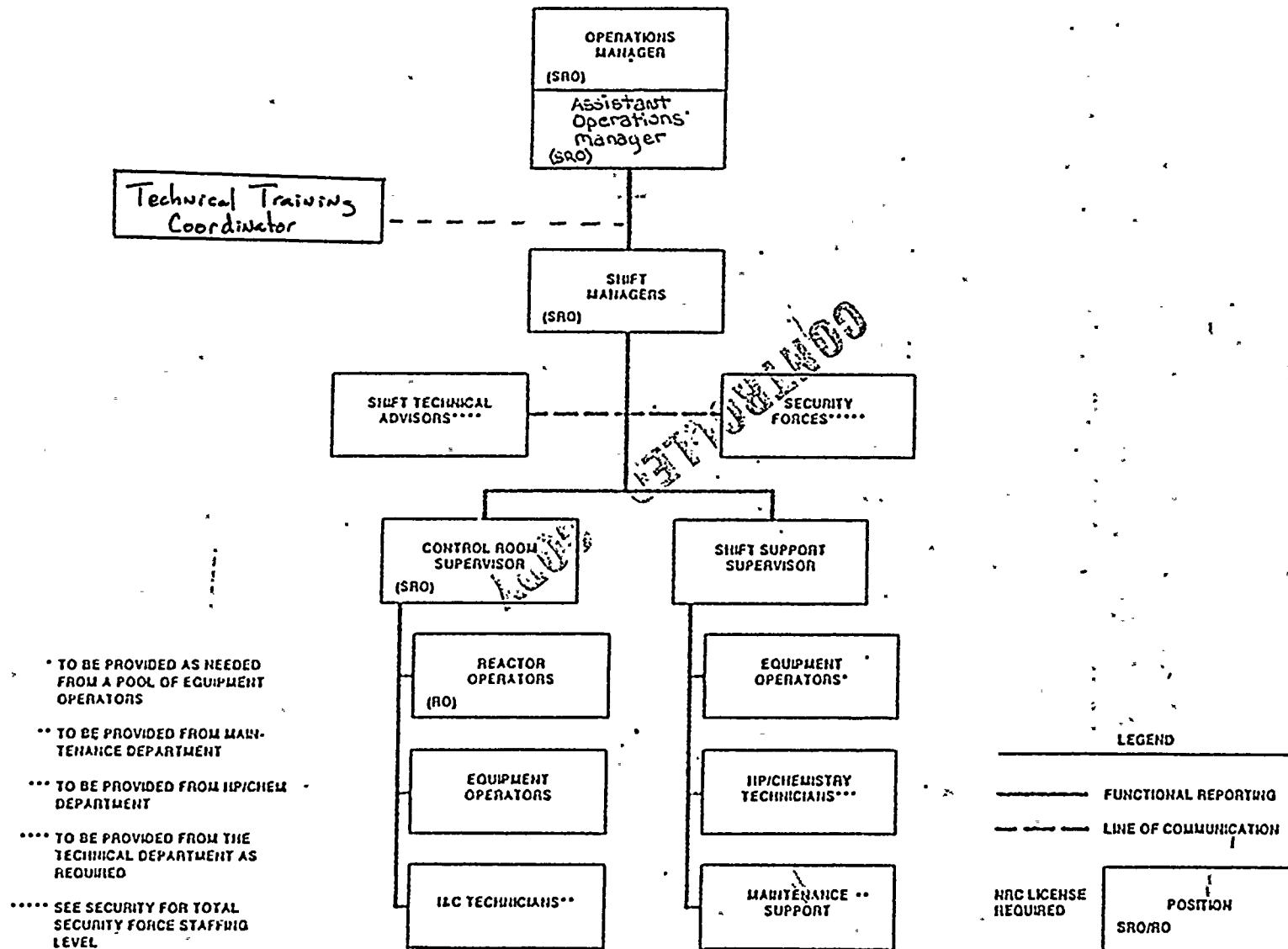


FIGURE 6.2.2-1b  
UNIT ORGANIZATION — OPERATIONS DEPARTMENT

