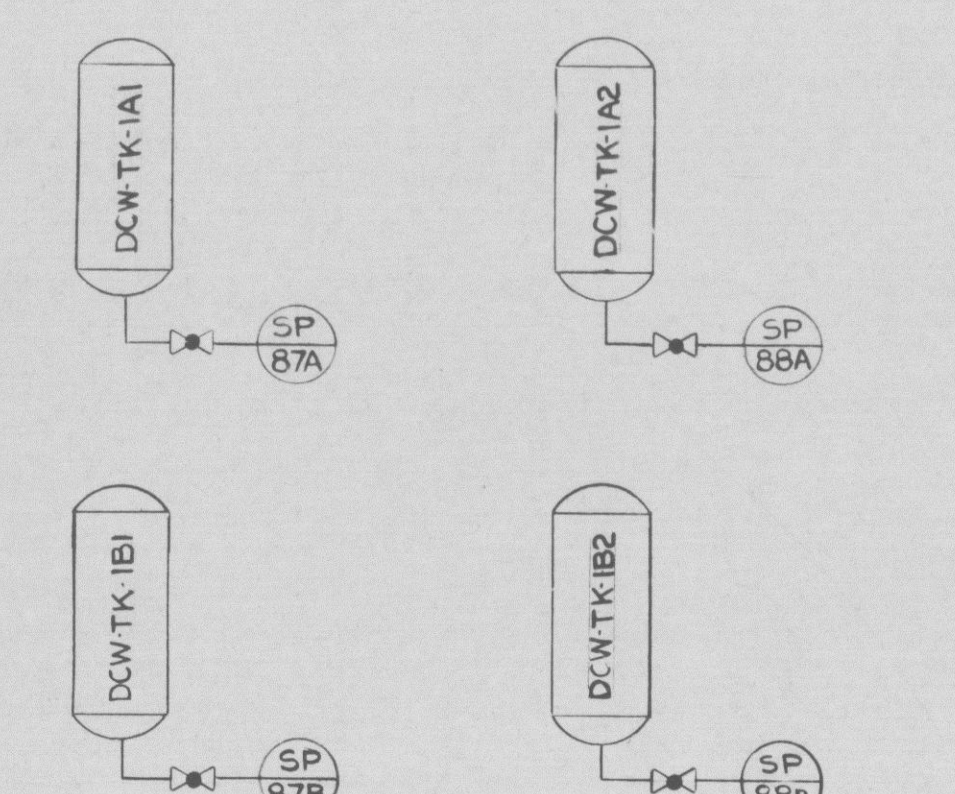
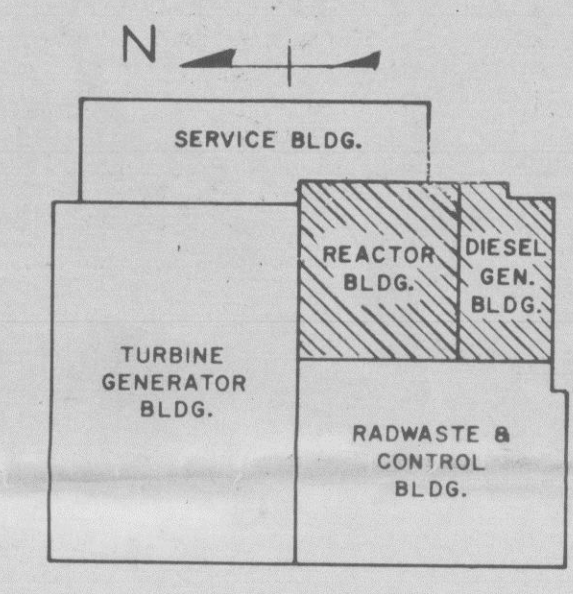


ENLARGED PLAN OF REACTOR BUILDING
SHOWING LOCATION OF SAMPLE RACK SR-6
AND FUME HOOD SR-7.



EXPANSION TANKS
AT DIESEL ENGINES

- NOTES:
1. FOR GENERAL NOTES & REFERENCE DRAWINGS SEE M-607 SHEET 1 OF 3.
 2. PIPING & TUBING WITHIN THE REACTOR BLDG. SAMPLE ROOM TO BE QUALITY CLASS II, SEISMIC CATEGORY I. FOR SAMPLE RACK SR-6, FUME HOOD SR-7 AND TSW LINES TO BE QUALITY CLASS I, SEISMIC CATEGORY I. EXCEPT AS NOTED ON M-607, INSTRUMENT CONNECTION DIAGRAMS.



KEY PLAN

PRO
APERTURE
CARD

DESIGN CONTROL FOR START-UP SYSTEM(S)
TRANSFERRED TO WPPSS. ALL FUTURE CHANGES TO THIS (THESE) SYSTEM(S) SHALL BE INITIATED AND APPROVED BY THE SUPPLY SYSTEM. ALL REVISIONS TO THIS DRAWING REQUIRE APPROVAL OF THE SUPPLY SYSTEM AND THE ARCHITECT / ENGINEER.

BURNS AND ROE, INC. ENGINEERS AND CONSTRUCTORS ORADELL, N. J. HEMPSTEAD, N. Y. LOS ANGELES, CALIF.	
FLOW DIAGRAM STEAM AND LIQUID SAMPLING REACTOR BUILDING	
WASHINGTON PUBLIC POWER SUPPLY SYSTEM HANFORD NO. 2	
ENGINEERING REVIEW	SCALE: NONE
DIVISION: NUCLEAR	ELECT. STRUCT. INSTR.
ENGR: J.B. AUC.	DRWN: JMD
DATE: 11/11/75	CHKD: LENZ
APPROVED FOR CONSTRUCTION	STATUS: BIDDING ONLY
FOR CHIEF NUCLEAR ENGINEER	REVISIONS:
CLIENT APPROVAL	1. CONTRACT 220: ADDED EXPANSION TANKS (ZONE G-2). REVISED VALVES & ADDED VALVE N-5, PSR-V-19A, 19B & 20 (ZONES F-14, J-10 & D-4) PER FCN 3559
	2. CONTRACT 220: ADDED COOLING WATER FOR ANALYSES & RAD. MONITORS (ZONES B-C) (14 & 15) ADDITION TO NOTE 2 PER FCN 3424

REV	REVISION	DATE	DRWN	CHKD	APPROVED	REV	REVISION	DATE	DRWN	CHKD	APPROVED	REV	REVISION	DATE	DRWN	CHKD	APPROVED
1	S.U. SYSTEMS TRANSFERRED TO SUPPLY SYSTEM PER W.O. 4300, MEMO ENR-83-1528	7/15/75	DRJ	WPP	WPP	5	PER TASK 3300: ADDED PED-220-I-0007	8/4/79	WJS	WPP	WPP	2	DELETED LINE NUMBER 24" RHR(S)-2 (ZONES H-4 & H-14) PER FCN 3366	9/9/79	J.F.	WPP	WPP
2	S.U. SYSTEMS TRANSFERRED TO SUPPLY SYSTEM PER W.O. 4300, MEMO ENR-83-1528	7/15/75	DRJ	WPP	WPP	6	PER TASK 3300: ADDED PED-220-I-0380 (U-10)	11/20/80	KAD	WPP	WPP	3	CONTRACT 220: DELETED COOLING WATER SUPPLY & RETURN FROM RAD. MONITOR SR-20 & 21 (B-12, B-14) PER FCN 4410	11/20/80	J.F.	WPP	WPP
						7	PER TASK 3040: PED-220-I-584 (H-1-2) 215-M-A364 (F-14-15, H-U-10)	11-48	B.E.	WPP	WPP	4	CONTRACT 220: ADDED SPEC BREAKS AND SWG CONTINUATION NOTING ZONES A-B & A-3 PER FCN 4378	11/20/80	SN	WPP	WPP
												5	FCN 2006: PED-220-I-5007 (D-17-15) (C-15) (5/4/80)	11/20/80	PL	WPP	WPP