

NOTES (CONTINUED)

19. ALL ITEMS IN CROSSHATCHED AREA ARE PART OF THE RHR STEAM CONDENSING MODE WHICH HAS BEEN DEACTIVATED. THE PIPING, VALVES & INSTRUMENTATION AS SHOWN ON THIS DIAGRAM ARE INSTALLED. MOTOR OPERATED VALVES THAT HAVE BEEN DE-ENERGIZED AND LOCKED CLOSED ARE: RHR-V-52A-B, RHR-V-10A-B, RHR-V-20A-B, RHR-V-27A-B, RHR-V-12A-B AND RHR-V-12S-A-B. (REF. PED 215-M-4467)

NOTES:

- ALL PRESSURE & FLOW INSTRUMENT ROOT VALVES NOT LABELLED WILL BE 3/4" GLOBE VALVES, UNLESS SPECIFICALLY NOTED OTHERWISE.
- ALL ITEMS MARKED * ARE FURNISHED WITH ASSOCIATED EQUIPMENT.
- PIPING, VALVES & ASSOC. COMPONENTS ON THIS DWG. SHALL BE CLASSIFIED AS FOLLOWS EXCEPT AS STATED IN NOTES 15 & 17 (BREAK POINTS ARE INDICATED ON FLOW DIAGRAM):
 - PIPING & VALVE OUT THROUGH OUTERMOST REAC. ISOL. VALVES SEIS. CL. I, QUAL. CL. I CODE GRP. A.
 - PIPING & VALVES BEYOND OUTERMOST REAC. ISOL. VALVES EXCEPT THOSE LINES DESIGNATED AS 3/4" RHR(50)-2, SEIS. CAT. I, QUAL. CL. I, CODE GRP. B.
 - INST. AIR LINES & LEAK-OFF PIPING INSIDE CONT. ISOL. VLV.; SEIS. CAT. I, QUAL. CL. I, CODE GRP. B.
 - INST. AIR LINES OUTSIDE CONTAINMENT ISOL. VLV. & SEIS. CL. I, QUAL. CL. I, CODE GRP. D.
 - LEAK-OFF PIPING BEYOND LEAK-OFF ISOL. VLV. & THE LINES DESIGNATED AS 3/4" RHR(50)-2, SEIS. CAT. I, QUAL. CL. I, CODE GRP. D.
 - PIPING SUBSYSTEMS: EDR(20)-1 & FDR(43) SEIS. CAT. I, QUAL. CL. I, CODE GRP. D.
 - EXCEPT AS NOTED ON M619 INSTR. CONN. SEE NOTE 12 CONTRACT 215, SECT. 155, TABLE 2 NOTES.
- CODE BREAK DEFINITIONS FOR THERMOWELLS ARE SHOWN ON M610; INSTALLATION OF THERMOWELLS AND SAMPLE PROBES.
- DELETED
- ALL PIPING SYSTEMS IDENTIFIED BY THE PREFIX "PI" SHALL BE SUPPLIED & INSTALLED BY CONTRACT #220.
- THIS EQUIPMENT IS NORMALLY CONTROLLED FROM THE MAIN CONTROL ROOM. IF THE MAIN CONTROL ROOM MUST BE VACATED THIS CONTROL POINT MAY BE ISOLATED & CONTROL TRANSFERRED TO THE REMOTE SHUTDOWN PANEL 061-POOI.
- DELETED
- ALLOW ADEQUATE PIPING SURFACE AREA FOR COOLING OF PUMP RHR-P-3.
- ALL TEST CONNECTION PIPING WILL ASSUME RATING OF SOURCE PIPE AND BE IDENTIFIED AS 3/4" RHR(55)-1.
- EXCESS FLOW CHECK VALVES SHALL BE TAGGED AS FOLLOWS: P1-EFC-X*(#)PENETRATION (N).
- CONTAINMENT INSTRUMENTATION ROOT VALVES SHALL BE TAGGED AS FOLLOWS: P1-VX*(#)PENETRATION (N) EXCEPT WHERE NOTED ON FACE OF DRAWING.
- EQUIPMENT AND INSTRUMENTS ARE PREFIXED WITH RHR UNLESS OTHERWISE NOTED.
- SEE COMPUTER I/O LIST FOR MOTOR WINDING AND BEARING TEMPERATURE ELEMENTS AND POINT NUMBERS.
- PIPING VALVES & ASSOCIATED COMPONENTS ON THIS DWG. SHALL BE CLASSIFIED AS FOLLOWS: (BREAK POINTS ARE INDICATED ON THIS DIAGRAM)
 - SEISMIC CATEGORY I QUALITY CLASS I CODE GROUP D.
 - STRAINERS SHALL HAVE ALL FABRICATION & MATERIALS TO APPLICABLE REQUIREMENTS OF ASME III-2 EXCEPT CODE STAMP IS NOT REQUIRED AND PERFORATED PLATE MAY BE ASTM MATERIAL AND COMPLIANCE WITH NA-3700 IS NOT MANDATORY. FURNISHED & INSTALLED BY CONTR. 213A.
- THESE INSTRUMENTS ARE LOCATED ON COLD SHUTDOWN PANEL.
- ALL PIPING DOWNSTREAM OF THE LAST ISOLATION VALVE AND OPEN TO THE ATMOSPHERE WITH THE SUBSYSTEM DESIGNATION "SYSTEM (50) THRU (59)" SHALL BE CLASSIFIED AS CODE GROUP D WITH QUALITY CLASS AND SEISMIC CATEGORY PROVIDED BY THE APPLICABLE NOTES ON THIS DRAWING.
- ALL INSTRUMENT LINES ARE DESIGNATED BY CODE AND LINE NUMBER.
 - EXAMPLE: LINES ORIGINATING OUTSIDE CONTAINMENT 1/2" PI (1)-ST-(H22-PO2)-A10 CODE DESIGNATION LINE NUMBER
 - EXAMPLE: LINES ORIGINATING INSIDE CONTAINMENT 1/2" PI (1)-AS-X106 CODE DESIGNATION LINE NUMBER
 - EXAMPLE: CONTINUATION OF THE ABOVE LINE OUTSIDE CONTAINMENT IS DESIGNATED AS FOLLOWS, WITH LINE NUMBERS NOT SHOWN. 1/2" PI (1)-ST-X106-(H22-PO2)-A10 CODE DESIGNATION LINE NUMBER (CONTINUED ZONE J-5)

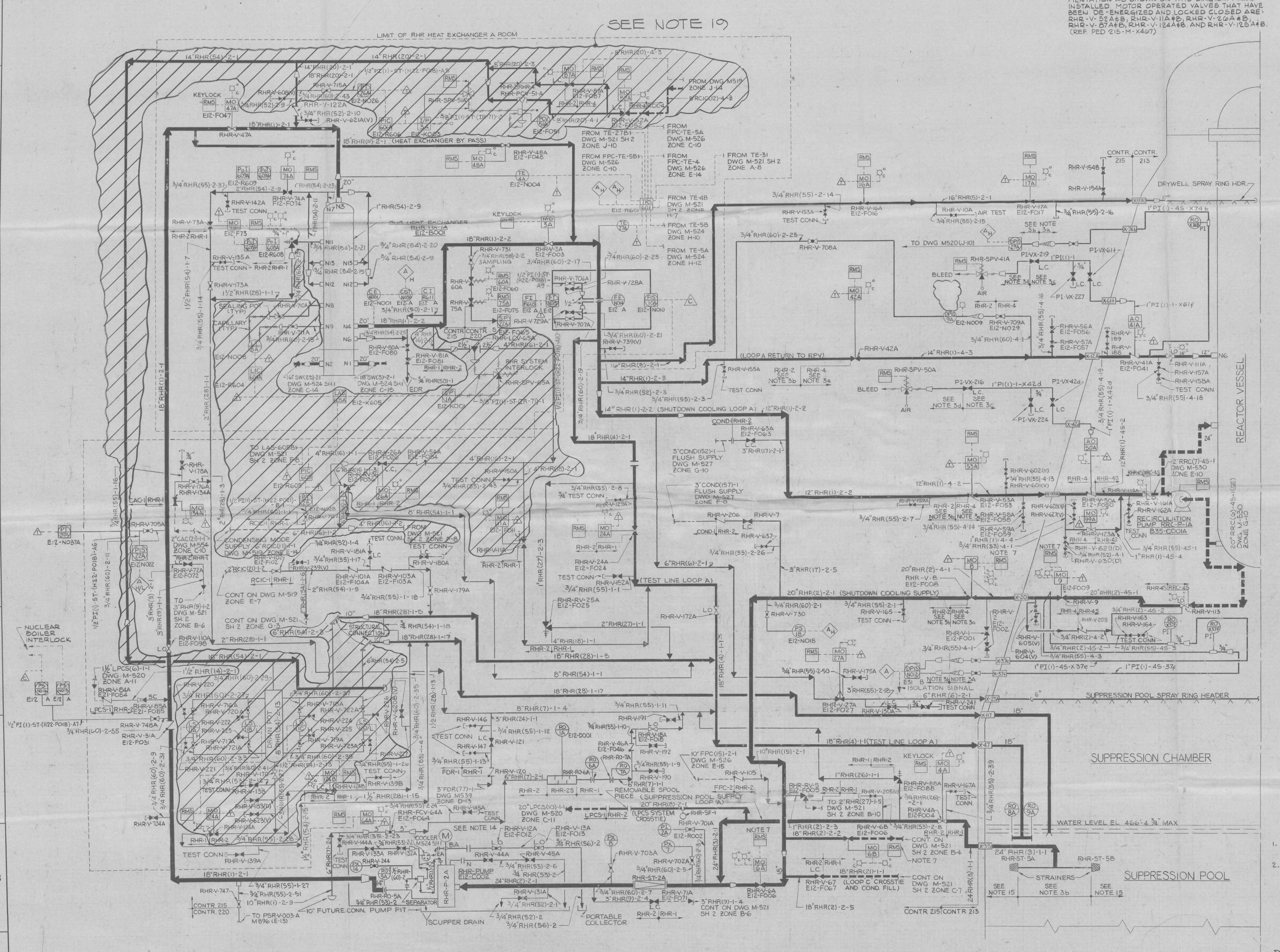
LEGEND

- ALL VALVES SUFFIXED WITH A (V) EQUAL 3/4" VENT VALVE
- ALL VALVES SUFFIXED WITH A (D) EQUAL 3/4" DRAIN VALVE

PRC
APERTURE
CARD

BURNS AND ROE, INC.
ENGINEERS AND ARCHITECTS
ORADELL, N.J. HEMPSTEAD, N.Y. LOS ANGELES, CALIF.
FLOW DIAGRAM
RESIDUAL HEAT REMOVAL SYSTEM
SHEET 1
WASHINGTON PUBLIC POWER SUPPLY SYSTEM
HANFORD NO. 2

REVISION	DATE	BY	CHKD	APP'D	REVISION	DATE	BY	CHKD	APP'D
42	7-19-83	MH			39	7-19-83	MH		
43	7-19-83	MH			40	7-19-83	MH		
44	7-19-83	MH							



REVISION	DATE	BY	CHKD	APP'D	REVISION	DATE	BY	CHKD	APP'D
42	7-19-83	MH			39	7-19-83	MH		
43	7-19-83	MH			40	7-19-83	MH		
44	7-19-83	MH							