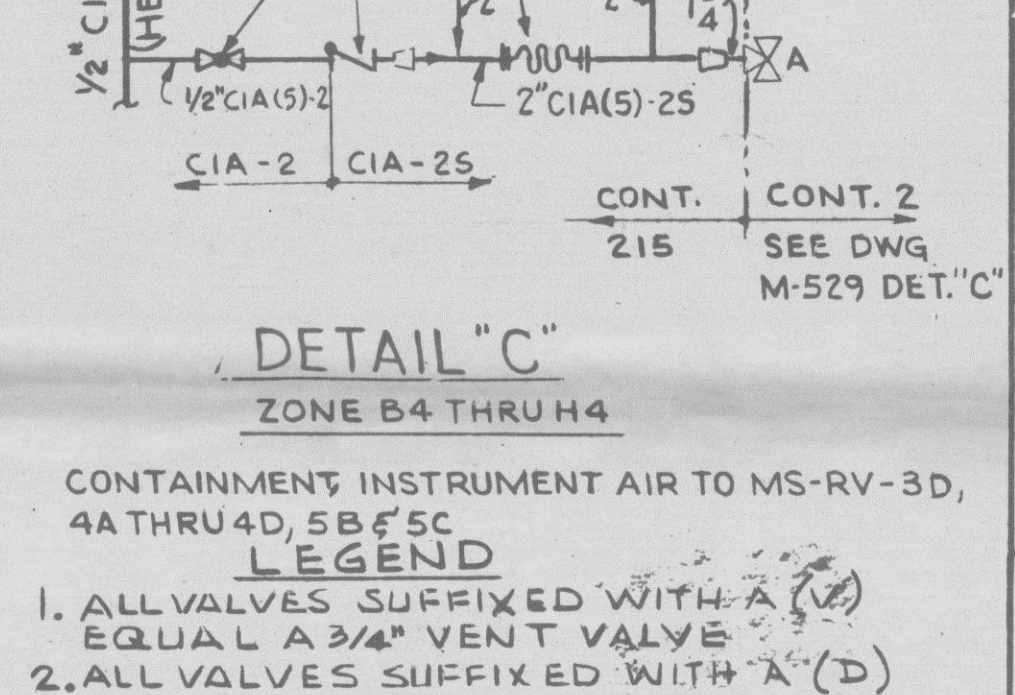
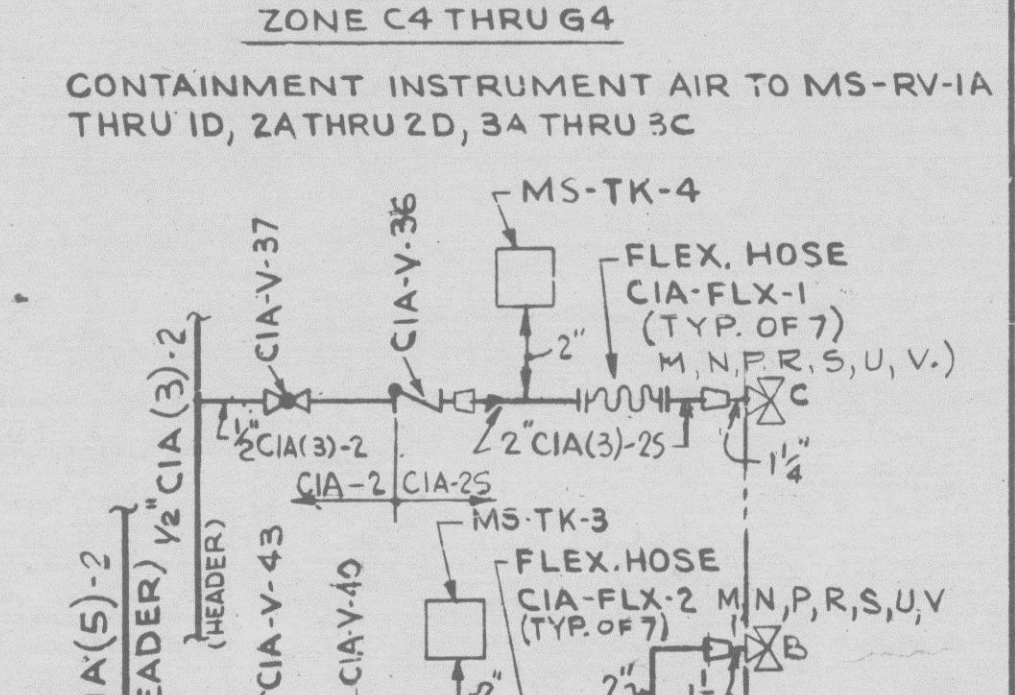
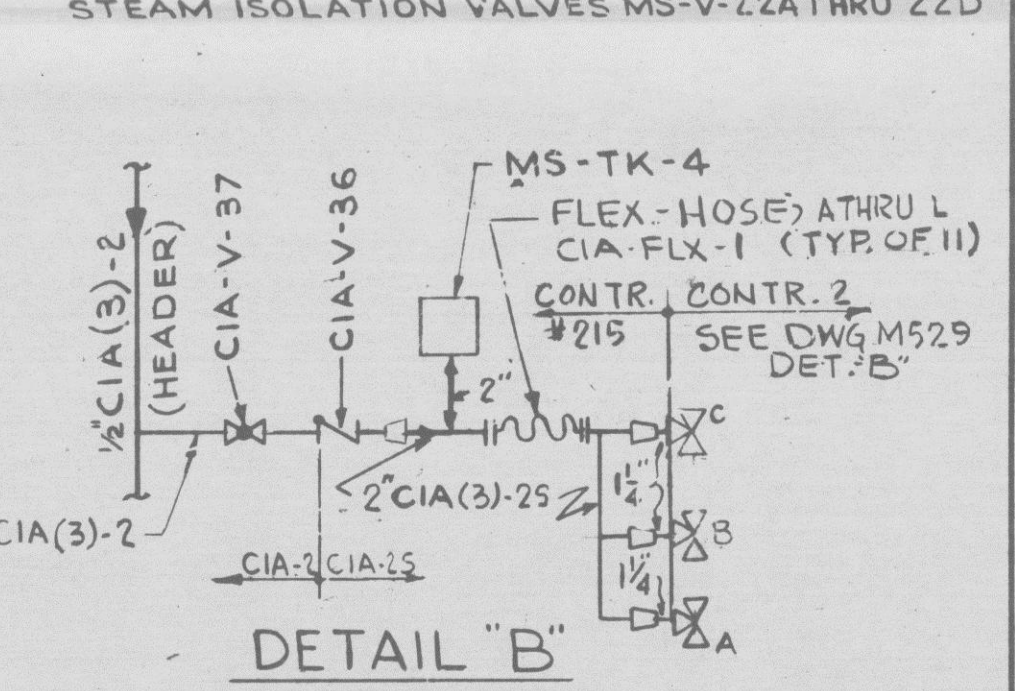
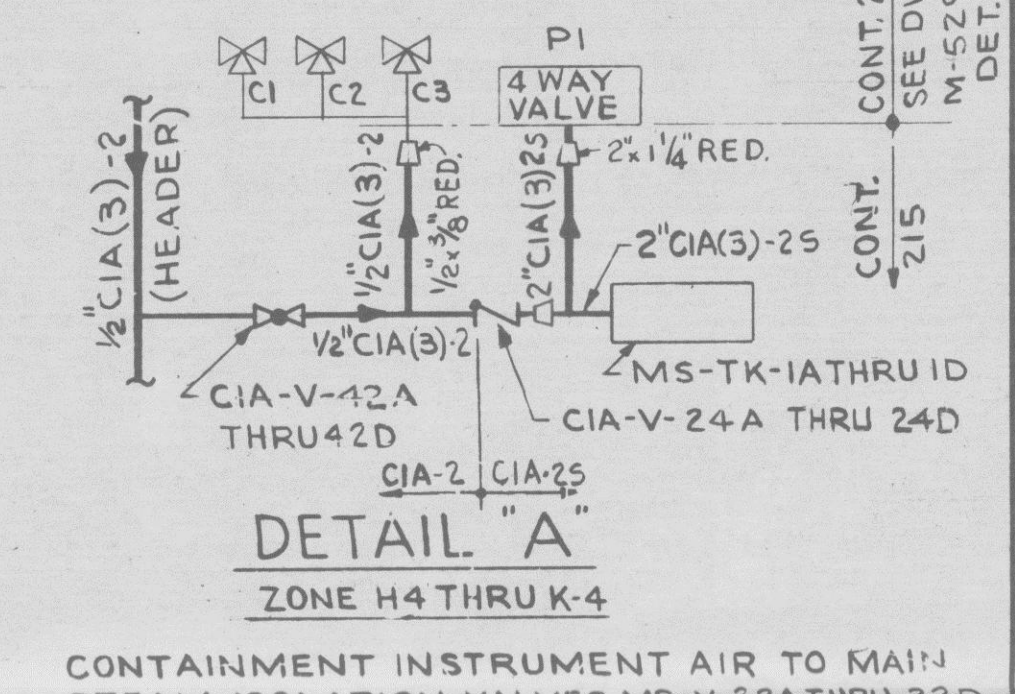


- NOTES:**
1. PIPING, VALVES AND ASSOCIATED COMPONENTS ON THIS DWG. SHALL BE CLASSIFIED AS FOLLOWS (BREAK POINTS ARE INDICATED ON THE FLOW DIAGRAM):  
a. WITHIN PRIMARY CONTAINMENT AND OUT THROUGH THE OUTERMOST ISOLATION VALVES: SEISMIC CATEGORY I QUALITY CLASS I CODE GROUP B  
b. PIPING BEYOND OUTERMOST ISOLATION VALVE EXCEPT CIA(5): SEISMIC CATEGORY II QUALITY CLASS II CODE GROUP D  
c. EQUIPMENT BEYOND OUTERMOST ISOLATION VALVE EXCEPT CIA(5): SEISMIC CATEGORY II QUALITY CLASS II CODE GROUP D  
d. CIA(5) BEYOND OUTERMOST ISOLATION VALVE EXCEPT NITROGEN BOTTLES AND ASSOCIATED EQUIPMENT: SEISMIC CATEGORY I QUALITY CLASS I CODE GROUP B  
e. NITROGEN BOTTLES AND ASSOCIATED EQUIPMENT AND CIA(6): SEISMIC CATEGORY I QUALITY CLASS I CODE GROUP B  
f. EXCEPT AS NOTED ON M-504, INSTR. CONTR. DIAGS. ALL ITEMS MARKED \* ARE FURNISHED WITH ASSOCIATED EQUIPMENT.  
g. VALVES ARE INCLUDED IN THE 'ISOLATION VALVE POSITION DISPLAY PANEL'.  
h. ALL INSTRUMENTS ON THIS DRAWING TO BE IDENTIFIED BY PREFIX 'CIA' UNLESS SPECIFICALLY NOTED OTHERWISE.  
i. ALL PRESSURE FLOW INSTRUMENT ROOT VALVES NOT LABELED WILL BE 3/8" GLOBE VALVES UNLESS SPECIFICALLY NOTED OTHERWISE.



**VOID** **FSAR FIG. NO. 3.2.2 (3.2-4)**

**BURNS AND ROE, INC.**  
ENGINEERS AND CONSTRUCTORS  
ORADELL, N. J. HEMPSTEAD, N. Y. LOS ANGELES, CALIF.

**FLOW DIAGRAM**  
CONTAINMENT INSTRUMENT AIR SYSTEM  
WASHINGTON PUBLIC POWER SUPPLY SYSTEM  
HANFORD No. 2

REVISION	DATE	BY	CHKD	APPROVED	REVISION	DATE	BY	CHKD	APPROVED
17	10/15/82	DRJ	JSJ	10/15/82	17	10/15/82	DRJ	JSJ	10/15/82

**FOR PREVIOUS REV. SEE PREVIOUS ISSUE**  
PER TASK 3040: PED 215-M-5512, V-215-M-5506 (J-B-10, E-10, W-215-M-4419, W-215-D-4708 (M-1010, B-215-M-412, D-1415) W-215-D-5577 (B-10, C-10, E-10, H-10, I-10, J-10, K-10, L-10, M-10, N-10, O-10, P-10, Q-10, R-10, S-10, T-10, U-10, V-10, W-10, X-10, Y-10, Z-10) 215-M-5522 (C-10, I-10) 215-M-5511 (D-10, H-10)

**W.O. 2808**  
**DWG. M 556**

INFORMATION ONLY ON HOLD