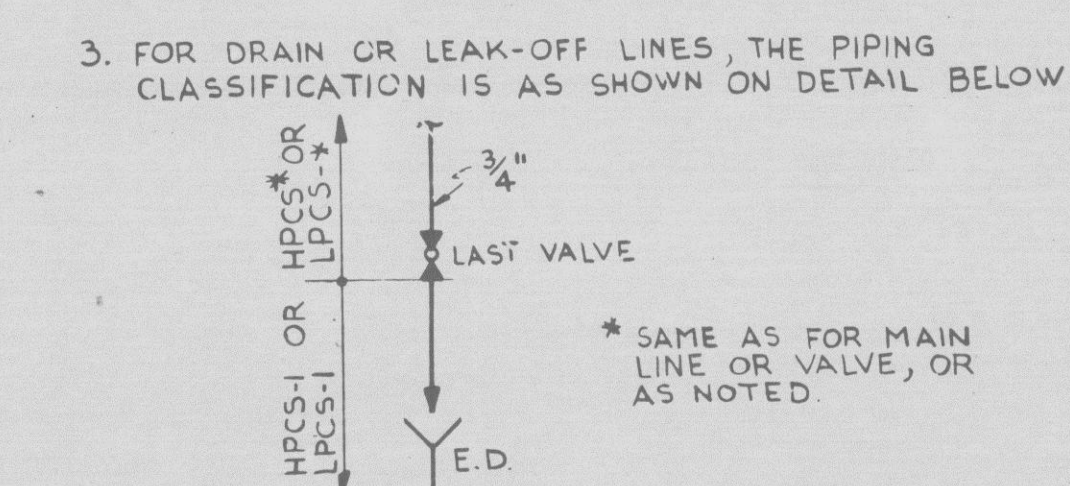


- NOTES:**
- ALL INSTRUMENT ROOT VALVES NOT LABELED WILL BE 3/4" GLOBE VALVES UNLESS SPECIFICALLY NOTED OTHERWISE.
 - PIPING VALVES AND ASSOCIATED COMPONENTS ON THIS DWG. SHALL BE CLASSIFIED AS FOLLOWS EXCEPT AS STATED IN NOTES 12 (B) (BREAK POINTS ARE INDICATED ON FLOW DIAGRAM):
 - a. PIPING AND VALVES OUT THROUGH OUTERMOST REACTOR ISOLATION VALVES:
 - SEISMIC CATEGORY I
 - QUALITY CLASS 1
 - CODE GROUP A
 - b. PIPING AND VALVES BEYOND OUTERMOST REACTOR ISOLATION VALVES, PLUS ALL INSTRUMENT LINES EXCEPT THE PUMP SEAL DRAIN LINES DESIGNATED AS 3/4" LPCS(52)-2 AND 3/4" HPCS(52)-4:
 - SEISMIC CATEGORY I
 - QUALITY CLASS 1
 - CODE GROUP B
 - c. INSTRUMENTATION AIR LINES AND LEAK-OFF PIPING INSIDE CONTAINMENT ISOLATION VALVE:
 - SEISMIC CATEGORY I
 - QUALITY CLASS 1
 - CODE GROUP
 - d. INSTRUMENTATION AIR LINES AND LEAK-OFF PIPING OUTSIDE CONTAINMENT ISOLATION VALVE, AND THE PUMP SEAL DRAIN LINES DESIGNATED AS 3/4" LPCS(52)-2 AND 3/4" HPCS(52)-4:
 - SEISMIC CATEGORY I
 - QUALITY CLASS 1
 - CODE GROUP
 - FOR DRAIN OR LEAK-OFF LINES, THE PIPING CLASSIFICATION IS AS SHOWN ON DETAIL BELOW



- ALL PIPING SYSTEMS IDENTIFIED BY THE PREFIX "PI" SHALL BE SUPPLIED AND INSTALLED BY CONTRACT # 220
- THESE VALVES WILL BE INCLUDED IN THE "ISOLATION VALVE POSITION DISPLAY PANEL"
- ALLOW ADEQUATE PIPING SURFACE AREA FOR COOLING OF PUMP LPCS-P-2
- EXCESS FLOW CHECK VALVES SHALL BE TAGGED AS FOLLOWS:
 - PI-EFC-X(PENETRATION NO)
- CONTAINMENT INSTRUMENTATION ROOT VALVES SHALL BE TAGGED AS FOLLOWS:
 - PI-V-X(PENETRATION NO) EXCEPT WHERE NOTED ON FACE OF DRAWING
- CONTAINMENT RESTRICTION ORIFICES SHALL BE TAGGED AS FOLLOWS:
 - PI-RO-X(PENETRATION NO)
- PIPING VALVES & ASSOCIATED COMPONENTS ON THIS DWG. SHALL BE CLASSIFIED AS FOLLOWS (BREAK POINTS ARE INDICATED ON THIS DIAGRAM):
 - SEISMIC CATEGORY I
 - QUALITY CLASS 1
 - CODE GROUP
- STRAINERS SHALL HAVE ALL FABRICATION & MATERIALS TO APPLICABLE REQUIREMENTS OF ASME III-2 EXCEPT CODE STAMP IS NOT REQUIRED. (PUMPED MATERIAL MAY BE ASTM MATERIAL AND COMPLIANCE WITH NPS-3700 IS NOT MANDATORY, FURNISHED AND INSTALLED BY CONTR. 213A)
 - EXCEPT AS NOTED ON M619, INSTRUMENT CONNECTION DIAGRAMS
- ALL PIPING DOWNSTREAM OF THE LAST ISOLATION VALVE AND OPEN TO THE ATMOSPHERE WITH THE SUBSYSTEM DESIGNATION "SYSTEM" (50) THRU (59) SHALL BE CLASSIFIED AS CODE GROUP D WITH QUALITY CLASS AND SEISMIC CATEGORY PROVIDED BY THE APPLICABLE NOTES ON THIS DRAWING.

LEGEND

- ALL VALVES SUFFIXED WITH A (V) EQUAL A 3/4" VENT VALVE.
- ALL VALVES SUFFIXED WITH A (D) EQUAL A 3/4" MAIN VALVE.

INFORMATION ONLY

FSAR FIG. NO. 3-2-7

BURNS AND ROE, INC.
ENGINEERS AND CONSTRUCTORS
ORADELL, N.J. HEMPSTEAD, N.Y. LOS ANGELES, CALIF.

FLOW DIAGRAM
HPCS AND LPCS SYSTEMS
REACTOR BUILDING

WASHINGTON PUBLIC POWER SUPPLY SYSTEM
HANFORD No. 2

REVISION	DATE	DRWN	CHKD	APPROVED	REV NO
24	PER TASK 3040: PED'S 215-M-A155 (H-2, H-12, E-11) W215-M-3209 (215-M-A422 (C-13), 215-D-A491 (E-4, F-6, G-7), 215-M-A383 (F-6, G-5, G-11, 215-M-A502 (D-1, 2), W215-M-A733 (C-4, C-6, C-12), W215-M-A314 (D-6, C-12))	2-8-81	MMH	21	21
25	PER TASK 3040: PED'S W215-M-514 (G-4, H-1, G-12) W215-M-A155 (C-4), W215-M-8271 (C-6, D-12, E-4), 215-M-5550 (B-1), W215-M-5553 (B-1), W215-M-5554 (C-12, C-13)	3-1-81	DRJ	22	22
	PER TASK 3040: PED'S 215-M-A556 (B-5), W215-M-4797 (D-7, D-11)	4-1-81	REP	23	23

W.O. 2808
DWG. M520