

8210040260 820928  
PDR ADDCK 05000397  
A PDR

# **CORPORATE ORGANIZATION & MANAGEMENT**

- **POWER GENERATION ORGANIZATION**

**W. C. BIBB**

**DIRECTOR, POWER GENERATION**

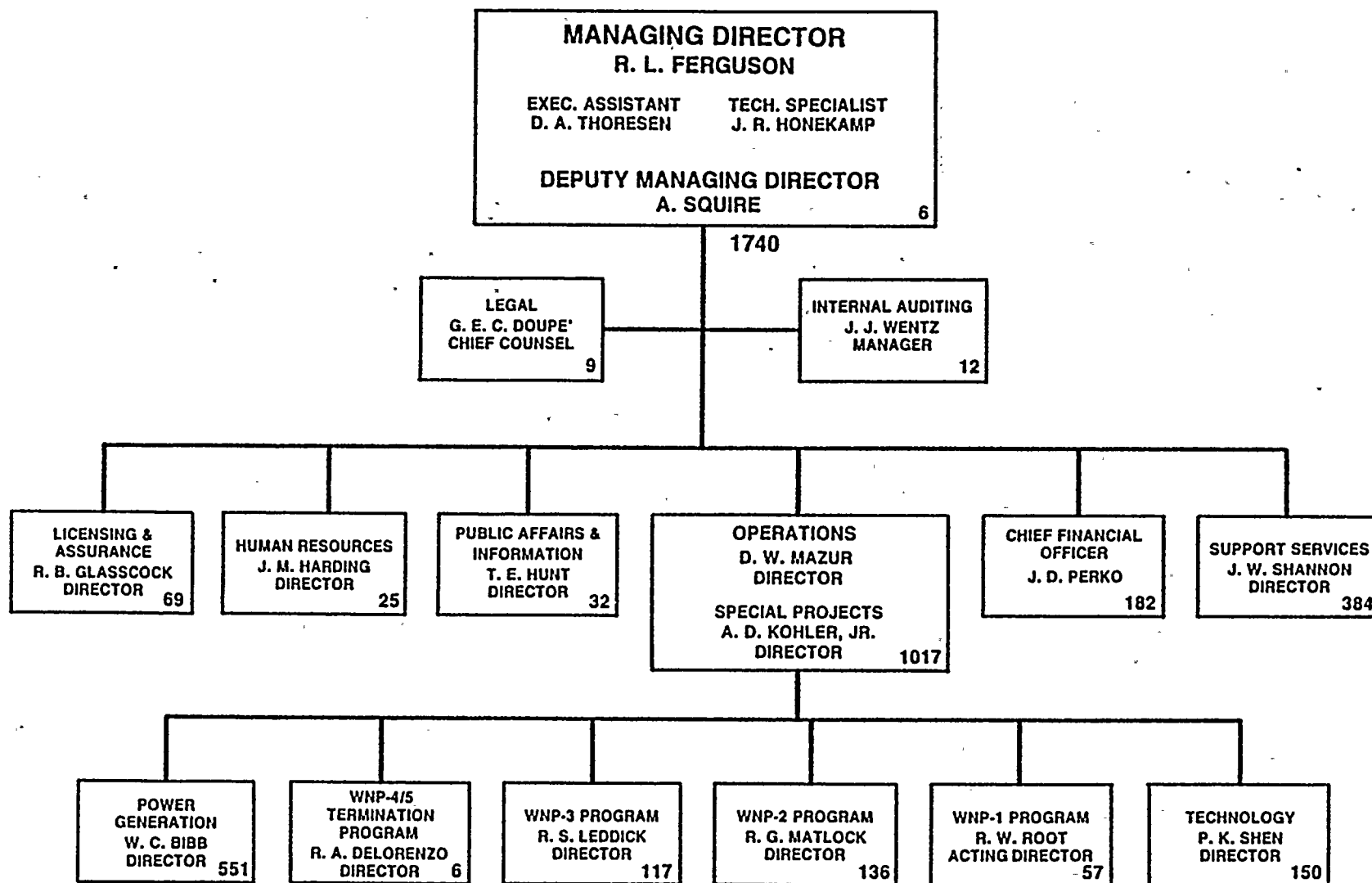
ATTACHMENT 1

## **WASHINGTON PUBLIC POWER SUPPLY SYSTEM MISSION**

- **MUNICIPAL CORPORATION CREATED TO BUILD AND OPERATE ELECTRICAL GENERATING FACILITIES FOR NORTHWEST UTILITIES**
- **NO MARKETING OR DISTRIBUTION RESPONSIBILITIES**
- **VIRTUALLY ALL NUCLEAR COMPANY**



## WASHINGTON PUBLIC POWER SUPPLY SYSTEM





# **ORGANIZATIONAL RESPONSIBILITIES**

## **MANAGING DIRECTOR**

**ESTABLISH POLICY AND DIRECTION FOR SAFE AND EFFICIENT MANAGEMENT OF ALL SUPPLY SYSTEM ACTIVITIES . . . ACCOUNTABLE TO BOARD OF DIRECTORS FOR SAFE AND SUCCESSFUL COMPLETION AND OPERATION OF SUPPLY SYSTEM ELECTRICAL GENERATING FACILITIES.**

## **DIRECTOR OF OPERATIONS**

**RESPONSIBLE AND ACCOUNTABLE TO THE MANAGING DIRECTOR FOR SAFE AND SUCCESSFUL CONSTRUCTION AND OPERATION OF SUPPLY SYSTEM GENERATING FACILITIES.**

## **DIRECTOR, SUPPORT SERVICES**

**PROVIDES ADMINISTRATIVE, SECURITY, HEALTH PHYSICS, INDUSTRIAL SAFETY, EMERGENCY PREPAREDNESS, FIRE PROTECTION AND TECHNICAL TRAINING SUPPORT SERVICES FOR THE SUPPLY SYSTEM PLANTS.**

## **DIRECTOR, LICENSING AND ASSURANCE**

**PROVIDES LICENSING SUPPORT, QUALITY ASSURANCE, AND NUCLEAR SAFETY ASSURANCE FOR SUPPLY SYSTEM NUCLEAR PLANTS.**

# **ORGANIZATIONAL RESPONSIBILITIES**

## **(continued)**

**DIRECTOR, POWER  
GENERATION**

**RESPONSIBLE AND ACCOUNTABLE TO THE DIRECTOR OF OPERATIONS FOR SAFE AND EFFICIENT OPERATION OF SUPPLY SYSTEM GENERATING PROJECTS.**

**WNP-2 PROGRAM DIRECTOR**

**RESPONSIBLE AND ACCOUNTABLE FOR THE SAFE AND SUCCESSFUL COMPLETION OF THE WNP-2 PROJECT . . . ACCOMPLISHED THROUGH THE MANAGEMENT AND DIRECTION OF A/E AND CM ORGANIZATIONS AND SUPPLY SYSTEM PERSONNEL.**

**DIRECTOR, TECHNOLOGY**

**PROVIDES FOR TECHNICAL SUPPORT OF PROJECT ACTIVITIES IN AREAS SUCH AS SYSTEMS ENGINEERING, GENERATION ENGINEERING, NUCLEAR ENGINEERING SERVICES, FUELS, ENVIRONMENTAL, AND TECHNICAL INFORMATION SYSTEMS . . . RESPONSIBLE FOR PLANT DESIGN AND DESIGN CONTROLS FOR OPERATIONAL PLANTS.**

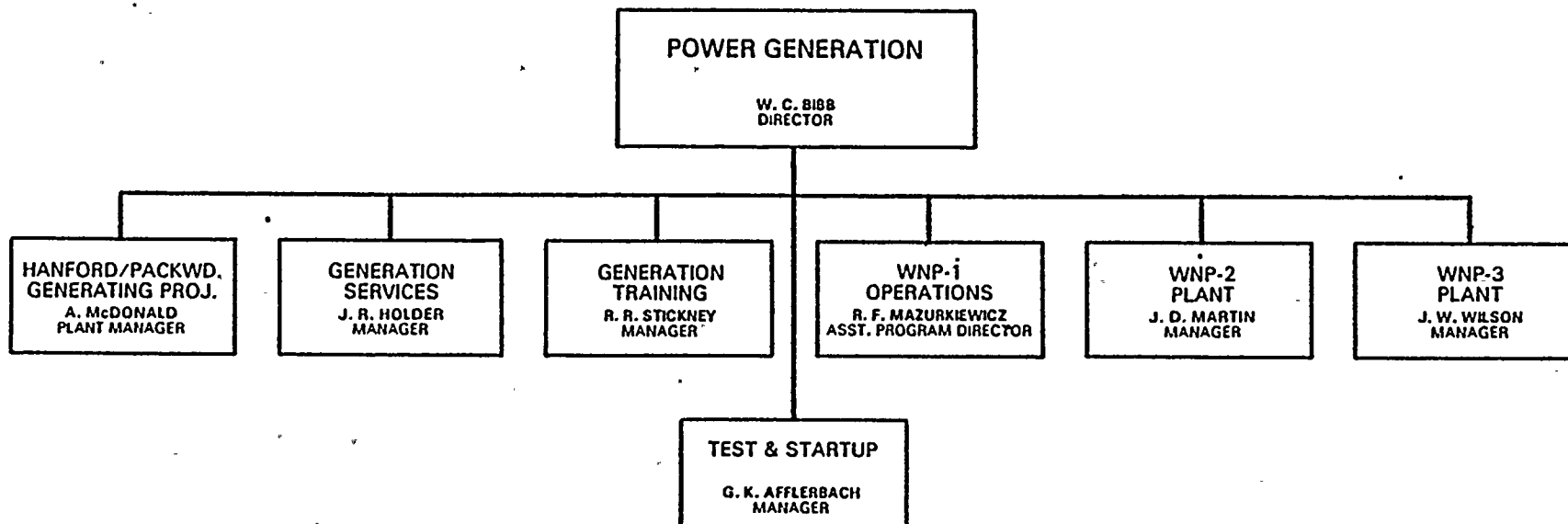




# NUCLEAR EXPERIENCE OF KEY MANAGEMENT OFFICIALS

Individual	Title	Total Years Nuclear Experience
Mr. R. L. Ferguson	Managing Director	20
Mr. A. Squire	Deputy Managing Director	30
Mr. D. W. Mazur	Director of Operations	19
Dr. R. G. Matlock	WNP-2 Program Director	21
Mr. C. S. Carlisle	WNP-2 Deputy Program Director	35
Mr. W. C. Bibb	Director, Power Generation	28
Mr. J. D. Martin	WNP-2 Plant Manager	22
Mr. J. R. Holder	Manager, Generation Services	11
Mr. R. R. Stickney	Manager, Generation Training	16
Dr. P. K. Shen	Director, Technology	15
Mr. J. W. Shannon	Director, Support Services	30
Mr. R. B. Glasscock	Director, Licensing and Assurance	24

# POWER GENERATION ORGANIZATION





# **PLANT SUPPORT FUNCTIONS**

## **SUPPORT SERVICES DIRECTORATE**

- **RADIOLOGICAL & CHEMISTRY SUPPORT SERVICES**
- **SECURITY**
- **EMERGENCY PREPAREDNESS PLANNING**
- **INDUSTRIAL SAFETY, INDUSTRIAL HYGIENE, FIRE PROTECTION**
- **ADMINISTRATIVE SERVICES AND RECORDS MANAGEMENT SUPPORT**

## **LICENSING AND ASSURANCE DIRECTORATE**

- **INDEPENDENT QA OVERVIEW**
- **QA POLICY AND GUIDANCE**
- **LICENSING COORDINATION AND NRC INTERFACE**
- **OPERATIONAL NUCLEAR SAFETY ASSURANCE**



# **PLANT SUPPORT FUNCTIONS (continued)**

## **CENTRAL SUPPORT FROM POWER GENERATION**

- **DEVELOPMENT OF OPERATING POLICY**
- **DEVELOPMENT OF TRAINING POLICIES**
- **ASSISTS WITH GENERAL TRAINING, SIMULATOR TRAINING,  
AND COLLEGE TECHNOLOGY/ACADEMIC PROGRAMS**
- **OPERATING EXPERIENCE PROGRAM/REVIEW (SEE-IN), NOMIS,  
PPICS, ETC.**
- **ADMINISTRATIVE SUPPORT**
- **LABOR SERVICES**
- **NDE—PROCEDURES, DATA ANALYSIS AND EVALUATION,  
TECHNIQUE METHODOLOGY, STANDARDS**
- **STANDARDS LABORATORY**

# **PLANT SUPPORT FUNCTIONS (continued)**

## **TECHNOLOGY DIRECTORATE**

- **SPECIAL TECHNICAL EXPERTISE**
  - **WATER CHEMISTRY AND MATERIALS, ETC.**
- **FUEL MANAGEMENT**
  - **INCLUDES PLANNING, PROCURING AND LICENSING RELOAD CORES, ENSURING FUEL AVAILABILITY**
- **ENVIRONMENTAL MONITORING**
- **REACTOR SAFETY AND CORE ANALYSIS**
- **ENGINEERED MODIFICATION, INCLUDING CONFIGURATION CONTROL**
  - **PLANT MANAGER AUTHORIZES WORK**
  - **ENGINEERING OBTAINS MODIFICATION DESIGN IN ACCORDANCE WITH BASELINE OR APPROVES CHANGE TO BASELINE**
  - **PLANT AUTHORIZES (THROUGH P.O.C.) WORK AND IMPLEMENTS**





# **PLANT SUPPORT FUNCTIONS**

## **(continued)**

### **CORPORATE NUCLEAR SAFETY REVIEW BOARD**

- **INDEPENDENT ASSESSMENT OF NUCLEAR SAFETY MATTERS**
- **MEETS TECHNICAL SPECIFICATION REQUIREMENTS**
- **UTILIZES OUTSIDE MEMBERS AND CONSULTANTS**

## **SUMMARY CORPORATE ORGANIZATION**

- **CORPORATE COMMITMENT TO SAFETY AND OPERATIONAL EXCELLENCE**
- **TOP LEVEL MANAGERS HAVE SUBSTANTIAL NUCLEAR EXPERIENCE**
- **ADEQUATE STAFF FOR OPERATION AND TECHNICAL SUPPORT FUNCTIONS**



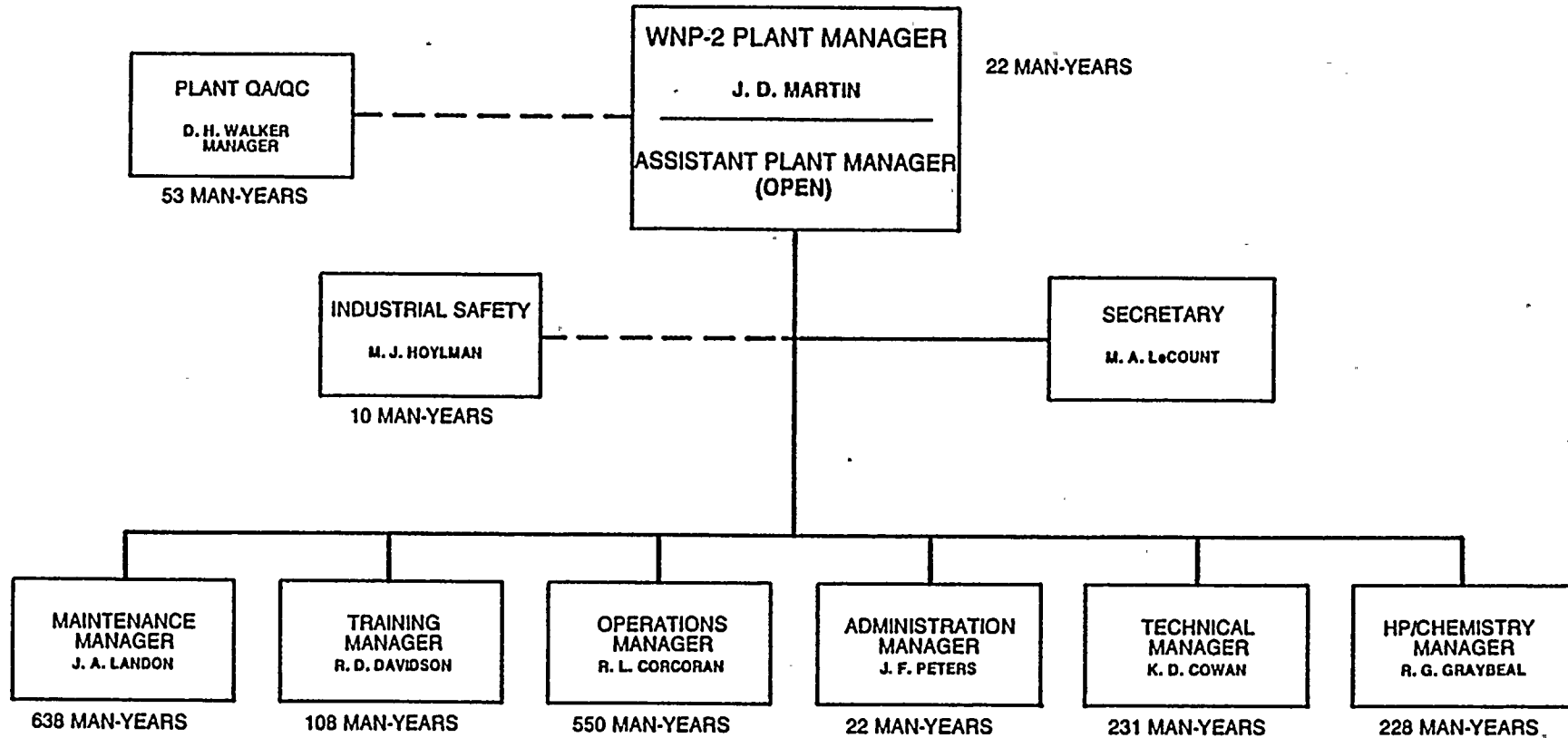
# **OPERATIONS AND MAINTENANCE**

- PERSONNEL SELECTION
- TRAINING

**J. D. MARTIN  
PLANT MANAGER,  
WNP-2**

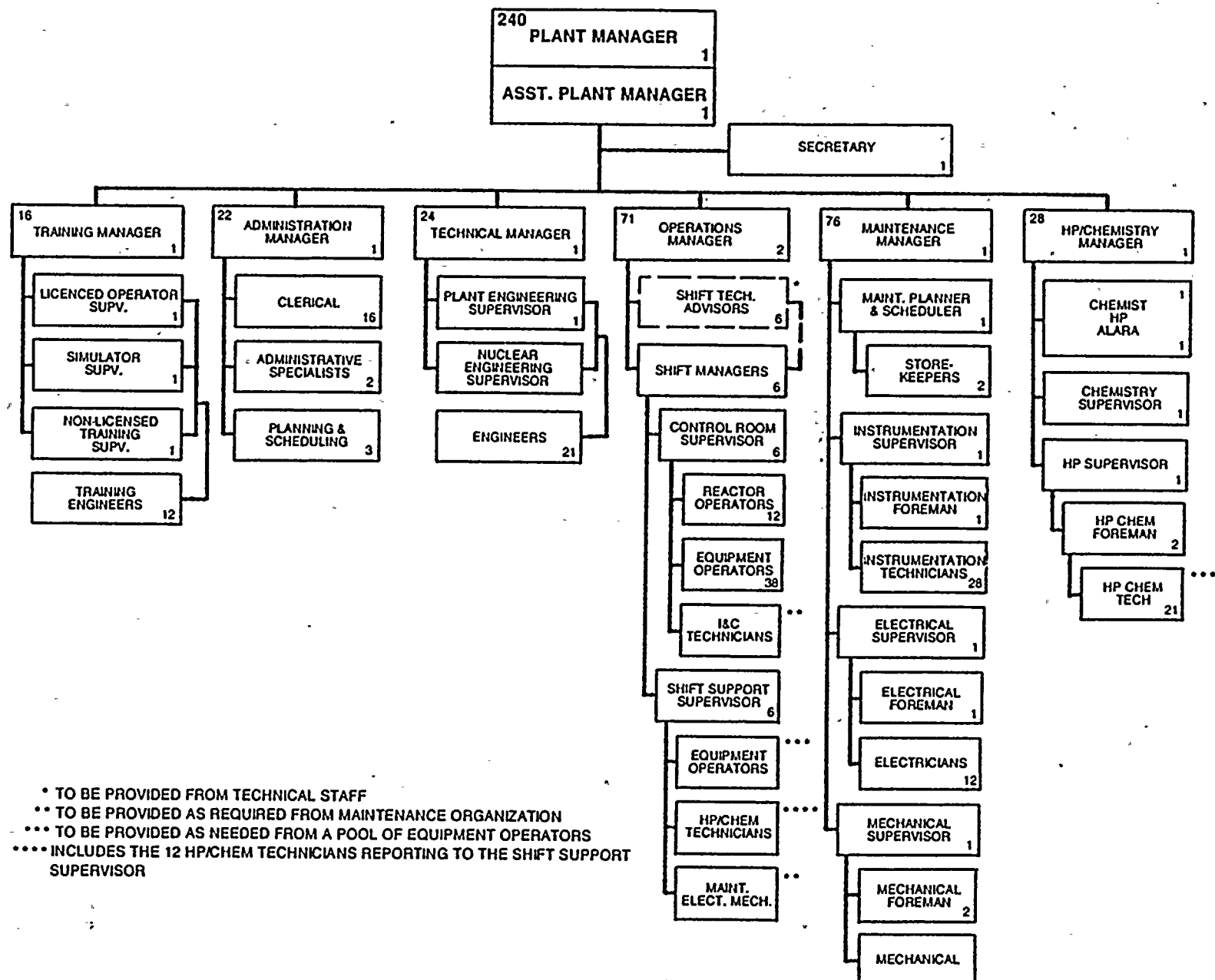
# WNP-2 PLANT

## NUCLEAR EXPERIENCE



- GREATER THAN 1800 MANYEARS ONSITE NUCLEAR EXPERIENCE.
- OF WHICH
- GREATER THAN 600 MANYEARS ONSITE COMMERCIAL BWR EXPERIENCE.

# MATURE PLANT OPERATING ORGANIZATION





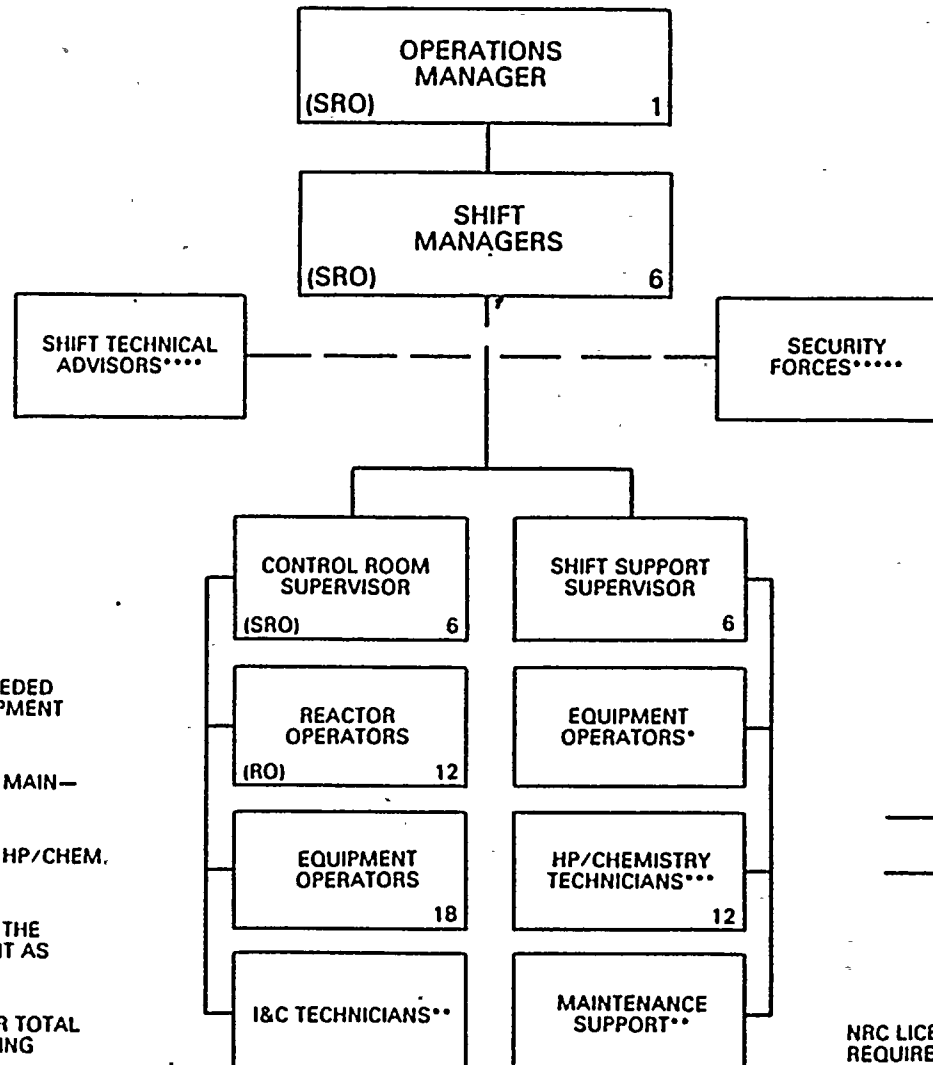
## **SHIFT STRUCTURE**

- **Planning and staffing for 6 shifts (5 shifts minimum)**
- **Nominally 14 people per shift (9 minimum)**
- **Structure**
  - **4 Operating shift**
  - **1 Relief shift**
  - **1 Training shift**



# WASHINGTON PUBLIC POWER SUPPLY SYSTEM

## WNP-2 OPERATIONS DEPARTMENT



\* TO BE PROVIDED AS NEEDED FROM A POOL OF EQUIPMENT OPERATORS

\*\* TO BE PROVIDED FROM MAINTENANCE DEPARTMENT

\*\*\* TO BE PROVIDED FROM HP/CHEM. DEPARTMENT

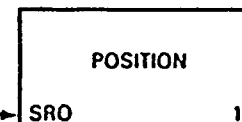
\*\*\*\* TO BE PROVIDED FROM THE TECHNICAL DEPARTMENT AS REQUIRED

\*\*\*\*\* SEE SECURITY PLAN FOR TOTAL SECURITY FORCE STAFFING LEVEL

### LEGEND

———— FUNCTIONAL REPORTING  
 - - - - LINE OF COMMUNICATION

NRC LICENSE REQUIRED →



NUMBER OF PERSONNEL IN POSITION

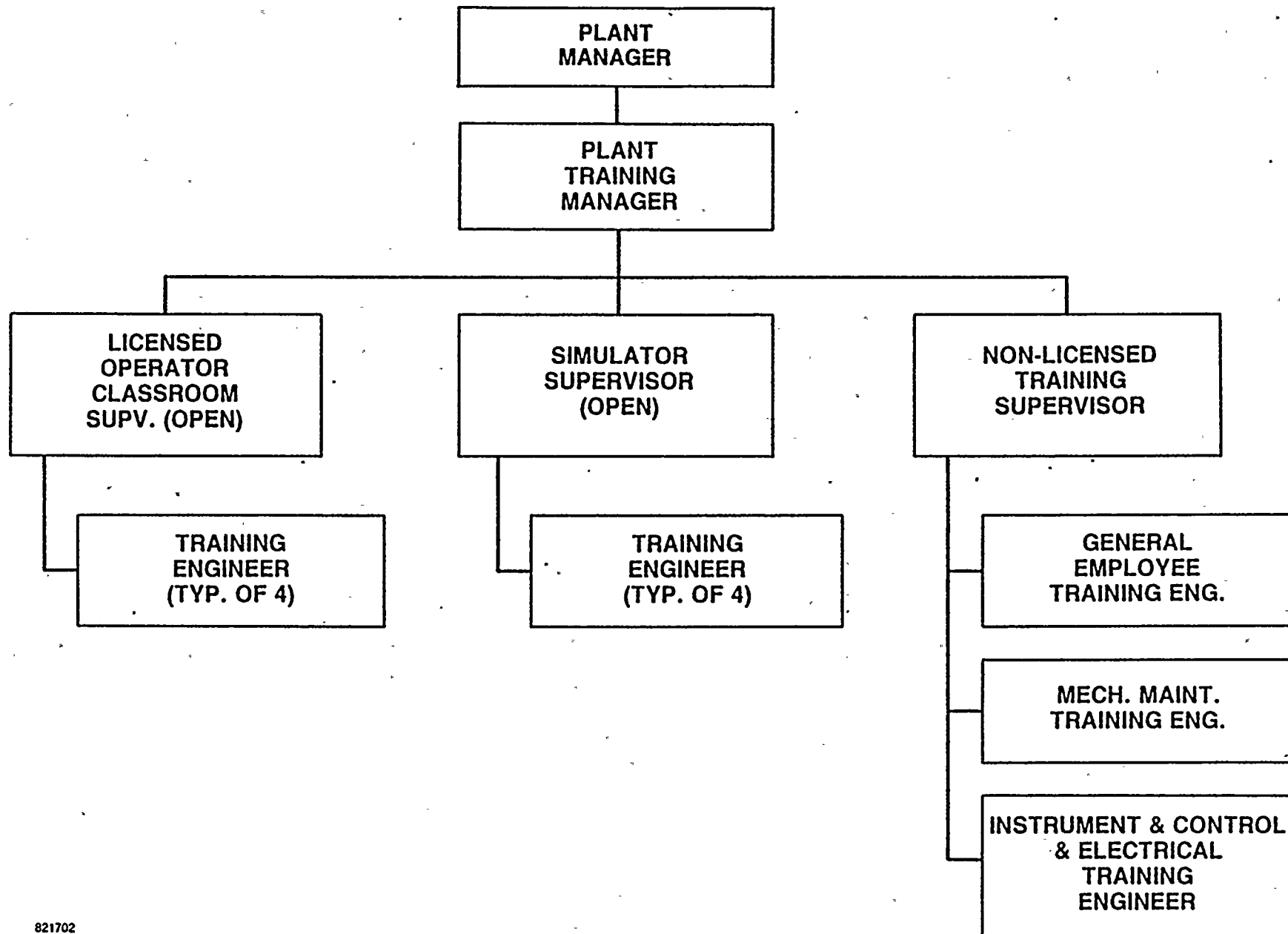
# WNP-2 PLANT OPERATIONS STAFFING

	On Board 8/82	Manning at WNP-2 Fuel Load
Plant Management	2	3
Operations	71	71
Includes: Supervision	1	2
Principal Engineer	1	1
Shift Managers	11	6
CR Supervisors	5	6
Shift Support Supervisors	0	6
Reactor Operators	10	12
Equipment Operators	38	38
Operations Engineers	5	0
Maintenance	76	76
Includes: Supervision	5	6
Electricians	16	12
I&C Technicians	25	28
Mechanics	27	25
Spare Parts	2	2
Storekeeper	1	3
Technical	24	24
Includes: Supervision	4	4
Plant Engineering	11	10
Reactor Engineering	9	10
HP/Chemistry	28	28
Includes: Supervision	6	6
Technicians	22	22
Administration	22	22
Training	16	16
<b>TOTAL</b>	<b>239</b>	<b>240</b>

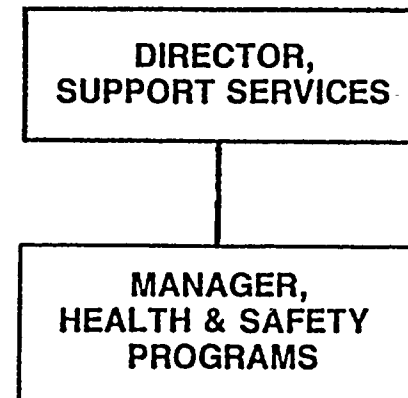
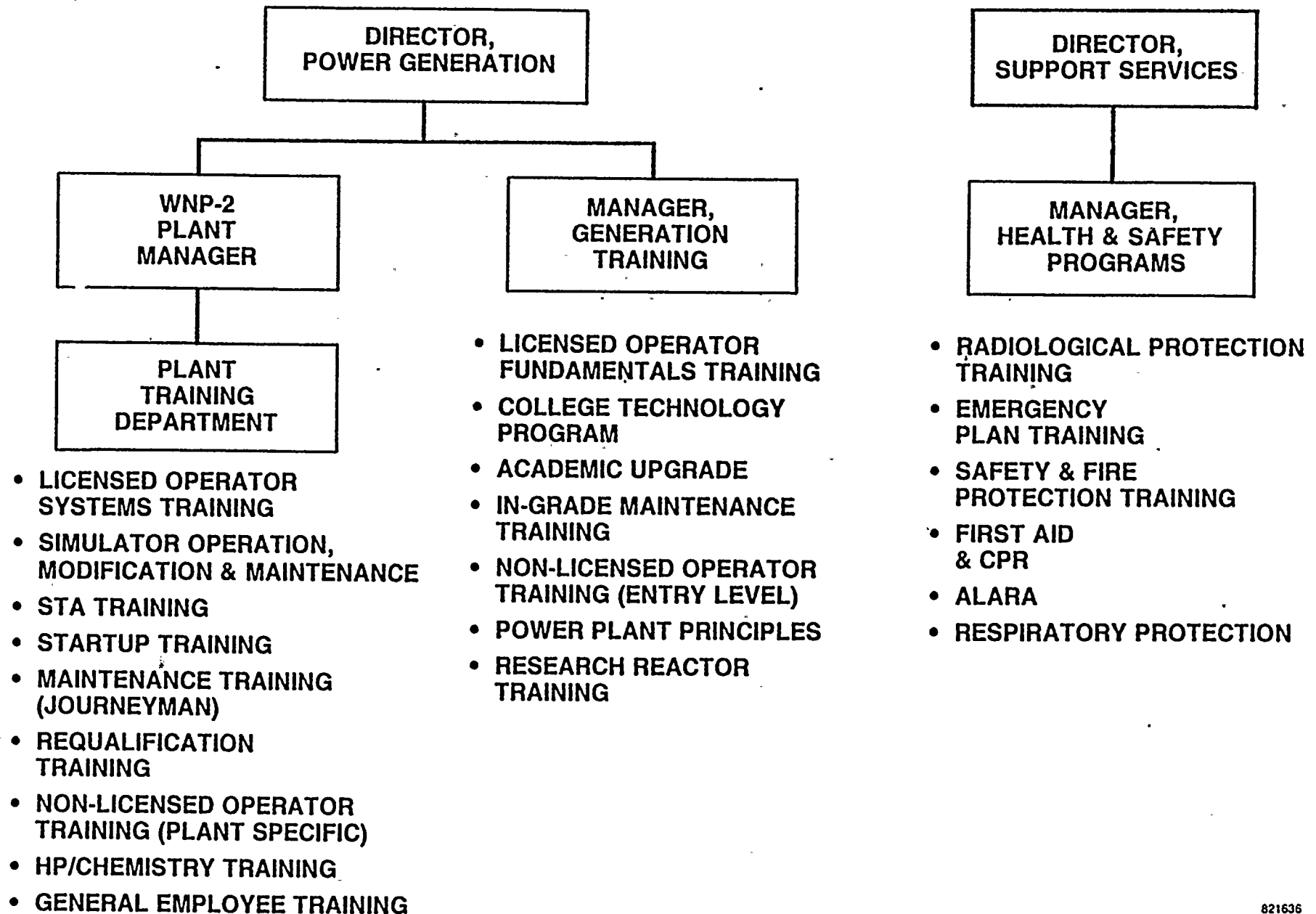
## **TRAINING PROGRAMS FOR STARTUP AND OPERATION OF WNP-2**

- **WNP-2 TRAINING DEPARTMENT ORGANIZATION**
- **PHILOSOPHY FOR PLANT STAFF TRAINING**
- **GENERAL EMPLOYEE TRAINING**
- **OPERATOR TRAINING**
- **TECHNICAL STAFF TRAINING**
- **MAINTENANCE TRAINING**
- **HEALTH PHYSICS/CHEMISTRY TRAINING**
- **TRAINING DEPARTMENT STAFF TRAINING**
- **STARTUP/TEST STAFF TRAINING**

# WNP-2 TRAINING DEPT. ORGANIZATION



# PHILOSOPHY FOR PLANT STAFF TRAINING



ATTACHMENT 2

Richard R. Stickney  
Manager, Generation Training  
Power Generation Directorate

Educational Background	Professional Level Experience
<p>Montana State University B. S. Mechanical Engineering (1960)</p> <p>Certified Professional Engineer (State of Washington)</p>	<p>Hercules, Inc., Magna, Utah (1960-66) Chemical Propulsion Division</p> <ul style="list-style-type: none"><li>- Engineer</li><li>- Development Engineer</li><li>- Sr. Development Engineer</li></ul> <p>General Electric, Richland, Washington (1966-67)</p> <p>Engineer for Process Engineering Group at "N" Reactor</p> <p>Douglas United Nuclear, Inc., Richland, Washington (1967-73)</p> <p>Engineer and Sr. Engineer for Process Engineering, Analysis and Evaluation at "N" Reactor</p> <p>Washington Public Power Supply System Richland, Washington (1973-Present)</p> <ul style="list-style-type: none"><li>- Technical Supervisor, Generation Division</li><li>- Nuclear Engineer</li><li>- Manager, Operational Training</li><li>- Manager, Generation Training</li></ul>

