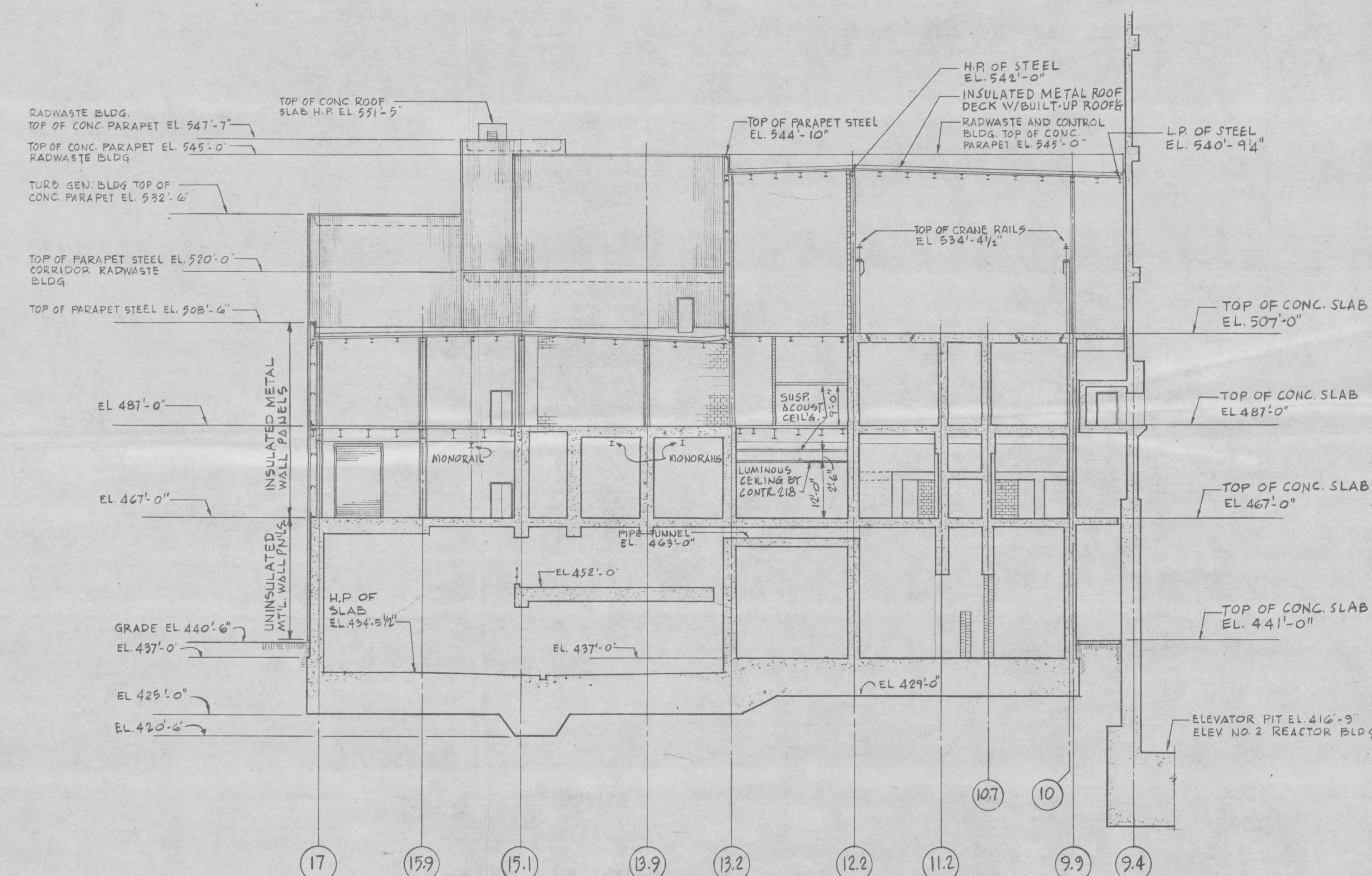
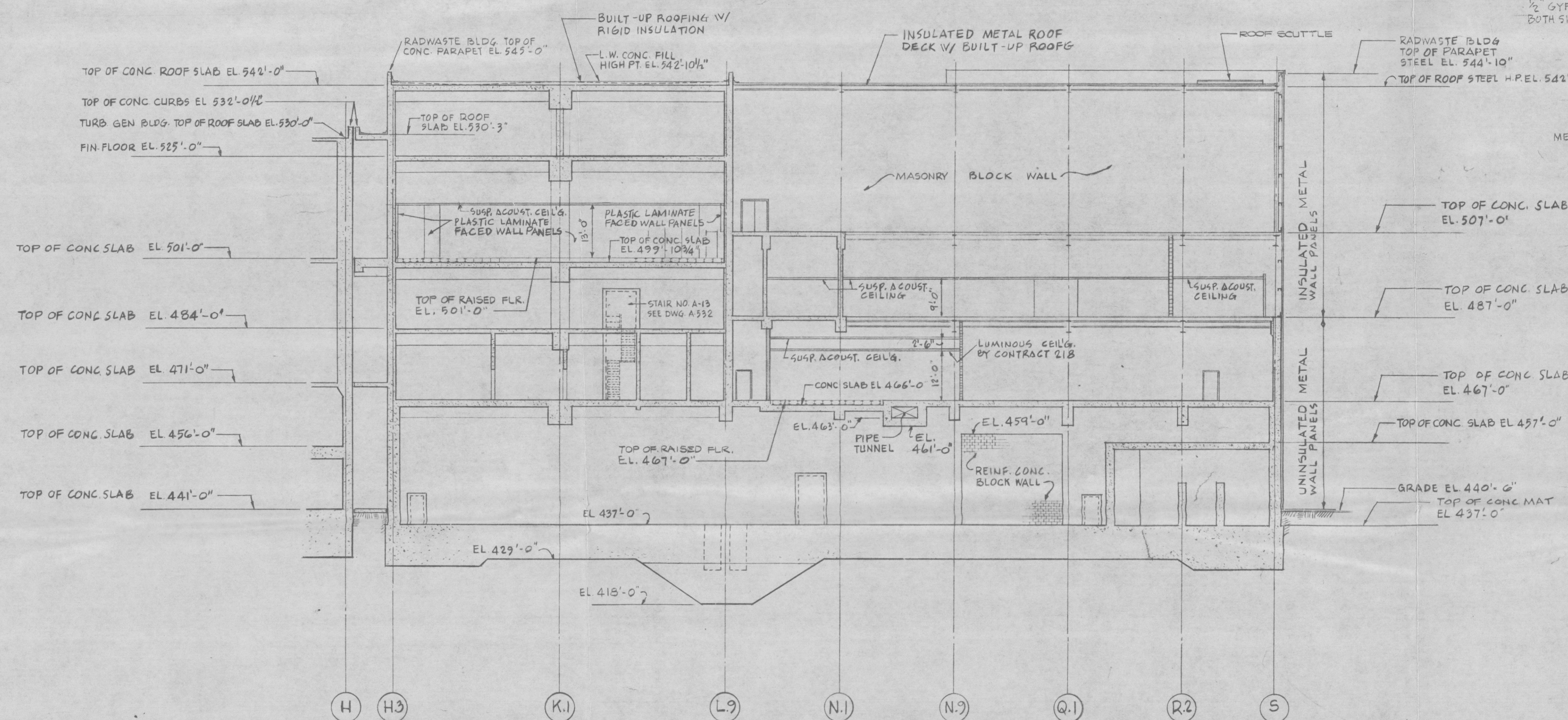


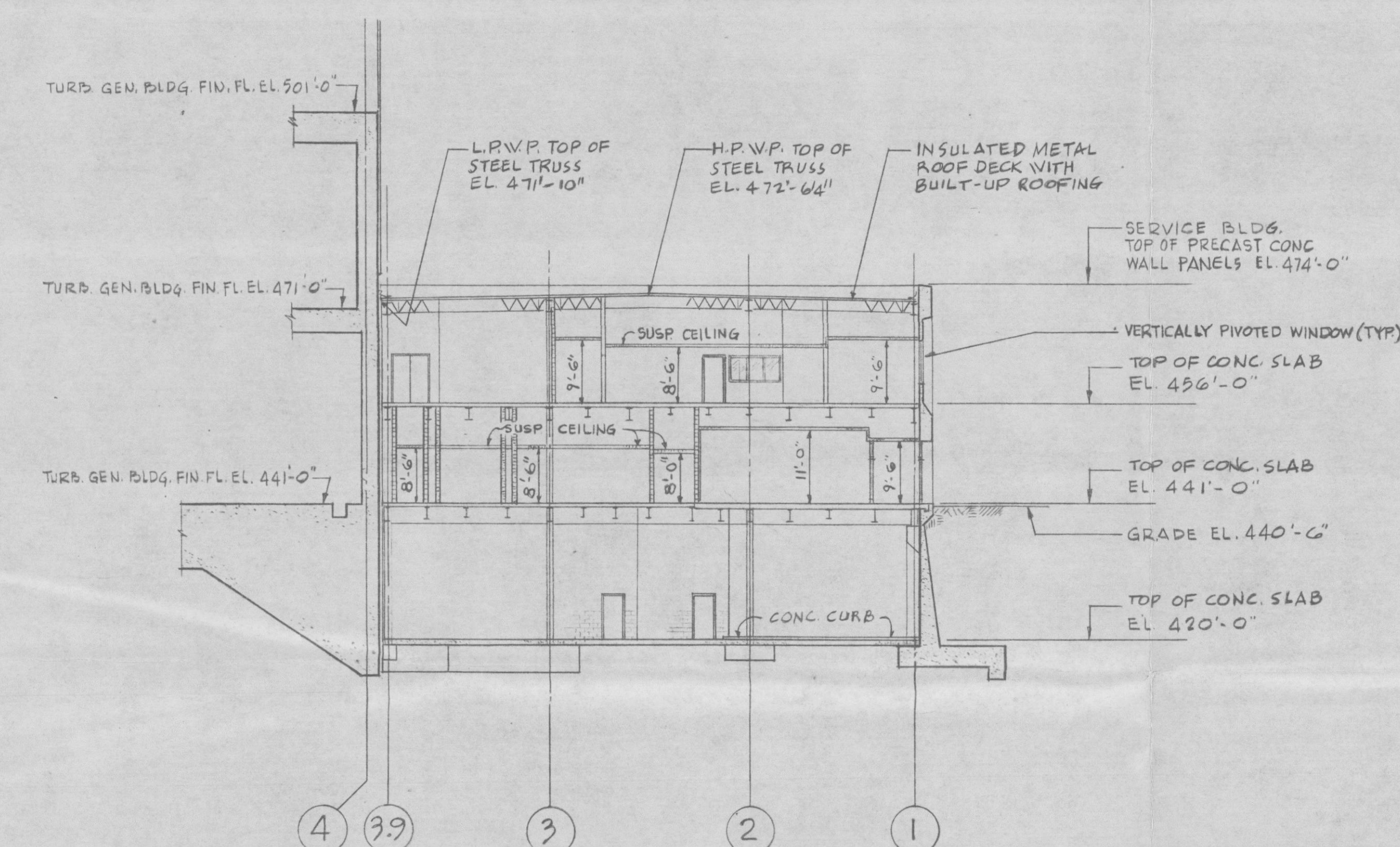
1. FOR GENERAL NOTES, LEGEND AND SYMBOLS  
SEE DIV. 507.



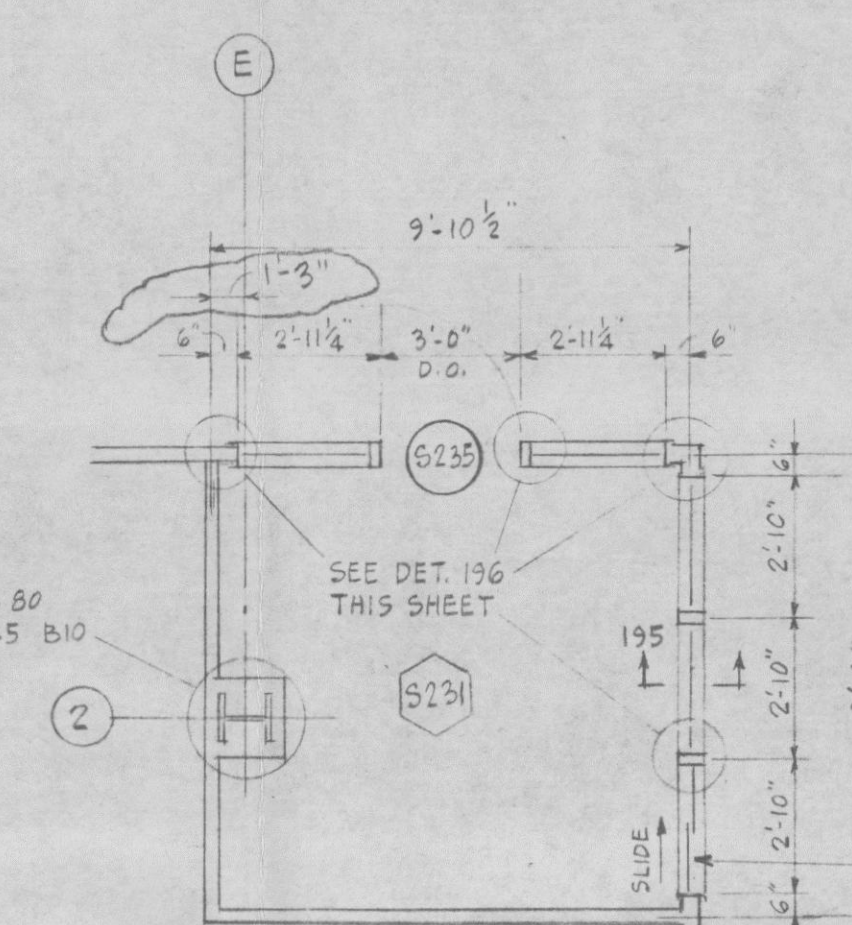
SECTION - 138 - 138  
DWGS. A506, A507, A508, A509 & A511



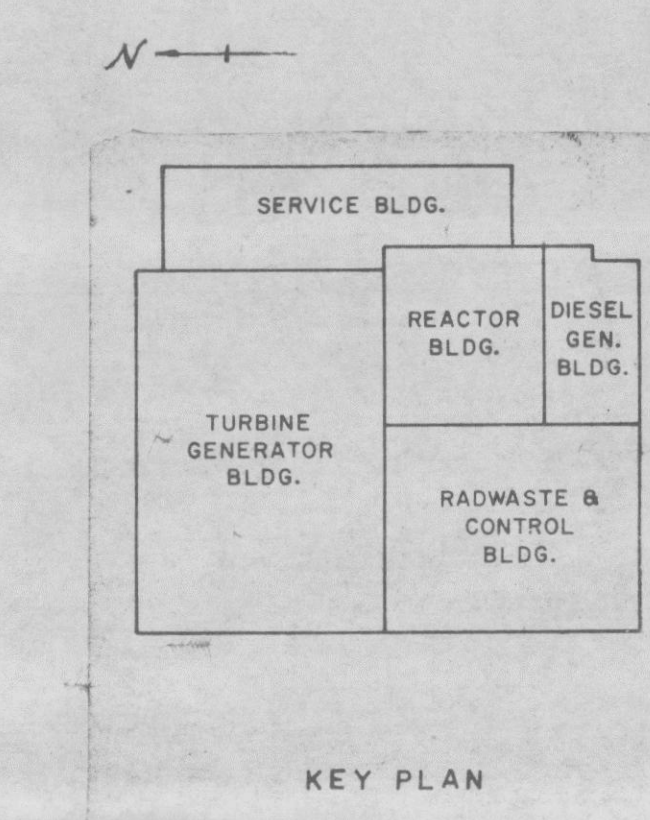
SECTION · 139-139  
DWS. A506, A507, A508, A509 & A511



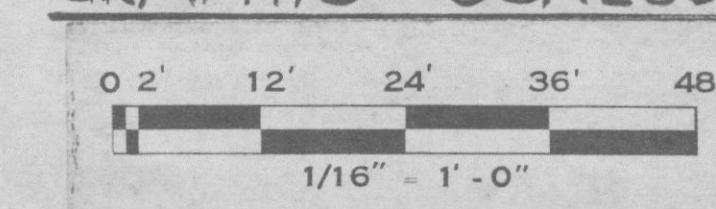
SECTION · 140-140  
DWGS. A502 A507 & A511



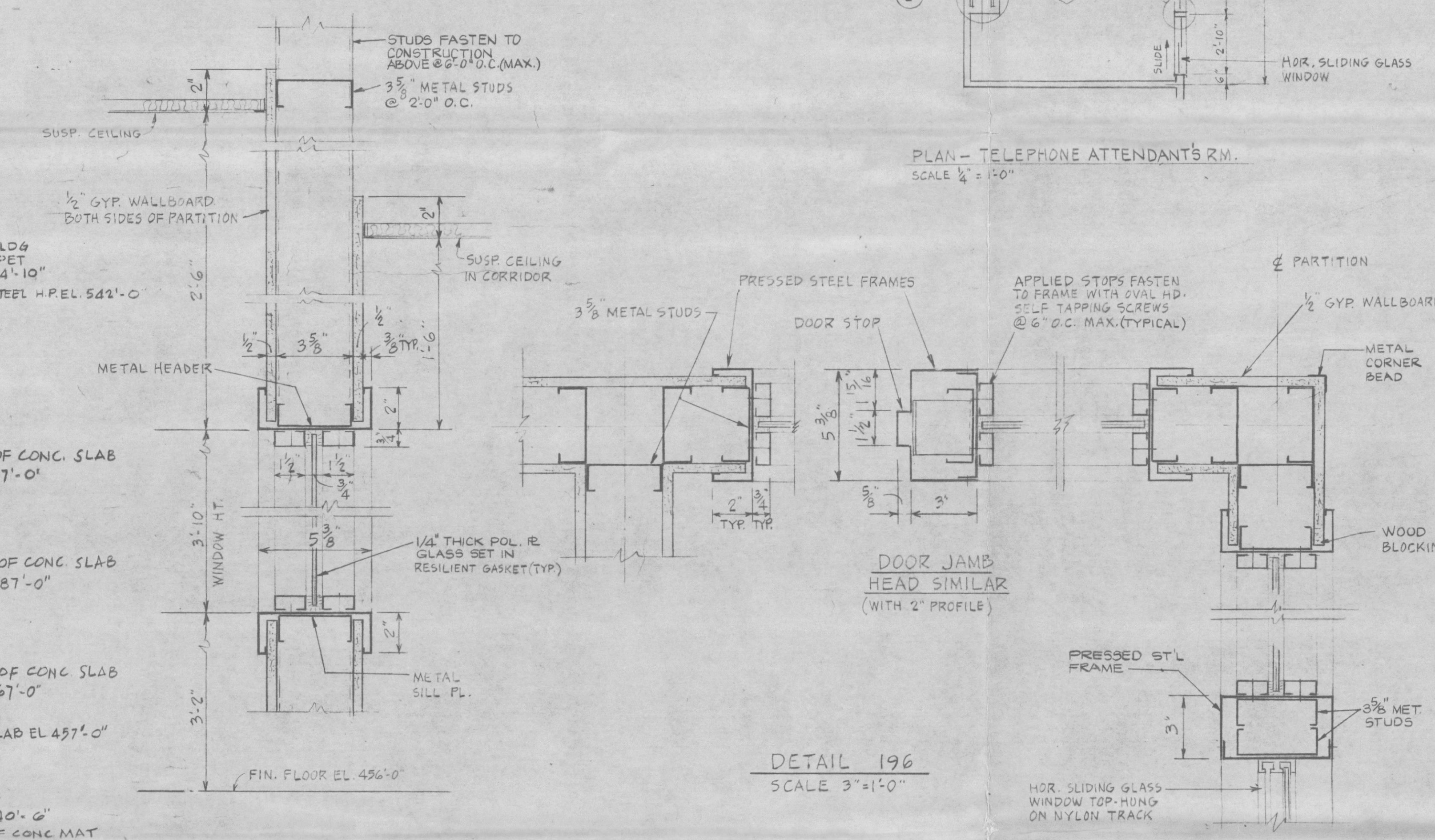
PLAN - TELEPHONE ATTENDANT'S RM  
SCALE  $\frac{1}{2}'' = 1'-0''$



## GRAPHIC SCALES



ALL WORK FOR CONTRACT 2808-210  
IS QUALITY CLASS AS NOTED IN THE  
SPECIFICATIONS.



DETAIL 196  
SCALE 3"=1'-0"

SECTION 195-195  
SCALE 3"=1'-0"

REVISION		DATE	DRWN	CHD	APPROVED	REV NO	REVISION		DATE	DRWN	CHD	APPROVED	RELEASED FOR	BY	D
1					2						3	4	5	6	7
4	CONTRACT REVISION (5/4/54) FOR NORTH WALK RM. 5-231, (5/4/54) PER PCN 3304, ECN 210-013 & RPT. 210-1801	5/26/54	NA	W	M	3/4/54	0	APPROVED FOR CONSTRUCTION. REVISED QUALITY 1/3/55 NOTE (E-1)	5/24/54	A.C.	H.C.	M	1/1/55	STATUS	
							1	DELETED NOTE (1-2) REVISED PER PCN NO. 1320.	1/6/54	A.C.	H.C.	M	1/1/55	ISSUING OFFICE	
							2	REVISED SECTION 139-139, (A, (C-13). ADDED NOTE (1-11) REVISED PER PCN NO. 1401 & 1425.	1/6/54	A.C.	H.C.	M	1/1/55	ADDRESSING	M 5/4/54
							3	CONTRACT 510, ADDED 5-111 TELEFONALANT'S RM. SECT. 195, 195, DET. 196, REV. PER PCN NO. 1802	1/6/54	A.C.	H.C.	M	1/1/55	INCIDENT NO.	
									1/6/54	A.C.	H.C.	M	1/1/55	CONSTRUCTION	
													APPLY TO SPEC. NO.	2	

TERA  
APERTURE  
CARD

**BURNS AND ROE, INC.**  
ENGINEERS AND CONSTRUCTORS  
ORADELL, N. J.    HEMPSTEAD, N. Y.    LOS ANGELES, CALIF.

BUILDING SECTIONS SH'T. NO. 2

WASHINGTON PUBLIC POWER SUPPLY SYSTEM  
HANFORD No. 2

ENGINEERING REVIEW					SCALE 1/16" = 1' - 0"	
DIVISION	MECH.	ELECT.	STRUCT.	ARCH.	DRAWN BY	CHECKED BY
ENGR.	[Handwritten initials]				DRWN. E. DWILVER	CHKD. D.C.
DATE	9/26/96				BY/CHK. H. CHAN	DATE 1-2-97
APPROVED FOR CONSTRUCTION					[Handwritten signature]	
FOR CHIEF ARCHITECT					REVIEWED BY CHIEF DRAFTSMAN	
CLIENT APPROVAL					W. O. 2808	
DWG. A 513						

8201070249