

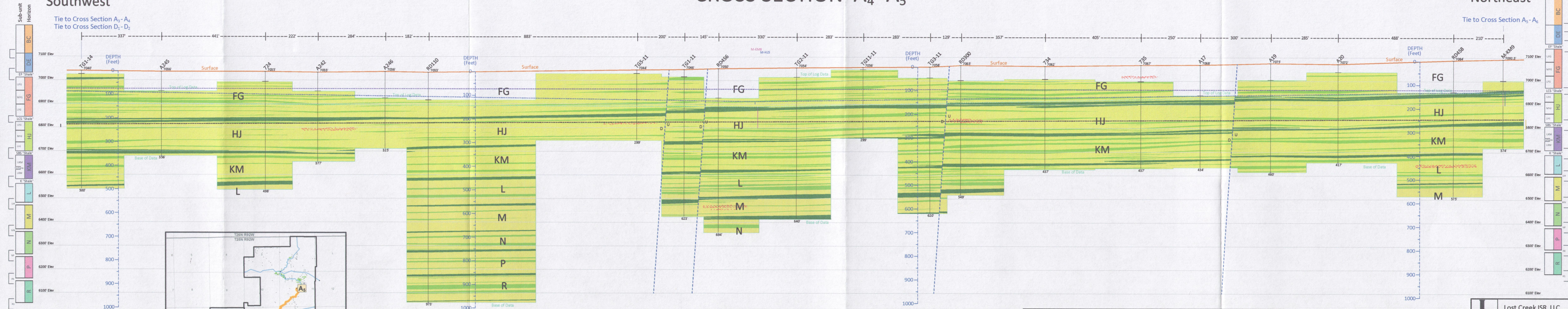
A₄
Southwest

Tie to Cross Section A₃-A₄
Tie to Cross Section D₁-D₂

CROSS SECTION A₄-A₅

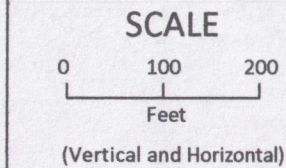
A₅
Northeast

Tie to Cross Section A₅-A₆



Legend

- Aquitard : clay, silt, shaly sand
- Named shale:
- Unnamed shale:
- Sand
- Mineralization: (generalized)
- Projected Potentiometric Surfaces
- FG:
- HJ:
- KM:
- N:



Lost Creek ISR, LLC
Casper, Wyoming, USA

PLATE D5-2d
Cross Section A₄-A₅
(Southwest-Northeast)

Lost Creek Permit
LC East Amendment

Issued For: WDEQ-LQD 1.0
Geology by C. VanHolland
Issued/Revised: original