

REGULATORY INFORMATION DISTRIBUTION SYSTEM (RIDS)

ACCESSION NBR:7908150560 DOC DATE: 79/08/02 NOTARIZED: NO DOCKET #
 FACIL:50-397 WPPSS Nuclear Project, Unit 2, Washington Public Powe 05000397
 AUTH.NAME AUTHOR AFFILIATION
 RENBERGER,D,L. Washington Public Power Supply System
 RECIP.NAME RECIPIENT AFFILIATION
 ENGELKEN,R.H. Region 5, San Francisco, Office of the Director

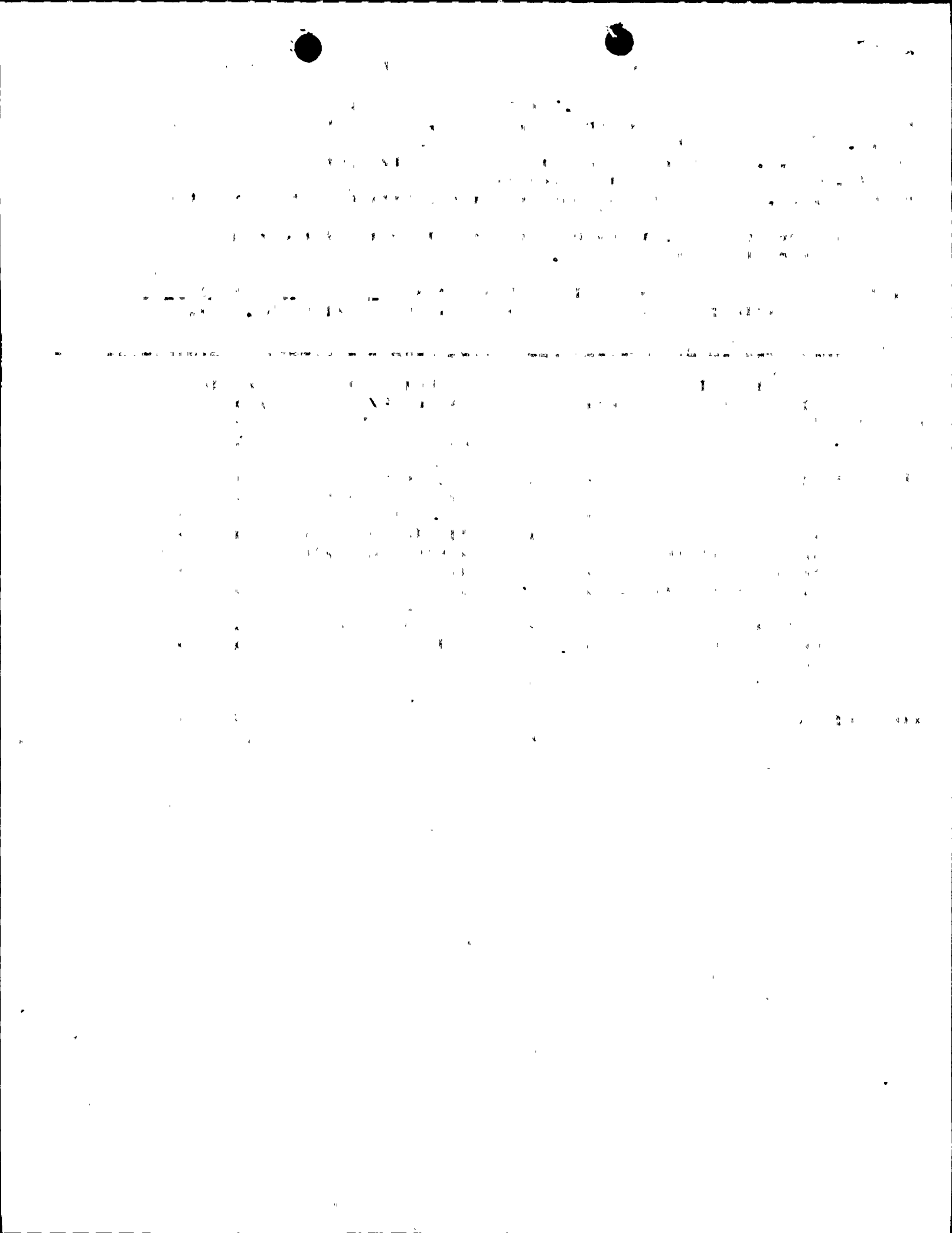
SUBJECT: Forwards deficiency rept re diesel engine turbo charger thrust bearing problem.

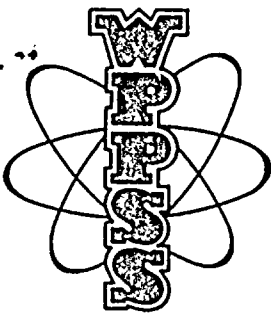
DISTRIBUTION CODE: B019S COPIES RECEIVED:LTR 1 ENCL 1 SIZE: 1+1
 TITLE: CONSTRUCTION DEFICIENCY REPORT (10CFR50.55E).

NOTES: PM - 2 CYS ALL MATL.

	RECIPIENT		COPIES			RECIPIENT		COPIES	
	ID	CODE/NAME	LTTR	ENCL		ID	CODE/NAME	LTTR	ENCL
ACTION:	14	PM M LYNCH	1	1	15	BC LWR #4	1	1	
	20	LA LWR #4	1	1	21	AD LWR	1	1	
INTERNAL:	01	REG FILE	1	1	02	NRC PDR	1	1	
	05	I&E	2	2	07	EDO & STAFF	1	1	
	08	MPA	1	1	09	DEPY DIR DPM	1	1	
	10	QAB	1	1	11	STANDRDS DEV	1	1	
	12	JORDAN,E/IE	1	1	13	FIELD COOR/IE	1	1	
	16	AD FOR ENGR	1	1	17	AD PLANT SYS	1	1	
	17	AD REAC SFTY	1	1	19	AD SYS/PROJ	1	1	
	22	DIR DPM	1	1	23	OELD	1	1	
		AD/SITE TECH	1	1		DIRECTOR DSE	1	1	
		GEOSCIENCES BR	1	1		MATL ENG BR	1	1	
		MECH ENG BR	1	1		S HANAUER	1	1	
		STRUCT ENG BR	1	1					
EXTERNAL:	03	LPDR	1	1	04	NSIC	1	1	
	24	ACRS	16	16					

AUG 16 1979





Washington Public Power Supply System
A JOINT OPERATING AGENCY

P. O. Box 968 3000 GEO. WASHINGTON WAY RICHLAND, WASHINGTON 99352 PHONE (509) 375-5000

August 2, 1979
G02-79-137

REGULATORY DOCKET FILE COPY

Nuclear Regulatory Commission
Region V
Office of Inspection and Enforcement
Suite 202, Walnut Creek Plaza
1900 N. California Boulevard
Walnut Creek, California 94596

Attention: Mr. R. H. Engelken, Director

Subject: WPPSS NUCLEAR PROJECT NO. 2
DOCKET NO. 50-397, CPPR-93
REPORTABLE DEFICIENCY 10CFR50.55(e)

Dear Mr. Engelken:

In accordance with the provisions of 10CFR50.55(e), your staff was informed by telephone on July 17, 1979, of a reportable deficiency involving Electro-Motive Division Diesel Engines in the Diesel Generator onsite emergency power system and the HPCS system. It has been found that under certain repeat start operating modes, there is a possibility that the turbo charger thrust bearing could be damaged. Attached is our report on this deficiency.

If you require additional information, please feel free to contact us.

Very truly yours,

D. L. Renberger
D. L. RENBERGER
Assistant Director
Technology

DLR:WJH:cph

Attachment: Reportable Deficiency Report

cc w/att: JJ Verderber - B&R
JJ Byrnes - B&R
CR Bryant - BPA
JG Davis, Director, NRC, Wash. D.C.
WNP-2 Files

7908150560

3019
S 111