

ACCELERATED DISTRIBUTION DEMONSTRATION SYSTEM

REGULATORY INFORMATION DISTRIBUTION SYSTEM (RIDS)

ACCESSION NBR:8901190004 DOC.DATE: 88/12/31 NOTARIZED: NO DOCKET #
 FACIL:50-244 Robert Emmet Ginna Nuclear Plant, Unit 1, Rochester G 05000244
 AUTH.NAME AUTHOR AFFILIATION
 MCNAMARA,A.E. Rochester Gas & Electric Corp.
 MECREDY,R.C. Rochester Gas & Electric Corp.
 RECIP.NAME RECIPIENT AFFILIATION

SUBJECT: Monthly operating rept for Dec 1988 for RE Ginna station.W/
 890113 ltr.

DISTRIBUTION CODE: IE24D COPIES RECEIVED:LTR 1 ENCL 1 SIZE: 6
 TITLE: Monthly Operating Report (per Tech Specs)

NOTES:License Exp date in accordance with 10CFR2,2.109(9/19/72). 05000244

RECIPIENT ID CODE/NAME	COPIES LTTR ENCL	RECIPIENT ID CODE/NAME	COPIES LTTR ENCL
PD1-3 LA	1 0	PD1-3 PD	5 5
STAHL, C	1 0		
INTERNAL: AEOD/DOA	1 1	AEOD/DSP/TPAB	1 1
ARM TECH ADV	2 2	NRR/DLPQ/PEB 11	1 1
NRR/DOEA/EAB 11	1 1	NRR/DREP/RPB 10	1 1
NUDOCS-ABSTRACT	1 1	<u>REG FILE</u> 01	1 1
RGN1	1 1		
EXTERNAL: EG&G SIMPSON, F	1 1	EG&G WILLIAMS, S	1 1
LPDR	1 1	NRC PDR	1 1
NSIC	1 1		

NOTE TO ALL "RIDS" RECIPIENTS:

PLEASE HELP US TO REDUCE WASTE! CONTACT THE DOCUMENT CONTROL DESK,
 ROOM P1-37 (EXT. 20079) TO ELIMINATE YOUR NAME FROM DISTRIBUTION
 LISTS FOR DOCUMENTS YOU DON'T NEED!

TOTAL NUMBER OF COPIES REQUIRED: LTTR 22 ENCL 20

Monthly Rpt

ut

OPERATING DATA REPORT

DOCKET NO. 50-244

DATE January 13, 1989

COMPLETED BY Andrew E. McNamara
Andrew E. McNamara

TELEPHONE 315-524-4446 x-301
Ginna Station

OPERATING STATUS

1. Unit Name: R.E. GINNA NUCLEAR POWER PLANT
2. Reporting Period: December, 1988
3. Licensed Thermal Power (MWt): 1520
4. Nameplate Rating (Gross MWe): 490
5. Design Electrical Rating (Net MWe): 470
6. Maximum Dependable Capacity (Gross MWe): 490
7. Maximum Dependable Capacity (Net MWe): 470

Notes

The reactor power level was maintained at 100% for the majority of the report period with some exceptions detailed on page 3 and 4 of the report.

8. If Changes Occur in Capacity Ratings (Items Number 3 Through 7) Since Last Report, Give Reasons:

9. Power Level to Which Restricted, If Any (Net MWe):

10. Reasons For Restrictions, If Any:

	This Month	Yr.-to-Date	Cumulative
11. Hours In Reporting Period	744	8,784	167,424
12. Number of Hours Reactor Was Critical	744	7,679.14	137,691.61
13. Reactor Reserve Shutdown Hours	0.0	0.0	1,687.55*
14. Hours Generator On-Line	744	7,593.50	167,424
15. Unit Reserve Shutdown Hours	0	0	8.5*
16. Gross Thermal Energy Generated (MWH)	1,104,055	11,042,681	181,970,414
17. Gross Electrical Energy Generated (MWH)	374,984	3,716,744	59,799,329
18. Net Electrical Energy Generated (MWH)	356,851	3,533,174	56,744,458
19. Unit Service Factor	100%	86.45%	77.21%
20. Unit Availability Factor	100%	86.45%	77.22%
21. Unit Capacity Factor (Using MDC Net)	102.05%	85.58%	73.52%
22. Unit Capacity Factor (Using DER Net)	102.05%	85.58%	73.52%
23. Unit Forced Outage Rate	0%	4.26%	6.38%

24. Shutdowns Scheduled Over Next 6 Months (Type, Date and Duration of Each):

Annual Refueling and Maintenance Shutdown - March 17, 1989 - 49-55 days

25. If Shut Down At End Of Report Period, Estimated Date of Startup:

26. Units In Test Status (Prior to Commercial Operation):

Forecast

Achieved

INITIAL CRITICALITY

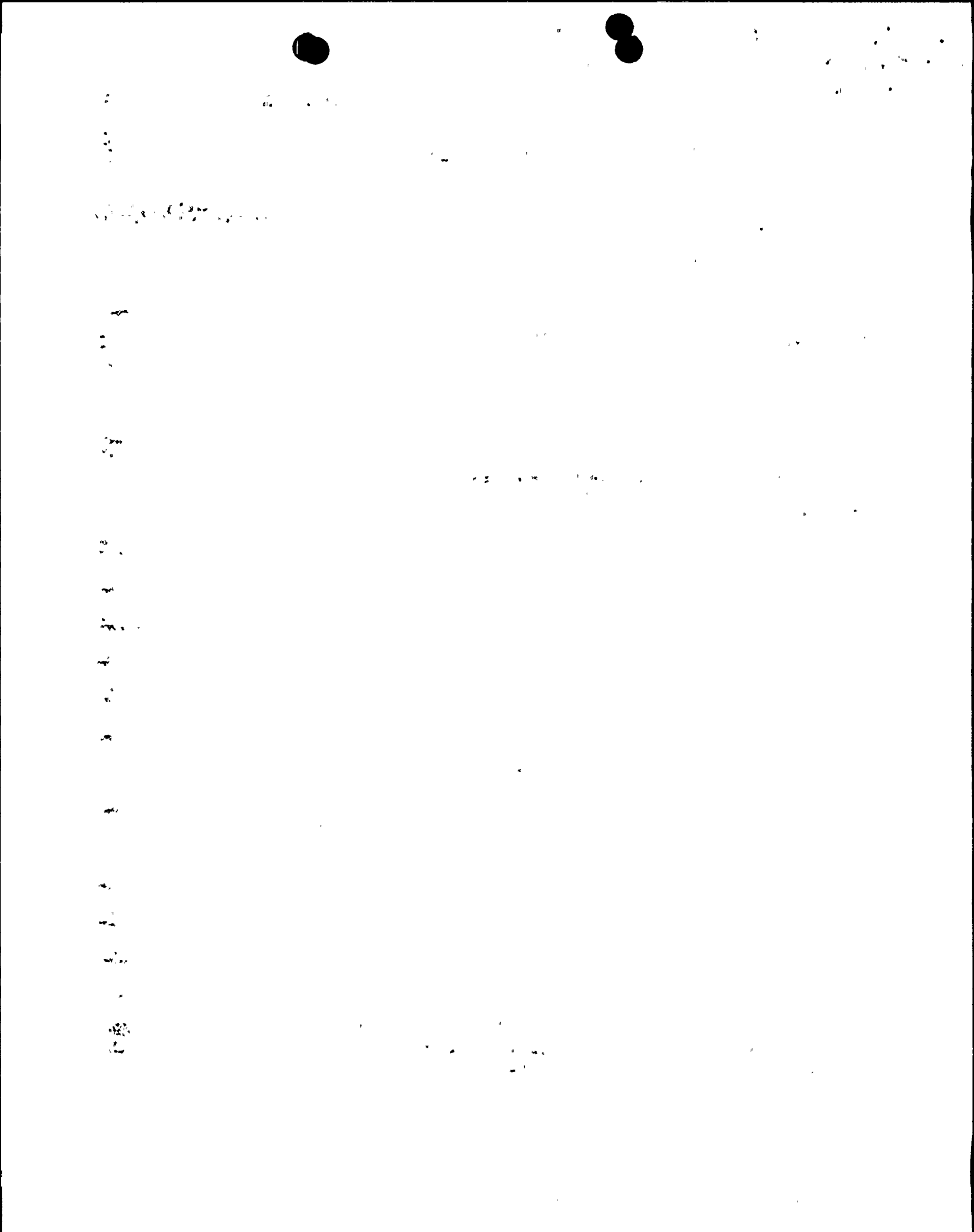
INITIAL ELECTRICITY

COMMERCIAL OPERATION

*Cumulative total commencing January 1, 1975

8901190004 881231
PDR ADOCK 05000244
R PDC

REV. 4/85 49-88



AVERAGE DAILY UNIT POWER LEVEL

DOCKET NO. 50-244
UNIT R.E. Ginna Nuclear Power Plant
DATE January 13, 1989
COMPLETED BY Andrew E. McNamara
Andrew E. McNamara

TELEPHONE 1 (315) 524-4446
Ext. 301 at Ginna

MONTH December, 1988

DAY AVERAGE DAILY POWER LEVEL
(MWe-Net)

1.	<u>491</u>
2.	<u>491</u>
3.	<u>236</u>
4.	<u>463</u>
5.	<u>484</u>
6.	<u>487</u>
7.	<u>491</u>
8.	<u>490</u>
9.	<u>489</u>
10.	<u>491</u>
11.	<u>456</u>
12.	<u>488</u>
13.	<u>488</u>
14.	<u>488</u>
15.	<u>489</u>
16.	<u>488</u>

DAY AVERAGE DAILY POWER LEVEL
(MWe-Net)

17.	<u>488</u>
18.	<u>489</u>
19.	<u>489</u>
20.	<u>490</u>
21.	<u>491</u>
22.	<u>491</u>
23.	<u>491</u>
24.	<u>490</u>
25.	<u>491</u>
26.	<u>491</u>
27.	<u>491</u>
28.	<u>491</u>
29.	<u>491</u>
30.	<u>491</u>
31.	<u>491</u>

INSTRUCTIONS

On this format, list the average daily unit power level in MWe-Net for each day in the reporting month. Compute to the nearest whole megawatt.

UNIT SHUTDOWN AND POWER REDUCTIONS

REPORT MONTH DECEMBER 1988

DOCKET NO. 50-244

UNIT NAME: R.E. GINNA NUCLEAR POWER PLANT.

DATE January 13, 1989

COMPLETED BY Andrew E. McNamara
Andrew E. McNamara

TELEPHONE: 315-524-4446 x-301
Ginna Station

No.	Date	Type 1	Duration (Hours)	Reason 2	Method of Shutting Down Reactor 3	Licensee Event Report #	System Code 4	Component Code 5	Cause & Corrective Action to Prevent Recurrence
PR*	12-3-88	S	0	A	-	-	HC	HTEXCH	Reactor power level reduction to approximately 46% to repair tube leaks in the 1-A-2 and 1-B-1 and condenser water boxes.
PR*	12-11-88	F	0	A	-	88-010	IB	INSTRU	Reactor power level reduction to approximately 65% due to icing up of two sensing lines on the "B" steam generator pressure transmitters.

1

F: Forced
S: Scheduled

2

Reason:
A-Equipment Failure (Explain)
B-Maintenance or Test
C-Refueling
D-Regulatory Restriction
E-Operator Training & License Examination
F-Administrative
G-Operational Error (Explain)
H-Other (Explain)

3

Method:
1-Manual
2-Manual Scram.
3-Automatic Scram.
4-Other (Explain)

4

Exhibit G - Instructions for Preparation of Data Entry Sheets for Licensee Event Report (LER) File (NUREG-0161)

5

Exhibit 1 - Same Source

NARRATIVE SUMMARY OF OPERATING EXPERIENCE

DOCKET NO. 50-244
 UNIT R.E. Ginna Nuclear Power Plant
 DATE January 13, 1989
 COMPLETED BY Andrew E. McNamara
 Andrew E. McNamara
 TELEPHONE 1 (315) 524-4446
 EXT. 301 at Ginna

MONTH December, 1988

The unit operated at 100% reactor power level for the majority of the report period with a few exceptions detailed below:

On 12/3 the reactor power level was reduced to ~ 47% to repair tube leaks in two condenser water boxes. The reactor power level was restored to 100% after completion of the repairs.

On 12/11 the reactor power level was reduced to ~ 65% due to icing up of two sensing lines on the "B" Steam Generator. The reactor power level was restored to 100% before the end of the day.

On 12/14 the reactor power level was reduced to ~ 94% to perform a periodic test involving Excore-Incore Calibration.

On 12/15 and 12/17 the reactor power level was reduced to ~ 97% to perform periodic tests involving the Auxiliary Feedwater System.

1
2
3
4
5

1991-1992

GINNA STATION
MAINTENANCE REPORT SUMMARY

DECEMBER, 1988

During the month of December, routine maintenance and inspections were completed. Major safety related work included:

- a. CV-4003 Inspected, rebuilt and tested
- b. CV-4004 Inspected, rebuilt and tested
- c. MOV-350 Unplugged line/valve - Boric Acid
- d. Snubber inspection - per M-40



ROCHESTER GAS AND ELECTRIC CORPORATION • 89 EAST AVENUE, ROCHESTER, N.Y. 14649-0001



TELEPHONE
AREA CODE 716 546-2700

GINNA STATION

January 13, 1989

US Nuclear Regulatory Commission
Document Control Desk
Washington, DC 20555

Subject: Monthly Report for December, 1988
Operating Status Information
R. E. Ginna Nuclear Power Plant
Docket No. 50-244

Dear Sir:

Pursuant to our Technical Specification 6.9.1, attached herewith is the monthly operating status report for Ginna Station for the month of December, 1988.

Very truly yours,

Robert C. Mecredy
General Manager
Nuclear Production

RCM/eeh

Attachments

cc: Mr. William T. Russell NRC (1)

LEA
11

