

REGULATORY INFORMATION DISTRIBUTION SYSTEM (RIDS)

ACCESSION NBR: 8706110415 DDC DATE: 87/06/04 NOTARIZED: NO DOCKET #
 FACIL: 50-244 Robert Emmet Ginna Nuclear Plant, Unit 1, Rochester G 05000244
 AUTH. NAME AUTHOR AFFILIATION
 KOBER, R. W. Rochester Gas & Electric Corp.
 RECIP. NAME RECIPIENT AFFILIATION
 Document Control Branch (Document Control Desk)

SUBJECT: Forwards Figures 1-4 inadvertently omitted from 870602
 submittal re performance testing of relief & safety valves.

DISTRIBUTION CODE: A046D COPIES RECEIVED: LTR 1 ENCL 1 SIZE: 5
 TITLE: DR Submittal: TMI Action Plan Rgmt NUREG-0737 & NUREG-0660

NOTES: License Exp date in accordance with 10CFR2.2.109(9/19/72). 05000244

	RECIPIENT ID CODE/NAME	COPIES LTTR ENCL	RECIPIENT ID CODE/NAME	COPIES LTTR ENCL
	PD1-3 LA	1 0	PD1-3 PD	5 5
	STAHLER, C	1 1		
INTERNAL:	AEOD/DOA	1 1	AEOD/DSP/TPAB	1 1
	ARM/DAF/LFMB	1 0	NRR/DEST/ADE	1 0
	NRR/DEST/ADS	1 0	NRR/DREP/EPB	1 1
	NRR/DREP/RPB	1 1	NRR/ARMAS/ILRB	1 1
	OGC/HDS2	1 0	REG FILE 01,	1 1
	RES DEPY GI	1 1		
EXTERNAL:	LPDR	1 1	NRC PDR	1 1
	NSIC	1 1		

BOOK 2
000000

... ..
... ..
... ..

... ..
... ..
... ..

... ..

... ..
... ..

... ..
... ..

... ..
... ..
... ..

... ..
... ..
... ..

... ..
... ..
... ..
... ..
... ..

... ..
... ..
... ..
... ..
... ..

... ..
... ..
... ..
... ..
... ..

... ..
... ..
... ..
... ..
... ..

... ..

... ..

... ..
... ..

... ..
... ..



ROCHESTER GAS AND ELECTRIC CORPORATION • 89 EAST AVENUE, ROCHESTER, N.Y. 14649-0001

ROGER W. KOBER
VICE PRESIDENT
ELECTRIC PRODUCTION

June 4, 1987

TELEPHONE
AREA CODE 716 546-2700



U.S. Nuclear Regulatory Commission
Document Control Desk
Attn: Mr. Carl Stahle
PWR Project Directorate No. 1
Washington, D.C. 20555

Subject: NUREG-0737, Item II.D.1
Performance Testing of Relief and Safety Valves
R. E. Ginna Nuclear Power Plant
Docket No. 50-244

Dear Mr. Stahle:

In RG&E's June 2, 1987 submittal on this subject, Figures 1-4 were inadvertently not transmitted.

These figures are attached. Please excuse the delay.

Very truly yours,

Roger W. Kober

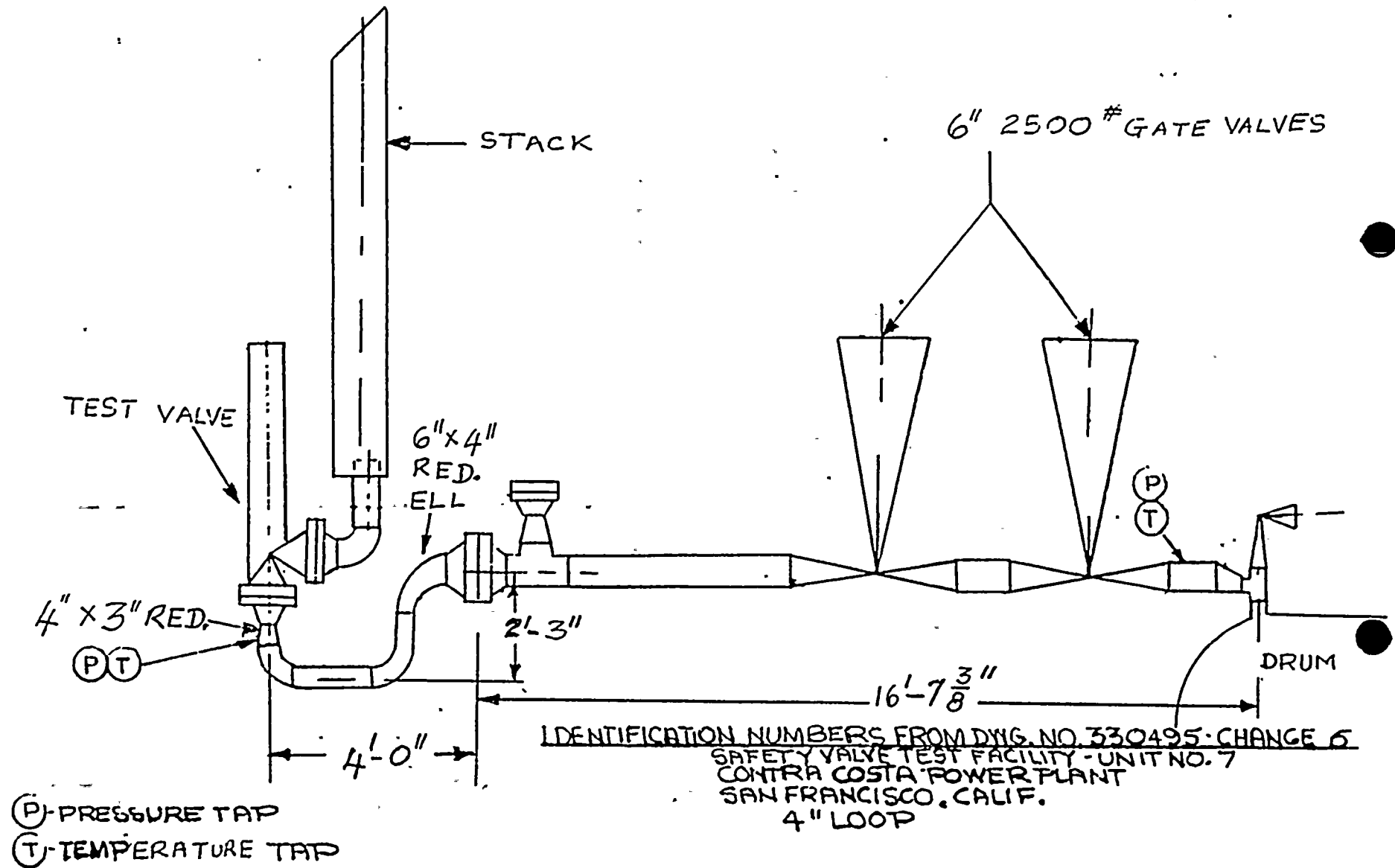
Attachment

8706110415 870604
PDR ADOCK 05000244
P PDR

A046
1/1

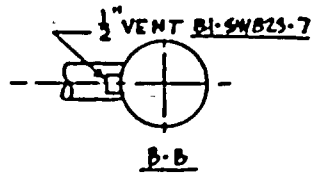
FIGURE 1

CONTRA COSTA LAYOUT



SCALE - NONE

EPRI 3K6 LOOP SEAL ARRANGEMENT



Spool Number 81, Crosby 3K6 Loop Seal

FIG. 3: 3K6 CLOSE CYCLE

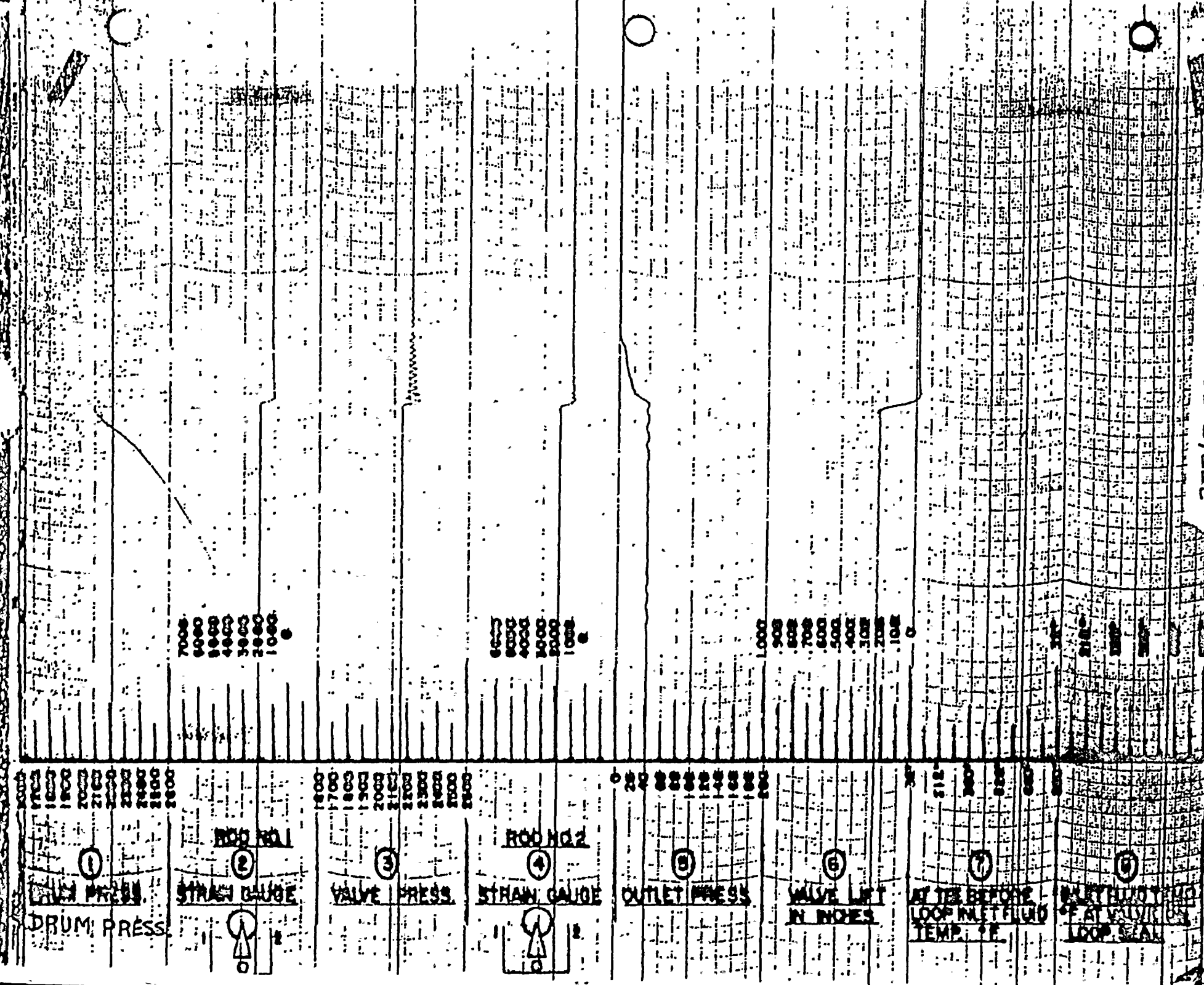


FIG. 4: 3K6 OPEN CYCLE

