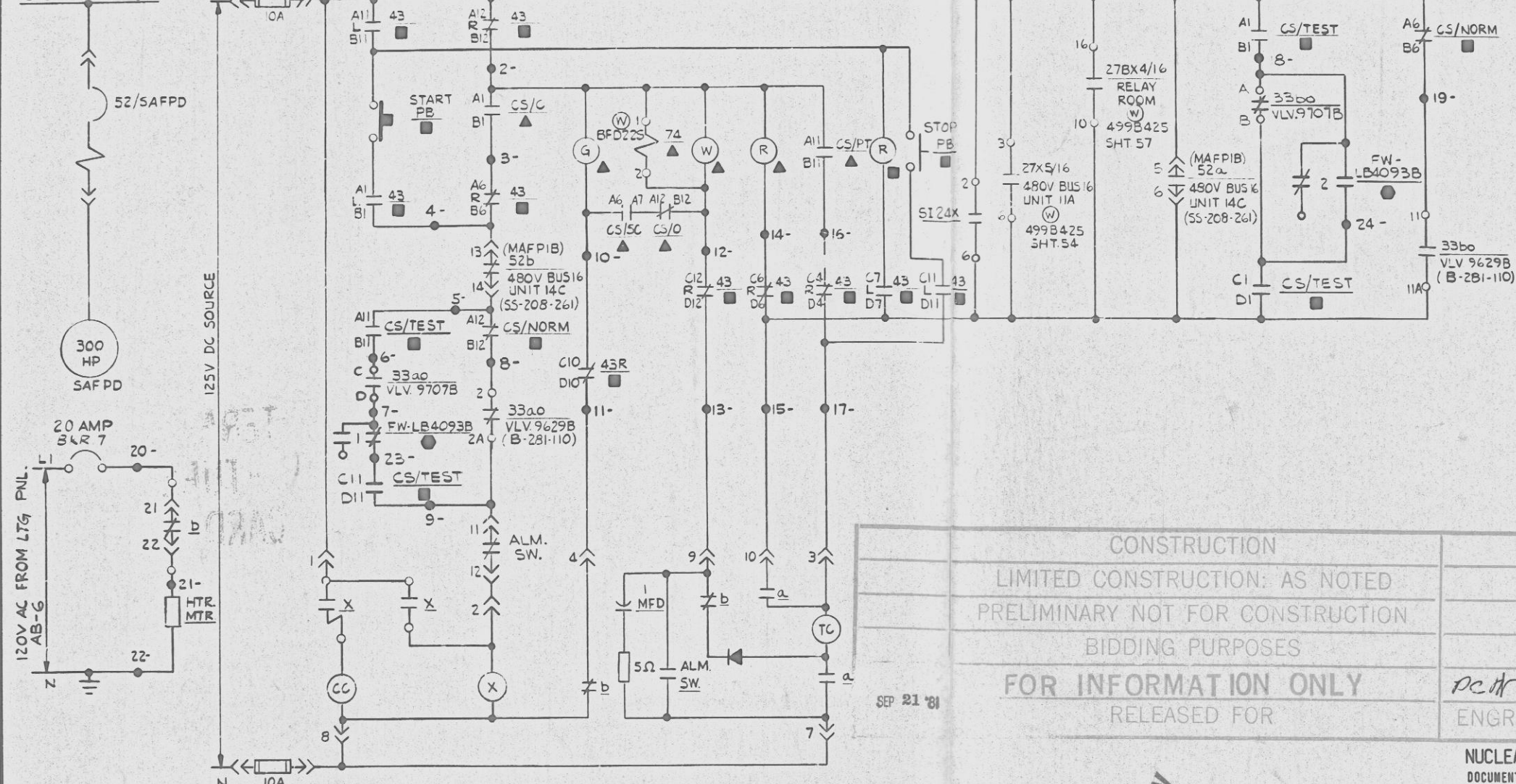


480V SWITCHGEAR
BUS 16 UNIT 17C

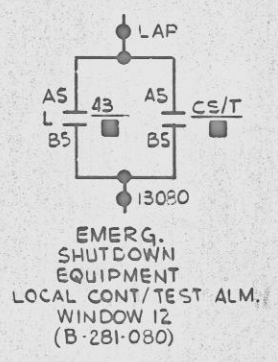
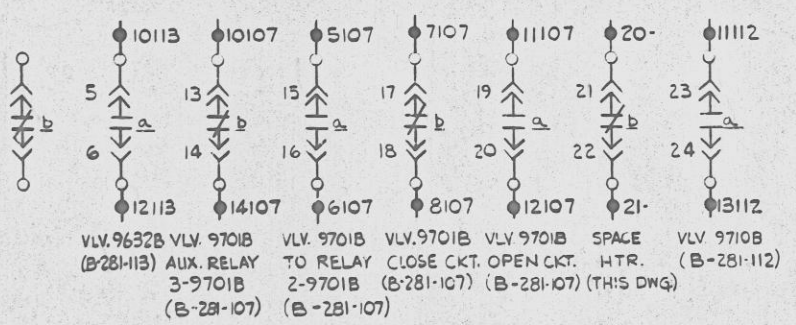
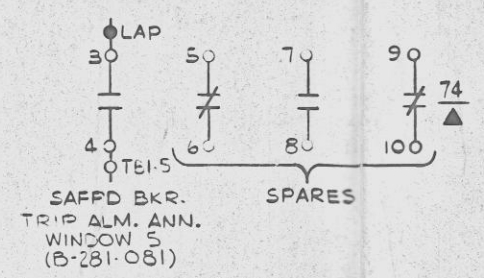
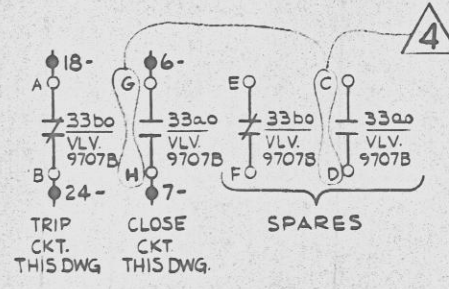


- NOTES:
1. DEVICES WITHOUT LOCATION MARKINGS ARE MOUNTED IN THE SWITCHGEAR.
 2. LAST WIRE MARK USED: 24 - WIRE MARKS HAVE DRAWING SHEET NO. "123" SUFFIX.
 3. VALVE 97076 IS SHOWN IN FULLY CLOSED POSITION.
 4. FOR MOTOR CONTROL SWITCH DEVELOPMENT SEE DEVICE 2C DWG. B-281-073. FOR 43 SWITCH DEVELOPMENT SEE DEVICE 2D DWG. B-281-073. FOR RUN/TEST CONTROL SWITCH DEVELOPMENT SEE DEVICE 2E DWG. B-281-073.
 5. FW-LB4093B CONDENSATE STORAGE TANK LEVEL SWITCH SHOWN IN TANK LEVEL NORMAL POSITION.

- LEGEND:
- ▲ MAIN CONTROL BOARD SECTION
 - LOCAL CONTROL STATION FW-6
 - FIELD INSTALLED WIRE (SEE NOTE 2)
 - SAFPD INSTRUMENT PANEL

- REFERENCES:
- S-881-331 SH. 2 COMPONENT LOGIC DIAGRAM
 - SS-281-065, SH. 12 BLOCK DIAGRAM
 - D-302-071 SYSTEM DIAGRAM

CONSTRUCTION
LIMITED CONSTRUCTION: AS NOTED
PRELIMINARY NOT FOR CONSTRUCTION
BIDDING PURPOSES
FOR INFORMATION ONLY
RELEASED FOR
SEP 21 '81



REGULATORY DOCKET FILE COPY

TERA
APERTURE
CARD

Docket # 50-244
Control # 8109290350
Date 9-22-81 of Document:
REGULATORY DOCKET FILE

SEPARATION GROUP-B

REVISIONS				
NO	MADE	CHKD	APPROVALS	DATE
9-5-75	CONSTRUCTION		GRG	
	LIMITED CONSTRUCTION: AS NOTED			
7-10-75	PRELIMINARY NOT FOR CONSTRUCTION		GRG	
	BIDDING PURPOSES			
DATE RELEASED FOR ENGR.				
ROCHESTER GAS & ELECTRIC CORPORATION				
GINNA STATION				
ELECTRICAL				
ELEMENTARY WIRING DIAGRAM				
MOTOR DRIVEN SAFWP D				
GILBERT ASSOCIATES, INC.				
ENGINEERS AND CONSULTANTS				
READING PA.				
DRAFTING				
ENGINEER APPROVALS				
MADE				
CHECKED				
ARCHITECTURAL				
CIVIL				
STRUCTURAL				
ELECTRICAL				
MECHANICAL				
ENVIRONMENTAL				
NUCLEAR				
SCALE				
W.O.				
04 4594 B-281-123 4				
DRAWING NUMBER REV				

1/4" = 1'-0"

EWD MOTOR DRIVEN SAFWP D