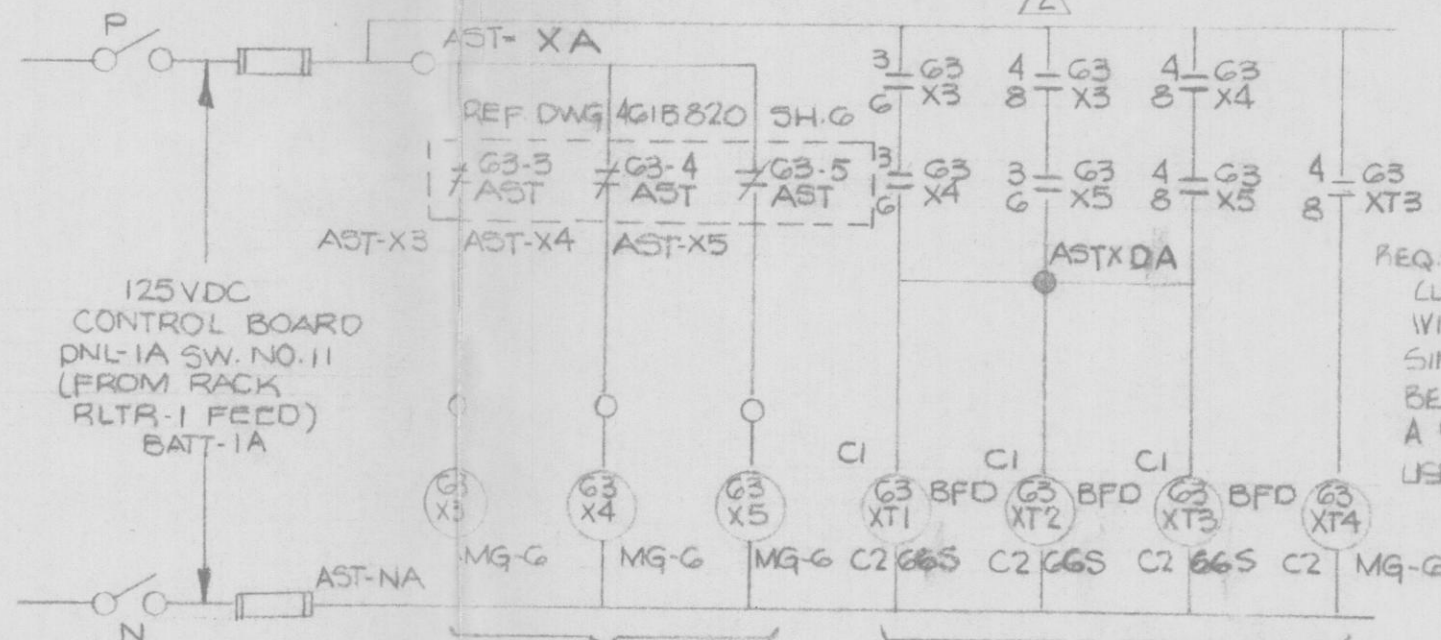
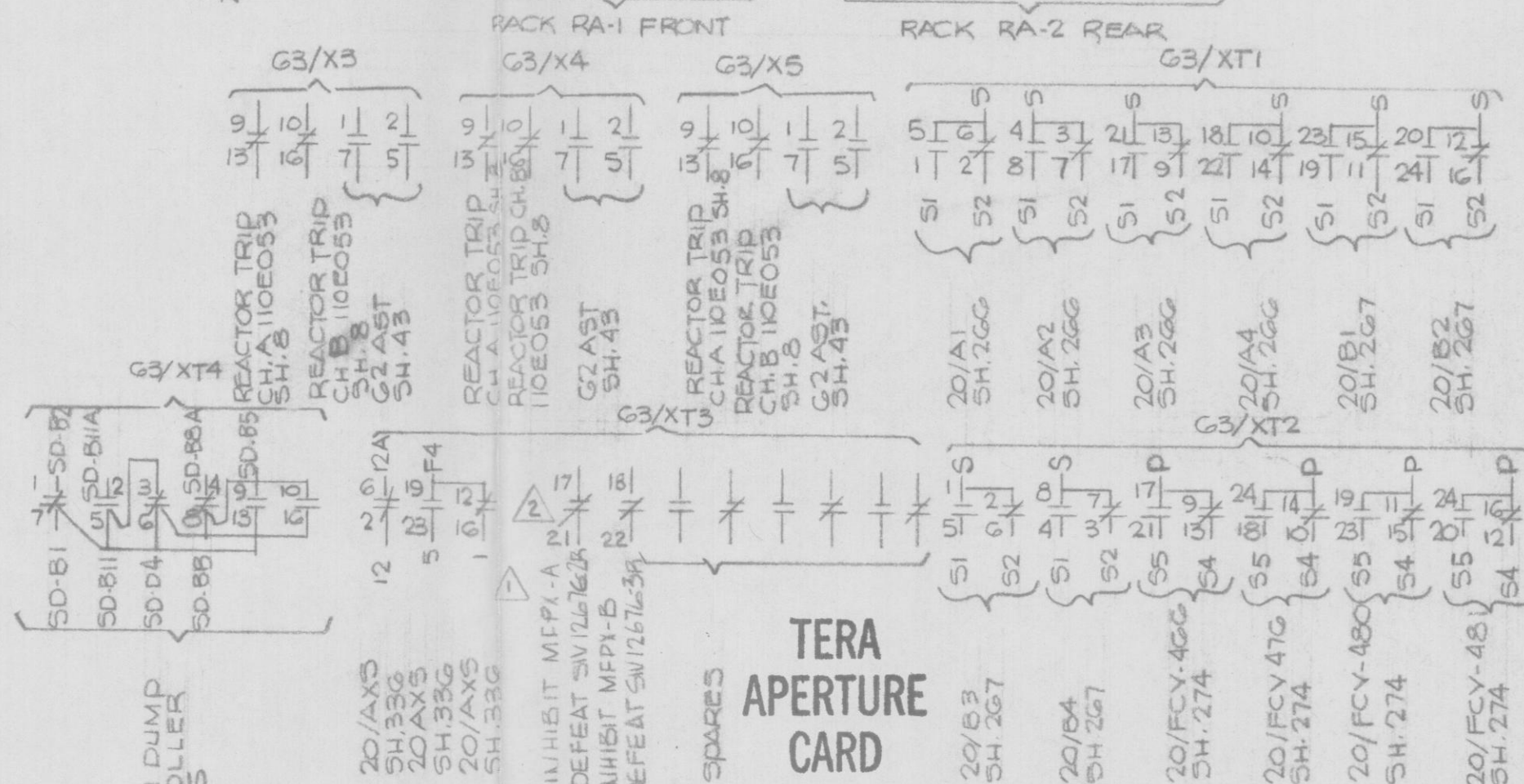


8 AST(+) ET(+) FDX-1
 4 FDX 3 FDX 2 FDX
 1 AST 1 ET-1 FDX-2
 20AST 20ET SPARE
 TRIP TRIP
 SH.115 SH.115



REQ: 63XT3/TD CONTACT
 CLOSED WHEN ON LINE
 WITH TD ON OPENING.
 SINCE 63XT3/TD SHOULD
 BE DE-ENERGIZED THEN
 A "b" CONTACT WILL BE
 USED.



TEAM DUMP
 CONTROLLER
 335

| | |
|----------------------------------|--|
| CONSTRUCTION | |
| LIMITED CONSTRUCTION: AS NOTED | |
| PRELIMINARY NOT FOR CONSTRUCTION | |
| BIDDING PURPOSES | |
| FOR INFORMATION ONLY | |
| RELEASED FOR | |

REGULATORY DOCKET FILE COPY

| | | | | | |
|----------|--------------|-------------|-------------|-------------|-------------|
| REV. | FCR 3025-2 | NJA 7-14-81 | Rm 7-14-81 | gdl 7/17/81 | RWD 7/14/81 |
| ORIGINAL | D.H. 5/29/81 | Rm 5-29-81 | Rm 8/17/81 | Rm 9/22/81 | Rm 9/23/81 |
| DRAWN BY | CK'D | RESP. ENGR. | ENGR. MANG. | DATE | |

O=OUTGOING TERMINAL POINT FROM AUX. RELAY RACK
 - G3-3 AST, G3-4 AST G3-5 AST CLOSE ON AUTO STOP
 OIL PRESS, DECREASE TO 45 PSIG.

THIS DWG. SUPERCEDES WESTINGHOUSE DWG. NO. 499B425-114

| | | | | | | |
|--|--------|--------------------------------|-------|----------|------------|---------|
| ROBERT EMMETT GINNA NUCLEAR POWER STATION UNIT NO.1 ELEMENTARY WIRING DIAGRAM TURBINE TRIP AUX. RELAY | | DATE | SCALE | APPROVED | FOLDER NO. | JOB NO. |
| DRAWN | TRACED | CHECKED | ENG. | | | |
| ROCHESTER GAS & ELECTRIC CORP. ROCHESTER, NEW YORK | | No. 10905-114 ENG'R DEPT | | | | |