

REGULATOR INFORMATION DISTRIBUTION SYSTEM (RIDS)

ACCESSION NBR: 8104280545 DOC. DATE: 81/04/23 NOTARIZED: NO DOCKET #
 FACIL: 50-244 Robert Emmet Ginna Nuclear Plant, Unit 1, Rochester G 05000244
 AUTH. NAME: AUTHOR AFFILIATION
 MAIER, J. E. Rochester Gas & Electric Corp.
 RECIP. NAME: RECIPIENT AFFILIATION
 CRUTCHFIELD, D. Operating Reactors Branch 5

SUBJECT: Forwards QA program info per 810224 request. Discusses transfer of welding & nondestructive exam engineer responsibilities & deletion of Revision 7, Figure 4.2-2, of util QA program.

DISTRIBUTION CODE: Q002S COPIES RECEIVED: LTR 1 ENCL 1 SIZE: 6
 TITLE: Quality Assurance Dist. for Amdt to Report

NOTES: 1 copy: SEP Sect. Ldr.

05000244

ACTION:	RECIPIENT ID CODE/NAME		COPIES		RECIPIENT ID CODE/NAME		COPIES	
			LTTR	ENCL			LTTR	ENCL
	SNÄIDER, R.		1	1				
INTERNAL:	ASLAP	09	1	1	ASLB		1	0
	NRC PDR	03	1	1	QA BR	04	2	1
	RES	10	1	1	<u>SUBJ FILE</u>	01	2	2
EXTERNAL:	ACRS	11	16	16	LPDR		1	1

APR 29 1981

TOTAL NUMBER OF COPIES REQUIRED: LTTR

27

26 ENCL

25

24

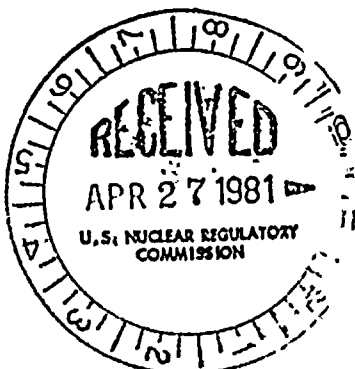
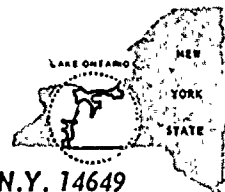
✓



ROCHESTER GAS AND ELECTRIC CORPORATION • 89 EAST AVENUE, ROCHESTER, N.Y. 14649

JOHN E. MAIER
VICE PRESIDENT

TELEPHONE
AREA CODE 716 546-2700



April 23, 1981

Director of Nuclear Regulation
Attn: Mr. Dennis M. Crutchfield, Chief
Operating Reactors Branch #5
U.S. Nuclear Regulatory Commission
Washington, DC 20555

Subject: Quality Assurance Program
R.E. Ginna Nuclear Power Plant
Docket No. 50-244

Dear Mr. Crutchfield:

In response to your request for additional information
dated February 24, 1981, the enclosed response is provided.

Very truly yours,

John E. Maier
John E. Maier

Enclosure

Q002
S
111

8104280545

P



260.1 Transferring the responsibilities of the Welding and
NDE Engineer from the Quality Assurance Group to General
Maintenance Group

After careful reconsideration of the concerns regarding the impact of the Welding and NDE Engineer reassignment we have again concluded that the reassignment enhances the Ginna Quality Assurance Program without impacting necessary independence from cost and schedule activities.

This conclusion is based upon the role of General Maintenance Department in Ginna maintenance activities. General Maintenance has no direct responsibility for safety-related maintenance activities at Ginna Station. General Maintenance functions primarily as a source of corporate support services for the various production departments performing maintenance. In addition, they provide limited non-safety-related construction and building maintenance services. The Ginna Station Superintendent retains direct responsibility for the control of activities associated with maintenance, modifications and related independent quality verifications at Ginna. A shift of the Welding and NDE Engineer from the Quality Assurance Group to General Maintenance within the Engineering Department does not impact the Ginna Station responsibilities.



THE UNITED STATES OF AMERICA

DEPARTMENT OF JUSTICE

WASHINGTON, D. C.

OFFICE OF THE ATTORNEY GENERAL

WASHINGTON, D. C.

WASHINGTON, D. C.

WASHINGTON, D. C.

WASHINGTON, D. C.

WASHINGTON, D. C.

WASHINGTON, D. C.

WASHINGTON, D. C.

WASHINGTON, D. C.

WASHINGTON, D. C.

WASHINGTON, D. C.

WASHINGTON, D. C.

WASHINGTON, D. C.

WASHINGTON, D. C.

WASHINGTON, D. C.

WASHINGTON, D. C.

WASHINGTON, D. C.

WASHINGTON, D. C.

WASHINGTON, D. C.

WASHINGTON, D. C.

WASHINGTON, D. C.

WASHINGTON, D. C.

WASHINGTON, D. C.

During Ginna outage periods the Level III functions performed by Welding and NDE Engineers and related control of the NDE technicians are shifted to Ginna Station under the functional control of the Ginna Station QC Engineer. This is similar to the functional control exercised by the Ginna Station QC Engineer over contracted examination agencies. Therefore, control of nondestructive examination activities at Ginna Station is at all times by a designated independent organization.

Forming the new Materials Engineering Group, which has no direct responsibility for cost and schedule, has enhanced the Ginna quality assurance program as well as other corporate programs. This has been accomplished through the refinement of existing examination programs while optimizing use of materials-oriented personnel to establish testing and analysis capabilities. In addition, previous interface problems have been corrected with the consolidation of the Welding and NDE Engineer into the same organization as the technicians who are involved in conducting welder training and nondestructive examinations.

Revision 7 deleted Figure IV.2-2 "Rochester Gas & Electric Corporation QA Organization" from the QA Program description

As in previous revisions, the Quality Assurance Organization with its reporting relationship is shown in the Corporate Organization Chart Figure IV.2-1. A description of the responsibilities of the Corporation's Manager Quality Assurance and assigned staff is described on pages IV-5 and IV-6 with appropriate reference to Figure IV.2-1. Elimination of two of the four functions (i.e. Welding and NDE Engineer and Quality Assurance Engineer Construction having Sterling Project Responsibility) resulted in a Figure IV.2-2 which was basically redundant with the organization as depicted on Figure IV.2-1. The responsibilities of the Quality Assurance Organization, as pertaining to review, audit and source inspection continues to be described in pages IV-5 and IV-6 in sufficient detail.

In addition, Supplement IV provides a description, on pages IV-7 and IV-8, of the Ginna Station Quality Control Engineer and General Maintenance Quality Control Coordinator responsibilities associated with their assigned quality assurance functions. These functions continue to be shown on Figures IV.2-1 IV.2-3 and IV.2-4.

$\frac{d}{dt} \left(\frac{\partial L}{\partial \dot{x}} \right) = \frac{\partial L}{\partial x}$

[illegible][illegible]

260.3

Discuss the Significance of Deleting the "Engineer"
Block Under the "Quality Control Engineer" Block from
Figure IV.2-3

The deletion, which occurred during changes to incorporate the positions of Shift Technical Advisor and Technical Assistant for Operational Assessment is being remedied by the re-insertion of the "Engineer(s)" block as shown on the attached Figure. The attached Figure IV.2-3 is to replace that which was provided with the November submittal.



THE UNITED STATES OF AMERICA

DEPARTMENT OF THE INTERIOR

BUREAU OF LAND MANAGEMENT

WASHINGTON, D. C. 20250

OFFICE OF THE ASSISTANT ATTORNEY GENERAL

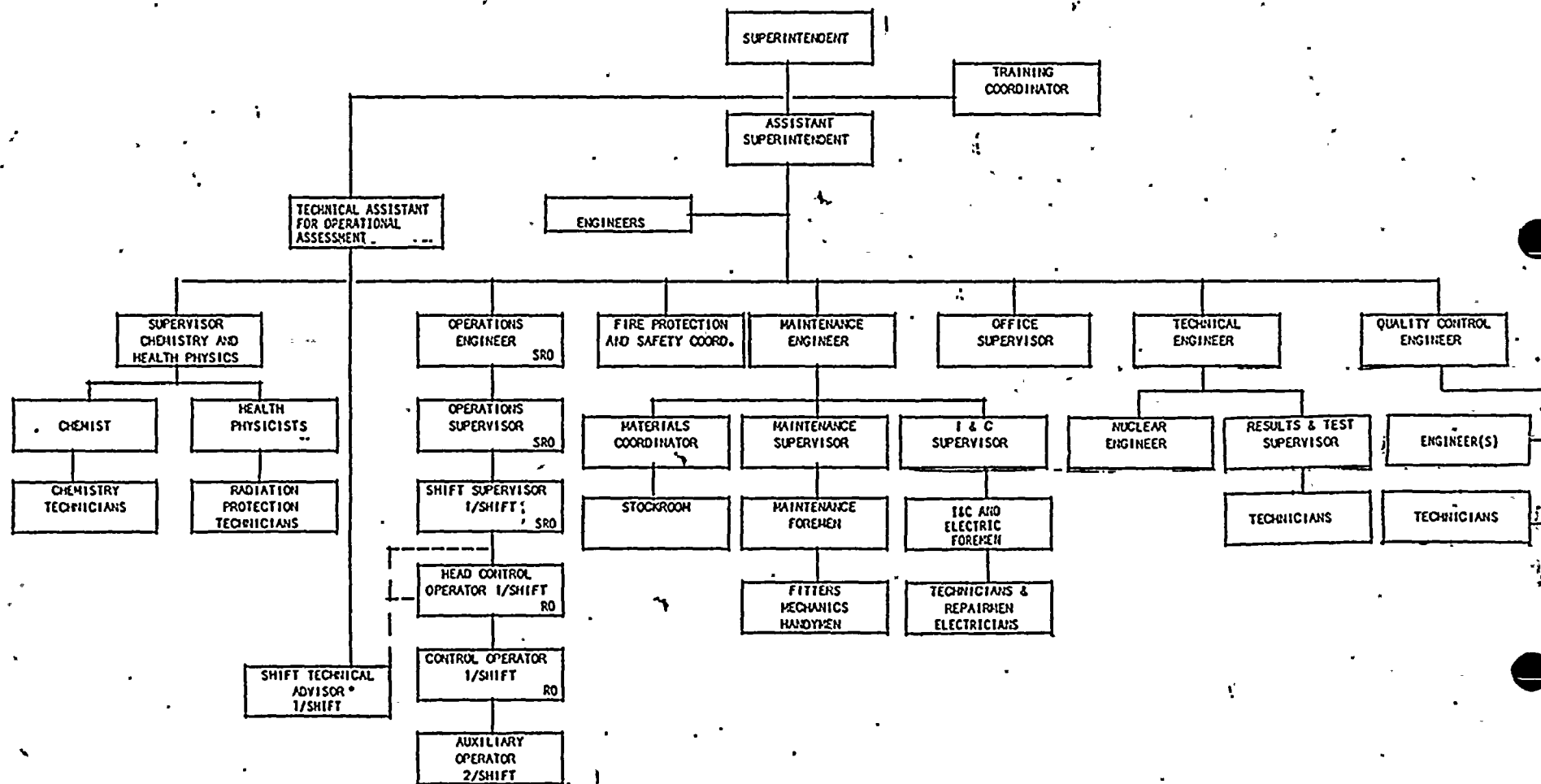
WASHINGTON, D. C. 20540

REPLY TO: BUREAU OF LAND MANAGEMENT, WASHINGTON, D. C. 20250

ATTENTION: ATTORNEY GENERAL

TELEPHONE: (202) 725-1234

TELETYPE: (202) 725-1234

ROCHESTER GAS AND ELECTRIC CORPORATION
GINNA STATION ORGANIZATION

REPORTING

COMMUNICATION

*STA MUST BE EITHER SRO OR HAVE BS DEGREE.
STA IS REQUIRED ONLY DURING POWER OPERATION.

Figure IV.2-3
April 1981