

REGULATORY INFORMATION DISTRIBUTION SYSTEM (RIDS)

ACCESSION NBR:8203250551 DOC.DATE: 82/03/23 NOTARIZED: NO DOCKET #
 FACIL:50-244 Robert Emmet Ginna Nuclear Plant, Unit 1, Rochester G 05000244
 AUTH.NAME AUTHOR AFFILIATION
 MAIER,J.E. Rochester Gas & Electric Corp.
 RECIP.NAME RECIPIENT AFFILIATION
 CRUTCHFIELD,D. Operating Reactors Branch 5

SUBJECT: Requests approval of addl efforts re removal of steam generator tubes from B steam generator. List of specific degraded tubes to be removed encl.

DISTRIBUTION CODE: A001S COPIES RECEIVED: LTR 1 ENCL 1 SIZE: 2
 TITLE: General Distribution for after Issuance of Operating License

NOTES: 1 copy: SEP Sect. Ldr.

05000244

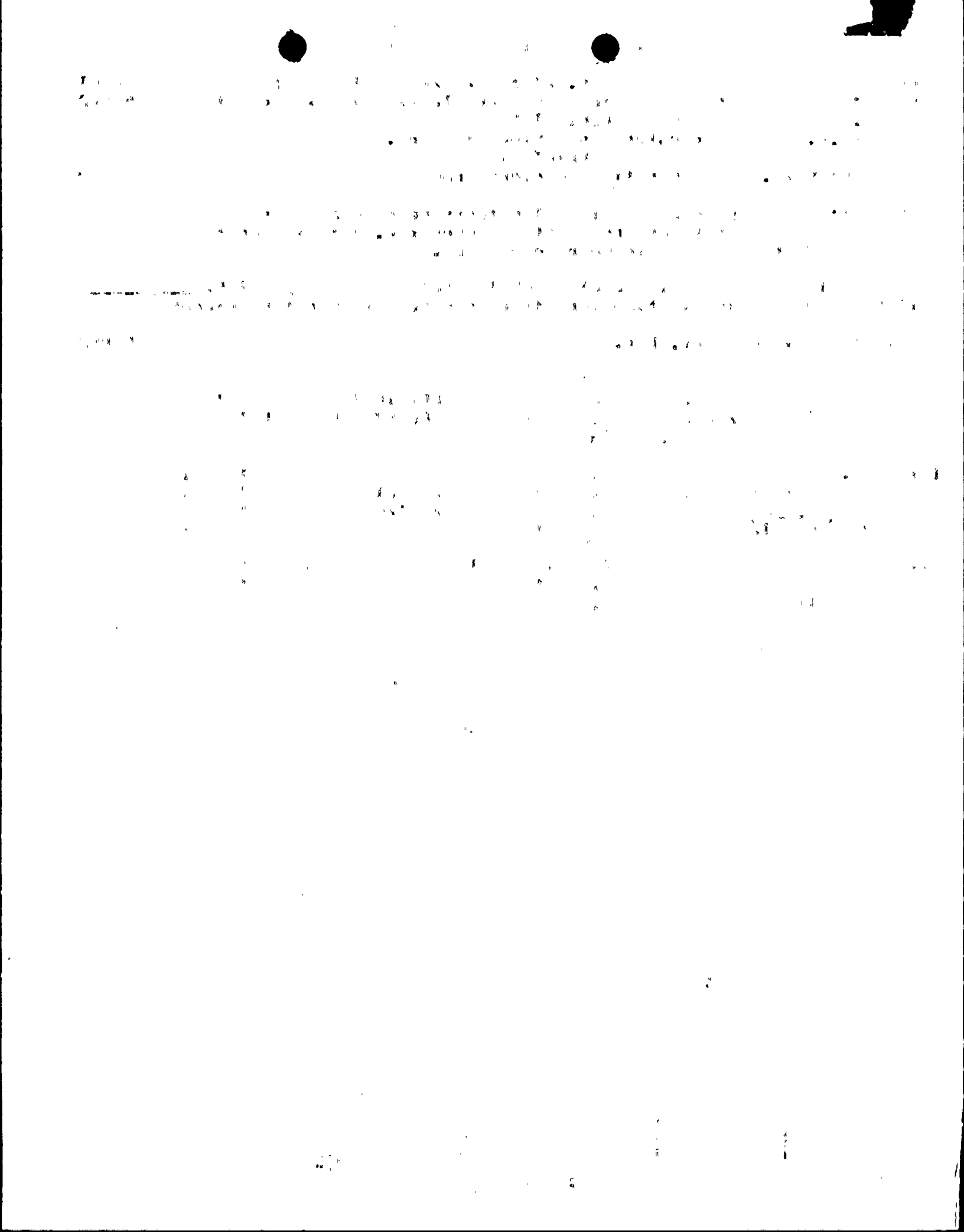
RECIPIENT			COPIES		RECIPIENT			COPIES	
ID CODE/NAME			LTTR	ENCL	ID CODE/NAME			LTTR	ENCL
ORB #5 BC	01		13	13					
INTERNAL: ELD			1	0	IE	06		1	1
NRR/DHFS DEPY08			1	1	NRR/DL DIR			1	1
NRR/DI/ORAB			1	0	NRR/DSI/RAB			1	1
REG FILE	04		1	1	RGN1			1	1
EXTERNAL: ACRS	09		10	10	LPDR	.03		1	1
NRC PDR	02		1	1	NSIC	05		1	1
NTIS			1	1					

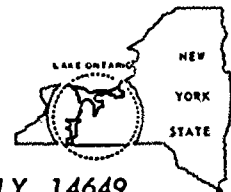
TOTAL NUMBER OF COPIES REQUIRED: LTTR

36
35

ENCL

34
33





ROCHESTER GAS AND ELECTRIC CORPORATION • 89 EAST AVENUE, ROCHESTER, N.Y. 14649

JOHN E. MAIER
Vice President

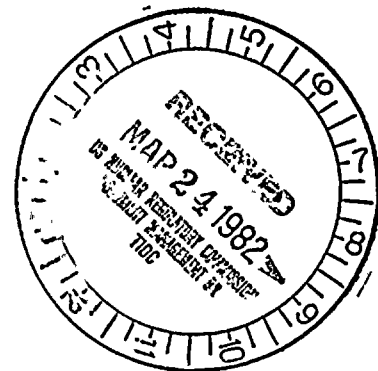
TELEPHONE
AREA CODE 716 546-2700

March 23, 1982

Director of Nuclear Reactor Regulation
Attention: Mr. Dennis M. Crutchfield,
Chief
Operating Reactors Branch
No. 5

U. S. Nuclear Regulatory Commission
Washington, D.C. 20555

Subject: Steam Generator Repair
R. E. Ginna Nuclear Power Plant
Docket No. 50-244



Dear Mr. Crutchfield:

This letter updates the status of our steam generator repair activities and requests your approval for addition efforts. Following receipt of your approval on March 1, we proceeded to remove steam generator tubes from the Ginna B steam generator. Based on the results of examination and on the results of analyses and tests which have been conducted, we propose to remove all tubing sections which are structurally degraded. Sections to be removed extend from immediately above the tube sheet to just below the first support plate. The specific tubes with sections to be removed are listed on the attachment to this letter. It may be necessary to remove additional tubes in order to gain access to the tubes requiring removal. We expect to remove all tube sections through access ports which have been placed in the steam generator shell immediately above the tube sheet. Should our plans change, we will inform you.

Very truly yours,

John E. Maier
John E. Maier

A001
1/1

Attachment (1)

/sk

8203250551 820323
PDR ADDCK 05000244
P PDR

ATTACHMENT

SECTIONS WILL BE REMOVED FROM THE FOLLOWING TUBES:

R8C92
R11C91
R12C91
R14C90
R15C90

R42C55
R43C53
R43C54
R43C55
R43C56
R43C57
R43C58
R43C59
R43C60
R43C61

R44C52
R44C53
R44C54
R44C55
R44C56
R44C57
R44C58
R45C53
R45C54

