

Attachment A

1. Replace page 6.1-1 with the enclosed replacement 6.1-1.
2. Replace pages 6.2-1 through 6.2-3 with the enclosed replacement pages 6.2-1 through 6.2-6.
3. Replace page 6.5-2 with the enclosed replacement page 6.5-2.

Handwritten signature or text at the bottom right corner.

6.0 ADMINISTRATIVE CONTROLS

6.1 RESPONSIBILITY

- 6.1.1 The Station Superintendent shall be responsible for overall facility operation and shall delegate in writing the succession to this responsibility during his absence.

6.2 ORGANIZATION

OFFSITE

- 6.2.1 The offsite organization for facility management and technical support shall be as shown on Figure 6.2-1.

FACILITY STAFF

- 6.2.2 The Facility organization shall be as shown on Figures 6.2-2, 6.2-3, 6.2-4, & 6.2-5 and:
- a. Each on duty shift shall be composed of at least the minimum shift crew composition shown in Figures 6.2-3, 6.2-4, and 6.2-5.
 - b. At least one licensed Operator shall be in the control room when fuel is in the reactor.

R. E. GINNA NUCLEAR POWER PLANT MANAGEMENT ORGANIZATION CHART

— Lines of supervision and administration
- - - Lines of communication

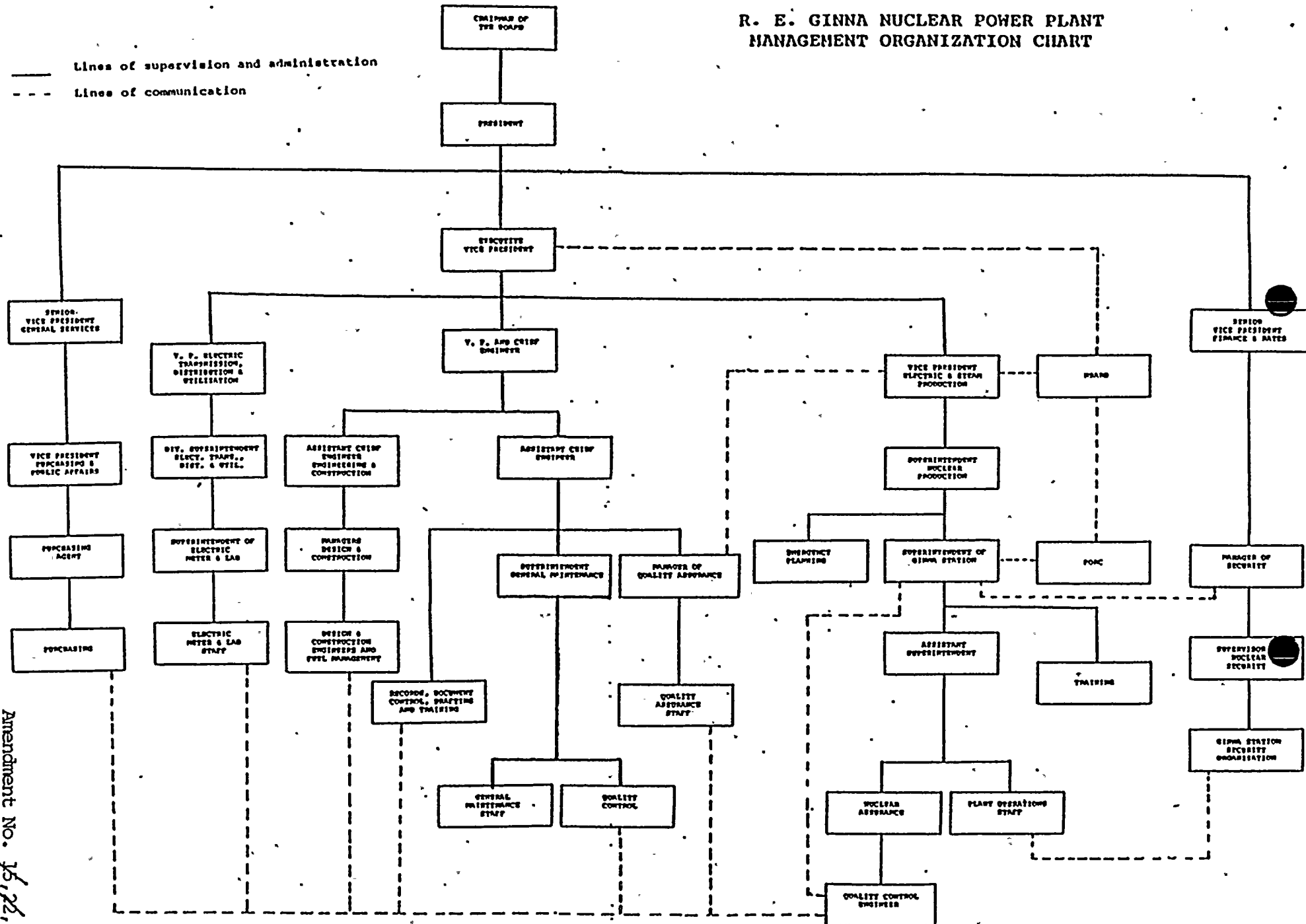


Figure 6.2-1

6.2-2

Amendment No. 16, 17, 18, 19, 20
PROPOSED

ROCHESTER GAS AND ELECTRIC CORPORATION

R. E. GINNA STATION

ORGANIZATION

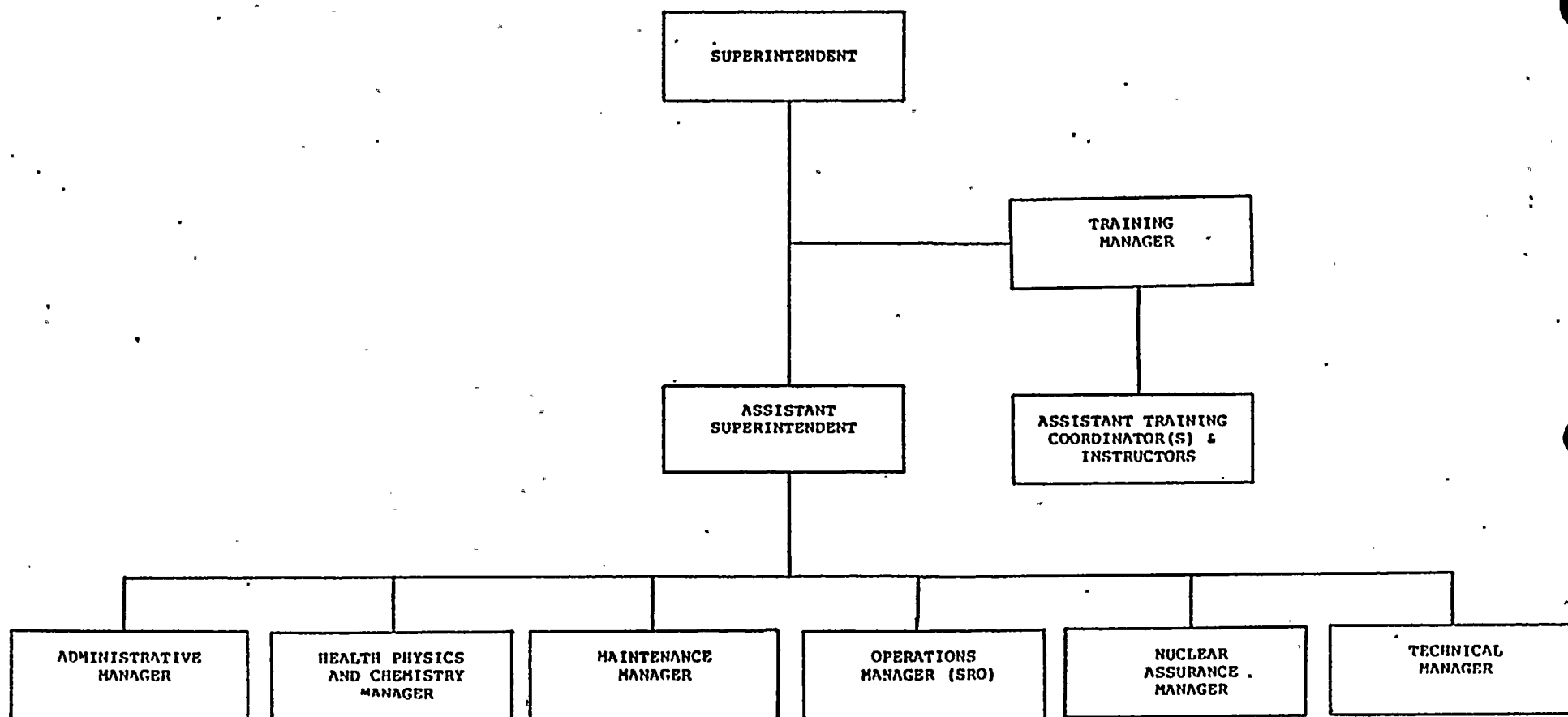


Figure 6.2-2

6.2-3

PROPOSED

R. E. GINNA STATION

ADMINISTRATIVE AND HEALTH PHYSICS & CHEMISTRY SECTIONS

GROUP ORGANIZATIONS

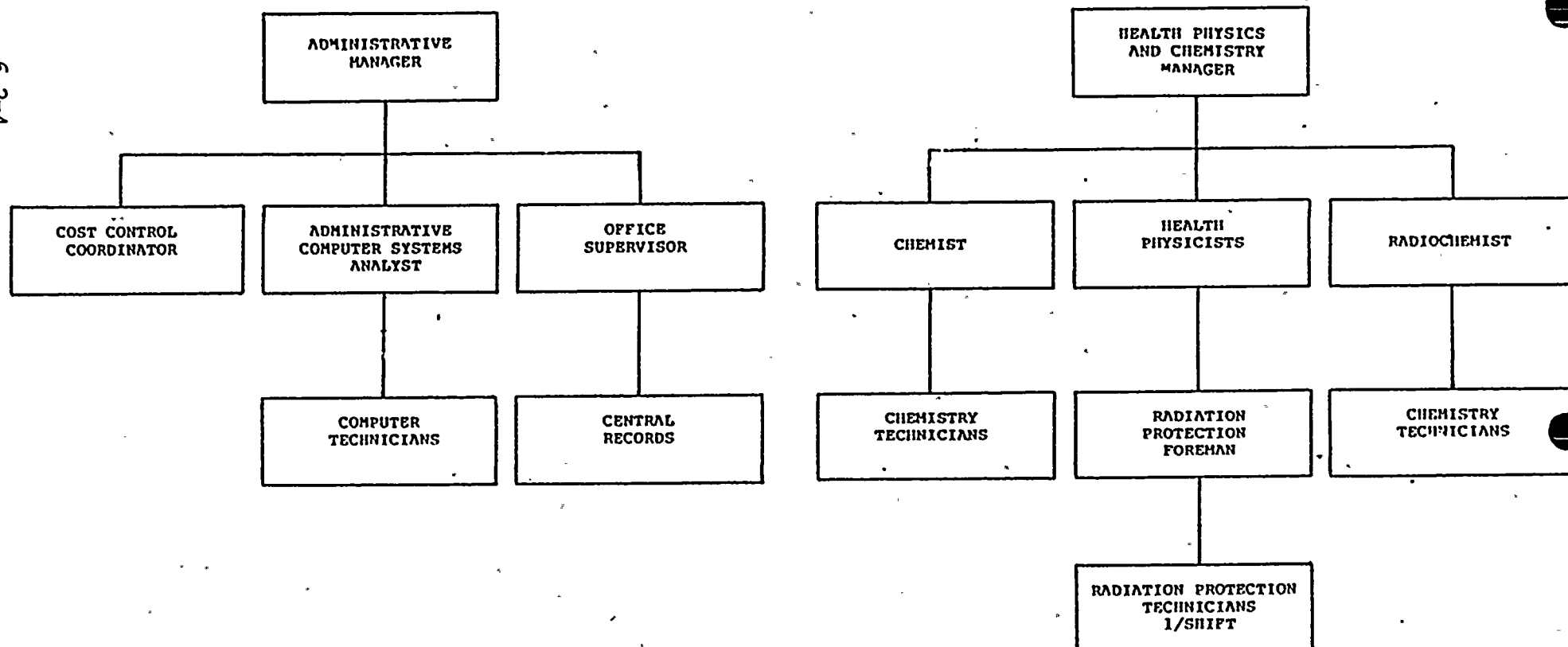
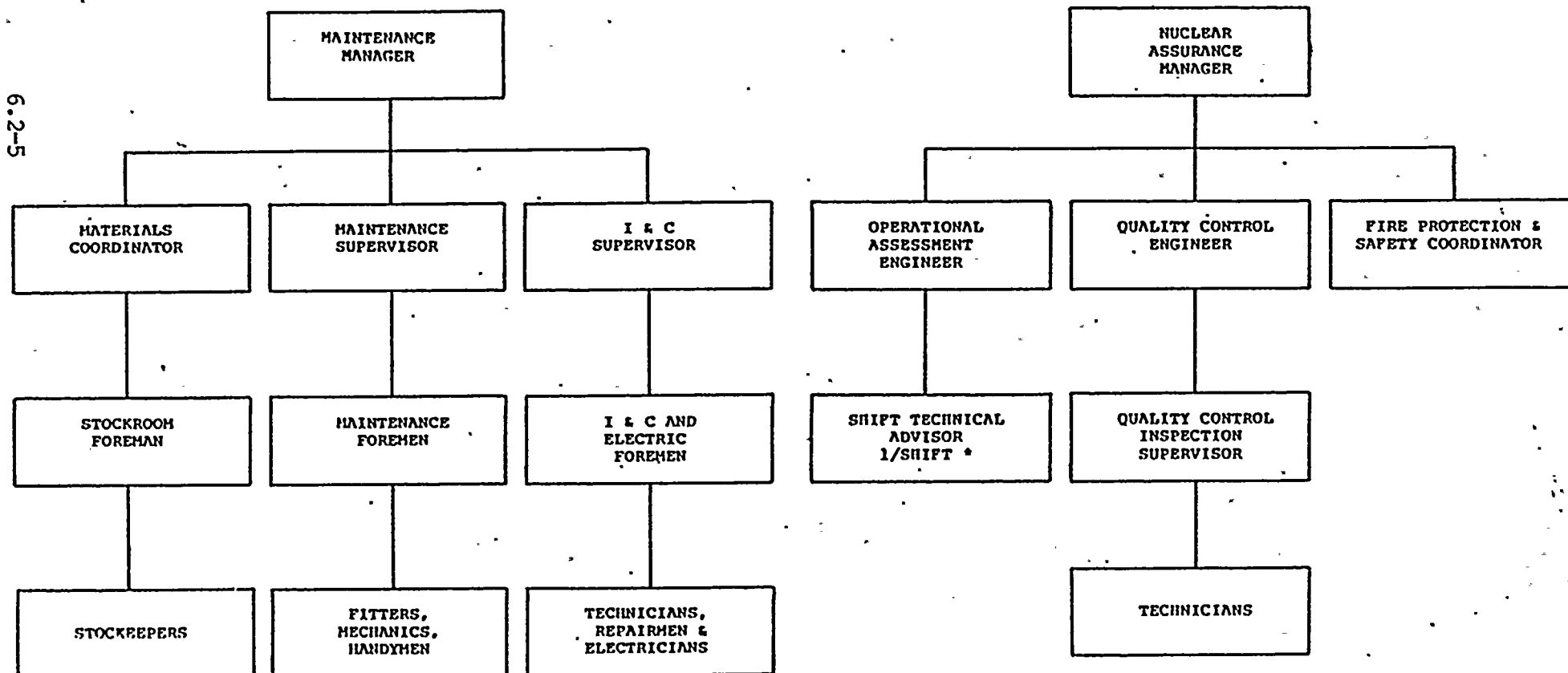


Figure 6.2-3

R. E. GINNA STATION
MAINTENANCE AND NUCLEAR ASSURANCE SECTIONS
GROUP ORGANIZATIONS



* When RCS average temperature > 200° F

Figure 6.2-4

R. E. GINNA STATION
OPERATIONS AND TECHNICAL SECTIONS
GROUP ORGANIZATIONS

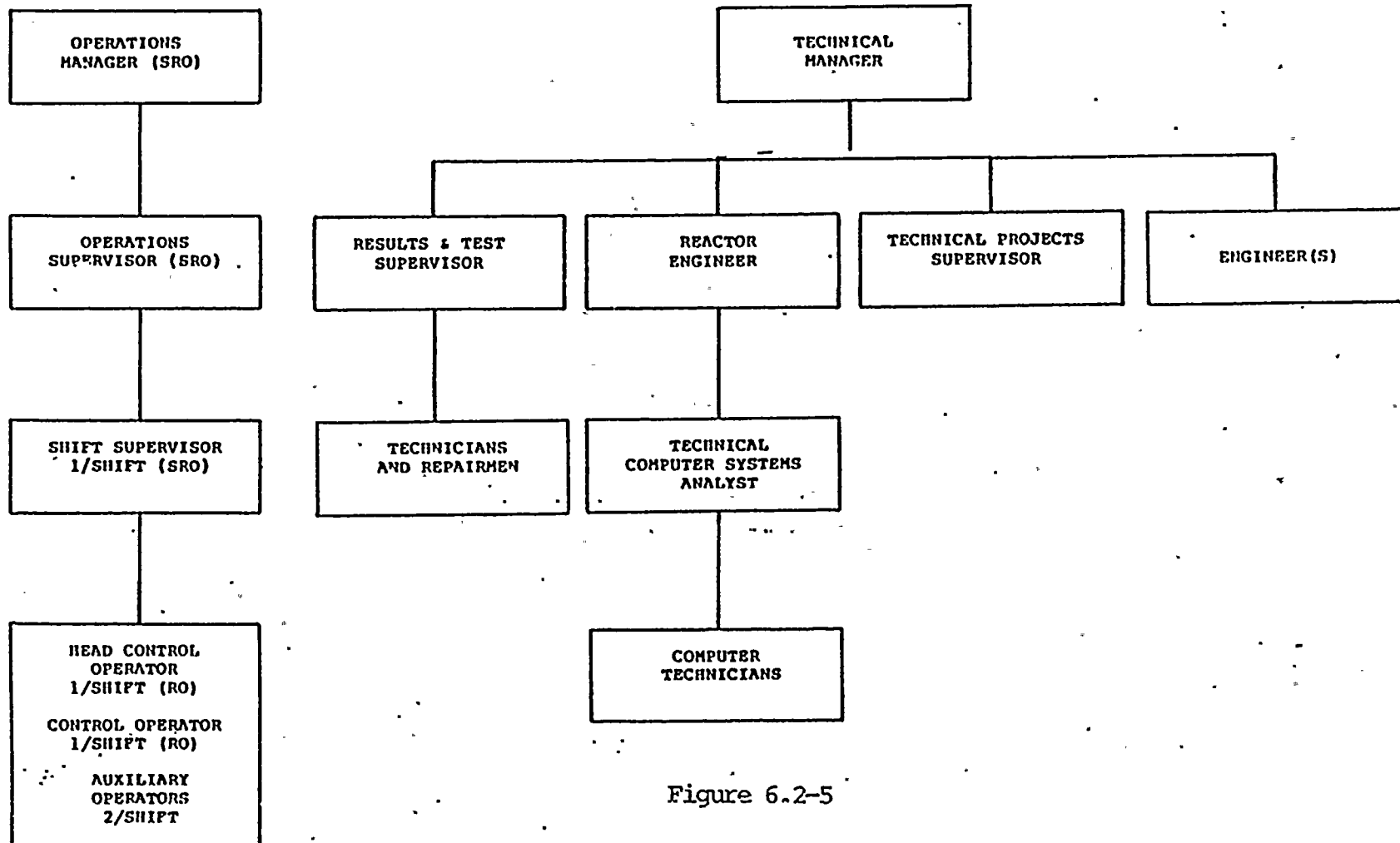


Figure 6.2-5

6.2-6

PROPOSED

COMPOSITION

6.5.1.2 The PORC shall be composed of the;

Chairman:	Superintendent
Member:	Assistant Superintendent
Member:	Operations Manager
Member:	Maintenance Manager
Member:	Instrument & Control Supervisor
Member:	Technical Manager
Member:	Results & Test Supervisor
Member:	Reactor Engineer
Member:	Health Physics and Chemistry Manager
Member:	Nuclear Assurance Manager
Member:	Quality Control Engineer

ALTERNATES

6.5.1.3 Alternate members shall be designated by name, in writing, by the Chairman.

MEETING FREQUENCY

6.5.1.4 The PORC shall meet at least once per calendar month and as convened by the PORC Chairman.

QUORUM

6.5.1.5 A quorum of the PORC shall consist of the Chairman and four members including alternates. No more than two shall be alternates.

Attachment B

Over the past twelve years of operating the R. E. Ginna nuclear plant, additional staff functions have been added to the plant organization. These functions include a Cost Control Coordinator, an Administrative Computer Systems Analyst, a Technical Computer Systems Analyst, a Technical Projects Supervisor, a Technical Assistant for Operational Assessment, a Fire Protection & Safety Coordinator, and an Emergency Planning group. During each of these staff enhancements, the reporting chain has typically been as a direct report to the Superintendent/Assistant Superintendent. This resulted in approximately twelve organizational sections reporting to the Superintendent/Assistant Superintendent.

As a result of these additions, it became evident to corporate and plant management, that a reorganization of these staff functions were required to improve the management of the plant.

The proposed Technical Specification change identified in Attachment A, reorganizes the staff into major functional sections. These functional sections include an Administrative section, a Health Physics & Chemistry section, a Maintenance section, an Operations section, a Nuclear Assurance section, and a Technical section. The two new sections, Administrative and Nuclear Assurance are discussed below.

Reporting to the Administrative Manager will be the functions of Cost Control Coordinator, Administrative Computer Systems Analyst, and the function of the Office Supervisor. This change will allow for these support functions to form a cohesive support

organization assisting in the plant administrative controls implementation.

Reporting to the Nuclear Assurance Manager will be the Operational Assessment Engineer (formerly the Technical Assistant for Operational Assessment), the Quality Control Engineer, and the Fire Protection & Safety Coordinator. Also within this section the function of the Quality Control Inspection Supervisor, reporting to the Quality Control Engineer, will be established to coordinate the inspection activities of quality control on plant and project jobs. As in the past, the Quality Control Engineer will continue to report to the Superintendent regarding station activities affecting quality and that these activities are in accordance with approved drawings, specifications, and procedures. Since the independence and responsibilities of the Quality Control Engineer and the corresponding reporting relationships remain unaltered, the revised station organization will not diminish or weaken the effectiveness of the Quality Control Organization described in the Technical Supplement Accompanying Application For A Full Term Operating License. This change will consolidate those staff functions concerned with the assurance of implementing the operational, quality and regulatory requirements of the administrative controls into an independent section. Along with this change, the Nuclear Assurance Manager will become a member of the PORC along with the Quality Control Engineer remaining on the committee. This section will have communications to the offsite Quality Assurance organization as well as other organizations with quality functions within

the Management Organization.

Other changes include the positions of Radiation Protection Foreman and Radiochemist in the Health Physics & Chemistry section, the change in title of the Nuclear Engineer to Reactor Engineer, the addition of the Technical Projects Supervisor and Technical Computer Systems Analyst in the Technical section, and the renaming of the Supervisor of Health Physics and Chemistry to the Health Physics and Chemistry Manager, the Maintenance Engineer to the Maintenance Manager, the Operations Engineer to Operations Manager, the Technical Engineer to Technical Manager, and the Training Coordinator to Training Manager.

These organization changes will improve the management of the plant and will not affect the safety of the plant nor the safety, health and welfare of the general public. Therefore Rochester Gas and Electric requests a Technical Specification change to allow a reorganization of the plant staff.

