

6.0 ADMINISTRATIVE CONTROLS

6.1 RESPONSIBILITY

6.1.1 The Superintendent-Ginna Production shall be responsible for overall on-site Ginna Station operation and shall delegate in writing the succession to this responsibility during his absence.

1. The first part of the document is a list of names and addresses of the members of the committee.

2. The second part of the document is a list of names and addresses of the members of the committee.

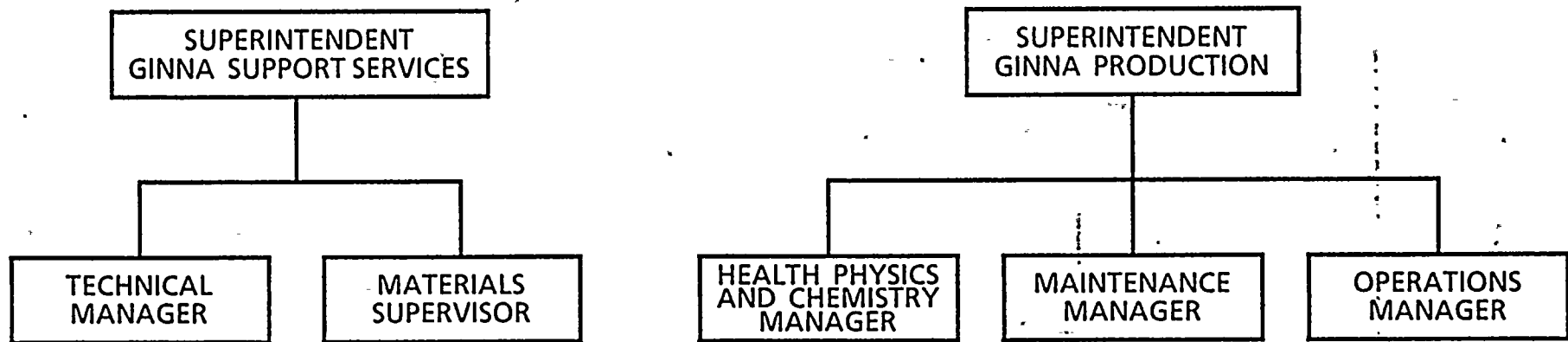
- LINES OF SUPERVISION AND ADMINISTRATION
- LINES OF COMMUNICATION



REV. 4



ROCHESTER GAS AND ELECTRIC CORPORATION GINNA STATION ORGANIZATION



6.2-4

PROPOSED

Figure 6.2-2

**R. E. GINNA STATION
ADMINISTRATIVE AND HEALTH PHYSICS & CHEMISTRY SECTION
GROUP ORGANIZATIONS**

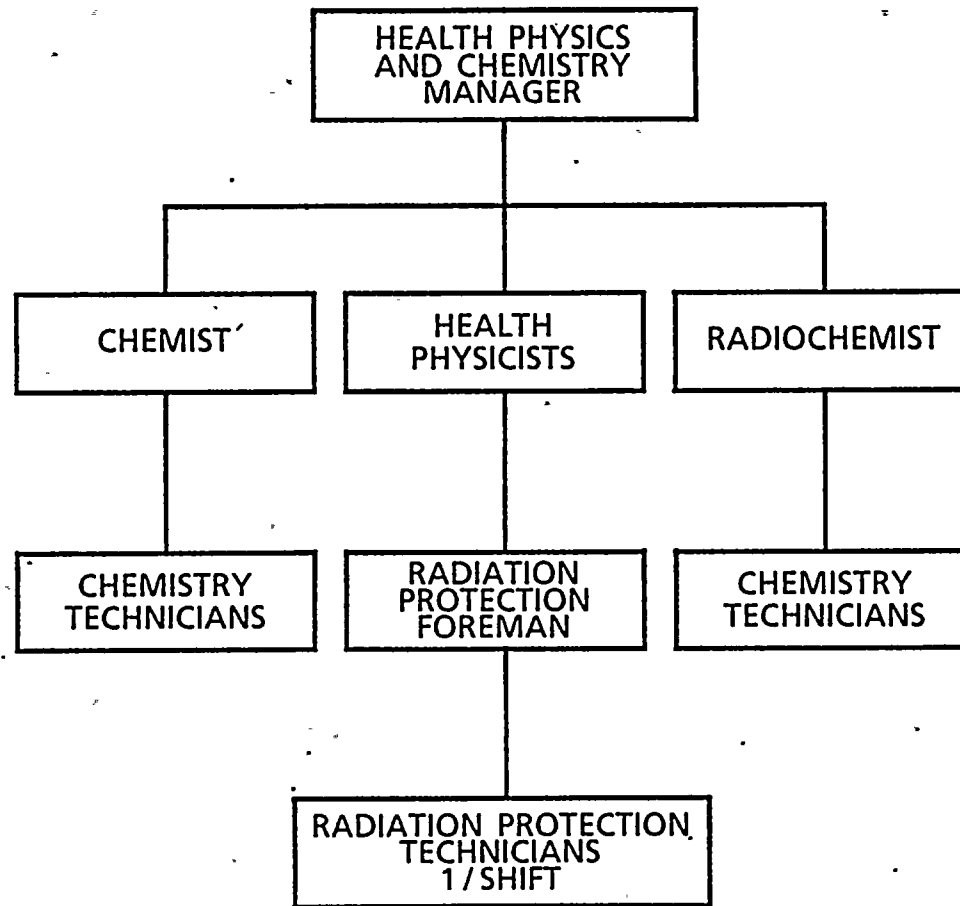


Figure 6.2-3

**R. E. GINNA STATION
MAINTENANCE AND NUCLEAR ASSURANCE SECTION
GROUP ORGANIZATIONS**

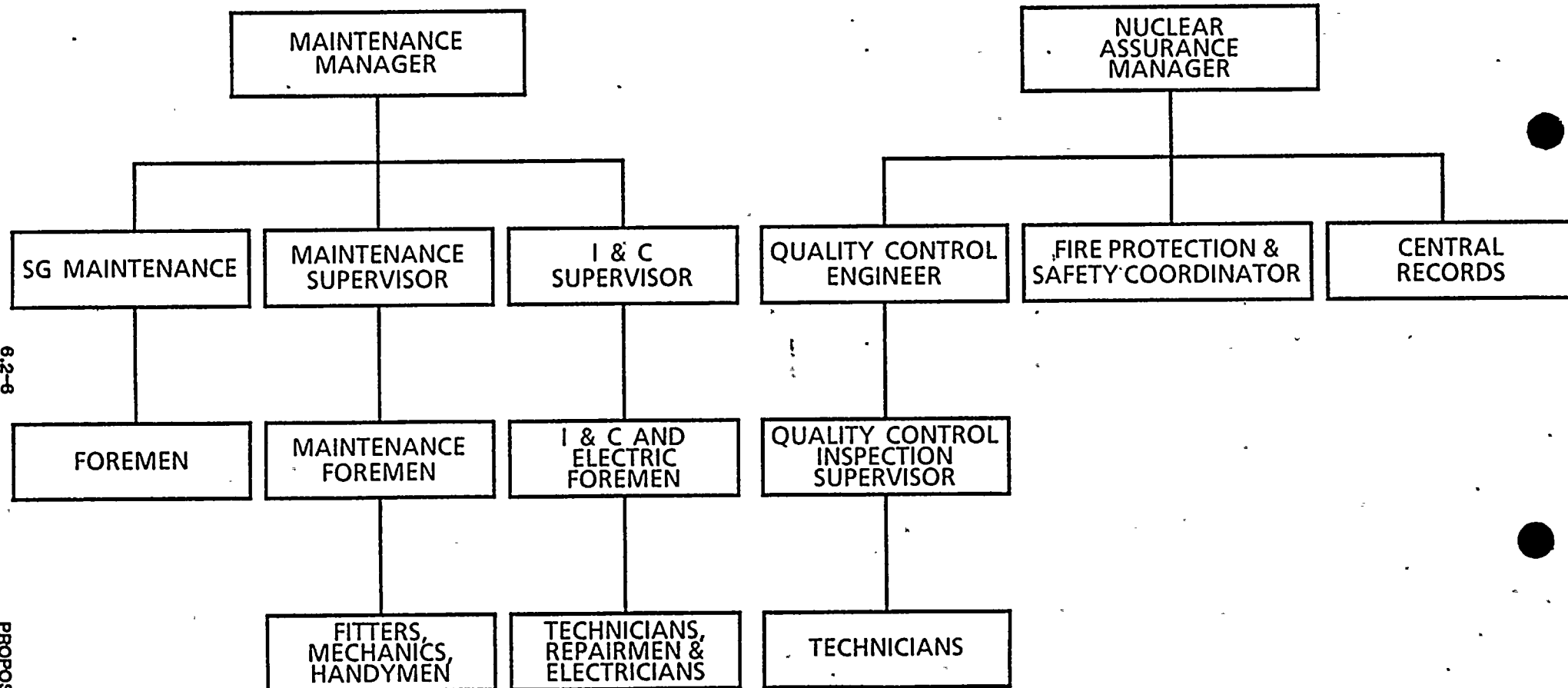
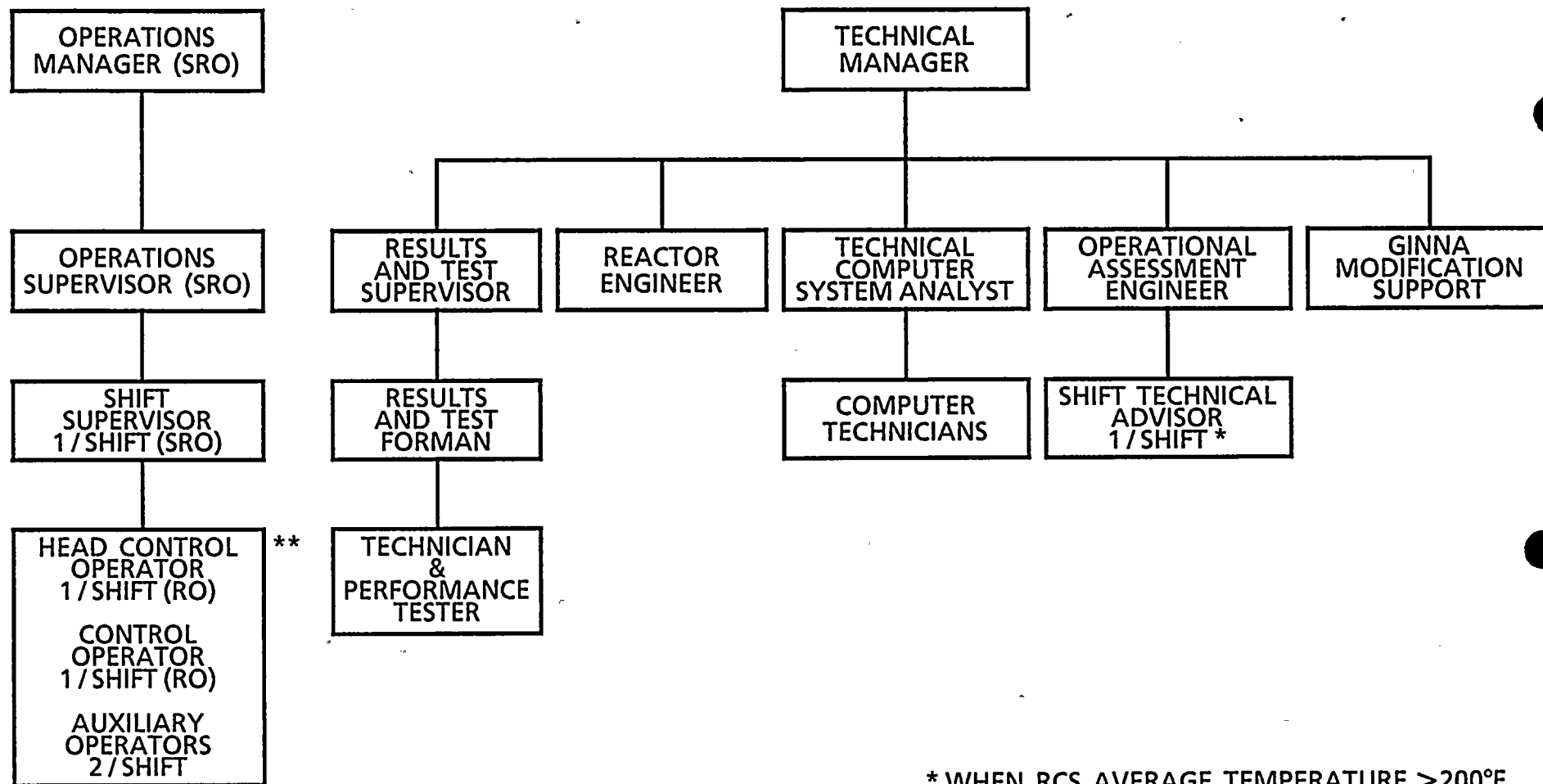


Figure 6.2-4

R. E. GINNA STATION OPERATIONS AND TECHNICAL SECTION GROUP ORGANIZATIONS



* WHEN RCS AVERAGE TEMPERATURE >200°F

Figure 6.2-5

** A SECOND SRO WILL BE ON SHIFT AS REQUIRED BY 10 CFR 50.54 WHEN RCS AVERAGE TEMPERATURE >200°F

6.2-7

PROPOSED

6.5

REVIEW AND AUDIT

Three separate organizational units shall be established for the purpose of review and audit of plant operations and safety related matters. One of these will be an on site operations review group, the Plant Operations Review Committee (PORC). A second is the Quality Assurance (Q.A.) group, responsible for the audit of safety related activities associated with plant operations. A third is the independent audit and review group, the Nuclear Safety Audit and Review Board (NSARB). This group responsible for the periodic review of the activities of the Plant Operations Review Committee, for directing audits and evaluating their results, and for the management evaluation of the status and adequacy of the quality assurance program.

6.5.1

PLANT OPERATIONS REVIEW COMMITTEE (PORC) FUNCTION

6.5.1.1

The Plant Operations Review Committee shall function to advise the Superintendent - Ginna Production related to nuclear safety and for referral of appropriate matters to the Nuclear Safety Audit and Review Board.



1. The first part of the document is a list of names and addresses.

2. The second part of the document is a list of names and addresses.

3. The third part of the document is a list of names and addresses.

4. The fourth part of the document is a list of names and addresses.

5. The fifth part of the document is a list of names and addresses.

6. The sixth part of the document is a list of names and addresses.

7. The seventh part of the document is a list of names and addresses.

8. The eighth part of the document is a list of names and addresses.

9. The ninth part of the document is a list of names and addresses.

10. The tenth part of the document is a list of names and addresses.

11. The eleventh part of the document is a list of names and addresses.

12. The twelfth part of the document is a list of names and addresses.

13. The thirteenth part of the document is a list of names and addresses.

14. The fourteenth part of the document is a list of names and addresses.

15. The fifteenth part of the document is a list of names and addresses.

16. The sixteenth part of the document is a list of names and addresses.

17. The seventeenth part of the document is a list of names and addresses.

18. The eighteenth part of the document is a list of names and addresses.

19. The nineteenth part of the document is a list of names and addresses.

20. The twentieth part of the document is a list of names and addresses.

This reorganization will provide greater management attention to Nuclear Assurance and long term planning and direction for the station. Day-to-day operation of the station will be made more effective by creating a production group to concentrate on operations, maintenance, and health physics and chemistry. The Support Group will then be able to concentrate on non-day-to-day issues.

The removal of the communications path from the Quality Control Engineer to the Superintendent, Nuclear Production and Ginna Station Superintendent coincides with elevating the lead quality responsibility from the Quality Control Engineer to the Manager, Nuclear Assurance. This change is intended to enhance the Ginna quality program through reestablishing the direct reporting link to the responsible superintendent and through reassignment of a former experienced lead Quality Control Engineer as Manager, Nuclear Assurance.

The changes will not reduce management attention to the operation of Ginna, will not reduce the effectiveness of the Ginna Staff, is intended to improve the effectiveness of the Quality Assurance organization, and will not affect the health and safety of the public.

The Purchasing Department will be renamed Materials Management to better reflect the activities of that department including purchasing through the Purchasing Agent. The existing communication between the Materials Management department and others within the RGE organization will remain unchanged.

In promulgating its interim final rule to comply with Public Law 97-415, the Commission published as guidelines a series of examples of amendments that are not likely to involve significant hazards considerations. 48 Fed. Reg. 14864, 14870. The Commission's example (i) relates to purely administrative changes to the technical specifications. This change comes within example (i). A no significant hazards finding is warranted.

The proposed change does not involve a significant increase in the probability or consequences of an accident previously evaluated; or create the possibility of a new or different kind of accident from any accident previously evaluated; or involve a significant reduction in a margin of safety.

COMPOSITION

6.5.1.2 The PORC shall be composed of the;

Chairman: Superintendent - Ginna Production
Vice Chairman/Member: Superintendent - Ginna Support
Services
Vice Chairman/Member: Operations Manager
Member: Maintenance Manager
Member: Instrument & Control Supervisor
Member: Technical Manager
Member: Results and Test Supervisor
Member: Reactor Engineer
Member: Health Physics and Chemistry Manager
Member: Nuclear Assurance Manager
Member: Quality Control Engineer

ALTERNATES

6.5.1.3 Alternate members shall be designated by name, in writing by the Chairman.

MEETING FREQUENCY

6.5.1.4 The PORC shall meet at least once per calendar month and as convened by the PORC Chairman.

QUORUM

6.5.1.5 A quorum of the PORC shall consist of the Chairman or Vice Chairman and four members including alternates. No more than two shall be alternates.

AUTHORITY

- 6.5.2.9 a. The chairman of the Nuclear Safety Audit and Review Board is responsible to the President on all activities for which the review board is responsible.
- b. The NSARB shall report to and advise the Vice President, Electric and Steam Production, on those areas of responsibility specified in Sections 6.5.2.7 and 6.5.2.8.

RECORDS

- 6.5.2.10 Records of NSARB activities shall be prepared, approved, and distributed as indicated below:
- a. Minutes shall be recorded of all meetings of this Board. Copies of the minutes shall be forwarded within 14 days following each meeting to the Corporate Chairman of the Board, Vice President, Electric and Steam Production and such others as the Chairman of the NSARB may designate.
- b. Reports of reviews encompassed by Section 6.5.2.7 e, f, g, and h above, shall be prepared, approved and forwarded to the Vice President-Electric and Steam Production within 14 days following completion of the review.
- c. Audit reports encompassed by Section 6.5.2.8 above, shall be forwarded to the Vice President, Electric and Steam Production and to the management positions responsible for the areas audited within 30 days after completion of the audit.

Attachment B

The proposed Technical Specification change reflects changes in the RG&E management organization and changes in the Ginna organization. Following the sudden death of the Senior Vice President, Operations, RG&E Management, with the concurrence of the Board of Directors, has decided not to fill this position. Under the new organization the vice presidents who had reported to the Senior Vice President, Operations, will now report directly to the President and Chief Operating Officer. The President of the Company has had an extensive involvement with the Ginna plant in various capacities since the time of construction.

A realignment of responsibilities in the Engineering organization has resulted in a change in title whereby the Engineering Department now reports to the Vice President, Engineering and Construction, and a position of Chief Engineer has been reinstated. The position of Assistant Chief Engineer, Engineering and Construction, has been replaced by the position of Director of Engineering Services. In order to maintain independence of the Quality Assurance organization from the design, construction and other engineering functions, the Executive Vice President will have overall responsibility and authority to direct Quality Assurance, however, the day-to-day direction will come from the Chief Engineer.

The Ginna organization changes consist of the following:

The position of Superintendent, Nuclear Production and Superintendent of Ginna Station has been changed to the position of Superintendent, Nuclear Production.

The position of Superintendent of Ginna Station has been divided into Superintendent-Ginna Production and Superintendent-Ginna Support Services. The Superintendent Ginna-Production is responsible for overall on-site Ginna Station operation.

The position of Assistant Superintendent has been eliminated.

Nuclear Assurance will report to the Superintendent, Nuclear Production.

Central Records will report to the Nuclear Assurance Manager.

The Health Physics and Chemistry Manager, the Maintenance Manager, and the Operation Manager will report to the Superintendent-Ginna Production.

The Technical Manager and the Materials Supervisor will report to the Superintendent-Ginna Support Services.

Minor changes have also been made under the various managers which is reflected in the figures.

1. The first part of the report deals with the general situation of the country and the progress of the work. It is a very interesting and informative account of the work done during the year.

2. The second part of the report deals with the results of the work done during the year. It is a very detailed and comprehensive account of the work done during the year.

3. The third part of the report deals with the conclusions drawn from the work done during the year. It is a very clear and concise summary of the work done during the year.

4. The fourth part of the report deals with the recommendations made for the future work. It is a very practical and useful set of recommendations for the future work.

5. The fifth part of the report deals with the summary of the work done during the year. It is a very clear and concise summary of the work done during the year.

6. The sixth part of the report deals with the conclusions drawn from the work done during the year. It is a very clear and concise summary of the work done during the year.

7. The seventh part of the report deals with the recommendations made for the future work. It is a very practical and useful set of recommendations for the future work.