

6.0 ADMINISTRATIVE CONTROLS

6.1 RESPONSIBILITY

6.1.1 The Superintendent-Ginna Production shall be responsible for overall on-site Ginna Station operation and shall delegate in writing the succession to this responsibility during his absence.

# R. E. GINNA NUCLEAR POWER PLANT MANAGEMENT ORGANIZATION CHART

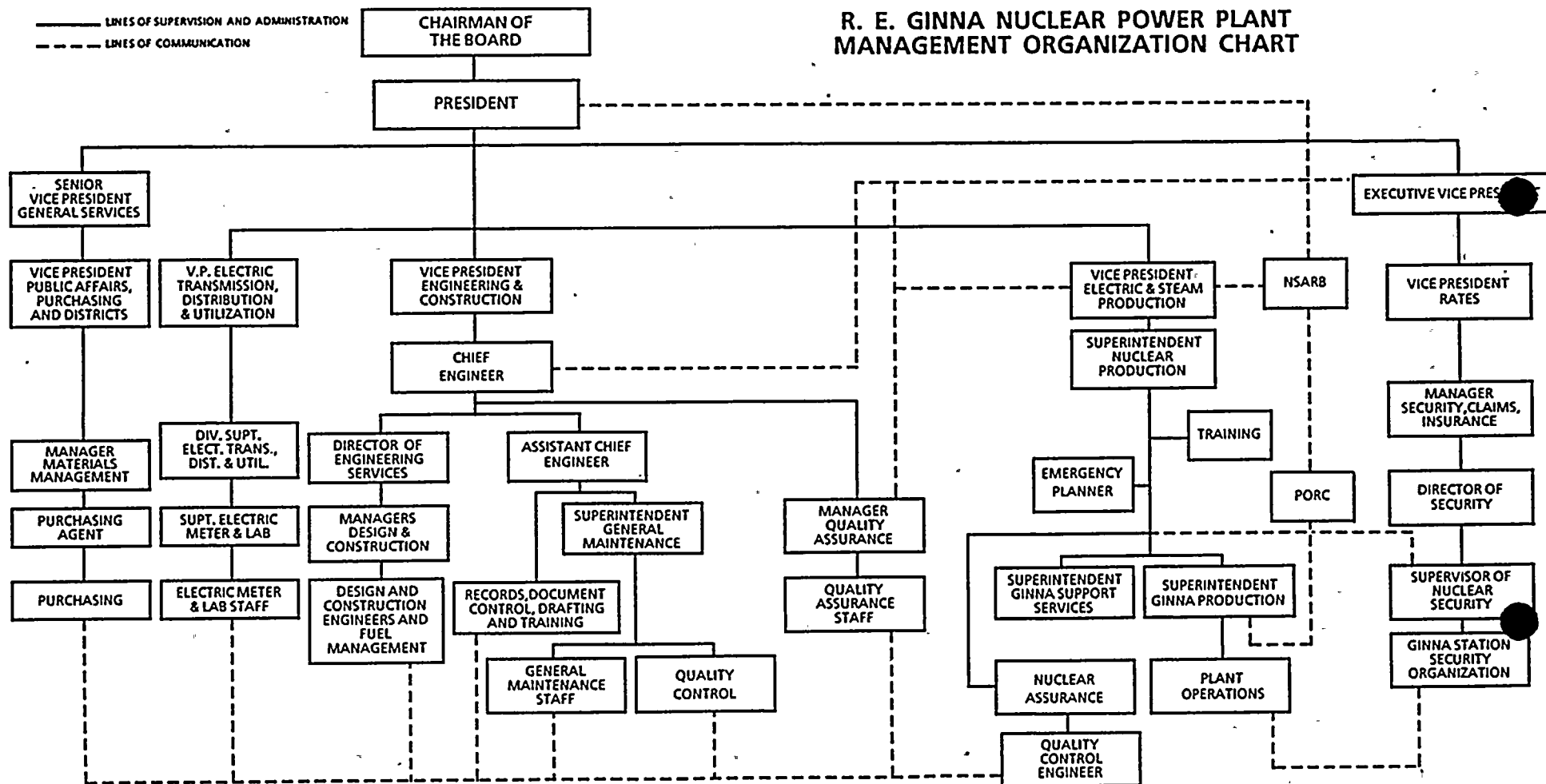
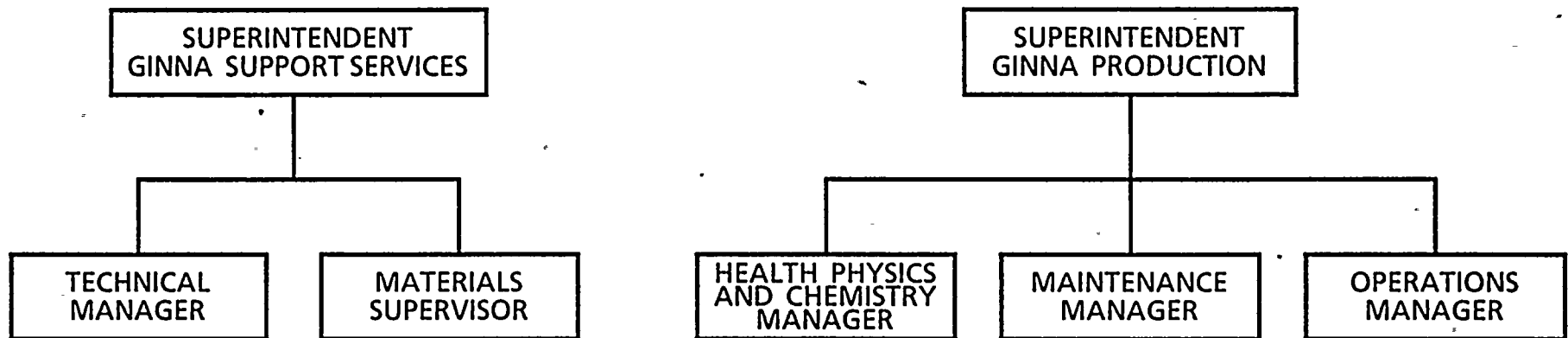


FIGURE 6.2-1

REV. 4



# ROCHESTER GAS AND ELECTRIC CORPORATION GINNA STATION ORGANIZATION



6.2-4

PROPOSED

Figure 6.2-2

**R. E. GINNA STATION  
ADMINISTRATIVE AND HEALTH PHYSICS & CHEMISTRY SECTION  
GROUP ORGANIZATIONS**

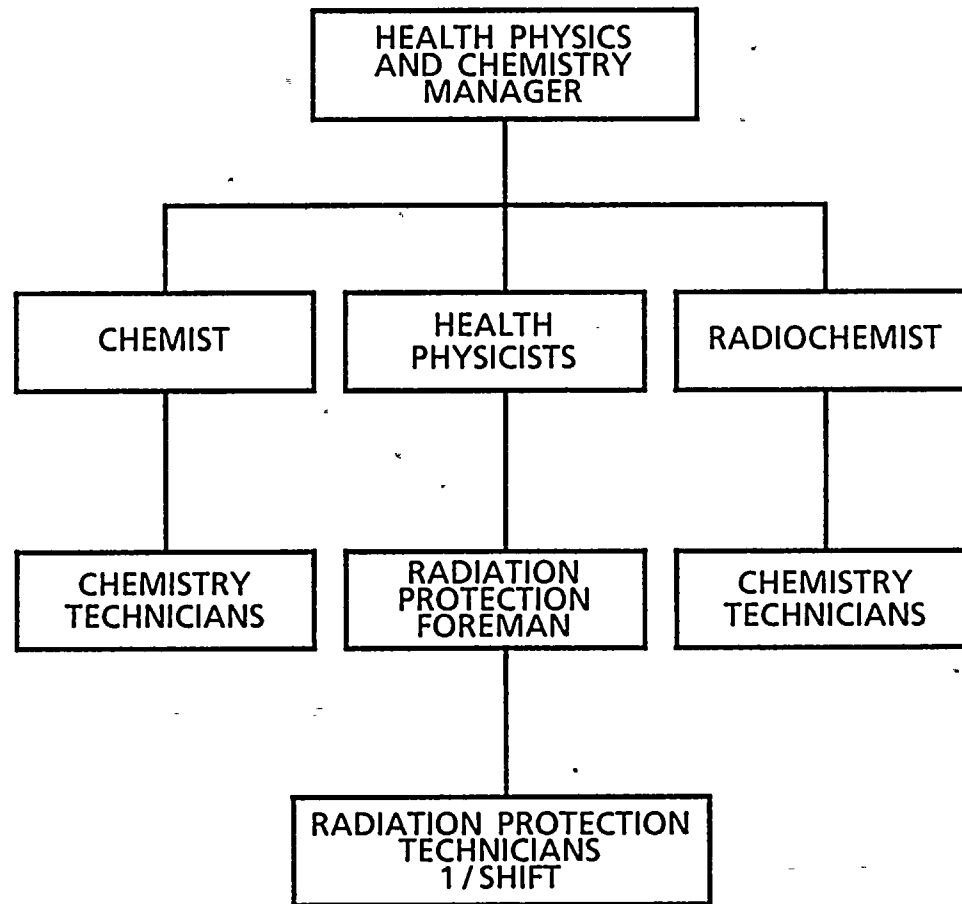


Figure 6.2-3



# R. E. GINNA STATION MAINTENANCE AND NUCLEAR ASSURANCE SECTION GROUP ORGANIZATIONS

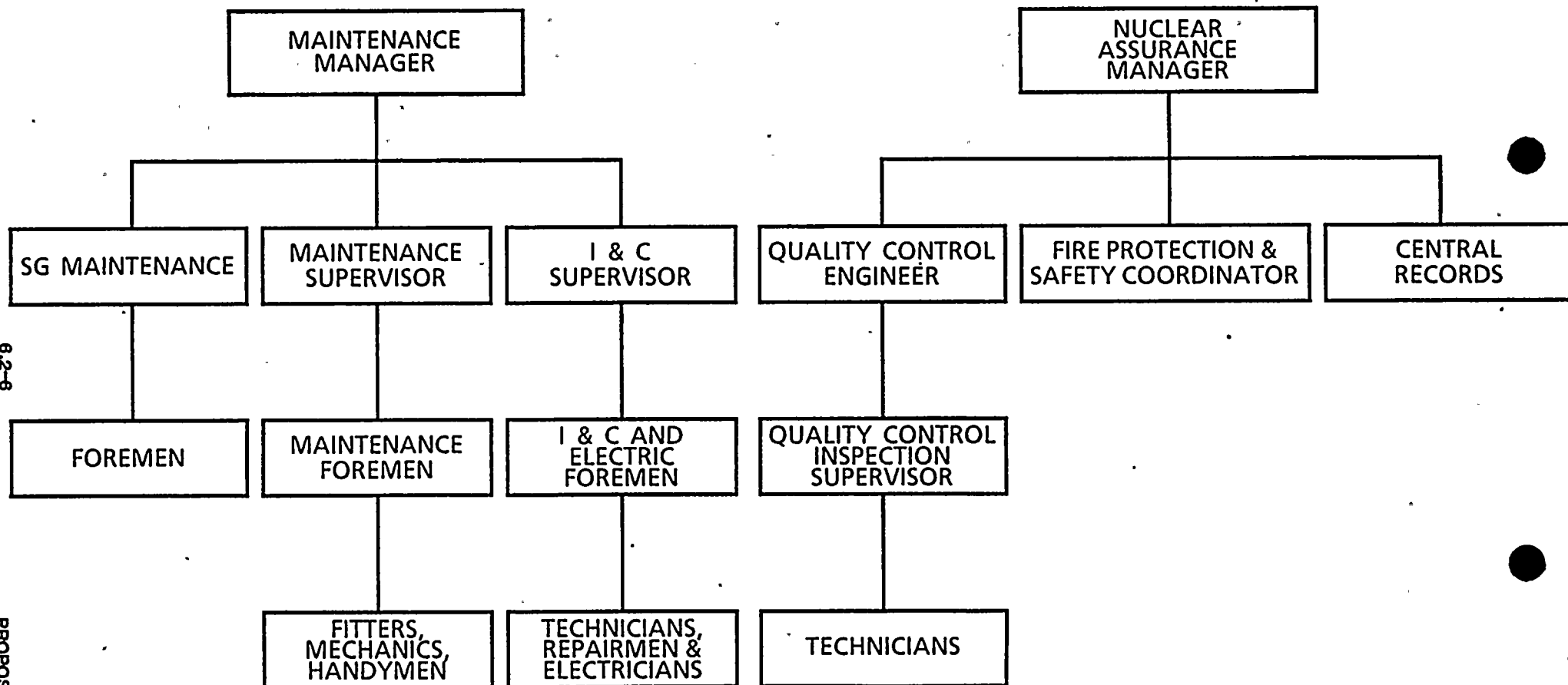


Figure 6.2-4

# R. E. GINNA STATION OPERATIONS AND TECHNICAL SECTION GROUP ORGANIZATIONS

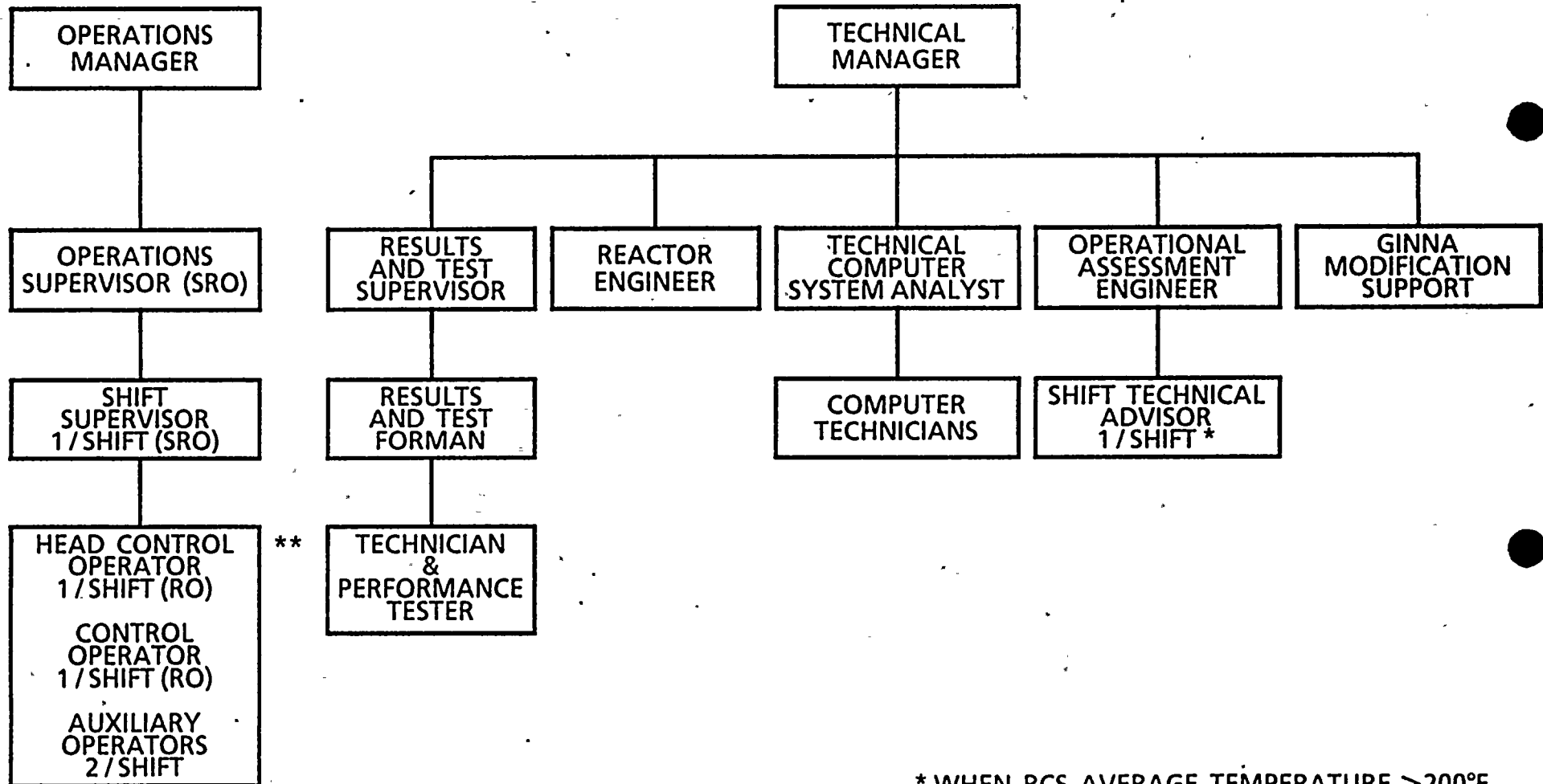


Figure 6.2-5

\* WHEN RCS AVERAGE TEMPERATURE > 200°F

\*\* A SECOND SRO WILL BE ON SHIFT AS REQUIRED BY 10 CFR 50.54 WHEN RCS AVERAGE TEMPERATURE > 200°F



6.5

REVIEW AND AUDIT

Three separate organizational units shall be established for the purpose of review and audit of plant operations and safety related matters. One of these will be an on site operations review group, the Plant Operations Review Committee (PORC). A second is the Quality Assurance (Q.A.) group, responsible for the audit of safety related activities associated with plant operations. A third is the independent audit and review group, the Nuclear Safety Audit and Review Board (NSARB). This group responsible for the periodic review of the activities of the Plant Operations Review Committee, for directing audits and evaluating their results, and for the management evaluation of the status and adequacy of the quality assurance program.

6.5.1

PLANT OPERATIONS REVIEW COMMITTEE (PORC) FUNCTION

6.5.1.1

The Plant Operations Review Committee shall function to advise the Superintendent - Ginna Production related to nuclear safety and for referral of appropriate matters to the Nuclear Safety Audit and Review Board.

#### COMPOSITION

6.5.1.2 The PORC shall be composed of the;

Chairman: Superintendent - Ginna Production  
Vice Chairman: Superintendent - Ginna Support Services  
Vice Chairman: Operations Manager  
Member: Maintenance Manager  
Member: Instrument & Control Supervisor  
Member: Technical Manager  
Member: Results and Test Supervisor  
Member: Reactor Engineer  
Member: Health Physics and Chemistry Manager  
Member: Nuclear Assurance Manager  
Member: Quality Control Engineer  
Member: Operations Supervisor (SRO)

#### ALTERNATES

6.5.1.3 Alternate members shall be designated by name, in writing by the Chairman.

#### MEETING FREQUENCY

6.5.1.4 The PORC shall meet at least once per calendar month and as convened by the PORC Chairman.

#### QUORUM

6.5.1.5 A quorum of the PORC shall consist of the Chairman or Vice Chairman and four members including alternates. No more than two shall be alternates.



## Attachment B

The proposed Technical Specification change reflects changes in the RG&E management organization and changes in the Ginna organization. Following the sudden death of the Senior Vice President, Operations, RG&E Management, with the concurrence of the Board of Directors, has decided not to fill this position. Under the new organization the vice presidents who had reported to the Senior Vice President, Operations, will now report directly to the President and Chief Operating Officer. The President of the Company has had an extensive involvement with the Ginna plant in various capacities since the time of construction.

A realignment of responsibilities in the Engineering organization has resulted in a change in title whereby the Engineering Department now reports to the Vice President, Engineering and Construction, and a position of Chief Engineer has been reinstated. The position of Assistant Chief Engineer, Engineering and Construction, has been replaced by the position of Director of Engineering Services. In order to maintain independence of the Quality Assurance organization from the design, construction and other engineering functions, the Executive Vice President will have overall responsibility and authority to direct Quality Assurance, however, the day-to-day direction will come from the Chief Engineer.

The Ginna organization changes consist of the following:

The position of Superintendent, Nuclear Production and Superintendent of Ginna Station has been changed to the position of Superintendent, Nuclear Production.

The position of Superintendent of Ginna Station has been divided into Superintendent-Ginna Production and Superintendent-Ginna Support Services. The Superintendent Ginna-Production is responsible for overall on-site Ginna Station operation.

The position of Assistant Superintendent has been eliminated.

Nuclear Assurance will report to the Superintendent, Nuclear Production.

Central Records will report to the Nuclear Assurance Manager.

The Health Physics and Chemistry Manager, the Maintenance Manager, and the Operation Manager will report to the Superintendent-Ginna Production.

The Technical Manager and the Materials Supervisor will report to the Superintendent-Ginna Support Services.

Minor changes have also been made under the various managers which is reflected in the figures.

This reorganization will provide greater management attention to Nuclear Assurance and long term planning and direction for the station. Day-to-day operation of the station will be made more effective by creating a production group to concentrate on operations, maintenance, and health physics and chemistry. The Support Group will then be able to concentrate on non-day-to-day issues.

The new member added to the PORC (Operations Supervisor) or his alternate will hold an SRO license. This will increase the number of licensed individuals on PORC thereby increasing the expertise of the Committee.

The removal of the communication path from the Quality Control Engineer to the Superintendent, Nuclear Production and Superintendent of Ginna Station will not effect quality control. The Engineer will still have the same controls, however, he will communicate through the Nuclear Assurance Manager.

The changes will not reduce management attention to the operation of Ginna, will not reduce the effectiveness of the Ginna Staff, will not reduce the effectiveness of the Quality Assurance organization, and will not affect the health and safety of the public.

The Purchasing Department will be renamed Materials Management to better reflect the activities of that department including purchasing through the Purchasing Agent. The existing communication between the Materials Management department and others within the RGE organization will remain unchanged.

In promulgating its interim final rule to comply with Public Law 97-415, the Commission published as guidelines a series of examples of amendments that are not likely to involve significant hazards considerations. 48 Fed. Reg. 14864, 14870. The Commission's example (i) relates to purely administrative changes to the technical specifications. This change comes within example (i). A no significant hazards finding is warranted.

The proposed change does not involve a significant increase in the probability or consequences of an accident previously evaluated; or create the possibility of a new or different kind of accident from any accident previously evaluated; or involve a significant reduction in a margin of safety.

