

ROCHESTER GAS AND ELECTRIC CORPORATION  
R. E. GINNA STATION  
ORGANIZATION

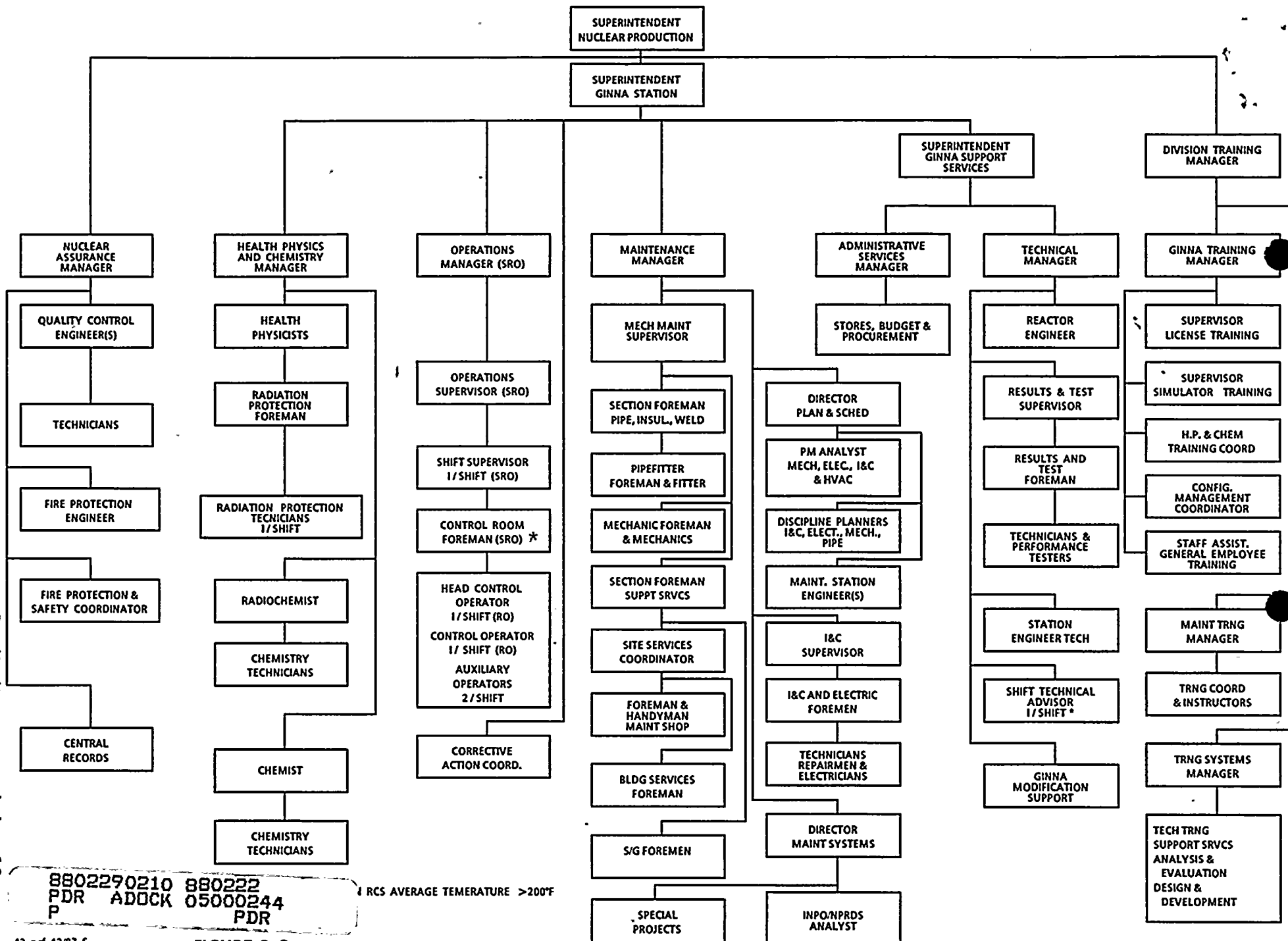


FIGURE 2-3

8802290210 880222  
PDR ADDCK 05000244  
P PDR

RCS AVERAGE TEMPERATURE >200°F



Superintendent, Electric Substations  
Superintendent, General Maintenance  
Quality Services Coordinator  
Director, Research and Science

In addition to the above individuals, two advisory groups are utilized to review and audit plant operations. These groups are the Plant Operations Review Committee and the Nuclear Safety Audit and Review Board. The Plant Operations Review Committee acts in an advisory capacity to the Ginna Station Superintendent and the Nuclear Safety Audit and Review Board advises the Senior Vice President, Production and Engineering. The qualifications of members and the responsibilities of these organizations are described in Appendix A to Provisional Operating License No. DPR-18, Section 6.0, Technical Specifications.

The Chairman of the Board of the Rochester Gas and Electric Corporation directed the establishment of the Quality Assurance Program and issued the governing policy statement. He has established the Nuclear Safety Audit and Review Board to review and audit plant operations. The Chairman of the Nuclear Safety Audit and Review Board is responsible to the President on all activities of the Nuclear Safety Audit and Review Board.

The Senior Vice President, Production and Engineering has corporate responsibility for operation of Ginna Station in accordance with applicable regulatory requirements. He is responsible for establishing the policies and requirements necessary to assure safe and reliable operations of Ginna Station. He is also responsible for those items delineated in Section 6.0, Technical Specifications. He has overall responsibility for and authority to direct the Quality Assurance Program.

The responsibility for proper implementation of the quality assurance program requirements at Ginna Station has been assigned to the Superintendent, Ginna Station and the Superintendent, Nuclear Production.

The Chief Engineer is responsible for supervising the Engineering Division which is responsible for establishing policies and requirements for fuel management and the design and construction of major modifications in accordance with applicable design bases, regulatory requirements, codes and standards. He is also responsible for safety related maintenance, repair, modifications and inspections performed at the General Maintenance facility, for support of these activities at Ginna Station, and for special processes and

Revision 13  
December 1987  
Corrected 2/19/88

