

——— LINES OF SUPERVISION AND ADMINISTRATION
 - - - - LINES OF COMMUNICATION

R. E. GINNA NUCLEAR POWER PLANT MANAGEMENT ORGANIZATION CHART

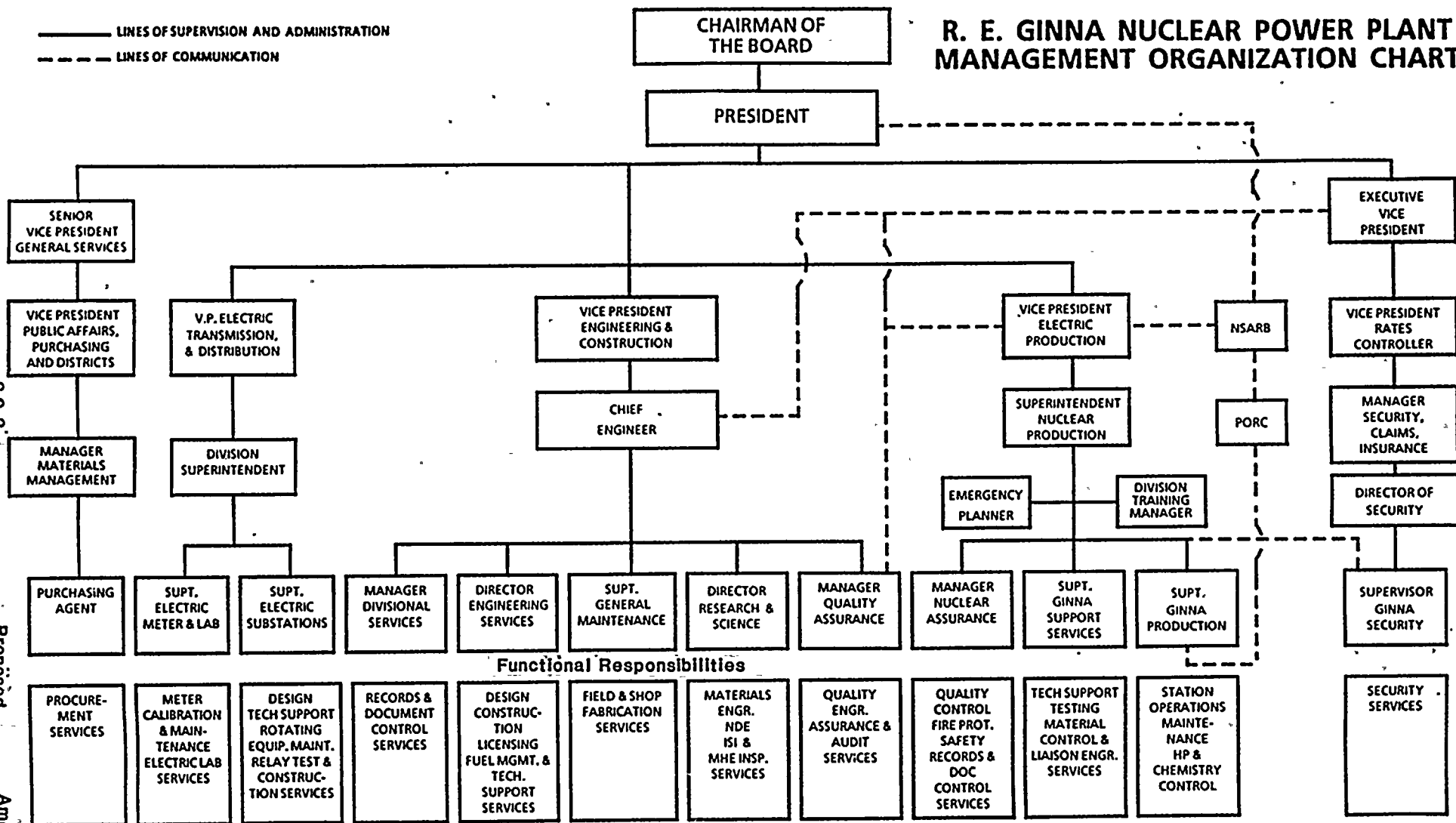


Figure 6.2-1

8612240268 861217
 PDR ADOCK 05000244
 PDR

ROCHESTER GAS AND ELECTRIC CORPORATION GINNA STATION ORGANIZATION

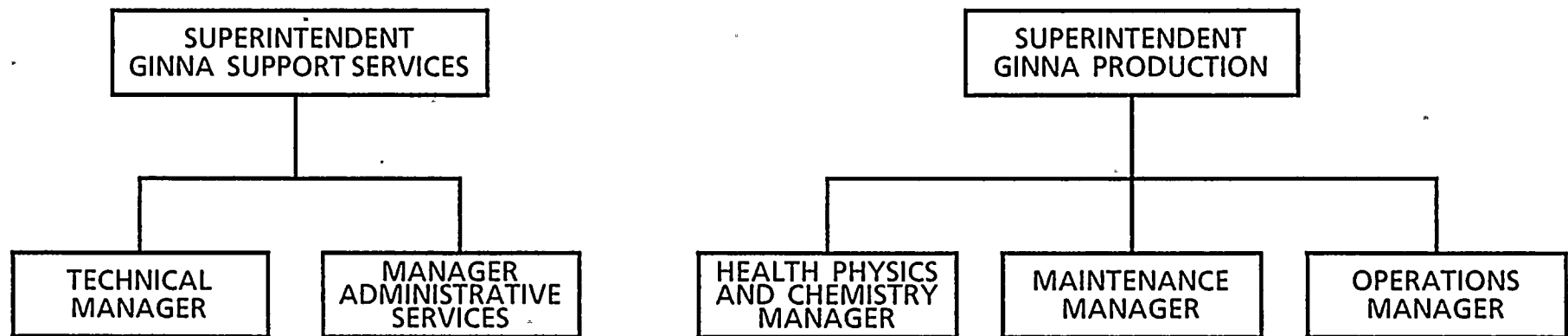


Figure 6.2-2

6.2-4

Proposed

Amendment 7a

**R. E. GINNA STATION
HEALTH PHYSICS & CHEMISTRY SECTION
GROUP ORGANIZATIONS**

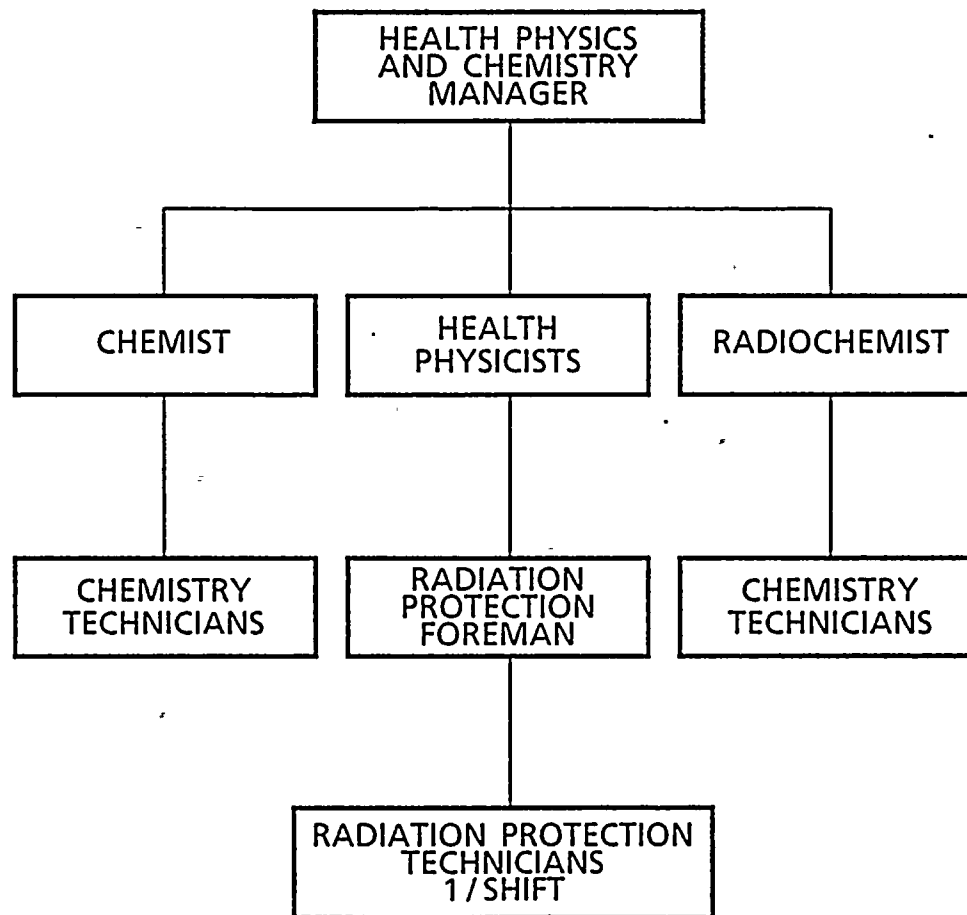


Figure 6.2-3

R. E. GINNA STATION

MAINTENANCE AND NUCLEAR ASSURANCE SECTION

GROUP ORGANIZATIONS

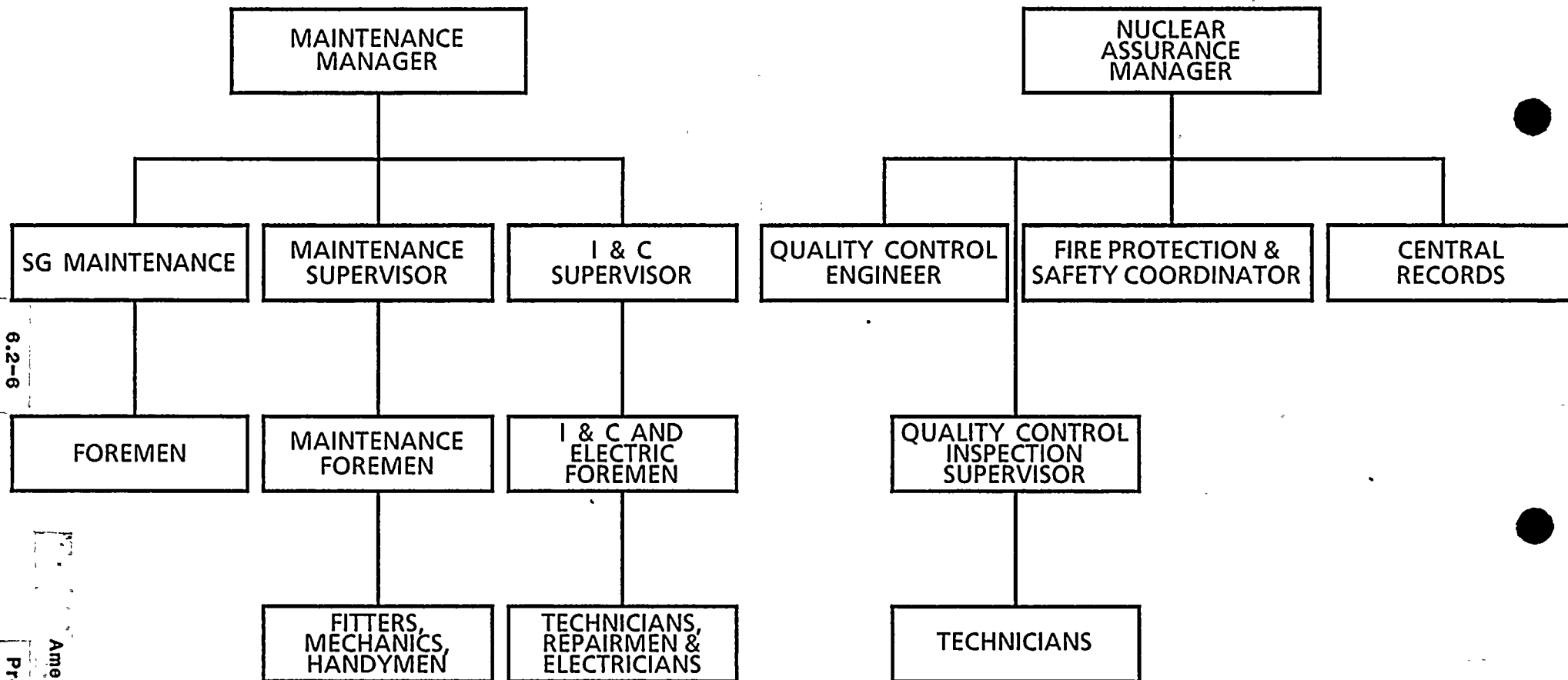


Figure 6.2-4

Attachment B

The proposed Technical Specification change reflects changes in the RG&E Engineering organization, changes in the Ginna organization, and changes in the Electric Transmission and Distribution organization. Changes have also been made to Figure 6.2-1 to simplify the figure. The bottom of the figure has been modified to illustrate the functional responsibilities of the position directly above the box. A detailed description of all the changes is presented on Table 1.

The Engineering organization changes follow the retirement of the Assistant Chief Engineer. The position of Assistant Chief Engineer has been eliminated and a Research and Science Group has been created. Also the position of Manager, Divisional Services has been created to handle support services. The functions that reported to the Assistant Chief Engineer now report to the Chief Engineer directly or through the Research and Science Director, or Manager of Divisional Services.

The Ginna organization changes consist of the Ginna Quality Control Inspection Supervisor reporting directly to the Nuclear Assurance Manager in lieu of the Quality Control Engineer. The change will separate the Quality Control responsibilities for quality involvement in work planning activities from the more traditional verification, inspection and surveillance activities. The responsibilities of the training organization have also been expanded to include the simulator and the accreditation program. This results in a Division Training Manager position now appearing on Figure 6.2-1.

The changes associated with the Electric Transmission and Distribution organization result from a reorganization by which duties formally assigned to Engineering and Electric Meter and Laboratory are now being performed by Engineering, Electric Meter and Laboratory, and Electric Substations departments.

In accordance with 10CFR 50.91, this change to the Technical Specifications has been evaluated against three criteria to determine if the operation of the facility in accordance with the proposed amendment would:

1. Involve a significant increase in the probability or consequences of an accident previously evaluated; or
2. Create the possibility of a new or different kind of accident from any accident previously evaluated; or
3. involve a significant reduction in margin of safety.

The proposed revision reflects routine changes in department or division organizations. The proposed revision does not involve a significant increase in the probability or consequences of an accident previously evaluated; or create the possibility of a

new or different kind of accident from any accident previously evaluated, or involve a significant reduction in a margin of safety. Therefore, Rochester Gas and Electric submits that the issues associated with this amendment request warrant a no significant hazards finding.

In addition, in the Commission published guidelines (48 Feg. Rg. 14864, 14870) a series of examples of amendments that are not likely to involve significant hazards considerations are presented. The Commission's example (i) relates to purely administrative changes to the technical specifications. This change is consistent with example (i). A no significant hazards finding is warranted.

Table 1

Detailed Technical Specification Changes

<u>Location</u>	<u>Description of Change</u>	<u>Reason for Change</u>
p. 6.2-3 Figure 6.2-1	<p>removed the following boxes</p> <p>"PURCHASING"</p> <p>"ELECTRIC METER & LAB STAFF"</p> <p>"MANAGERS DESIGN & CONSTRUCTION"</p> <p>"DESIGN & CONSTRUCTION ENGINEERING AND FUEL MANAGEMENT"</p> <p>"RECORDS, DOCUMENT CONTROL, DRAFTING AND TRAINING"</p> <p>"GENERAL MAINTENANCE STAFF"</p> <p>"QUALITY CONTROL"</p> <p>"QUALITY ASSURANCE STAFF"</p> <p>"QUALITY CONTROL ENGINEER"</p> <p>"PLANT OPERATIONS"</p> <p>"GINNA STATION SECURITY ORGANIZATION"</p> <p>inserted boxes at bottom of the figure which represent the functional responsibility of the position depicted in the above boxes.</p> <p>inserted "SUPT. ELECTRIC SUBSTATIONS"</p> <p>replaced "DIV. SUPT. ELECT. TRANS. DIST. & UTIL." with "DIVISION SUPERINTENDENT"</p> <p>replaced "VP ELECTRIC TRANSMISSION, DISTRIBUTION & UTILIZATION" with "VP ELECTRIC TRANSMISSION & DISTRIBUTION"</p> <p>created box for new position of "MANAGER DIVISIONAL SERVICES"</p> <p>created box for new position of "DIRECTOR RESEARCH & SCIENCE"</p>	<p>Simplify organization chart to illustrate services and product lines provided in support of Ginna operations.</p> <p>reorganization of Electric Transmission & Distribution.</p> <p>reorganization of Electric Transmission & Distribution.</p> <p>reorganization of Electric Transmission & Distribution.</p> <p>oversee support functions formerly reporting to Assistant Chief Engineer.</p> <p>oversee functions formerly reporting to Assistant Chief Engineer.</p>

LocationDescription of ChangeReason for Change

replaced "TRAINING" with
DIVISION TRAINING MANAGER"

expansion of Training
organization responsibilities.

replaced "SUPERVISOR OF
NUCLEAR SECURITY" with
"SUPERVISOR GINNA SECURITY"

title change

removed "Steam" from the
Vice President Electric
Production title.

RG&E no longer involved
in steam production.

p. 6.2-4 Figure 6.2-2

replaced "MATERIALS
SUPERVISOR" with "MANAGER
ADMINISTRATIVE SERVICES"

title change

p. 6.2-5 Figure 6.2-3

removed "ADMINISTRATIVE AND"
from figure title

typographical error

p. 6.2-6 Figure 6.2-4

rerouted lines of supervision Ginna organization change
and administration.

