

Attachment A

1. Replace Technical Specification Figure 6.2-1 with the attached figure.

8011060 449



# R.E. GINNA NUCLEAR POWER PLANT MANAGEMENT ORGANIZATION CHART

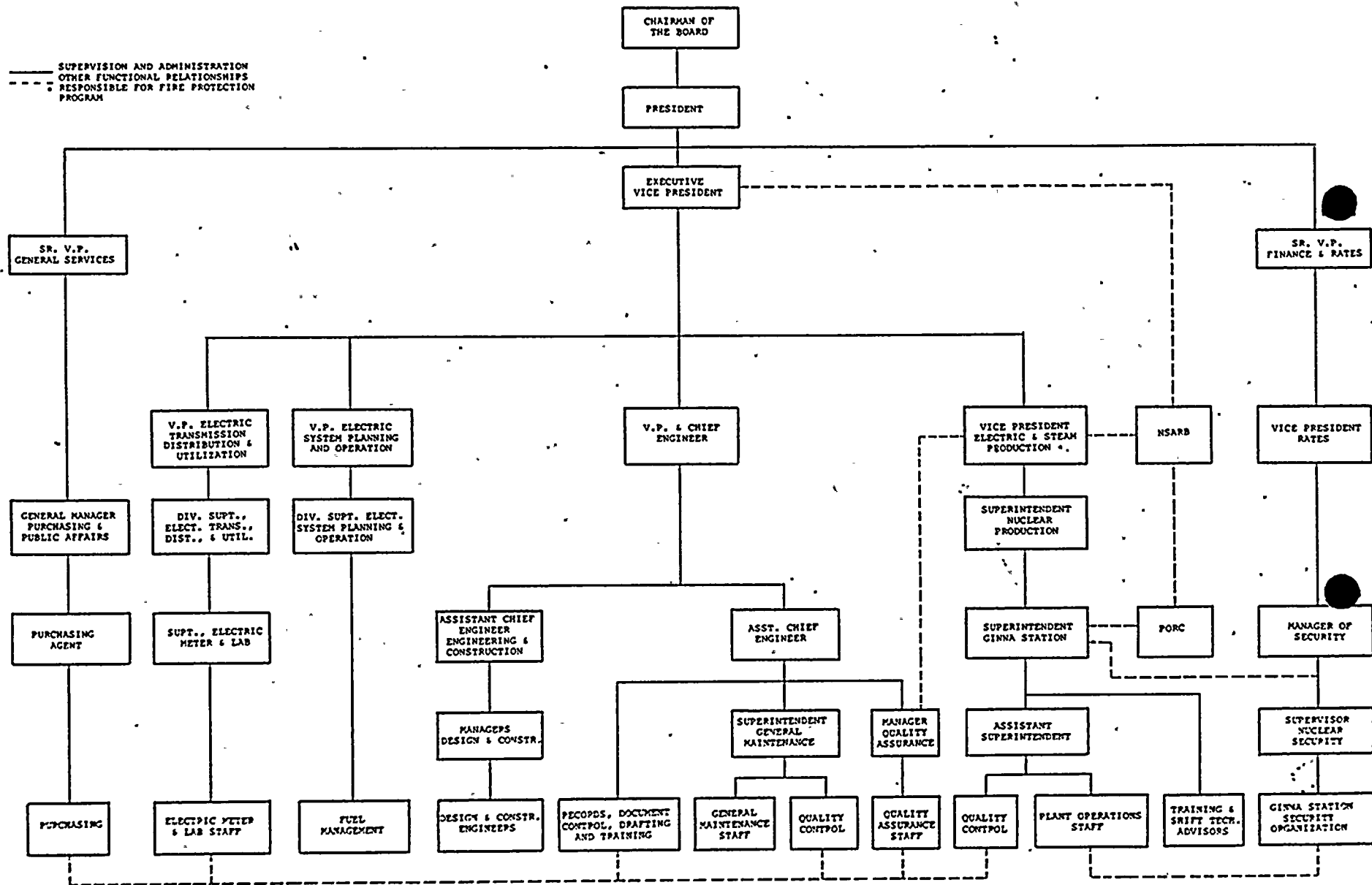


FIGURE 6.2-1



## Attachment B

The management organization chart has been revised to reflect recent changes. Two positions of Senior Vice President have been created, Senior Vice President - General Services and Senior Vice President - Finance and Rates. Reporting to the former is the General Manager - Purchasing and Public Affairs. Reporting to the latter is the Vice President - Rates. The position of Chief Engineer has been changed to Vice President and Chief Engineer.

These changes do not degrade the offsite management control of Ginna Station.

Attachment C  
Fee Determination

The proposed Technical Specification change is administrative in nature and has no safety or environmental significance. It therefore falls within Class II as defined in 10 CFR Section 170.22 with a fee of \$1200.00.