

REGULATORY INFORMATION DISTRIBUTION SYSTEM (RIDS)

ACCESSION NBR: 8011040384 DOC. DATE: 80/10/29 NOTARIZED: NO DOCKET # 05000244
 FACIL: 50-244 Robert Emmet Ginna Nuclear Plant, Unit 1, Rochester G 05000485
 STN: 50-485 Sterling Power Project Nuclear, Unit 1, Rochester 05000485
 AUTH. NAME: MAIER, J.E. AUTHOR AFFILIATION: Rochester Gas & Electric Corp.
 RECIP. NAME: CRUTCHFIELD, D. RECIPIENT AFFILIATION: Operating Reactors Branch 5

SUBJECT: Informs of changes in organizational structure per FE Drake retirement as board chairman & chief executive officer. Corporate organization chart, effective 801001, encl.

DISTRIBUTION CODE: M006S COPIES RECEIVED: LTR 1 ENCL 1 SIZE: 2
 TITLE: Changes of Personnel/Address

NOTES: 1 copy: SEP Sect. Ldr. 05000244
 Standardized Plant, I&E: 3 copies all material. Inactive. 05000485

	RECIPIENT ID CODE/NAME		COPIES LTR ENCL		RECIPIENT ID CODE/NAME		COPIES LTR ENCL	
ACTION:	LAINAS, G.	12	1	1	CRUTCHFIELD		1	0
	SMITH, H.	04	1	1	NOWICKI, S.	05	1	1
INTERNAL:	ASLAP	10	1	1	ASLB	09	1	1
	DIR, LICENSING		1	1	I&E	14	2	2
	MPA	08	1	1	NRC PDR	02	1	1
	OELD	06	1	1	REG FILE	01	1	1
EXTERNAL:	ACRS	13	1	1	LPDR	03	1	1

NOV 5 1980

TOTAL NUMBER OF COPIES REQUIRED: LTR 20 ENCL 19

THE UNITED STATES OF AMERICA
DO hereby certify that
[illegible text]

is a true and correct copy of the
[illegible text]

as the same appears from the records
of the [illegible text]

in the [illegible text]

at [illegible text]

on the [illegible text]

in the year of our Lord one thousand nine hundred and [illegible text]

and of the Independence of the United States the [illegible text]

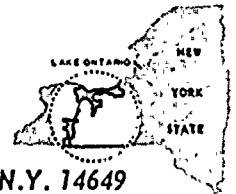
Witness my hand and the seal of the [illegible text]



ROCHESTER GAS AND ELECTRIC CORPORATION • 89 EAST AVENUE, ROCHESTER, N.Y. 14649

JOHN E. MAIER
VICE PRESIDENT

TELEPHONE
AREA CODE 716 546-2700



October 29, 1980

Director of Nuclear Reactor Regulation
ATTN: Mr. Dennis M. Crutchfield, Chief
Operating Reactors Branch #5
U. S. Nuclear Regulatory Commission
Washington, D. C. 20555

Subject: Rochester Gas and Electric Corporation Organization Restructure

Dear Mr. Crutchfield:

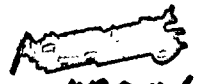
With the retirement of Francis E. Drake, Jr. as Chairman of the Board and Chief Executive Officer of Rochester Gas and Electric Corporation there were several significant changes in our organization structure that affect the interface between our respective organizations. Effective October 1, 1980:

1. Paul W. Briggs was elected Chairman of the Board and Chief Executive Officer.
2. Keith W. Amish was elected President and Chief Operating Officer.
3. Leon D. White, Jr. was elected Executive Vice President - Operations and Engineering.
4. John E. Maier was elected Vice President - Electric and Steam Production.

I have enclosed a corporate organization chart for your information. As a result of these changes please direct all future correspondence regarding our nuclear operations to this office.

Very truly yours,


John E. Maier


17006
S
1/1

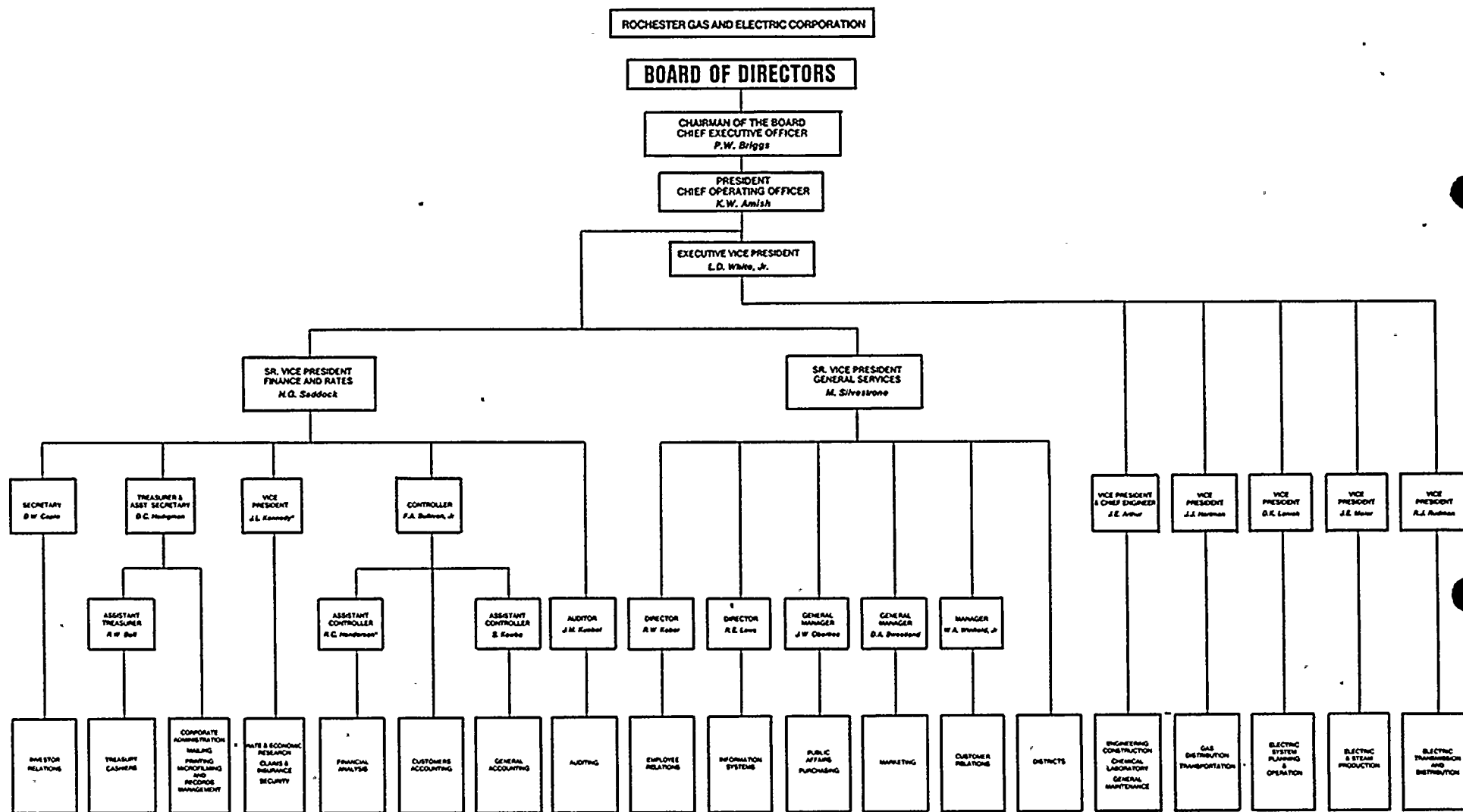
Enc.

cc: P. W. Briggs
K. W. Amish
L. D. White, Jr.

8011040384

H

[The body of the document contains several paragraphs of text that are extremely faint and illegible due to the quality of the scan. The text appears to be organized into multiple sections, possibly separated by headings or subheadings, but the specific content cannot be discerned.]



EXEMPT 697
NON EXEMPT 1996
TOTAL EMPLOYEES 2693
10/1/80

*Effective 12-1-80 R.C. Henderson will become Vice President, Rates

