

# REGULATORY INFORMATION DISTRIBUTION SYSTEM (RIDS)

ACCESSION NBR: 8009030485 DOC DATE: 80/08/28 NOTARIZED: NO DOCKET #  
 FACIL: 50-244 Robert Emmet Ginna Nuclear Plant, Unit 1, Rochester G 05000244  
 AUTH. NAME: AUTHOR AFFILIATION  
 WHITE, L.D. Rochester Gas & Electric Corp.  
 RECIP. NAME: RECIPIENT AFFILIATION  
 CRUTCHFIELD, D. Operating Reactors Branch 5

SUBJECT: Submits info describing current status & schedules re  
 anchorage & support of safety-related electrical equipment.

DISTRIBUTION CODE: A001S COPIES RECEIVED: LTR 1 ENCL 2 SIZE: 2-----  
 TITLE: General Distribution for after Issuance of Operating Lic

NOTES: 1 copy: SEP Sect. Ldr.

05000244

ACTION:	RECIPIENT ID CODE/NAME	COPIES		RECIPIENT ID CODE/NAME	COPIES	
		LTR	ENCL		LTR	ENCL
ACTION:	CRUTCHFIELD 04	13	13			
INTERNAL:	D/DIR, HUM FAC 08	1	1	DIR, HUM FAC 07	1	1
	I&E 06	2	2	NRC PDR 02	1	1
	OELB 11	1	0	OR ASSESS BR 10	1	0
	REG FILE 01	1	1			
EXTERNAL:	ACRS 09	16	16	LPDR 03	1	1
	NSIC 05	1	1			

SEP 1 1980

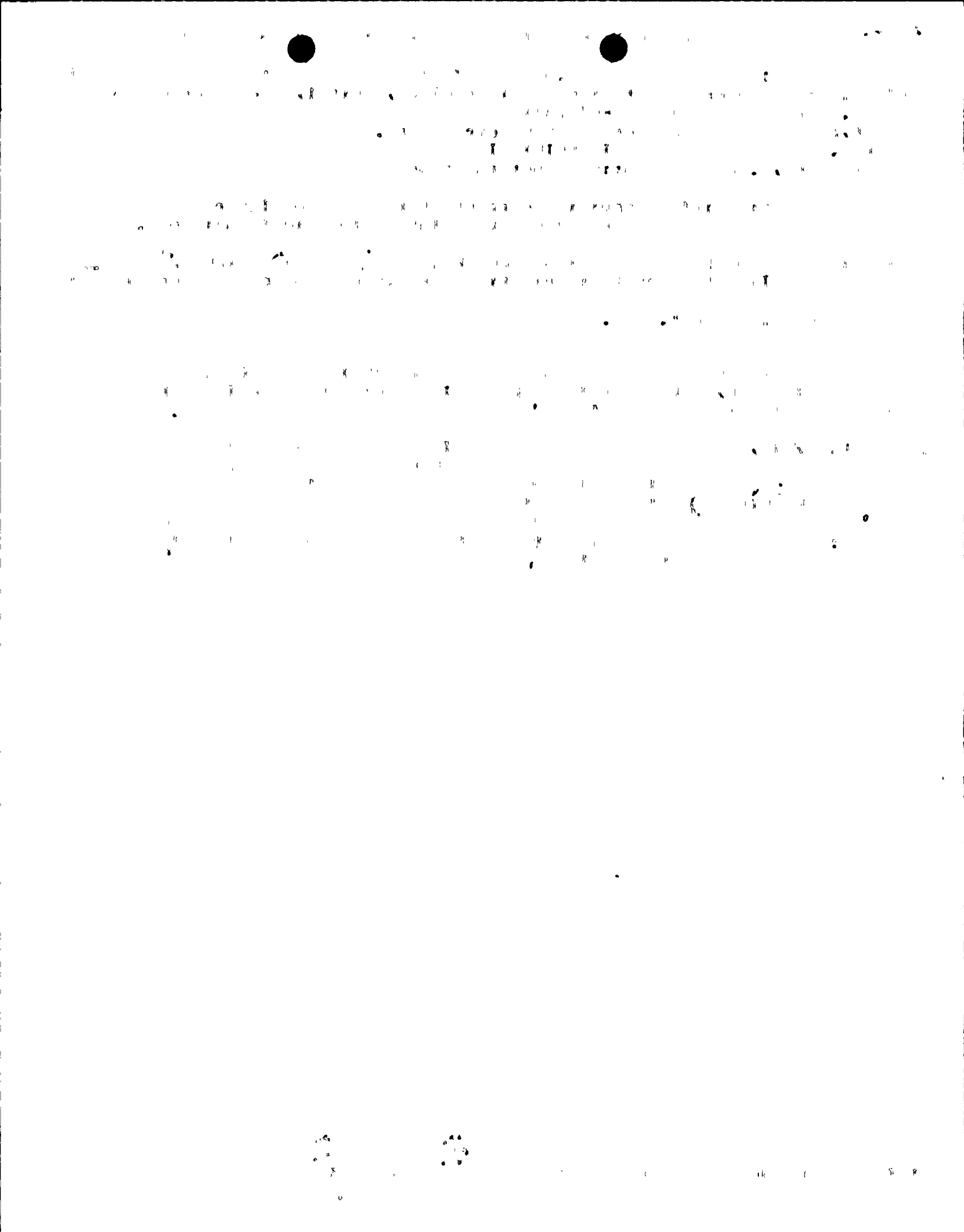
TOTAL: NUMBER OF COPIES REQUIRED: LTR

46  
31

ENCL

0  
31

W

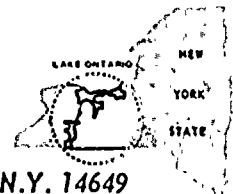




ROCHESTER GAS AND ELECTRIC CORPORATION • 89 EAST AVENUE, ROCHESTER, N.Y. 14649

LEON D. WHITE, JR.  
VICE PRESIDENT

TELEPHONE  
AREA CODE 716 546-2700



August 28, 1980

Office of Nuclear Reactor Regulation  
Attention: Mr. Dennis M. Crutchfield, Chief  
Operating Reactors Branch No. 5  
U.S. Nuclear Regulatory Commission  
Washington, D.C. 20555

Subject: Anchorage and Support of Safety Related Electrical  
Equipment  
R. E. Ginna Nuclear Power Plant  
Docket No. 50-244

Dear Mr. Crutchfield:

In our letter dated February 7, 1980 we described our action plan to address the issues raised in Mr. Darrel Eisenhut's letter dated January 1, 1980 on the above subject. We described our intent to resolve the overall issue by September 1, 1980 with the schedule for any required modifications to be dependent on their extent and equipment delivery schedule. The purpose of this letter is to describe our current status and schedules.

All raceway anchors (Q deck bolts, embedded strut and shell type anchors) have been tested and upgraded where necessary, with the exception of the in-containment anchors. Because of our inability to perform testing in containment during our Spring refueling outage we now intend to perform the same series of tests on the in-containment raceway anchors during our Fall 1980 outage, scheduled to begin on October 25, 1980. In addition to testing the anchor bolts on the raceway system, we also tested the friction bolts used to suspend the strut supports from the wall or ceiling anchors. A minimum torque value was established to prevent slippage. All friction bolts were tested and tightened, where required, to the minimum torque value on all supports outside containment. The in-containment friction bolt testing will take place during the fall outage concurrent with anchor tests. Anchor testing has shown an acceptable failure rate and we except the containment anchors to be consistent with other plant areas where tests have been completed. Formal documentation summarizing the results of the overall raceway program will be submitted by December 31, 1980 as required by your July 28, 1980 letter.

A001  
s  
1/0

8009030 485

P



DATE August 28, 1980

TO Mr. Dennis M. Crutchfield

2

All safety related equipment anchors have been surveyed. "As-built" drawings showing the existing anchorage and equipment weights have been completed. An analysis procedure has been prepared using a computer program to determine the minimum size and number of anchor bolts required to safely secure all Class IE assemblies during a seismic event. The bases for this analysis are as described in the February 7, 1980 action plan. Presently 30% of the assemblies have been analyzed. The remaining assemblies will be analyzed by November 1980. Those assemblies found to have marginally acceptable anchorages will be modified. The results of all modification and testing will be submitted by December 31, 1980. The only exception to this will be the wall mounted equipment attached to block walls. The analysis for all block wall mounted equipment will commence following the resolution of the block wall issues.

RG&E believes that its actions taken to date have resolved all questions regarding the anchorage of electrical equipment. All modifications required as a result of these actions will be completed in accordance with the schedule above. In addition, RG&E concurs with the letter submitted on behalf of the SEP Owner's Group by KMC, Inc.

Very truly yours,

*L.D. White, Jr.*

L. D. White, Jr.

