

## Appendix 8B. Figures

Figure 8-1. Single Line Diagram

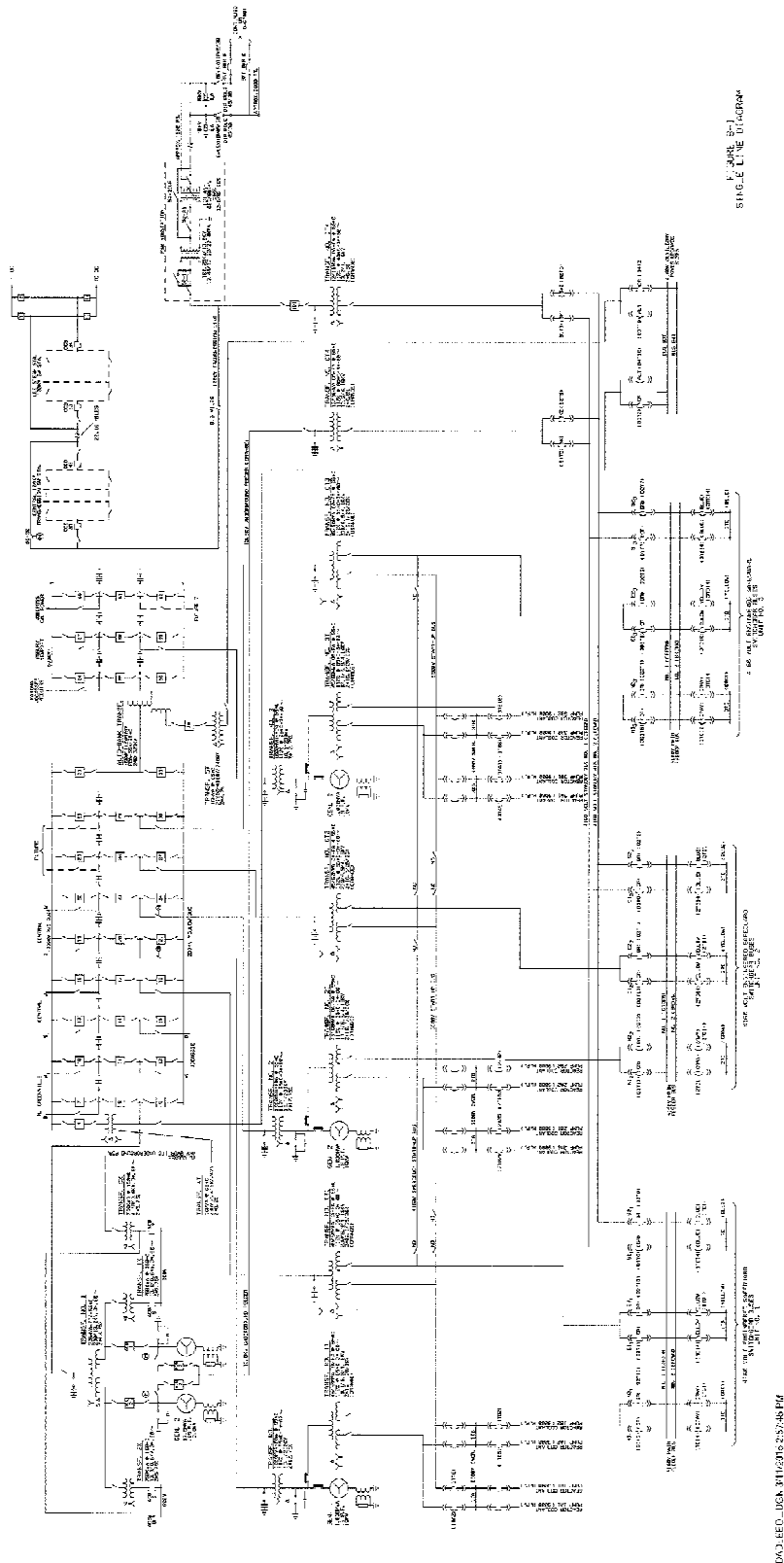


Figure 8-2. Site Transmission Map

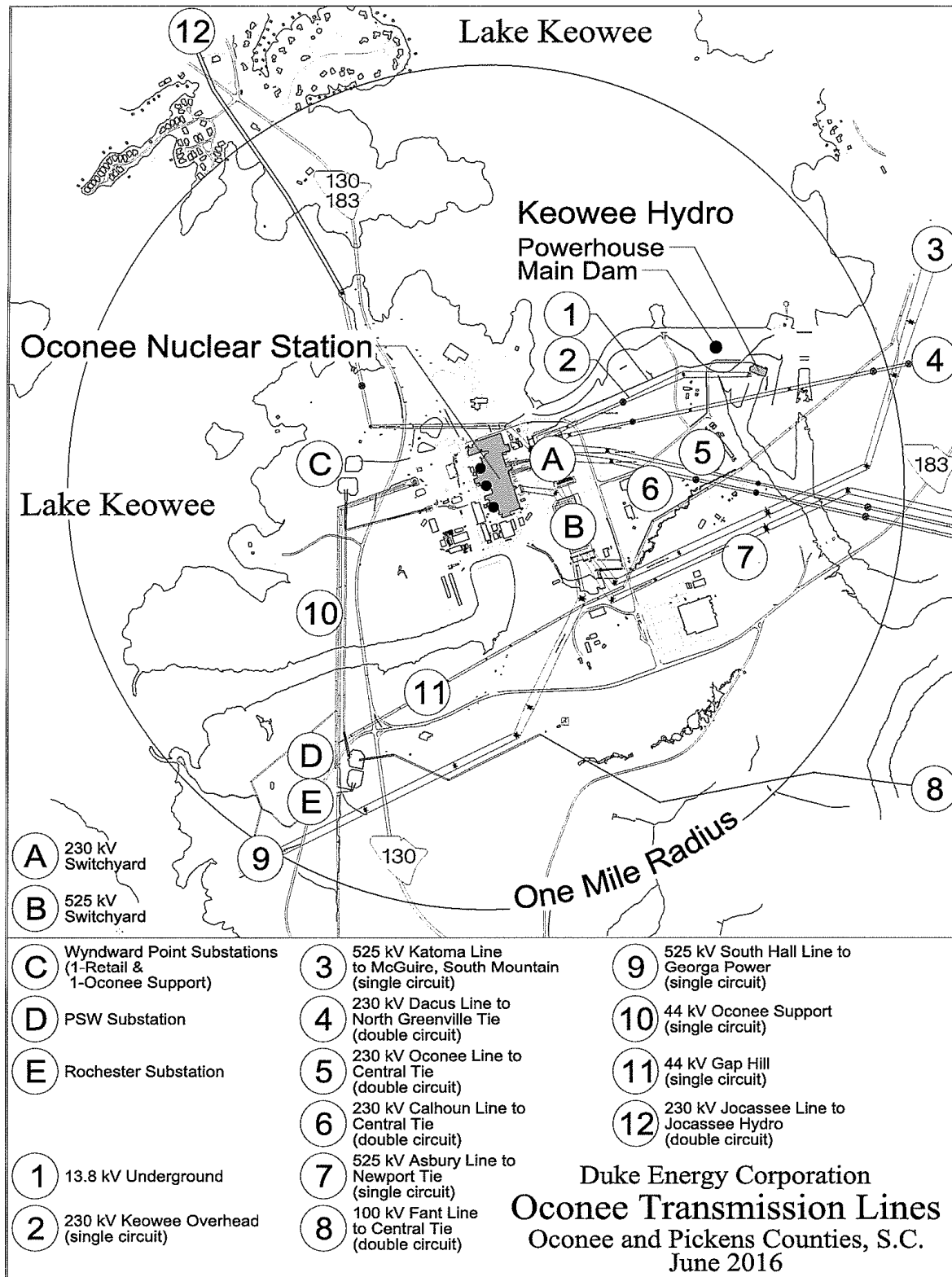


Figure 8-3. Typical 6900 Volt and 4160 Volt Unit Auxiliary - Single Line Diagram

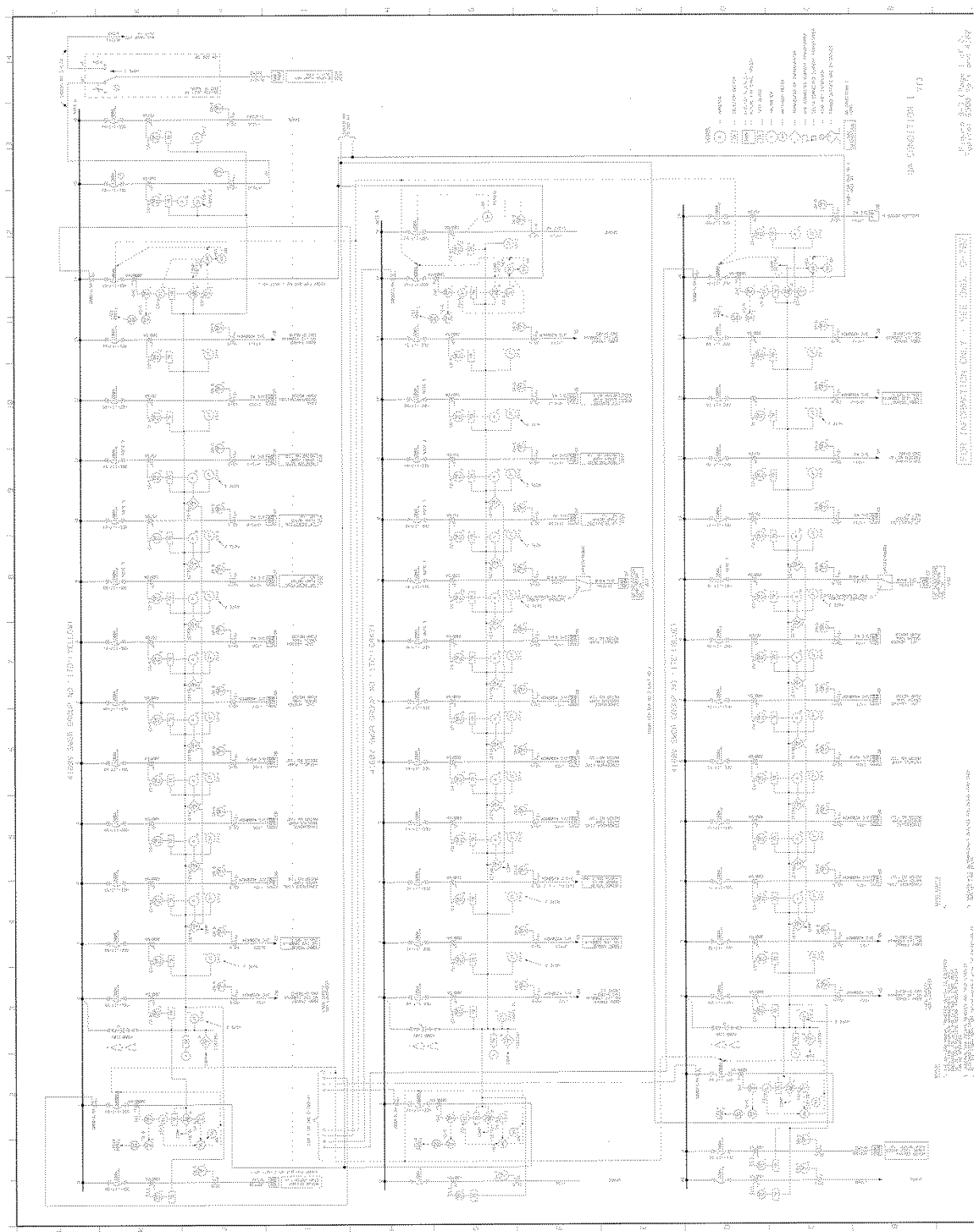
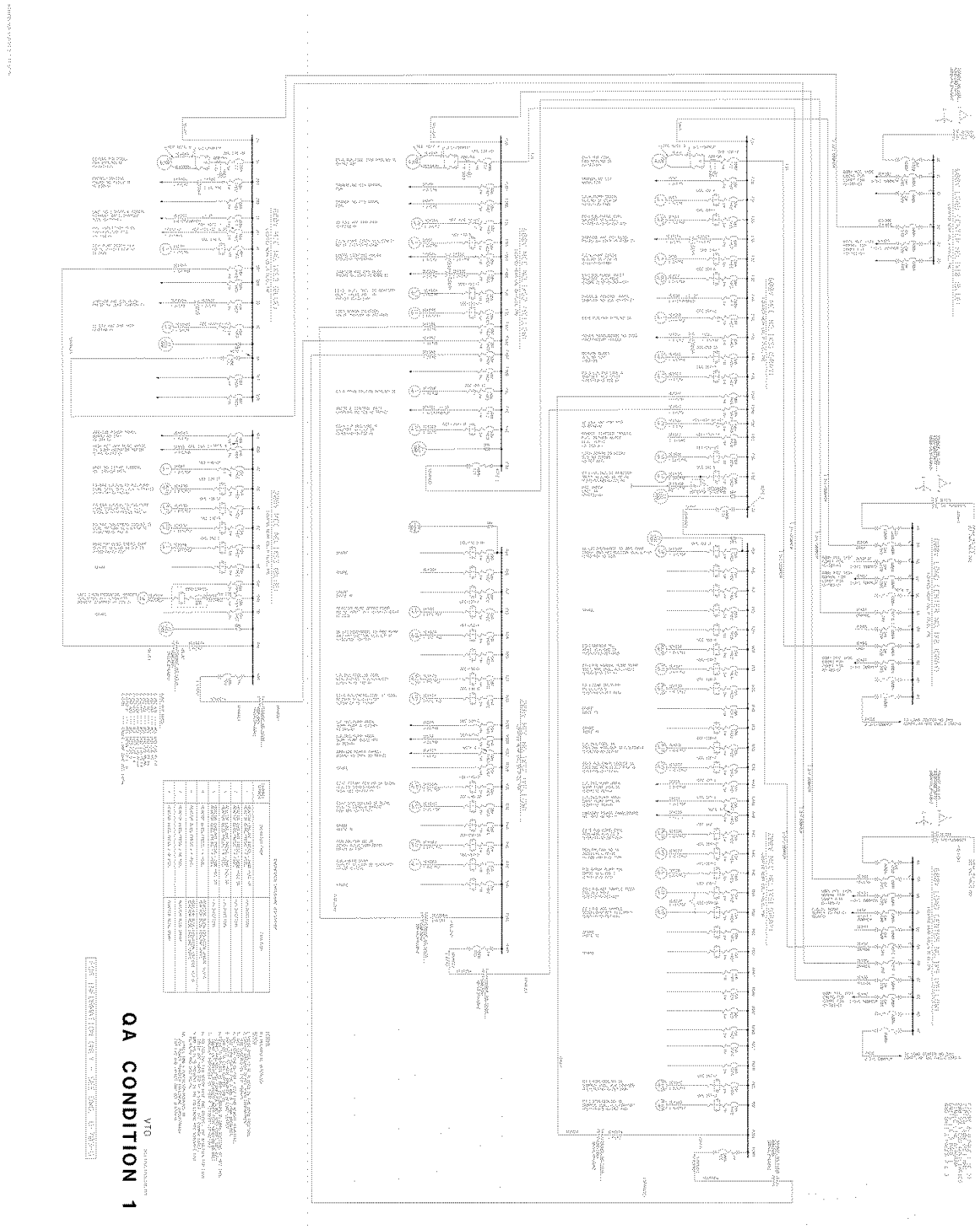
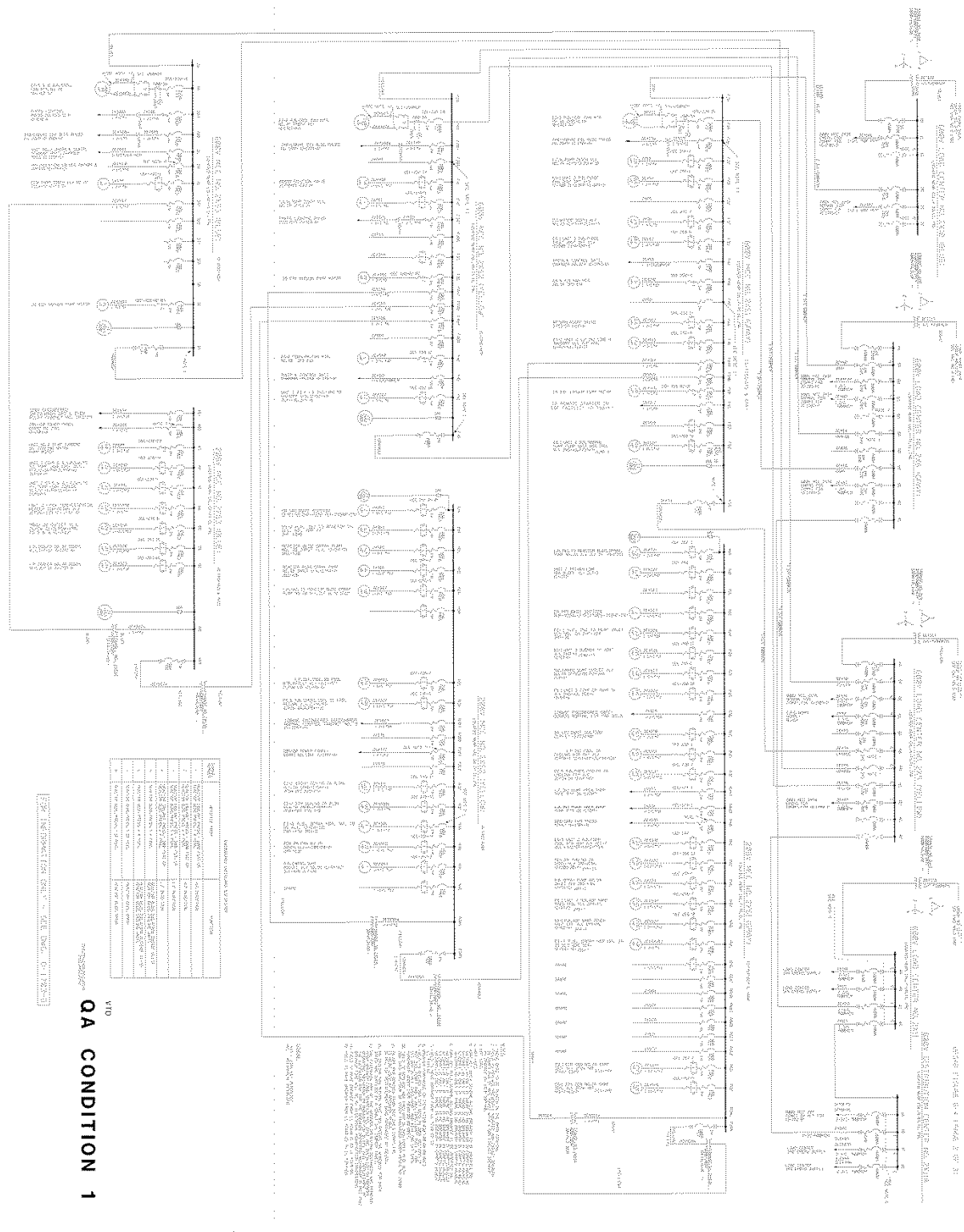




Figure 8-4. Typical 600 Volt and 208 Volt ESG Auxiliaries - Single Line Diagram





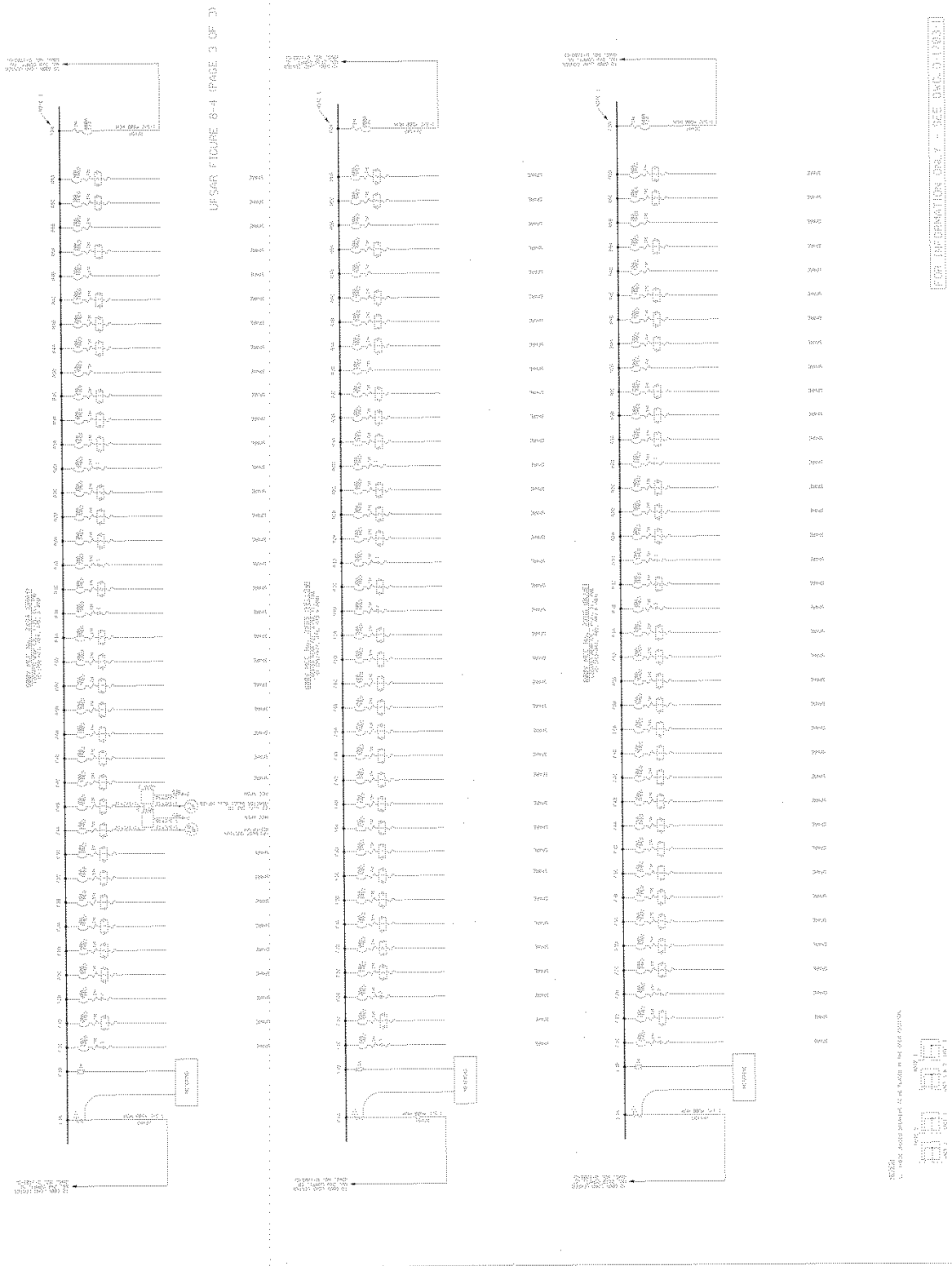




FIGURE 8-5  
TYPICAL DC AND AC VITAL POWER SYSTEM  
SINGLE LINE DIAGRAM

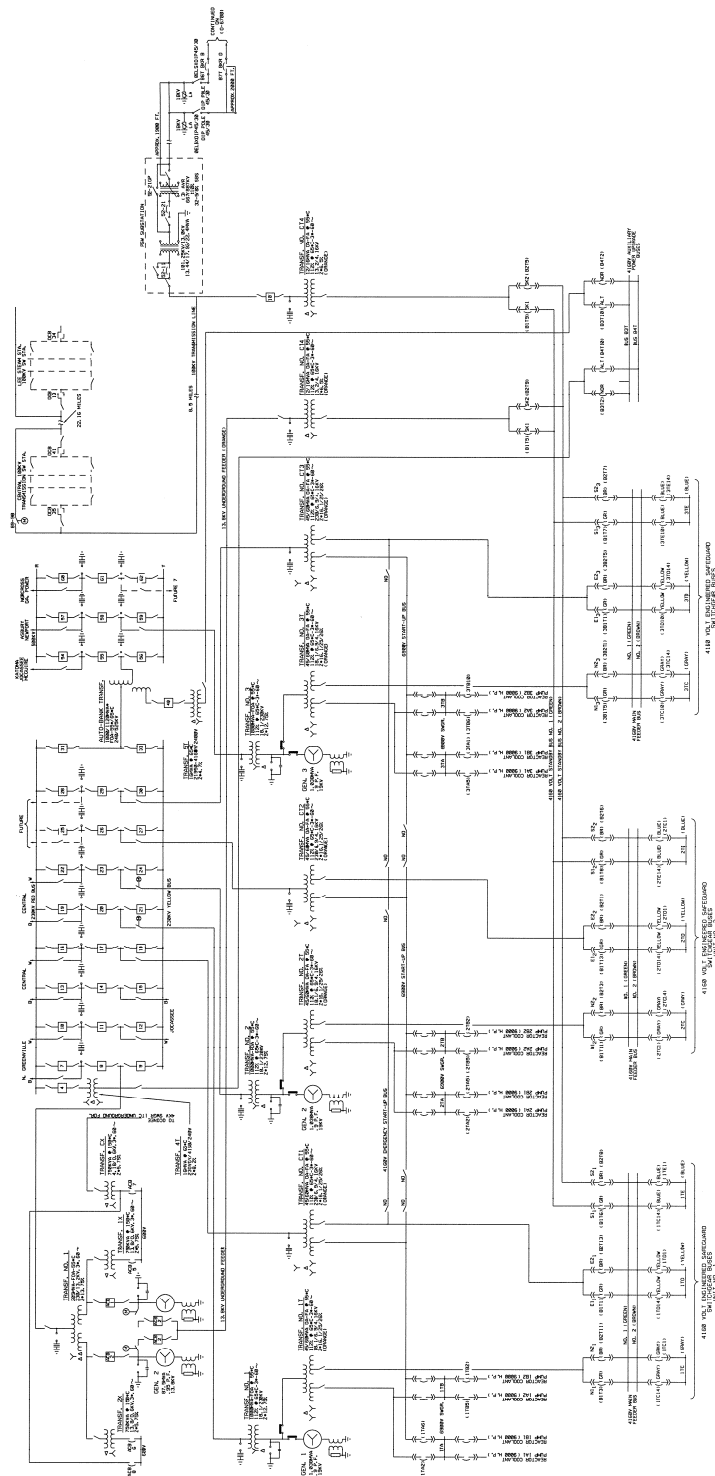
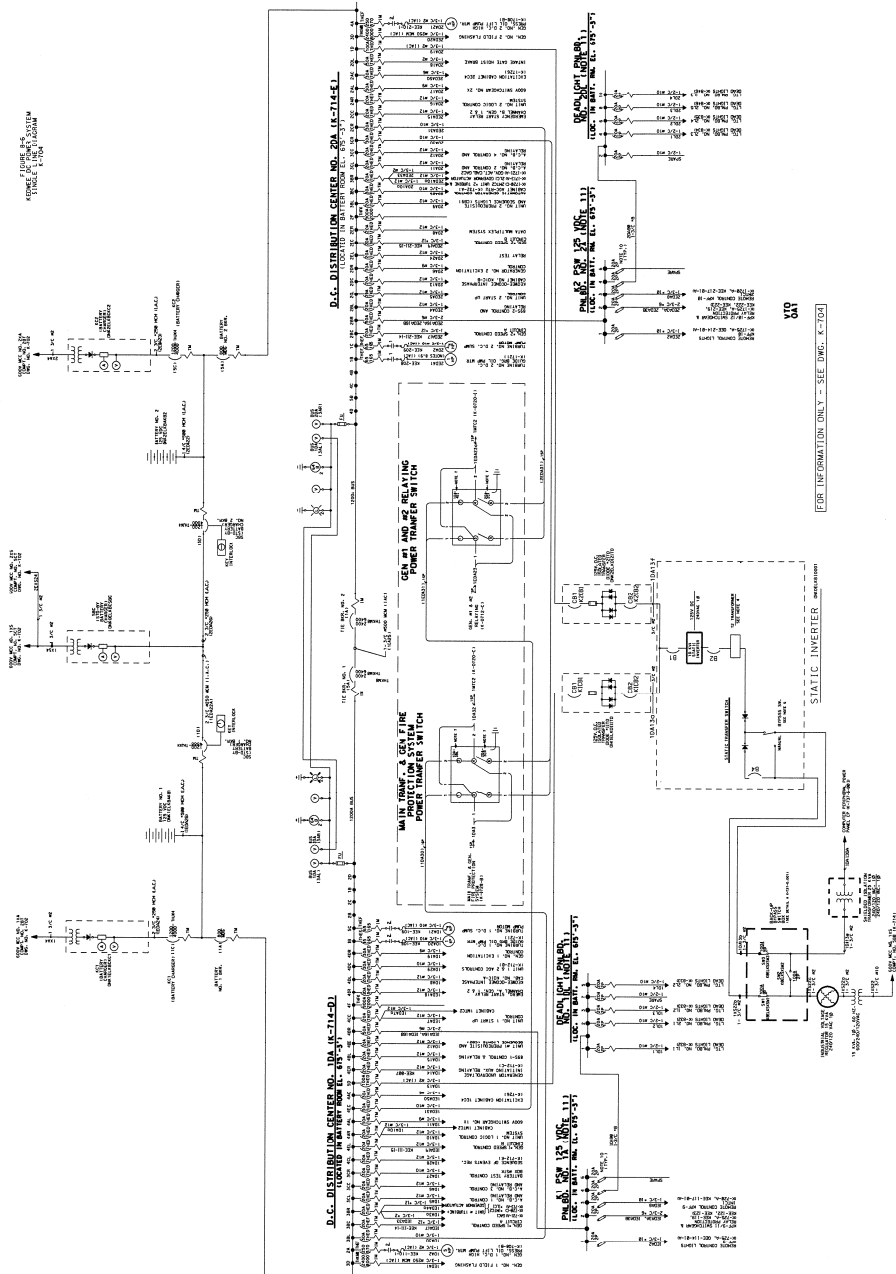


Fig8-5.DGN 2/26/2016 12:19:57 PM

Figure 8-6. Keowee DC Power System - Single Line Diagram



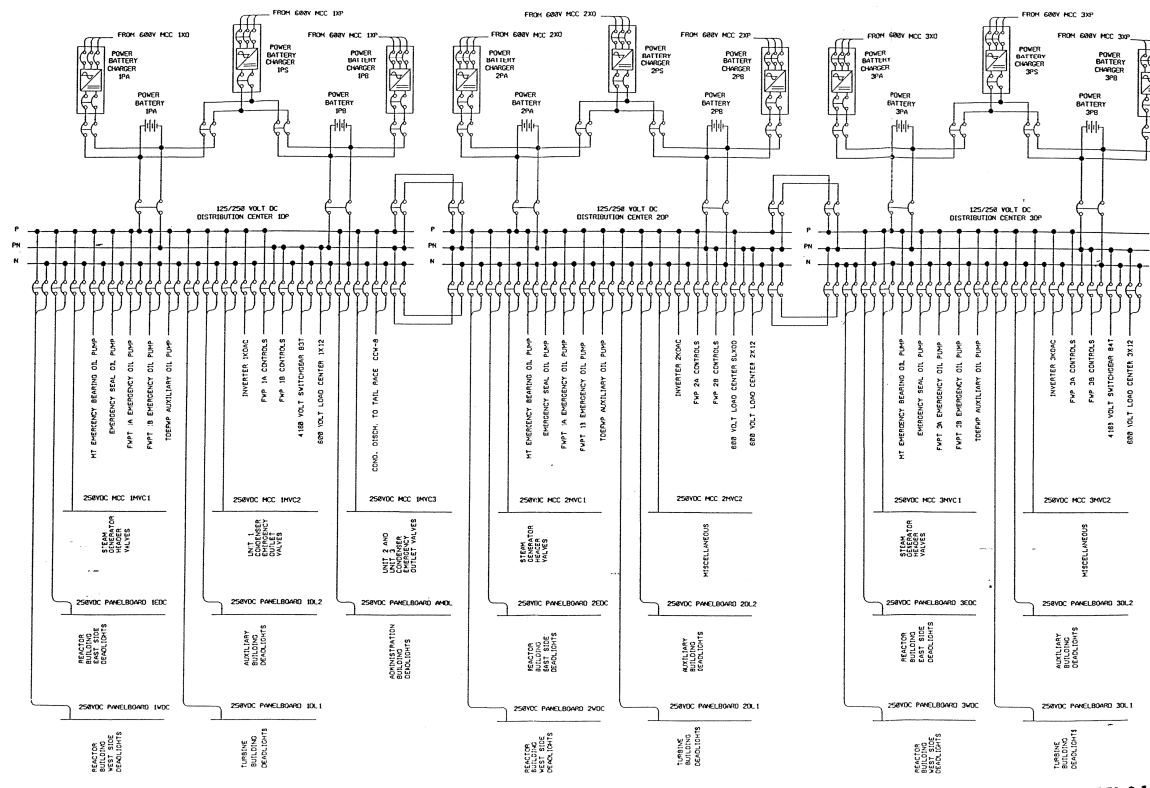
KW00038R DCH 4/10/2014 3:59:05 PM

The diagram illustrates a complex power distribution system, likely for a vehicle. It shows the connection of two batteries (BATTERY 1 and BATTERY 2) to a central power distribution center. The system includes multiple fuses (FUSE 1, FUSE 2, FUSE 3, FUSE 4, FUSE 5, FUSE 6, FUSE 7, FUSE 8, FUSE 9, FUSE 10, FUSE 11, FUSE 12, FUSE 13, FUSE 14, FUSE 15, FUSE 16, FUSE 17, FUSE 18, FUSE 19, FUSE 20, FUSE 21, FUSE 22, FUSE 23, FUSE 24, FUSE 25, FUSE 26, FUSE 27, FUSE 28, FUSE 29, FUSE 30, FUSE 31, FUSE 32, FUSE 33, FUSE 34, FUSE 35, FUSE 36, FUSE 37, FUSE 38, FUSE 39, FUSE 40, FUSE 41, FUSE 42, FUSE 43, FUSE 44, FUSE 45, FUSE 46, FUSE 47, FUSE 48, FUSE 49, FUSE 50, FUSE 51, FUSE 52, FUSE 53, FUSE 54, FUSE 55, FUSE 56, FUSE 57, FUSE 58, FUSE 59, FUSE 60, FUSE 61, FUSE 62, FUSE 63, FUSE 64, FUSE 65, FUSE 66, FUSE 67, FUSE 68, FUSE 69, FUSE 70, FUSE 71, FUSE 72, FUSE 73, FUSE 74, FUSE 75, FUSE 76, FUSE 77, FUSE 78, FUSE 79, FUSE 80, FUSE 81, FUSE 82, FUSE 83, FUSE 84, FUSE 85, FUSE 86, FUSE 87, FUSE 88, FUSE 89, FUSE 90, FUSE 91, FUSE 92, FUSE 93, FUSE 94, FUSE 95, FUSE 96, FUSE 97, FUSE 98, FUSE 99, FUSE 100) and switches (SWITCH 1, SWITCH 2, SWITCH 3, SWITCH 4, SWITCH 5, SWITCH 6, SWITCH 7, SWITCH 8, SWITCH 9, SWITCH 10, SWITCH 11, SWITCH 12, SWITCH 13, SWITCH 14, SWITCH 15, SWITCH 16, SWITCH 17, SWITCH 18, SWITCH 19, SWITCH 20, SWITCH 21, SWITCH 22, SWITCH 23, SWITCH 24, SWITCH 25, SWITCH 26, SWITCH 27, SWITCH 28, SWITCH 29, SWITCH 30, SWITCH 31, SWITCH 32, SWITCH 33, SWITCH 34, SWITCH 35, SWITCH 36, SWITCH 37, SWITCH 38, SWITCH 39, SWITCH 40, SWITCH 41, SWITCH 42, SWITCH 43, SWITCH 44, SWITCH 45, SWITCH 46, SWITCH 47, SWITCH 48, SWITCH 49, SWITCH 50, SWITCH 51, SWITCH 52, SWITCH 53, SWITCH 54, SWITCH 55, SWITCH 56, SWITCH 57, SWITCH 58, SWITCH 59, SWITCH 60, SWITCH 61, SWITCH 62, SWITCH 63, SWITCH 64, SWITCH 65, SWITCH 66, SWITCH 67, SWITCH 68, SWITCH 69, SWITCH 70, SWITCH 71, SWITCH 72, SWITCH 73, SWITCH 74, SWITCH 75, SWITCH 76, SWITCH 77, SWITCH 78, SWITCH 79, SWITCH 80, SWITCH 81, SWITCH 82, SWITCH 83, SWITCH 84, SWITCH 85, SWITCH 86, SWITCH 87, SWITCH 88, SWITCH 89, SWITCH 90, SWITCH 91, SWITCH 92, SWITCH 93, SWITCH 94, SWITCH 95, SWITCH 96, SWITCH 97, SWITCH 98, SWITCH 99, SWITCH 100). The diagram also shows the wiring harness (WIRING HARNESS 1, WIRING HARNESS 2, WIRING HARNESS 3, WIRING HARNESS 4, WIRING HARNESS 5, WIRING HARNESS 6, WIRING HARNESS 7, WIRING HARNESS 8, WIRING HARNESS 9, WIRING HARNESS 10, WIRING HARNESS 11, WIRING HARNESS 12, WIRING HARNESS 13, WIRING HARNESS 14, WIRING HARNESS 15, WIRING HARNESS 16, WIRING HARNESS 17, WIRING HARNESS 18, WIRING HARNESS 19, WIRING HARNESS 20, WIRING HARNESS 21, WIRING HARNESS 22, WIRING HARNESS 23, WIRING HARNESS 24, WIRING HARNESS 25, WIRING HARNESS 26, WIRING HARNESS 27, WIRING HARNESS 28, WIRING HARNESS 29, WIRING HARNESS 30, WIRING HARNESS 31, WIRING HARNESS 32, WIRING HARNESS 33, WIRING HARNESS 34, WIRING HARNESS 35, WIRING HARNESS 36, WIRING HARNESS 37, WIRING HARNESS 38, WIRING HARNESS 39, WIRING HARNESS 40, WIRING HARNESS 41, WIRING HARNESS 42, WIRING HARNESS 43, WIRING HARNESS 44, WIRING HARNESS 45, WIRING HARNESS 46, WIRING HARNESS 47, WIRING HARNESS 48, WIRING HARNESS 49, WIRING HARNESS 50, WIRING HARNESS 51, WIRING HARNESS 52, WIRING HARNESS 53, WIRING HARNESS 54, WIRING HARNESS 55, WIRING HARNESS 56, WIRING HARNESS 57, WIRING HARNESS 58, WIRING HARNESS 59, WIRING HARNESS 60, WIRING HARNESS 61, WIRING HARNESS 62, WIRING HARNESS 63, WIRING HARNESS 64, WIRING HARNESS 65, WIRING HARNESS 66, WIRING HARNESS 67, WIRING HARNESS 68, WIRING HARNESS 69, WIRING HARNESS 70, WIRING HARNESS 71, WIRING HARNESS 72, WIRING HARNESS 73, WIRING HARNESS 74, WIRING HARNESS 75, WIRING HARNESS 76, WIRING HARNESS 77, WIRING HARNESS 78, WIRING HARNESS 79, WIRING HARNESS 80, WIRING HARNESS 81, WIRING HARNESS 82, WIRING HARNESS 83, WIRING HARNESS 84, WIRING HARNESS 85, WIRING HARNESS 86, WIRING HARNESS 87, WIRING HARNESS 88, WIRING HARNESS 89, WIRING HARNESS 90, WIRING HARNESS 91, WIRING HARNESS 92, WIRING HARNESS 93, WIRING HARNESS 94, WIRING HARNESS 95, WIRING HARNESS 96, WIRING HARNESS 97, WIRING HARNESS 98, WIRING HARNESS 99, WIRING HARNESS 100). The diagram includes a legend for wire colors (WIRE COLOR 1, WIRE COLOR 2, WIRE COLOR 3, WIRE COLOR 4, WIRE COLOR 5, WIRE COLOR 6, WIRE COLOR 7, WIRE COLOR 8, WIRE COLOR 9, WIRE COLOR 10, WIRE COLOR 11, WIRE COLOR 12, WIRE COLOR 13, WIRE COLOR 14, WIRE COLOR 15, WIRE COLOR 16, WIRE COLOR 17, WIRE COLOR 18, WIRE COLOR 19, WIRE COLOR 20, WIRE COLOR 21, WIRE COLOR 22, WIRE COLOR 23, WIRE COLOR 24, WIRE COLOR 25, WIRE COLOR 26, WIRE COLOR 27, WIRE COLOR 28, WIRE COLOR 29, WIRE COLOR 30, WIRE COLOR 31, WIRE COLOR 32, WIRE COLOR 33, WIRE COLOR 34, WIRE COLOR 35, WIRE COLOR 36, WIRE COLOR 37, WIRE COLOR 38, WIRE COLOR 39, WIRE COLOR 40, WIRE COLOR 41, WIRE COLOR 42, WIRE COLOR 43, WIRE COLOR 44, WIRE COLOR 45, WIRE COLOR 46, WIRE COLOR 47, WIRE COLOR 48, WIRE COLOR 49, WIRE COLOR 50, WIRE COLOR 51, WIRE COLOR 52, WIRE COLOR 53, WIRE COLOR 54, WIRE COLOR 55, WIRE COLOR 56, WIRE COLOR 57, WIRE COLOR 58, WIRE COLOR 59, WIRE COLOR 60, WIRE COLOR 61, WIRE COLOR 62, WIRE COLOR 63, WIRE COLOR 64, WIRE COLOR 65, WIRE COLOR 66, WIRE COLOR 67, WIRE COLOR 68, WIRE COLOR 69, WIRE COLOR 70, WIRE COLOR 71, WIRE COLOR 72, WIRE COLOR 73, WIRE COLOR 74, WIRE COLOR 75, WIRE COLOR 76, WIRE COLOR 77, WIRE COLOR 78, WIRE COLOR 79, WIRE COLOR 80, WIRE COLOR 81, WIRE COLOR 82, WIRE COLOR 83, WIRE COLOR 84, WIRE COLOR 85, WIRE COLOR 86, WIRE COLOR 87, WIRE COLOR 88, WIRE COLOR 89, WIRE COLOR 90, WIRE COLOR 91, WIRE COLOR 92, WIRE COLOR 93, WIRE COLOR 94, WIRE COLOR 95, WIRE COLOR 96, WIRE COLOR 97, WIRE COLOR 98, WIRE COLOR 99, WIRE COLOR 100) and a note about the drawing being for information only.

FOR INFORMATION ONLY - SEE DWG. 0-802

**Figure 8-8. Deleted Per 1997 Update**

### Figure 8-9. 125/250 VDC Station Aux. Circuits



NOTE:  
1. LOADS SHOWN ARE MAJOR LOADS  
AND NOT INCLUSIVE OF ALL LOADS.

DEC 8 1 2000

FIGURE 8-9  
125/250 VDC STATION AUX. CIRCUITS