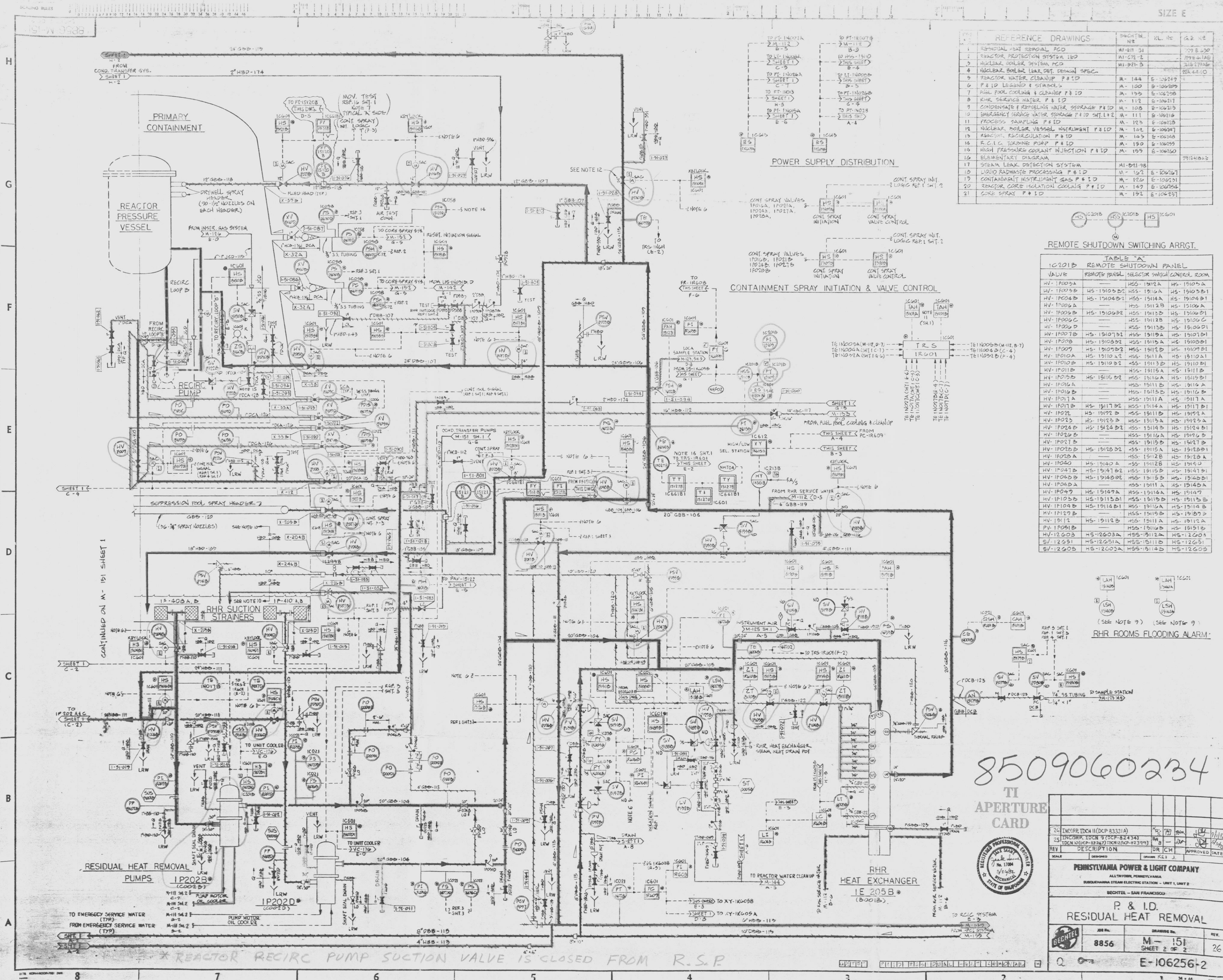


- COOLANT FLOW PATHS
- FLOW DIVERSION PATHS
- SUPPORT SYSTEMS
- REQUIRED COMPONENTS

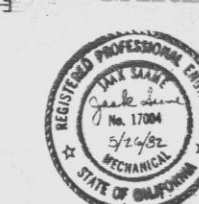


NO.	REFERENCE DRAWINGS	DRAWING NO.	REV.	DATE
1	REACTOR TAIL REMOVAL P.I.D	AW-011	1	7/25/54
2	REACTOR PROTECTION SYSTEM P.I.D	AW-071	2	7/25/54
3	NUCLEAR COOLER SYSTEM P.I.D	AW-021-5	1	7/25/54
4	NUCLEAR BOILER	AW-021-5	1	7/25/54
5	REACTOR WATER CIRCUMPUMP P.I.D	AW-144	5	7/25/54
6	P.I.D LOGGING & STIMULUS	AW-120	10	7/25/54
7	PIUM COOLANT & CLEANUP P.I.D	AW-125	5	7/25/54
8	RHR SERVICES WATER P.I.D	AW-112	12	7/25/54
9	CONDENSATE THERMAL WATER STORAGE P.I.D	AW-108	10	7/25/54
10	EMERGENCY SERVICE WATER P.I.D	AW-107	10	7/25/54
11	PROCESS SAMPLING P.I.D	AW-125	5	7/25/54
12	NUCLEAR BOILER VESSEL INSTRUMENT P.I.D	AW-125	6	7/25/54
13	REACTOR REGULATOR P.I.D	AW-103	10	7/25/54
14	R.C.G. TURBINE PUMP P.I.D	AW-150	10	7/25/54
15	HIGH PRESSURE COOLANT INJECTION P.I.D	AW-159	10	7/25/54
16	ELEMENTARY DIAGRAM			
17	STEAM LEAK DETECTION SYSTEM	AW-021-38	10	7/25/54
18	LIQUID RADIATION PROCESSING P.I.D	AW-122	5	7/25/54
19	CONTAMINANT INSTRUMENT GAS P.I.D	AW-147	10	7/25/54
20	REACTOR CORE ISOLATION COOLING P.I.D	AW-147	10	7/25/54
21	COKE SPRAY P.I.D	AW-192	5	7/25/54

REMOTE SHUTDOWN SWITCHING ARRGT

VALUE	REMOTE PANEL	SELECTOR SWITCH	CONTROL ROOM
HS-1P002A	HS-1910A2	HS-1912A	HS-1910A3
HS-1P003A	HS-1910B2	HS-1912A	HS-1910B3
HS-1P004A	HS-1910B2	HS-1912A	HS-1910B3
HS-1P005A	HS-1910B2	HS-1912A	HS-1910B3
HS-1P006G	—	HS-1911B2	HS-1910C3
HS-1P007A	HS-1910B2	HS-1912A	HS-1910B3
HS-1P008A	HS-1910B2	HS-1912A	HS-1910B3
HS-1P009	HS-1910B2	HS-1912B2	HS-1910B3
HS-1P010A	HS-1910A2	HS-1911A	HS-1910A3
HS-1P011A	HS-1910B2	HS-1912A	HS-1910B3
HS-1P012A	HS-1910B2	HS-1912A	HS-1910B3
HS-1P013A	HS-1910B2	HS-1912A	HS-1910B3
HS-1P014A	HS-1910B2	HS-1912A	HS-1910B3
HS-1P015A	HS-1910B2	HS-1912A	HS-1910B3
HS-1P016A	HS-1910B2	HS-1912A	HS-1910B3
HS-1P017A	HS-1910B2	HS-1912A	HS-1910B3
HS-1P018A	HS-1910B2	HS-1912A	HS-1910B3
HS-1P019A	HS-1910B2	HS-1912A	HS-1910B3
HS-1P020A	HS-1910B2	HS-1912A	HS-1910B3
HS-1P021A	HS-1910B2	HS-1912A	HS-1910B3
HS-1P022A	HS-1910B2	HS-1912A	HS-1910B3
HS-1P023A	HS-1910B2	HS-1912A	HS-1910B3
HS-1P024A	HS-1910B2	HS-1912A	HS-1910B3
HS-1P025A	HS-1910B2	HS-1912A	HS-1910B3
HS-1P026A	HS-1910B2	HS-1912A	HS-1910B3
HS-1P027A	HS-1910B2	HS-1912A	HS-1910B3
HS-1P028A	HS-1910B2	HS-1912A	HS-1910B3
HS-1P029A	HS-1910B2	HS-1912A	HS-1910B3
HS-1P030A	HS-1910B2	HS-1912A	HS-1910B3
HS-1P031A	HS-1910B2	HS-1912A	HS-1910B3
HS-1P032A	HS-1910B2	HS-1912A	HS-1910B3
HS-1P033A	HS-1910B2	HS-1912A	HS-1910B3
HS-1P034A	HS-1910B2	HS-1912A	HS-1910B3
HS-1P035A	HS-1910B2	HS-1912A	HS-1910B3
HS-1P036A	HS-1910B2	HS-1912A	HS-1910B3
HS-1P037A	HS-1910B2	HS-1912A	HS-1910B3
HS-1P038A	HS-1910B2	HS-1912A	HS-1910B3
HS-1P039A	HS-1910B2	HS-1912A	HS-1910B3
HS-1P040A	HS-1910B2	HS-1912A	HS-1910B3
HS-1P041A	HS-1910B2	HS-1912A	HS-1910B3
HS-1P042A	HS-1910B2	HS-1912A	HS-1910B3
HS-1P043A	HS-1910B2	HS-1912A	HS-1910B3
HS-1P044A	HS-1910B2	HS-1912A	HS-1910B3
HS-1P045A	HS-1910B2	HS-1912A	HS-1910B3
HS-1P046A	HS-1910B2	HS-1912A	HS-1910B3
HS-1P047A	HS-1910B2	HS-1912A	HS-1910B3
HS-1P048A	HS-1910B2	HS-1912A	HS-1910B3
HS-1P049A	HS-1910B2	HS-1912A	HS-1910B3
HS-1P050A	HS-1910B2	HS-1912A	HS-1910B3
HS-1P051A	HS-1910B2	HS-1912A	HS-1910B3
HS-1P052A	HS-1910B2	HS-1912A	HS-1910B3
HS-1P053A	HS-1910B2	HS-1912A	HS-1910B3
HS-1P054A	HS-1910B2	HS-1912A	HS-1910B3
HS-1P055A	HS-1910B2	HS-1912A	HS-1910B3
HS-1P056A	HS-1910B2	HS-1912A	HS-1910B3
HS-1P057A	HS-1910B2	HS-1912A	HS-1910B3
HS-1P058A	HS-1910B2	HS-1912A	HS-1910B3
HS-1P059A	HS-1910B2	HS-1912A	HS-1910B3
HS-1P060A	HS-1910B2	HS-1912A	HS-1910B3
HS-1P061A	HS-1910B2	HS-1912A	HS-1910B3
HS-1P062A	HS-1910B2	HS-1912A	HS-1910B3
HS-1P063A	HS-1910B2	HS-1912A	HS-1910B3
HS-1P064A	HS-1910B2	HS-1912A	HS-1910B3
HS-1P065A	HS-1910B2	HS-1912A	HS-1910B3
HS-1P066A	HS-1910B2	HS-1912A	HS-1910B3
HS-1P067A	HS-1910B2	HS-1912A	HS-1910B3
HS-1P068A	HS-1910B2	HS-1912A	HS-1910B3
HS-1P069A	HS-1910B2	HS-1912A	HS-1910B3
HS-1P070A	HS-1910B2	HS-1912A	HS-1910B3
HS-1P071A	HS-1910B2	HS-1912A	HS-1910B3
HS-1P072A	HS-1910B2	HS-1912A	HS


RHR ROOMS FLOODING ALARM

[illegible]

74	INCAR IDON 11(DCP 8333 A)						
75	UNCLAS INCAR 10(CDP 132 9 A)						
76	IDON 01(CD 132 9 T) IDON 02(CP 213 9)						
REV	DESCRIPTION	DR	ICH	APPROV			
SOME		VLT					

**PENNSYLVANIA POWER & LIGHT COMPANY**  
ALLIANT ENERGY SERVICES  
BUSHKAMANA TEAM ELECTRIC SYSTEMS - UNIT 1, UNIT 2  
BECHTEL - SAN FRANCISCO

**R. P. I.D.**  
**RESIDUAL HEAT REMOVAL**



JOB NO.  
**8856**

DRAWING NO.  
**M - 151**  
**SHEET 2 OF 2**

E-106256