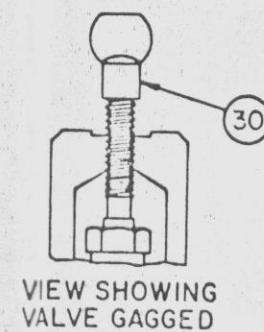
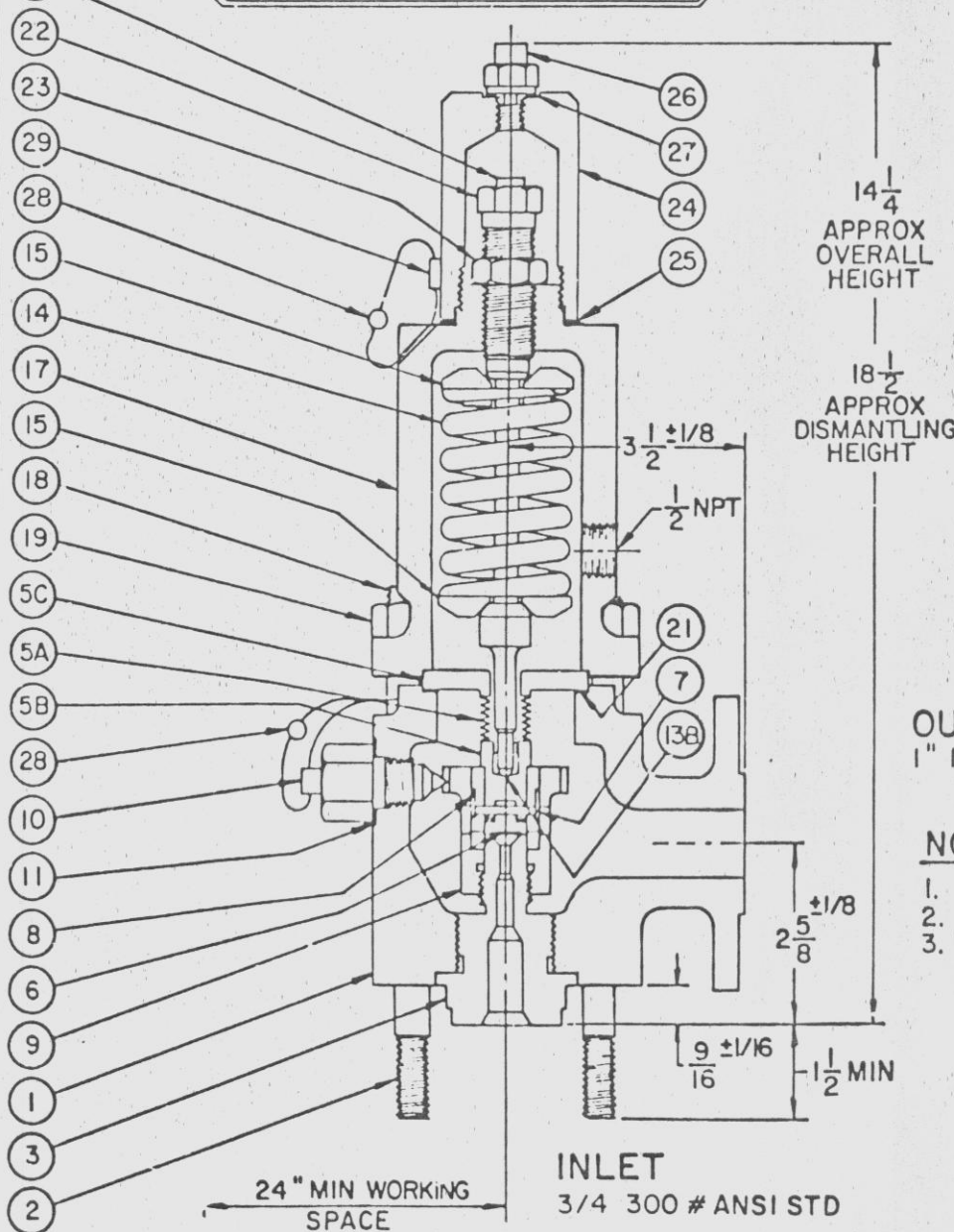
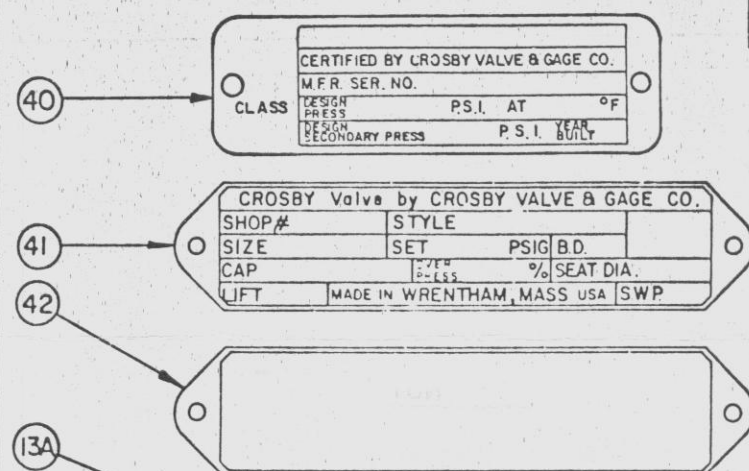
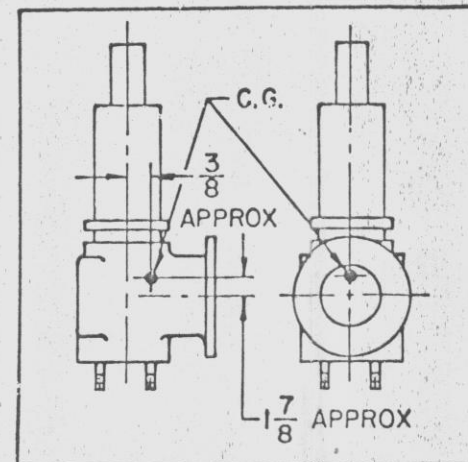


REV	DESCRIPTION	BY	CHK.	APPROVED



OUTLET
1" 150 # ANSI STD.

NOTES-

1. RECOMMENDED SPARE PIECE
2. PRESSURE RETAINING PIECE
3. CERTIFICATION OF MATERIAL AND NON-DESTRUCTIVE TESTING IN ACCORDANCE WITH CROSBY QAI-32070.

LIST OF MATERIALS

PC NO	DESCRIPTION	NO REQD	MATERIAL	MAT'L SPEC.	SEE NOTES	REMARKS
1	BODY	1	CARBON STEEL	ASME SA216 GR WCB	2,3	
2	INLET STUD	4	ALLOY STEEL	ASME SA193 GR B7	2,3	
3	NOZZLE	1	SST	ASME SA479 TYPE 304	1,2,3	
5	A BELLOWS	1	SST	300 SERIES	1	
	B DISC HOLDER	1	"	"	1	
	C BELLOWS ADAPTER FLG	1	"	"	1	
6	DISC INSERT	1	"	ASME SA479 TYPE 304	1,2,3	
7	" " & RING PIN	1	"	300 SERIES		
8	" RING	1	STELLITE	STELLITE NO.6B		
9	GUIDE & RING	1	NICKEL BASE ALLOY	INCONEL OR MONEL		
10	SET SCREW	1	SST	400 SERIES		
11	" " GASKET	1	STEEL	AISI 1010-1030	1	
13	A SPINDLE	1	SST	ASME SA193 GR. B6	2,3	
	B " BALL	1	"	ASTM A276 TYPE 440 C		
14	SPRING	1	NI CR FE ALLOY	ASTM B-166	1,2,3	
15	" WASHER	2	SST	ASME SA479 TYPE 410	1,2,3	
17	BONNET	1	CARBON STEEL	ASME SA105	2,3	
18	" STUD	4	ALLOY STEEL	ASME SA193 GR. B7	2,3	
19	" " NUT	4	STEEL	ASME SA194 GR. 2H	2,3	
21	BELLOWS ADAPT. GSKT	1	STEEL	AISI 1010-1030	1	
22	ADJUSTING BOLT	1	SST	ASME SA193 GR. B6	2,3	
23	" " NUT	1	STEEL	AISI 1215		
24	CAP	1	"	"		
25	" GASKET	1	"	AISI 1010-1030	1	
26	" PLUG	1	SST	400 SERIES		
27	" " GASKET	1	STEEL	AISI 1010-1030	1	
28	SEAL & WIRE	2	LEAD-STEEL	COMMERCIAL		
29	" CLIP	1	SST	300 SERIES		
30	TEST ROD	1	STEEL	AISI 1215		
40	DATA PLATE	1	SST	300 SERIES		
41	NAMEPLATE	1	"	"		
42	IDENTIFICATION PLATE	1	"	"		
43	DRIVE SCREW	6	"	"		NOT SHOWN

● FURNISHED AS SUB-ASSEMBLY ONLY

VALVE EQUIP. NOS.	ASME S CT. III CLASS	VALVE SET PRESS. PSIG	DESIGN PRESS. PSIG	DESIGN TEMP °F
2CCPXRV171	2	145	145	475

NINE MILE POINT NUCLEAR STATION-UNIT 2
NIAGARA MOHAWK POWER CORP.
SCRIBA, NEW YORK

CROSBY CUST. STONE & WEBSTER
J.O. NO. 12177
ORDER NO. NMP2-C051A
CROSBY F.O. N62773
PREPARED BY JS 3-26-85
CHECKED BY R. CHANDLER 4-10-85
APPD. BY R. CHANDLER 4-10-85

WEIGHT 32 LBS. APPROX
SIZE 3/4 XI
STYLE JRAK-BS
TYPE B
ASSEMBLY NO N68356

CROSBY VALVE & GAGE CO.
WRENTHAM, MASS. 02093
DRAWING TITLE NOZZLE TYPE RELIEF VALVE
DRAWING NO. DS-C-68356
REV 0

MT
APERTURE
CARD

STONE & WEBSTER ENGINEERING CORPORATION NINE MILE POINT NUCLEAR STATION - UNIT 2 NIAGARA MOHAWK POWER CORPORATION J.O. 12177	
INSTRUCTIONS TO SUPPLIER (E2)	
APPROVED	AS DEFINED IN SPECIFICATION
APPROVED AS REVISED	
RELEASED FOR FABRICATION	
RELEASED FOR MATERIAL PURCHASE	
SUPPLIER TO RESUBMIT	FOR REVIEW FOR RECORD NONE REQUIRED
NOTES:	
(E1) FOR INFORMATION ONLY RETURN TO SUPPLIER NOT REQUIRED	
INSTRUCTIONS TO DESIGN ENGINEER (E1)	
DESIGN ENGINEER'S DATE STAMP (D) OUT: JP	
INITIALS OF SELECTED REVIEWERS	
RESPONSIBLE ENGINEER'S DATE STAMP (E2) NOTED MAY - 2 1985 H 2210H	
SUPERSEDES S & W FILE NO (E1) (25-34) (25-38)	
REMARKS (C) (LIMIT TO 22 CHARACTERS & BLANKS) (53-74)	
S & W EQUIP. I.D. CODE (E1) (25-38)	
AREA DESIGNATION CODES (E1) (75-81)	
MFR'S. DWG. NO (C) (LIMIT TO 24 CHARACTERS & BLANKS) (57-60)	
DS-C-68356 REV 0	
MFR'S. NAME (C) (LIMIT TO 20 CHARACTERS & BLANKS) (61-80)	
CROSBY VALVE & GAGE	
DATE MONTH DAY YEAR (11-20) (21-24)	
RECD 04/26/85 TYPE I IN DESIGN 00	
FUNCTIONAL TITLE (E1) (LIMIT TO 44 CHARACTERS & BLANKS) (57-80)	
NOZZLE TYPE RELIEF VALVE	
S & W FILE NO (E1) (11-20) (21-24)	
JOB ORDER NO. 12177 00	

8601230320

D