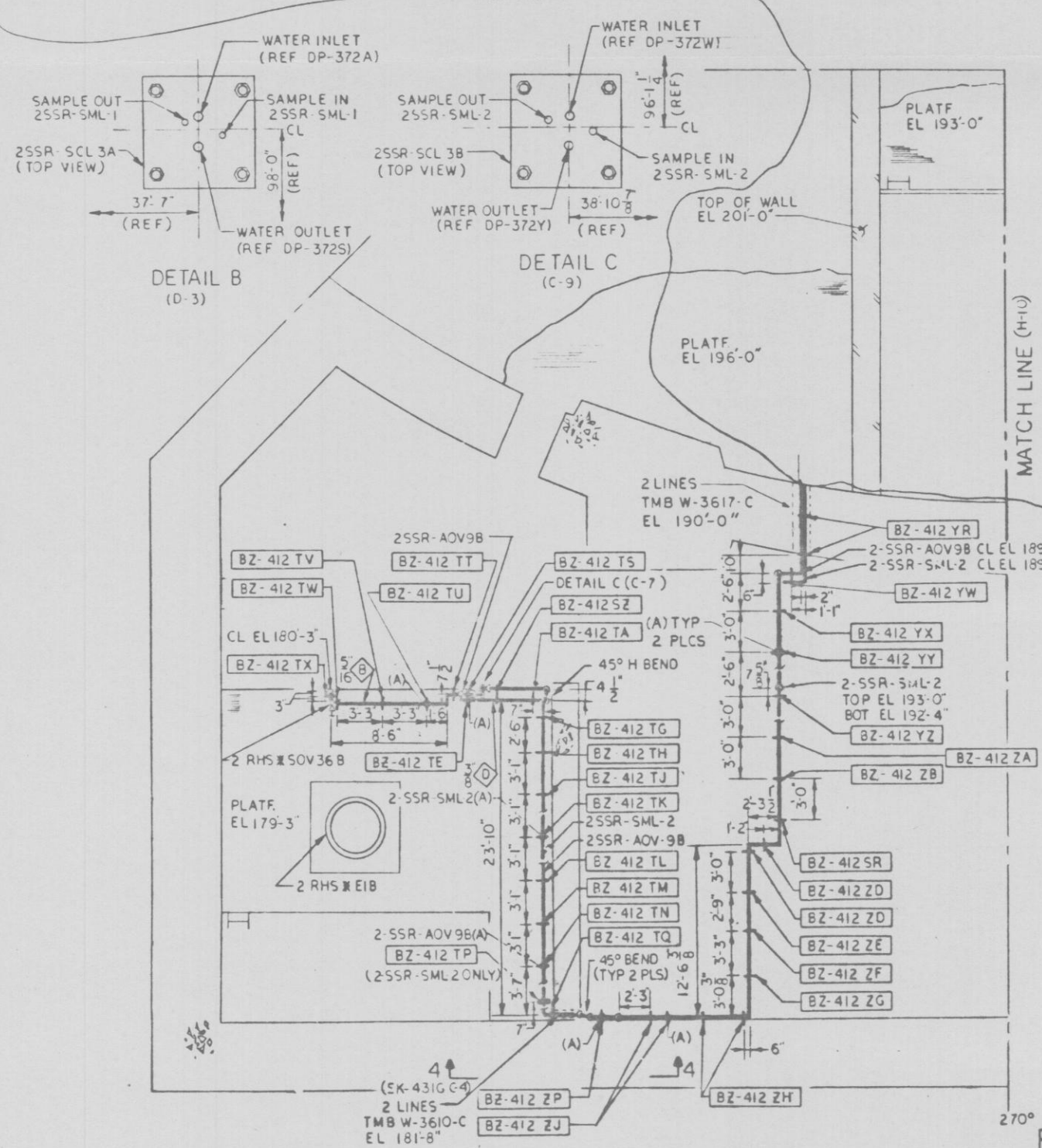
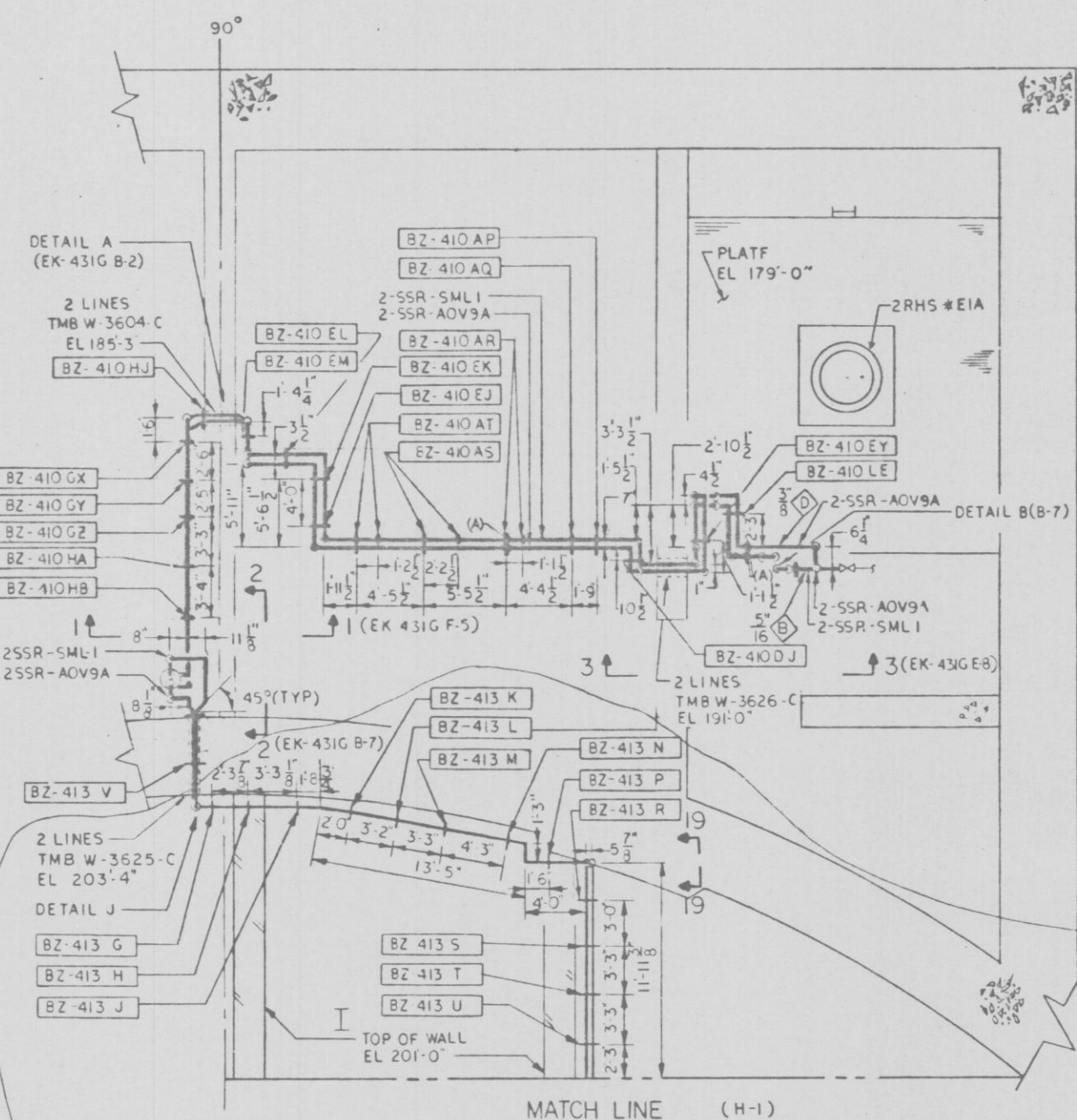
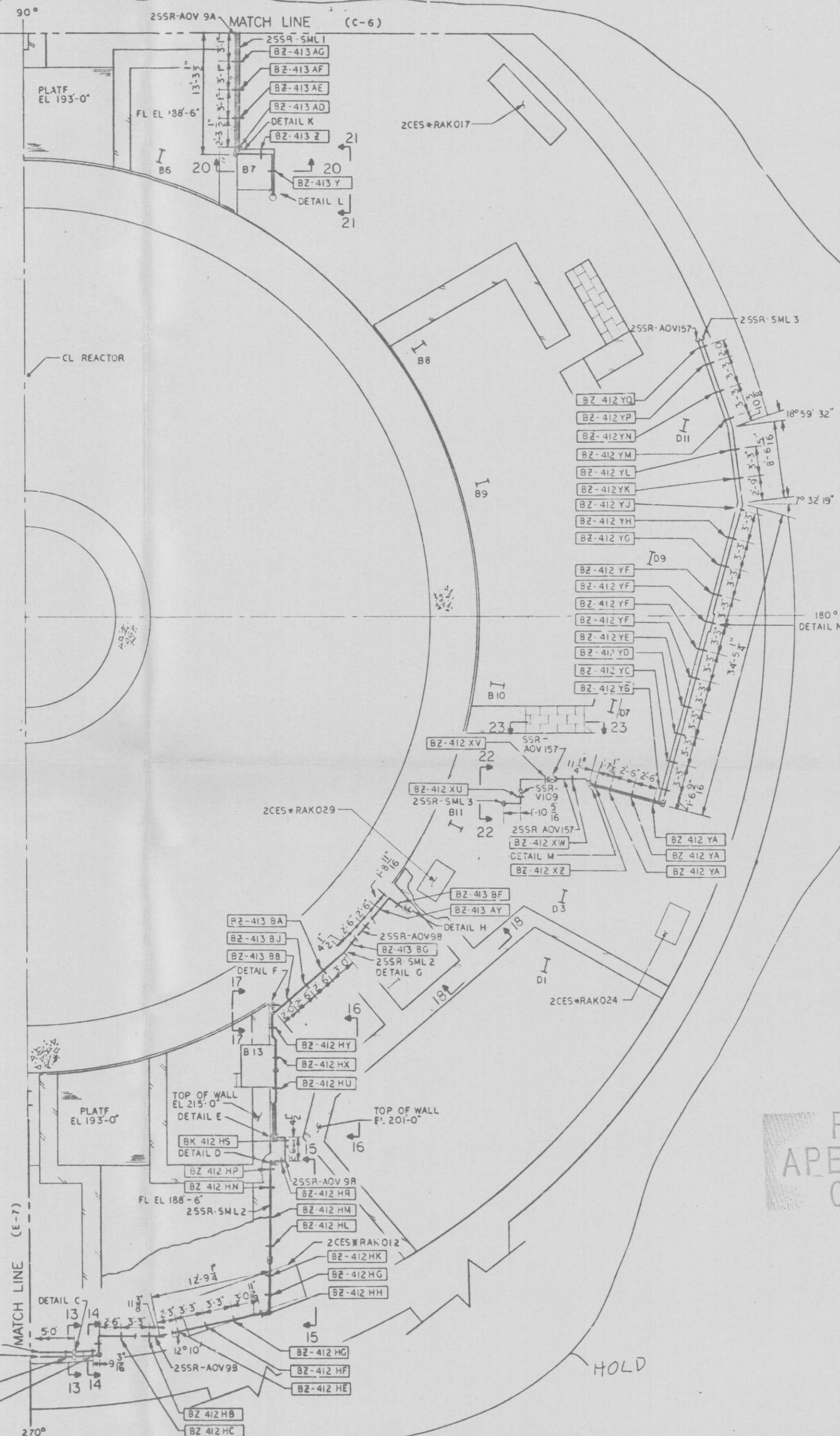


12177-EK-431A-1



PART PLANS EL 175'-0"



NOTES:
1. SCALE 3/16" = 1'-0" UNLESS OTHERWISE NOTED.
2. NOTES & REFERENCES EK-431G

PRC
APERTURE
CARD



APPROVED: R. Plutnick 5/9006
LICENSED PROFESSIONAL ENGINEER, N.Y.
STATE OF NEW YORK
ALTERATION EXCEPT BY A LICENSED PROFESSIONAL ENGINEER IN ALBANY

NUCLEAR SAFETY RELATED
QA CAT I

SAMPLE PIPING
REACTOR BUILDING
PART PLANS EL 175'-0"
NINE MILE POINT NUCLEAR STATION - UNIT 2
NIAGARA MOHAWK POWER CORPORATION
STONE & WEBSTER ENGINEERING CORPORATION
CHERRY HILL, N.J.

CH 12177-EK-431A-1

DESIGNED BY T. FOWLER DRAWN BY D. BARTHA
CHECKED BY J. SYLVESTER

DATE 1/1/81

1

81C