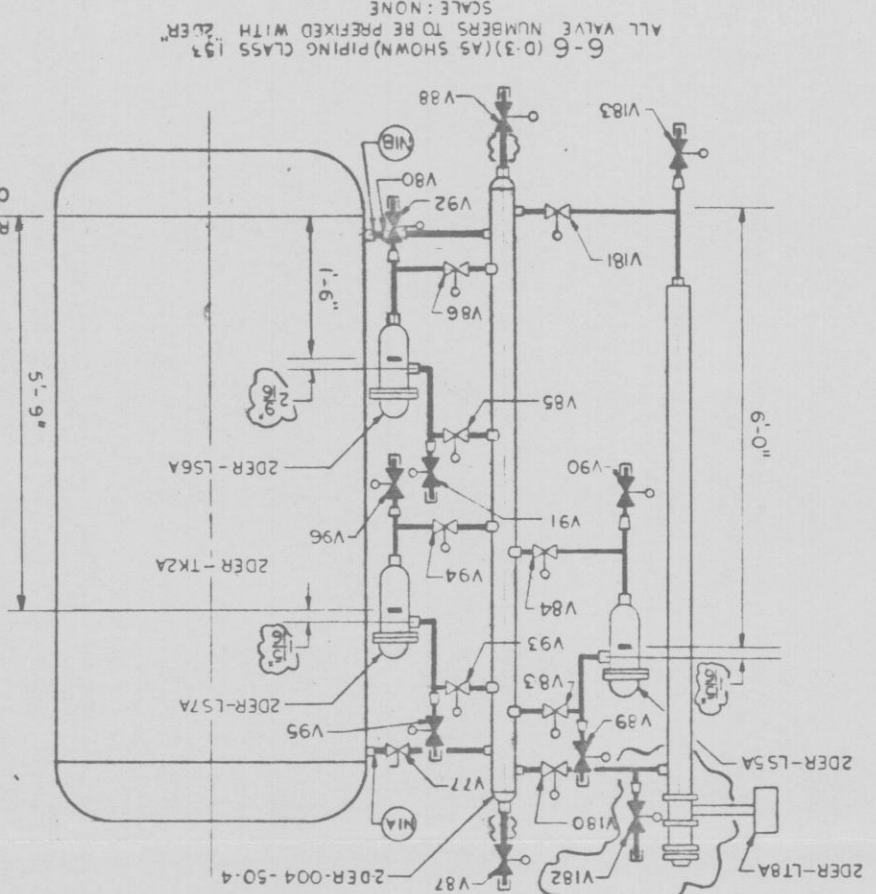
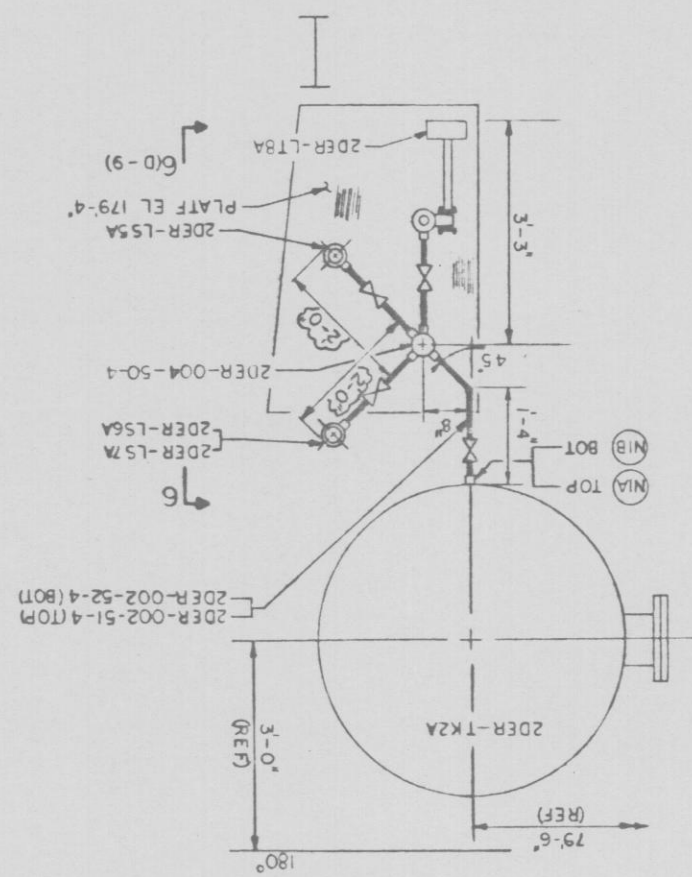
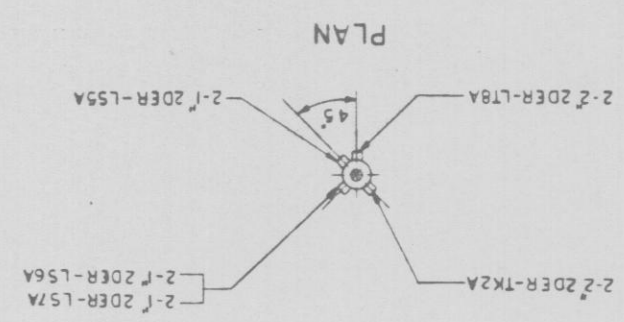


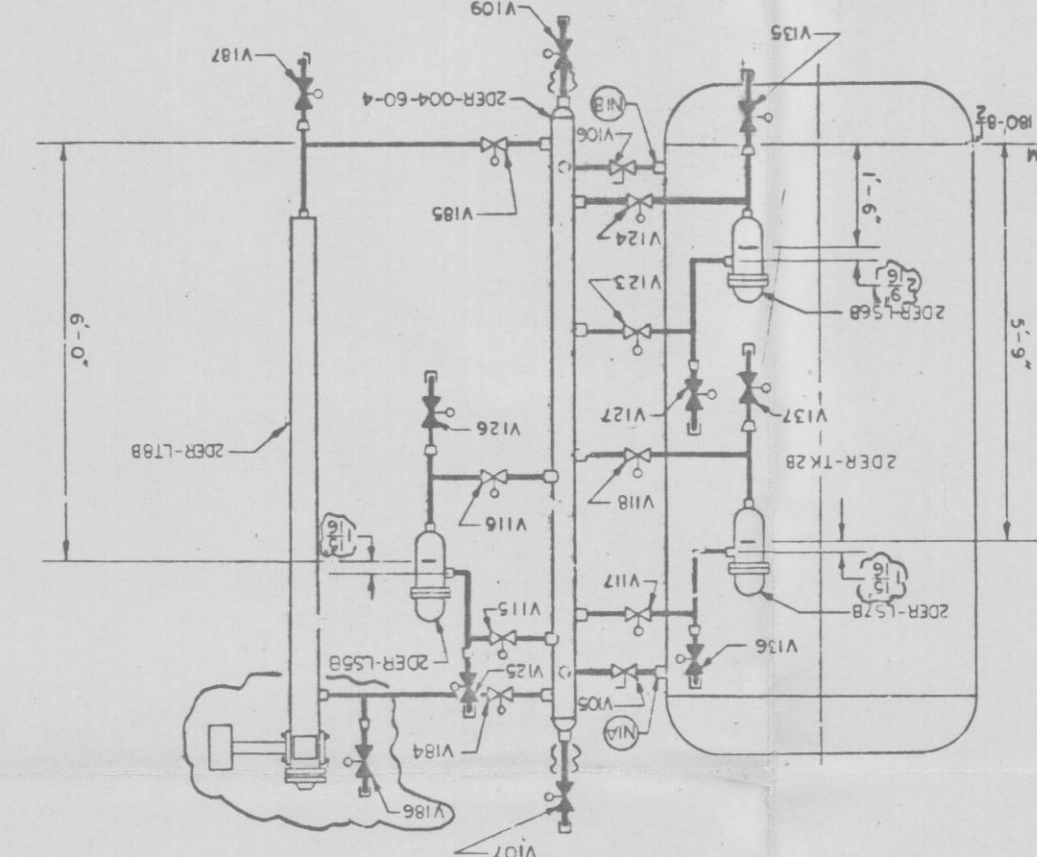
PARTIAL PLAN REACTOR BUILDING  
ELEVATION 175'-0"



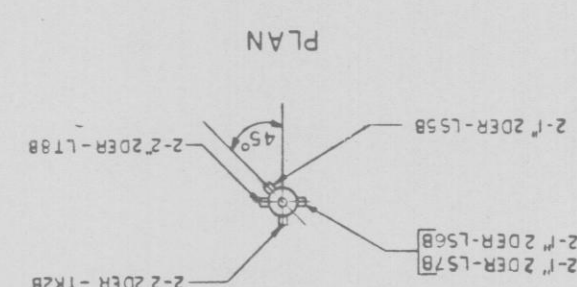
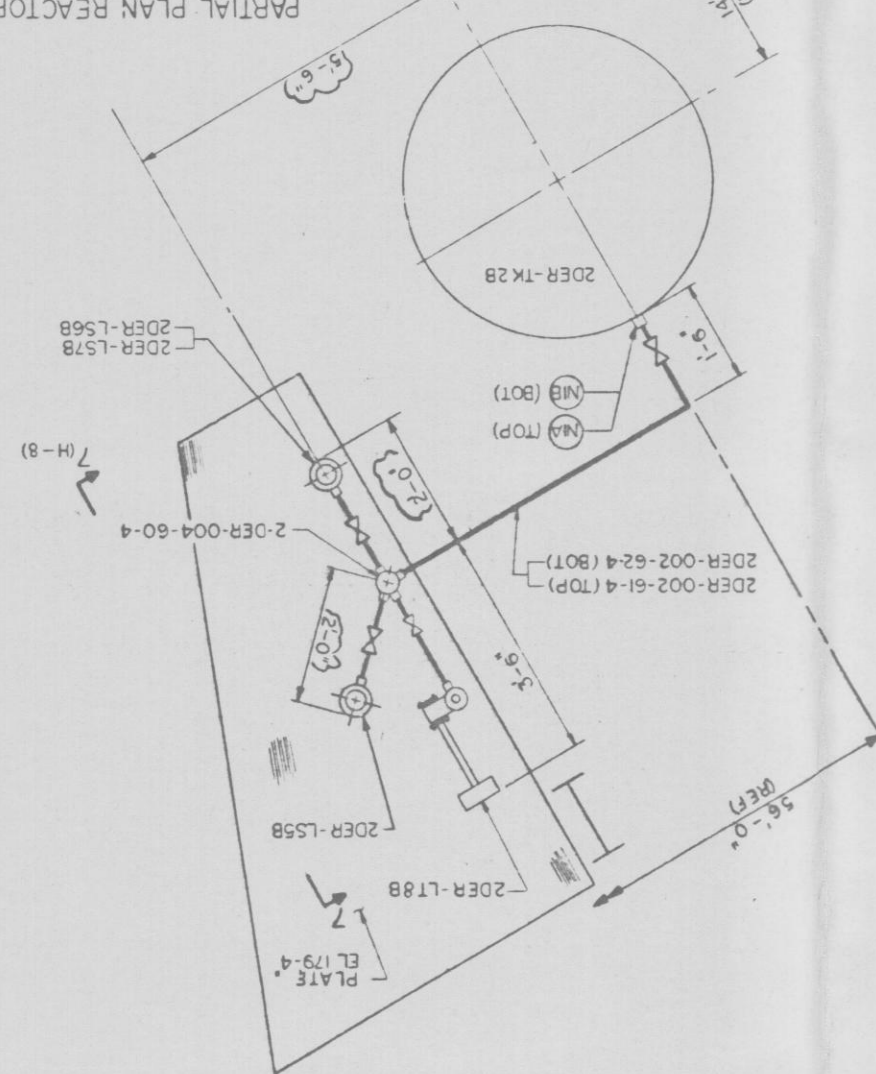
6-6 (10-3) (AS SHOWN) PIPING CLASS 153  
ALL VALVE NUMBERS TO BE PREFIXED WITH '2DER'



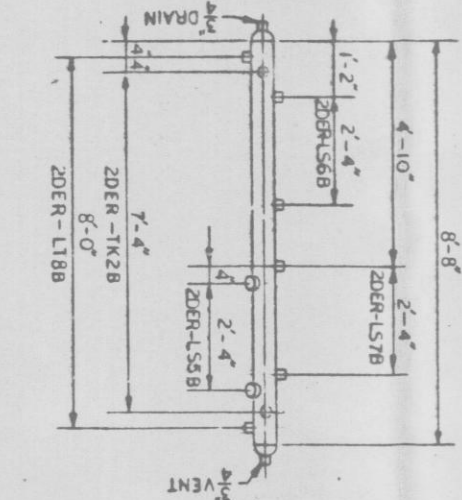
7-7 (10-3) (AS SHOWN) PIPING CLASS 153  
ALL VALVE NUMBERS TO BE PREFIXED WITH '2DER'



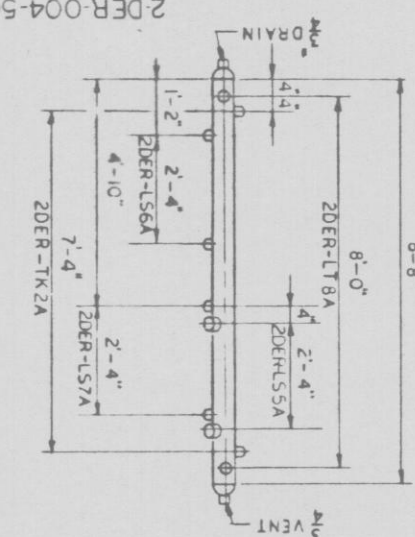
PARTIAL PLAN REACTOR BUILDING  
ELEVATION 175'-0"



2DER-004-60-4  
SCALE: NONE



2DER-004-50-4  
SCALE: NONE



PROC  
APERTURE  
CARD

NUCLEAR SAFETY RELATED  
QA CATH  
INSTRUMENT PIPING  
LEVEL CONTROLS & SWITCHES SH 3

CH  
DRAWING  
NINE MILE POINT NUCLEAR STATION - UNIT 2  
NIAGARA MOHAWK POWER CORPORATION  
STONE & WEBSTER ENGINEERING CORPORATION  
DESIGNED BY M. LLOYD  
CHECKED BY J. SYLVESTER  
12177-EK-406C-2  
BIC