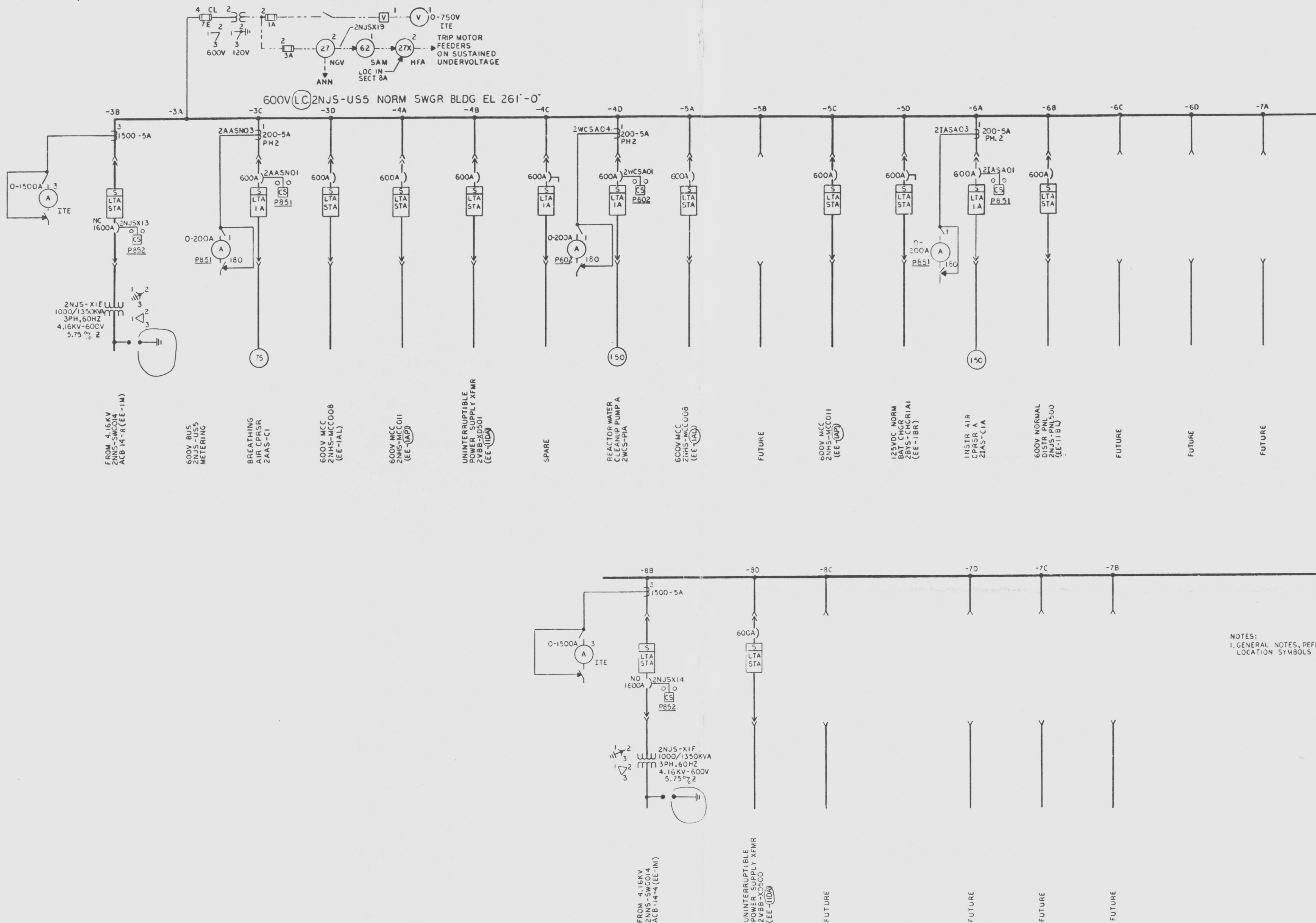


12177-EE-IX-7



NOTES:  
1. GENERAL NOTES, REFERENCES, ADDITIONAL SYMBOLS & LOCATION SYMBOLS EE-IT.

TI  
APERTURE  
CARD

QA CAT II



APPROVED *Angel Balle*  
LICENSED PROFESSIONAL ENGINEER, NO. 052544  
STATE OF NEW YORK  
ALTERATION EXCEPT BY A LICENSED PROFESSIONAL ENGINEER IS ILLEGAL

600V ONE LINE DIAGRAM  
NORMAL BUS 2NJS-US5  
NORM SWGR BLDG EL 261'-0"  
NINE MILE POINT NUCLEAR STATION - UNIT 2  
NIAGARA MOHAWK POWER CORPORATION  
STONE & WEBSTER ENGINEERING CORPORATION  
BOSTON, MASS.

DRAWING NUMBER 12177-EE-IX-7

Des. Chd. by  
Drawn by K. PEAKE  
CHKD by C. HENDERSON

ISSUED FOR DESIGN REVIEW									
ISSUE	NO.	DATE	DESCRIPTION	CHD	CONR	APPR	DATE	ISSUE	NO.
1	1	10/1/77	SEE RECORD OF DRAWING CHANGES BCE-IX-6					1	1
2	2	10/1/77	REV LOC OF PERDS TO SECT 2B & 2C CHNG SECT 2A & 2D TO FUTURE ADDED CITY LOC & SKT FOR 27X					2	2
3	3	10/1/77	SEE RECORD OF DRAWING CHANGE BCE-IX-4					3	3
4	4	10/1/77	SEE RECORD OF DRAWING CHANGE 12177-BCE-IX-3					4	4
5	5	10/1/77	SEE RECORD OF DRAWING CHANGES 12177-BCE-IX-2					5	5
6	6	10/1/77	ORIGINAL ISSUE FOR ENGINEERING ONLY					6	6