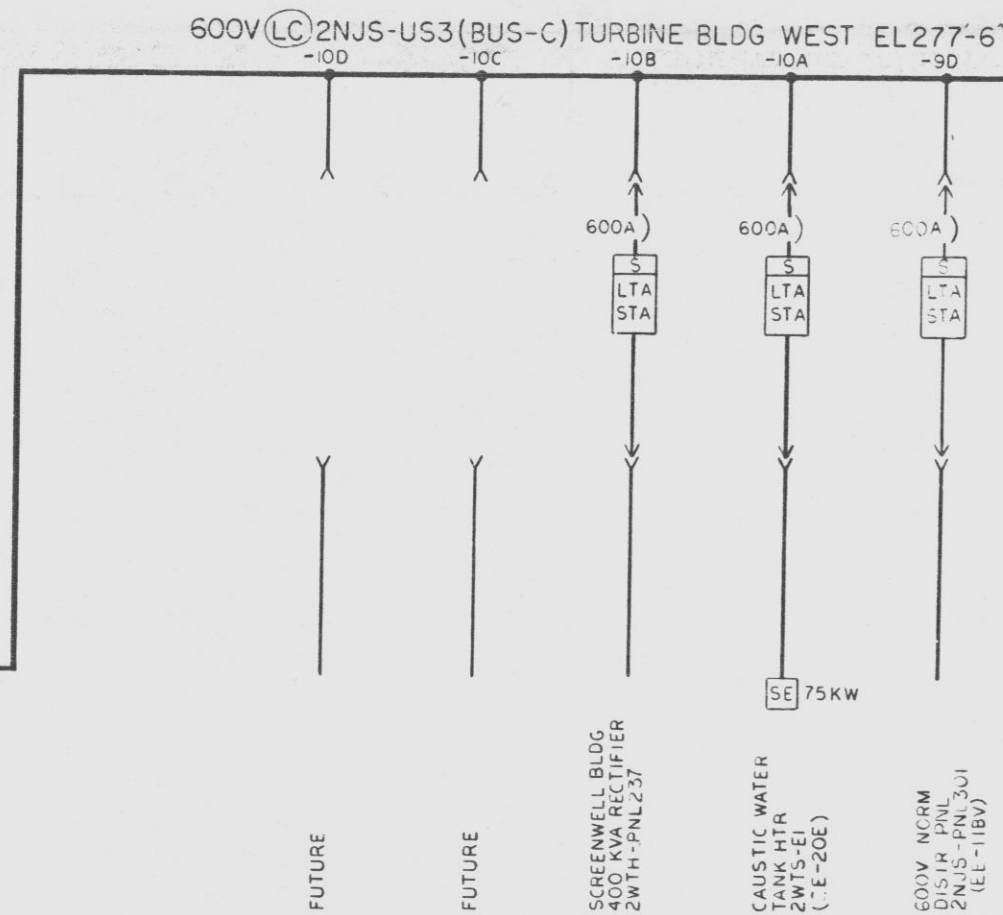
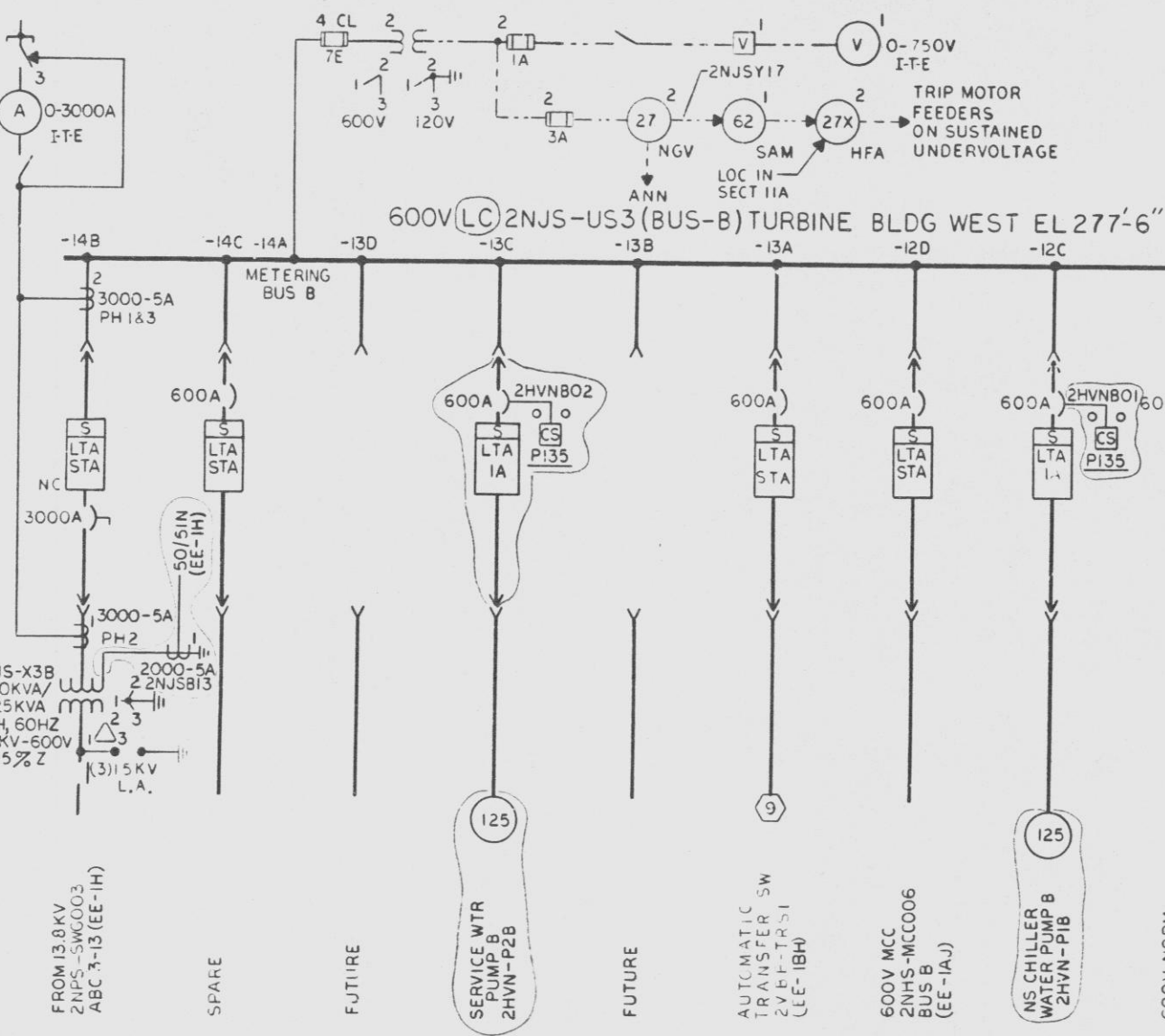
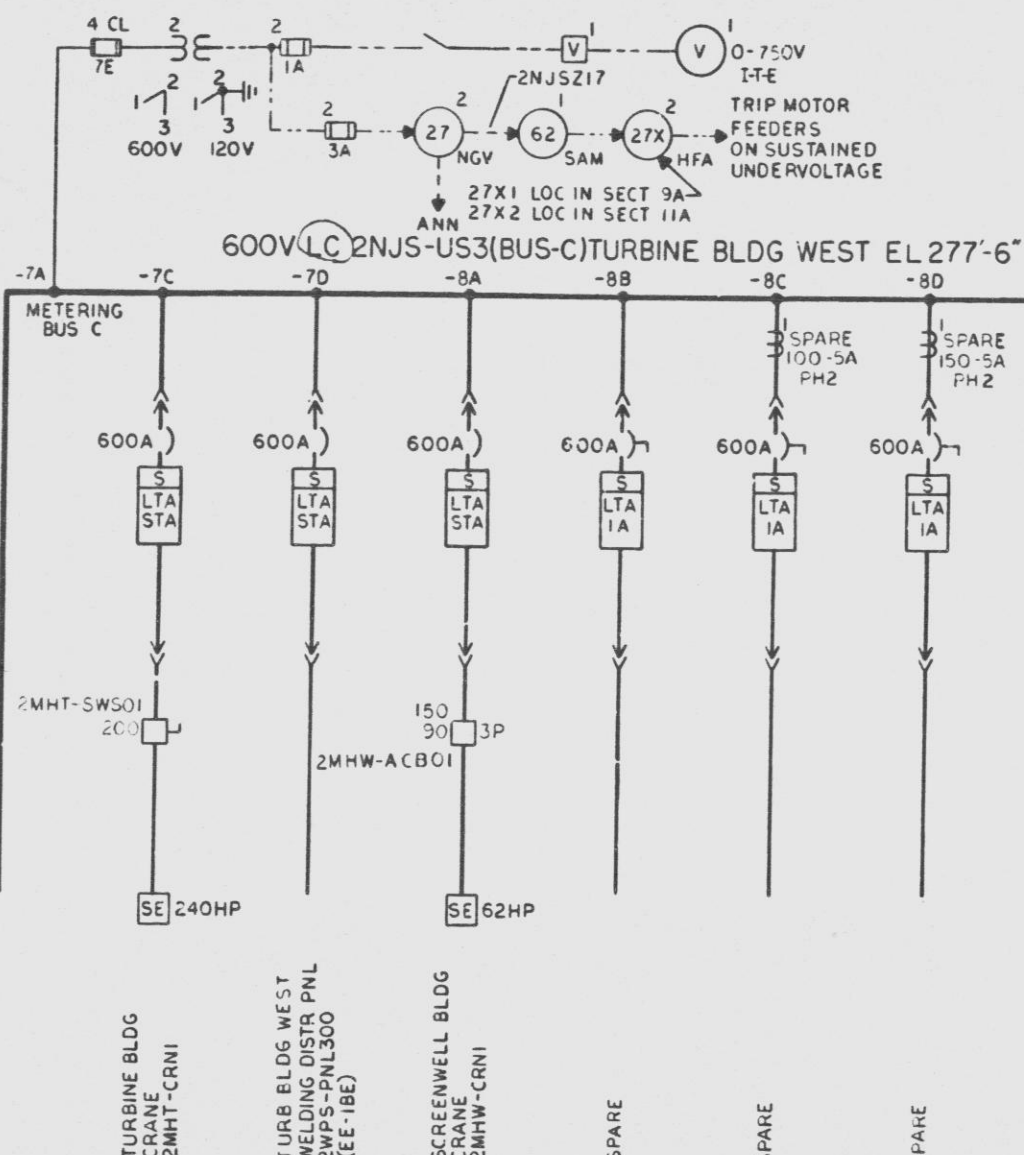
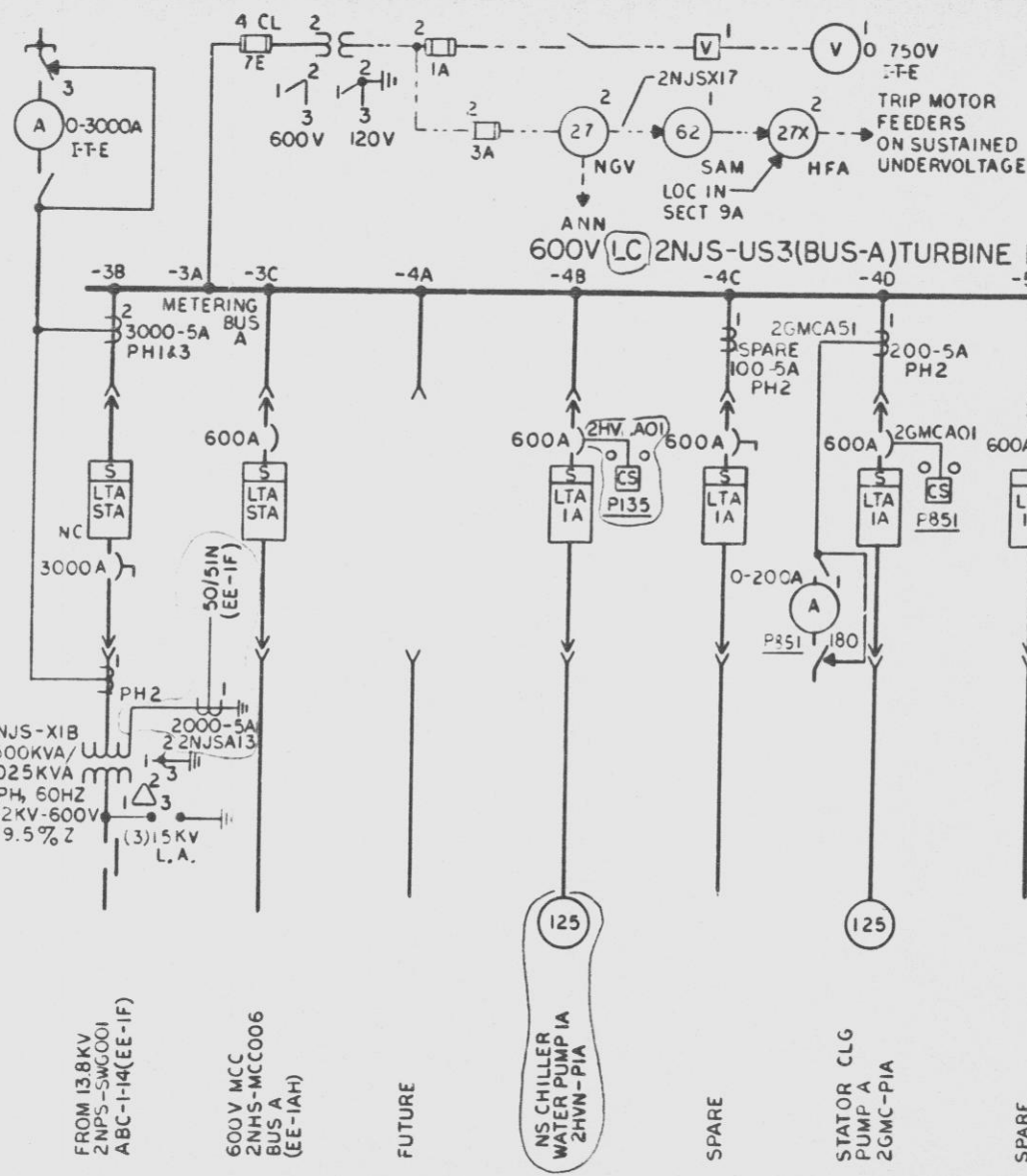


12177-EE-IV-9



NOTE:
1. GENERAL NOTES, REFERENCES, ADDITIONAL SYMBOLS &
LOCATION SYMBOLS - SEE-IT.

TI
APERTURE
CARD

QA CAT II



APPROVED: Joseph A. Gagliardi
LICENSED PROFESSIONAL ENGINEER, NO. 12177-EE-IV-9
STATE OF NEW YORK
ALTERATION EXCEPT BY A LICENSED PROFESSIONAL ENGINEER IS ILLEGAL

600V ONE LINE DIAGRAM
NORMAL BUS 2NJS-US3
TURBINE BLDG WEST EL 277'-6"

NINE MILE POINT NUCLEAR STATION - UNIT 2
NIAGARA MOHAWK POWER CORPORATION
STONE & WEBSTER ENGINEERING CORPORATION
BOSTON, MASS.

CH 12177-EE-IV-9
DRAWING NUMBER
DESIGNED BY F. ALCAVAGE
CHECKED BY M. ZACCARIA
DATE 3/31/78

THE INFORMATION ON THIS DRAWING MAY NOT BE COPIED
OR USED FOR OTHER THAN THE CONSTRUCTION,
MAINTENANCE OR REPAIR OF THE PLANT FACILITY
DESCRIBED IN THE TITLE BLOCK.

ISSUED FOR DESIGN REVIEW
ADDED XFMR IMPEDANCE & TYPE
OF AM. CHANGED SECT 5A & 13A TO SP.

REDESIGNED FOR 2NJS-US3
CHANGED TYPE OF RELAY 27X & 62

SUPERSEDED BY DWG EE-IV-3
PJC RDC

FOR ENGINEERING ONLY
ORIGINAL ISSUE
FOR ENGINEERING ONLY

CH 12177-EE-IV-9
DRAWING NUMBER
DESIGNED BY F. ALCAVAGE
CHECKED BY M. ZACCARIA
DATE 3/31/78

THE INFORMATION ON THIS DRAWING MAY NOT BE COPIED
OR USED FOR OTHER THAN THE CONSTRUCTION,
MAINTENANCE OR REPAIR OF THE PLANT FACILITY
DESCRIBED IN THE TITLE BLOCK.

ISSUED FOR DESIGN REVIEW
ADDED XFMR IMPEDANCE & TYPE
OF AM. CHANGED SECT 5A & 13A TO SP.

REDESIGNED FOR 2NJS-US3
CHANGED TYPE OF RELAY 27X & 62

SUPERSEDED BY DWG EE-IV-3
PJC RDC

FOR ENGINEERING ONLY
ORIGINAL ISSUE
FOR ENGINEERING ONLY

CH 12177-EE-IV-9
DRAWING NUMBER
DESIGNED BY F. ALCAVAGE
CHECKED BY M. ZACCARIA
DATE 3/31/78