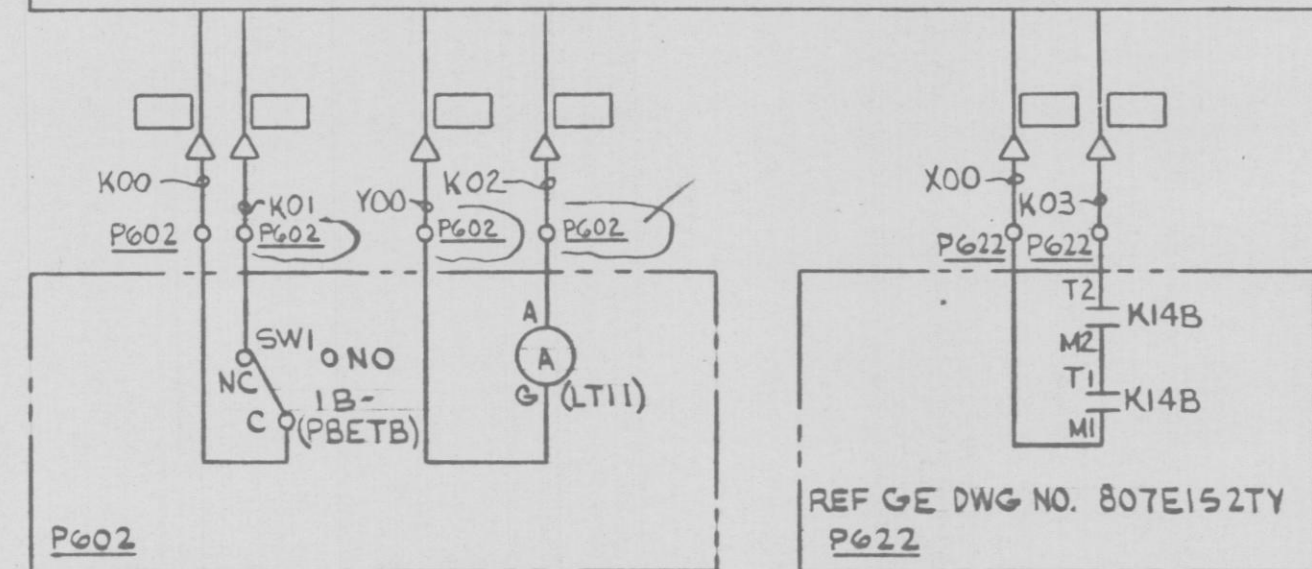
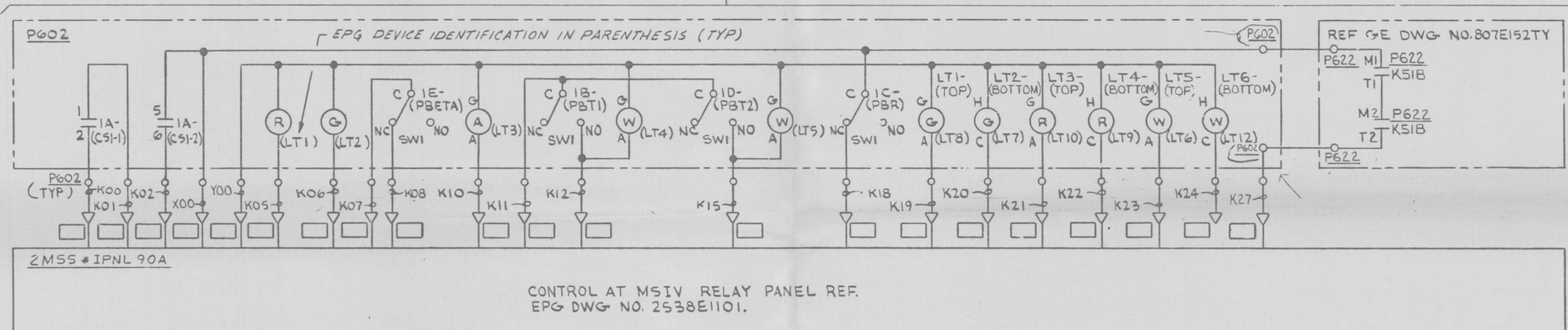


MAIN STEAM ISOL VALVE (INBD) 2MSS*HYV6A (B22-F022A) CKT NO. 2MSSA12 (YELLOW) RPS-UPS "A", NOTES 2 & 3



CKT NO. 2MSSA13 (YELLOW AND WHITE) RPS-UPS "B", NOTES 2 & 3

PRC
APERTURE
CARD

CS	DETAIL	ESK	SPARES	USED ON
1A-2MSSA12	UI	3C	3-4, 7-8	
1B-2MSSA12	MR	3E	SW2	
1C-2MSSA12	MN	3E	SW2	
1D-2MSSA12	MR	3E	SW2	
1E-2MSSA12	MN	3E	SW2	
1B-2MSSA13	MN	3E	SW2	

NOTES:

- FOR COMPLETE CONT OF MAIN STM ISOL VALVE REFER TO EPG DWG 2538E1101.
- CIRCUITS 2MSSA12 AND 2MSSA13 ARE ASSOCIATED WITH NON-ESSENTIAL REDUNDANT POWER SUPPLIES (RPS-UPS "A" & "B" RESPECTIVELY) AND CABLES ASSOCIATED WITH EACH CIRCUIT MUST BE ROUTED IN SEPARATE GROUNDED CONDUITS.
- CABLES OF SAME COLOR AND POWERED FROM SAME SOURCE MAY BE ROUTED IN SAME CONDUIT.

NUCLEAR SAFETY RELATED
QA CAT I

AC ELEM DIAG-MISC AC CKTS
MAIN STM ISOL VALVE 2MSS*HYV6A CONT
NINE MILE POINT NUCLEAR STATION-UNIT 2
NIAGARA MOHAWK POWER CORPORATION



12177-ESK-7MSS13

DESIGN CONTROL ISSUE 3	DESIGN CONTROL ISSUE
10/6/82	10/6/82
ECN-013	2
3	1
6	5
4	3
5	4
6	5

D