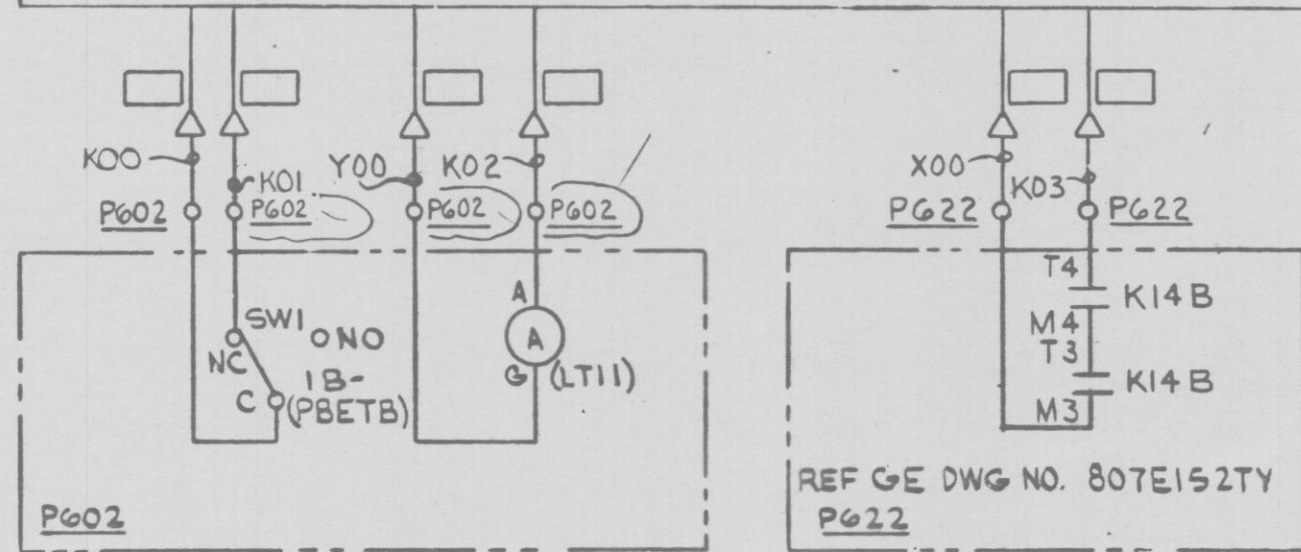
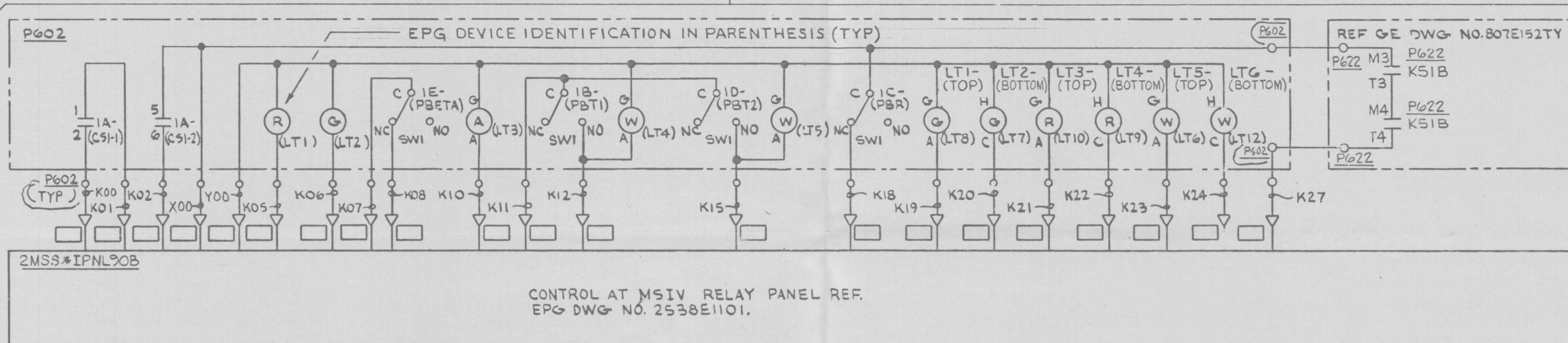


MAIN STEAM ISOL VALVE (INBD) 2MSS*HYV6B (B22-F022B) CKT NO 2MSSB12 (YELLOW) RPS-UPS "A" NOTES 2 & 3



CKT NO 2MSSB13 (YELLOW AND WHITE) RPS-UPS "B" NOTES 2 & 3

PRC
APERTURE
CARD

CS	DETAIL	ESK	SPARES	USED ON
1A-2MSSB12	UI	3C	3-4, 7-8	
1B-2MSSB12	MR	3E	SW2	
1C-2MSSB12	MN	3E	SW2	
1D-2MSSB12	MR	3E	SW2	
1E-2MSSB12	MN	3E	SW2	
1B-2MSSB13	MN	3E	SW2	

NOTES:

- FOR COMPLETE CONT OF MAIN STM ISOL VALVE REFER TO EPG DWG 2538E1101.
- CIRCUITS 2MSSB12 AND 2MSSB13 ARE ASSOCIATED WITH NON ESSENTIAL REDUNDANT POWER SUPPLIES (RPS-UPS "A" & "B" RESPECTIVELY) AND CABLES ASSOCIATED WITH EACH CIRCUIT MUST BE ROUTED IN SEPARATE GROUNDED CONDUITS.
- CABLES OF SAME COLOR AND POWERED FROM SAME SOURCE MAY BE ROUTED IN SAME CONDUIT.

NUCLEAR SAFETY RELATED
QA CAT I

AC ELEM DIAG-MISC AC CKTS
MAIN STM ISOL VALVE 2MSS*HYV6B CONT
NINE MILE POINT NUCLEAR STATION-UNIT 2
NIAGARA MOHAWK POWER CORPORATION

STONE & WEBSTER ENGINEERING CORPORATION

12177-ESK-7MSSI4

DESIGN CONTROL ISSUE	DESIGN CONTROL ISSUE
10/6/82 ECN-013	10/6/82 ECN-013
3	2
6	5
4	3
3	2
2	1
1	0

RK APM

D