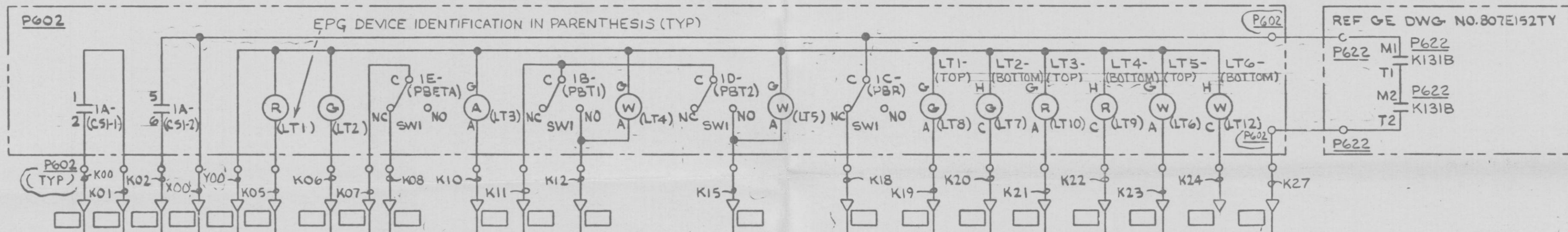
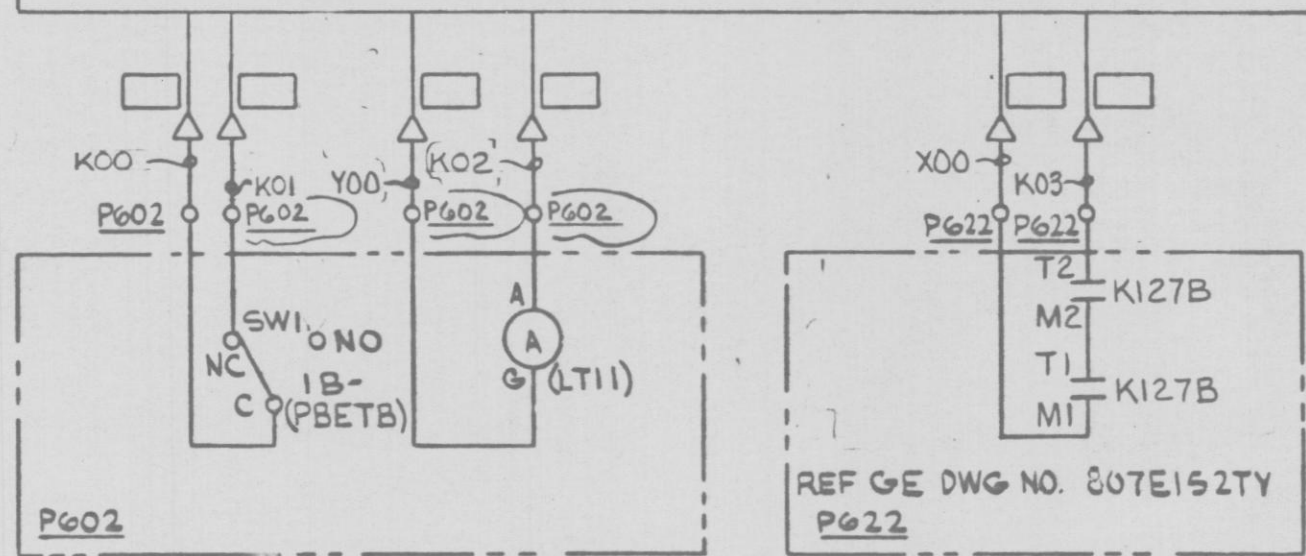


MAIN STEAM ISOL VALVE (INBD) 2MSS*HYV6C (B22-F022C) CKT NO. 2MSSC12 (YELLOW) RPS-UPS "A" NOTES 2 & 3



2MSS*IPNL90C
CONTROL AT MSIV RELAY PANEL REF. EPG DWG NO. 2538E1101.



CKT NO. 2MSSC13 (YELLOW & WHITE) RPS-UPS "B" NOTES 2 & 3

PRC
APERTURE
CARD

CS	DETAIL	ESK	SPARES	USED ON
1A-2MSSC12	UI	3C	3-4, 7-8	
1B-2MSSC12	MR	3E	SW2	
1C-2MSSC12	MN	3E	SW2	
1D-2MSSC12	MR	3E	SW2	
1E-2MSSC12	MN	3E	SW2	
1B-2MSSC13	MN	3E	SW2	

NOTES:

- FOR COMPLETE CONT. OF MAIN STM ISOL VALVE REFER TO EPG DWG. 2538E1101.
 - CIRCUITS 2MSSC12 AND 2MSSC13 ARE ASSOCIATED WITH NON ESSENTIAL REDUNDANT POWER SUPPLIES (RPS-UPS "A" & "B" RESPECTIVELY) AND CABLES ASSOCIATED WITH EACH CIRCUIT MUST BE ROUTED IN SEPARATE GROUNDED CONDUITS.
 - CABLES OF SAME COLOR AND POWERED FROM SAME SOURCE MAY BE ROUTED IN SAME CONDUIT.
- NUCLEAR SAFETY RELATED
QA CAT I

AC ELEM DIAG-MISC AC CKTS
MAIN STM ISOL VALVE 2MSS*HYV6C CONT
NINE MILE POINT NUCLEAR STATION-UNIT 2
NIAGARA MOHAWK POWER CORPORATION
Stone & Webster Engineering Corporation

12177-ESK-7MSSI5

DESIGN CONTROL ISSUE 3	DESIGN CONTROL ISSUE
10/6/82	1/12/83
ECN-013	2
3	1
6	5
4	3
3	2
2	1
1	0

JST

APM

APM