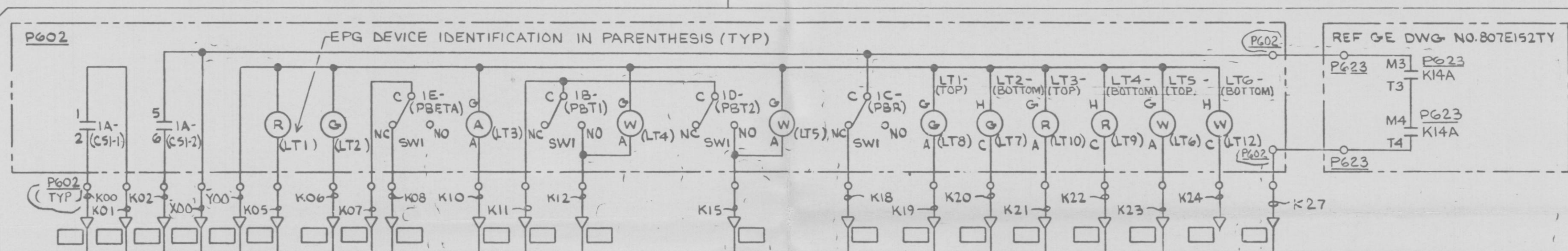
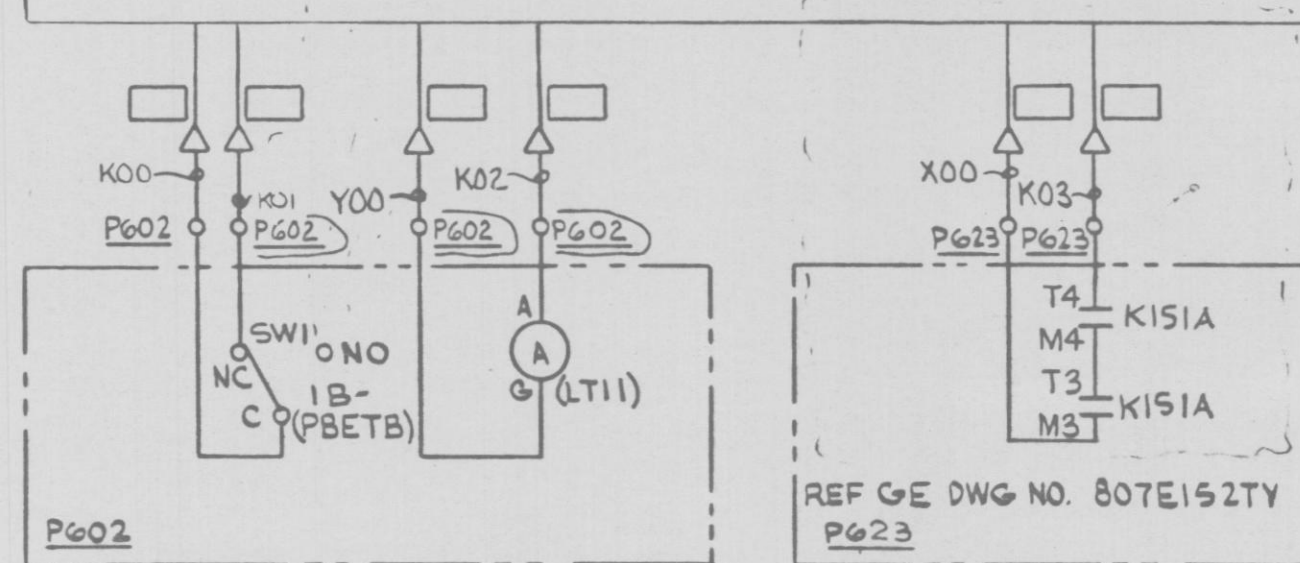


MAIN STEAM ISOL VALVE (OUTBD) 2MSS*HYV7B (B22-FO28B) CKT NO. 2MSSB18 (GREEN) RPS-UPS "B", NOTES 2 & 3



2MSS*IPNL91B

CONTROL AT MSIV RELAY PANEL REF.
EPG DWG NO. 2540-E-1101.



CKT NO. 2MSSB19 (GREEN & WHITE) RPS-UPS "A", NOTES 2 & 3

PRC
APERTURE
CARD

CS	DETAIL	ESK	SPARES	USED ON
1A-2MSSB18	(UL)	3C	3-4, 7-8	
1B-2MSSB18	MR	3E	SW2	
1C-2MSSB18	MN	3E	SW2	
1D-2MSSB18	MR	3E	SW2	
1E-2MSSB18	MN	3E	SW2	
1B-2MSSB19	MN	3E	SW2	

NOTES:

- FOR COMPLETE CONT OF MAIN STM ISOL VALVE REFER TO EPG DWG 2538E1101.
- CIRCUITS 2MSSB18 AND 2MSSB19 ARE ASSOCIATED WITH NON-ESSENTIAL REDUNDANT POWER SUPPLIES (RPS-UPS "A" & "B" RESPECTIVELY) AND CABLES ASSOCIATED WITH EACH CIRCUIT MUST BE ROUTED IN SEPARATE GROUNDED CONDUITS.
- CABLES OF SAME COLOR AND POWERED FROM SAME SOURCE MAY BE ROUTED IN SAME CONDUIT.

NUCLEAR SAFETY RELATED
QA CAT I

AC ELEM DIAG-MISC AC CKTS
MAIN STM ISOL VALVE 2MSS*HYV7B CONT
NINE MILE POINT NUCLEAR STATION-UNIT 2
NIAGARA MOHAWK POWER CORPORATION

STONE & WEBSTER ENGINEERING CORPORATION

12177-ESK-7MSS18

DESIGN CONTROL ISSUE 3	DESIGN CONTROL ISSUE
10/6/82 ECN-013	1/24/83 2
6	5
4	3

APM